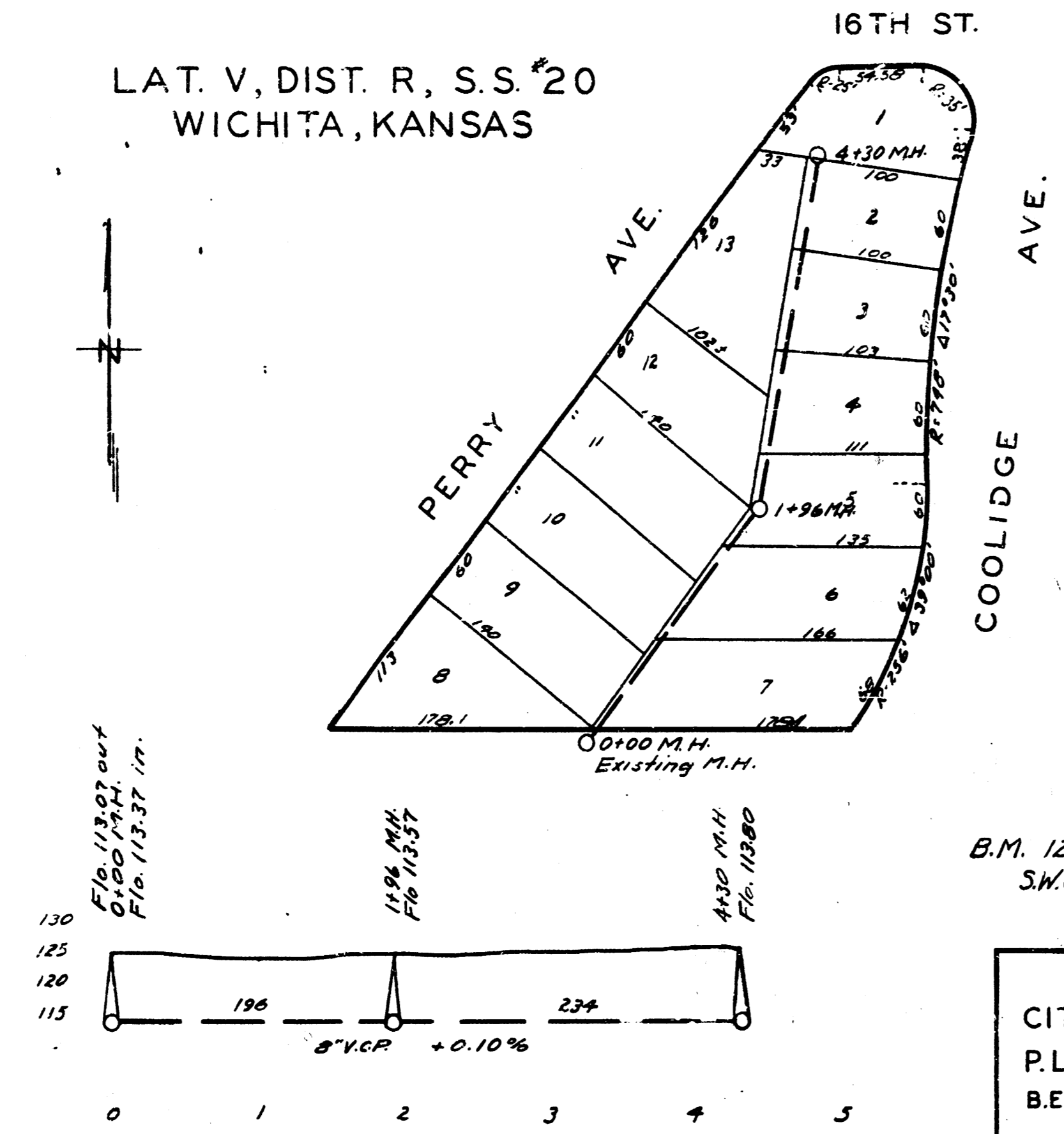


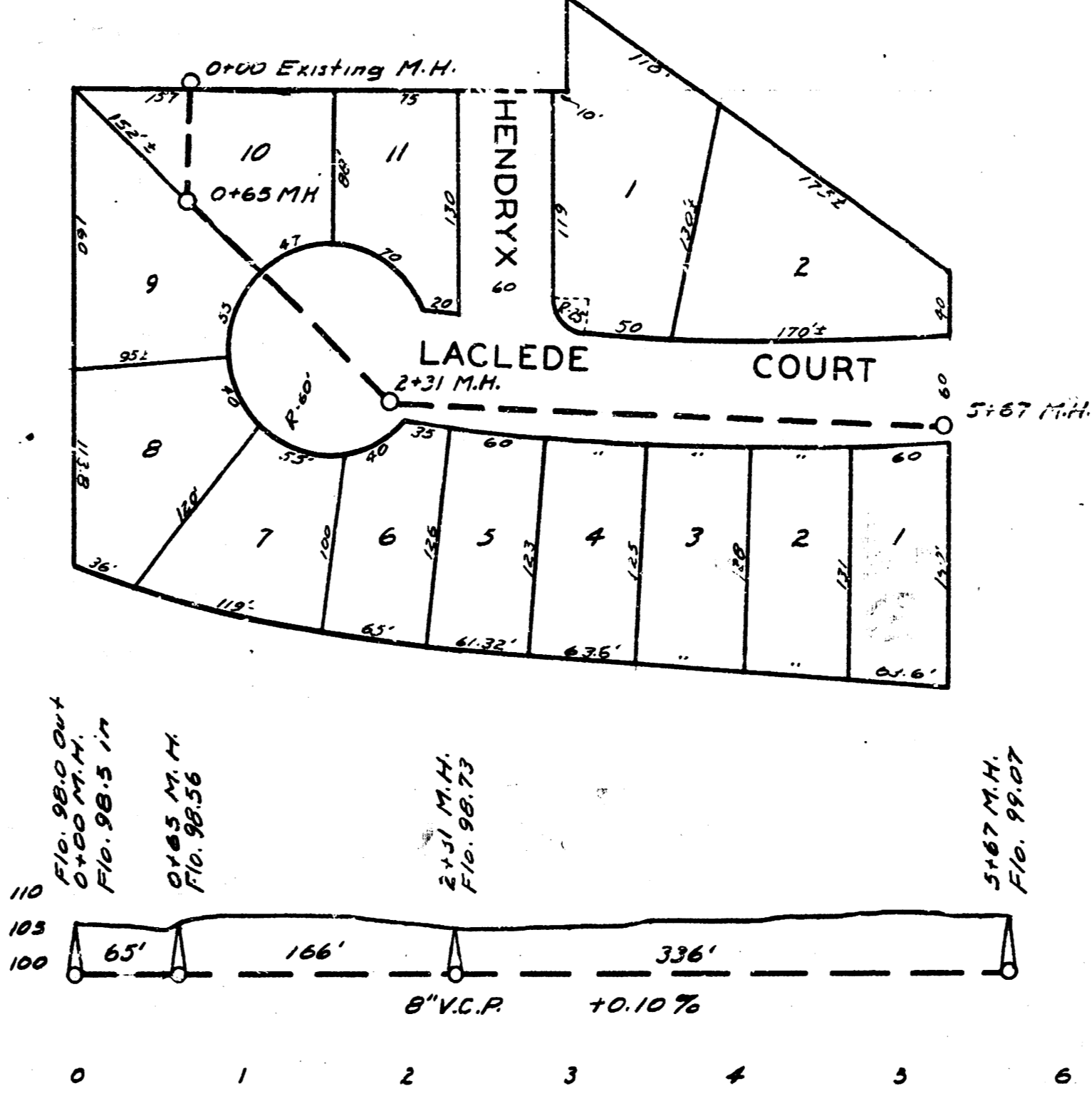
LAT. V, DIST. R, S.S. *20
WICHITA, KANSAS



B.M. 124.00 N.W. Cor. Wt. So.
S.W. Cor. Coolidge & Parker

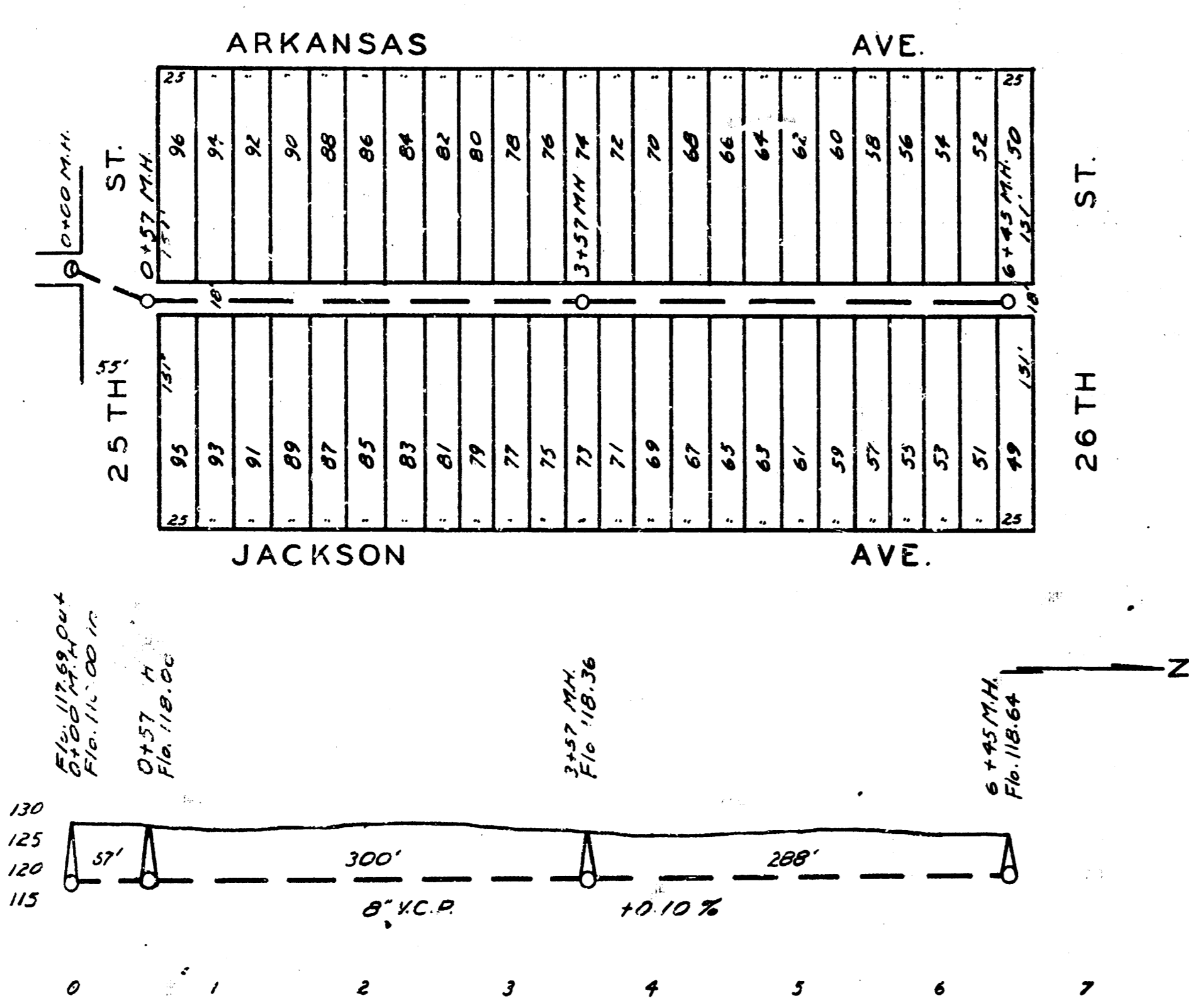
ENGINEERING DEPARTMENT
CITY OF WICHITA KANSAS
P.L. BROCKWAY CITY ENGINEER
B.E. SMITH ENGINEER OF DESIGN
SEPT. 1941 DRAWN BY V.K.R.

LAT. A, DIST. F, S.S. *21
WICHITA, KANSAS



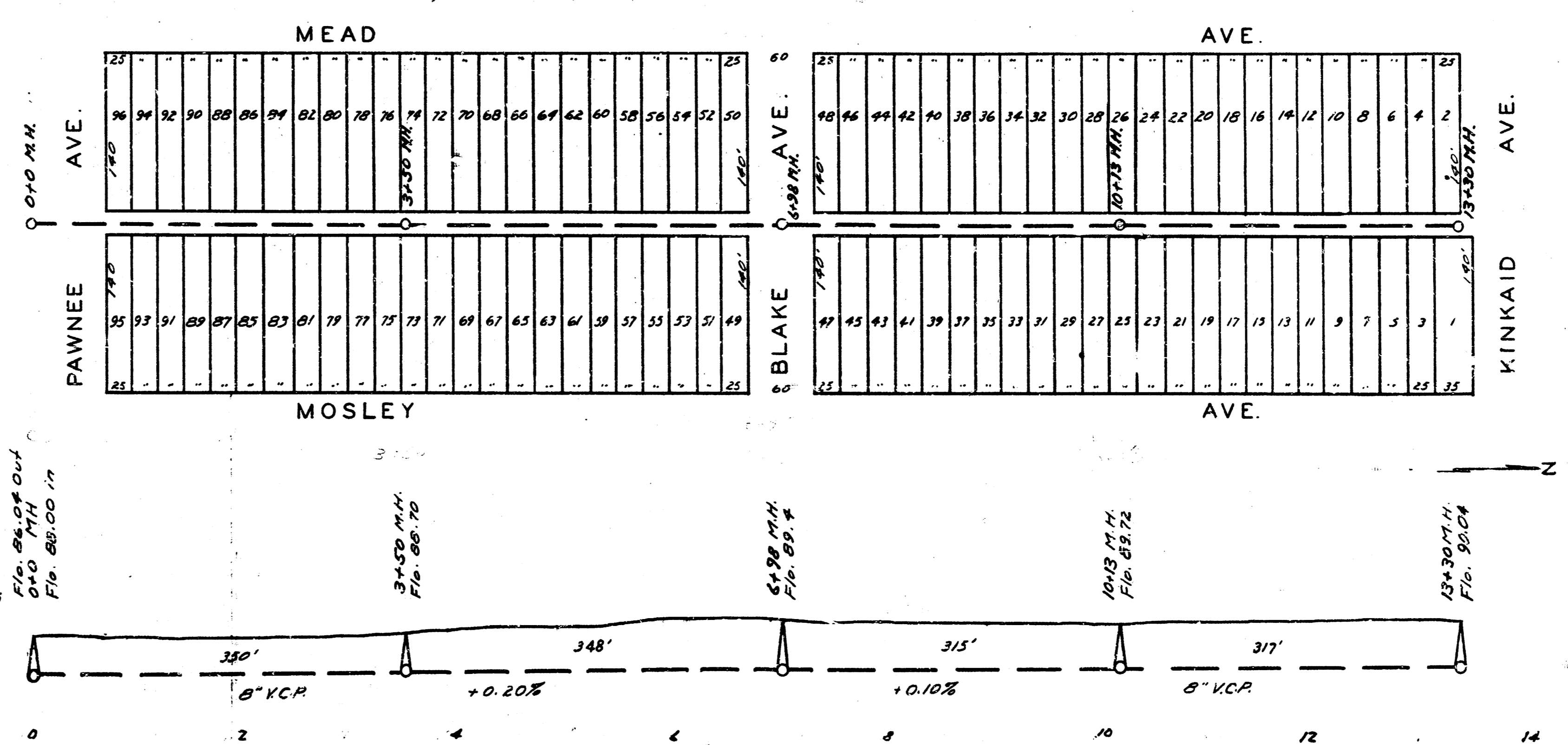
B.M. 108.21 N.E. Cor. E. Brick
Pillar front of Ho. 503
(Front yard pillar)

LAT. H, DIST. T, S.S. *20 WICHITA, KANSAS



B.M. 126.71 Iron in thim. 25th & Ark.
B.M. 126.89 Sp-nail in R.P. 15' No. of M.H.

LAT. M, DIST. B, S.S. 20 WICHITA, KANSAS



B.M. 100.42 Std. N.E. Cor. Levy & Wash.
B.M. Stepbench in R.P. N.S. Clark 102.94
B.M. " " " N.S. Kinkaid @ Alt. 102.55

B.M. 101.43 Sp-nail in T.P. WS Alley @ Blake
B.M. 97.97 " " " R.P. on N.S. Pawnee @
alley bet. Mosley & Mead.