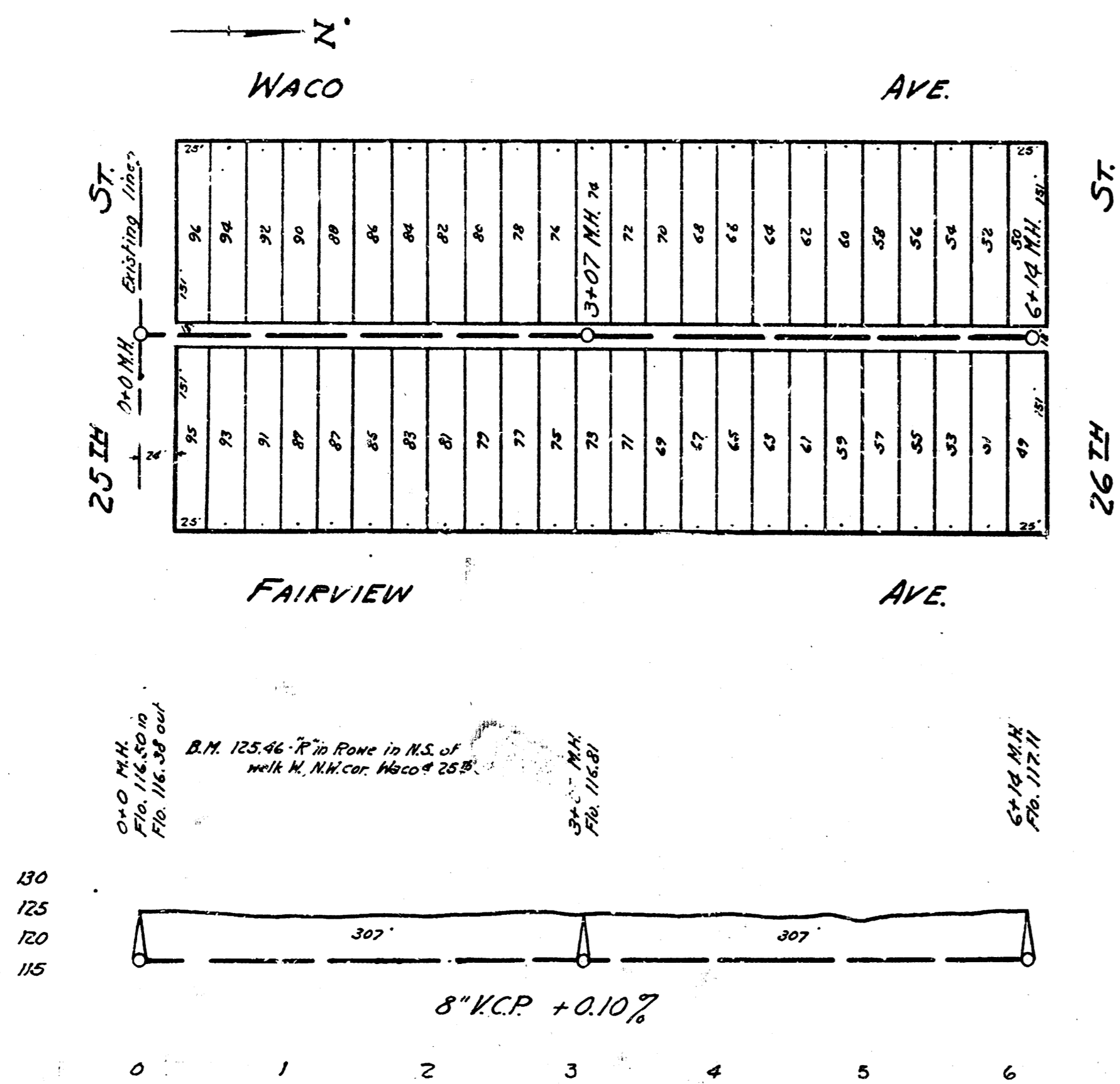
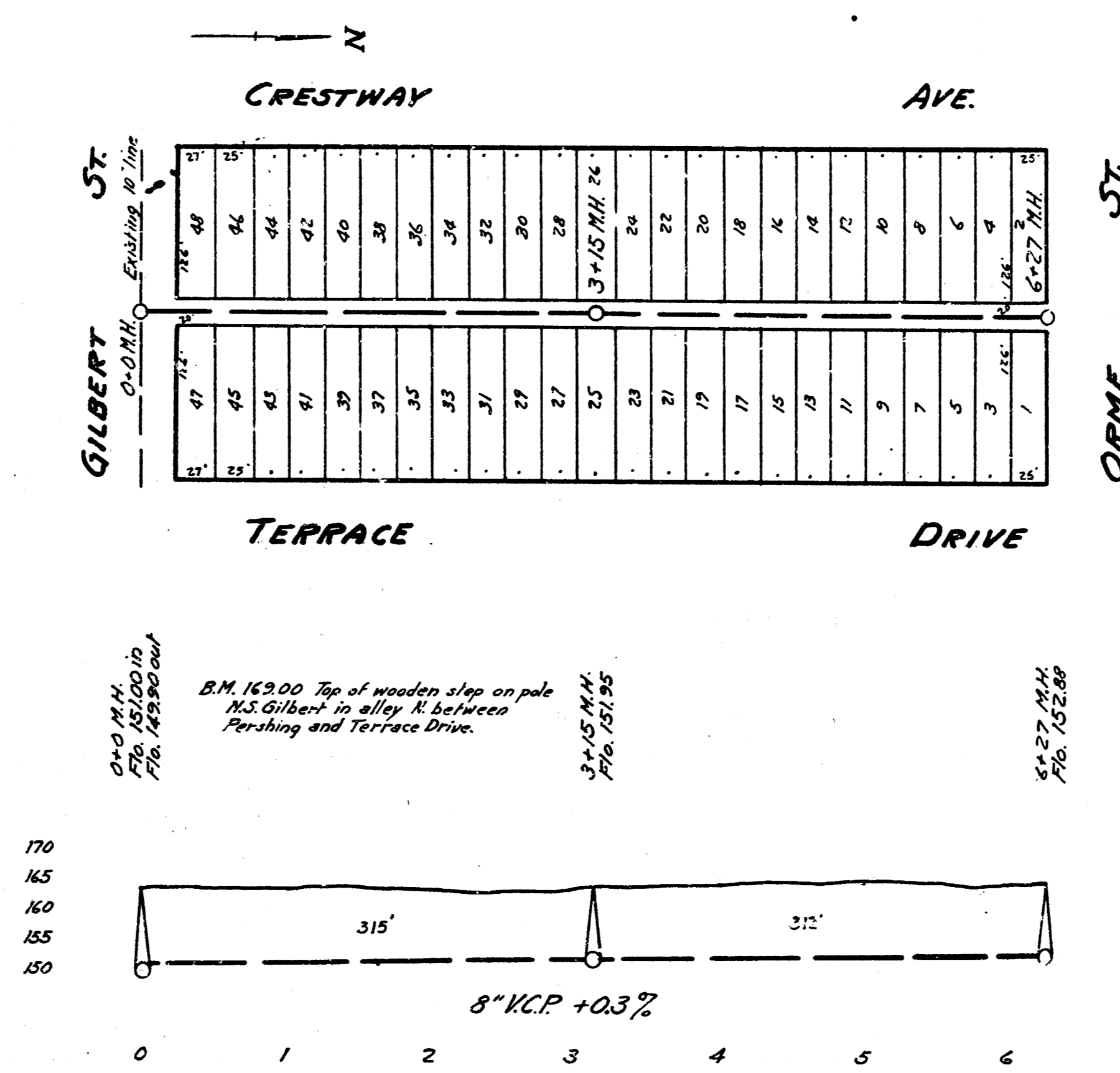


LAT. J, DIST. T, S.S. #20

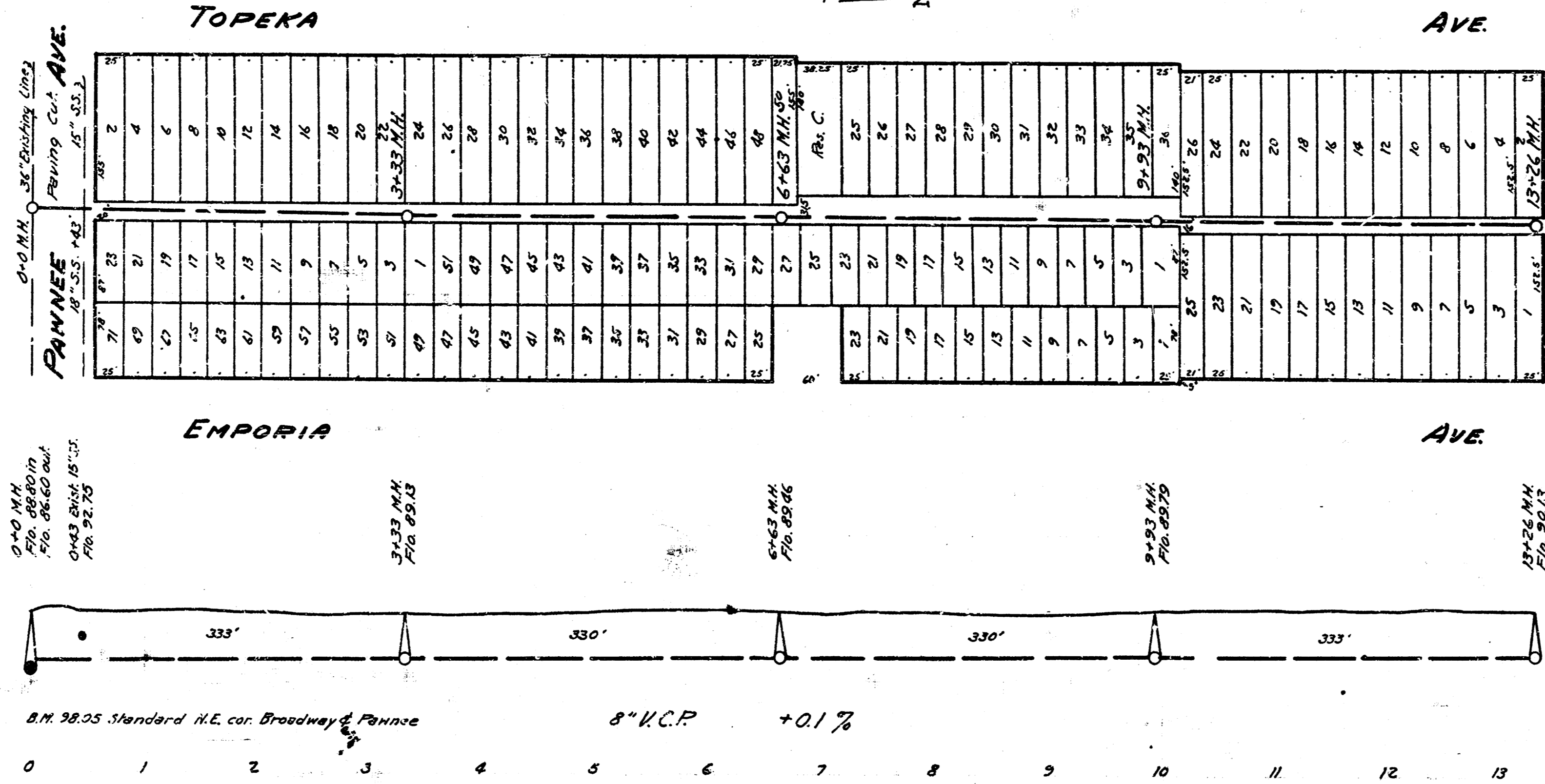


LAT. 7, DRY CREEK SUB., S.S. #12



TOPEKA

AVE.



LAT. N, DIST. B, S.S. #20

ENGINEERING DEPARTMENT
CITY OF WICHITA, KANSAS
P.L. BROCKWAY CITY ENGINEER
SCALE 1"=80' MARCH 1942