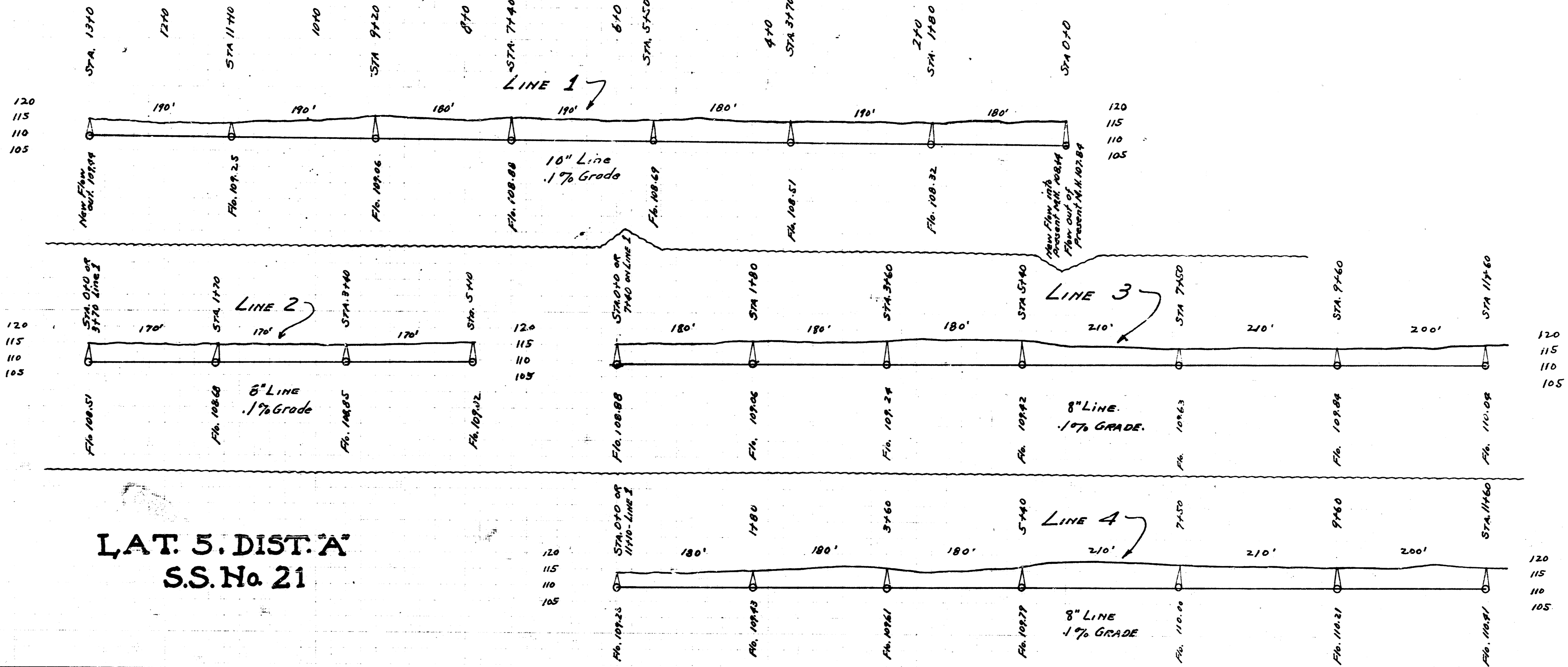
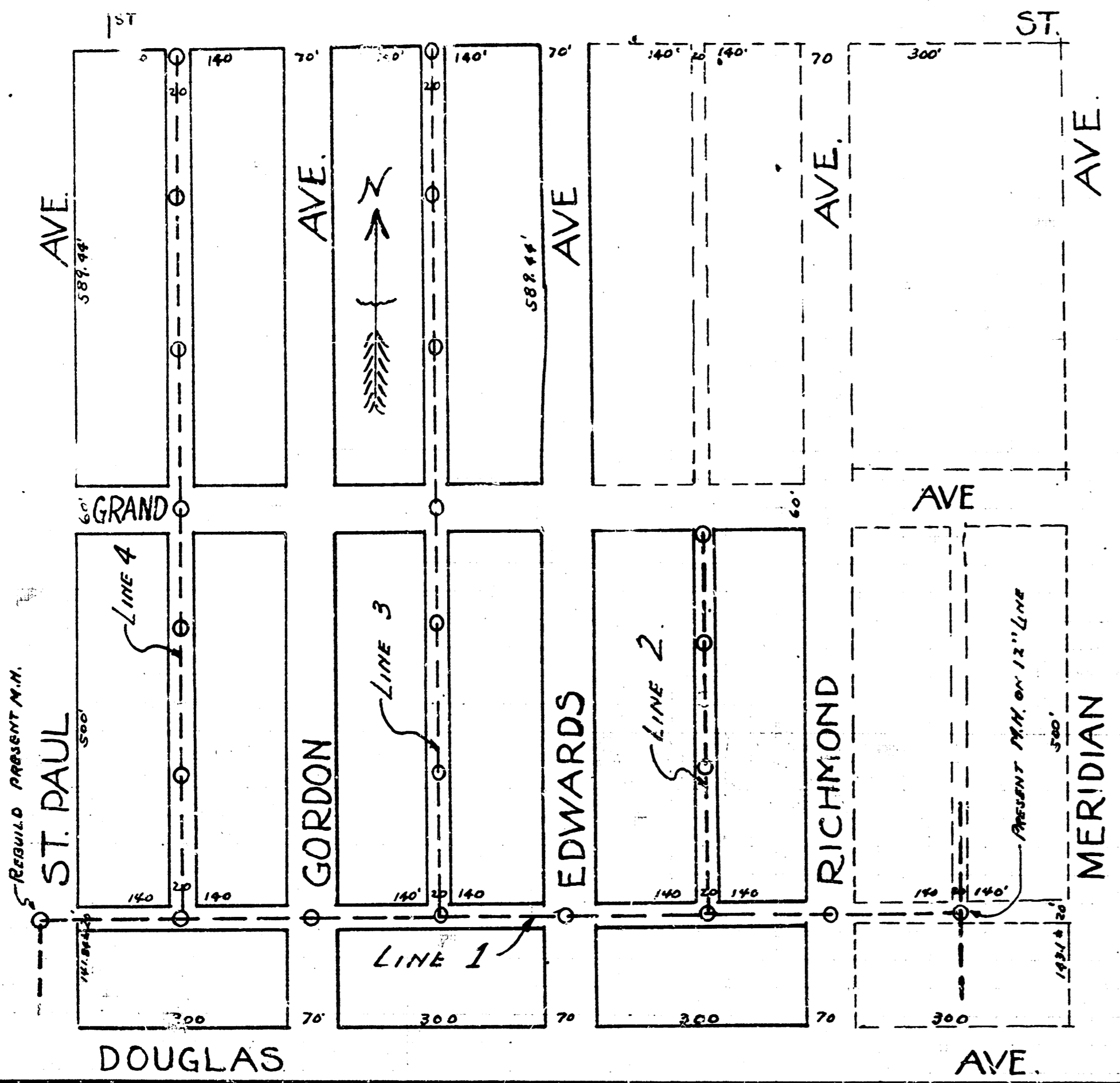
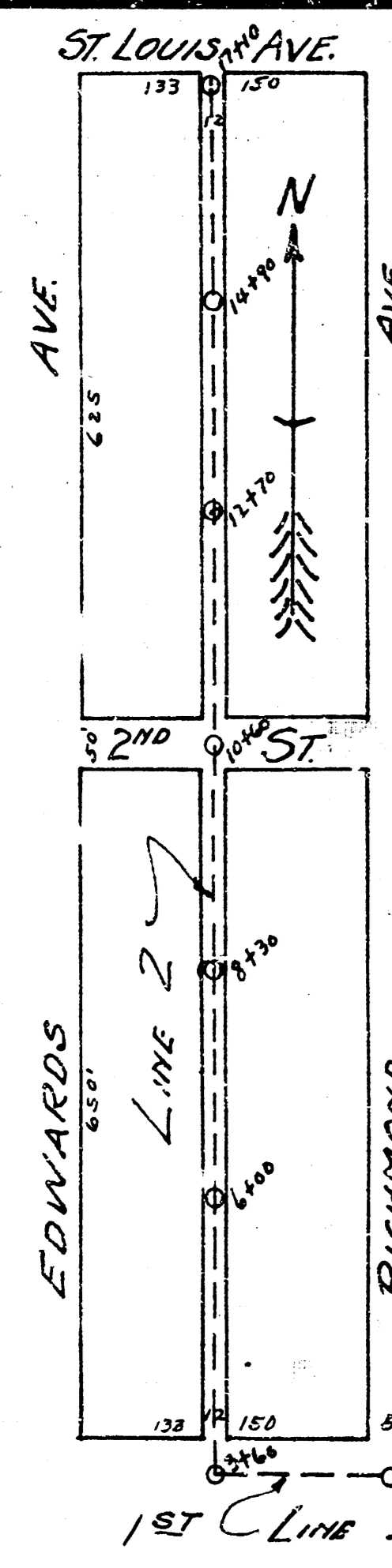


B.M. 114.86 "K" in Kensler in ctr. wk. N.S. of Alley N. of Douglas - W.S. of Richmond.

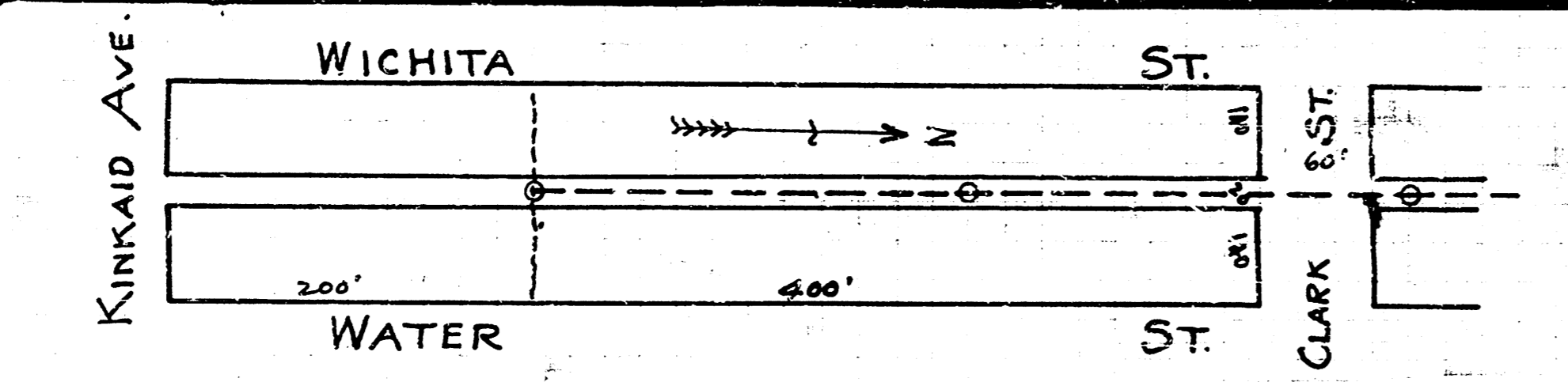
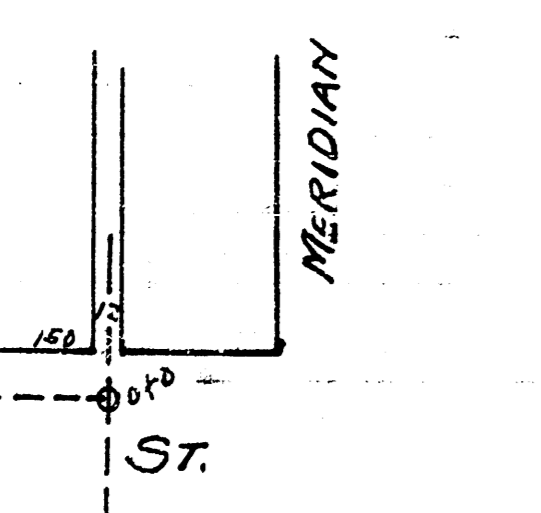


LAT. 5, DIST. A
S.S. No. 21

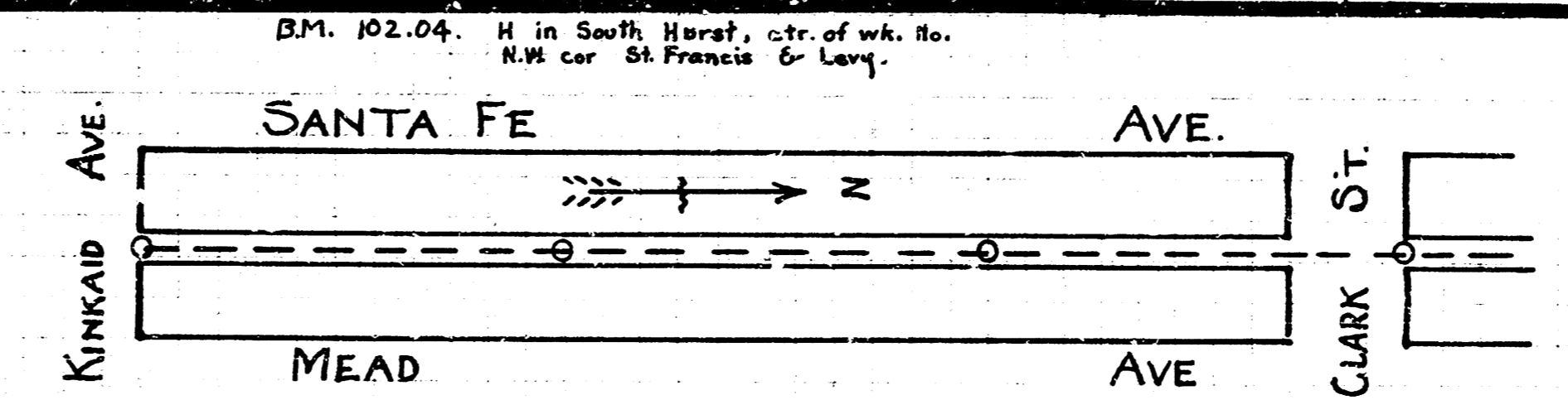
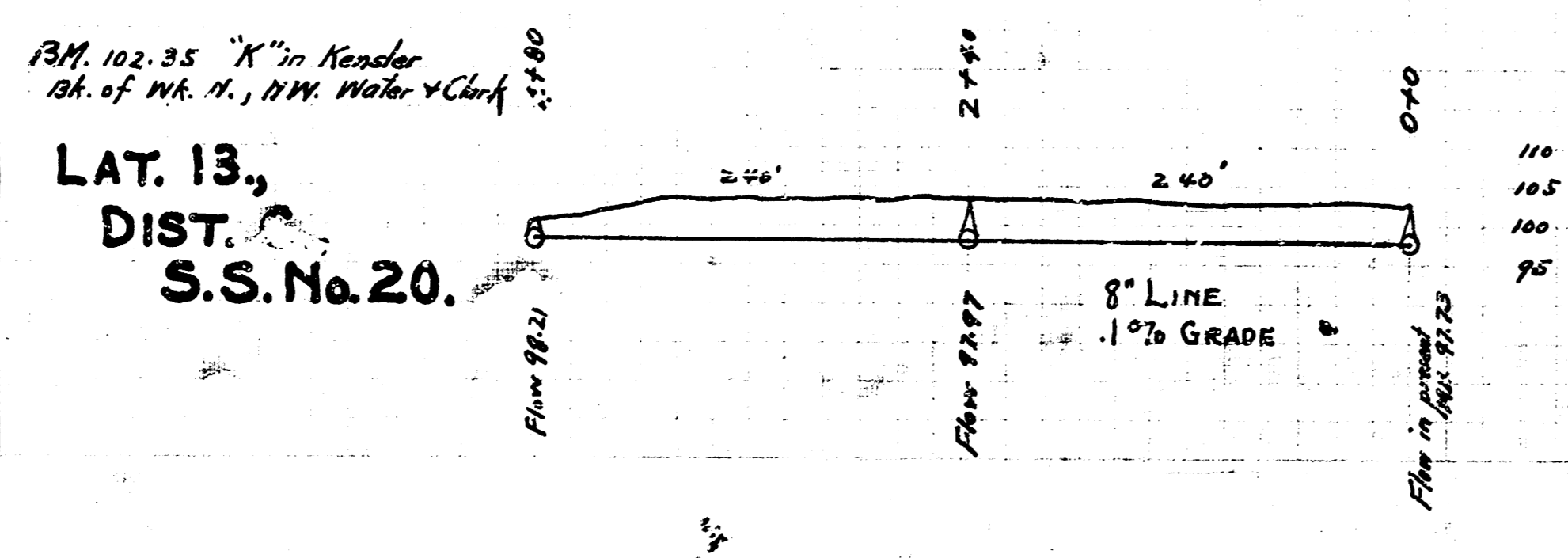


LAT. 4,
DIST. A,
S.S. No. 21

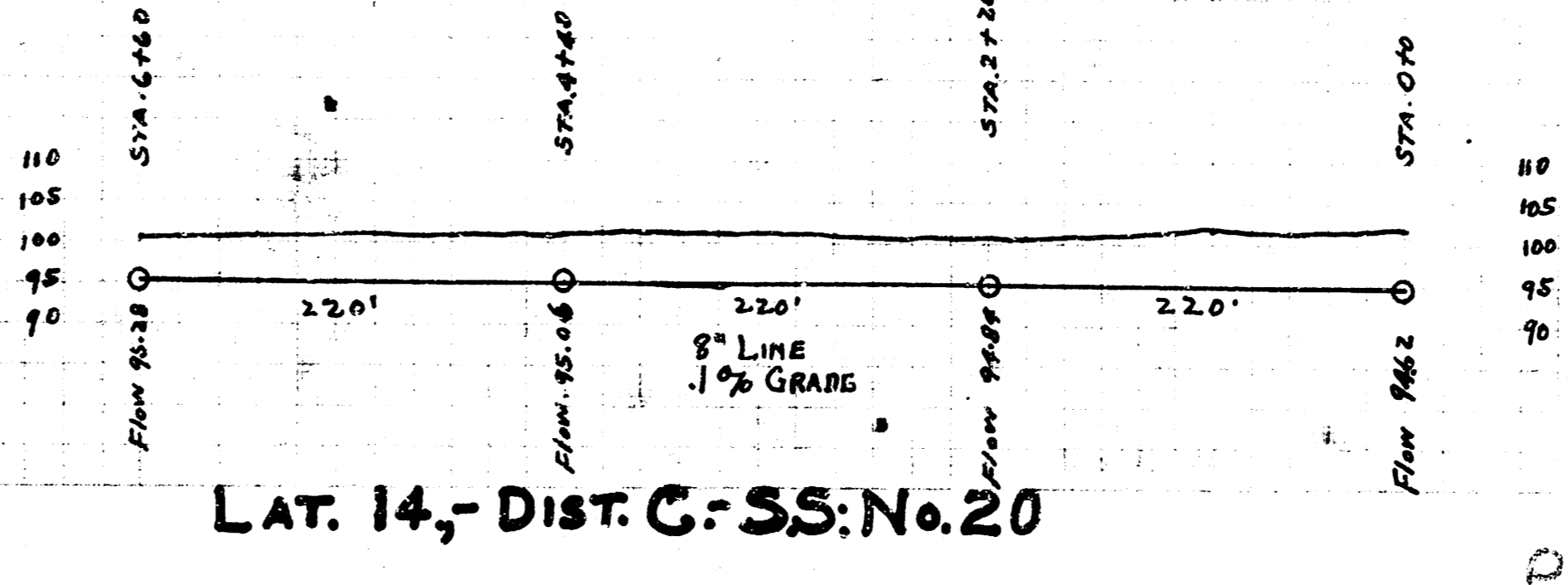
B.M. 116.21 Sfd.
N.E. cor Meridian & 1st.



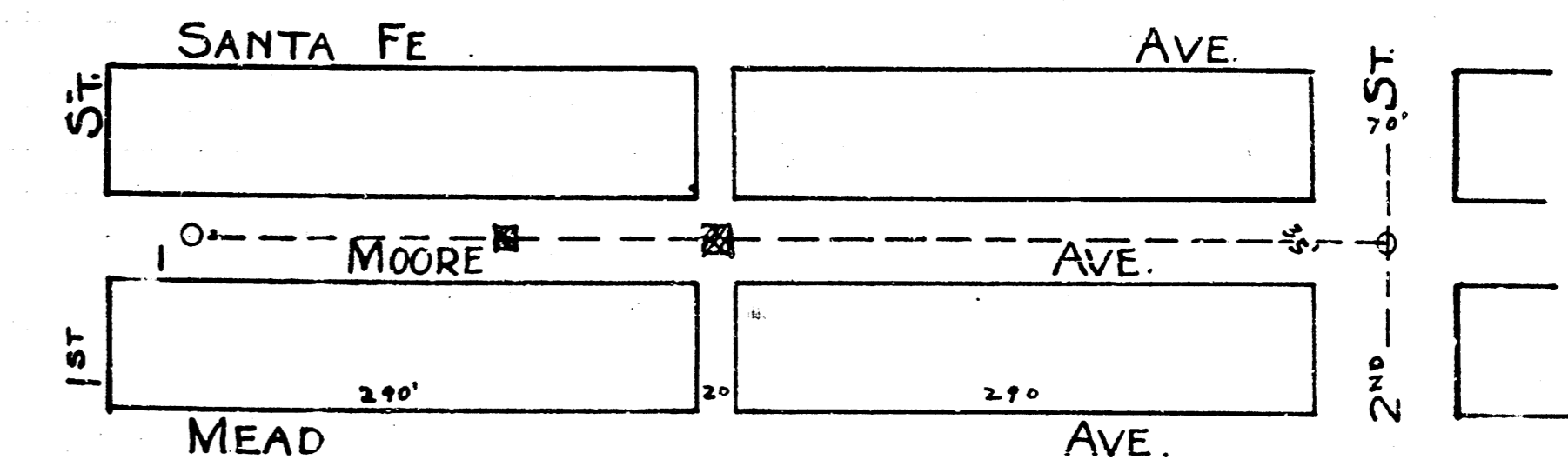
LAT. 13,
DIST. C,
S.S. No. 20.



LAT. 14, - DIST. C, S.S. No. 20



B.M. 1114 X on curb - S.S. of 1st - E. of fire hyd. near W.L. of Moore.



LAT. B - S.W.S. No. 5

