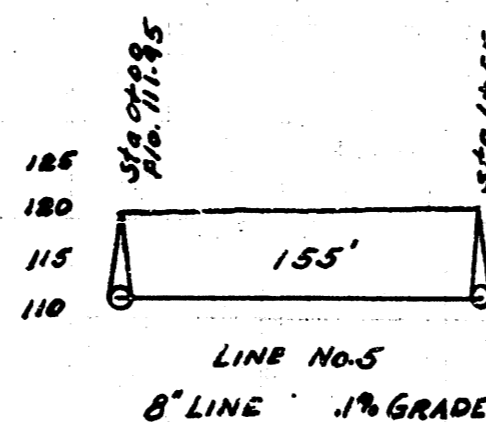
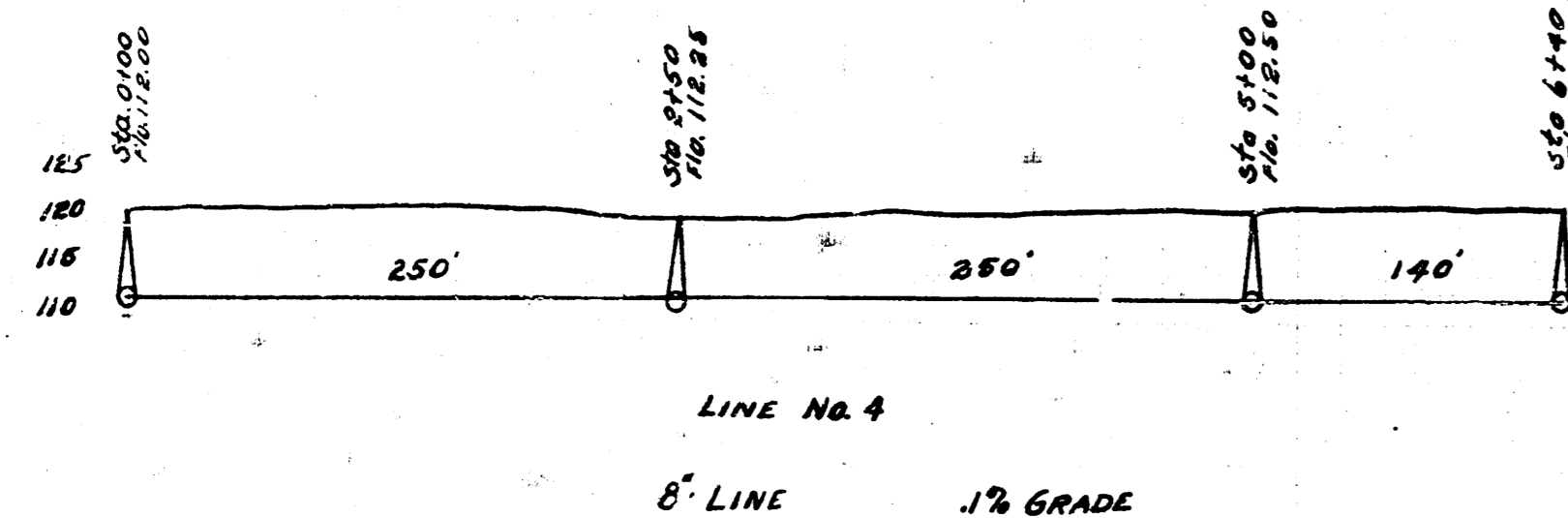
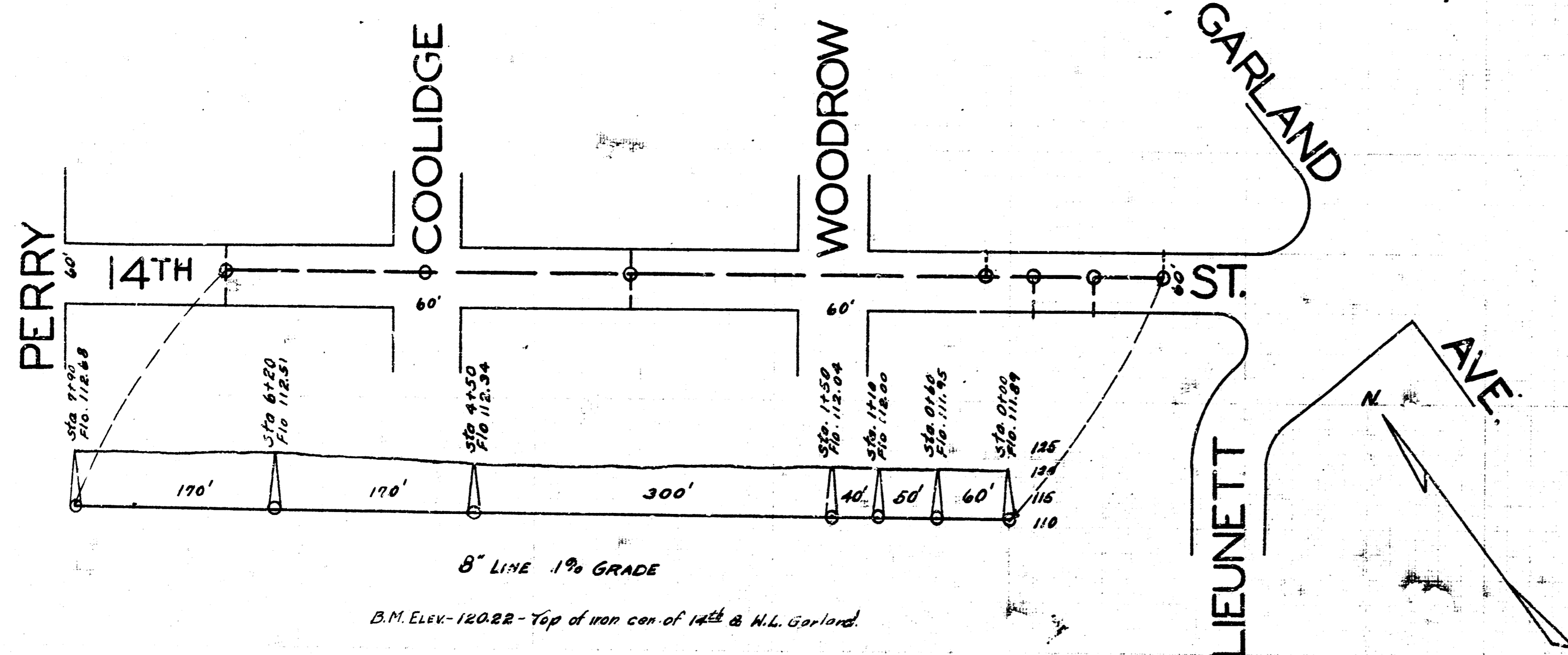


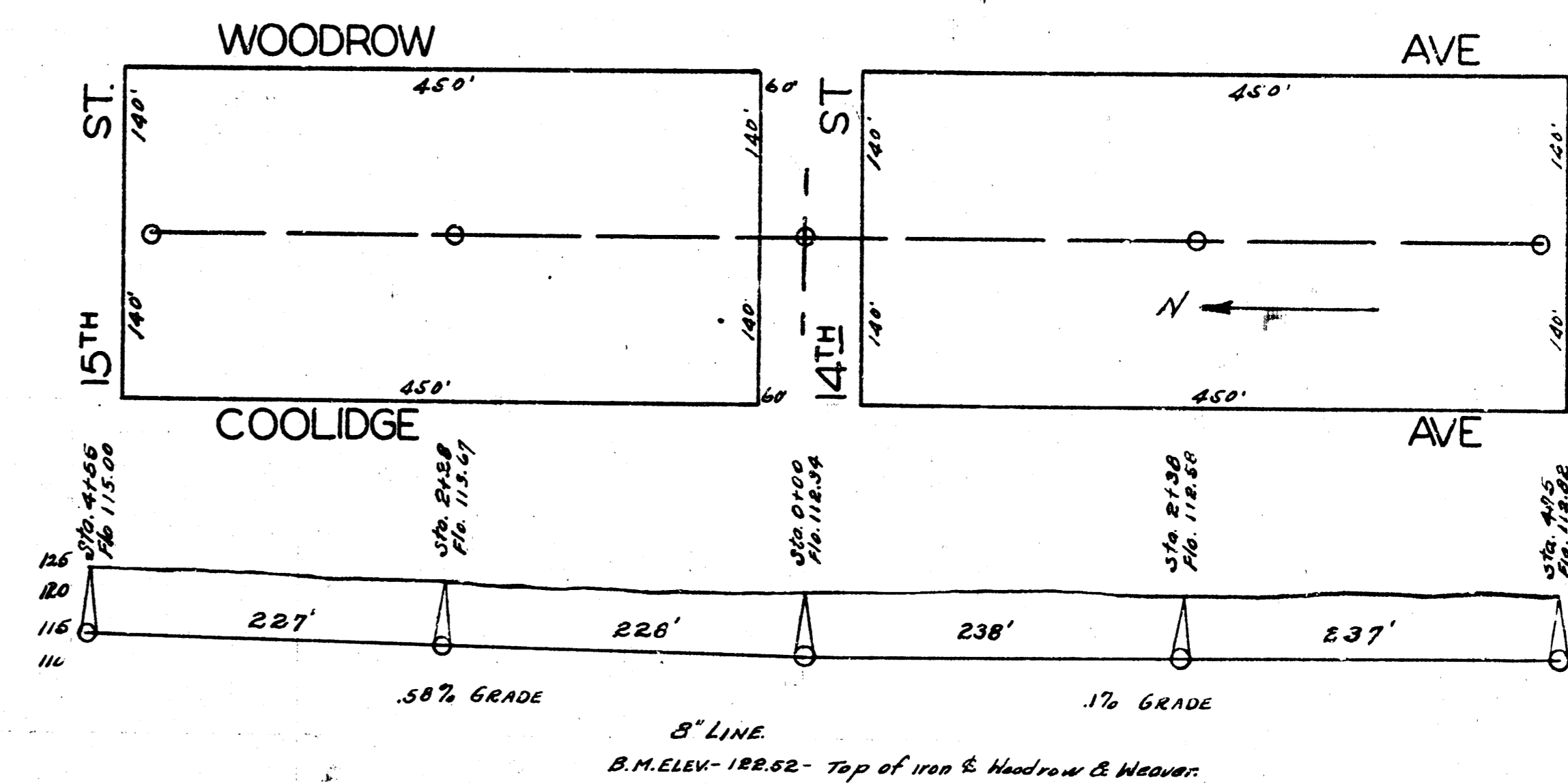
B.M. Elev. 120.22 - Top of iron con. 14th & Woodrow



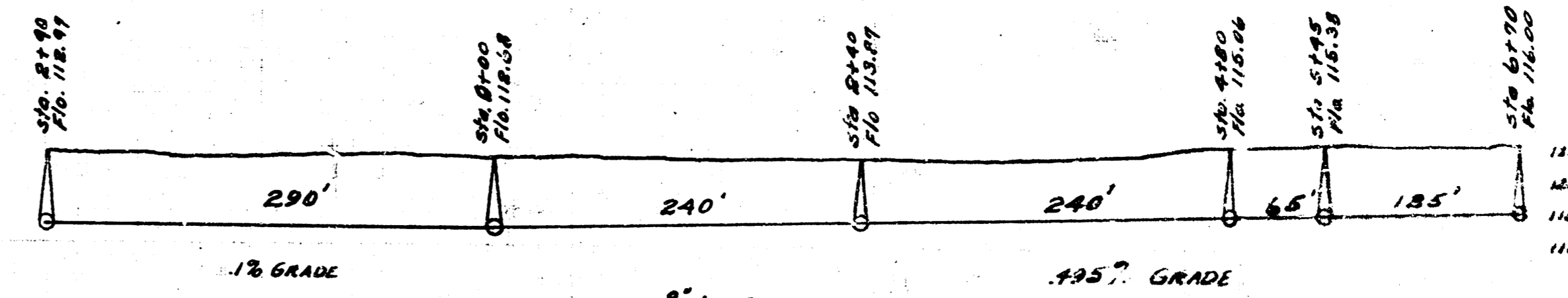
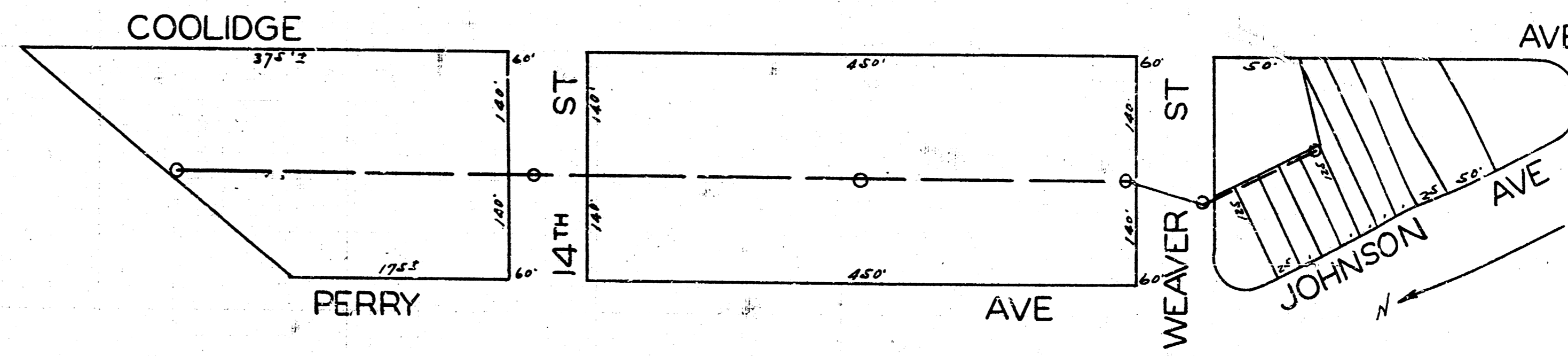
B.M. Elev. 120.22 - Top of iron con. of 14th & N.L. Garland



B.M. Elev. 120.22 - Top of iron con. of 14th & N.L. Garland

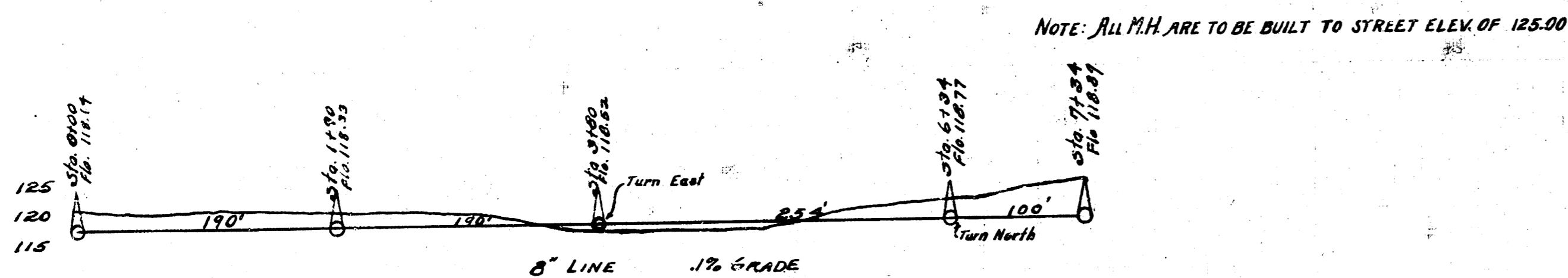
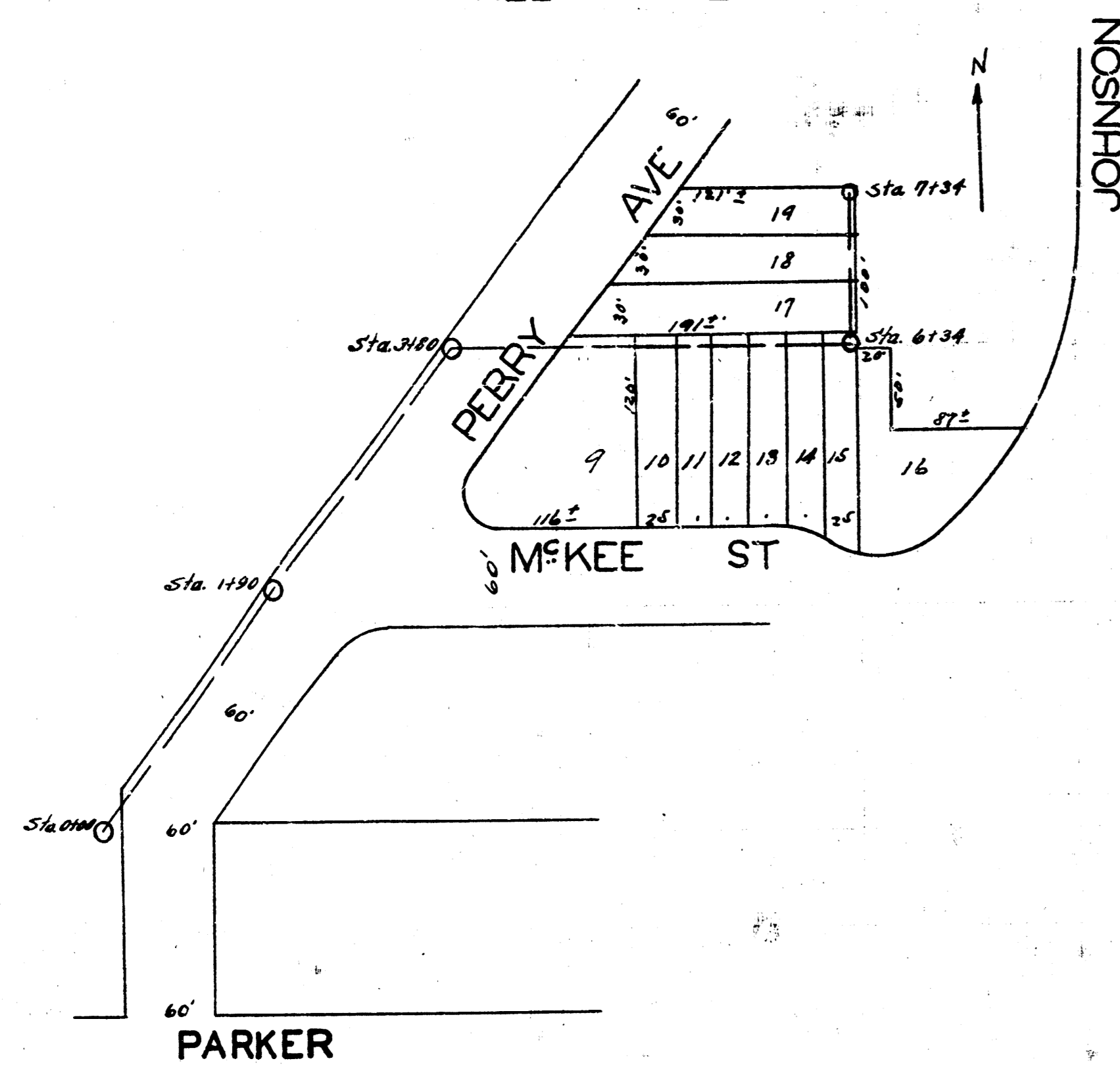


B.M. Elev. 120.52 - Top of iron S. Woodrow & Weaver



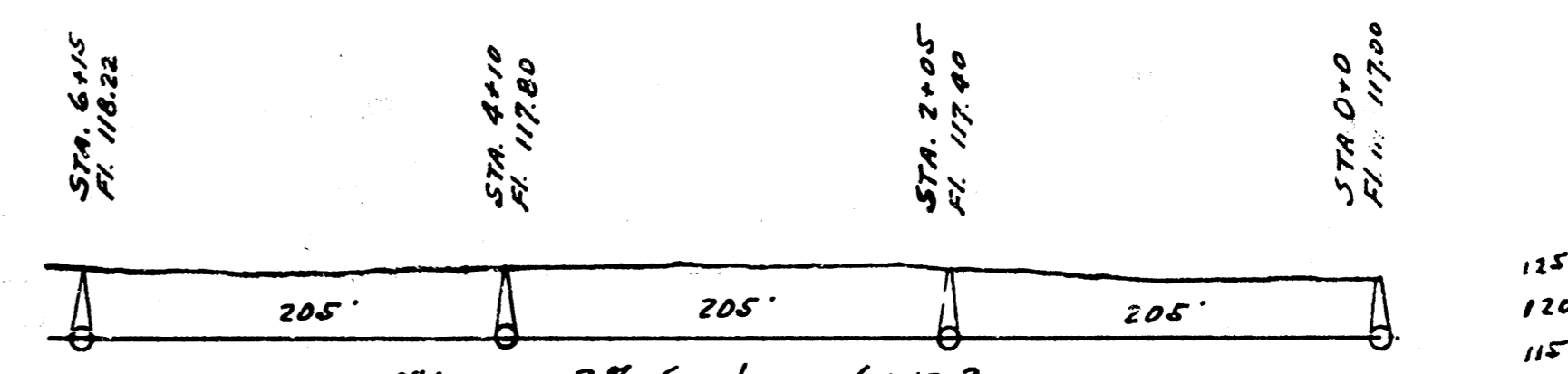
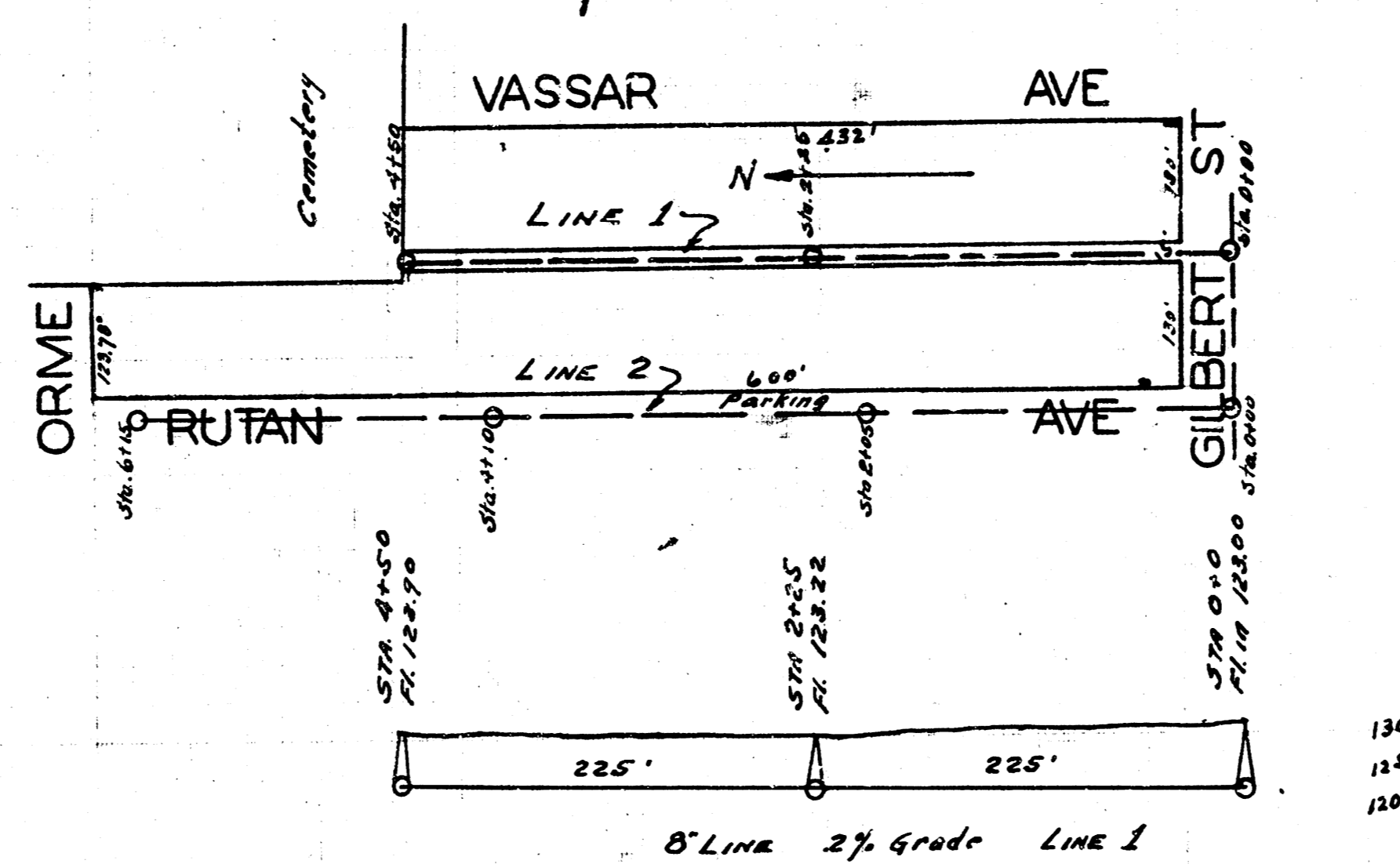
B.M. Elev. 123.50 - Top of iron S. Coolidge & Weaver

LAT. M, DIST. R, S.S. 20.
SHEET 2

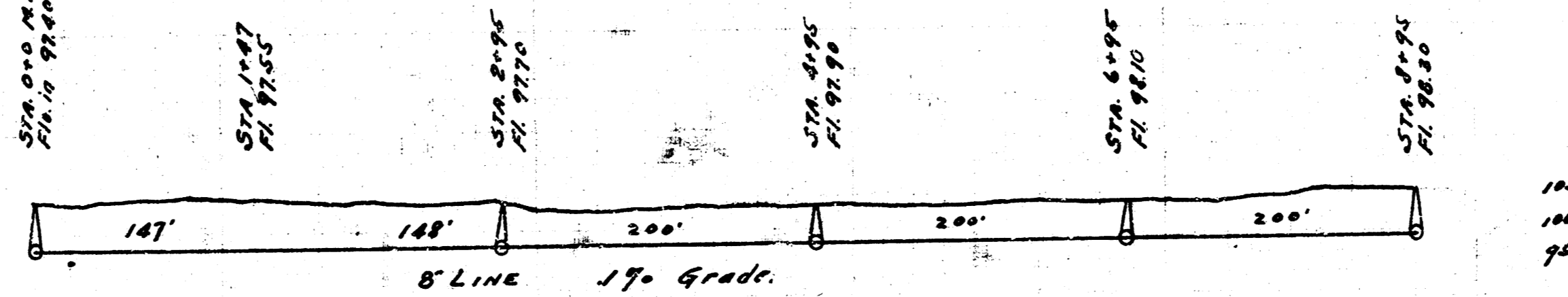
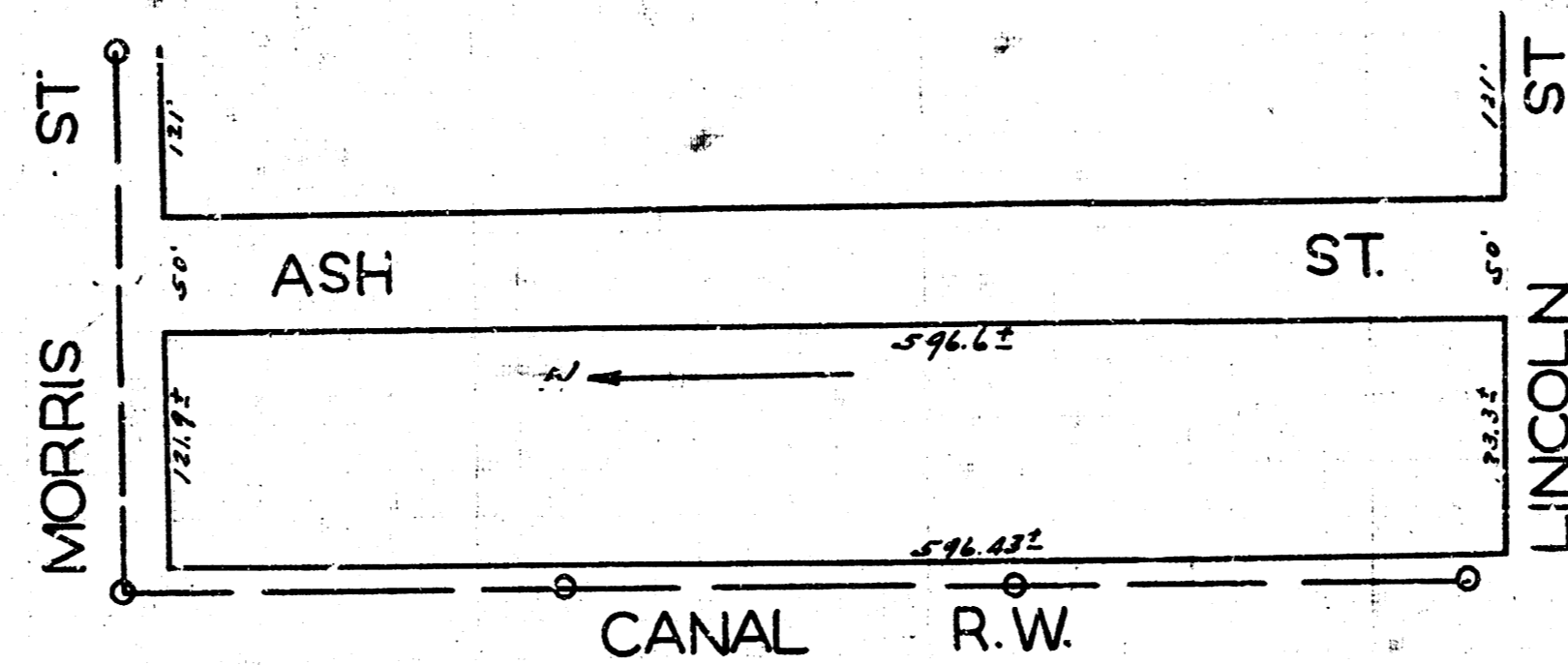


B.M. Elev. 120.82 - Top of iron N.S. of Garland and E. of 18th
121.88 - N. side of rim of M.H. on W.S. of Tracy & 114' N. of Parker

LAT. G, DIST. 6, S.S. 12.



B.M. Elev. 122.18 P in Pollock Frt. W. N.W. Rutan + Orme.



B.M. Elev. 103.97 + on ch N. of C.B. N. of Bldg on W.S. Madison.

LAT. A, DIST. 5, S.S. 12.