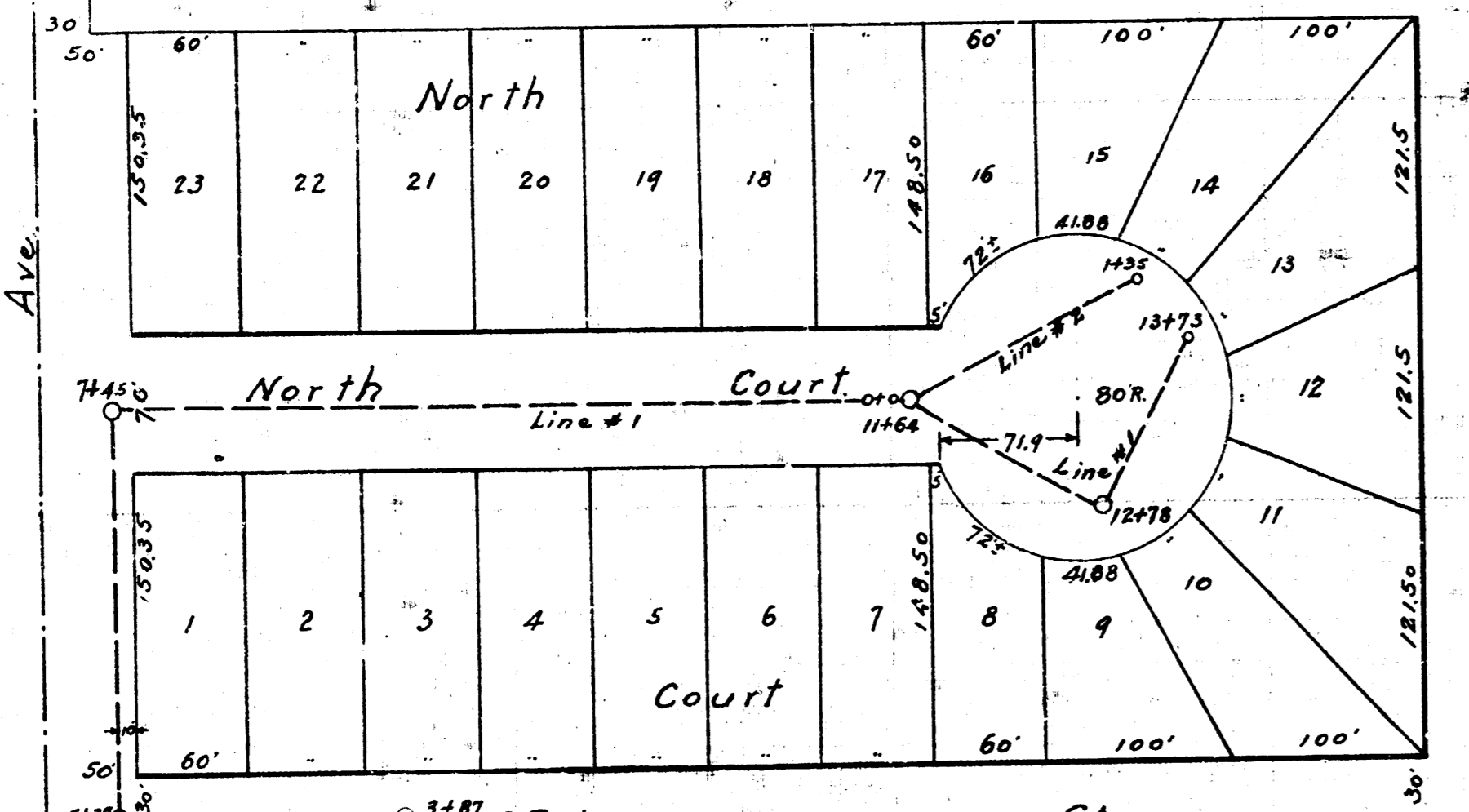


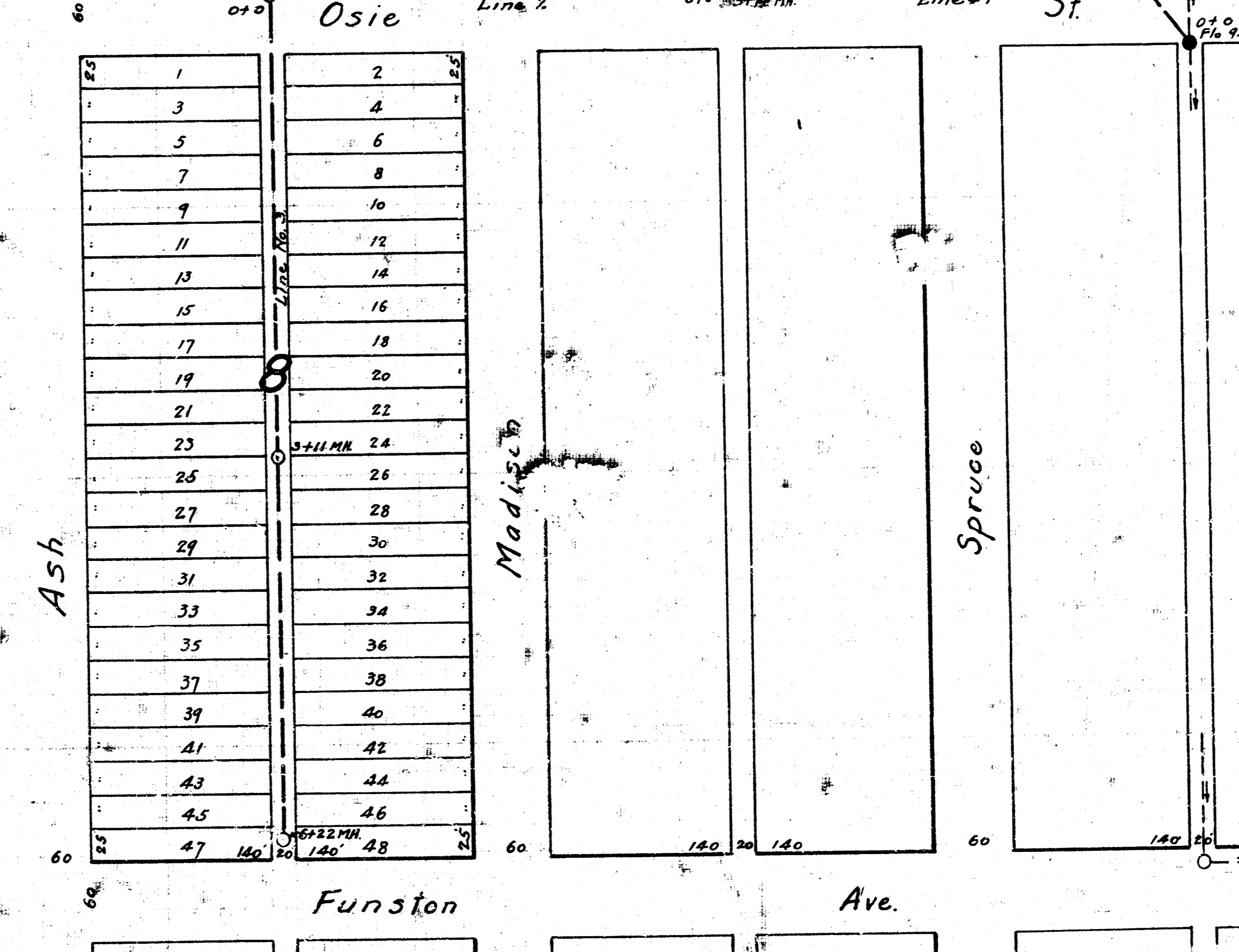
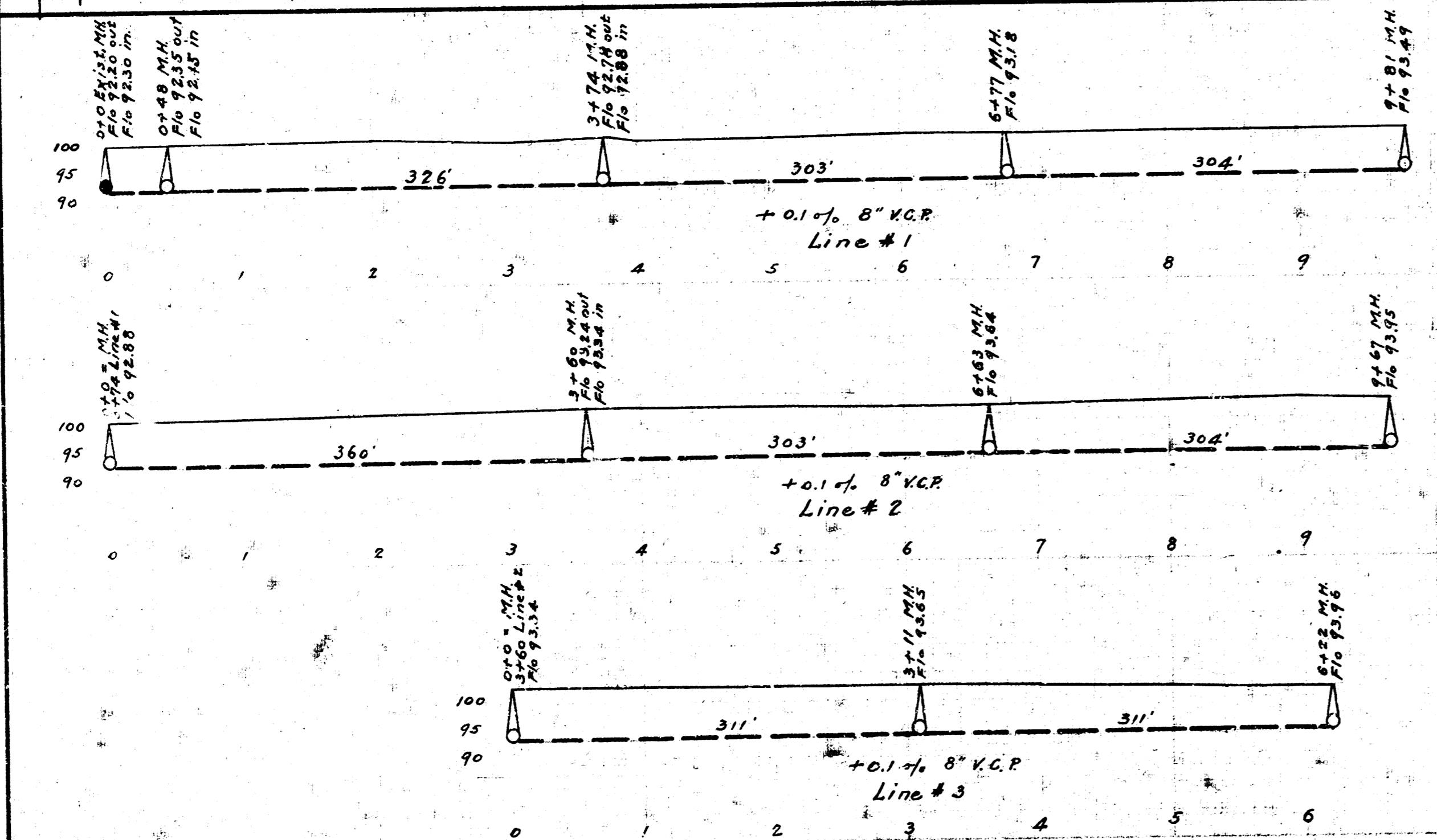
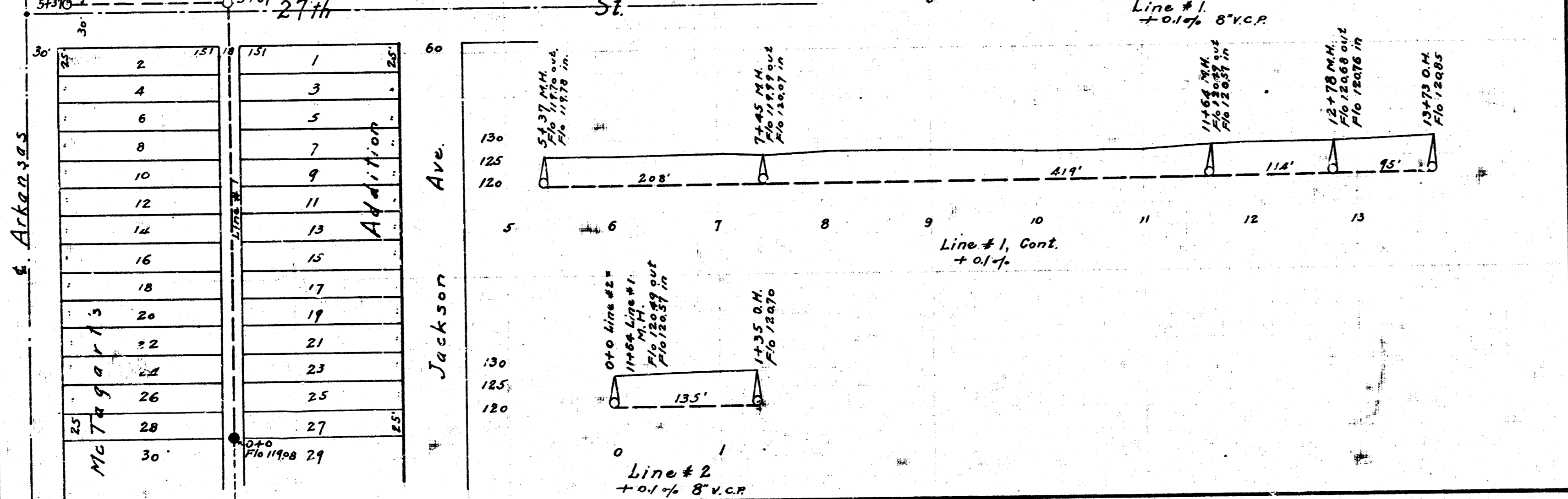
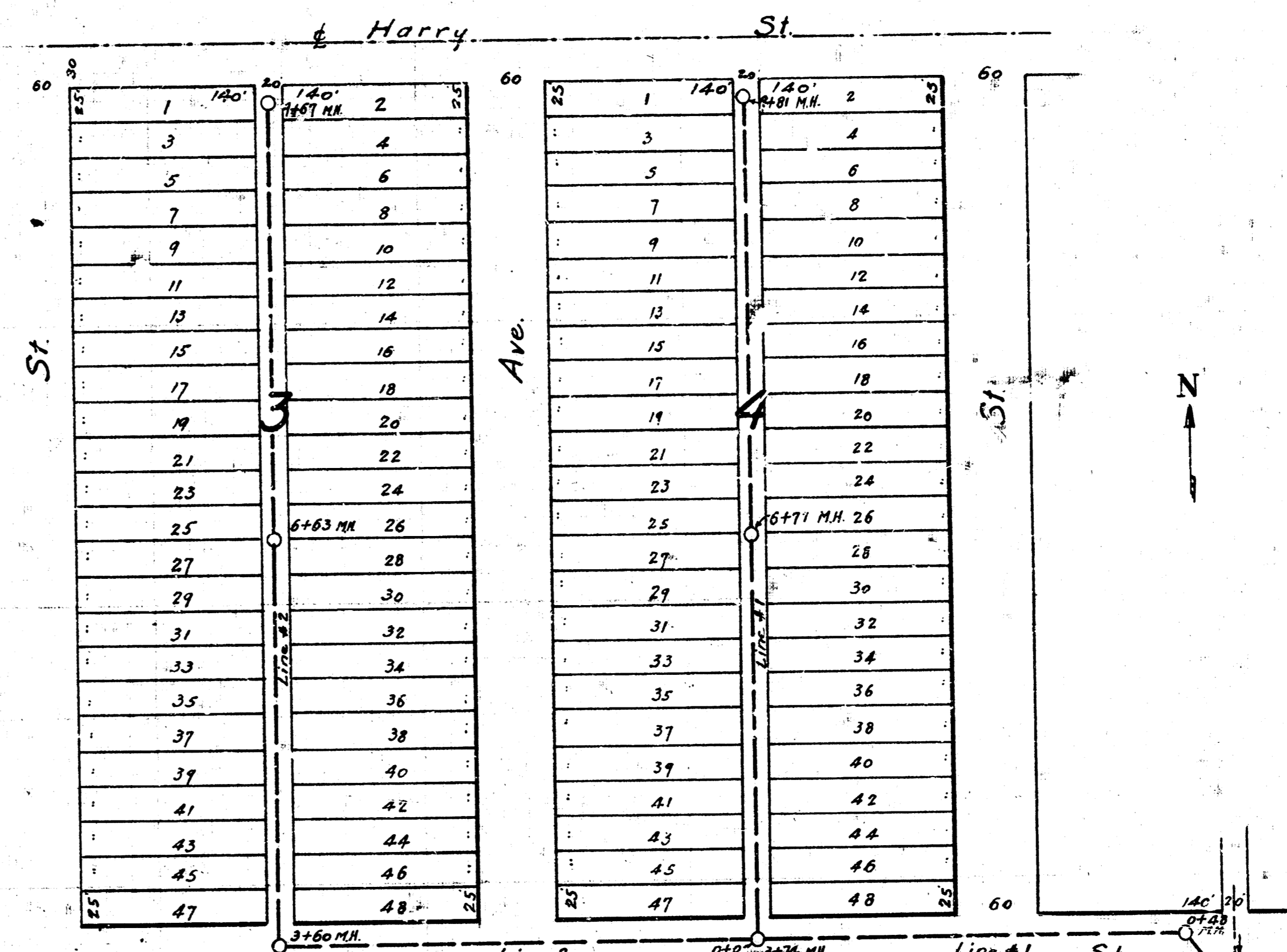
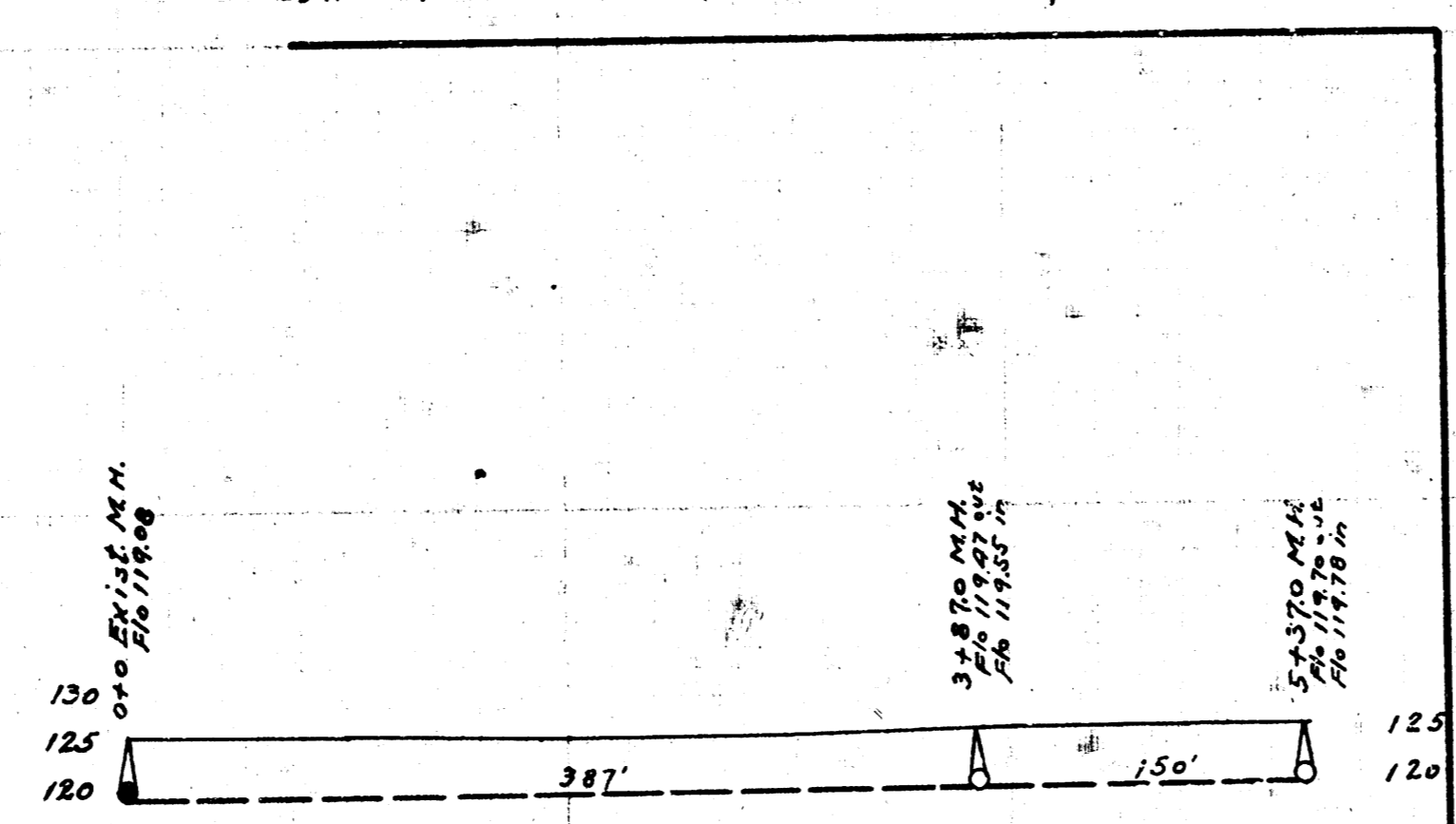
**LAT. L, DIST. T, S.S. NO. 20
NORTH COURT ADD.**

B.M. 12620 S. Rm. M.H. Sta. 0+0 Line # 1.
B.M. 12620 NE N. cl. on E.S. Arkansas & N.S. North Court.
B.M. 12917 End of N. Driveway Curb frt of H# 808



**LAT. 2, DIST. AS, S.S. NO. 12
BLOCKS 3, 4, & 8, LINWOOD PARK ADD.**

B.M. 10191 Stop bench in RR #3 Alley bet Spruce & Madison, S.L. Harry.
B.M. 9338 - T.P. N.S. Funston in alley bet Grove & Spruce.
B.M. 10030 X on Hub Guard N.S. Conc. Culv. 25' E. of C. Grove & Funston.
B.M. 10278 Stop bench in RR Sta. A+90 Line # 3.
B.M. 10280 X on Curb Red. S.E. cor. Harry & Ash.



PUBLIC SERVICE DEPARTMENT
ENGINEERING DIVISION
L.K. WHITE, CITY ENGINEER.
CITY OF WICHITA, KANSAS.
DRAWN BY C.H. MILLS.
APRIL, 1945.