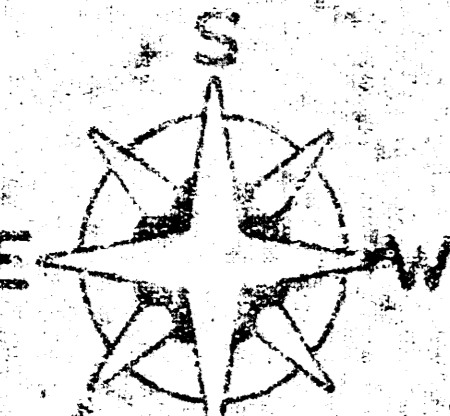


Sta. 0+00, Line 8
Const. Std. Type 'B'
M.H. begin encasement, North



Rails to be Removed
by "Others"

Rail Constr. by "Others"

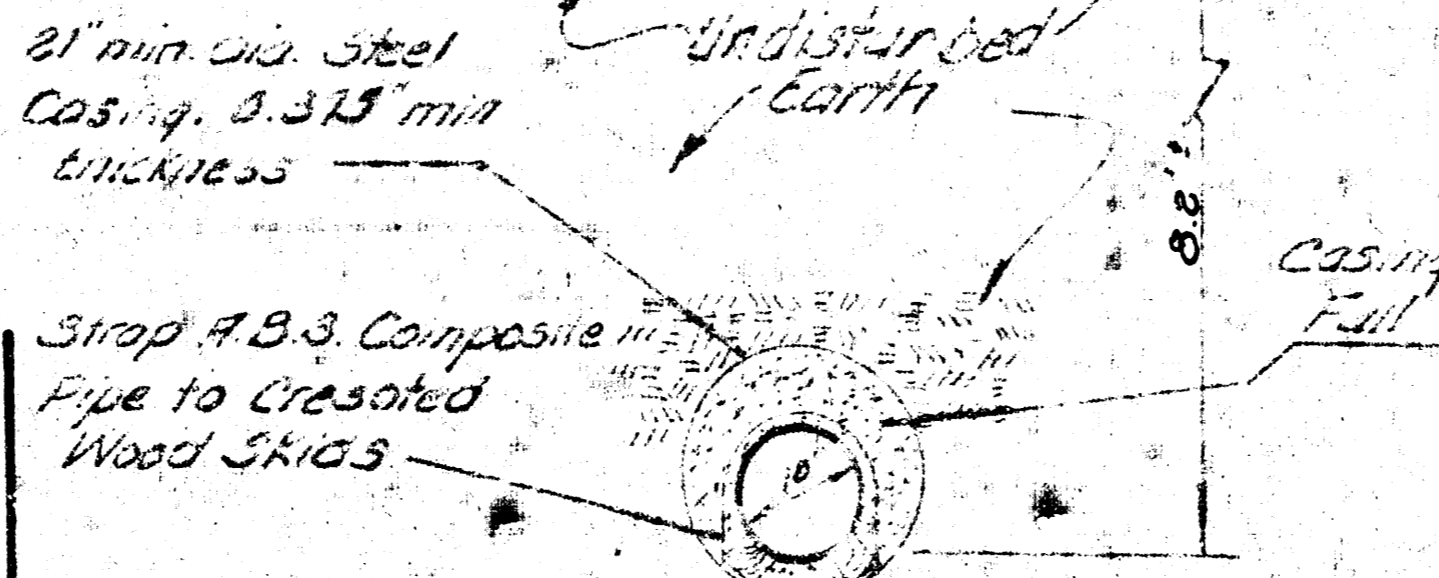
4+47 4
Sta. 4+48 Const. Std. Type
'B' M.H. - 6° North + 6° East
of the Proposed E of new
Pavement - Rim Elev. = 114.85

2+31 5
Sta. 2+35 Const. Std. Type 'B'
M.H. 4° 30' So. of the North
Prop. Line. Rim Elev. = 113.70

4+14 2
Sta. 4+15 Const. Std. Type
'B' M.H. 6° East of E
of Waco Ave. Rim Elev.
= 114.60

Proposed location
of 10" Water Line
34 1/2" Steel casing
WICHITA

Top of Rails
Proposed Elev. 114.11'



TYPICAL SECTION
Tunnel Under No. - Pop. Rail Road
Note: ① 10" A.B.S. Composite Pipe to be placed under Railroad
Tracks by jacking + shoring pipe into place
② Ripper line to be used with 21" dia. steel pipe. Good
used steel pipe may be used when approved by the
Field Engineer
③ Plug Ends of Tunnel w/ same concrete mix used in
Municipal Case

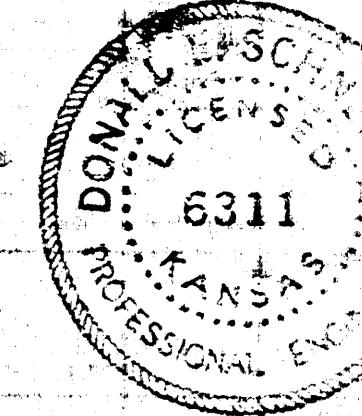
CAUTION
UNDERGROUND
UTILITIES
Please check with K.G. & E. or
Sullivan Storm Drain
Trenching Co. for Location

See Sheet No. 4 For General Notes

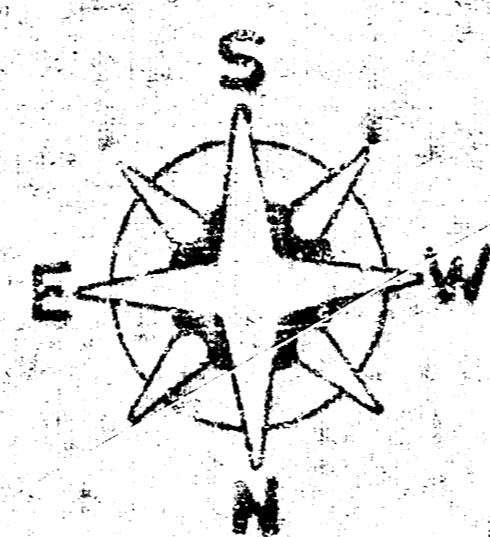
See Sheet No. 4 For General Notes

Sta. 0+00 Existing M.H.
begin 10" A.B.S. Comp.
Pipe West @ 10% Gr.

Reconstruct a Sewer to Supplement a Portion
of District 'Y', Sanitary Sewer No. 80
on Seaward St. from Greenwood to 1st St.
City of Wichita, Kansas



D.M. 112.68 Top E. Co. Riverview Cr. East. 73' North of Cr. 2nd St.
B.M. 112.79 3' Face of Wall S.E. 3rd St. E.L. of Alley W. of Water St.
N.W. Cor. 3rd & 2nd W. 2nd St.



Scale: 1" = 30'

6+54⁶

Sta. 6+55 Constr. 3rd Type B M.H. over existing line South. Rim Elev = 113.06

Removed & replaced
45 L.F. 8" pipe
south of M.H.

8+09³

Sta. 8+09 Constr. 3rd Type B M.H. Rim Elev = 111.40

SECOND ST.

RIVERVIEW

GREENWAY BLVD

6+87⁰

Sta. 6+85 Constr. 3rd Type B M.H. over existing line North.

Remove M.H. extend 8' S.S. to Proposed Manhole

Caution - Bell Manhole (size = 8' x 3' W. x 5' H.)

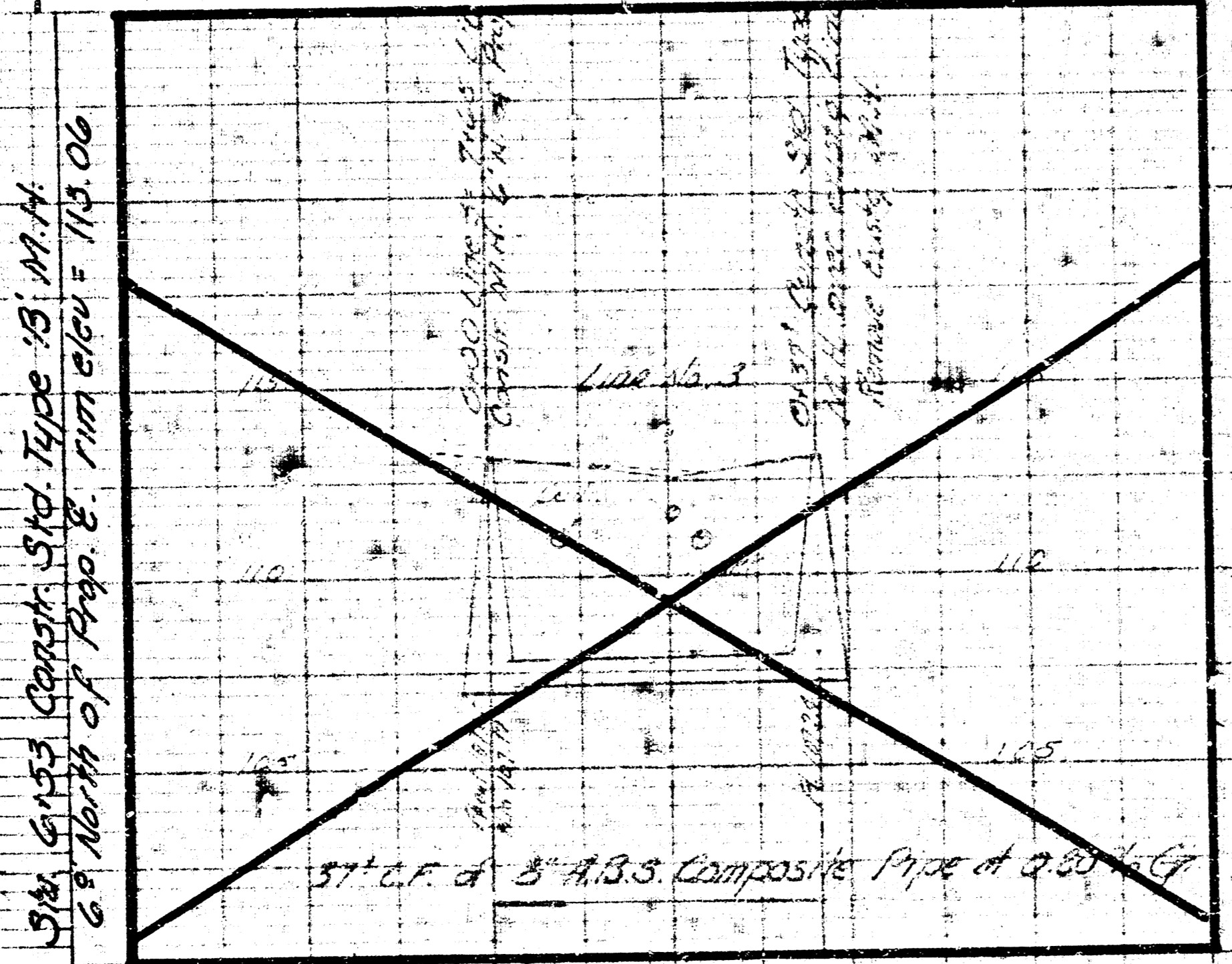
NOTE: TREES INDICATED TO BE SAVED AT STA. 7+45 AND 9+06 SHALL BE REMOVED IN SUCH A MANNER THAT WILL PREVENT DAMAGE TO THE TREES, SO THAT THEY ARE SUITABLE FOR REPLANTING. TREE AT STA. 7+45 SHALL BE REPLANTED IN ITS ORIGINAL LOCATION. TREE AT STA. 9+06 SHALL BE TRANSPLANTED TO A LOCATION DESIGNATED BY THE ENGINEER. TREES SHALL BE WATERED AFTER THEY HAVE BEEN REPLANTED. THIS WORK WILL NOT BE PAID FOR DIRECTLY AND SHALL BE CONSIDERED AS SUBSIDIARY TO THE OTHER ITEMS OF WORK.

10+81⁶

Sta. 10+80 Constr. 3rd Type B M.H. over existing 8" San Sewer North.

Note: See Sheet No. 2 For General Notes

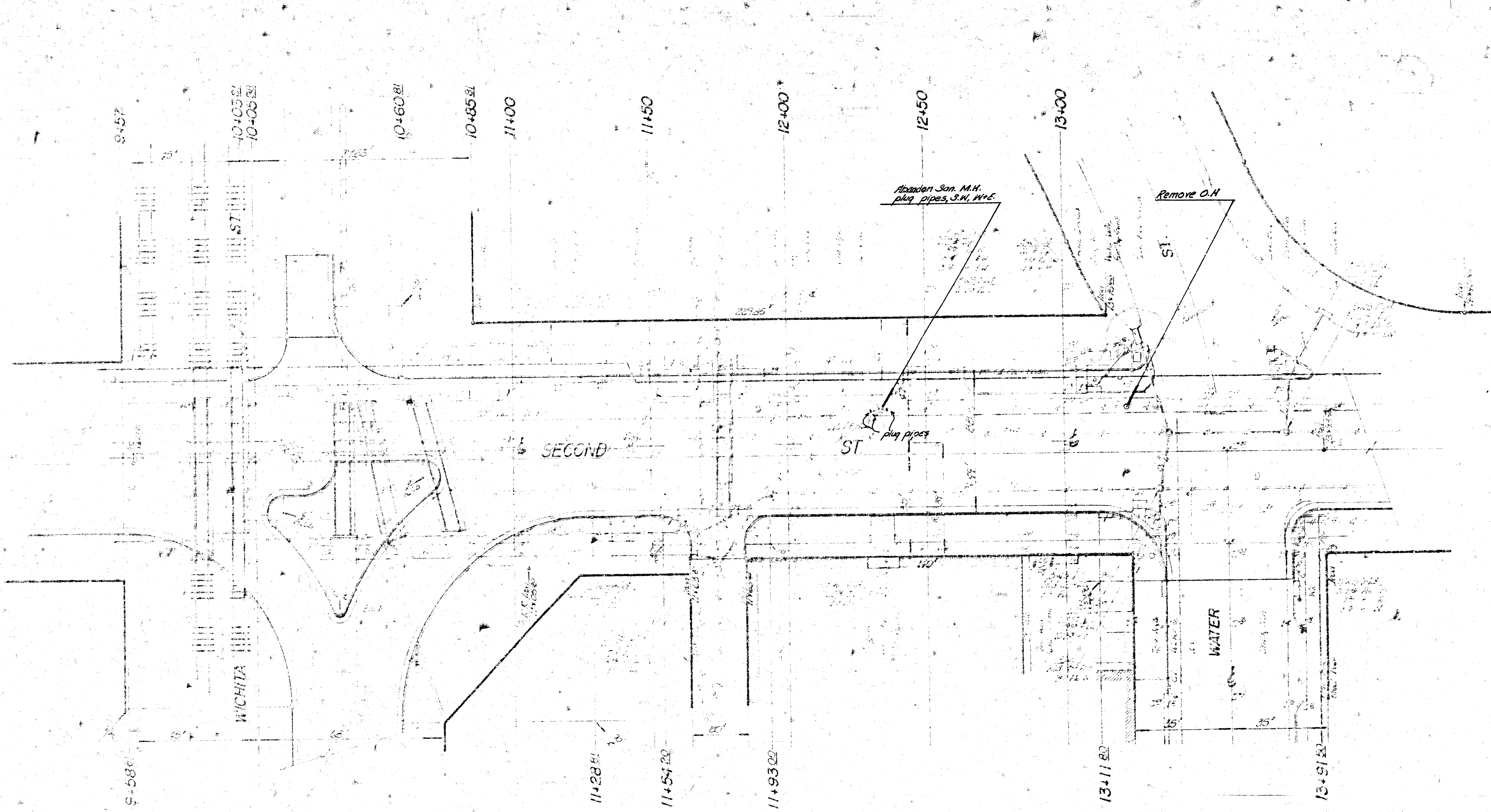
CAUTION
UNDERGROUND UTILITIES
Please check with K & E or
Southwestern Bell
Telephone Co. for location.



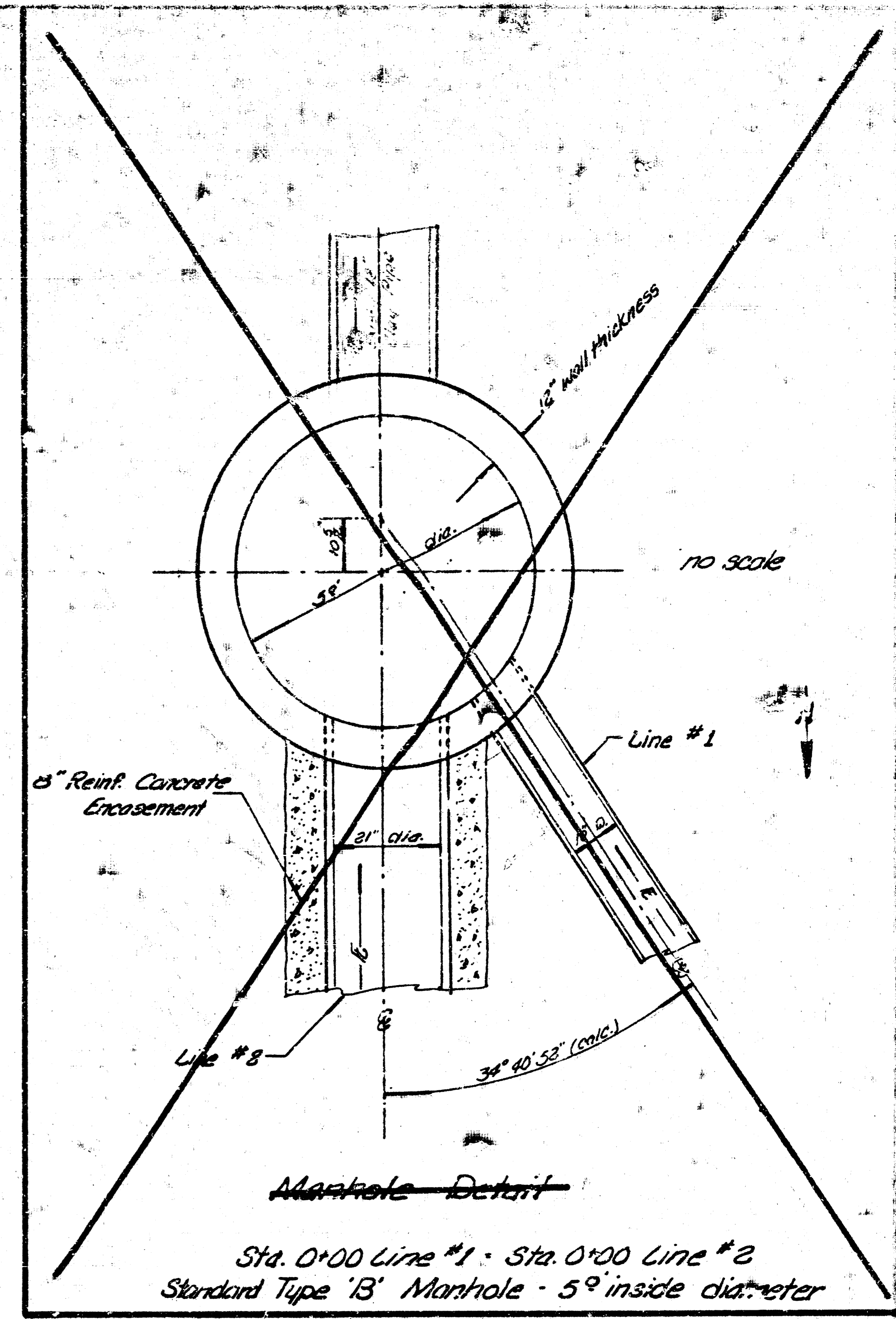
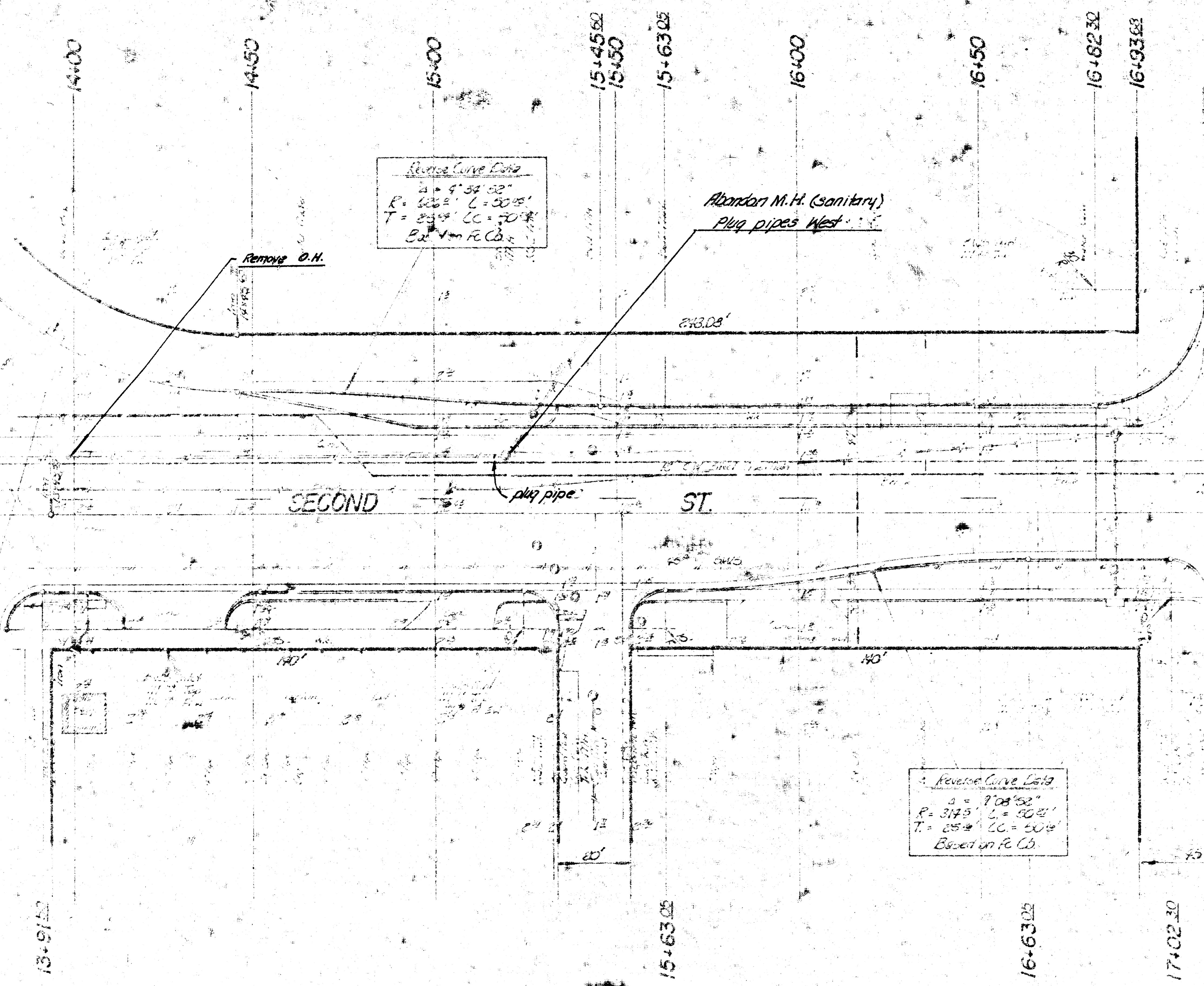
Sta. 6+85 Constr. 3rd Type B M.H. 40' north of existing 8" over existing 8" San Sewer. rim elev = existing F.H.

375' L.F. 8" A.B.S. Composite Pipe at 0.10% Grade

Reconstruct a Sewer to Supplement a Portion of Dist. 4, S.S. No. 20 in 2nd St. from Greenway to Main St. Proj. No. 11113-576061



Reconstruct a Sewer to Supplement a Portion of
 District '4', Sanitary Sewer No. 20
 IN Second St. FROM Greenway to Main Street
 Project Number: DBKJ 574061



GENERAL NOTES

1. THE CONTRACTOR FOR THIS PROJECT WILL BE REQUIRED TO COORDINATE HIS WORK WITH THE CONTRACTOR FOR CONSTRUCTION OF THE STORM SEWER IN SECOND STREET FROM GREENWAY BOULEVARD TO MAIN STREET.
2. THE WORK SPECIFIED AS MANHOLES ABANDONED SHALL CONSIST OF REMOVING THE TOP 4' OF THE MANHOLE, PLUGGING ALL PIPES IN THE MANHOLE, AND FILLING THE REMAINING PORTION OF THE MANHOLE WITH SAND. THE TOP TWO FEET OF THE EXCAVATION SHALL BE BACKFILLED WITH EXCAVATED MATERIAL COMPACTED TO A DENSITY EQUAL TO OR GREATER THAN THE ADJACENT MATERIAL. PIPE PLUGS WILL BE PAID FOR SEPARATELY AT THE PRICE BID PER EACH PIPE PLUG.
3. ALL EXISTING SANITARY AND STORM SEWER PIPES WHICH ARE TO BE ABANDONED SHALL BE REMOVED WHERE THEY CONFLICT WITH NEW CONSTRUCTION AS APPROVED BY THE ENGINEER. THE ENDS OF THE REMAINING PORTIONS OF THE ABANDONED SEWERS SHALL BE PLUGGED.
4. THE LIMITS OF PAVEMENT REMOVAL AND WALK REMOVAL SHALL BE AS APPROVED BY THE ENGINEER.
5. THE LIMITS FOR PAVEMENT REPLACEMENT AND WALK REPLACEMENT SHALL BE AS DIRECTED BY THE ENGINEER.

Reconstruct a Sewer to Supplement a Portion of District '4' Sanitary Sewer No. 20 in Second St. from Greenway to Main Street
PROJECT NUMBER: DSKJ 576061
4/4