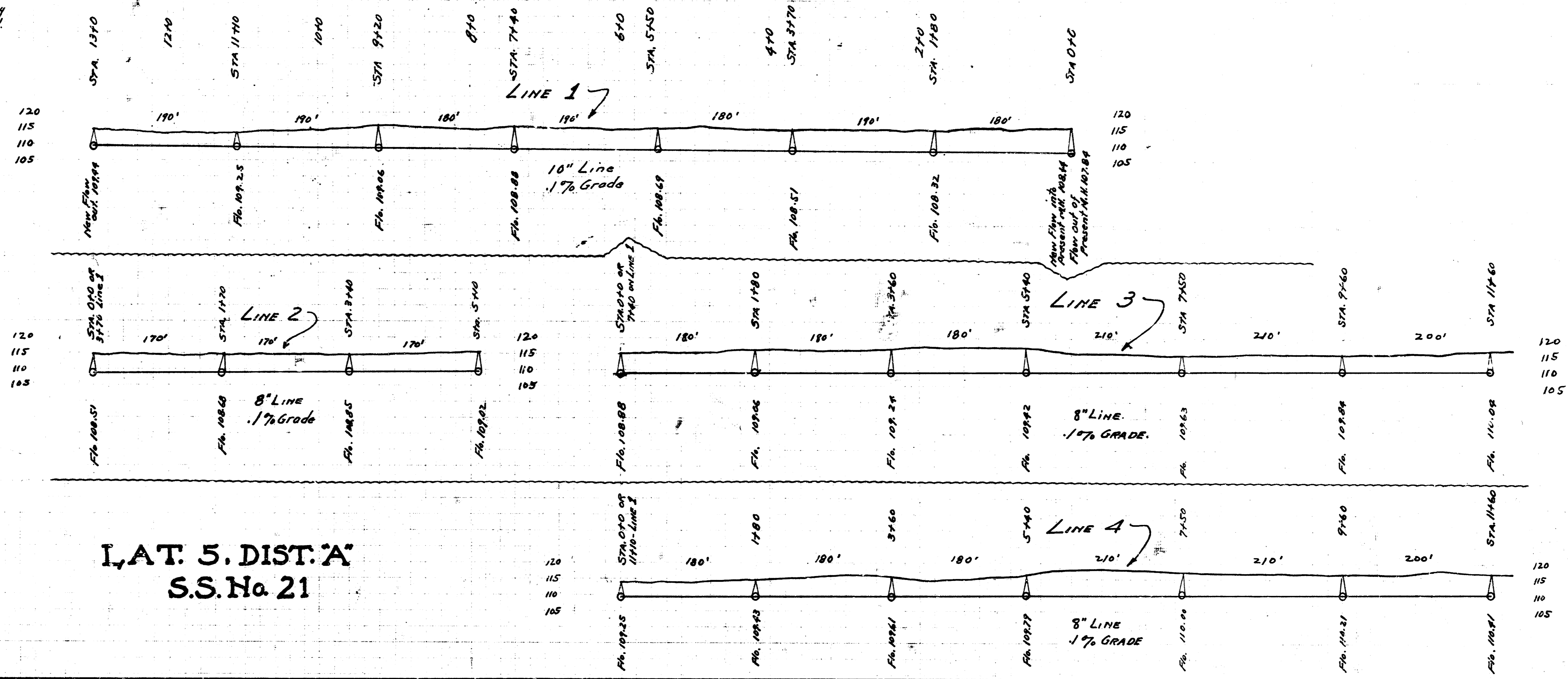
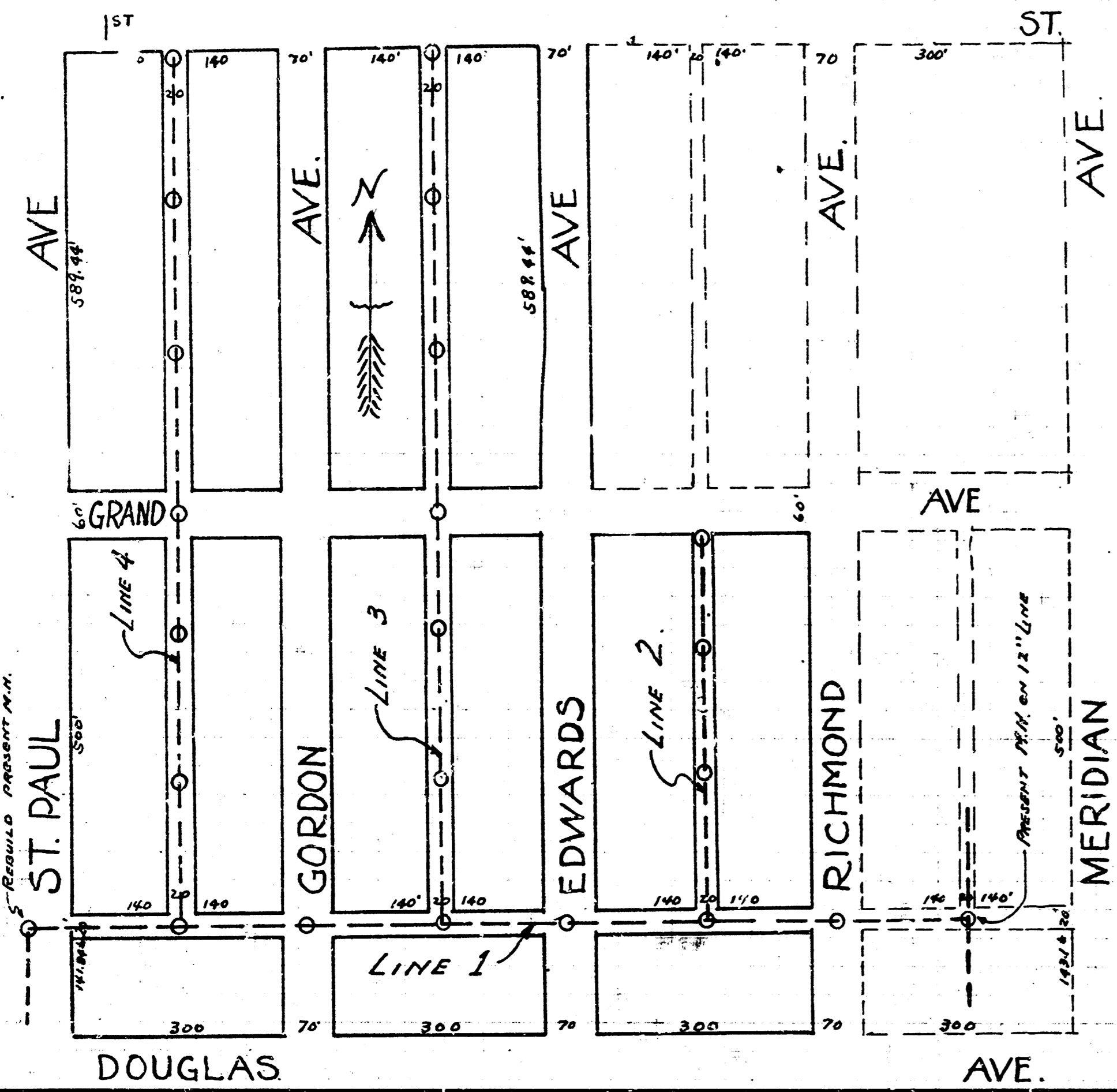
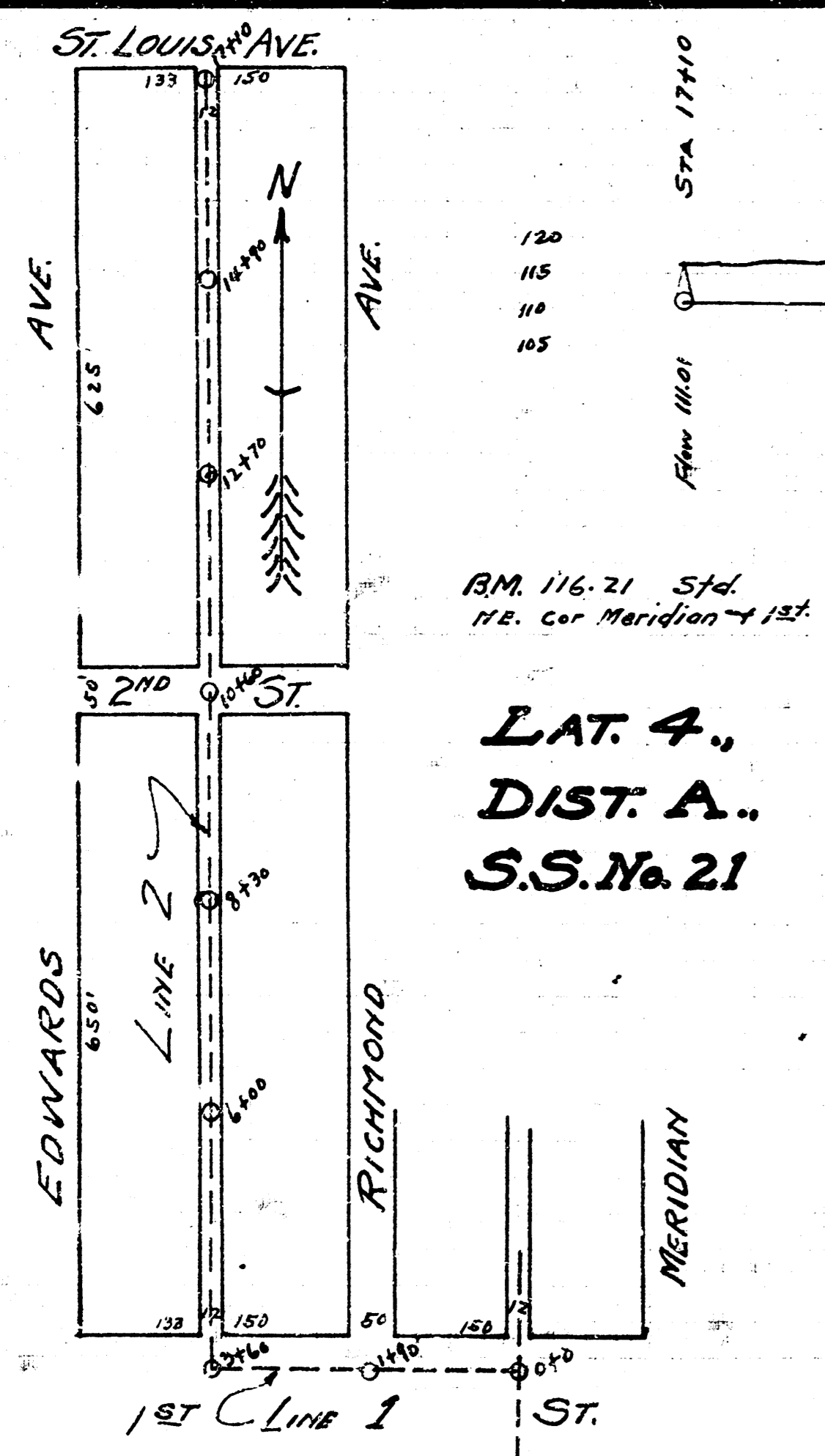


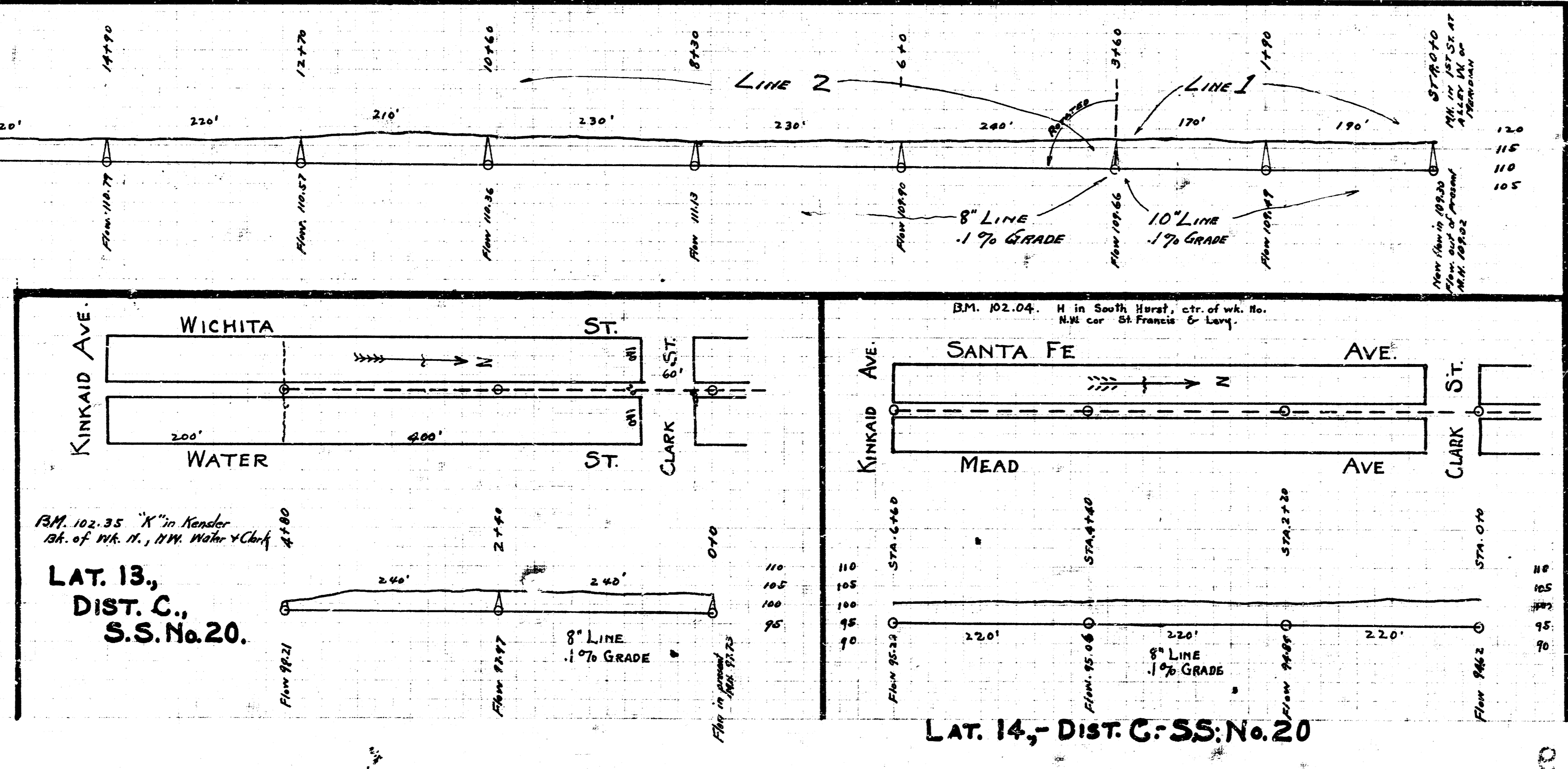
B.M. 114.86 "K" in Kensler in ctr. wk. N.S. of Alley N. of Douglas - W.S. of Richmond.



LAT. 5. DIST. 'A' S.S. No. 21

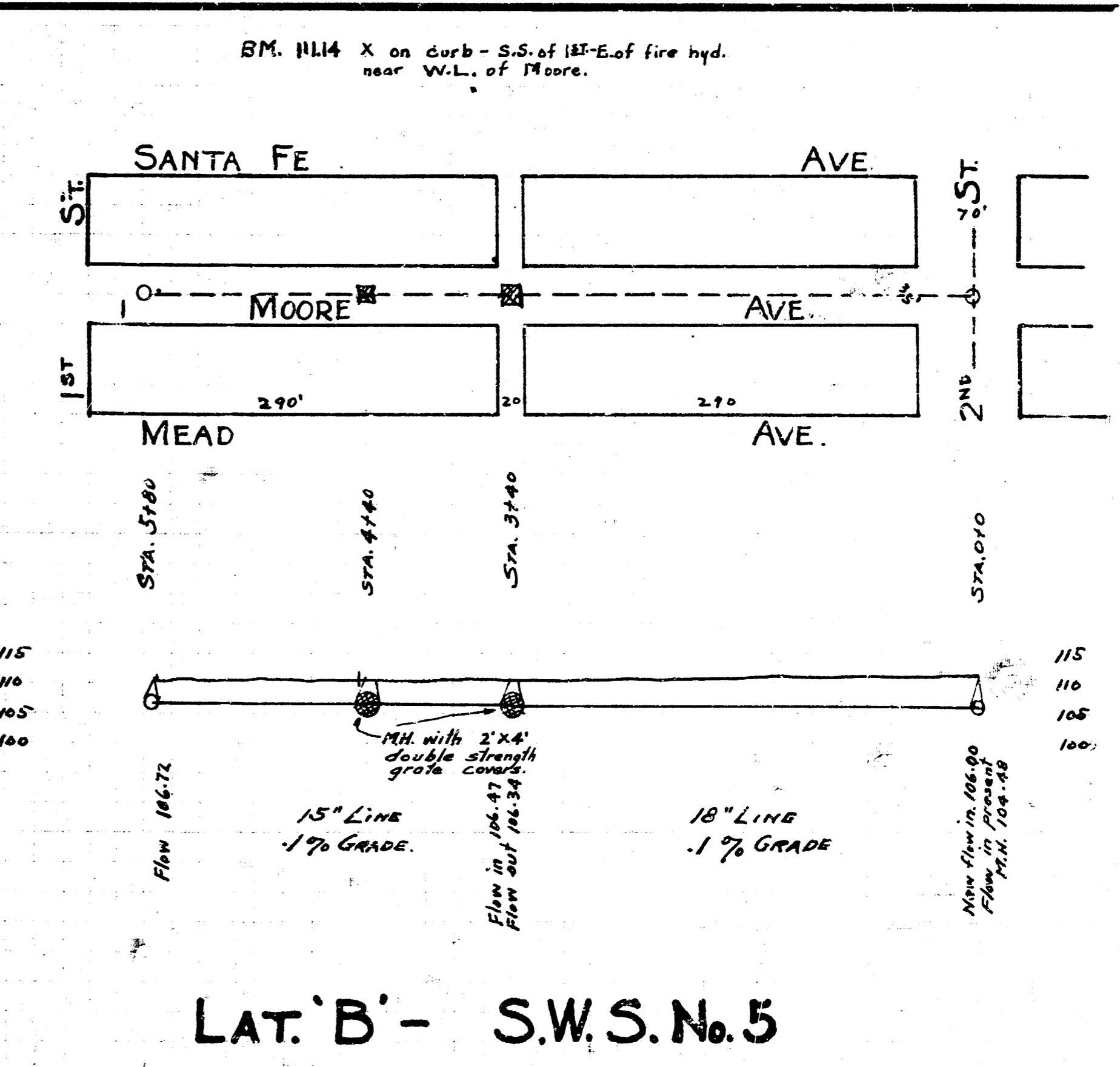


RM. 116.21 Std. H.C. cor Meridian & 1st.  
LAT. 4., DIST. A., S.S. No. 21



RM. 102.35 "K" in Kensler 1st. of W. N., N.W. Water & Clark  
LAT. 13., DIST. C., S.S. No. 20.

LAT. 14., DIST. C. S.S. No. 20



LAT. 'B' - S.W.S. No. 5