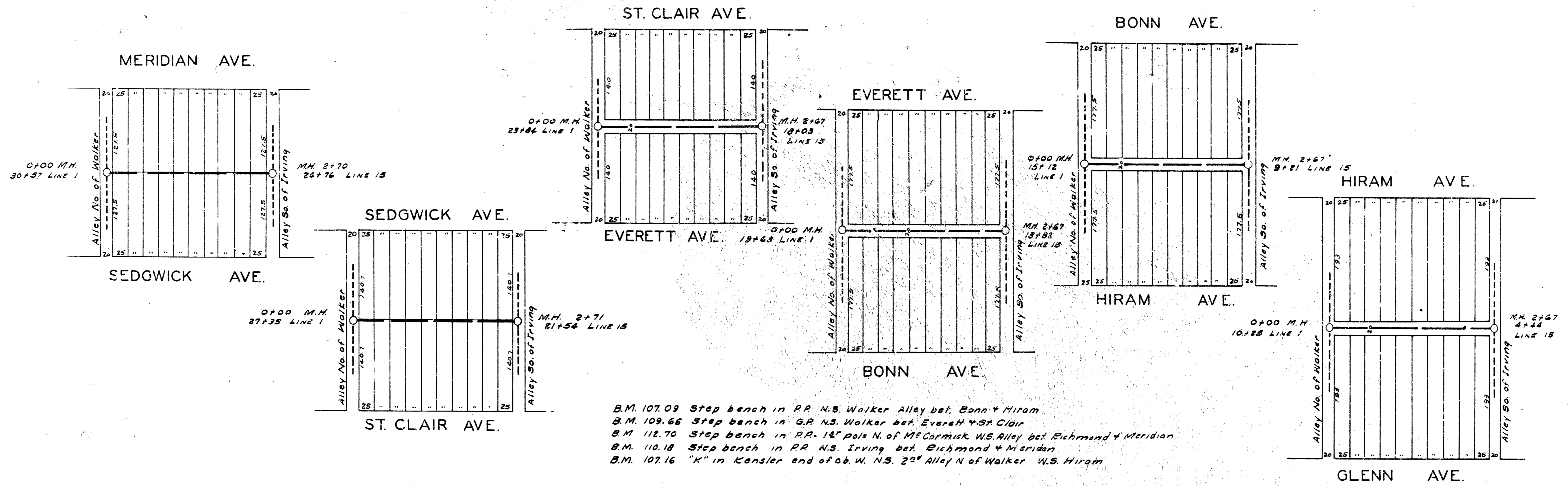
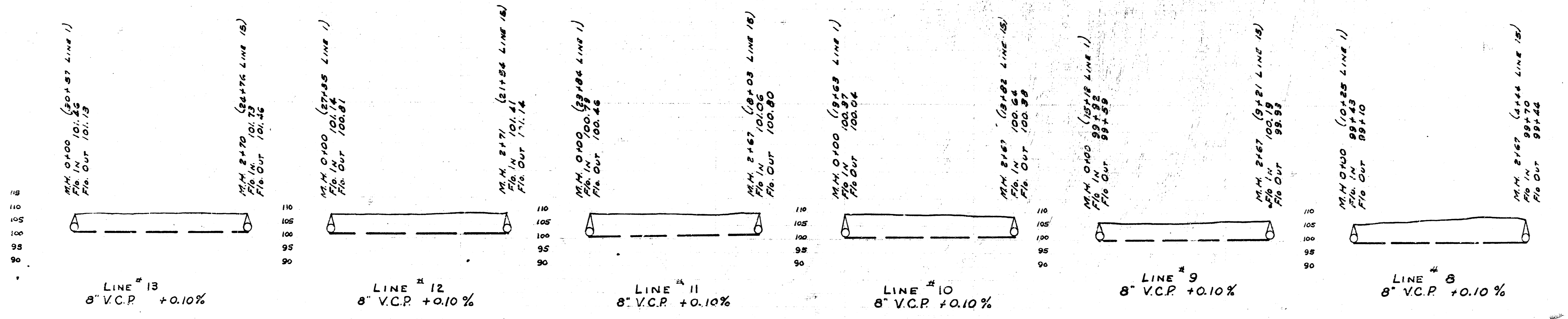


N

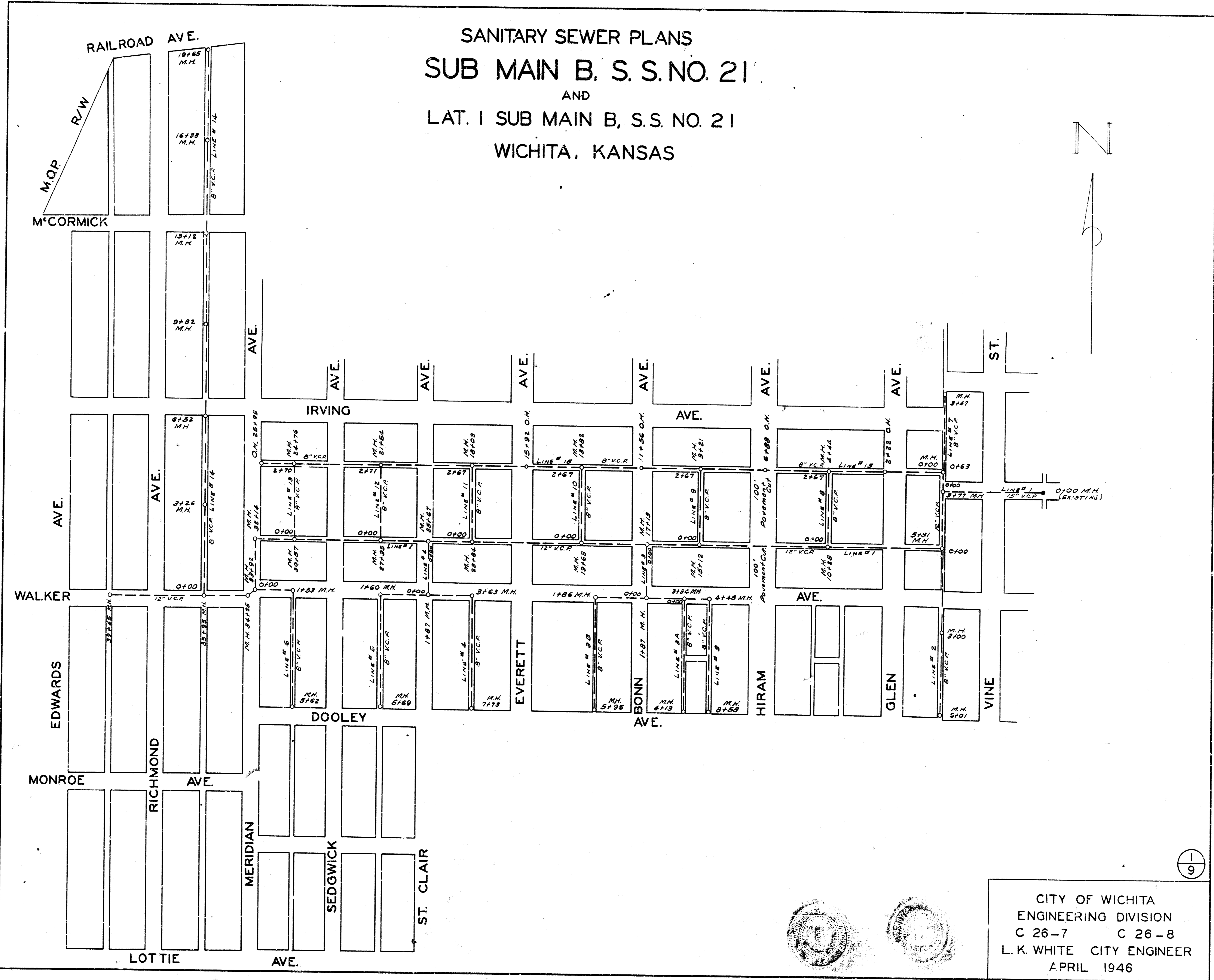
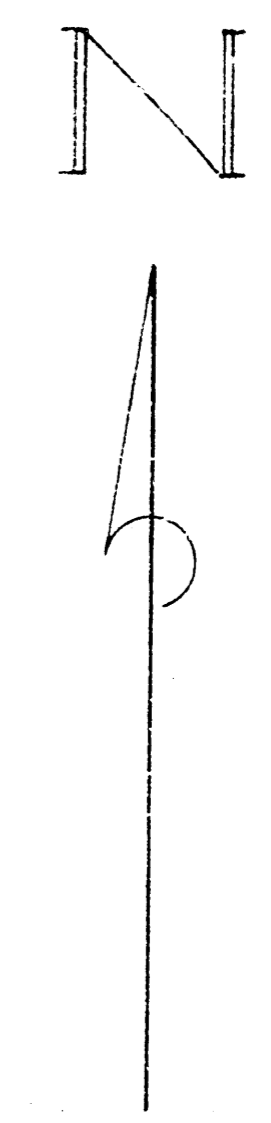


B.M. 107.09 Step bench in P.R. N.S. Walker Alley bet. Bonn & Hiram  
 B.M. 109.66 Step bench in "G.R. N.S. Walker bet. Everett & St. Clair  
 B.M. 112.70 Step bench in "R.R. 13' pole N. of M.F. Carmick W.S. Alley bet. Richmond & Meridian  
 B.M. 110.18 Step bench in P.R. N.S. Irving bet. Richmond & Meridian  
 B.M. 107.16 "K" in Kensler end of ab. W. N.S. 22' Alley N. of Walker W.S. Hiram



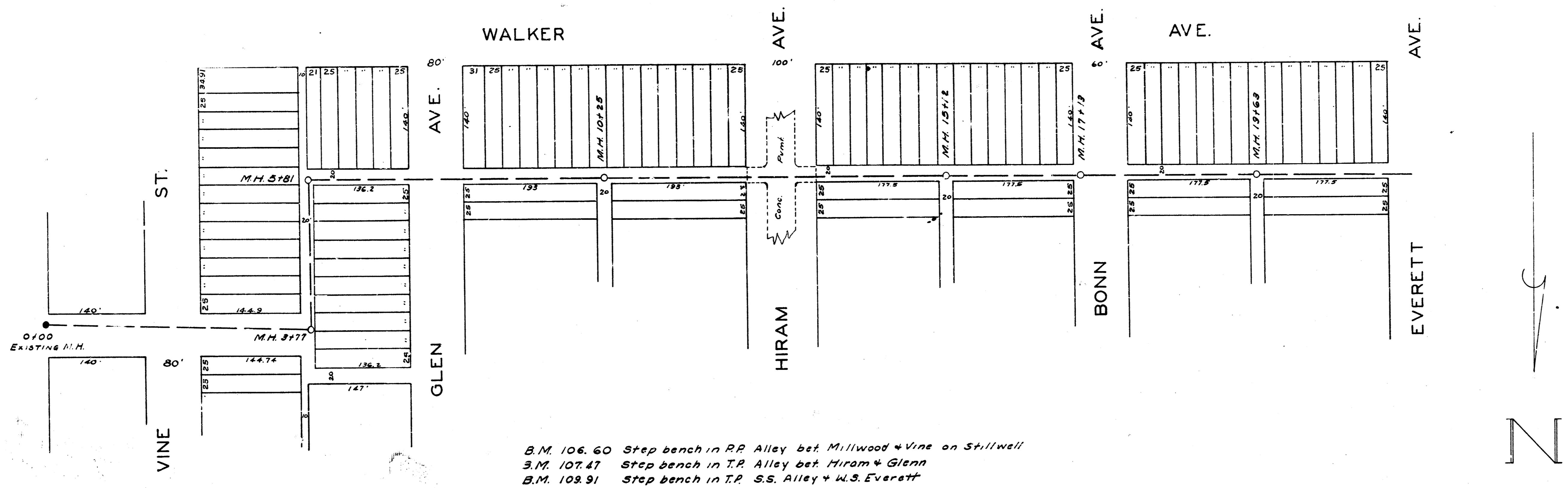
Submain R, 35. No. 21

SANITARY SEWER PLANS  
 SUB MAIN B, S. S. NO. 21  
 AND  
 LAT. I SUB MAIN B, S. S. NO. 21  
 WICHITA, KANSAS

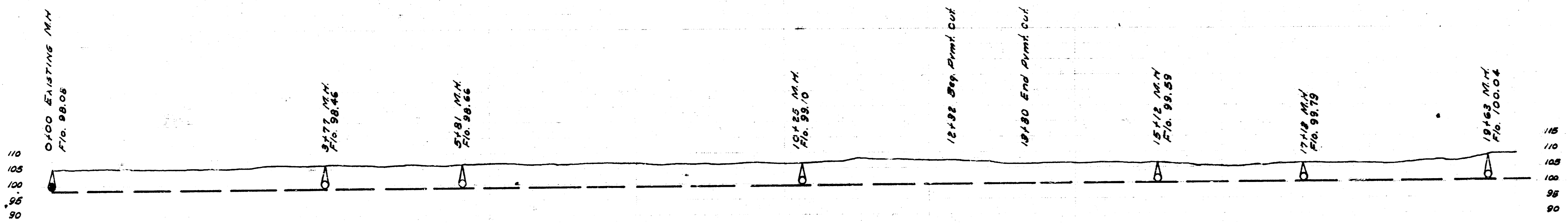


CITY OF WICHITA  
 ENGINEERING DIVISION  
 C 26-7      C 26-8  
 L. K. WHITE CITY ENGINEER  
 APRIL 1946

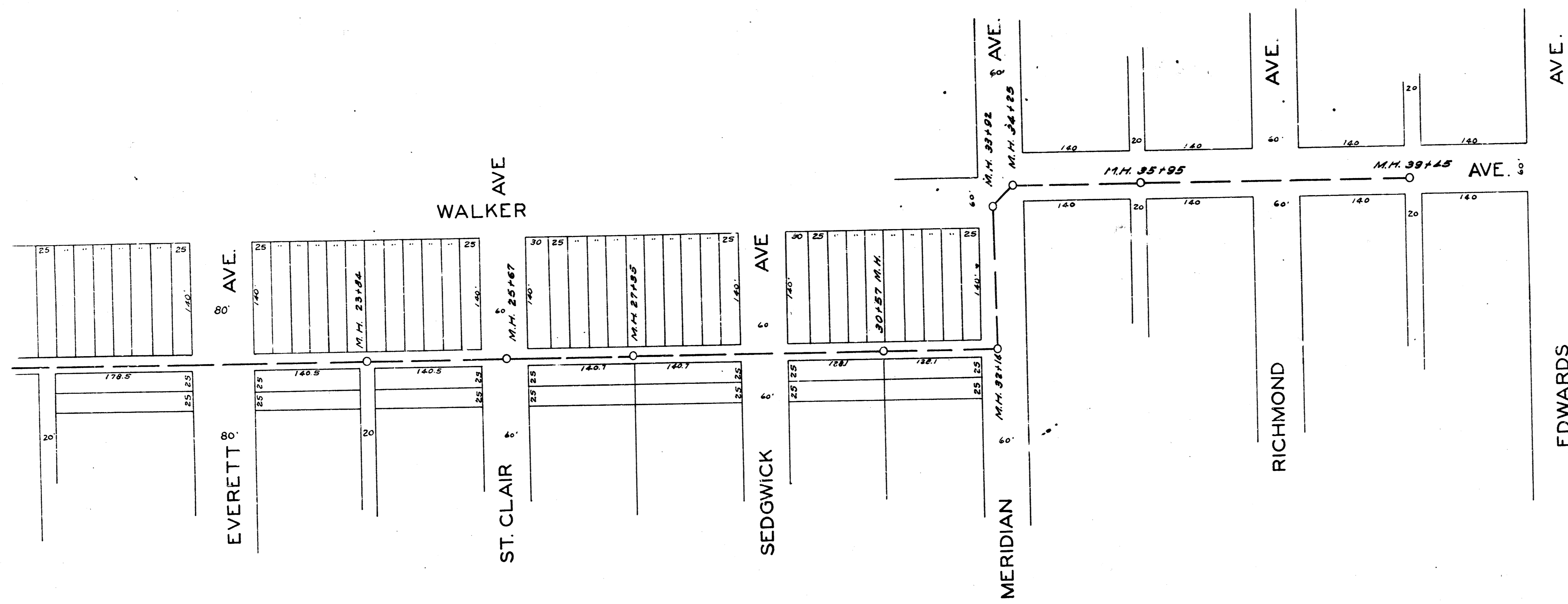




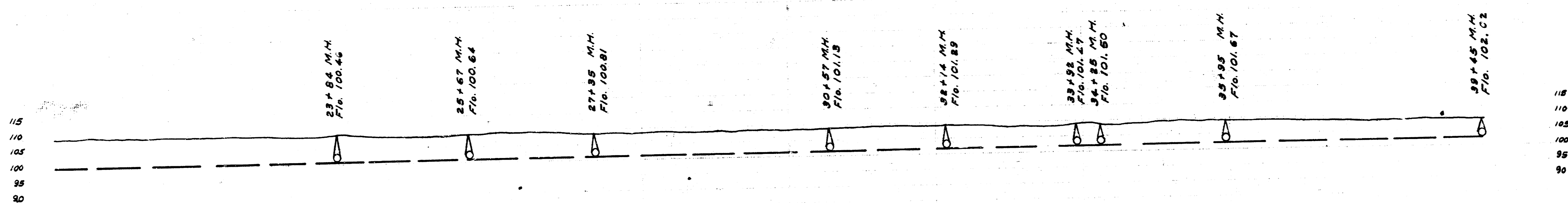
B.M. 106.60 Step bench in RR Alley bet Millwood + Vine on Stillwell  
 B.M. 107.47 Step bench in T.R. Alley bet Hiram + Glenn  
 B.M. 109.91 Step bench in T.R. S.S. Alley + W.S. Everett



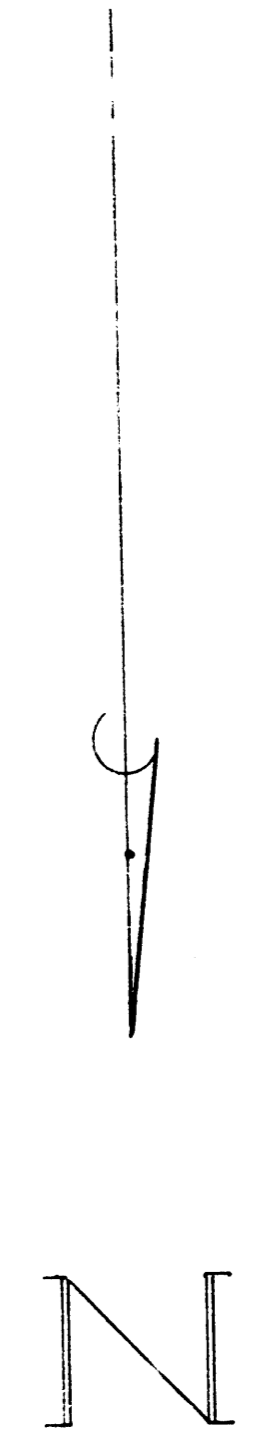
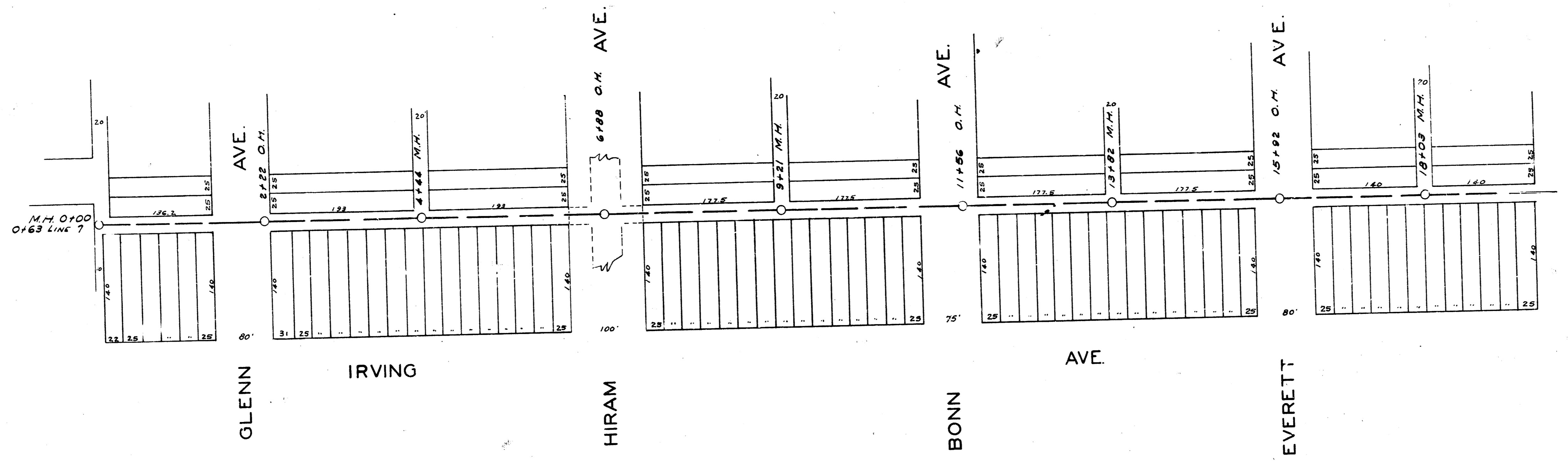
LINE # 1  
 12" V.C.P. +0.10%



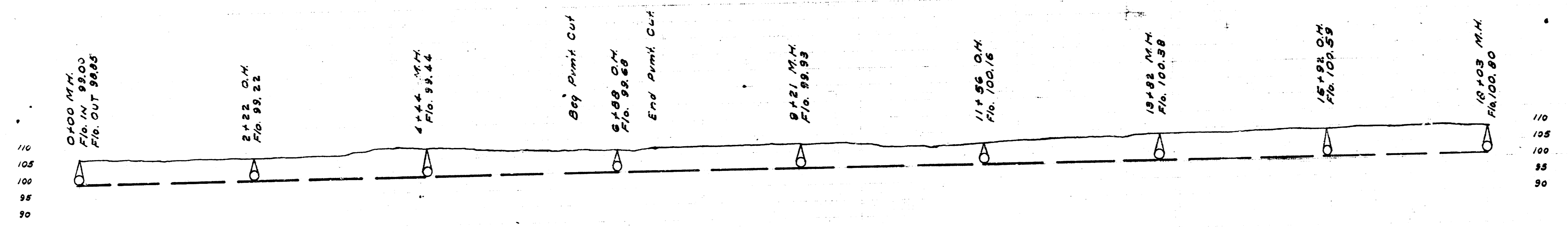
B.M. 108.77 "X" on bk of wk. on S.S. of Alley E+W. E.S. of Meridian  
 B.M. 110.38 2x2 hub N.W. cor Walker & Meridian  
 B.M. 109.50 Step bench in T.R. S.S. Walker bet Edwards & Richmond



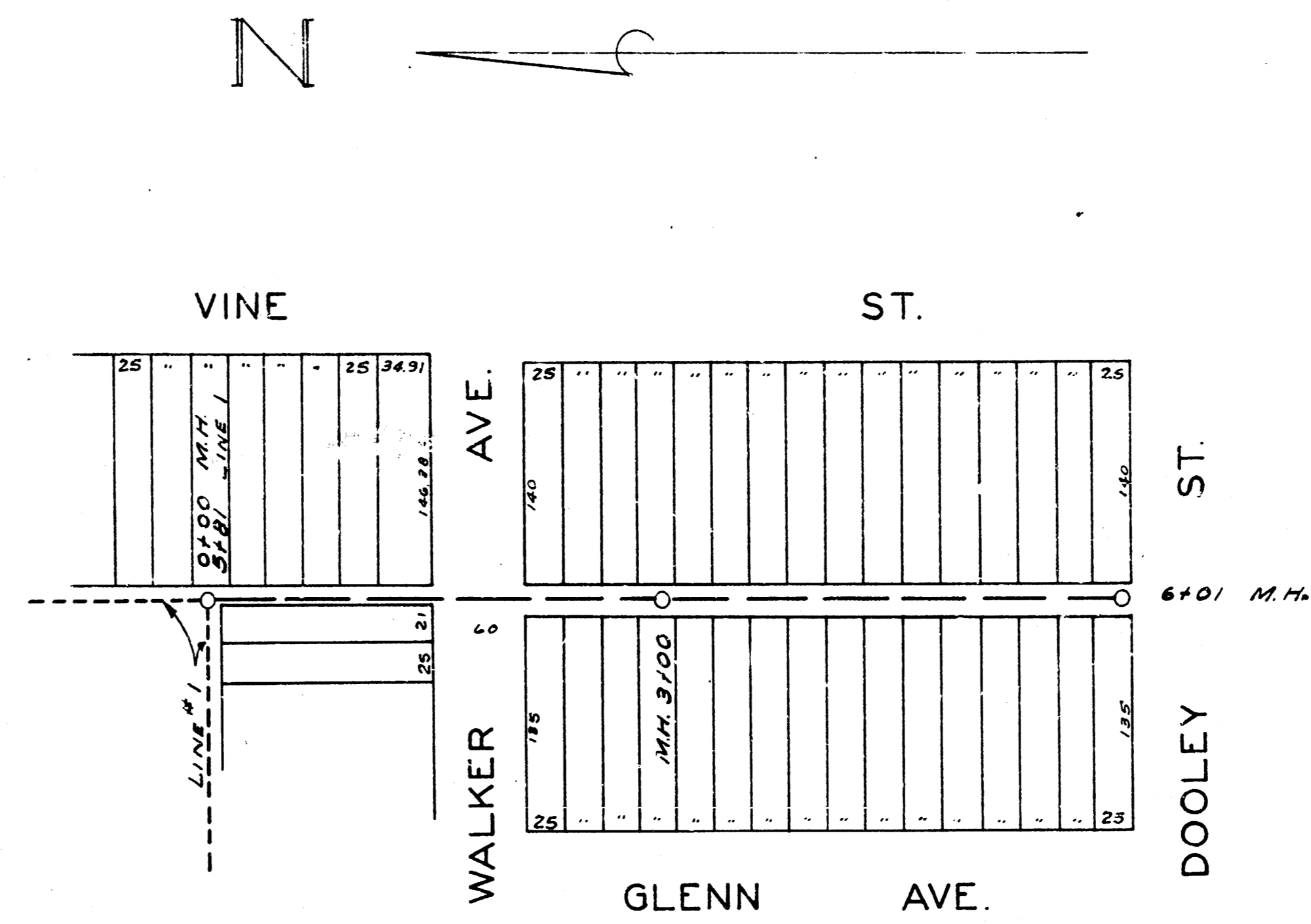
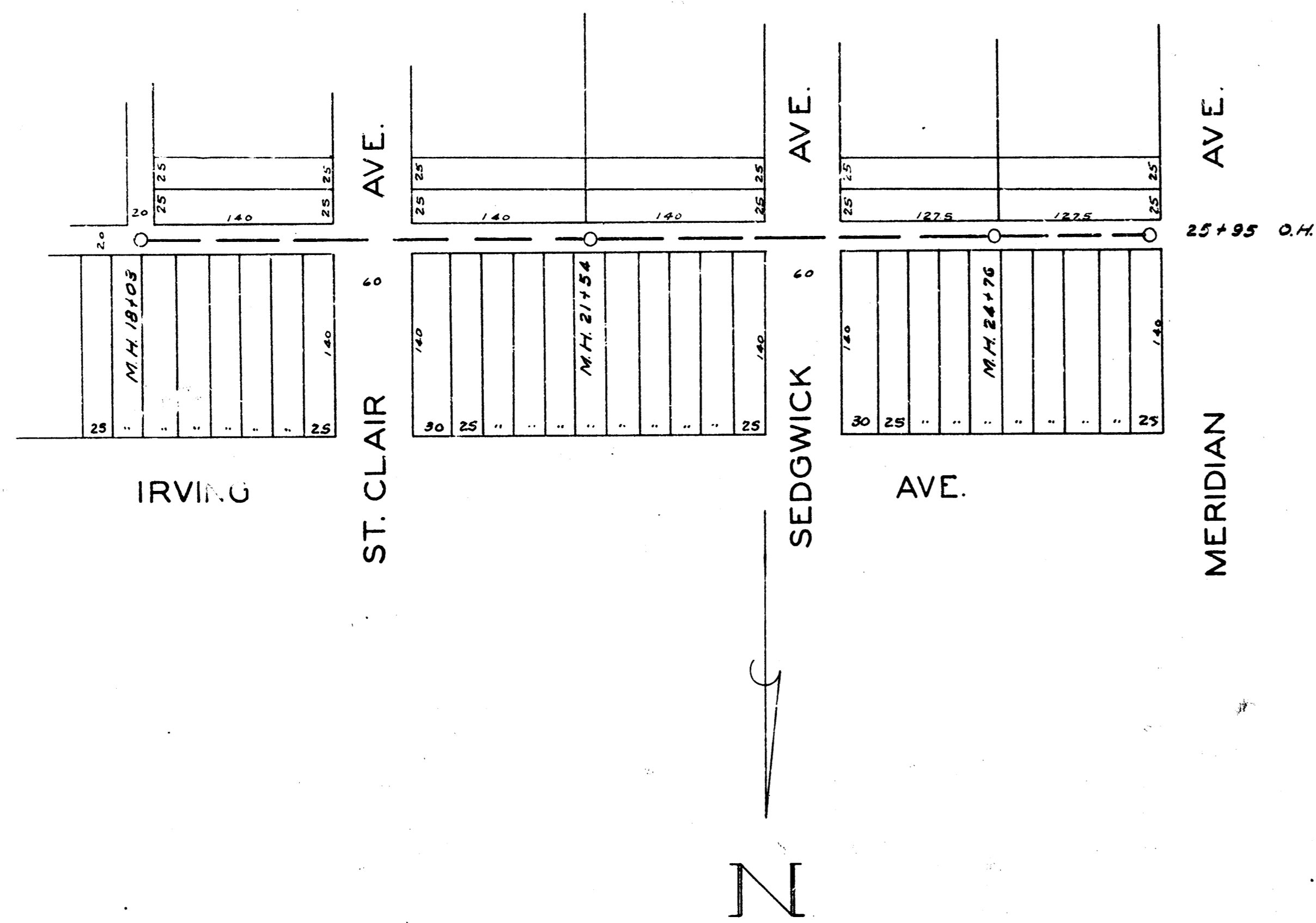
LINE #1  
 12" V.C.P. + 0.10 %



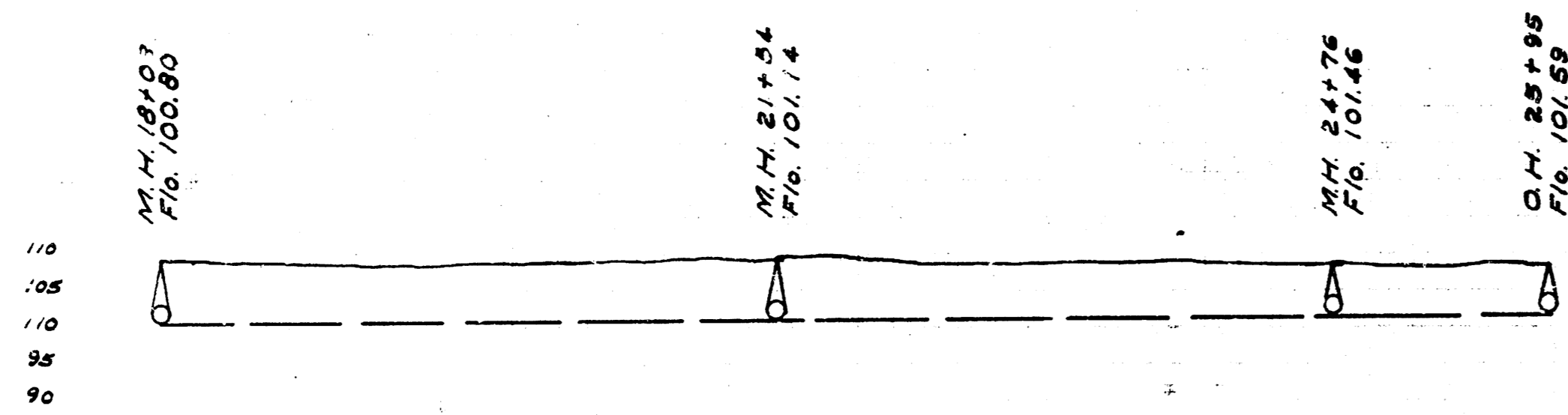
BM. 107.09 Step bench in RR. N.S. Walker in E. Alley So. bet. Bonny & Hiram.  
 BM. 109.66 Step bench in G.R. N.S. Walker bet. Everett & St. Clair.



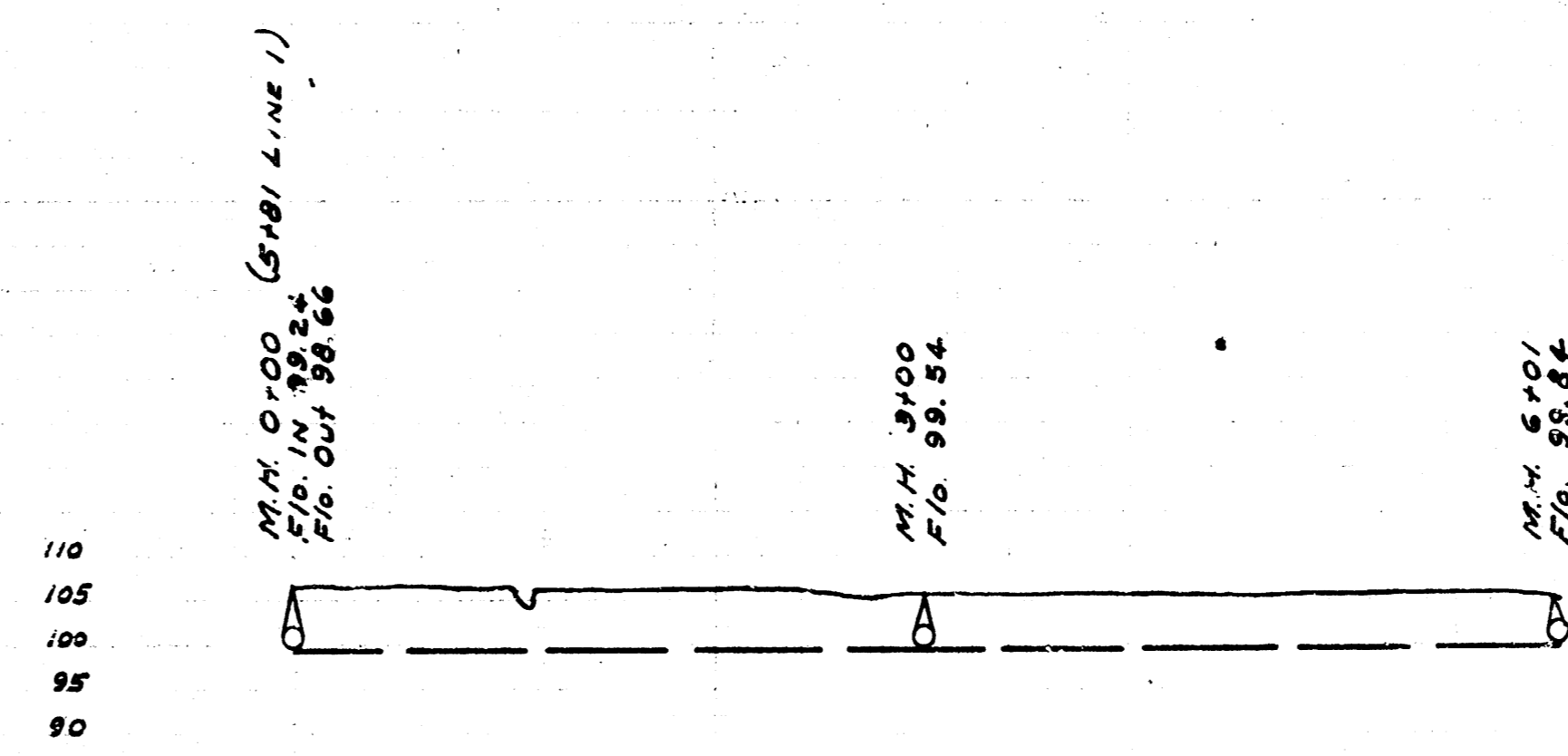
LINE 15  
 8" V.C.P. 0.10%



B.M. 106.60 Step bench in RR Alley bet. Millwood + Vine on Stillwell

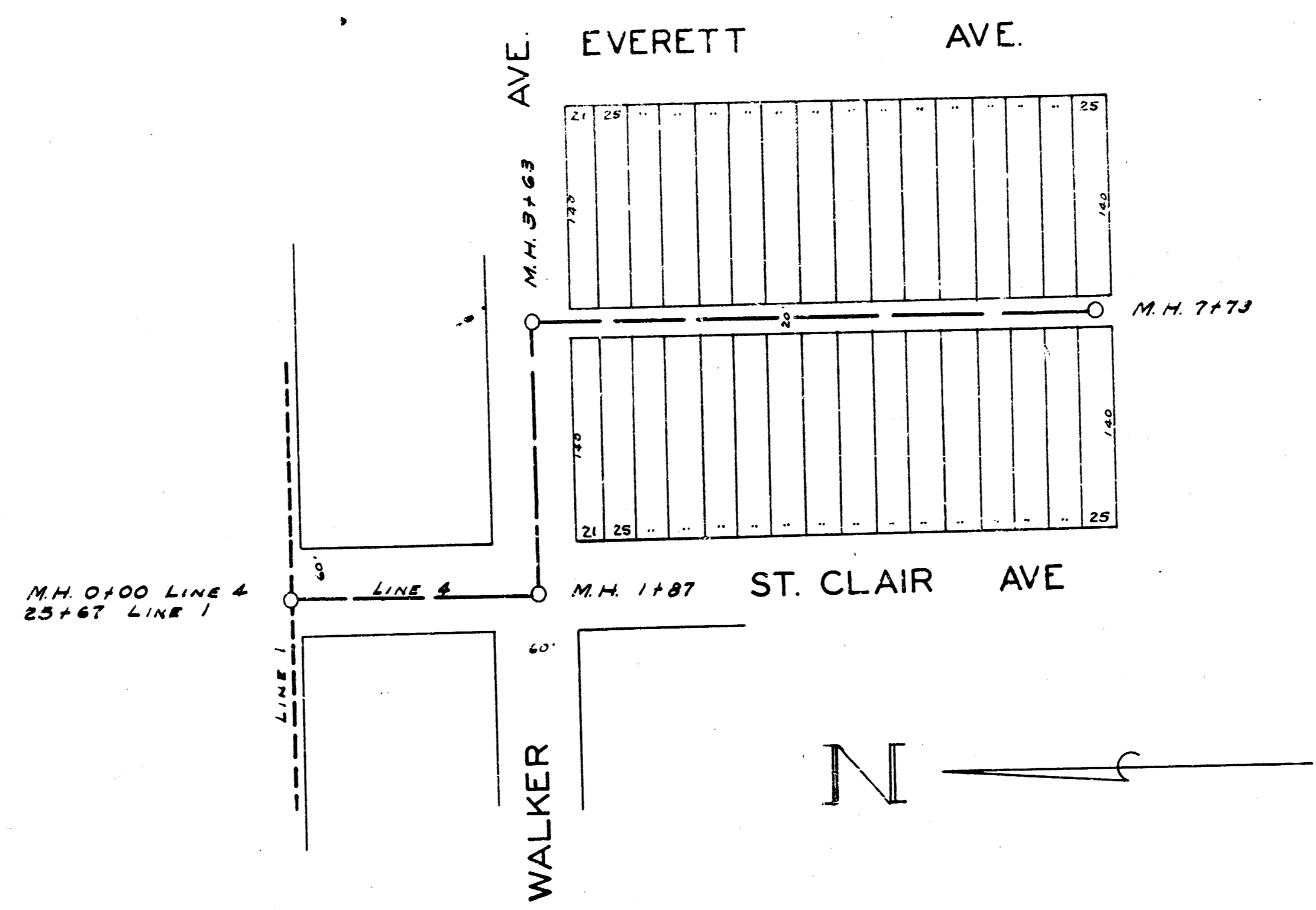
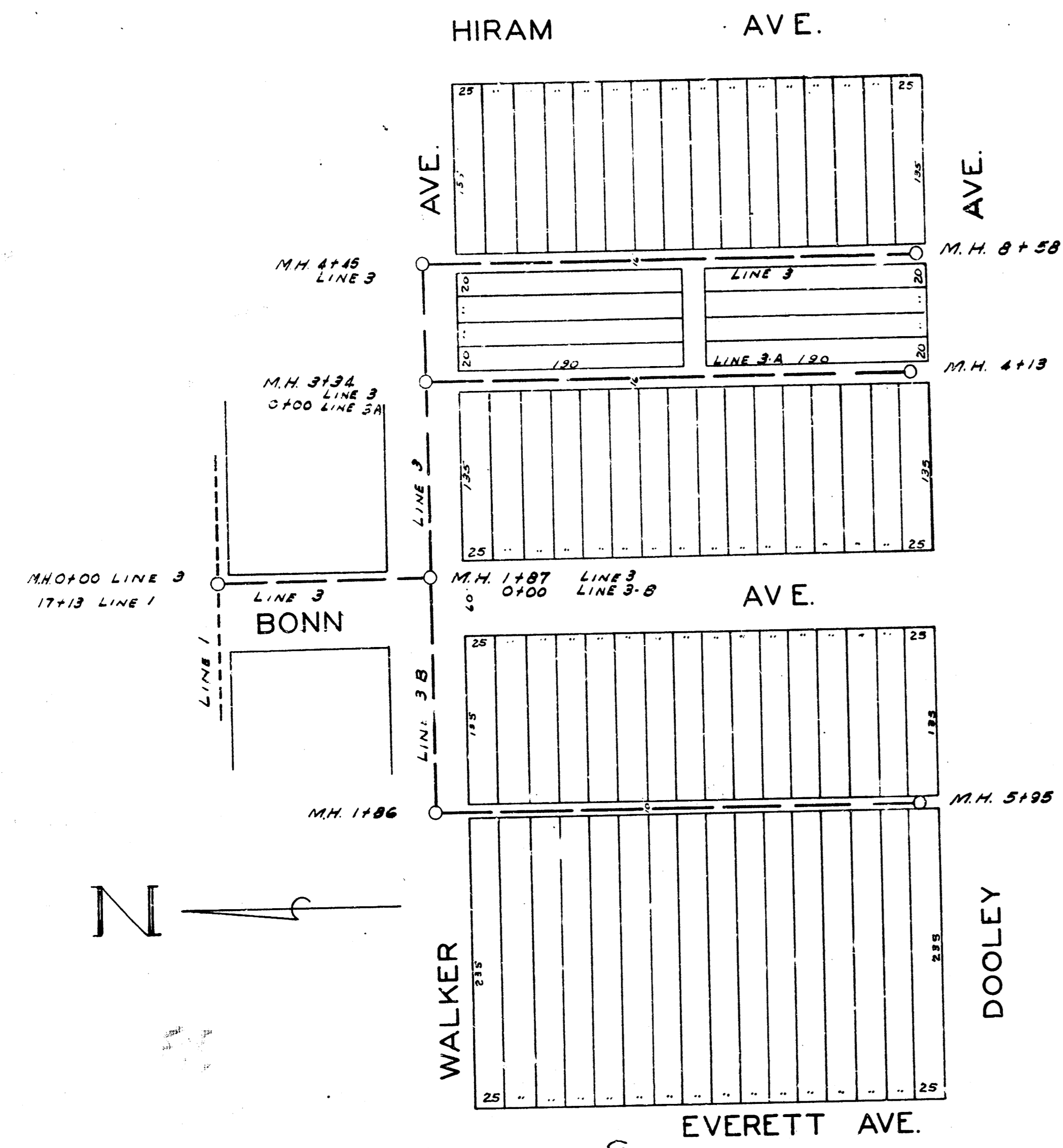


LINE # 15  
8" V.C.P. +0.10%

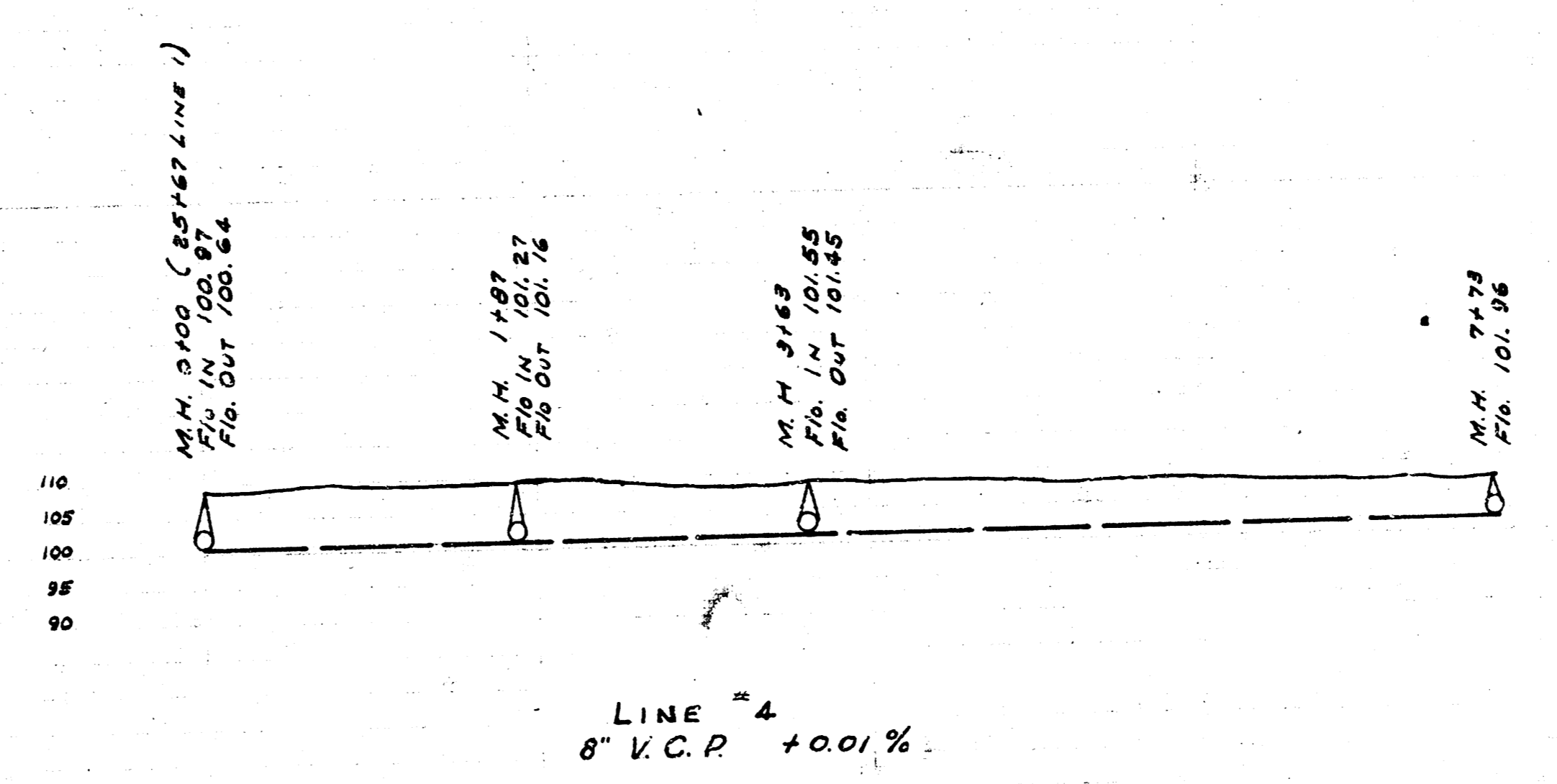
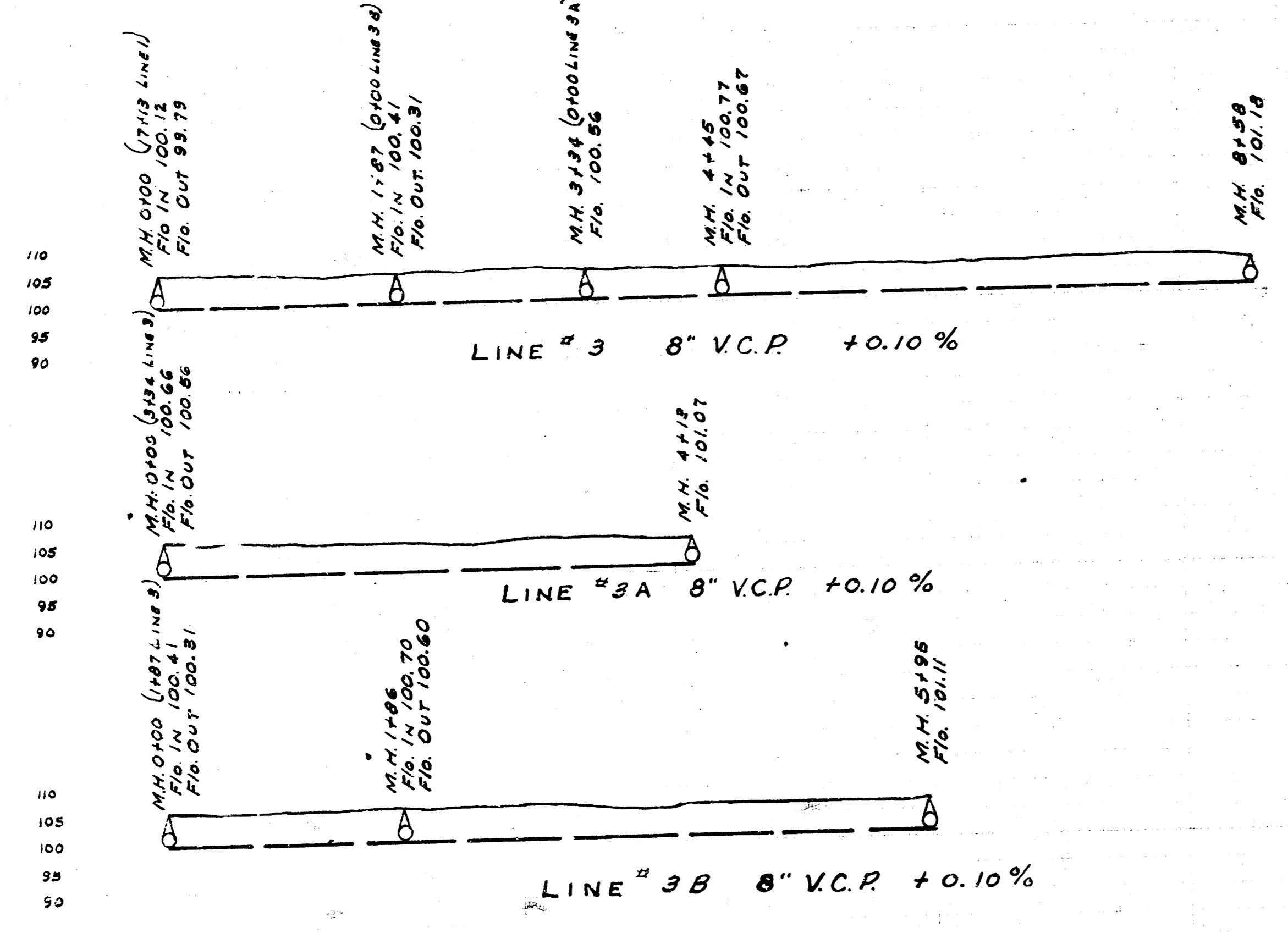


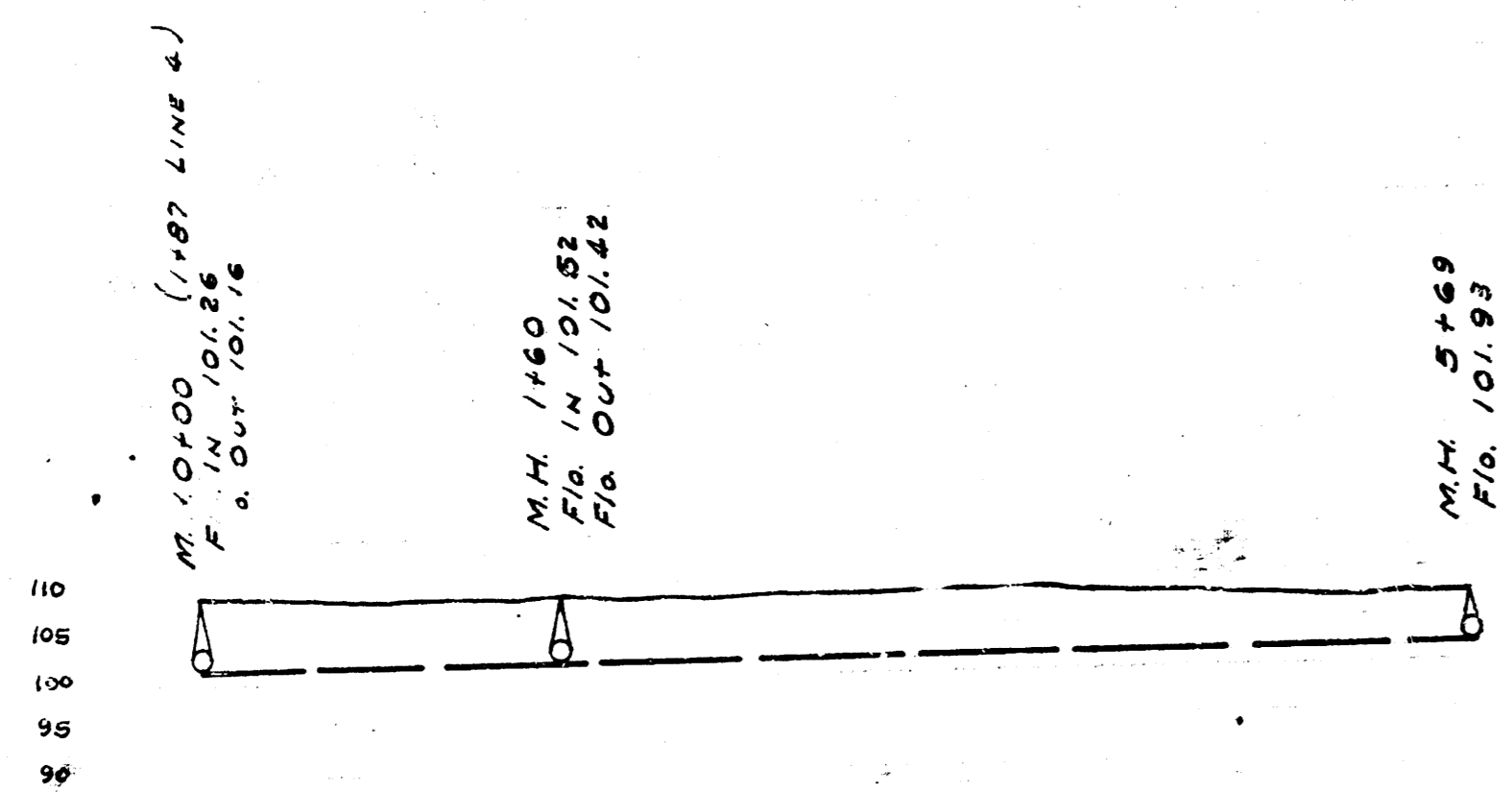
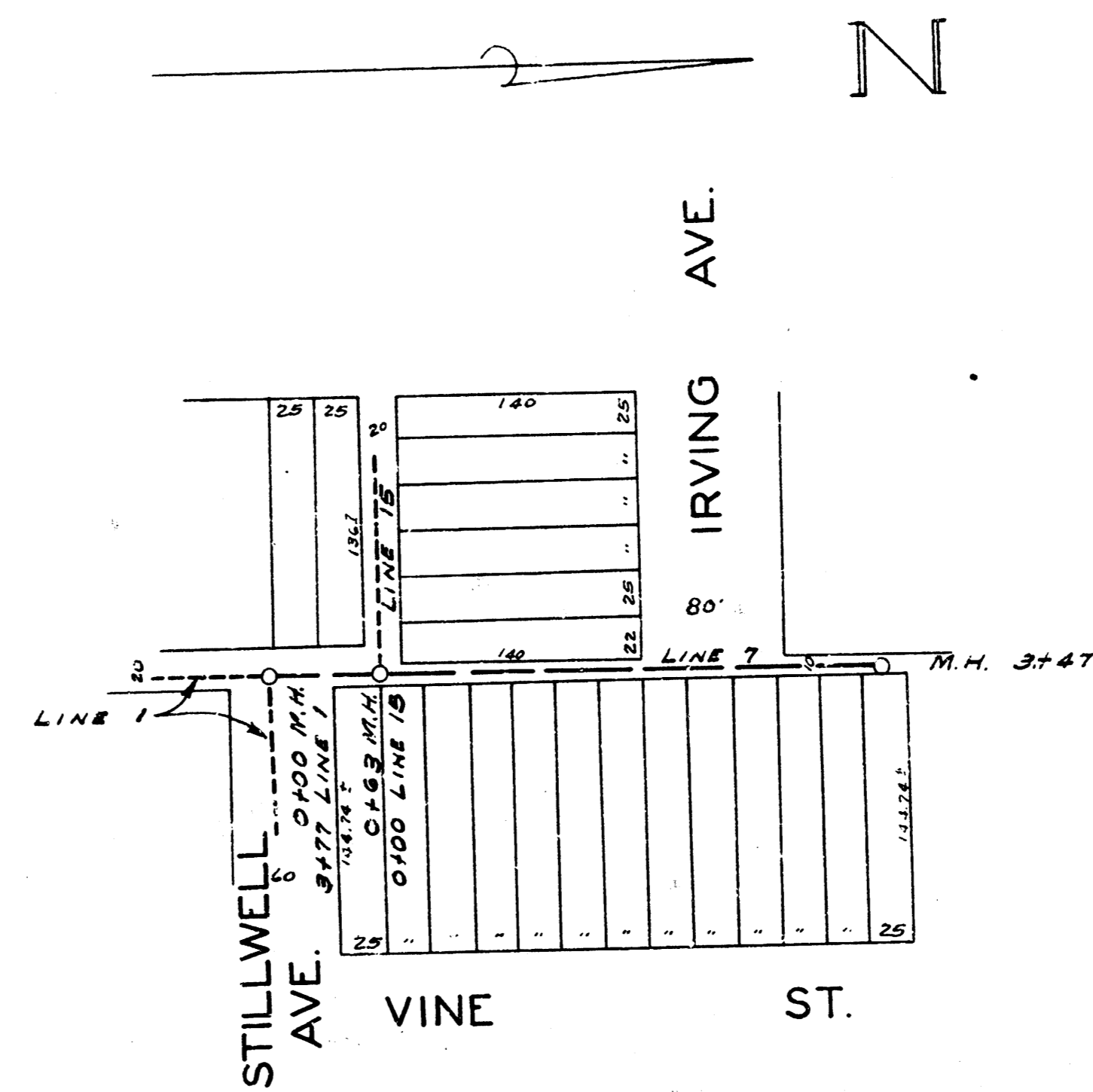
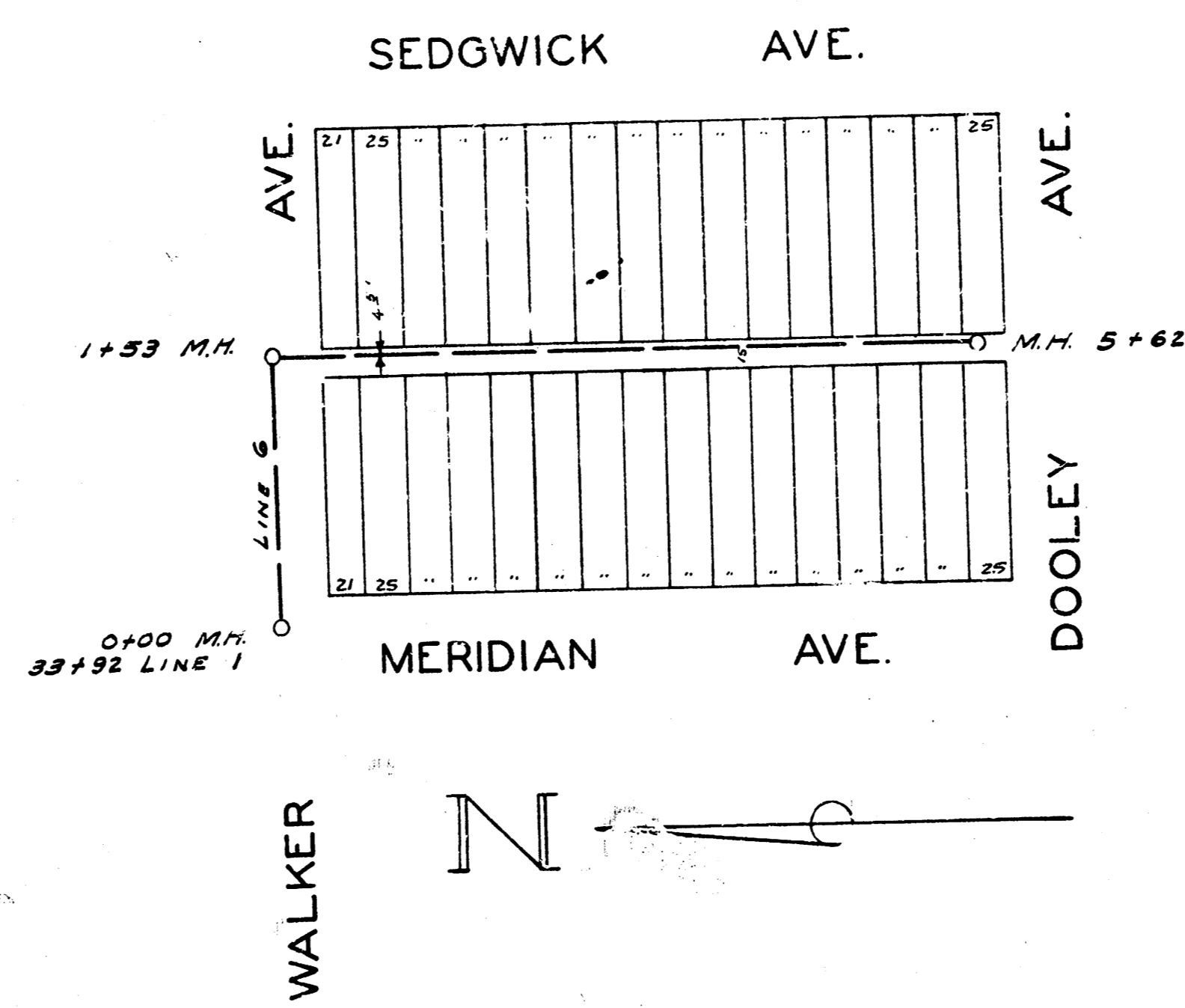
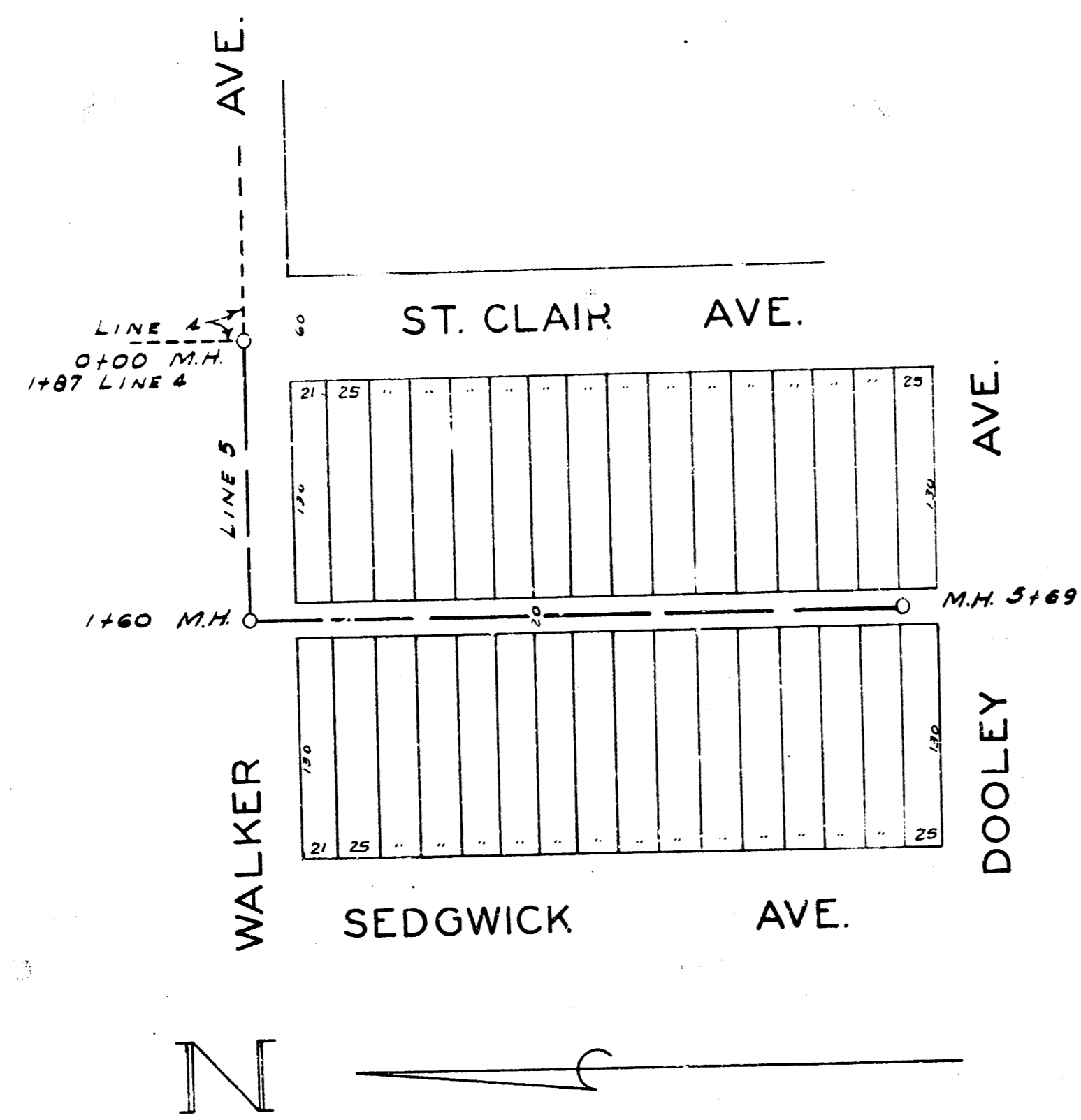
LINE # 2  
8" V.C.P. +0.10%

18 20 22 24 26 0 2 4 6

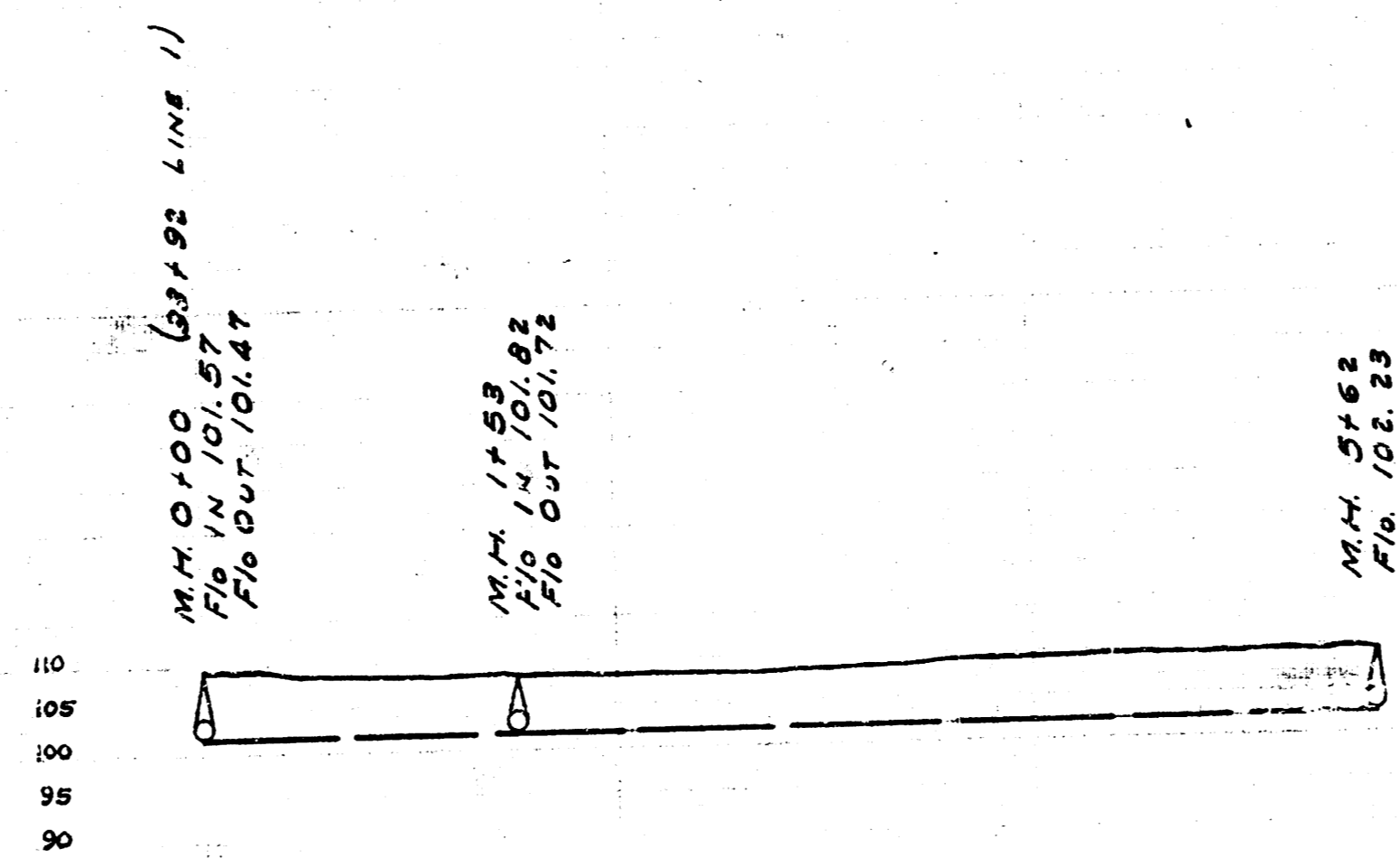


B.M. 109.66 Step bench in G.R. N.S. Walker bet Everett + St. Clair  
 B.M. 107.09 Step bench in R.R. N.S. Walker in E. Riley, So. Bet Bonn + Hiram

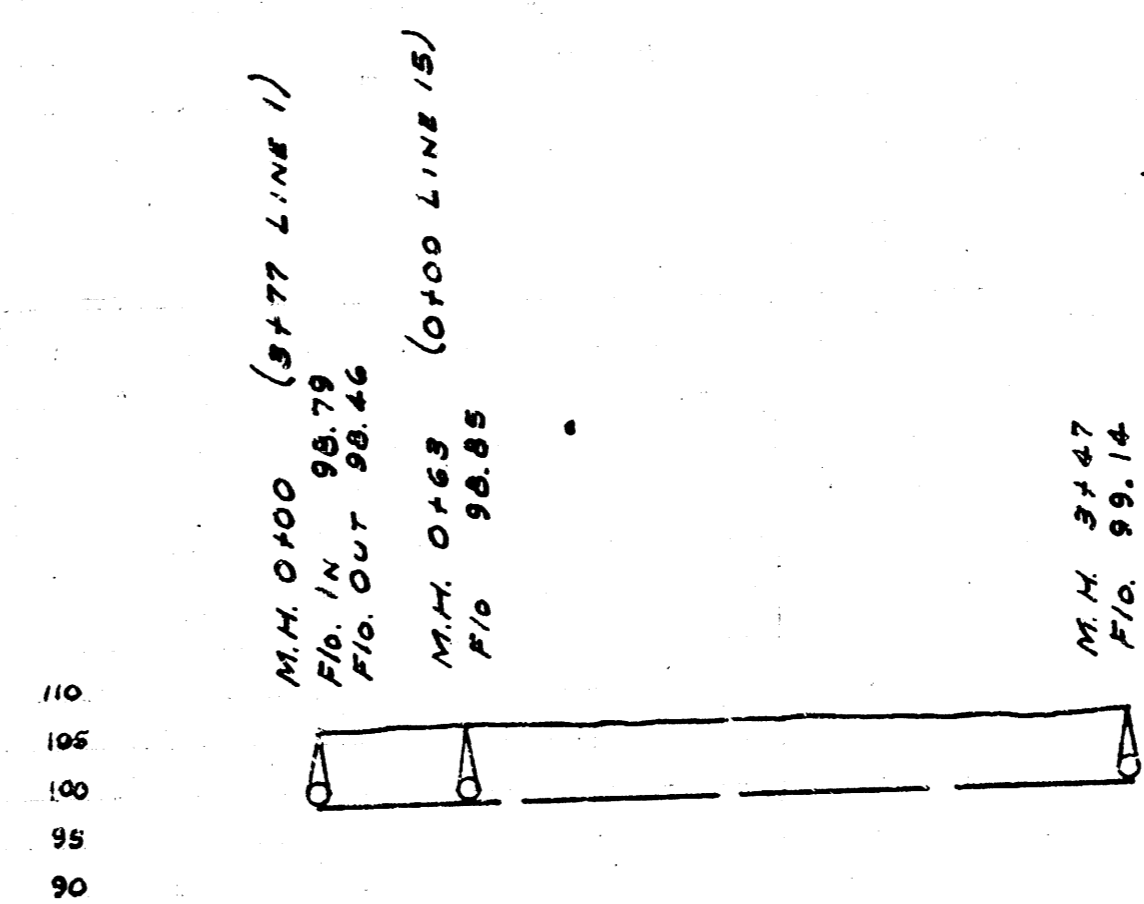




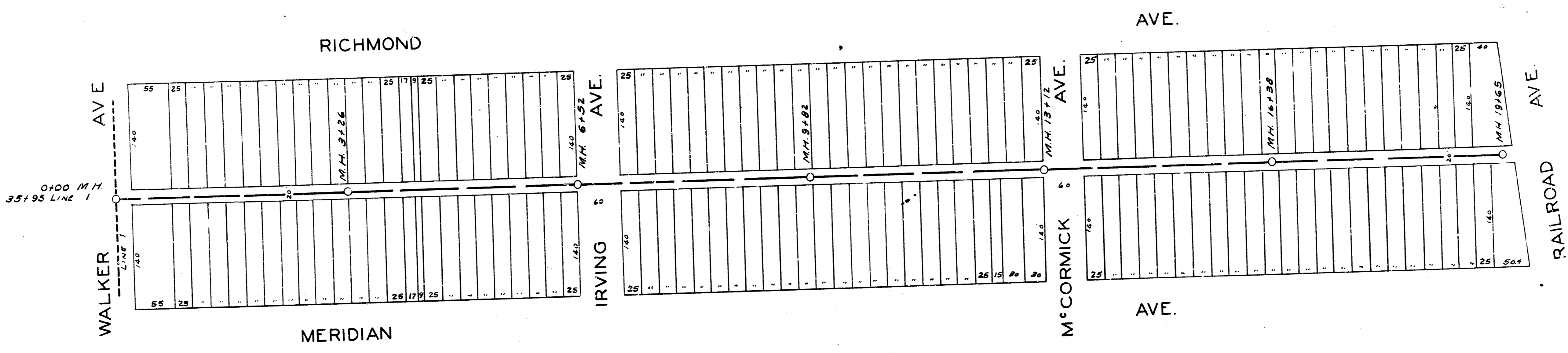
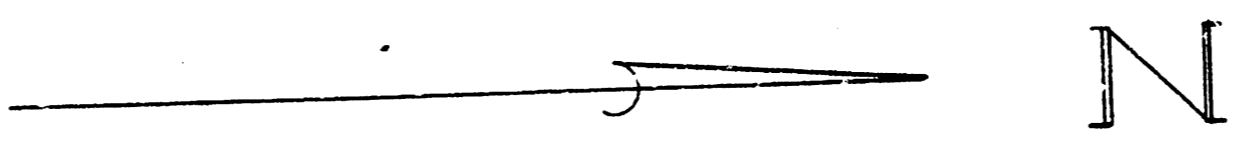
LINE # 5  
8" V.C.P. +0.10%



LINE # 6  
8" V.C.P. +0.10%



LINE # 7  
8" V.C.P. +0.10%



BM. 109.50 Step bench in T.P. SS. of Walker W. bet. Edwards & Richmond  
B.M. 108.85 Std. B.M. S.E. Cor.

