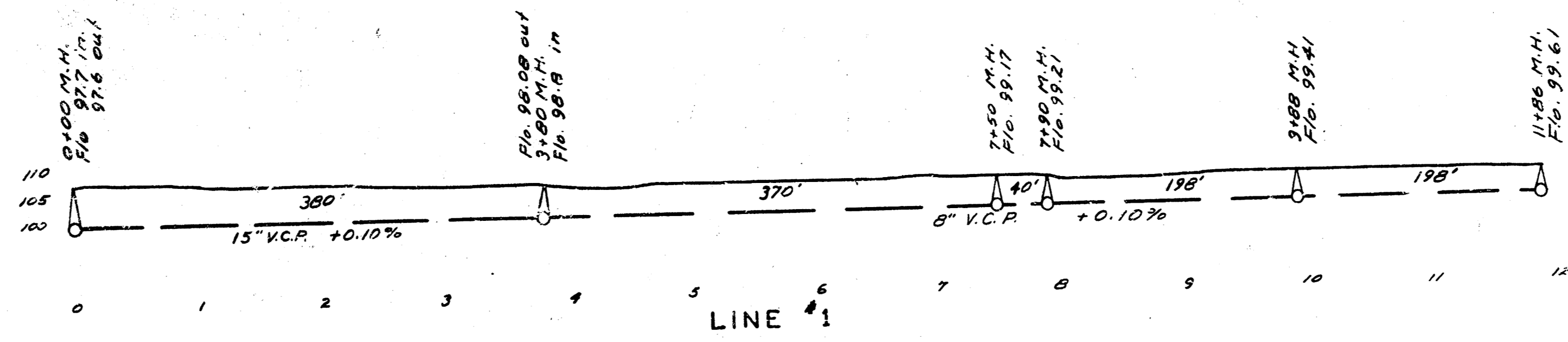
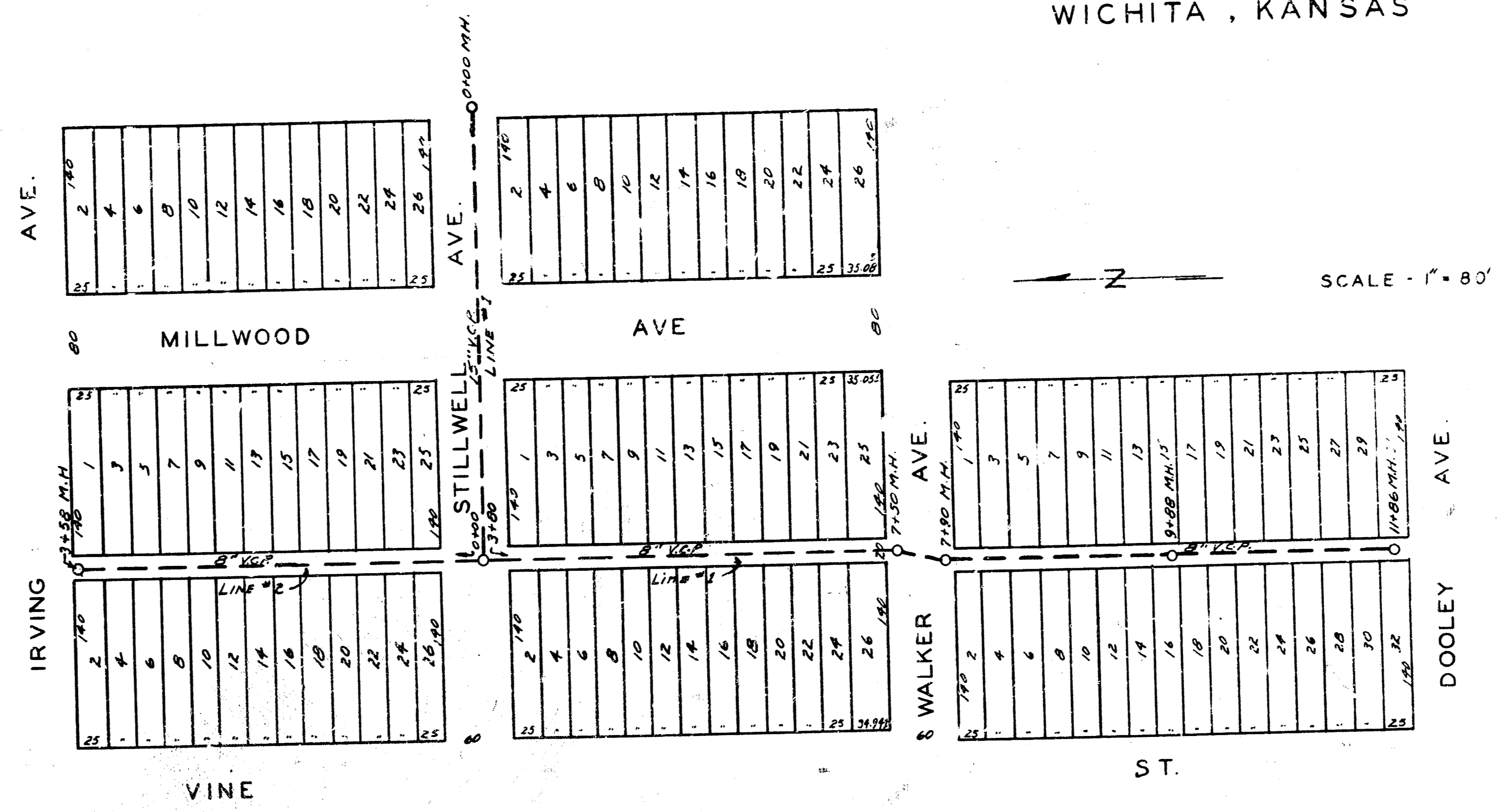
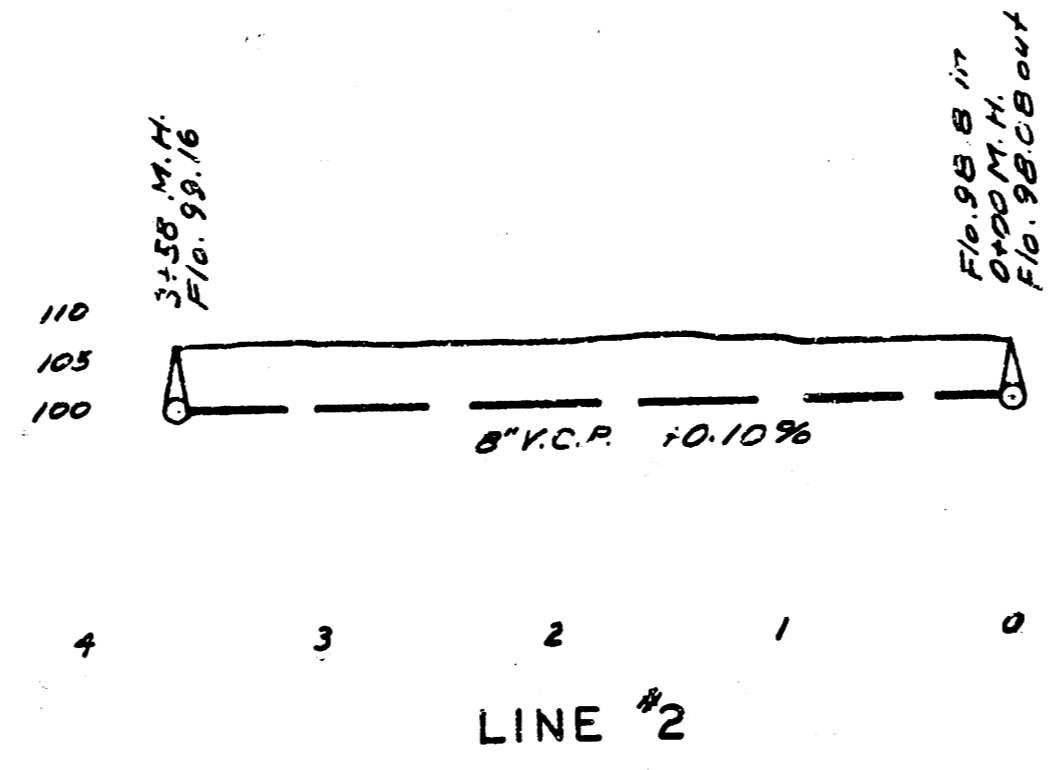


LAT. H. DIST. E, S.S. #21
 WICHITA, KANSAS



- B.M. 106.78 "L" in Long ctr. of wt. No. NW Irving & Millwood
- B.M. 106.60 Step sp. in P.P.
- B.M. 108.08 Sp. bench in P.P. No. of Sta. 0+00 on line #1
- B.M. 106.08 10' Lt. Sta. 10+70 sp. bench in P.P.



ENGINEERING DEPARTMENT
 CITY OF WICHITA, KANSAS
 P.L. BROCKWAY-CITY ENGINEER
 B.E. SMITH ENGINEER OF DESIGN
 AUG. 1941 DRAWN BY W.S.R.