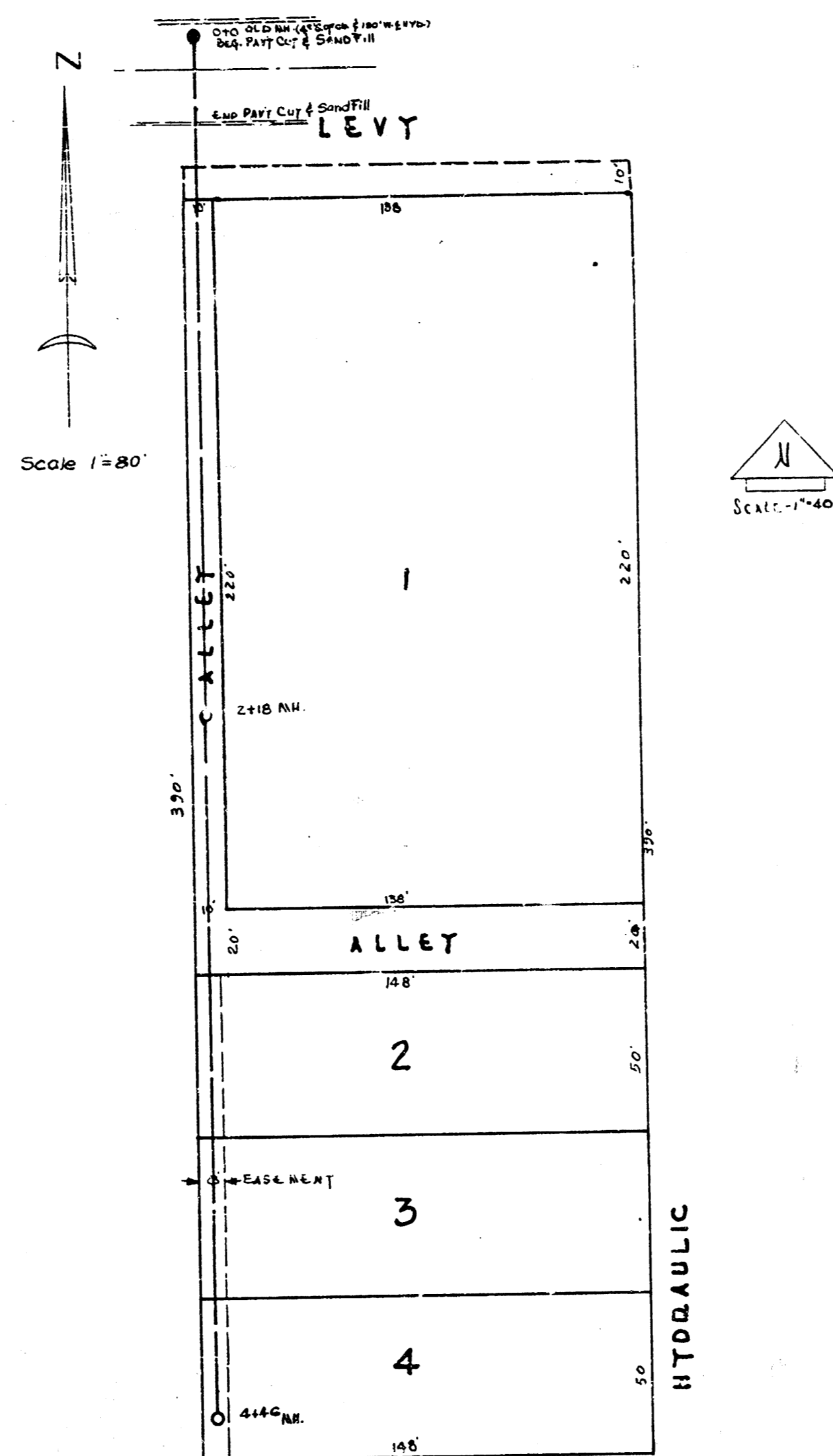
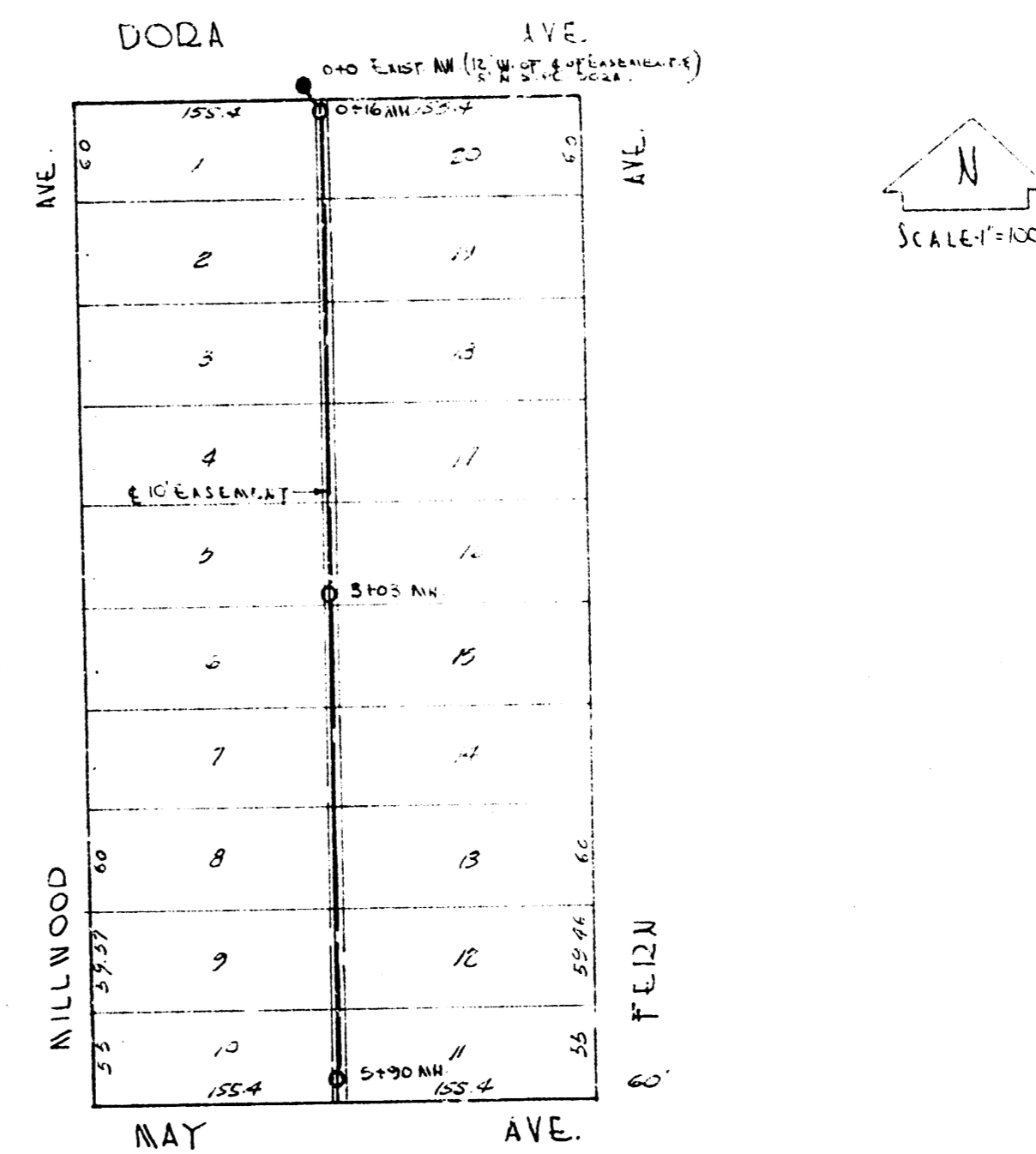


B.M. 123.36 S.E. cor. step House * 2002 North Minneapolis.



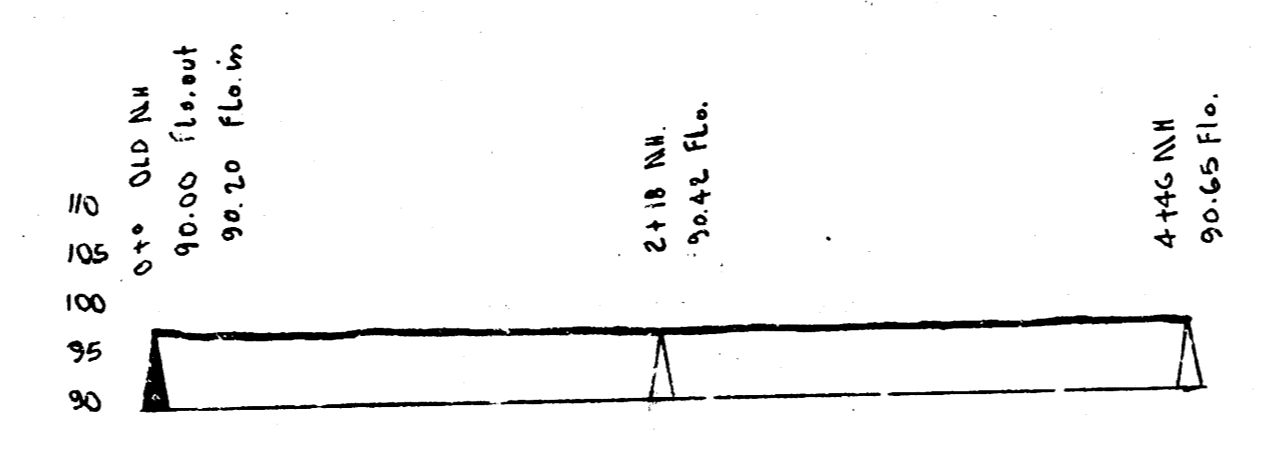
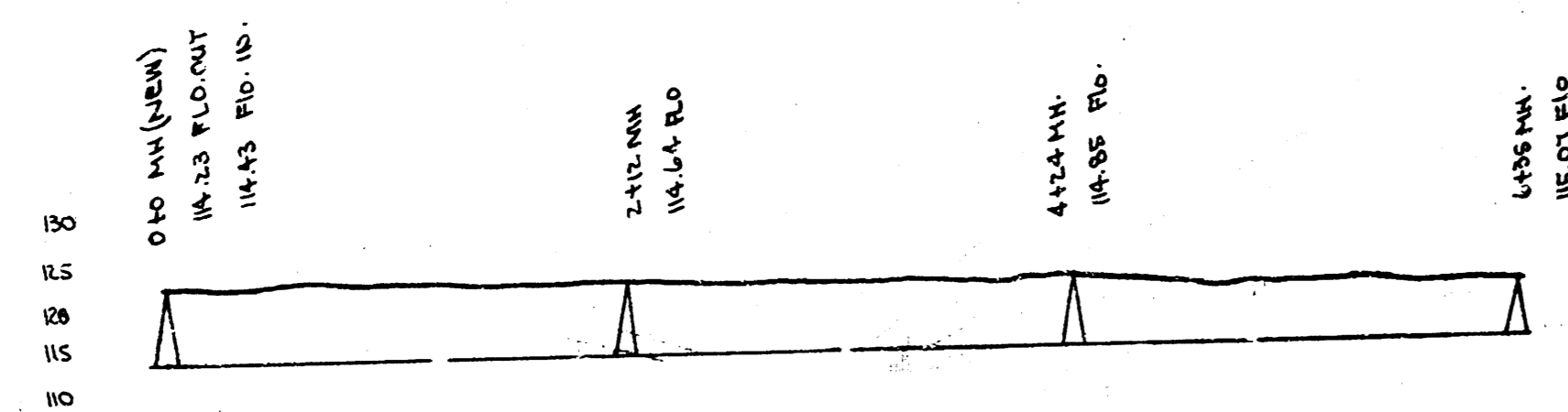
D.M. 100.28 "T" IN TROY FIRE HYD. SW. COR. HYD. & LEVY.

LAT. 13, DIST. B, SS* 20

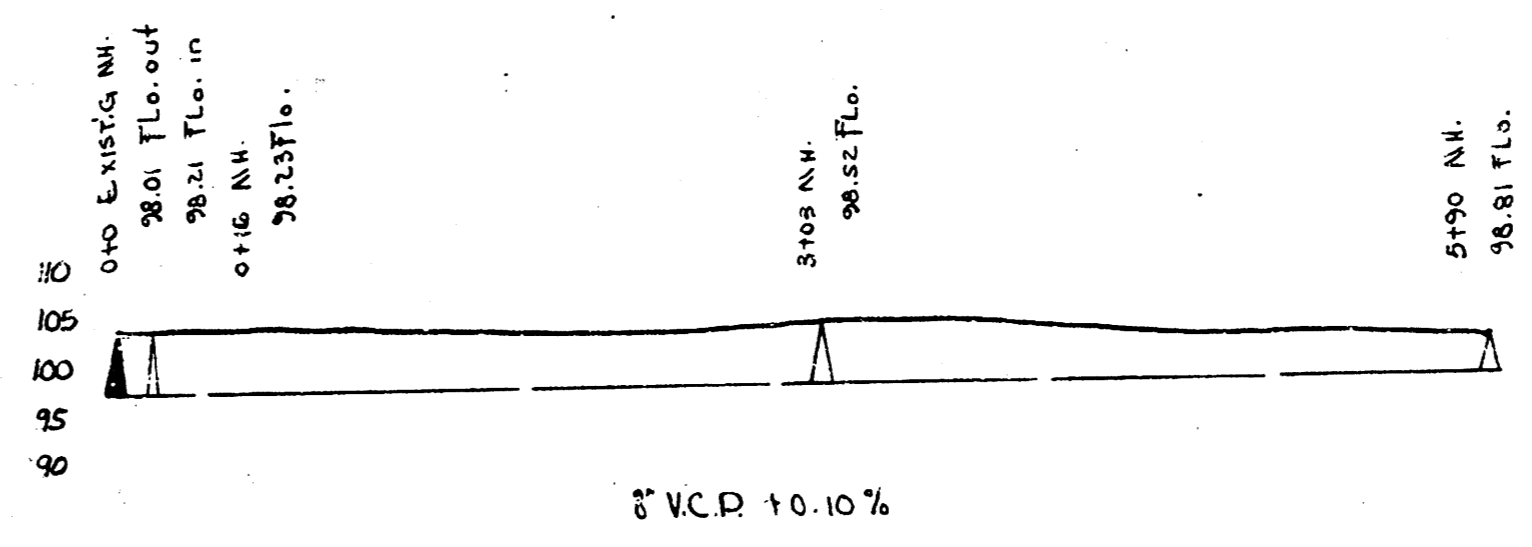


D.M. 103.47 1/4" IN GLOBE ON COR. N.S. DODD & L.L. MILLWOOD

LAT. 1, DIST. E, SS* 21



LAT. 13, DIST. B, SS* 20



LAT. 13, DIST. B, SS* 20
LAT. 1, DIST. E, SS* 21
CITY OF WICHITA, KANSAS
L.K. WHITE City Engineer
DATE 12-8-49 Pao. No.