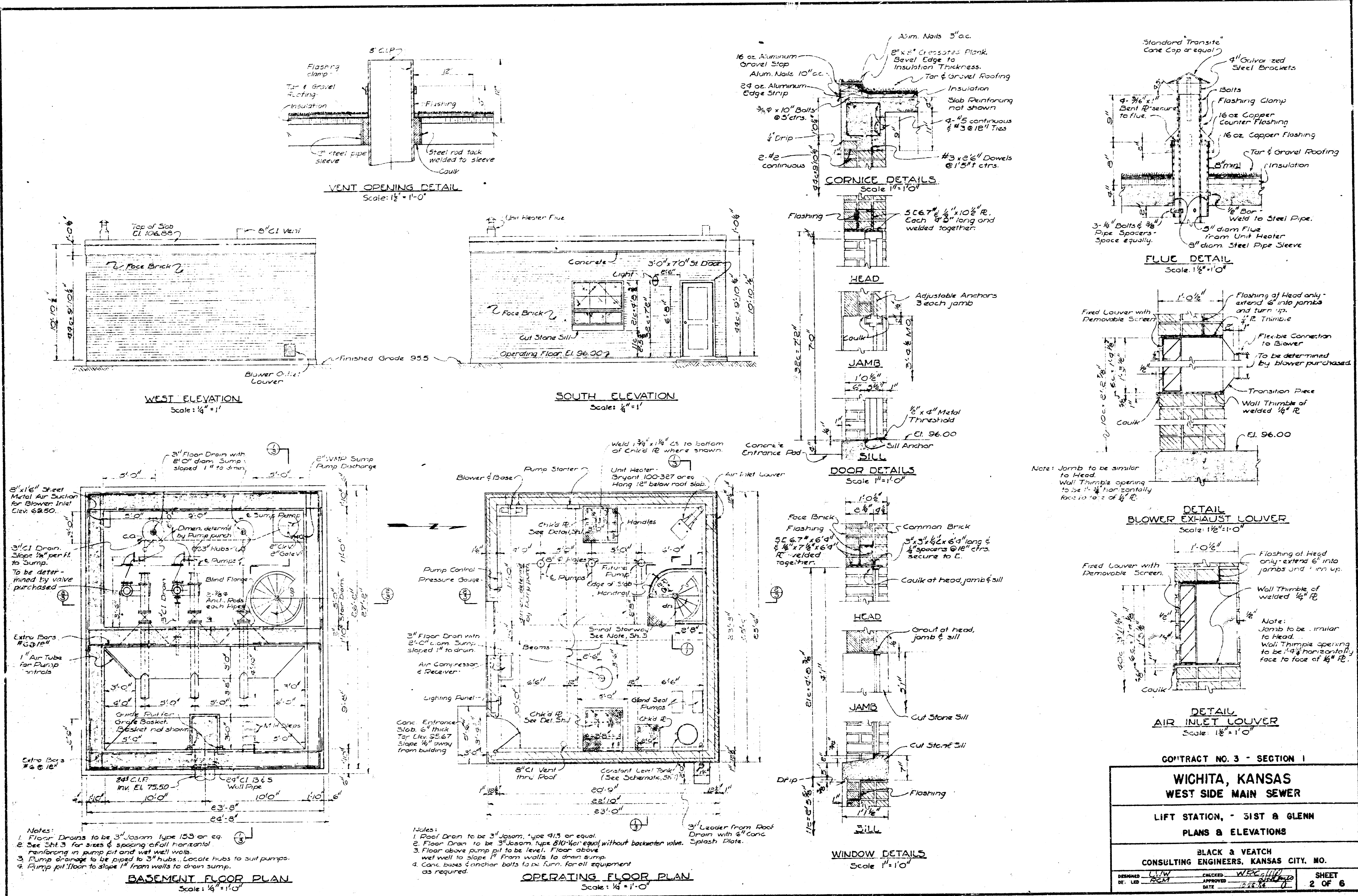
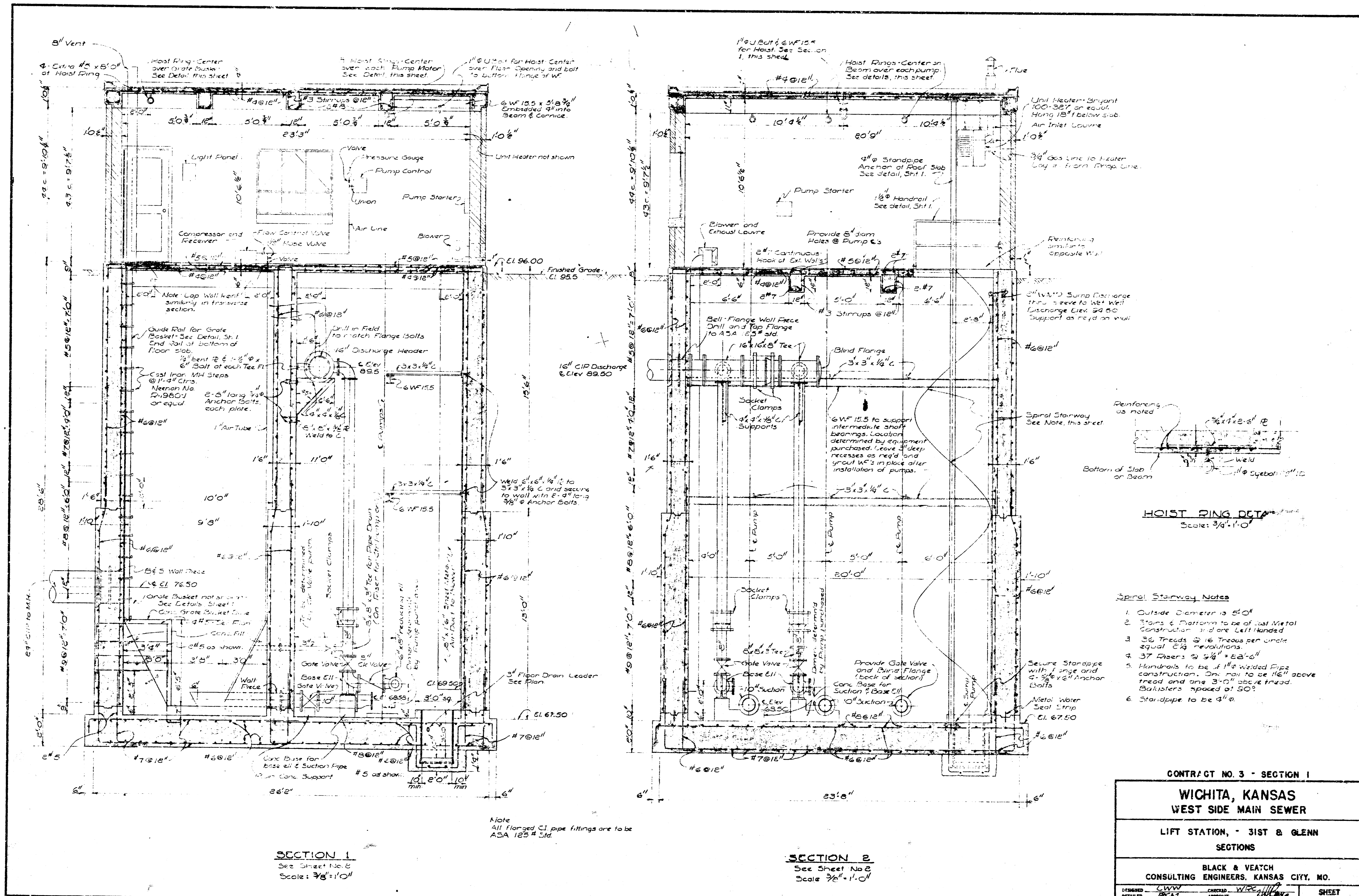


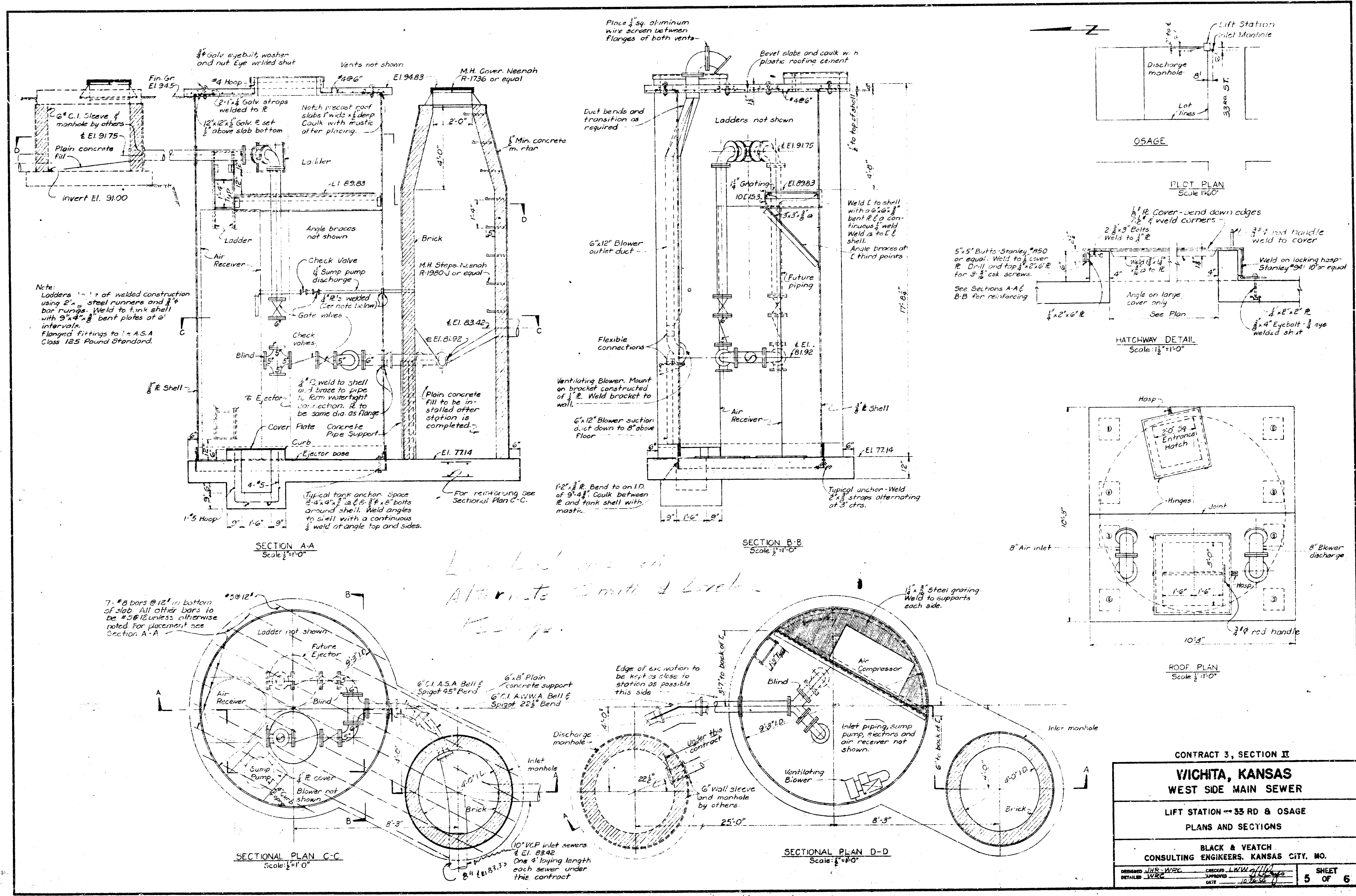
**PLANS FOR
SEWERAGE IMPROVEMENTS
WICHITA, KANSAS
WEST SIDE MAIN SEWER
LIFT STATIONS
CONTRACT 3**

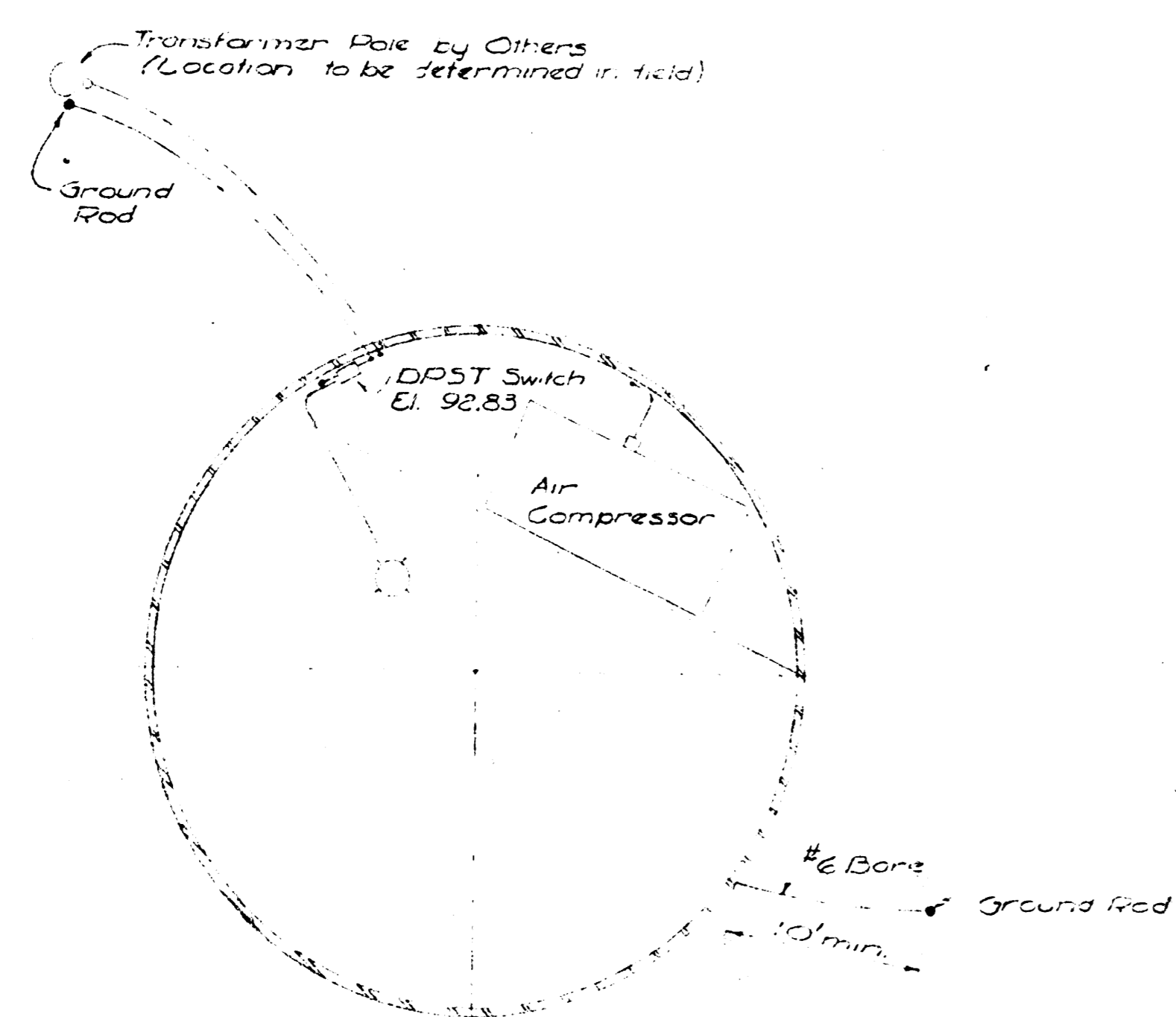
**BLACK & VEATCH
CONSULTING ENGINEERS
KANSAS CITY, MISSOURI
1954**



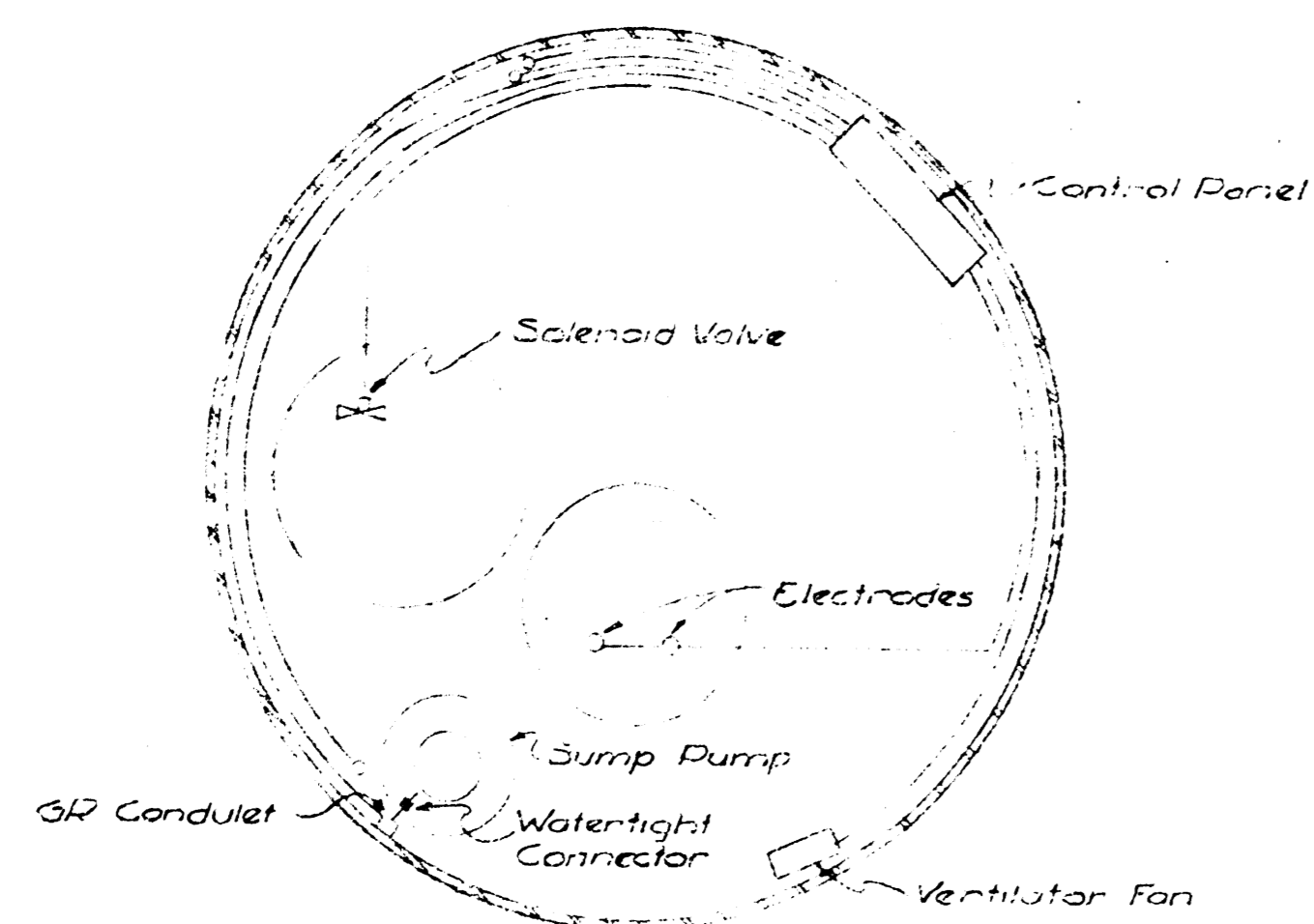
CONTRACT NO. 3 - SECTION 1	
WICHITA, KANSAS WEST SIDE MAIN SEWER	
LIFT STATION, - 51ST & GLENN	
PLANS & ELEVATIONS	
BLACK & VEATCH CONSULTING ENGINEERS, KANSAS CITY, MO.	
DESIGNED BY: <u>WJK</u>	CHECKED BY: <u>WJK</u>
DATE: <u>2-11-38</u>	DATE: <u>2-11-38</u>
APPROVED BY: <u>[Signature]</u>	APPROVED BY: <u>[Signature]</u>
SHEET 2 OF 6	



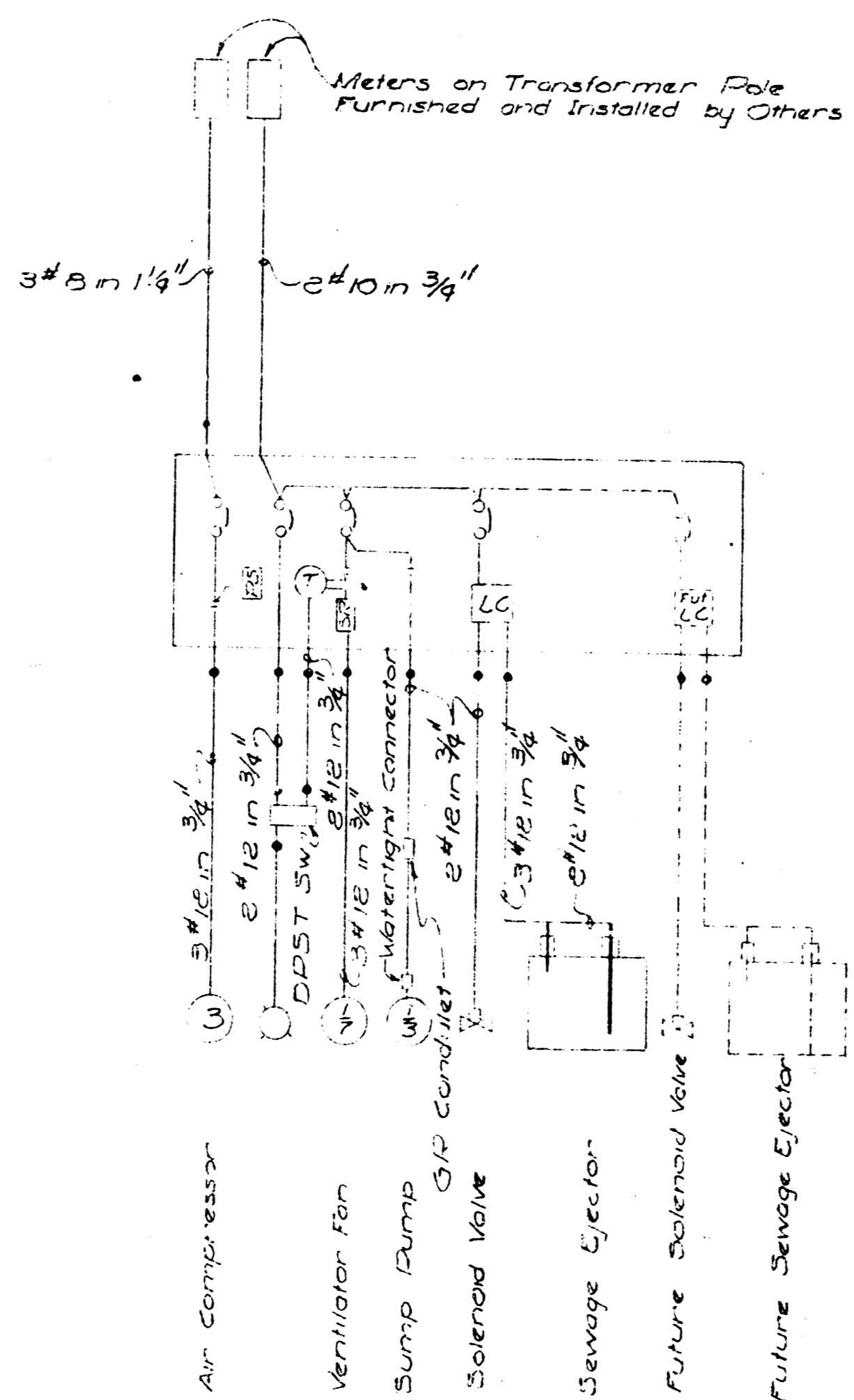




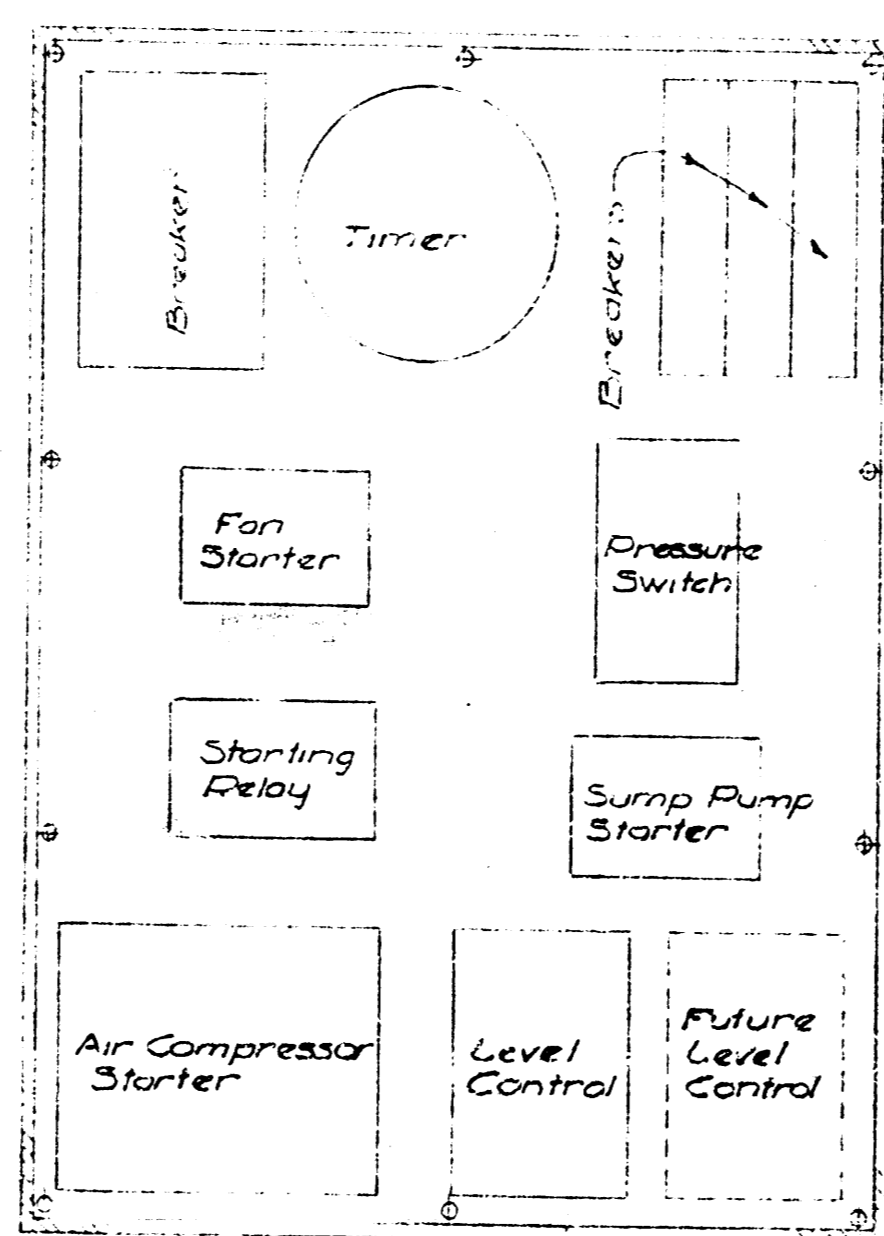
PLAN ABOVE E1. 89.53
Scale 1/2" = 1'-0"



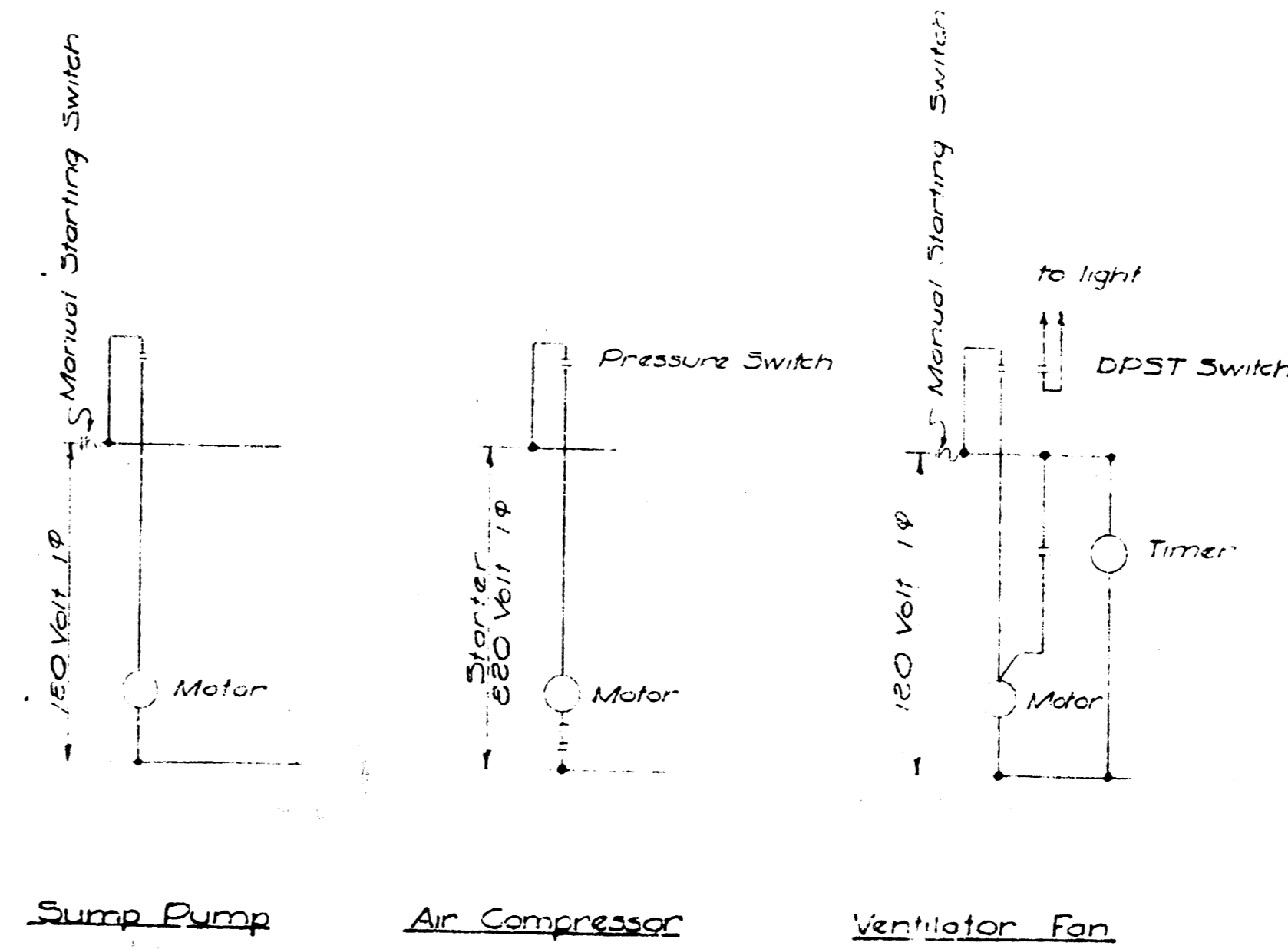
PLAN BELOW E1. 89.83
Scale 1/2" = 1'-0"



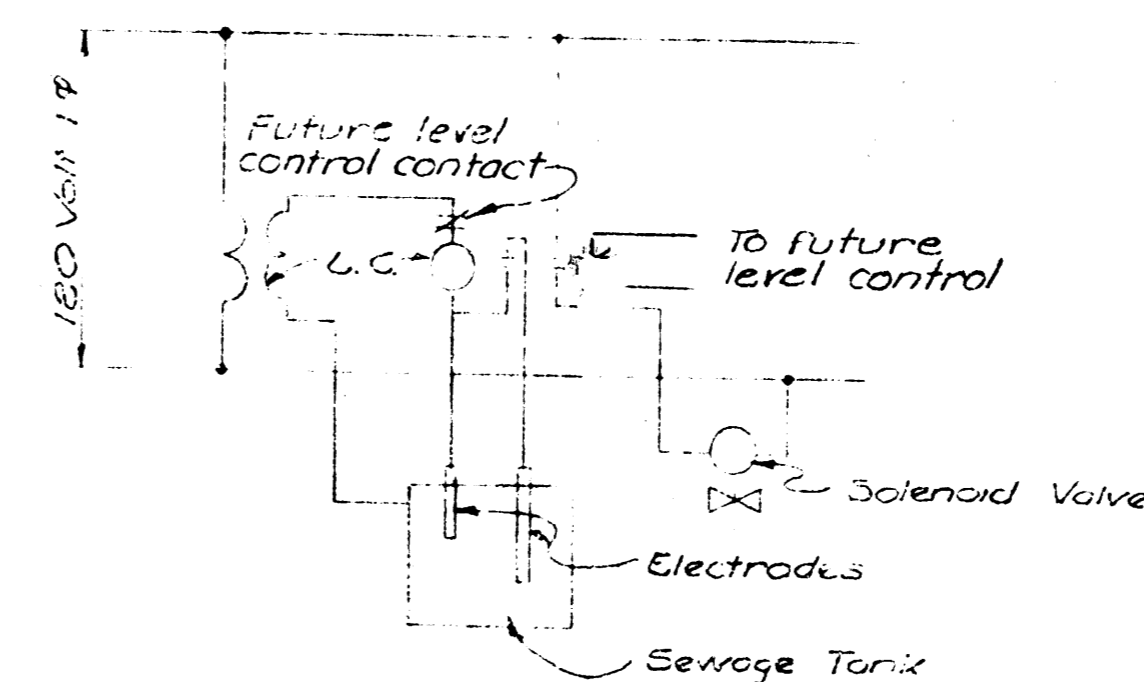
ONE LINE DIAGRAM



CONTROL PANEL
Scale 3/4" = 1'-0"



Pump Pump Air Compressor Ventilator Fan



Sewage Ejector Control

SCHEMATICS

LEGEND

- T - Timer
- DS - DPST Switch
- L.C. - Level Control
- SP - Starting Relay
- - Seal Solenoid

CONTRACT 3, SECTION II	
WICHITA, KANSAS WEST SIDE MAIN SEWER	
LIFT STATION - 33 RD & OSAGE ELECTRICAL WORK	
BLACK & VEATCH CONSULTING ENGINEERS, KANSAS CITY, MO.	
DESIGNED: <u>RLT</u>	CHECKED: <u>RLT</u>
DRAWN: <u>RLM</u>	APPROVED: <u>[Signature]</u>
DATE: <u>12-12-52</u>	SHEET: <u>6 OF 6</u>