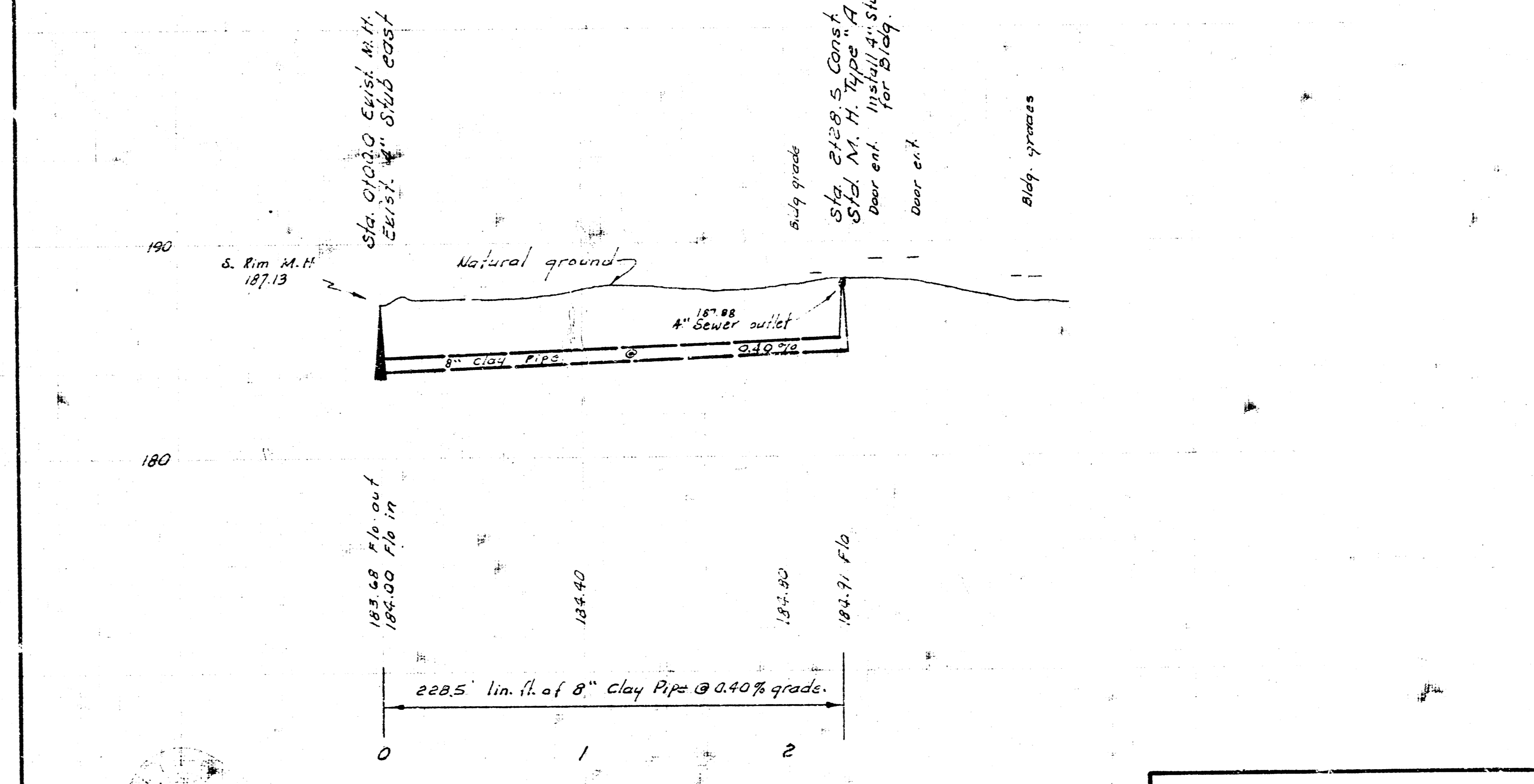
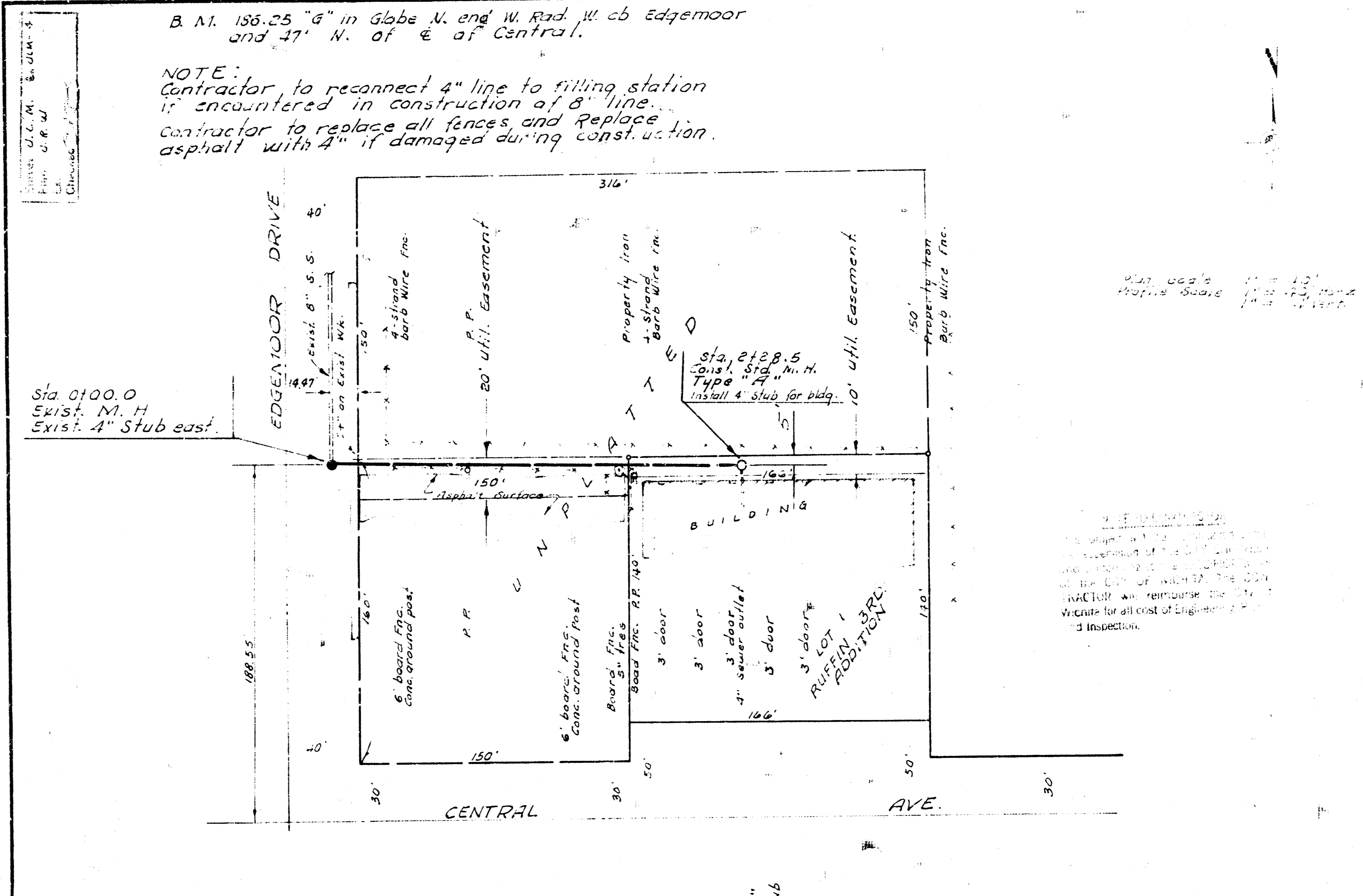


EXTENSION OF
LAT. 179, SUB. 5, S.S. 22
CITY OF WICHITA, KANSAS
B. E. SMITH, CITY ENGINEER
DATE: 4-15-1971



LAT. 69, DRY CREEK MAIN, S.S. NO. 12
CITY OF WICHITA, KANSAS
R. W. LINN - CITY ENGINEER
AUG. 1971, PRIVATE CONTRACT

NOTE:
Contractor to reconnect 4" line to filling station
if encountered in construction of 8" line.
Contractor to replace all fences and replace
asphalt with 4" if damaged during construction.

1/2" = 10' Vert.
1" = 40' Hor.

1/2" = 10' Vert.
1" = 40' Hor.