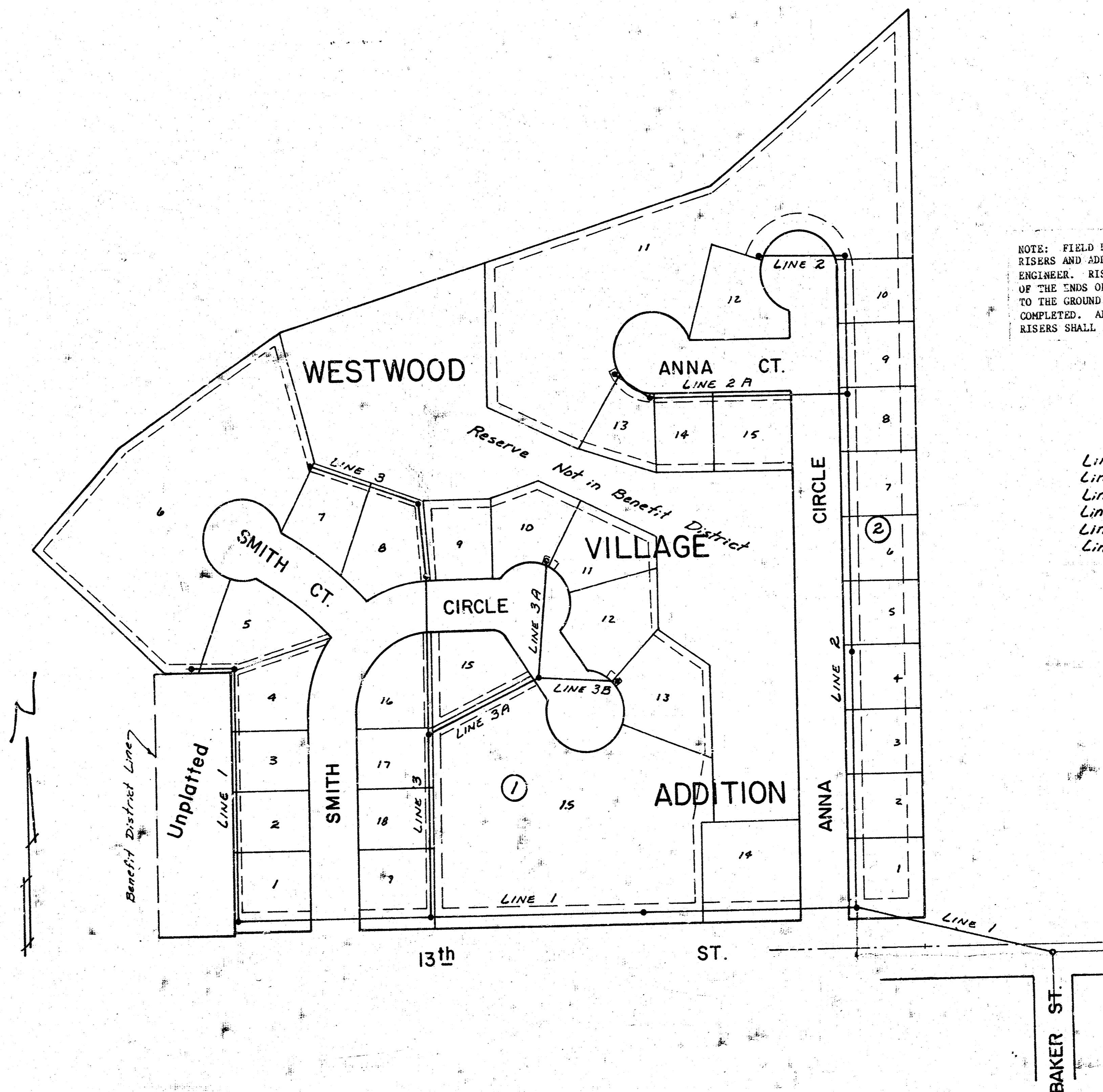


LAT 219, MAIN 5, S. S. # 22

CITY OF WICHITA

DEAN SELLERS — CITY ENGINEER

468-76-245-80174-000-000-001

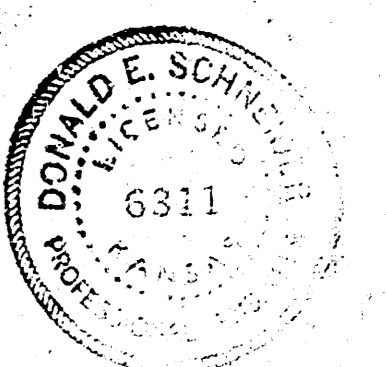


Note: Top Manhole Elevations to be set to finished grade as determined by the Developer except where noted on the Plans.

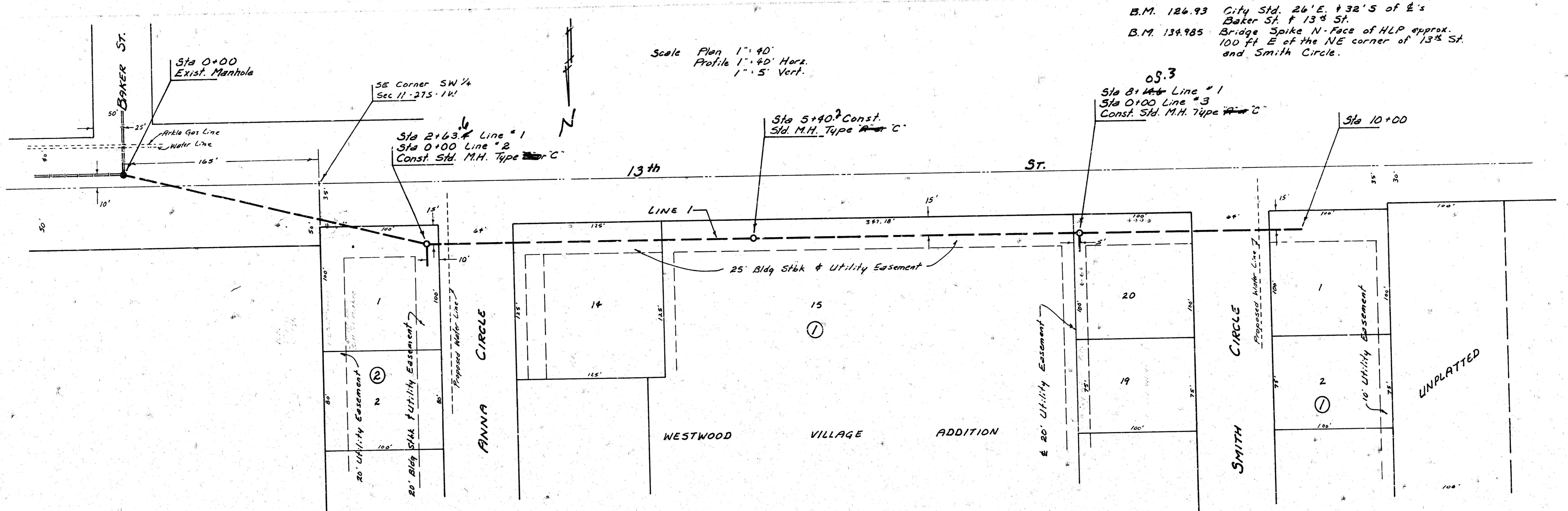
NOTE: FIELD ENGINEER SHALL SET TOPS OF MANHOLES TO MATCH PROPOSED FINISHED GRADE AS DETERMINED BY THE DEVELOPER. RISERS AND ADDITIONAL STUBS SHALL BE INSTALLED ON THIS PROJECT TO SERVE INDIVIDUAL LOTS WHEN ORDERED BY THE FIELD ENGINEER. RISER CONSTRUCTION SHALL CONFORM TO THE REQUIREMENTS AS SHOWN ON STANDARD RISER DETAIL SHEET. LOCATIONS OF THE ENDS OF THE RISERS SHALL BE MARKED BY FASTENING GREEN PLASTIC COLORED TAPE TO THE END OF THE RISER AND BROUGHT TO THE GROUND SURFACE AS THE EXCAVATION IS BACKFILLED SUCH THAT THE COLORED TAPE WILL BE VISIBLE WHEN THE PROJECT IS COMPLETED. ALL RISERS SHALL BE CONSTRUCTED USING S.D.R. 23.5 A.B.S. OR P.V.C. PIPE. ELEVATIONS OF STUBS AND TOPS OF RISERS SHALL BE SUCH THAT WILL FACILITATE CONNECTION OF BASEMENT DRAINS WHEN THESE LOTS ARE DEVELOPED.

- Line 1 Sheets 2-3
- Line 2 Sheet 4
- Line 2A Sheet 5
- Line 3 Sheets 5-6
- Line 3A Sheet 6
- Line 3B Sheet 6

As Built
4/5/1
L-82

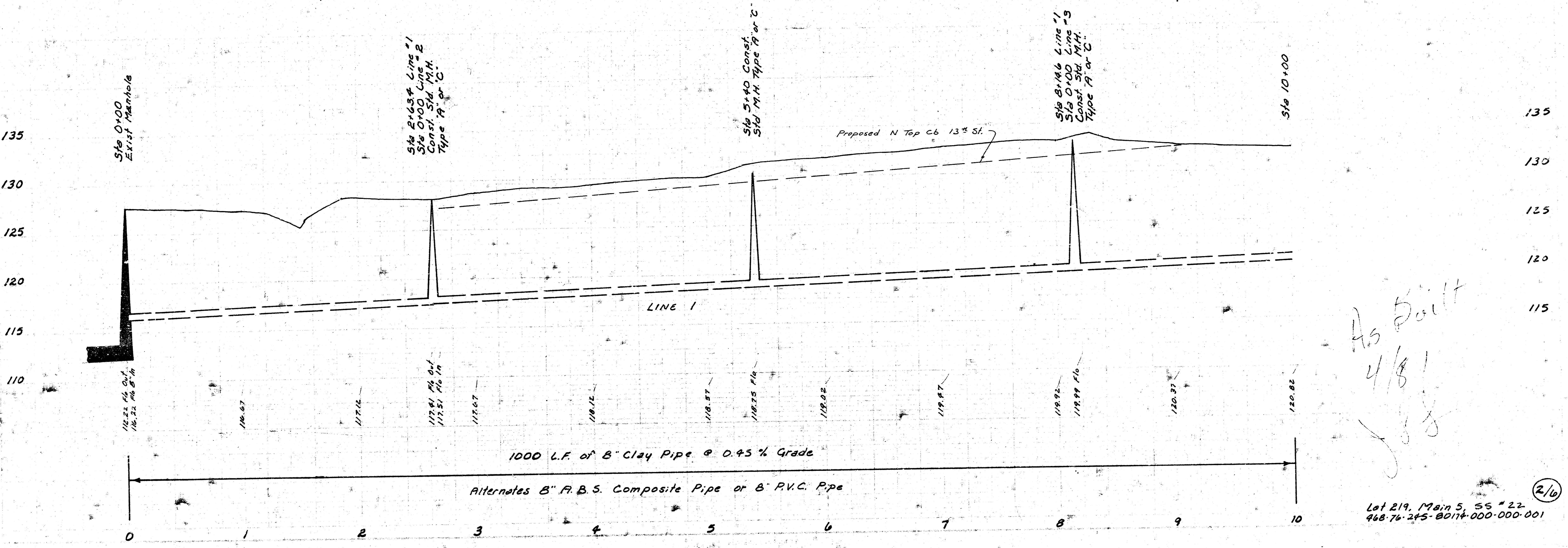


R. Hamby
D.R.W.'S



B.M. 126.93 City Std. 24'E. + 32'S of E's Baker St. + 13th St.
 B.M. 134.985 Bridge Spike N-Face of HLP approx. 100 ft E of the NE corner of 13th St. and Smith Circle.

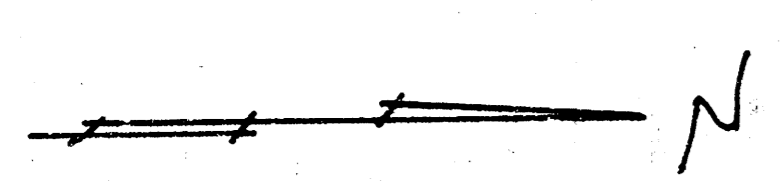
08.3



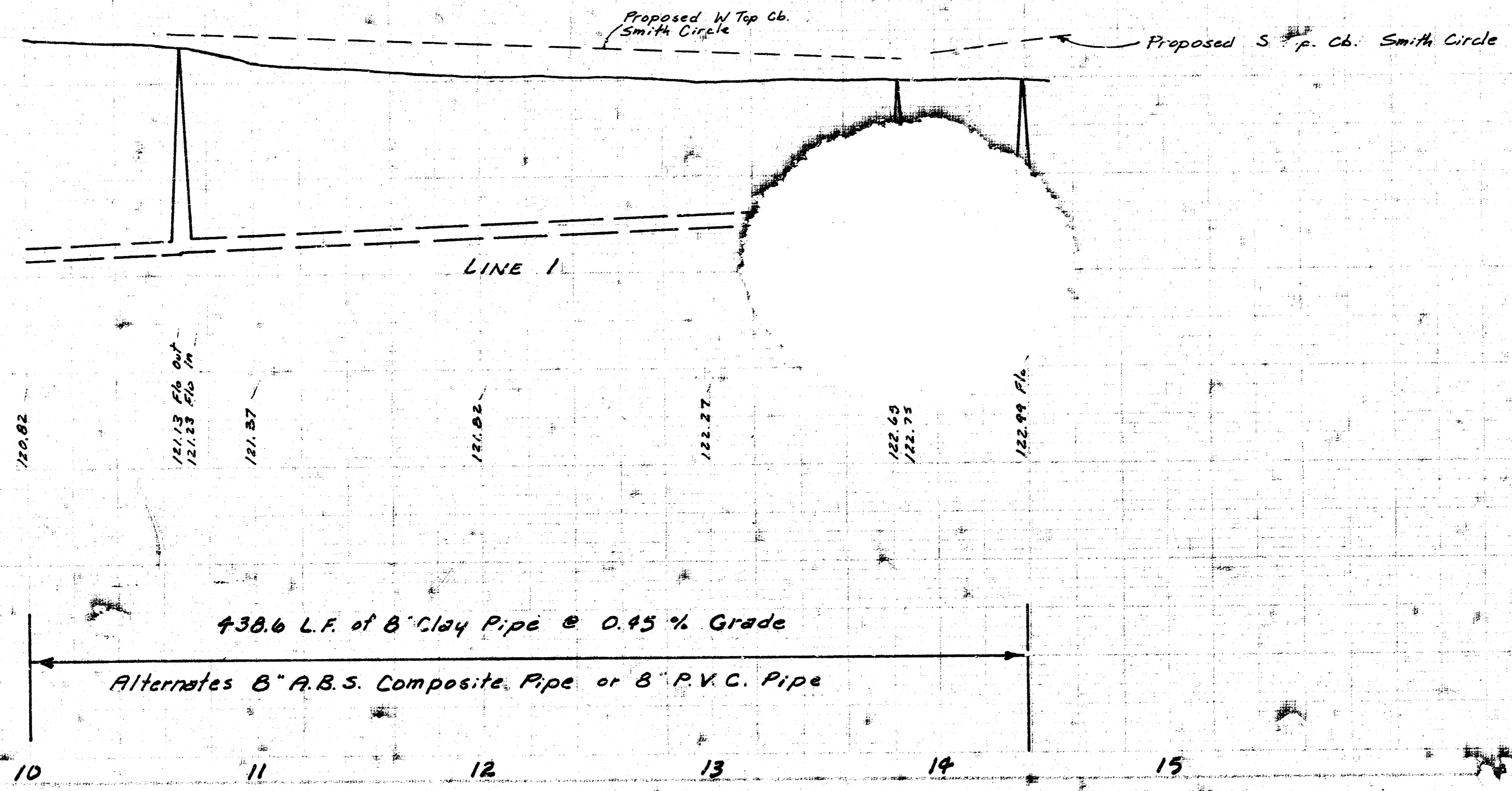
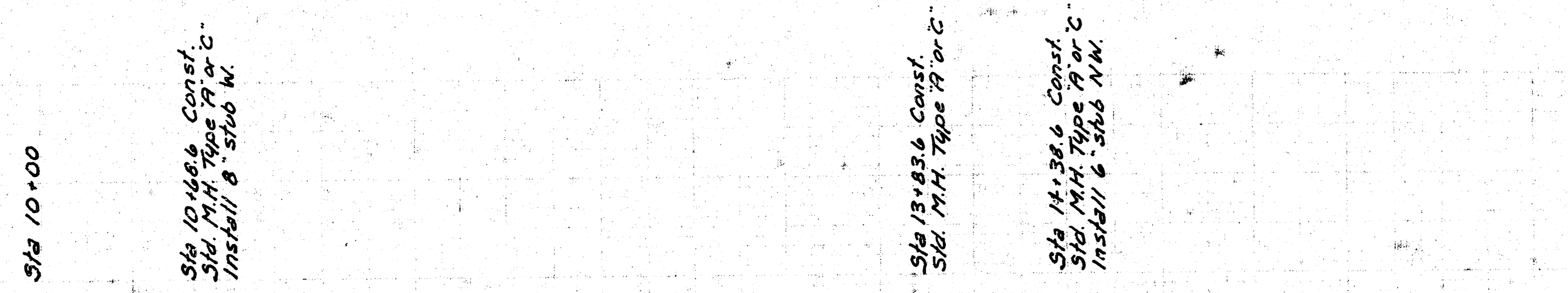
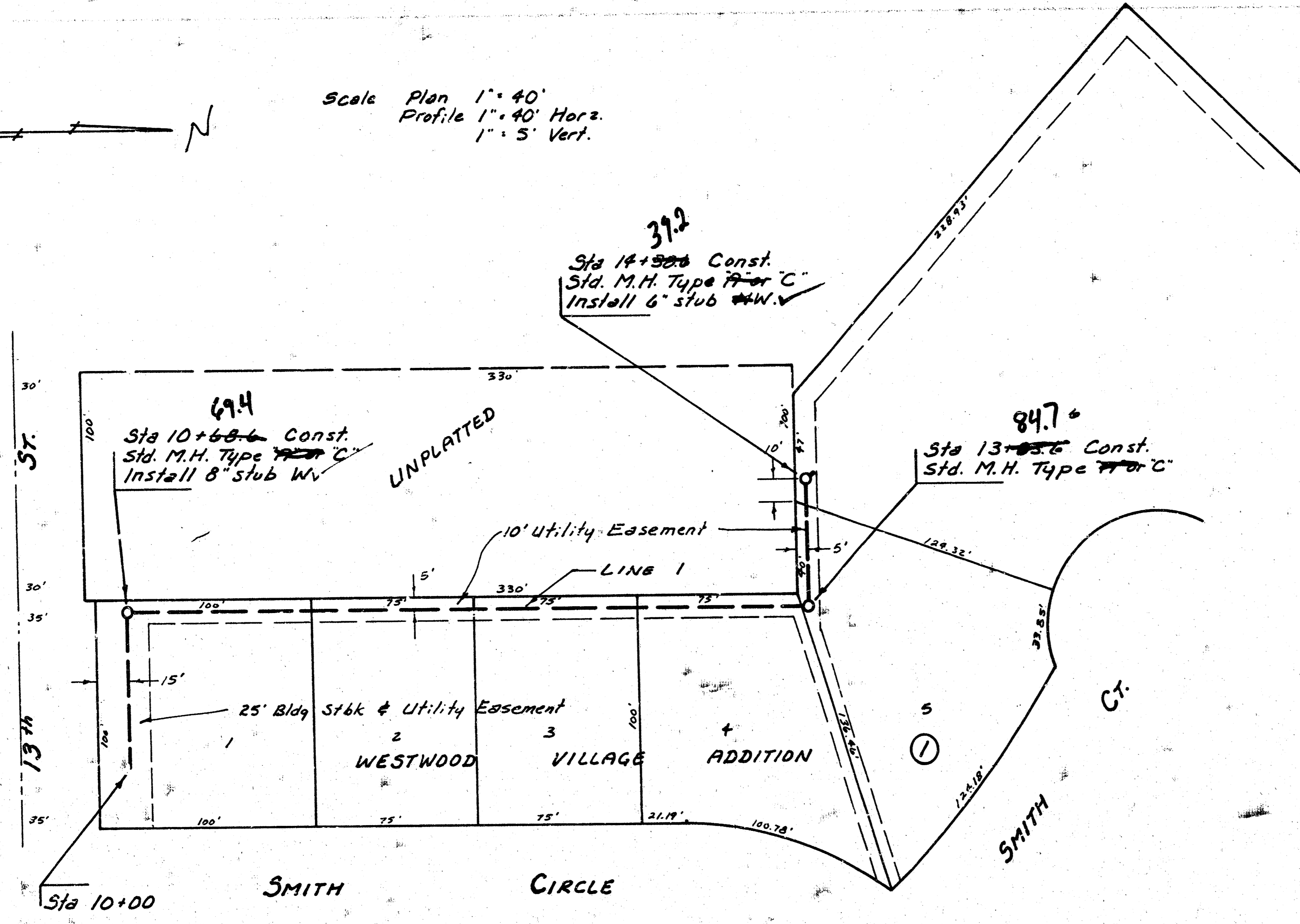
As Built
 4/8/11
 JCS

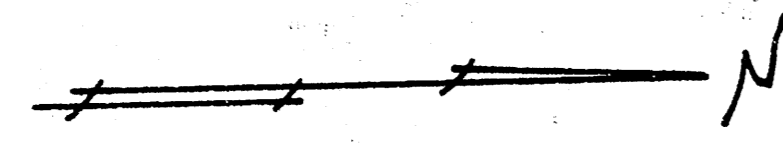
Lot 219, Main S, SS # 22
 968-76-245-0011+000-000-001

2/6

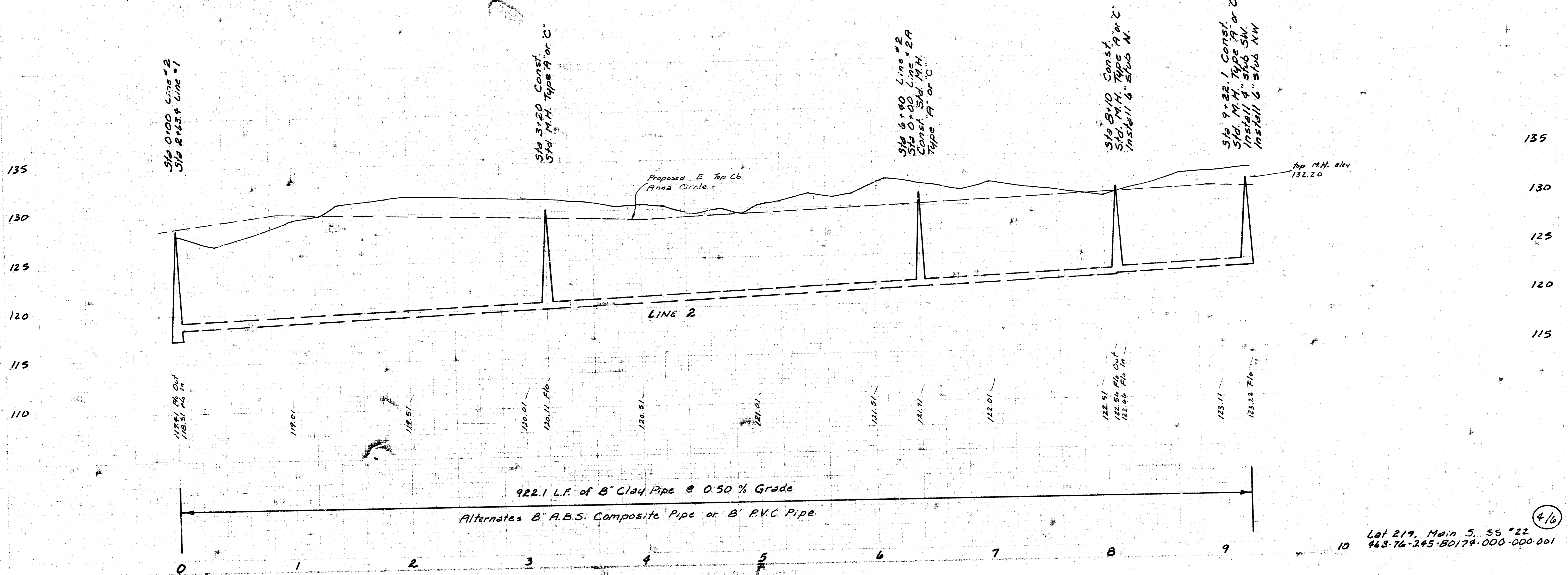
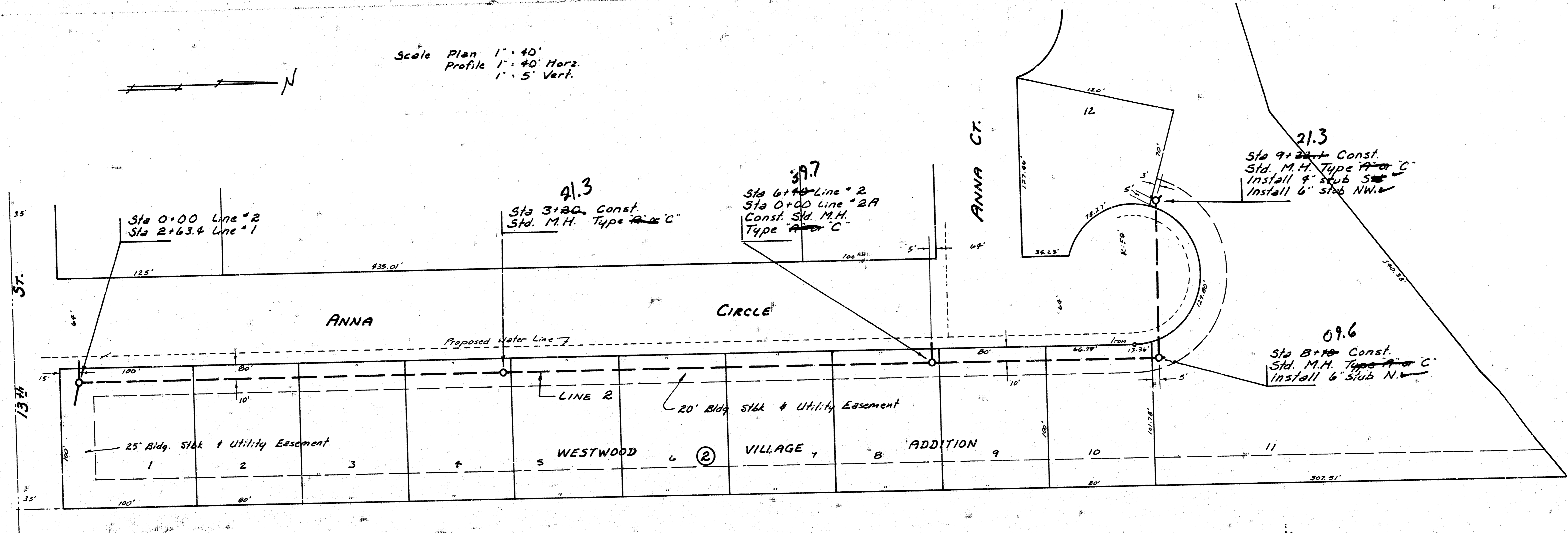


Scale Plan 1" = 40'
 Profile 1" = 40' Horiz.
 1" = 5' Vert.

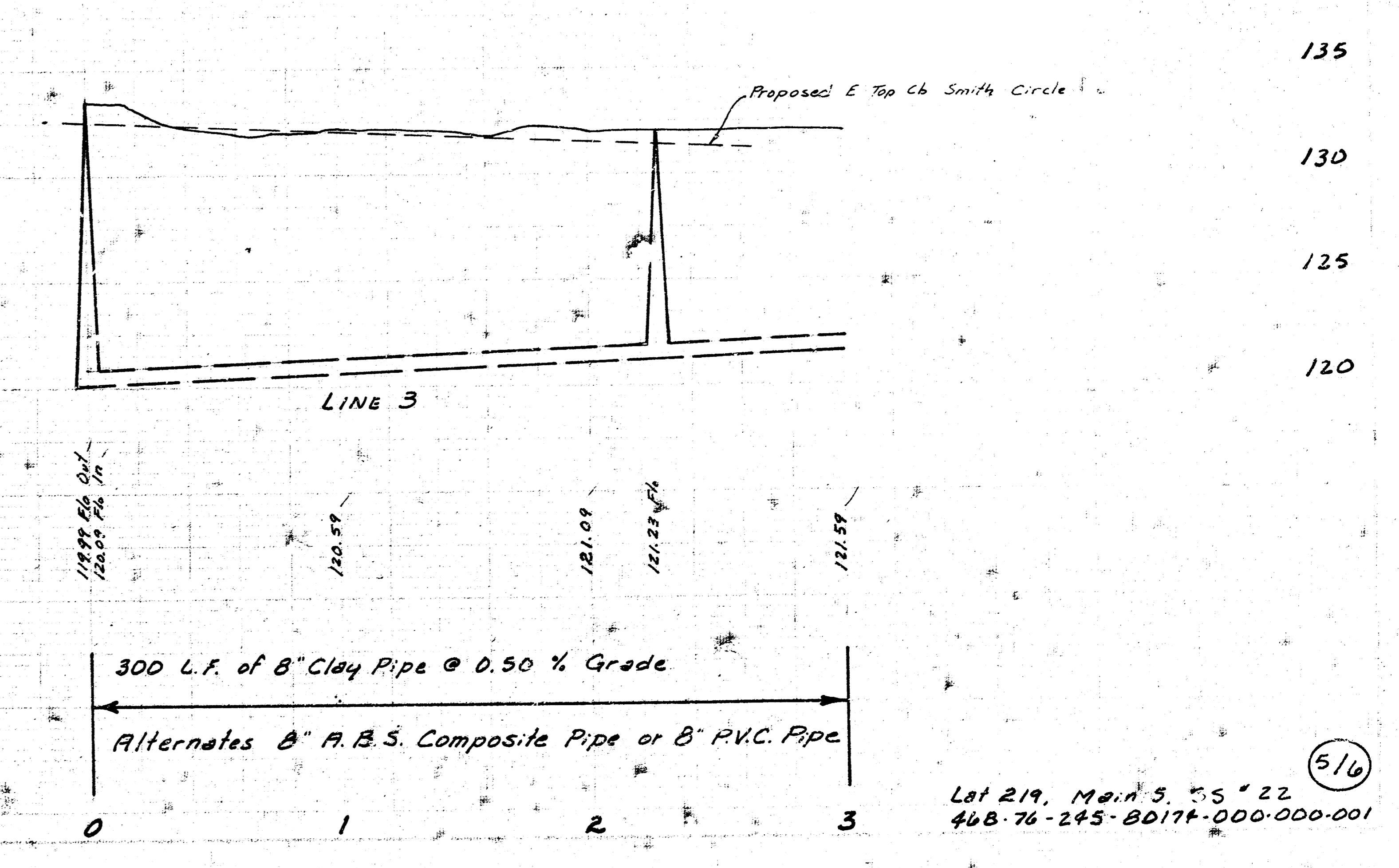
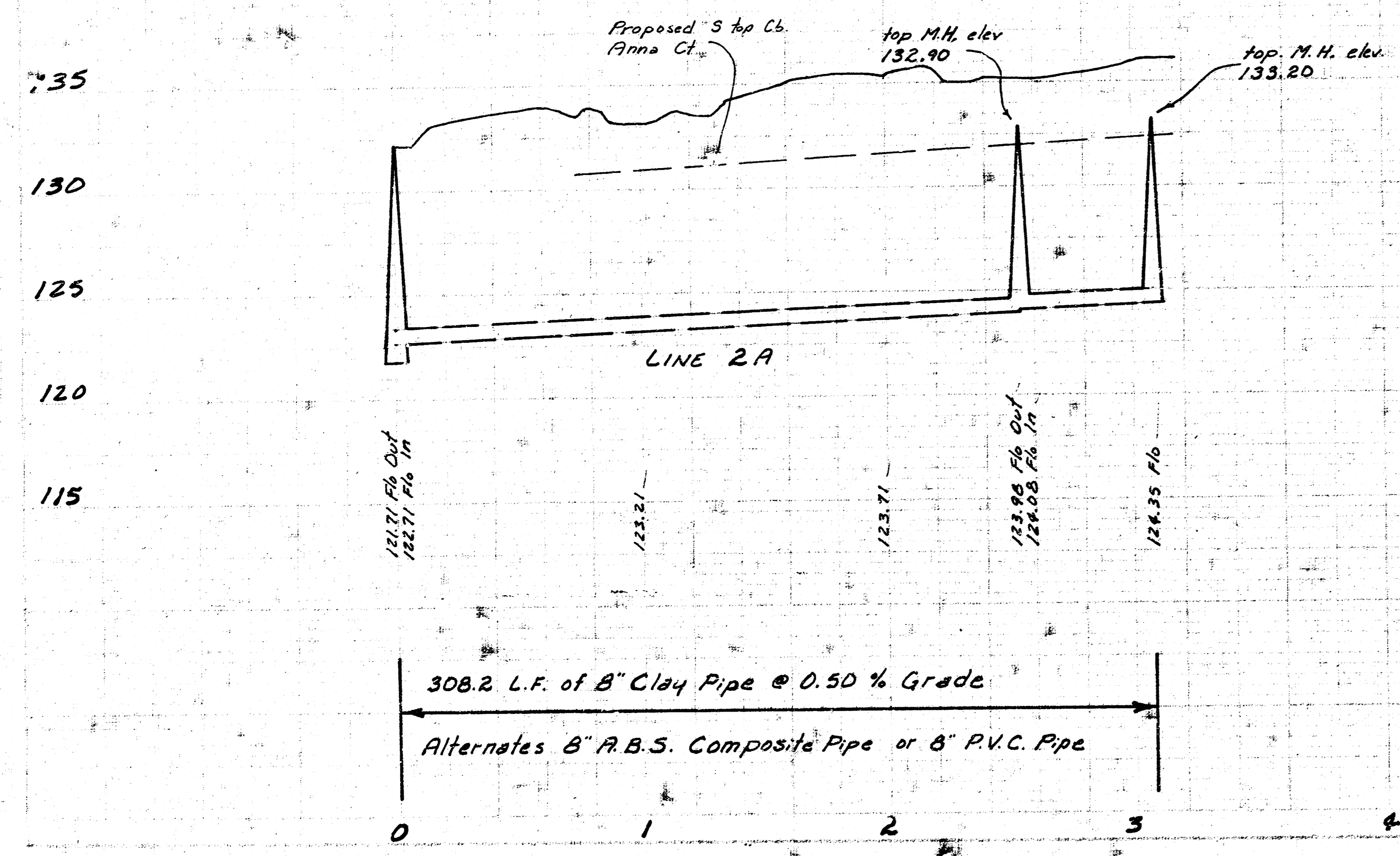
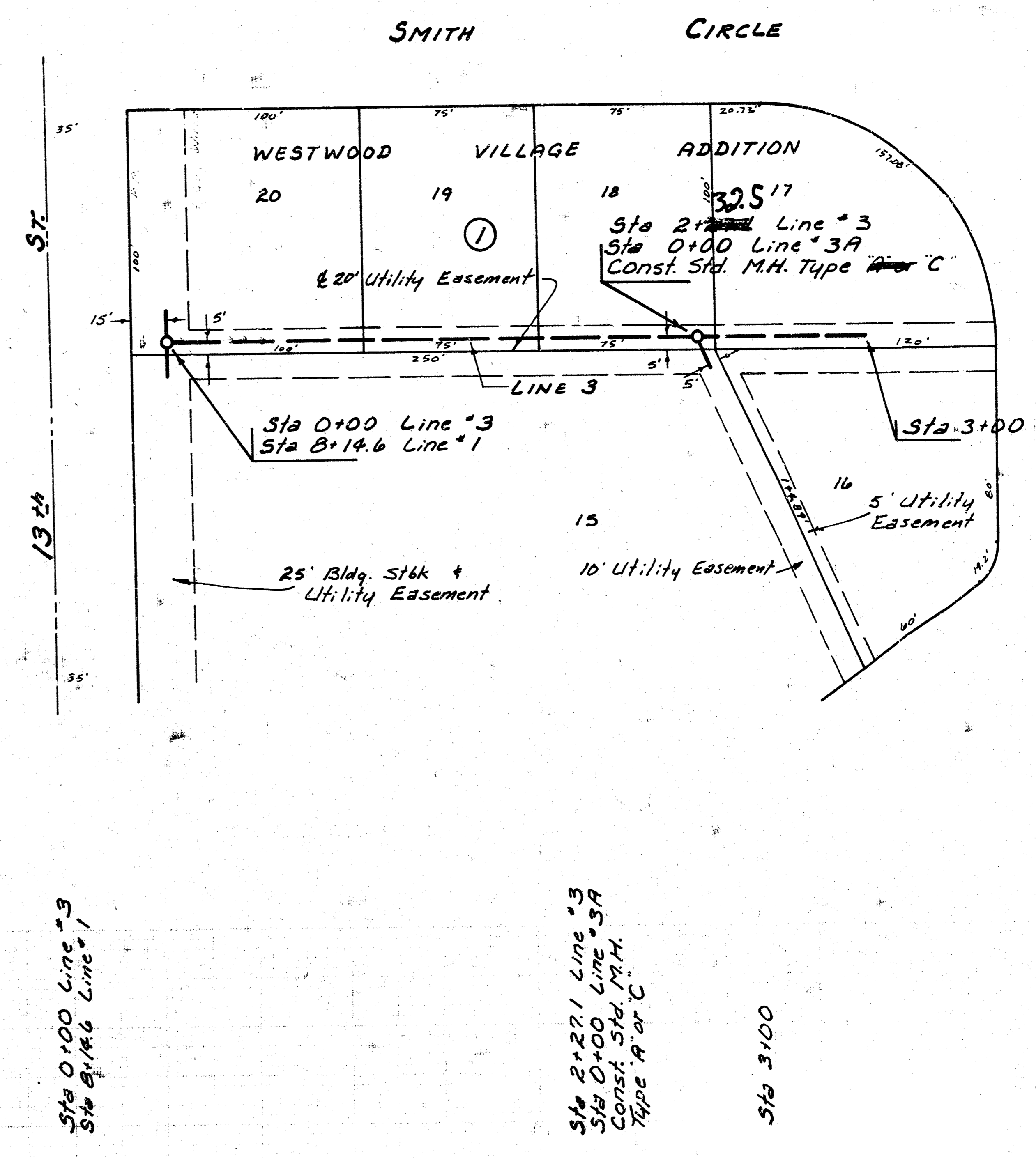
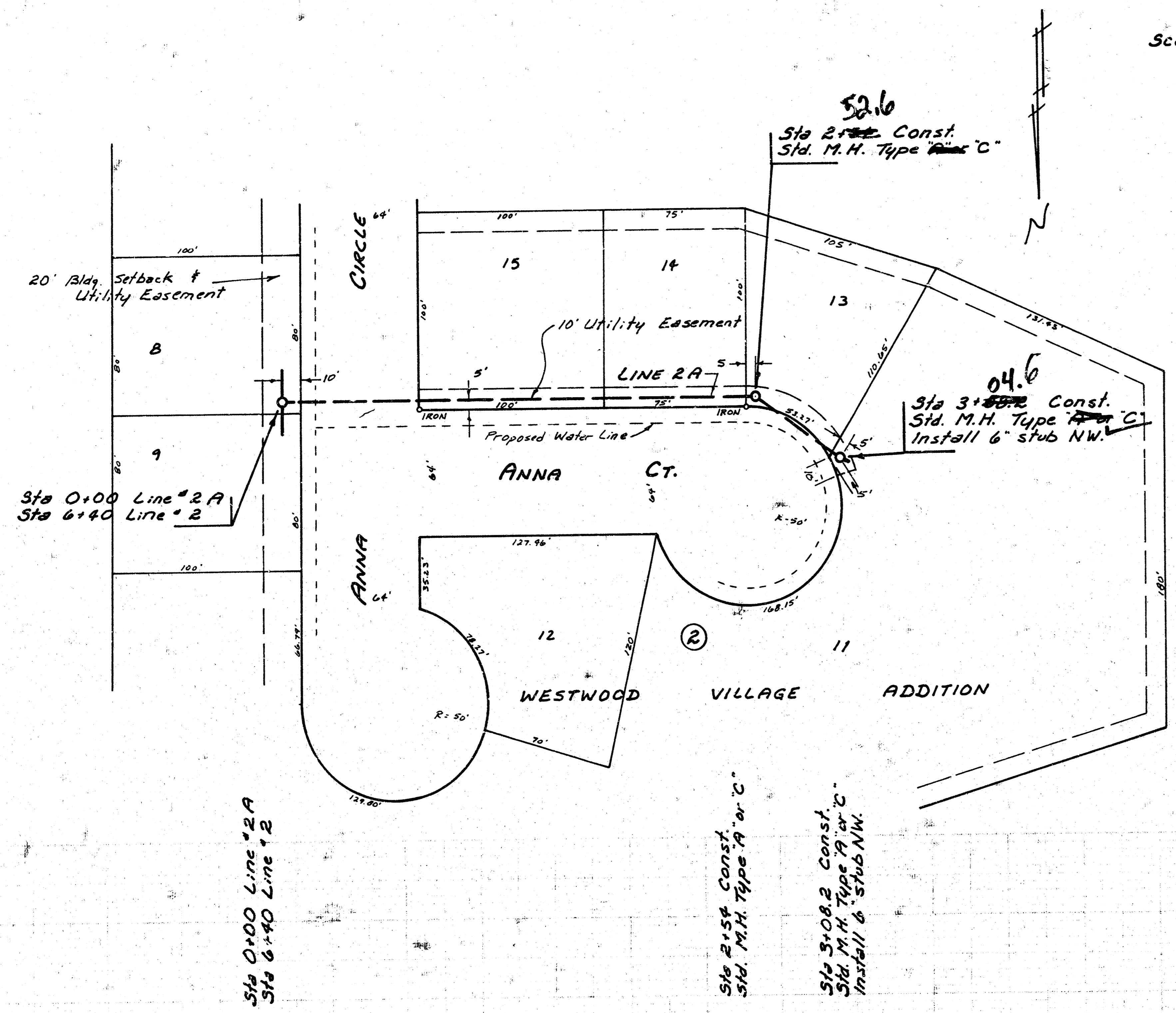
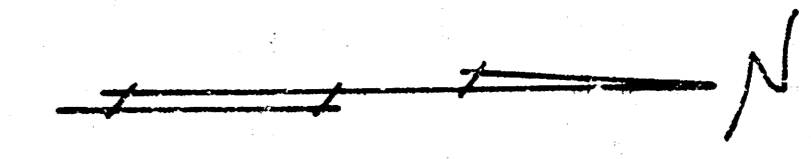




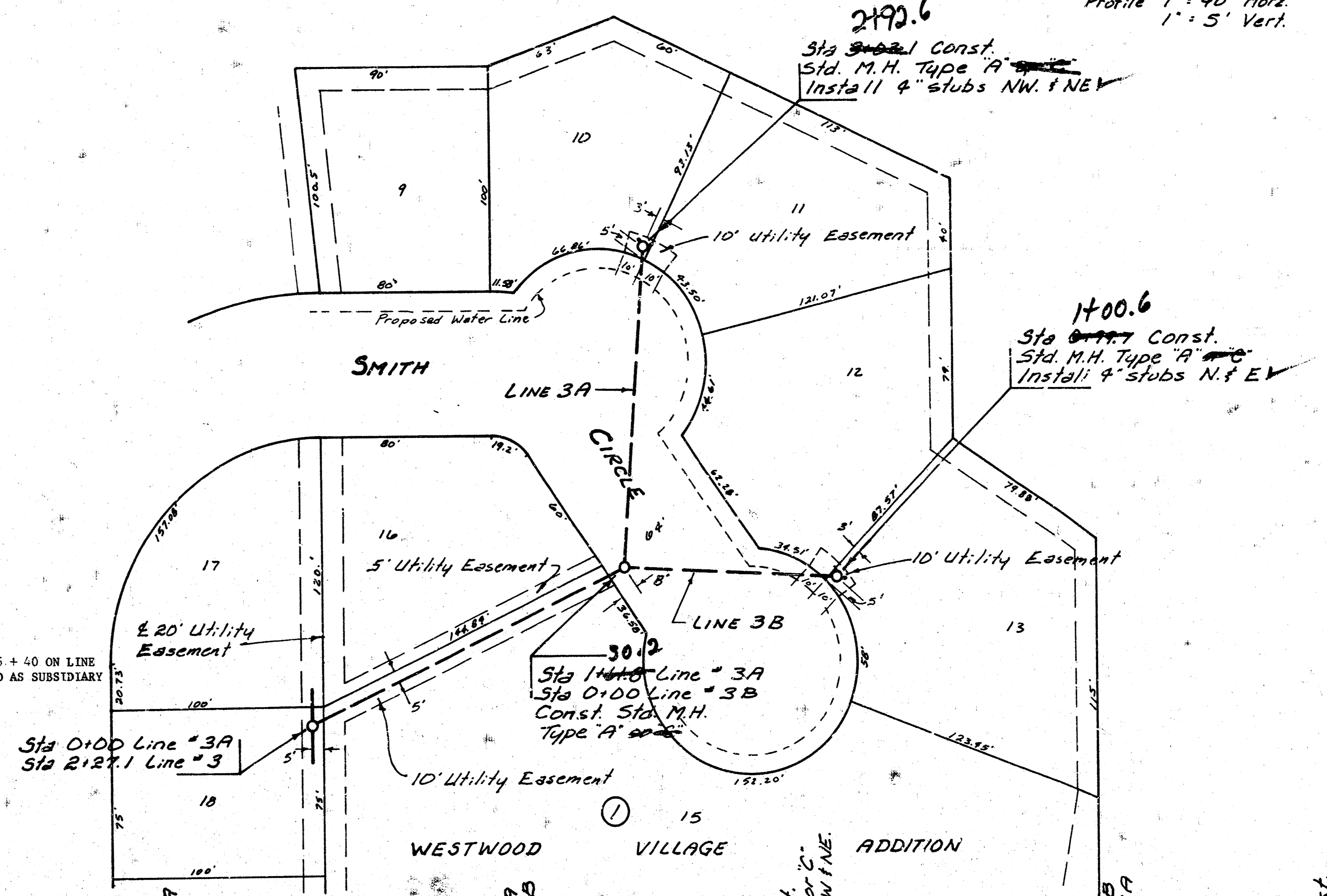
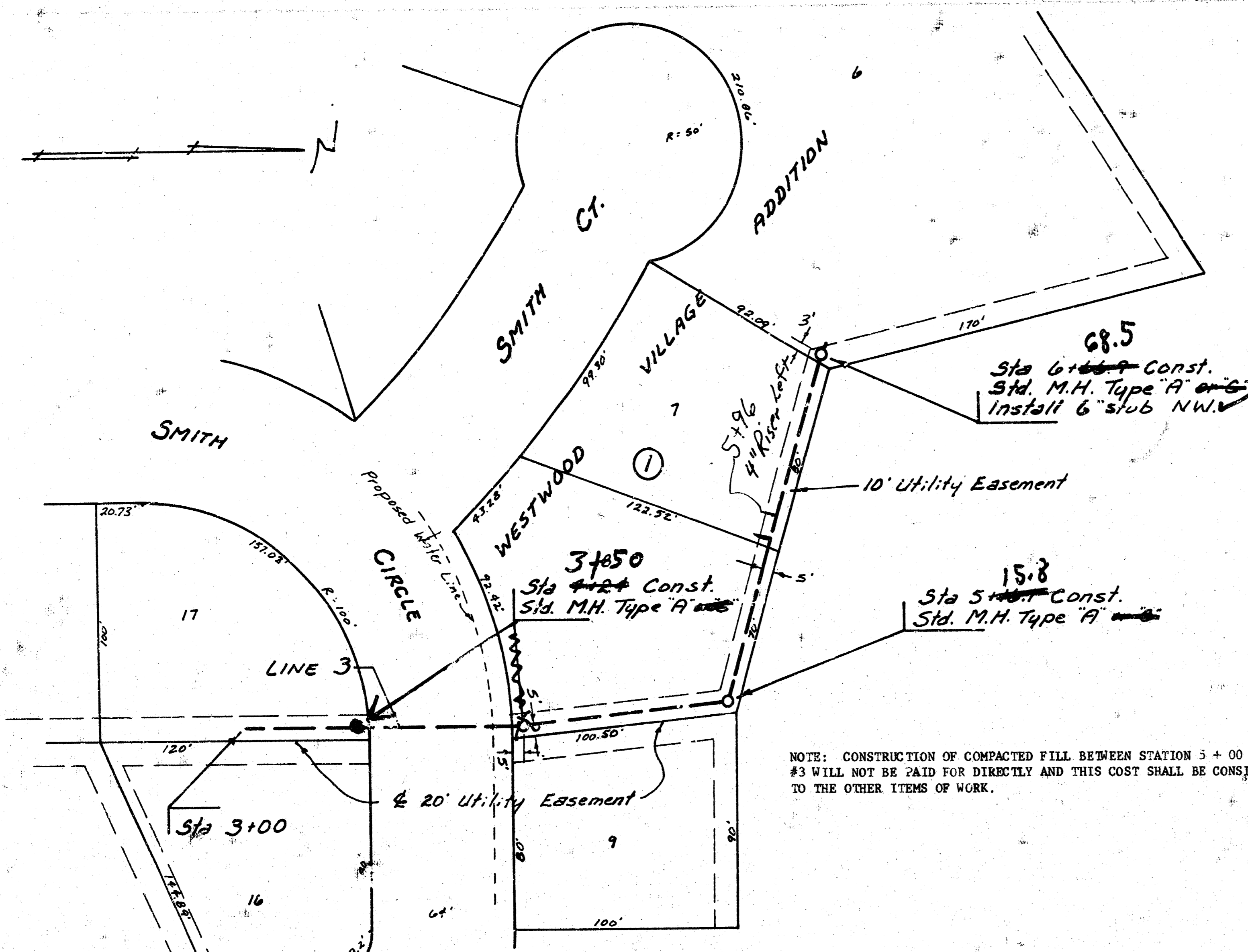
Scale Plan 1" = 40'
Profile 1" = 40' Horiz.
1" = 5' Vert.



Scale Plan 1" = 40'
 Profile 1" = 40' Horiz.
 1" = 5' Vert.

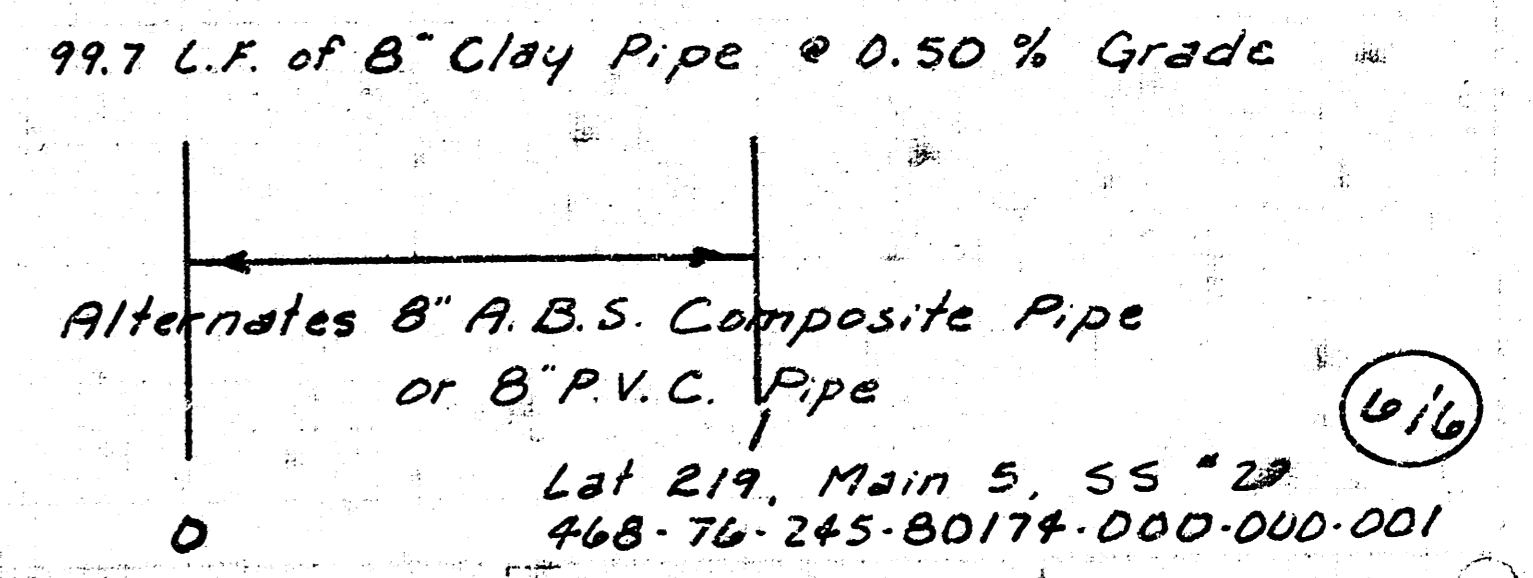
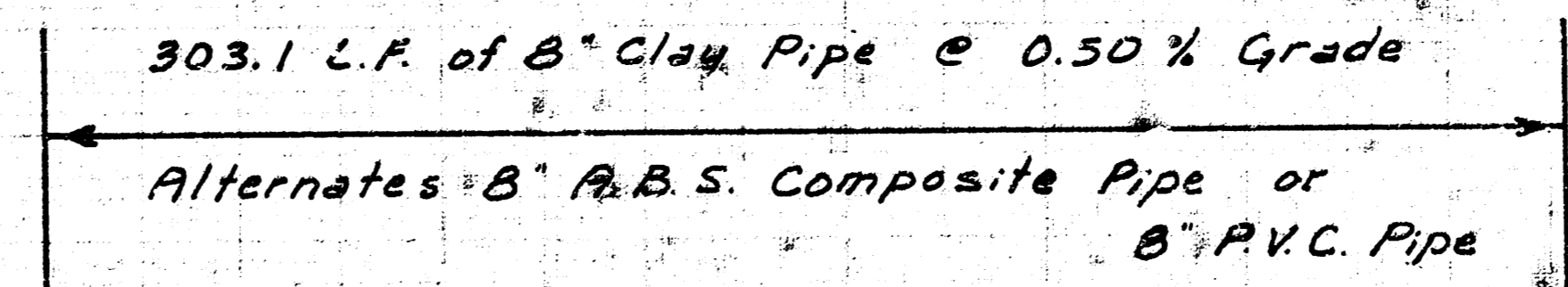
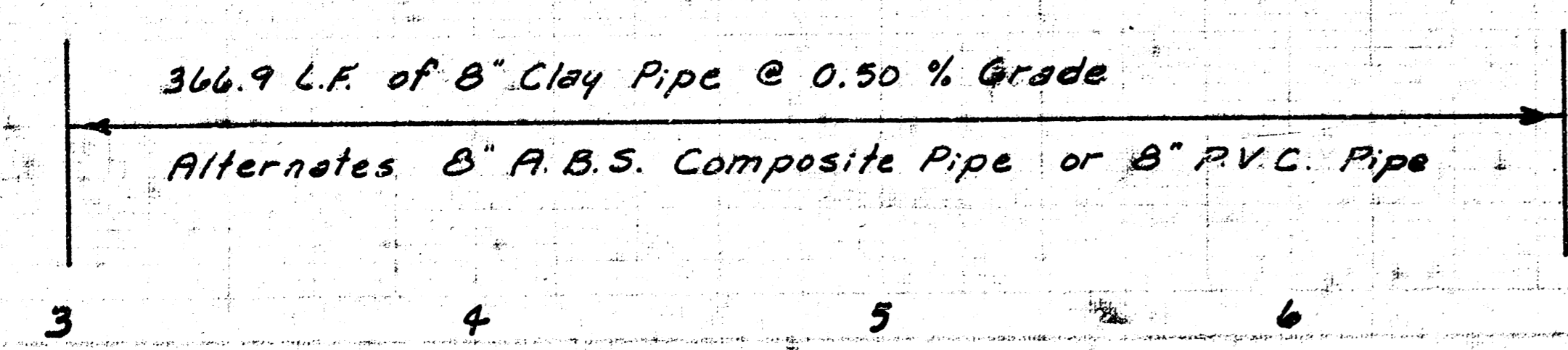
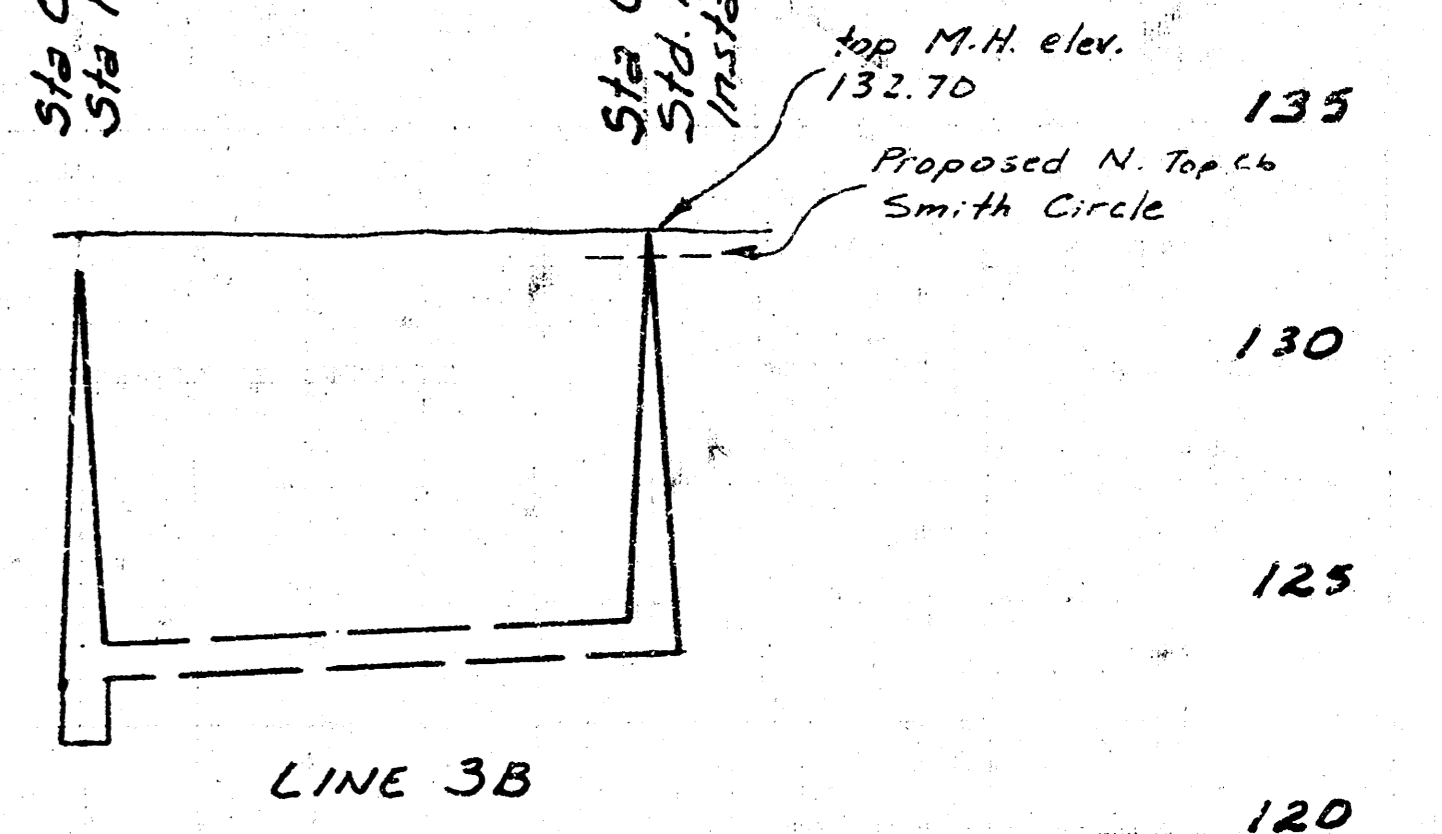
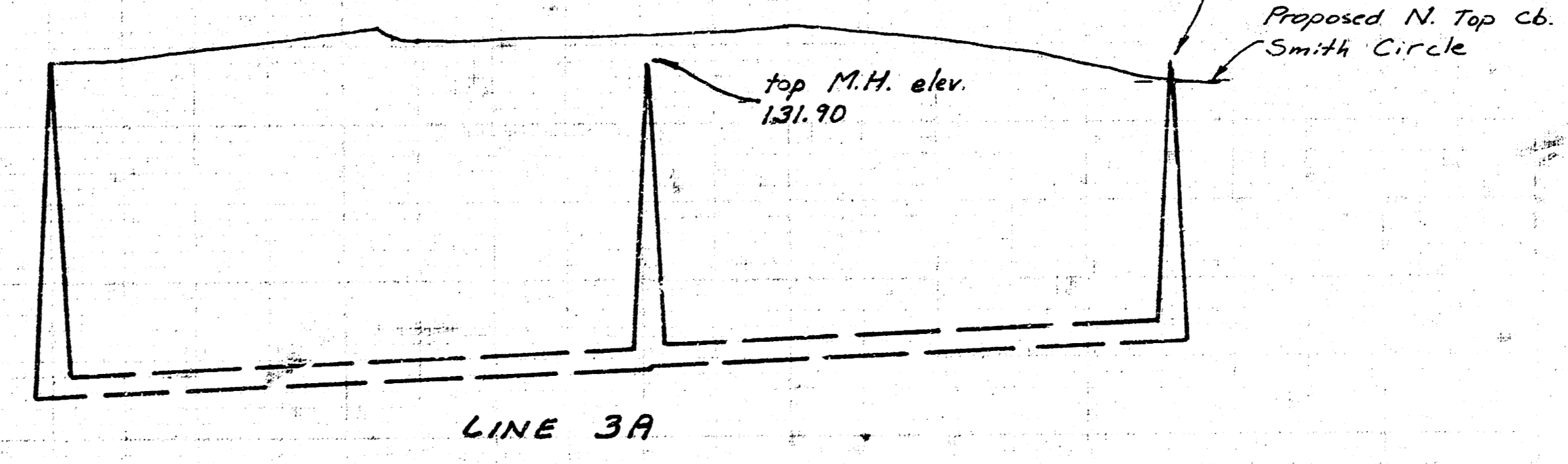
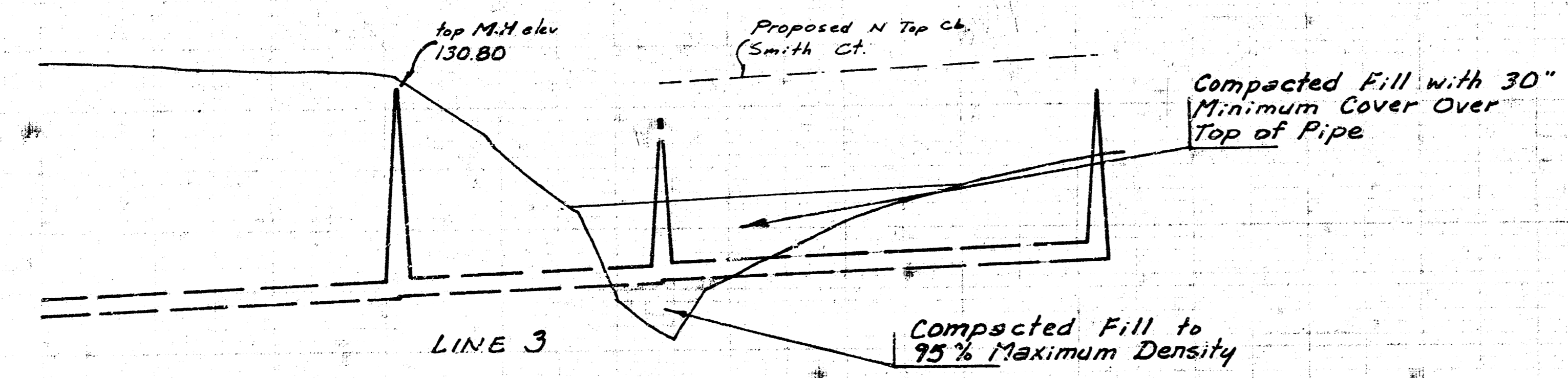


Scale Plan 1" = 40'
 Profile 1" = 40' Horiz.
 1" = 5' Vert.



NOTE: CONSTRUCTION OF COMPACTED FILL BETWEEN STATION 5+00 AND 5+40 ON LINE #3 WILL NOT BE PAID FOR DIRECTLY AND THIS COST SHALL BE CONSIDERED AS SUBSIDIARY TO THE OTHER ITEMS OF WORK.

135
130
125
120
115



Lat 219, Main 5, SS "20"
 468-76-245-80174-000-000-001