

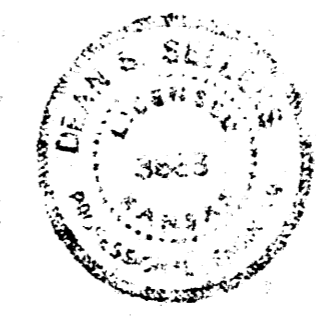
LOCATION MAP

LAT. 23, SUB. 17, S.S. NO. 22

CITY OF WICHITA, KANSAS

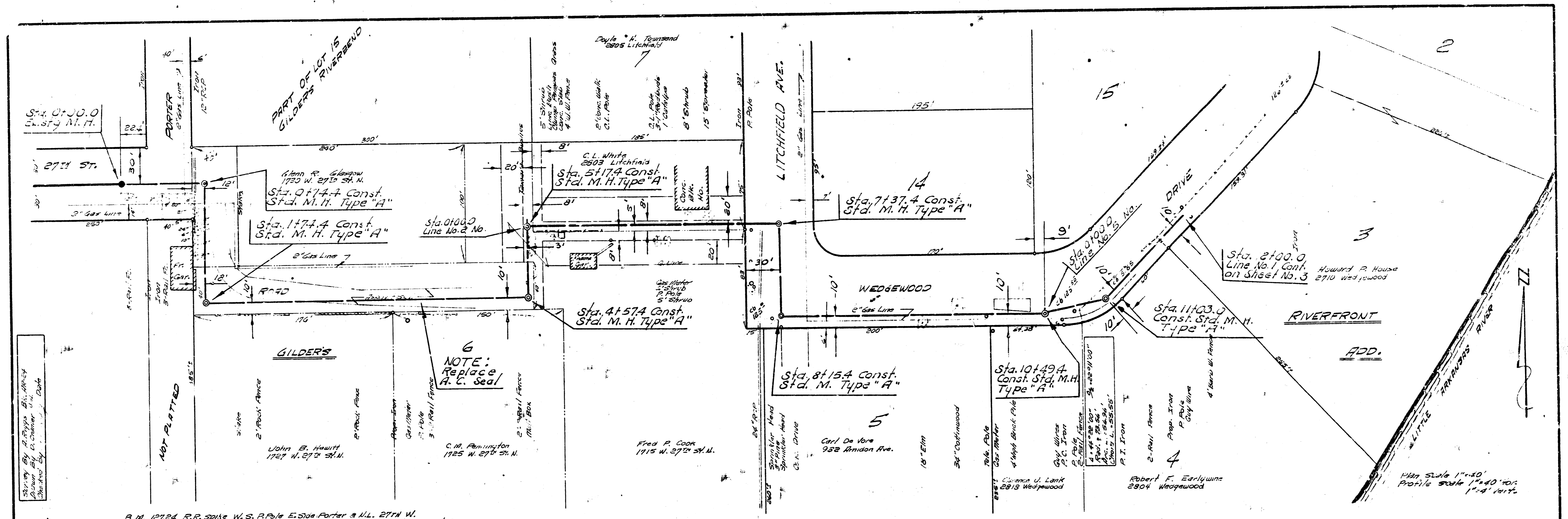
B. E. SMITH, CITY ENGINEER

PROJ. NO. C23-50

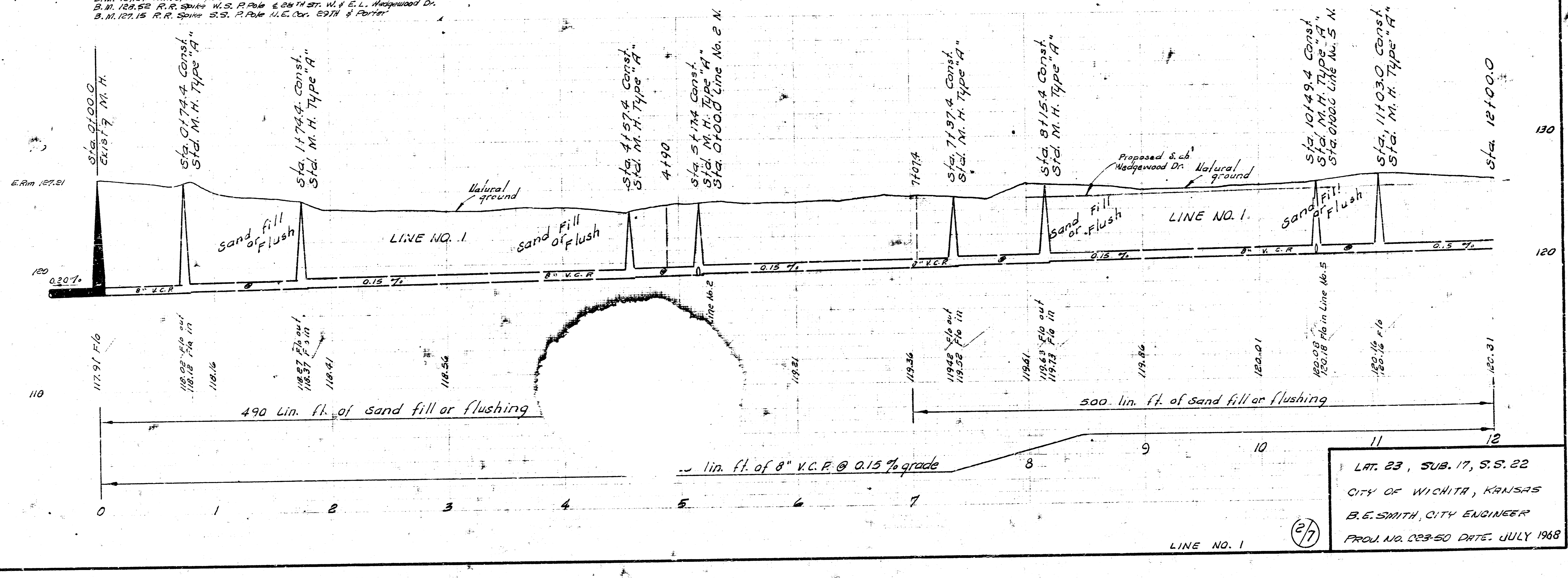


17

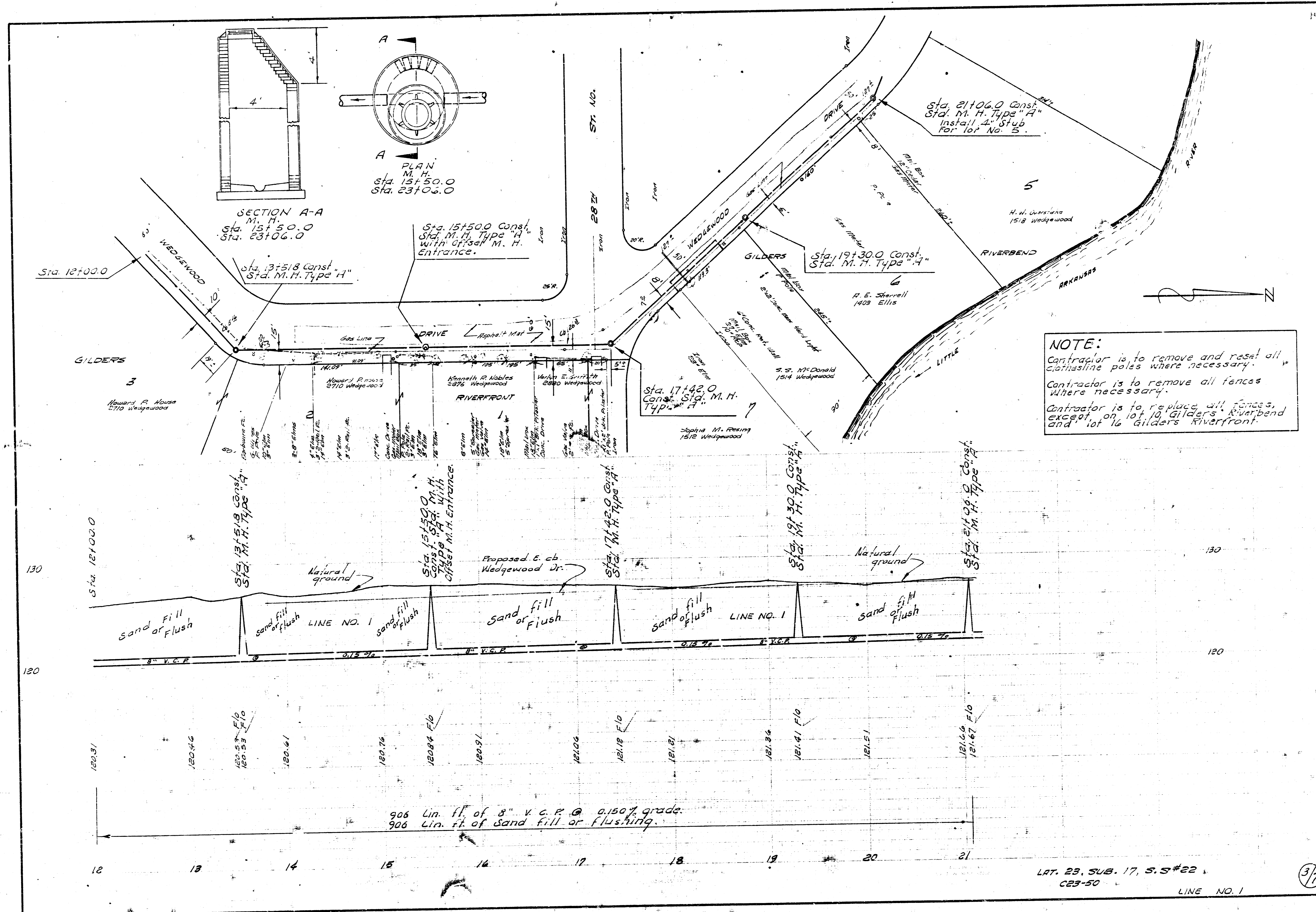
LAT. 23, SUB. 17, S.S. NO. 22
 PROJ. NO. C23-50

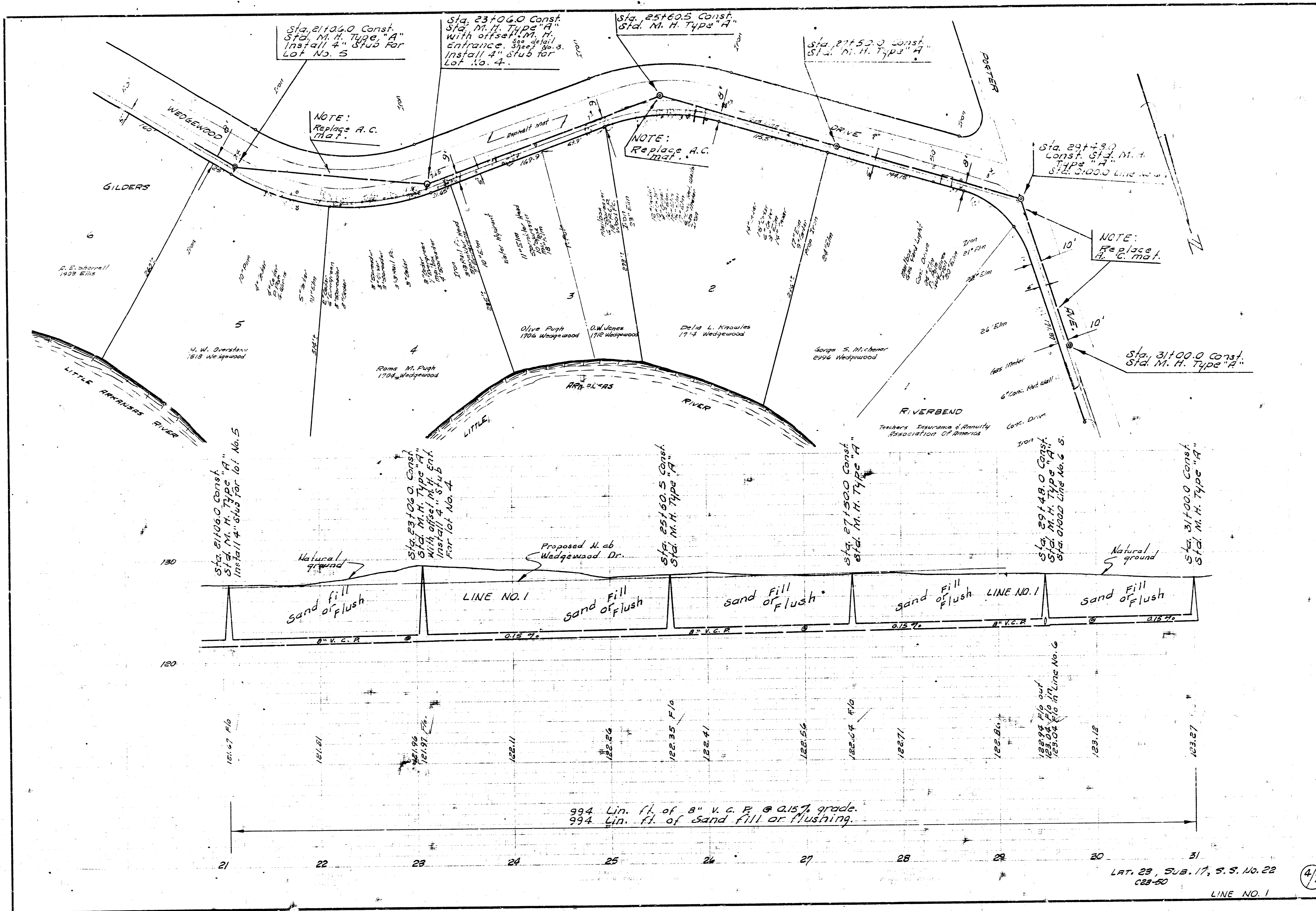


B.M. 12524 R.R. Spike W.S. Pole E. Side Porter & Ill. 27th W.
 B.M. 12522 R.R. Spike W.S. Pole E. Side Porter & Ill. Wedgewood Dr.
 B.M. 12515 R.R. Spike S.S. Pole N.E. Cor. 29th & Porter



27
 LAT. 23, SUB. 17, S.S. 22
 CITY OF WICHITA, KANSAS
 B.E. SMITH, CITY ENGINEER
 PROJ. NO. 023-50 DATE, JULY 1968





Sta. 21106.0 Const.
Std. M. H. Type "A"
Install 4" stub for
Lot No. 5

Sta. 23106.0 Const.
Std. M. H. Type "A"
with offset M. H. Ent.
entrance. Sheet No. 3.
Install 4" stub for
Lot No. 4.

Sta. 25100.5 Const.
Std. M. H. Type "A"

Sta. 27150.0 Const.
Std. M. H. Type "A"

Sta. 29149.0 Const.
Std. M. H. Type "A"
Sta. 31000.0 Const.
Std. M. H. Type "A"

Sta. 31400.0 Const.
Std. M. H. Type "A"

NOTE:
Replace A.C.
mat.

NOTE:
Replace A.C.
mat.

NOTE:
Replace
A.C. mat.

Sta. 21106.0 Const.
Std. M. H. Type "A"
Install 4" stub for lot No. 5

Sta. 23106.0 Const.
Std. M. H. Type "A"
with offset M. H. Ent.
Install 4" stub
for lot No. 4

Sta. 25100.5 Const.
Std. M. H. Type "A"

Sta. 27150.0 Const.
Std. M. H. Type "A"

Sta. 29149.0 Const.
Std. M. H. Type "A"
Sta. 31000.0 Const.
Std. M. H. Type "A"

Sta. 31400.0 Const.
Std. M. H. Type "A"

Natural ground

Proposed N. ab
Wedgwood Dr.

Natural ground

sand fill
of flush

LINE NO. 1

sand fill
of flush

sand fill
of flush

sand fill
of flush

LINE NO. 1

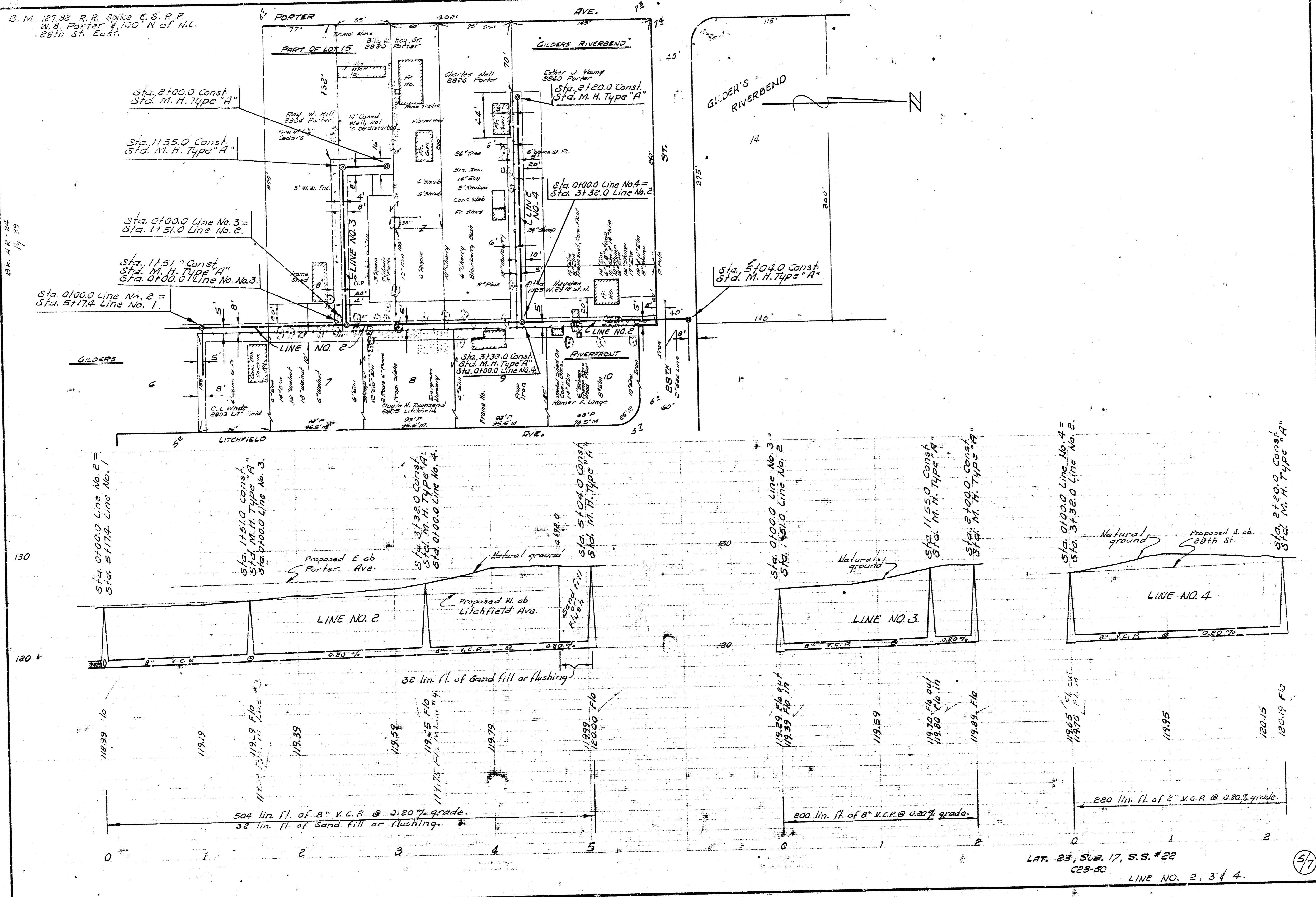
sand fill
of flush

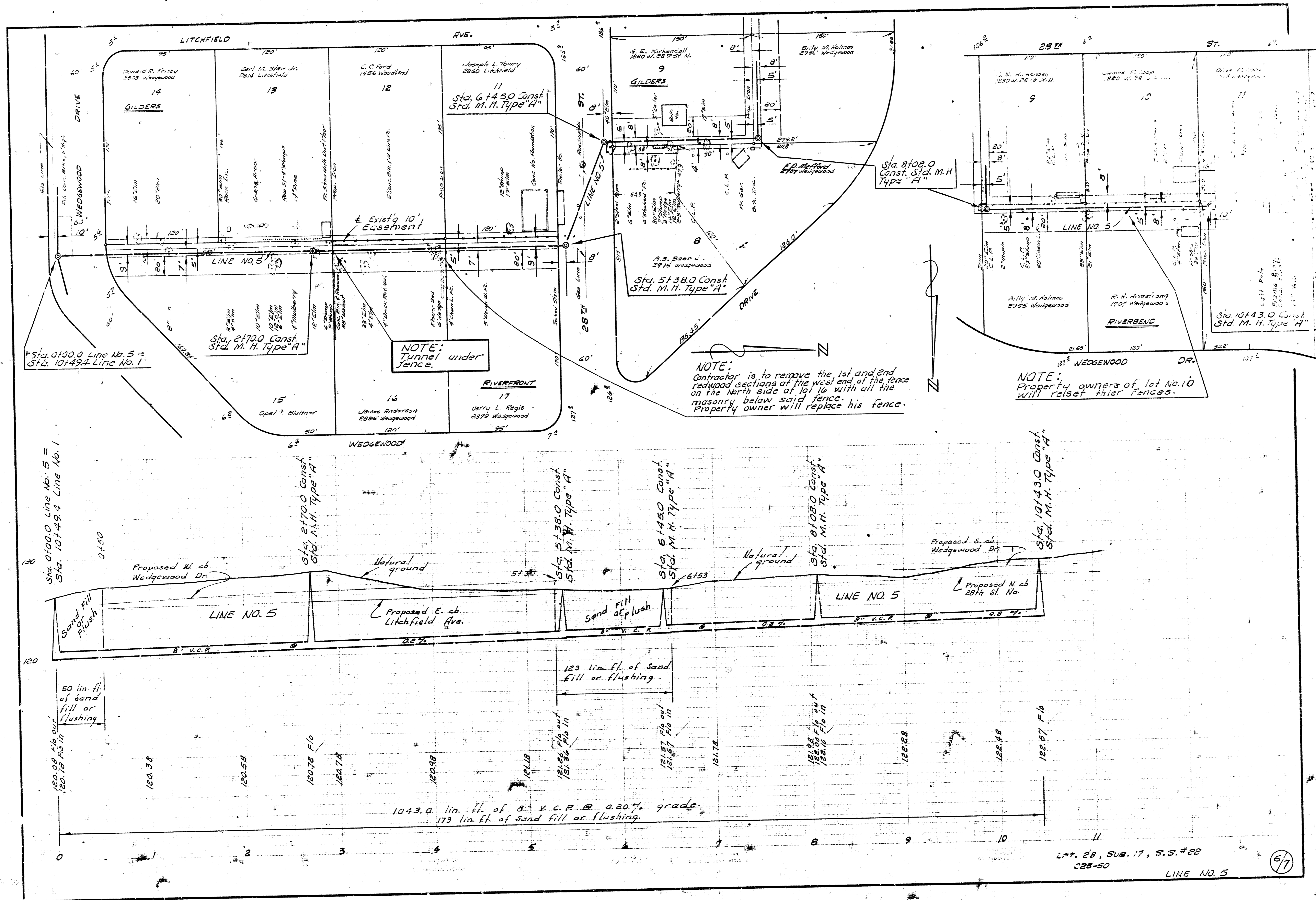
994 Lin. ft. of 8" V.C.P. @ 0.15% grade.
994 Lin. ft. of sand fill or flushing.

LAT. 23, SUB. 17, S. S. NO. 22
C23-50

LINE NO. 1

47





LPT. 23, SUB. 17, S.S. #22
 C23-50
 LINE NO. 5 (57)

