

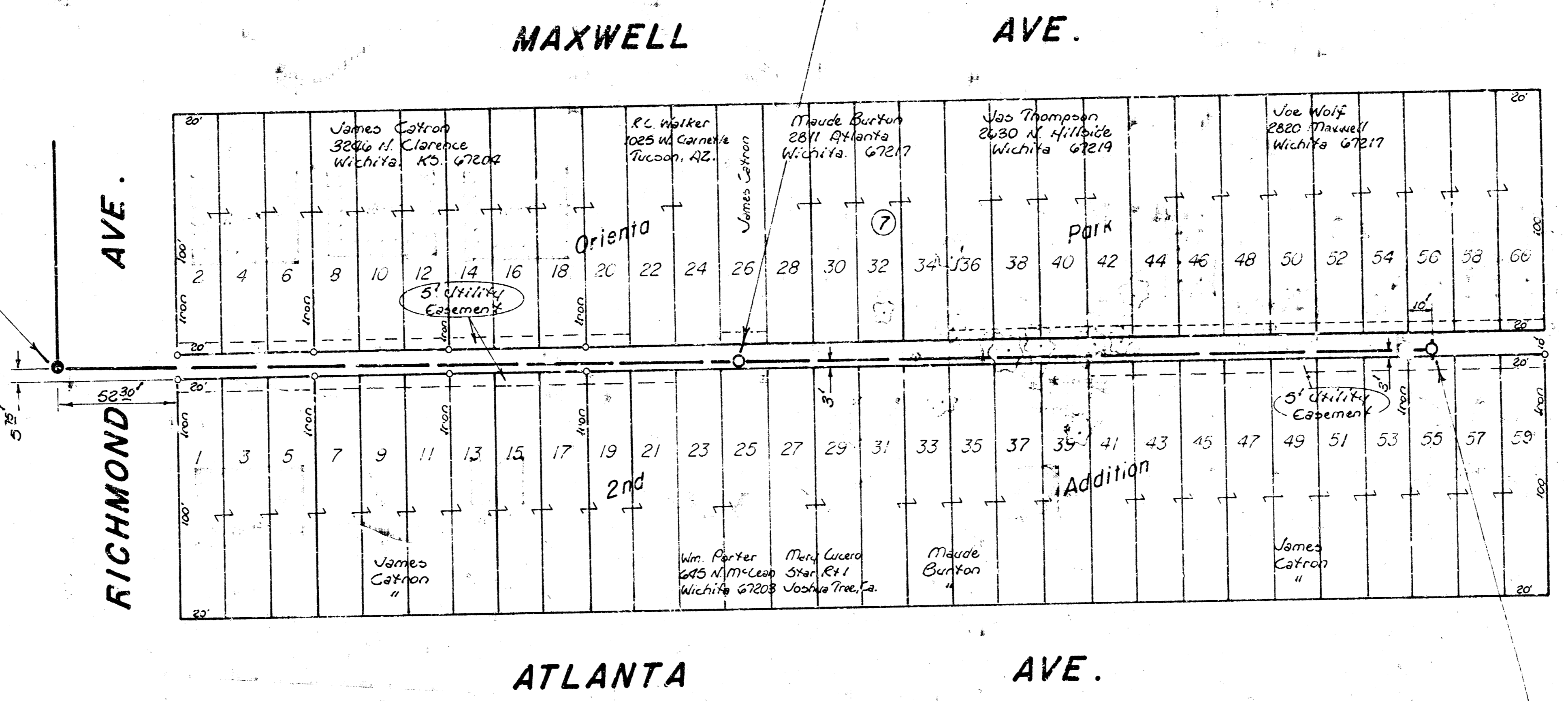
B.M. 101.77 RR Spk. E.R. PP N. Side Maxwell 50' E. of E.C. Richmond
 in front of Ho. # 2038 Maxwell.
 B.M. 102.89 R.R. Spk. PP NE Cor. Maxwell & St. Paul.

NOTE: CONTRACTOR SHALL MOUND EXCESS EXCAVATED MATERIAL OVER SEWER PIPE TO MAINTAIN A MINIMUM COVER OF 30" WHERE NECESSARY.

17700
 060380
 041303

Sta. 0+00
 Existing M.H.
 Remove Existing Stub.

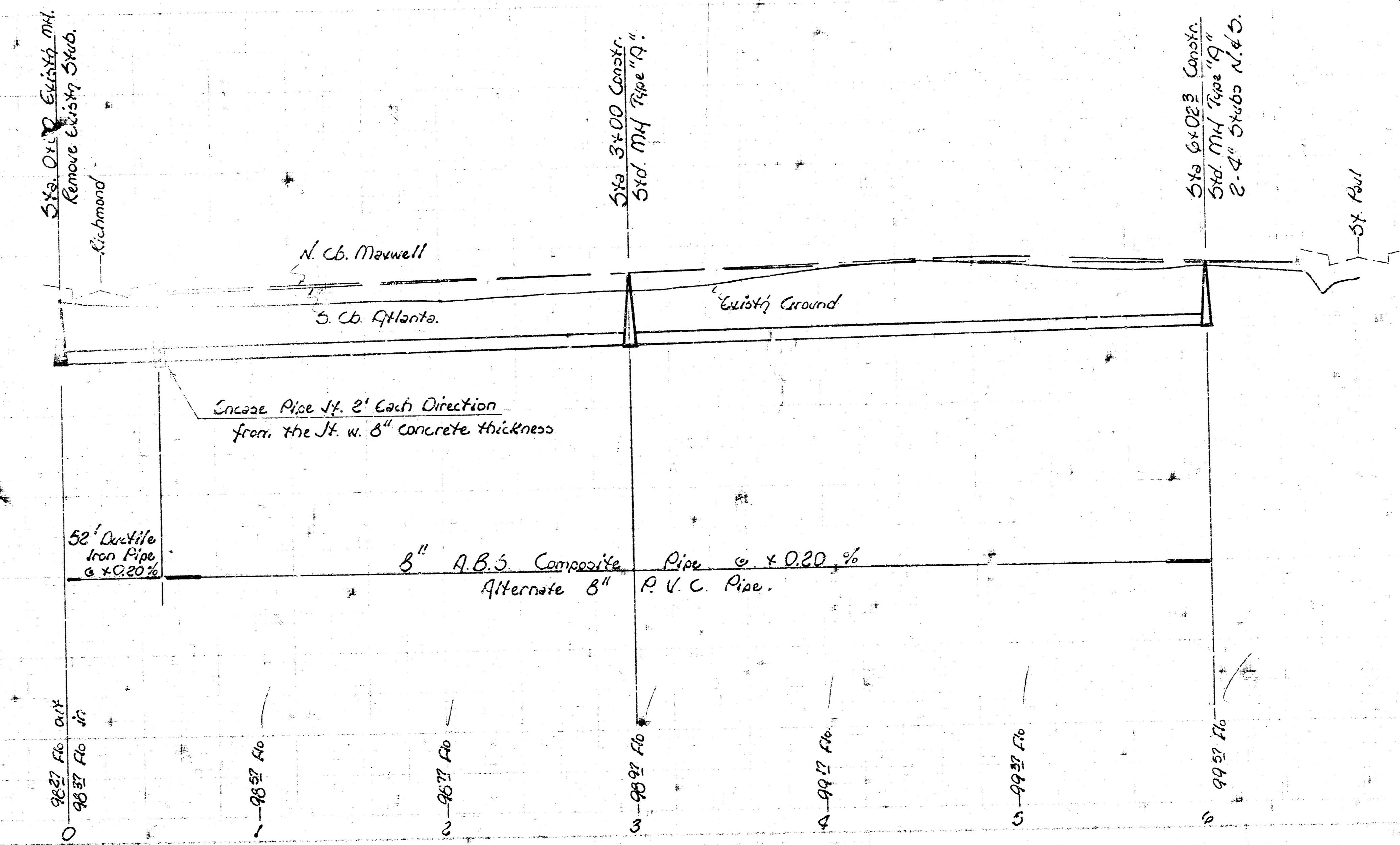
Sta. 3+00, Constr.
 Std. M.H. Type "A"



Sta. 6+02.3 Constr.
 Std. M.H. Type "A"
 2-4" Stubs N. & S.

Scale:
 Plan: 1" = 40'
 Profile: 1" = 40'
 1" = 5'

100
 95
 90



LAT. 8, MAIN 18, S.S. 22
CITY OF WICHITA, KS.
 R. W. Linn — City Engineer
 Project No. 468-76-245-80124-000-000-001
 Date