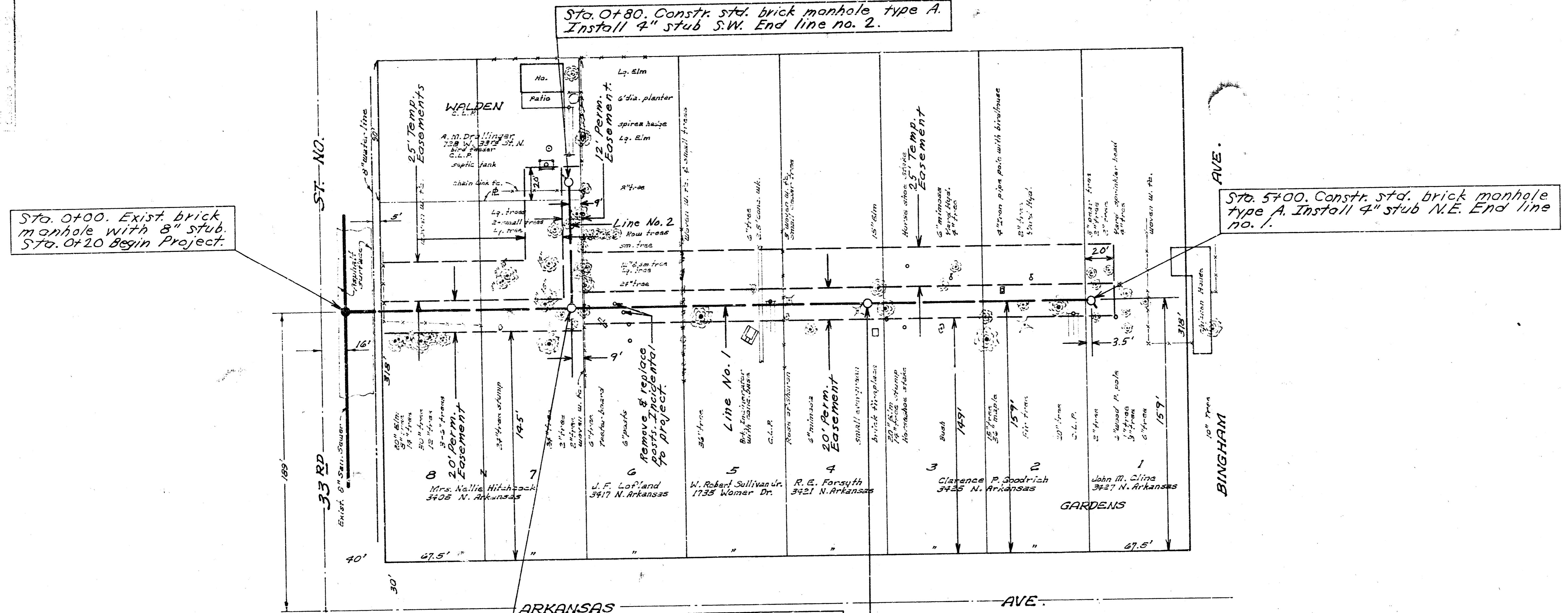
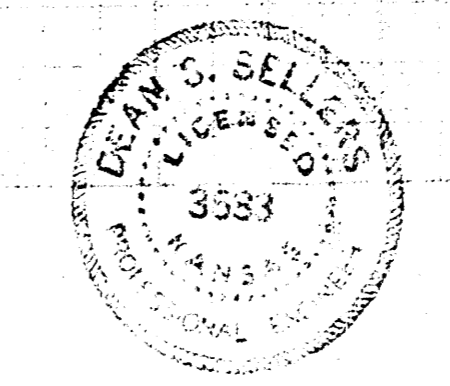
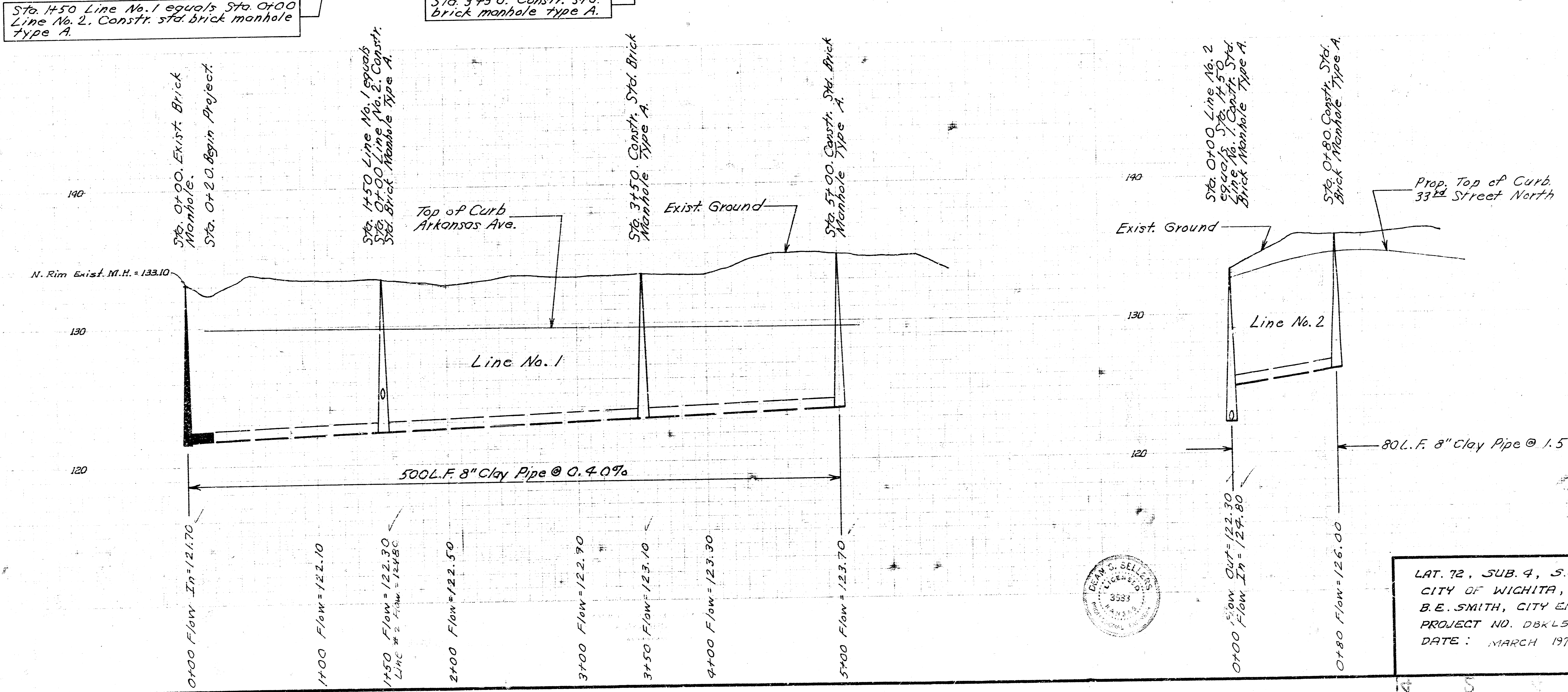


W.D. C. Pulley, Inc. DEP-11
D. G. Gwinn

B.M. 134.51 S.E. Cor. Conc. walk of Bldg. @ N.W. Cor. 30th & Arkansas
B.M. 131.23 Step bench S. side P. Pole S.W. cor. 32nd & Masscot



Plan Scale 1"=90'
Profile Scale 1"=90' Hor.
1"=4' Vert.



LAT. 72, SUB. 4, S.S. NO. 23
CITY OF WICHITA, KANSAS
B.E. SMITH, CITY ENGINEER
PROJECT NO. DBK 569050
DATE: MARCH 1971