

REMOVAL OF SANITARY SEWER & SWS EXTENSION
 LOTS 3 - 18, BEN BAILEY'S ADDITION
 CITY OF WICHITA
 MICHAEL E. LINDEBAK, P.E. : CITY ENGINEER
 PRIVATE PROJECT NO.: 659PPS (607861)

PROPOSED SITE IMPROVEMENTS PROVIDED BY:

AutoZone
 STORE DEVELOPMENT PHONE (901) 495-8719
 60 MADISON AVENUE MEMPHIS, TENNESSEE 38103 FAX (901) 495-8901

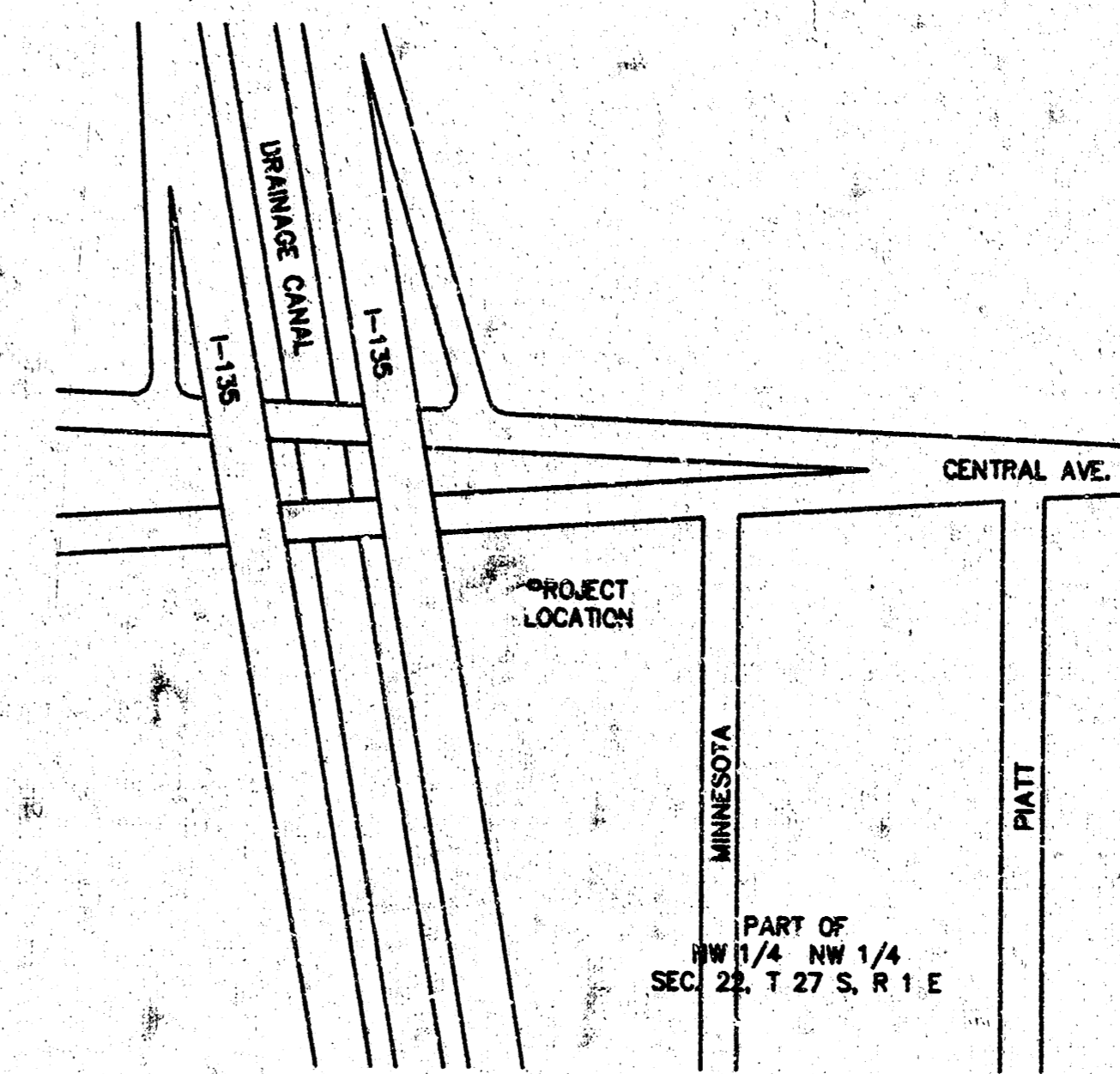
TOPOGRAPHIC & BOUNDARY SURVEY PERFORMED BY:
COOK, FLATT & STROBEL

SEE SURVEY FOR COMPLETE LEGAL DESCRIPTION INFORMATION.

BENCHMARK

SQUARE CUT TOP OF CURB AT E. END OF
 ISLAND CURB AT INTERSECTION OF CENTRAL
 AND MINNESOTA. ELEV. 112.03

ELEVATION DATUM SHOWN IS CITY OF WICHITA DATUM.
 ELEVATIONS SHOWN PLUS 1187.4 = SEA LEVEL DATUM.



LOCATION MAP
 NOT TO SCALE

*San. Sew Booked
 4-4-97
 JKB
 As Per Plan*

*Booked
 5-6-97
 MCB
 D-338*

GENERAL CONSTRUCTION NOTES

1. CONSTRUCTION METHODS, CONSTRUCTION MATERIALS AND TESTING PROCEDURES SHALL CONFORM TO THE CITY OF WICHITA'S TECHNICAL SPECIFICATIONS FOR PUBLIC IMPROVEMENTS.
2. THE CONTRACTOR SHALL PROVIDE PERFORMANCE AND MAINTENANCE BONDS AS REQUIRED BY THE CITY OF WICHITA.
3. THE CONTRACTOR SHALL SECURE THE SERVICES OF AN ENGINEERING FIRM TO PROVIDE CONSTRUCTION STAKING AND INSPECTION AND VACUUM TESTING OF THE COMPLETED SEWER SYSTEM.
4. THE CONTRACTOR SHALL VERIFY LOCATION AND ELEVATION OF THE EXISTING SANITARY SEWER MAIN PRIOR TO BEGINNING CONSTRUCTION.
5. THE CONTRACTOR SHALL BE RESPONSIBLE FOR ANY DAMAGE AND SUBSEQUENT REPAIR OF UNDERGROUND UTILITIES OR PERTINENT OBSTRUCTIONS DURING THE COURSE OF HIS OR HER OPERATIONS ON THE CONSTRUCTION SITE OR THE IMMEDIATE AREA. CALL KANSAS ONE-CALL (1-800-344-7233) PRIOR TO BEGINNING CONSTRUCTION.
6. ALL DISTURBED AREAS SHALL BE SEEDED AND RESTORED TO EXISTING CONDITION.

APPROVED AS NOTED

By CITY ENGINEER OF WICHITA

Sanitary Sewers VRH 11/20/96

Storm Sewers VRH 11/20/96

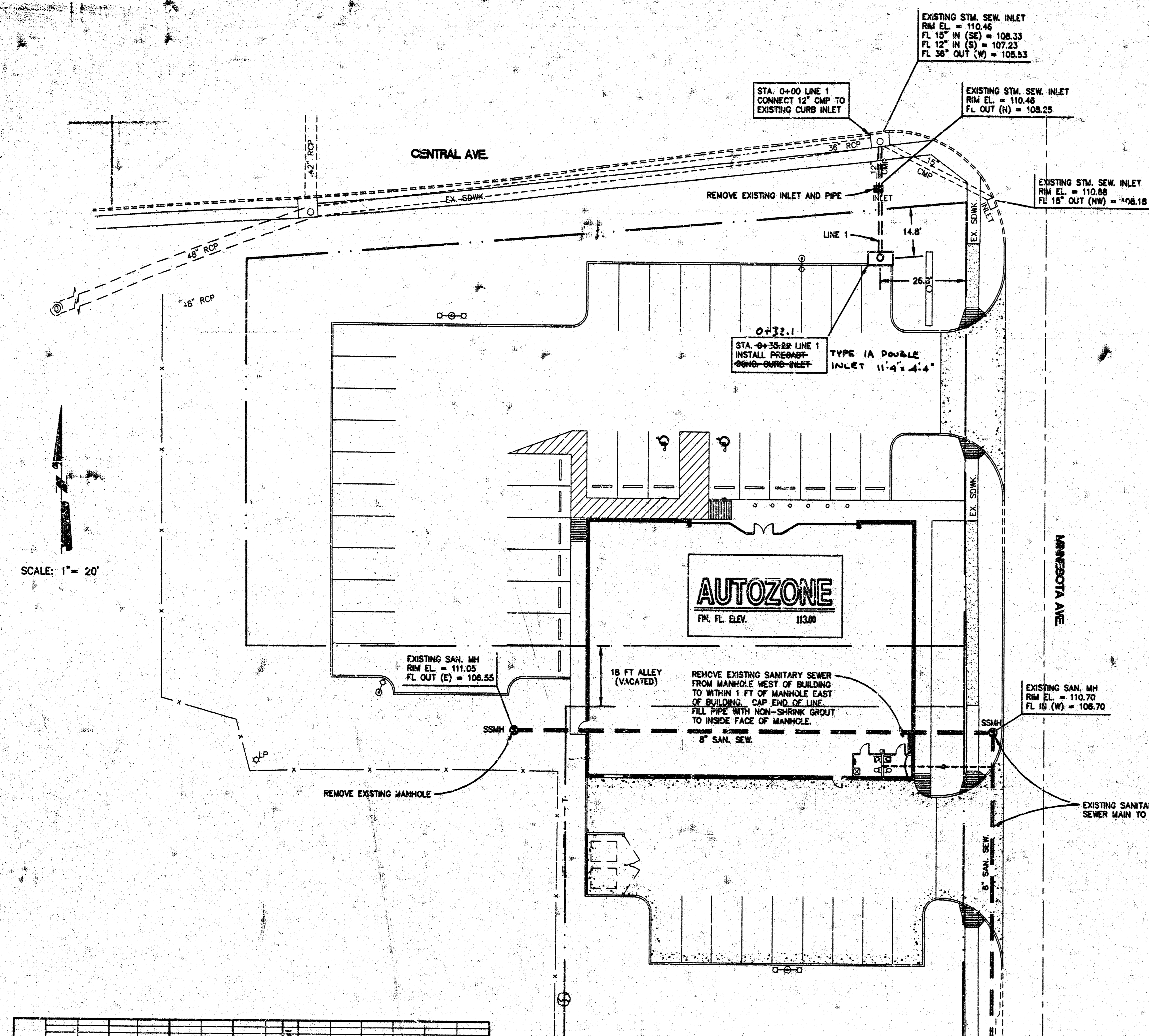
Driveway Approaches _____

Water Mains _____

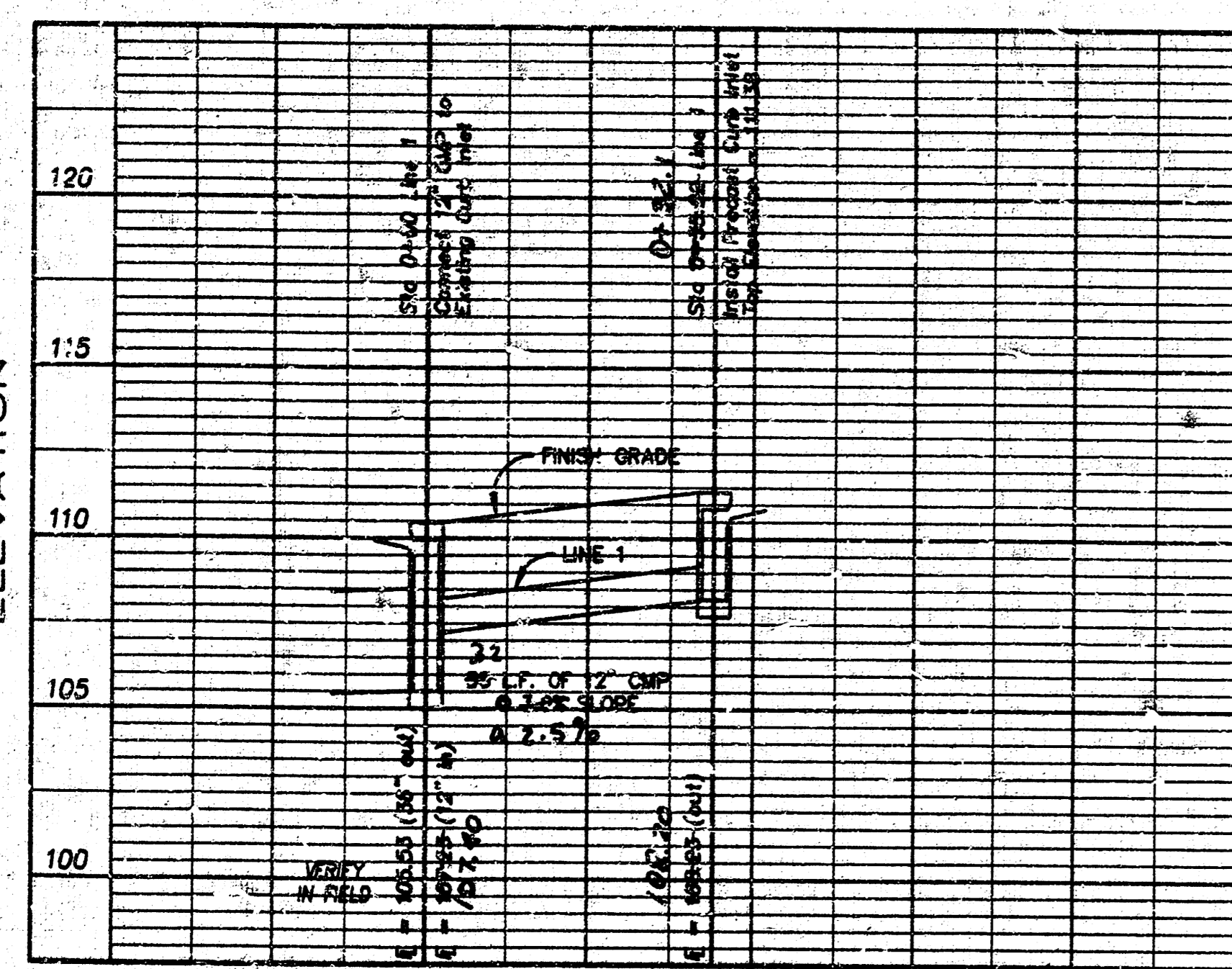
Paving _____

NOTE TO CONTRACTOR

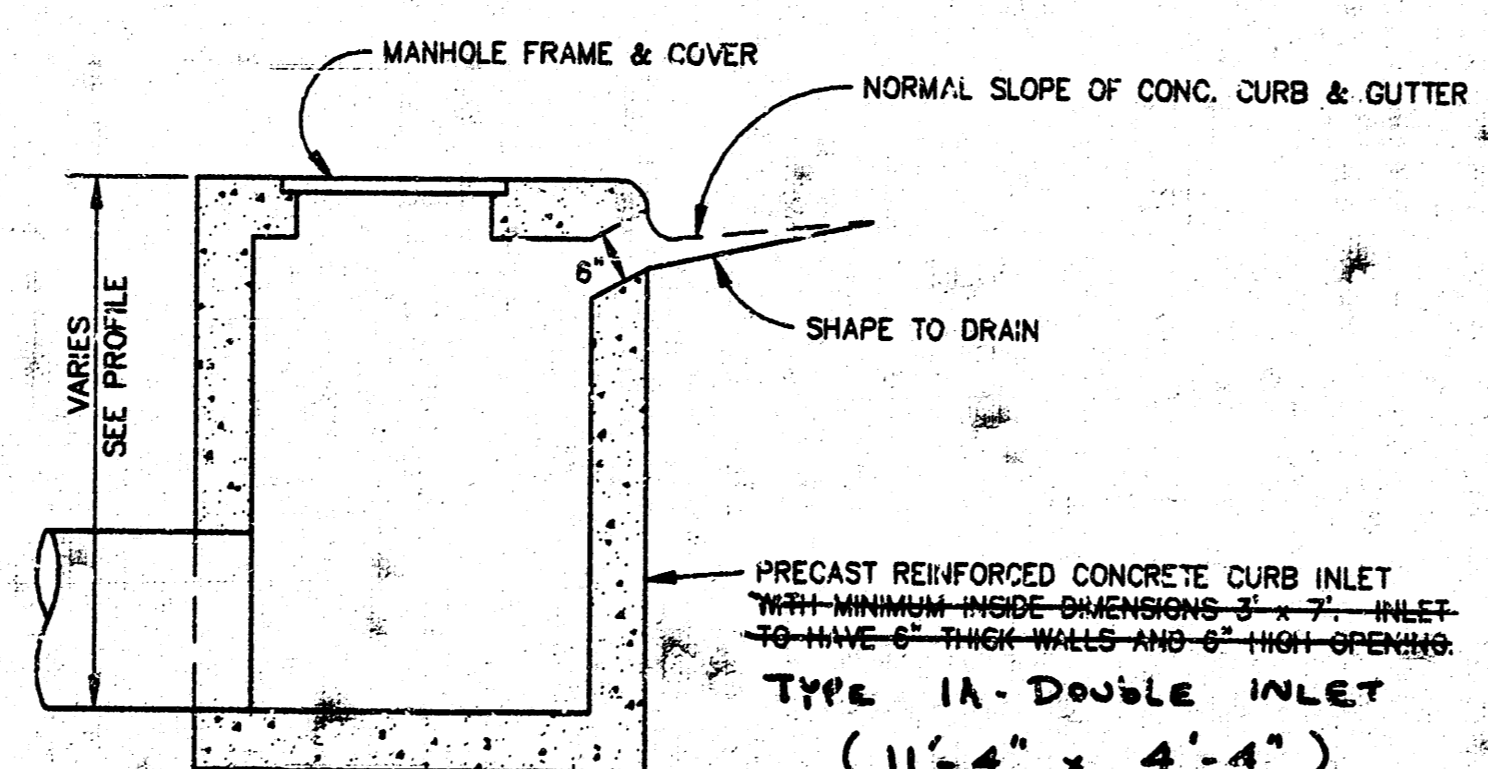
INSPECTION AND TESTING FOR THIS PROJECT IS TO BE PROVIDED BY A LICENSED CONSULTING ENGINEERING FIRM UNDER CONTRACT WITH THE OWNER/DEVELOPER. SAID INSPECTION TO BE IN ACCORDANCE WITH THE CITY OF WICHITA STANDARD CONSTRUCTION ENGINEERING PRACTICES AND CERTIFIED BY A LICENSED PROFESSIONAL ENGINEER. NO WORK SHALL BE PERFORMED IN DEDICATED EASEMENTS OR THE PUBLIC RIGHT-OF-WAY BY THE CONTRACTOR WITHOUT SUCH INSPECTION NOR SHALL ANY WORK BE COMMENCED IN DEDICATED EASEMENTS OR PUBLIC RIGHT-OF-WAY WITHOUT WRITTEN AUTHORIZATION BY THE CITY ENGINEER.



SCALE: 1" = 20'



DRAINAGE PROFILE
 HOR. SCALE: 1" = 20'
 VERT. SCALE: 1" = 5'

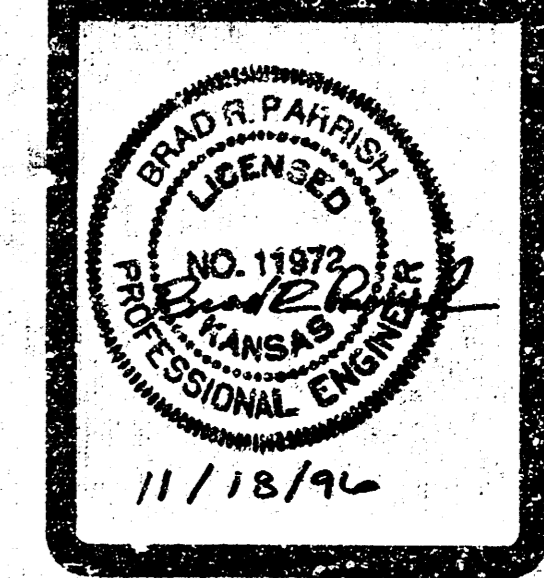


CURB INLET DETAIL
 NTS

REVISIONS	BY
NO. 1 - 11/18/96	BRP

PRIVATE PROJECT - CITY OF WICHITA
 FOR
AUTOZONE
 CENTRAL AND MINNESOTA
 WICHITA, KANSAS

SAN. SEWER & SWS EXTENSION
Palmerton & Parrish, Inc.
 2895 - K East Dr. - Union
 Springfield, MO 65803
 (417) 864-6000



JOB NO.	DATE
068349	10/21/96
DRAWN	CHECKED
KRB	BRP
SCALE	
1" = 20'	
DRAWING NO.	
68349SSW	

C1.1B