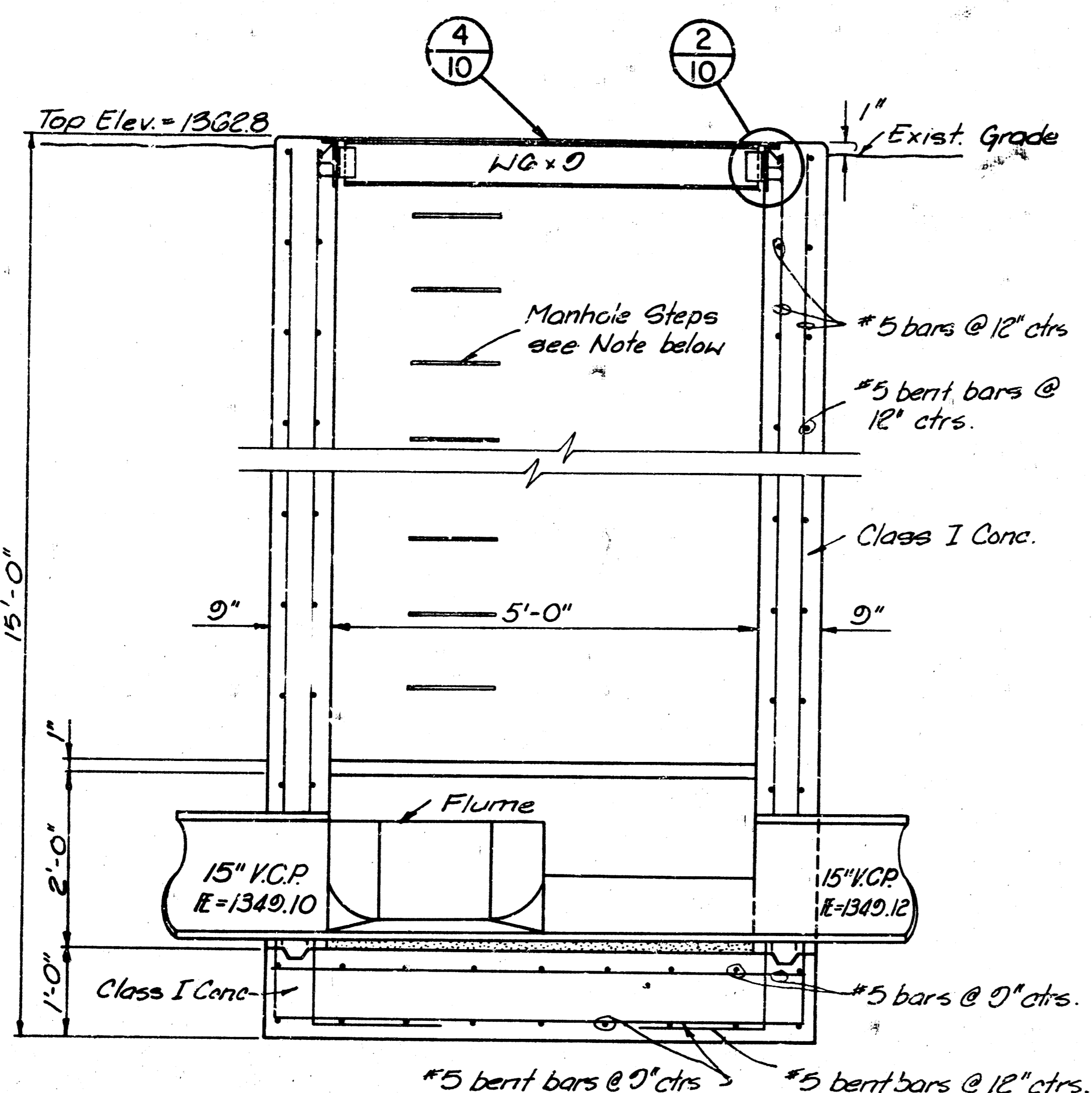
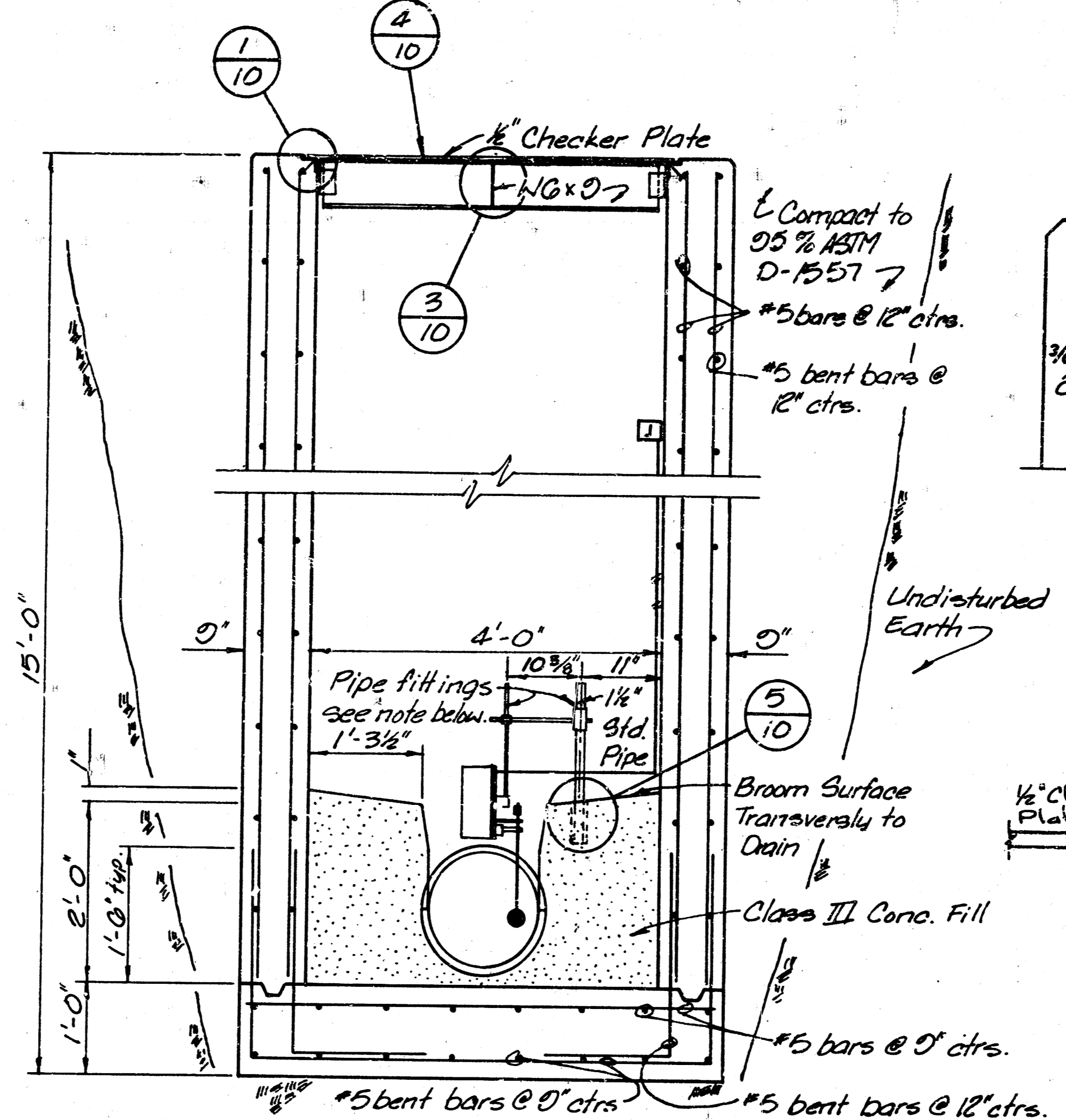




DO NOT TRIM THIS BORDER WHEN PRINTS ARE TO BE BOUND

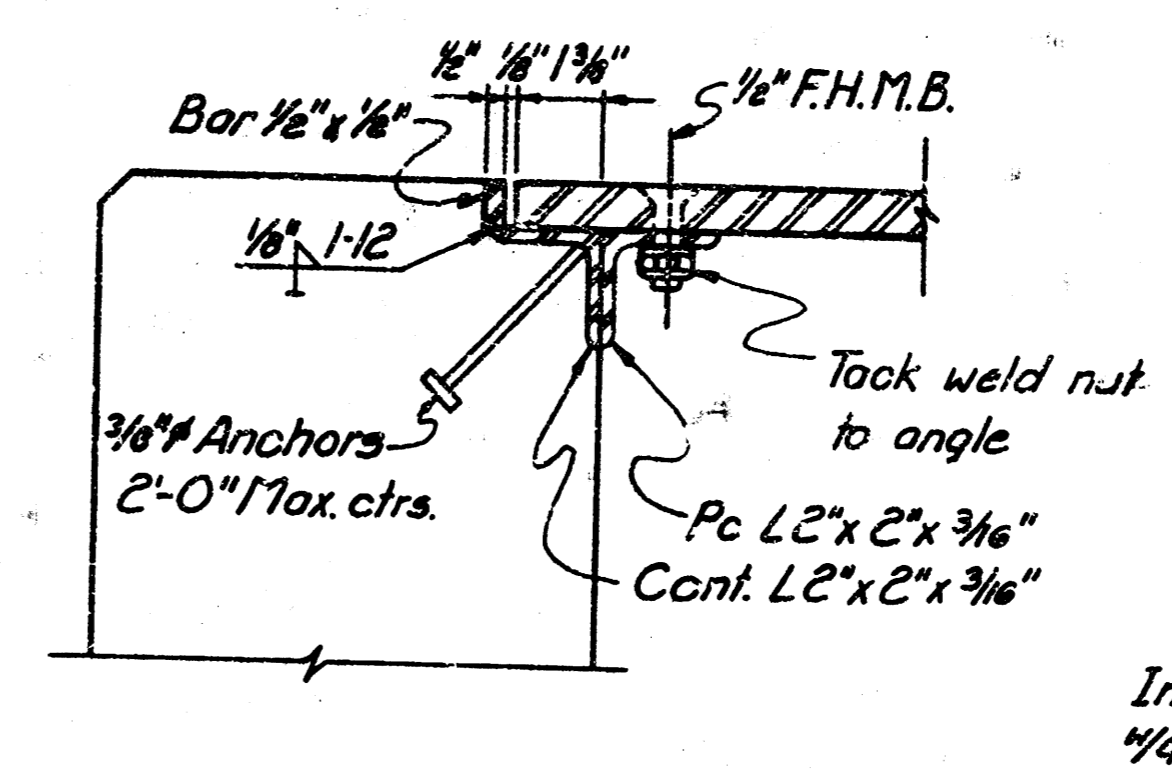


SECTION A  
3/4"=1'-0"

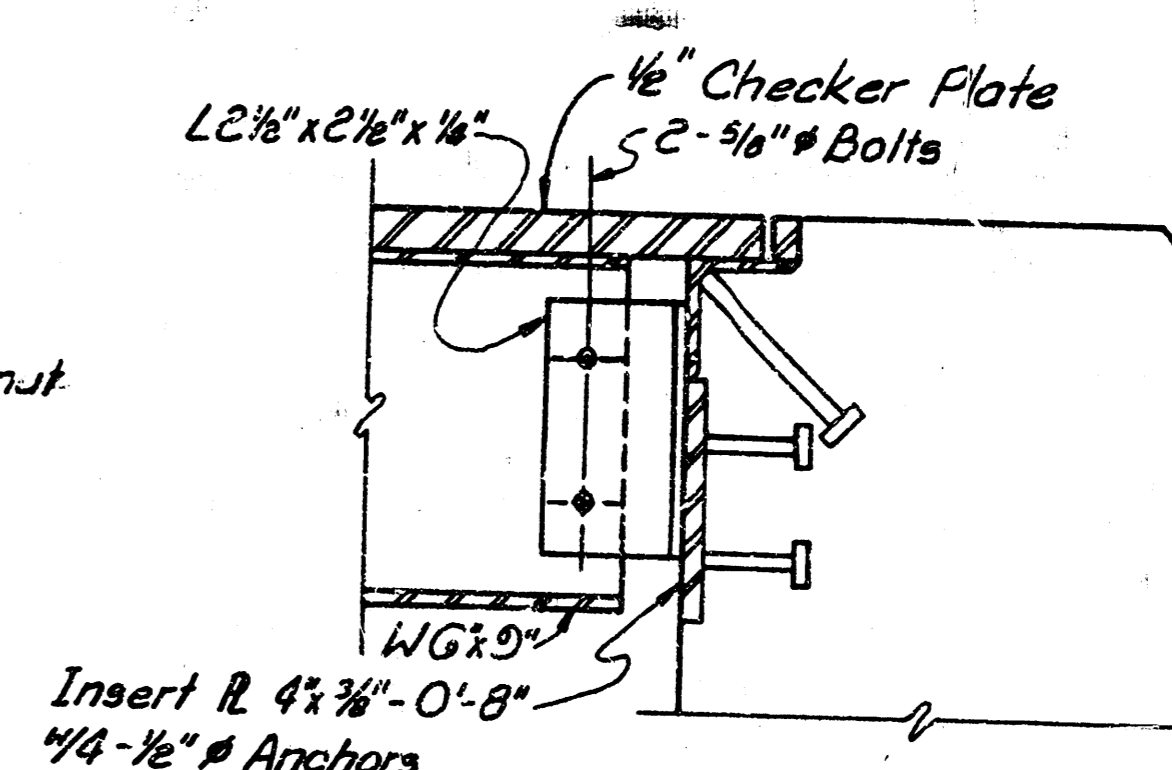


SECTION B  
3/4"=1'-0"

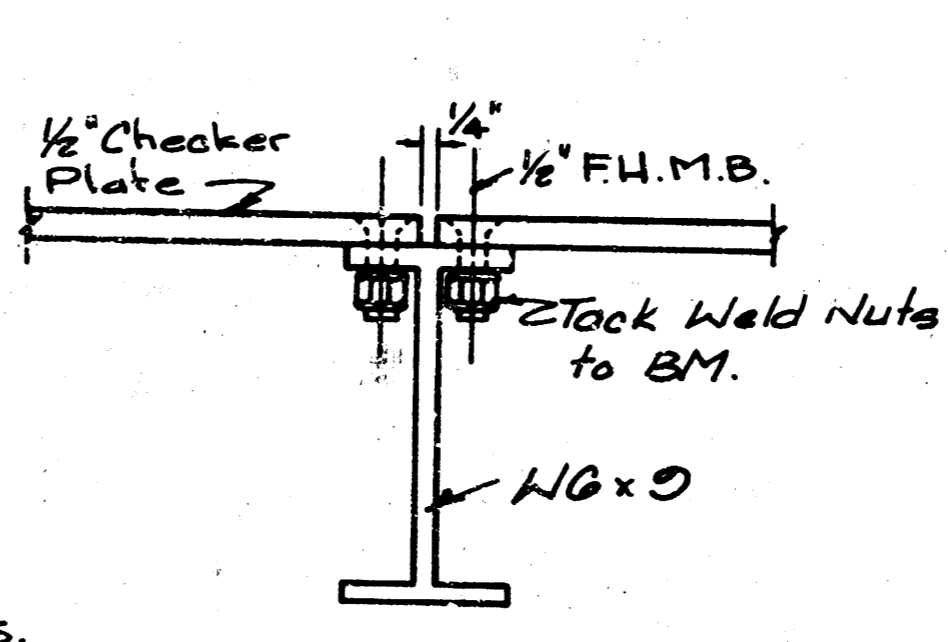
Note: Pipe fittings to allow for vertical & horizontal adjustments or removal of equipment.



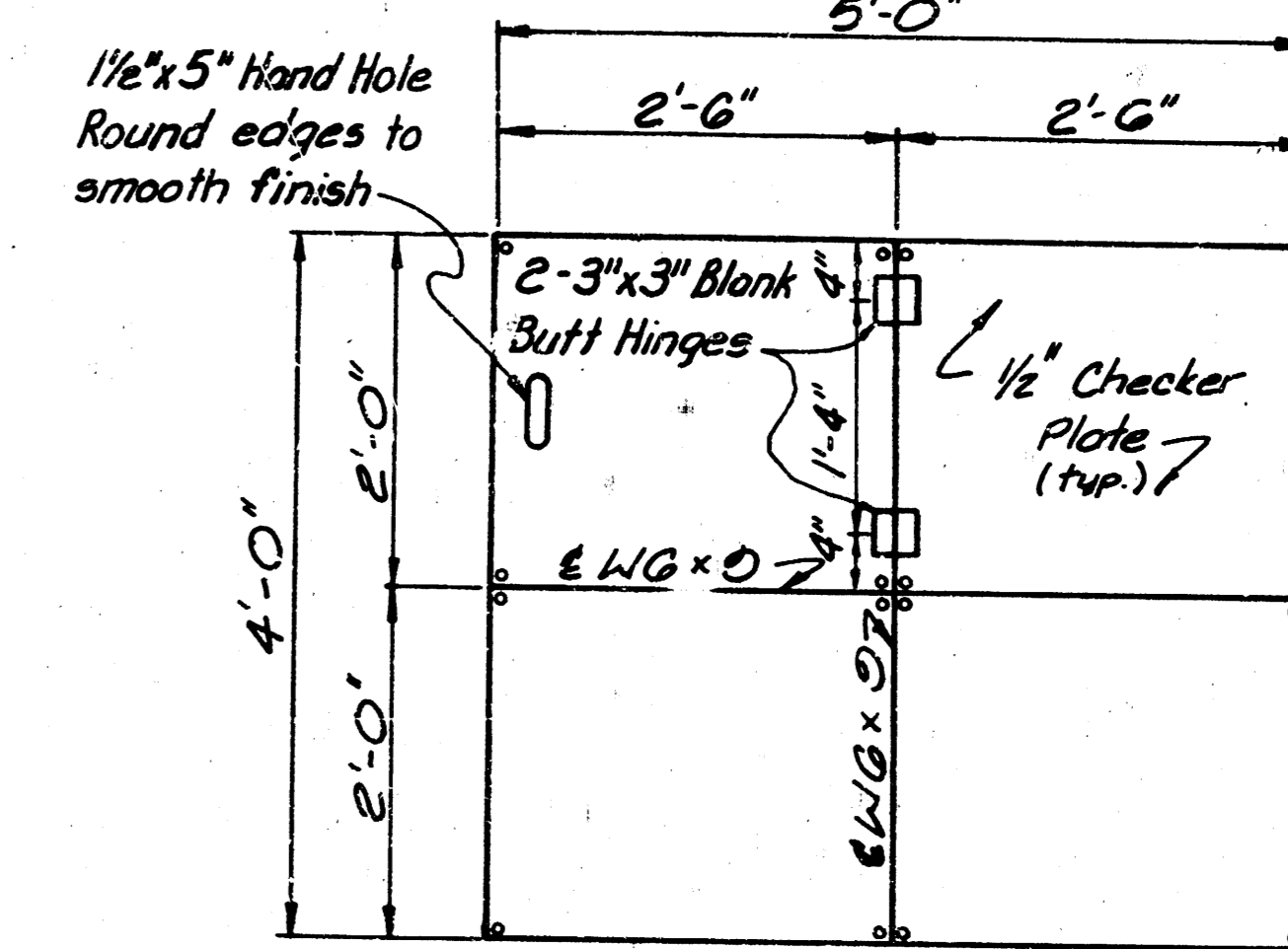
DETAIL 1  
SCALE: 3/4"=1'-0"



DETAIL 2  
SCALE: 3/4"=1'-0"

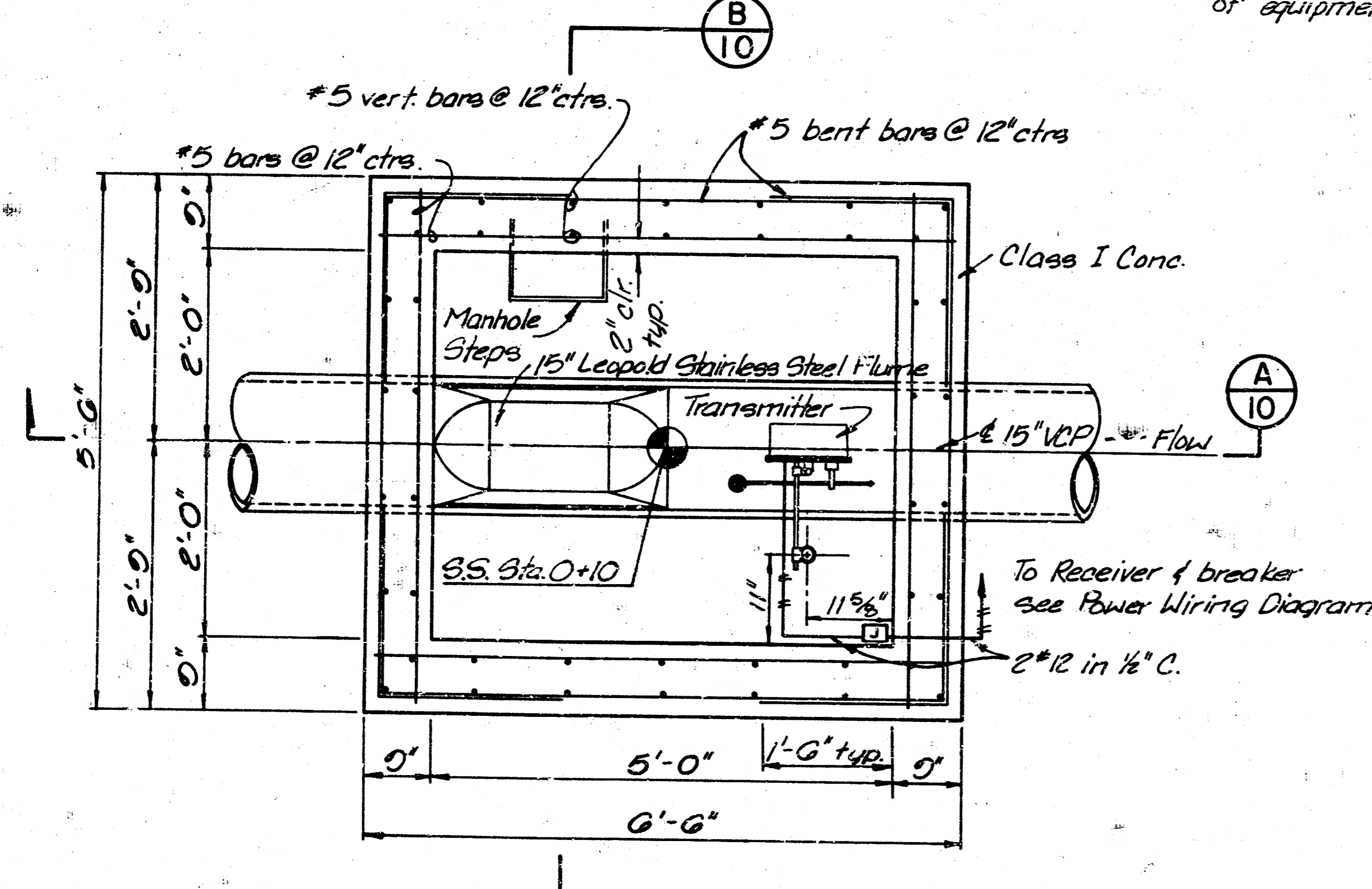


DETAIL 3  
SCALE: 3/4"=1'-0"



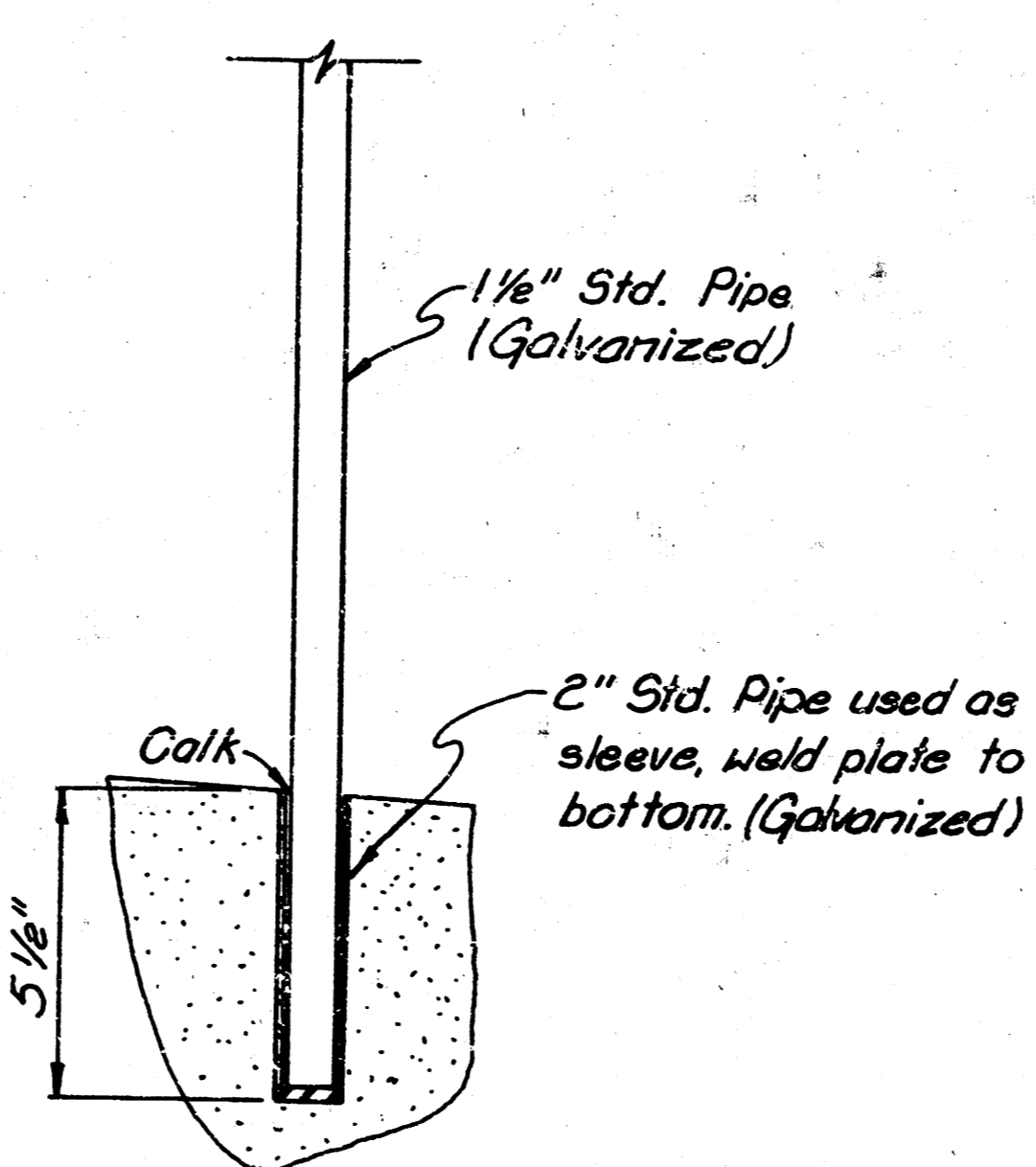
DETAIL 4  
SCALE: 3/4"=1'-0"

Note: All Structural Steel shall be Hot Dipped Galvanized.

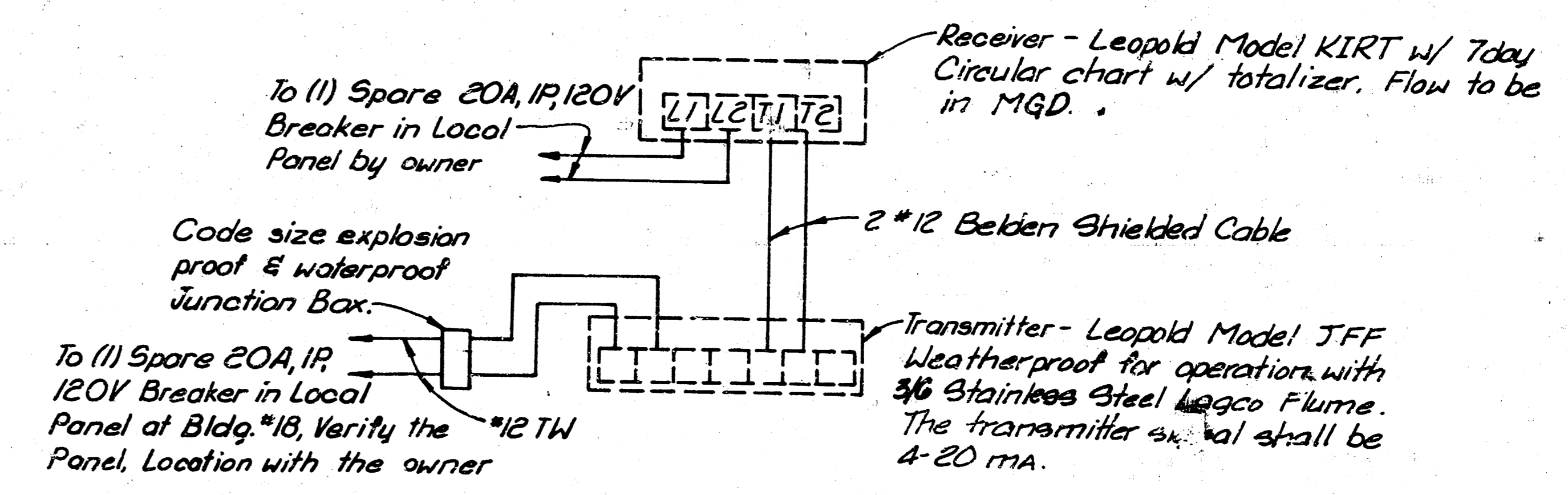


PLAN FLUME STRUCTURE  
3/4"=1'-0"

Note: Manhole steps for the Flume Structure shall be M.A. Industries Model PS-1-PF. M.A. Industries are located in Peach Tree City, GA. Tele. (404) 487-7761, Ext. 511.



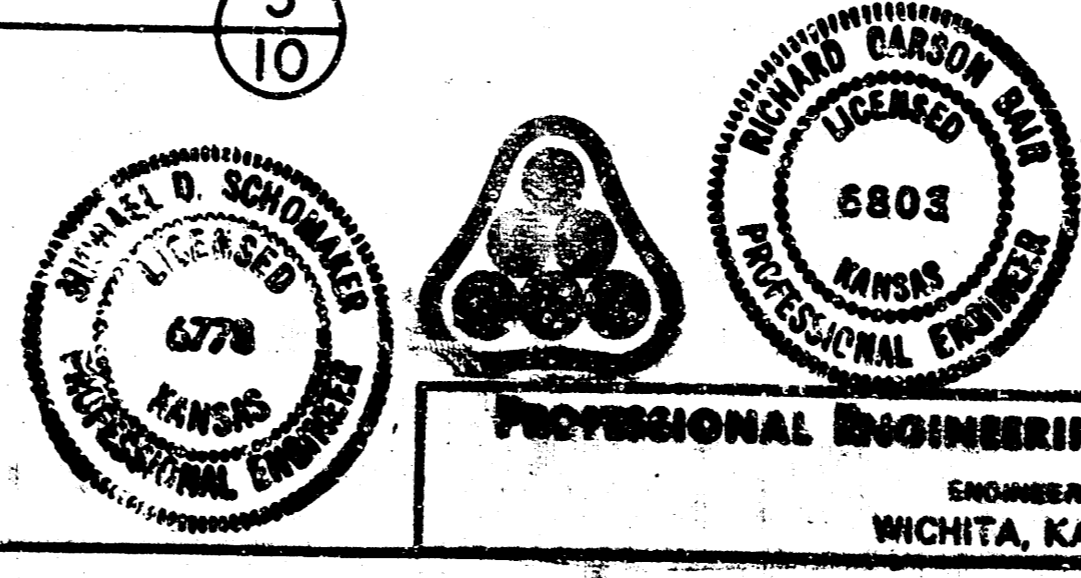
DETAIL 5  
SCALE: 3/4"=1'-0"



TRANSMITTER & RECEIVER POWER WIRING DIAGRAM  
NO SCALE

- ELECTRICAL NOTES:**
1. Provide Explosion Proof Seals in Flume Structure.
  2. Power source need not be the same phase at transmitter & receiver.
  3. U.L. approved 90% PVC Conduit shall be used where feeders are to run underground. Provide Steel Ells and Riser where PVC Conduit is to run above ground. All PVC Conduit shall be provided with separate ground conductor, sized per N.E.C.
  4. The 1/2" Conduit shall be installed along the top rail of the fence and under the gate to Bldg #10. The conduit shall be routed above ground around Bldg #10 parallel with the existing conduit. Installation shall be coordinated and approved by Beech Aircraft prior to installation. The recorder shall be mounted inside Bldg #10 within 10 ft. of the exterior wall at a location provided by the owner.
  5. The transmitter and receiver shall be provided with a one year warranty & one year supply of ink & charts. One day start up service shall be provided by the equipment manufacturer to calibrate and start up the transmitter & receiver.

DATE	NATURE OF REVISION	BY	C.K.D.	APPR.



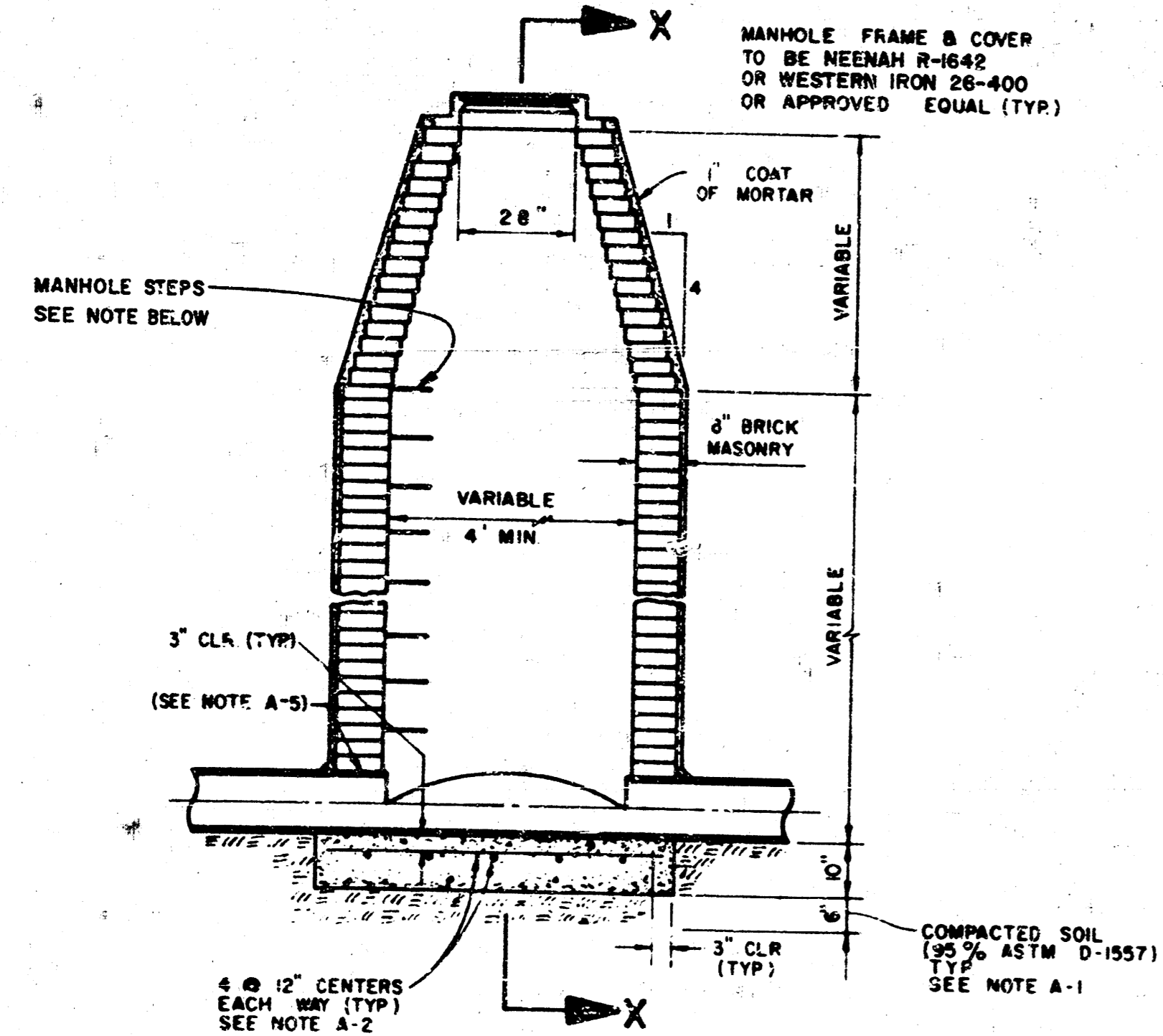
PROFESSIONAL ENGINEERING CONSULTANTS, P.A.  
ENGINEERS  
WICHITA, KANSAS

APPROVED	TITLE	DATE

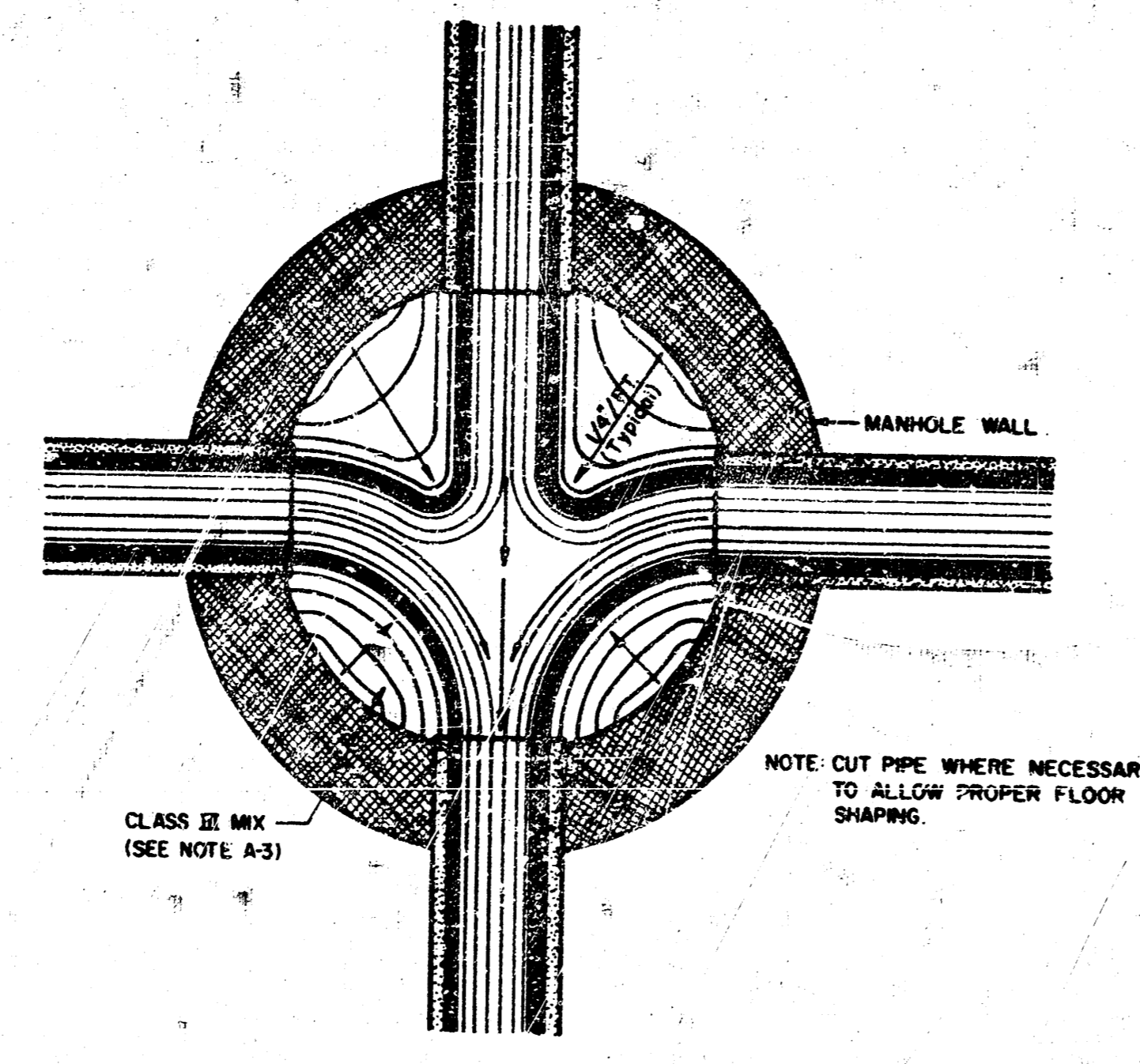
REVISION	DATE	CHECKED	APPROVED

BEECH AIRCRAFT CORP.			
PLANT ENGINEERING DEPT.			
FLOW MONITORING AND SEWER MODIFICATION			
REVISION	DATE	CHECKED	APPROVED
	5/30/80		
SCALE	No. DO-312G-10		

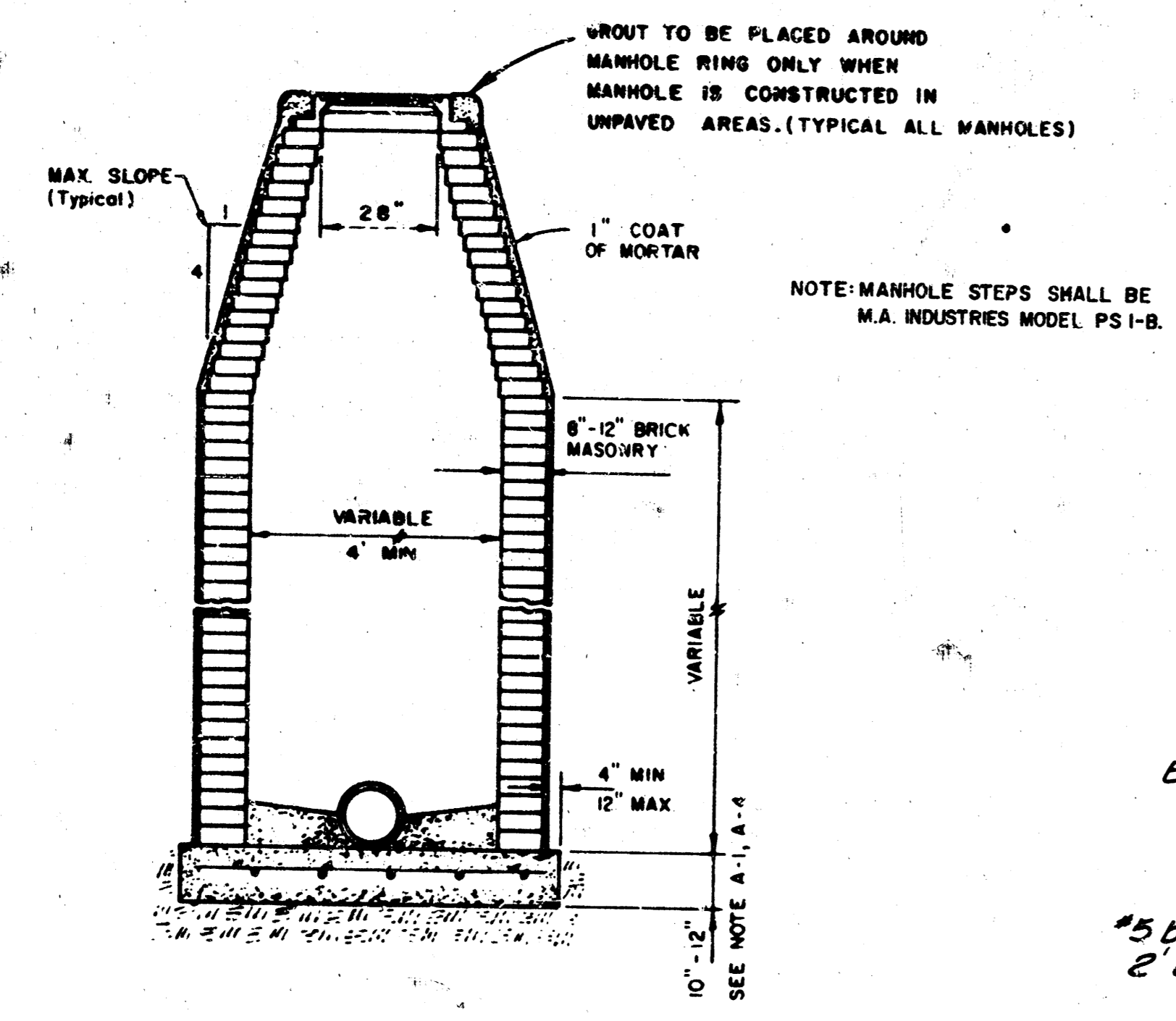
DO NOT TRIM THIS BORDER WHEN PRINTS ARE TO BE BOUND



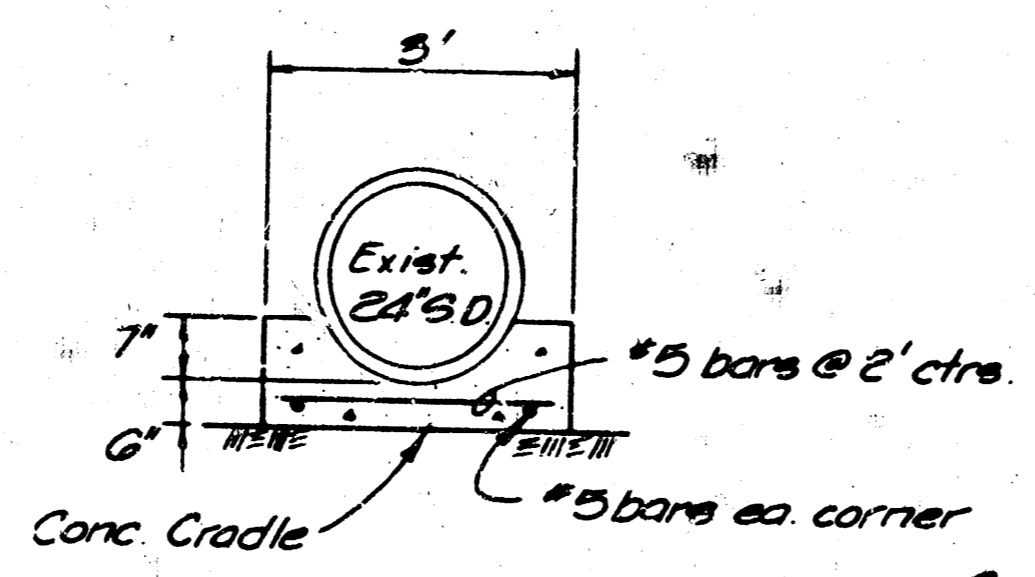
STANDARD MANHOLE TYPE A



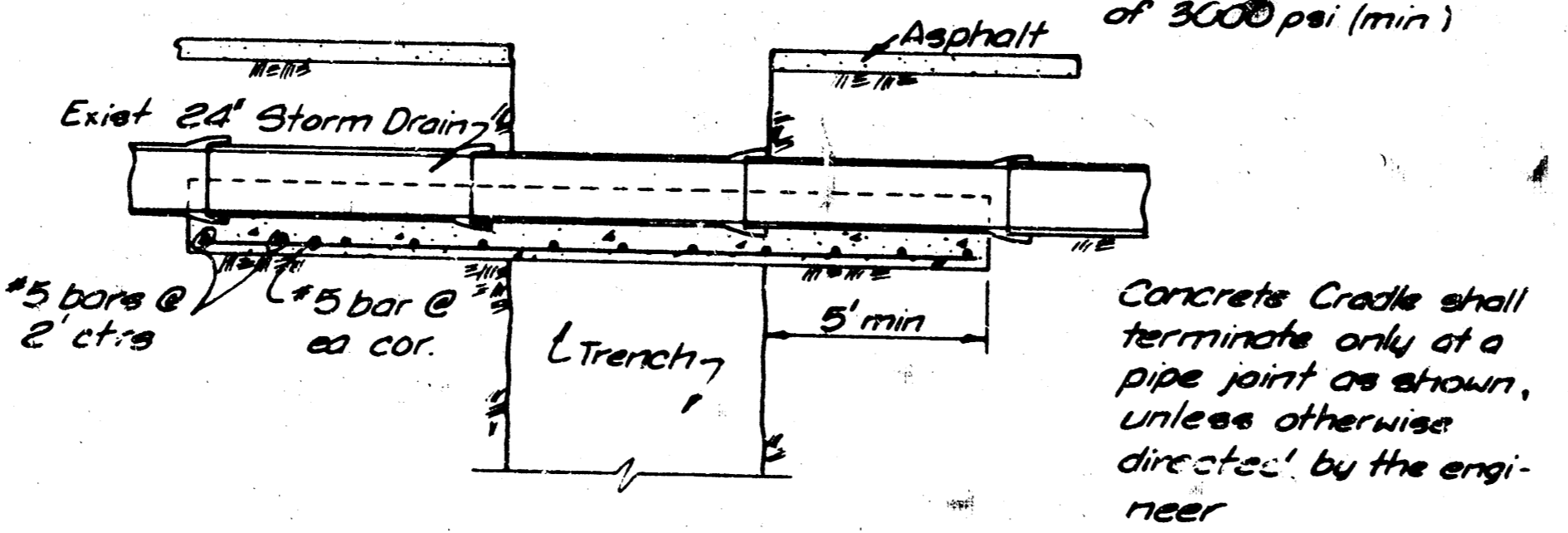
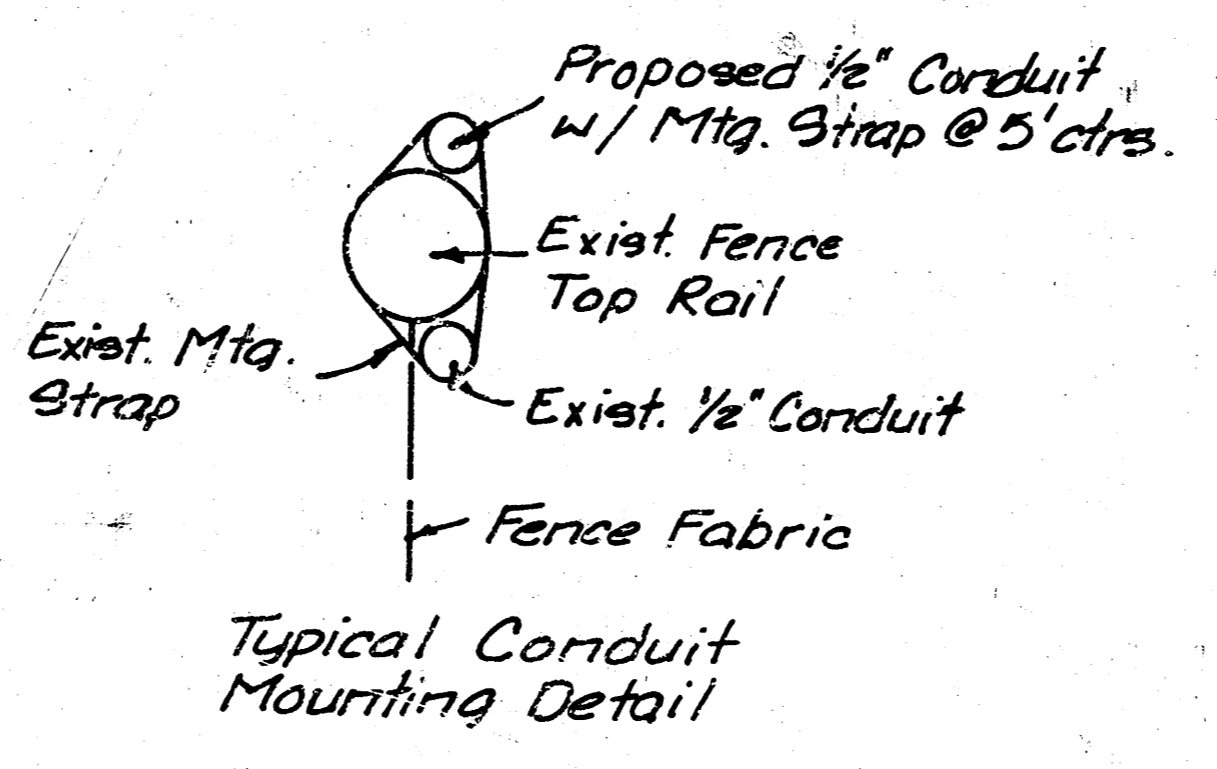
TYPICAL MANHOLE FLOOR SHAPING



SECTION X

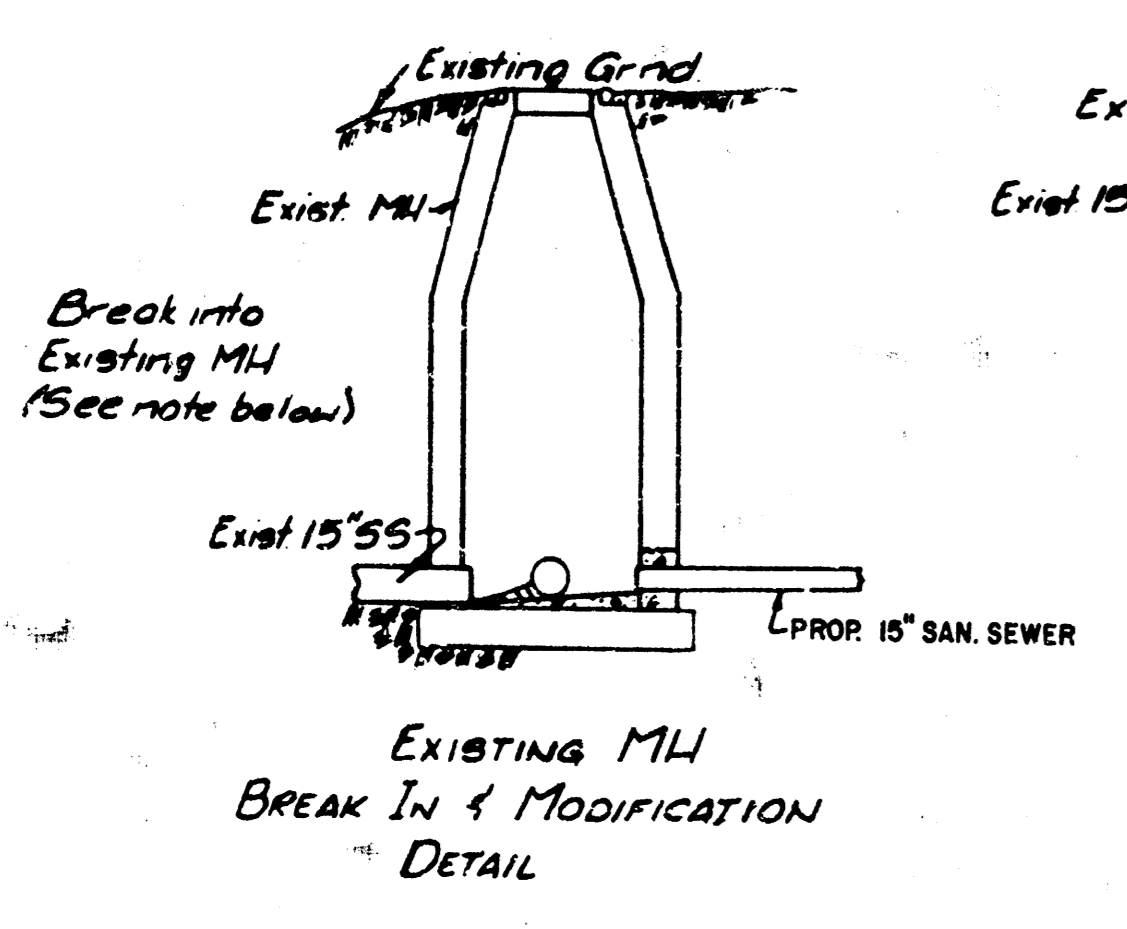


CONCRETE CRADLE DETAIL

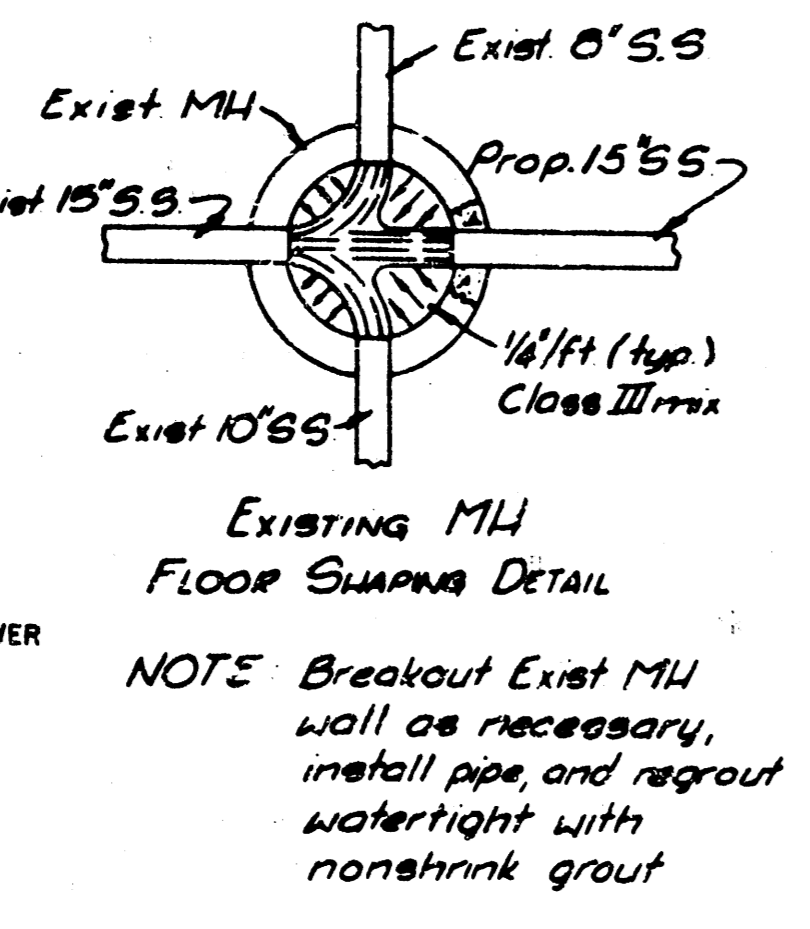


Concrete for Cradle shall be Class A and shall have a 28-day compressive strength of 3000 psi (min).

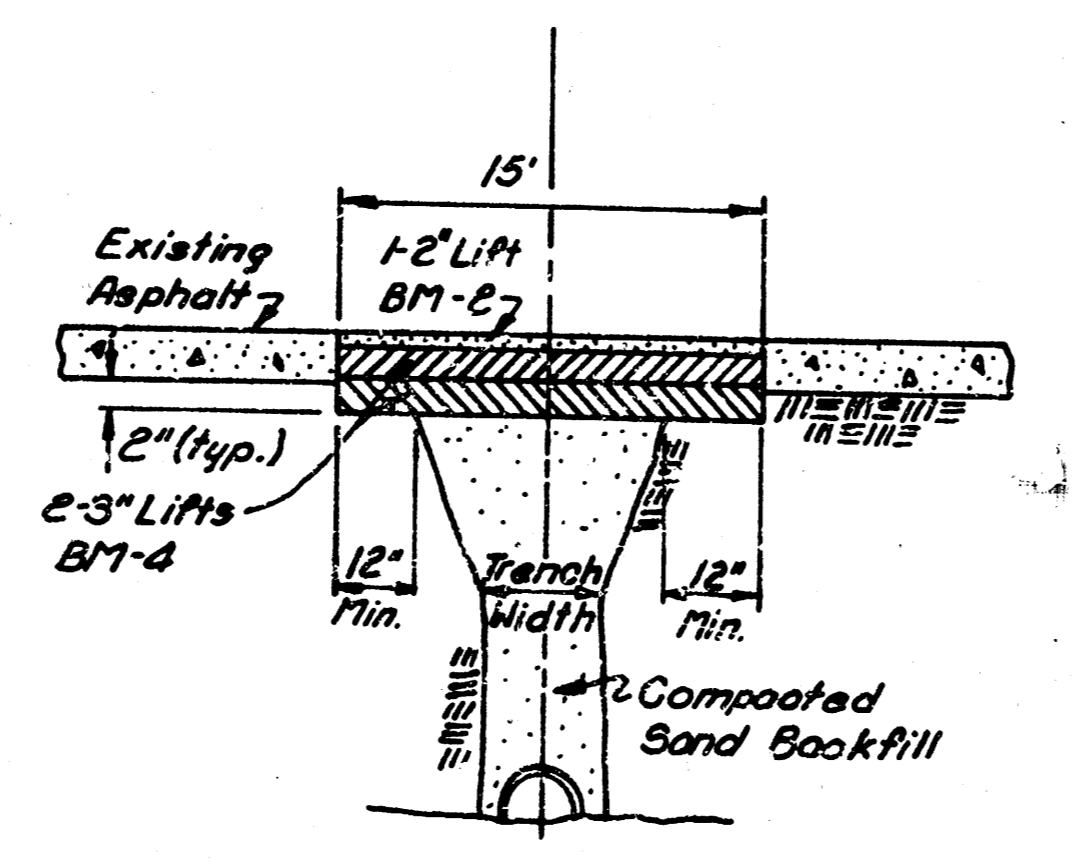
Concrete Cradle shall terminate only at a pipe joint as shown, unless otherwise directed by the engineer.



EXISTING MH BREAK IN & MODIFICATION DETAIL



NOTE: Breakout Exist. MH wall as necessary, install pipe, and regrout watertight with nonshrink grout.



PARKING LOT REMOVAL & REPLACEMENT

Note: Asphalt pavement removal & replacement shall be considered subsidiary to the 15" VCP installation.

CONSTRUCTION SEQUENCE

- PRIOR TO BEGINNING CONSTRUCTION, THE CONTRACTOR SHALL EXCAVATE FOR MANHOLE NO. 2 AND THE ENGINEER SHALL VERIFY THE FLOW LINE ELEVATION OF THE EXISTING SEWER LINE. THE ENGINEER SHALL MAKE ANY ADJUSTMENTS REQUIRED IN THE FIELD.
- FOLLOWING 1) THE CONTRACTOR SHALL INSTALL MANHOLE NO. 2 AROUND THE EXISTING SANITARY SEWER LINE. THE SEWER PIPE SHALL REMAIN IN PLACE AND NO DIVERSION SHALL BE MADE UNTIL ALL WORK IS COMPLETE.
- THE EXISTING MANHOLE AT STA 0+00 SHALL BE MODIFIED TO ACCOMMODATE THE 15" VCP AND EXTENDED TO THE METER MANHOLE AND TEMPORARILY PLUGGED. (THE PLUG WILL BE REMOVED WHEN ALL WORK IS COMPLETED AND THE CONTRACTOR IS READY TO COMPLETE 4).
- THE 15" PIPE SHALL BE INSTALLED AS CLOSE TO THE MANHOLE AT STA 3+38 AS POSSIBLE WITHOUT DAMAGING THE EXISTING SANITARY SEWER. FINAL CONNECTION TO MANHOLE AT STA. 3+38 SHALL BE COMPLETED ON A SUNDAY WHEN SEWER LINE FLOWS ARE MINIMUM AND THE 10" PIPE CAN BE PLUGGED. COORDINATION FOR FINAL CONNECTION SHALL BE MADE WITH DEECHCRAFT, MR. JAMES BECKETT, FACILITIES ENGINEER, 681-0190.

GENERAL NOTES

- THE CONTRACTOR SHALL CONTAIN HIS OPERATIONS TO PERMIT TRAFFIC THROUGH AND ACROSS CONSTRUCTION NEAR THE ENTRANCE GATE ON WEBB ROAD AT ALL TIMES. THE CONTRACTOR SHALL ERECT MARKING SIGNS, FLASHING LIGHTS, AND BARRICADES TO ENSURE SAFETY.
- THE CONTRACTOR SHALL COORDINATE CONSTRUCTION WITH BEECH AIRCRAFT CORP..
- ALL CONSTRUCTION AND MATERIALS TO COMPLY WITH CITY OF WICHITA SPECIFICATIONS AND STANDARDS.
- ALL FENCE DAMAGED DURING CONSTRUCTION SHALL BE REPAIRED AND REPLACED TO EXISTING CONDITION.
- ALL EXCESS EXCAVATION AND DEBRIS SHALL BE REMOVED FROM THE JOB SITE BY THE CONTRACTOR TO A CITY LANDFILL.
- SAND BACKFILL SHALL COMPLY WITH CITY OF WICHITA STANDARD SPECIFICATIONS AND SHALL BE FLUSHED.
- CLAY BACKFILL SHALL BE CONSOLIDATED TO 95% ASTM 698.
- THE CONTRACTOR WILL BE REQUIRED TO NOTIFY EACH OF THE FOLLOWING UTILITY COMPANIES PRIOR TO THE BEGINNING OF CONSTRUCTION AND SHOULD REQUEST THAT ANY EXISTING LINES BE FLAGGED.  
K.G. & E.  
120 EAST FIRST ST.  
P. O. BOX 208  
WICHITA, KANSAS 67202
- INSPECTION SHALL BE BY BEECH AIRCRAFT CORPORATION AND/OR PROFESSIONAL ENGINEERING CONSULTANTS, P.A.
- ALL BACKFILL FOR MANHOLES SHALL BE EQUIVALENT TO THAT SPECIFIED FOR THE ADJACENT SEWER LINES UNLESS OTHERWISE NOTED AND SHALL BE CONSIDERED SUBSIDIARY TO THE PRICE BID FOR MANHOLES.
- CONCRETE SHALL HAVE A 28 DAY COMPRESSIVE STRENGTH OF 4,000 PSI, 6.5 BAGS CEMENT/CY, 5.5 GAL. WATER/BAG. CONCRETE SHALL BE AIR ENTRAINED (5 TO 8%). AGGREGATE SHALL MEET SOUNDNESS TEST WITH A TOTAL LOSS NOT GREATER THAN 18% BY WEIGHT WHEN TESTED IN ACCORDANCE W/ASTM C88. PERCENTAGE OF WEAR BY LA ABRASION TEST, ASTM C131 SHALL BE LESS THAN 40%, COARSE AGGREGATE TO FINE (COARSE 45-80% RETAINED ON 3/8", FINE 40-75% RETAINED ON NO. 30 SIEVE) SHALL BE SUCH THAT NOT MORE THAN 70% OR LESS THAN 40% WILL PASS THE #4 SIEVE, SLUMP 1 TO 3 INCHES.
- ALL MANHOLES SHALL BE BRICK.

DATE	NATURE OF REVISION	BY	CHK'D	APPR.

PROFESSIONAL ENGINEERING CONSULTANTS, P.A.  
ENGINEERS  
WICHITA, KANSAS

Richard Carson  
LICENSED  
6008  
KANSAS  
PROFESSIONAL ENGINEER

WALTER B. WILKINSON  
LICENSED  
678  
KANSAS  
PROFESSIONAL ENGINEER



BEECH AIRCRAFT CORP.  
PLANT ENGINEERING DEPT.  
FLOW MONITORING AND SEWER MODIFICATION

REVISION:	DATE	CHECKED	APPROVED
	5/30/80		

SCALE: No. 00-3126-11

AVAILABLE FROM THE BEST FILMED COPY

14 5 3 2