

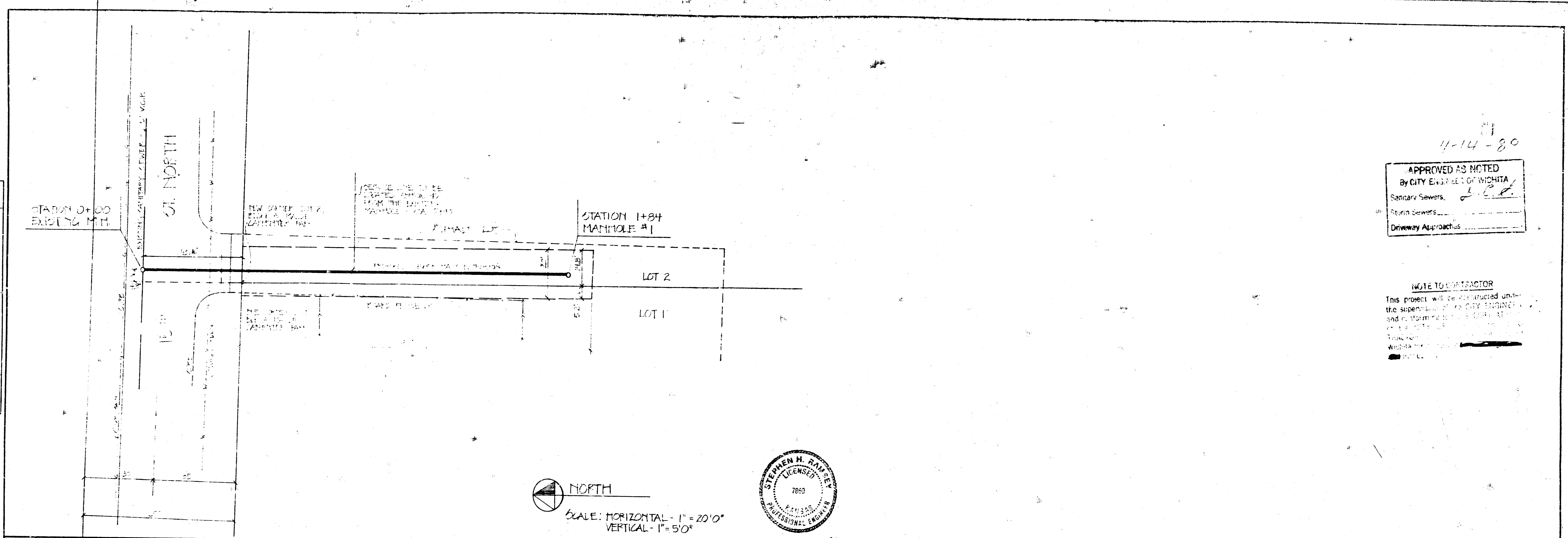
4-14-80

APPROVED AS NOTED
By CITY ENGINEER OF WICHITA
Sewer Sewers
Driveway Approaches

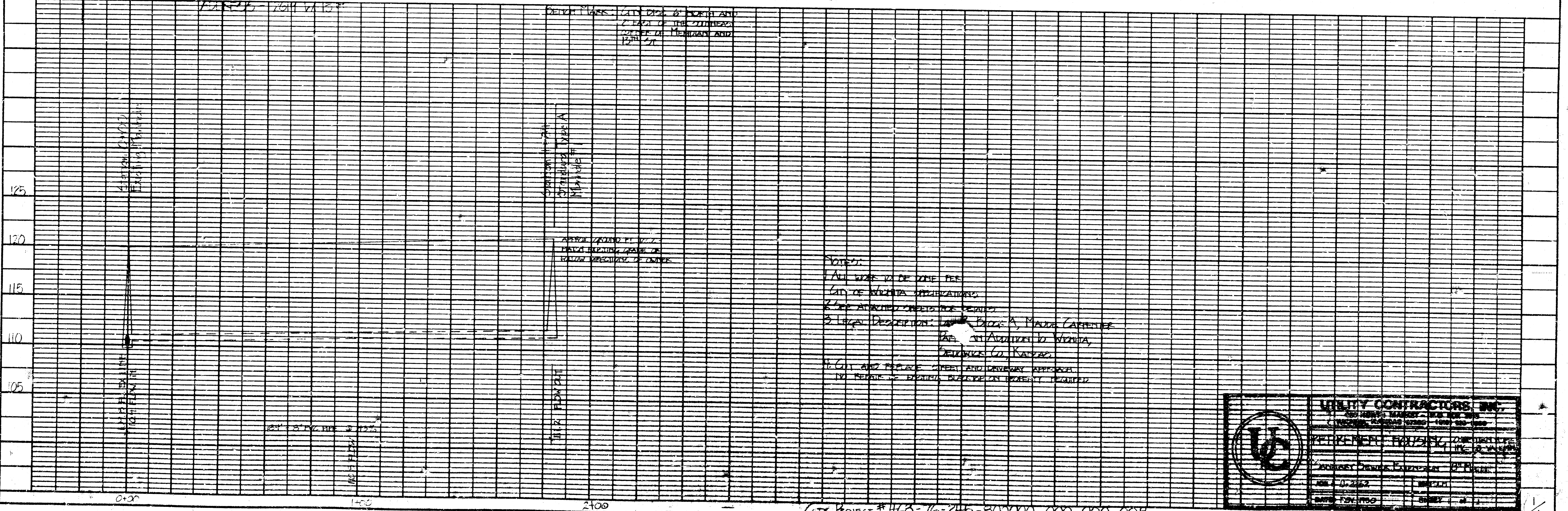
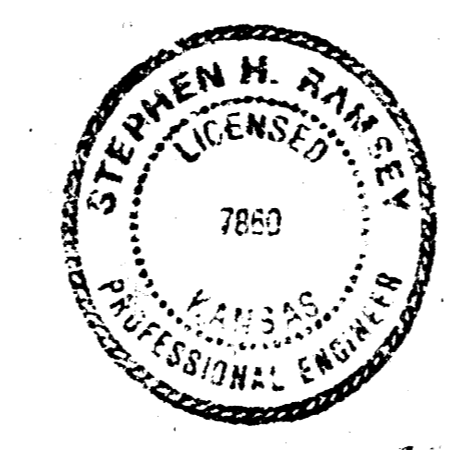
NOTE TO CONTRACTOR
This project will be constructed under
the supervision of the CITY ENGINEER
and in accordance with the SPECIFICATIONS
for the CITY OF WICHITA, KANSAS
Wichita, Kansas

PLAN
DATE
BY
CHECKED
DATE
BY
NO.

PROFILE
DATE
BY
CHECKED
DATE
BY
NO.



NORTH
SCALE: HORIZONTAL - 1" = 20' 0"
VERTICAL - 1" = 5' 0"



NOTES:
1. ALL WORK TO BE DONE PER
CITY OF WICHITA SPECIFICATIONS
2. SEE ATTACHED SPECIFICATIONS
3. LEGAL DESCRIPTION: Block A, Maple-Carewester
Sub. of Addition to Wichita
Development Co., Kansas
4. CITY AND STATE ENGINEER AND DRIVEWAY APPROVAL
TO BE OBTAINED BEFORE ANY WORK IS BEGUN

LIBERTY CONTRACTORS, INC.
100 NORTH MARKET - WICHITA, KANSAS
TELEPHONE: 268-1170
WICHITA, KANSAS 67202
K. R. HANSEN, INC. - WICHITA, KANSAS
ENGINEER
DATE: 4-14-80
SHEET: 1/1