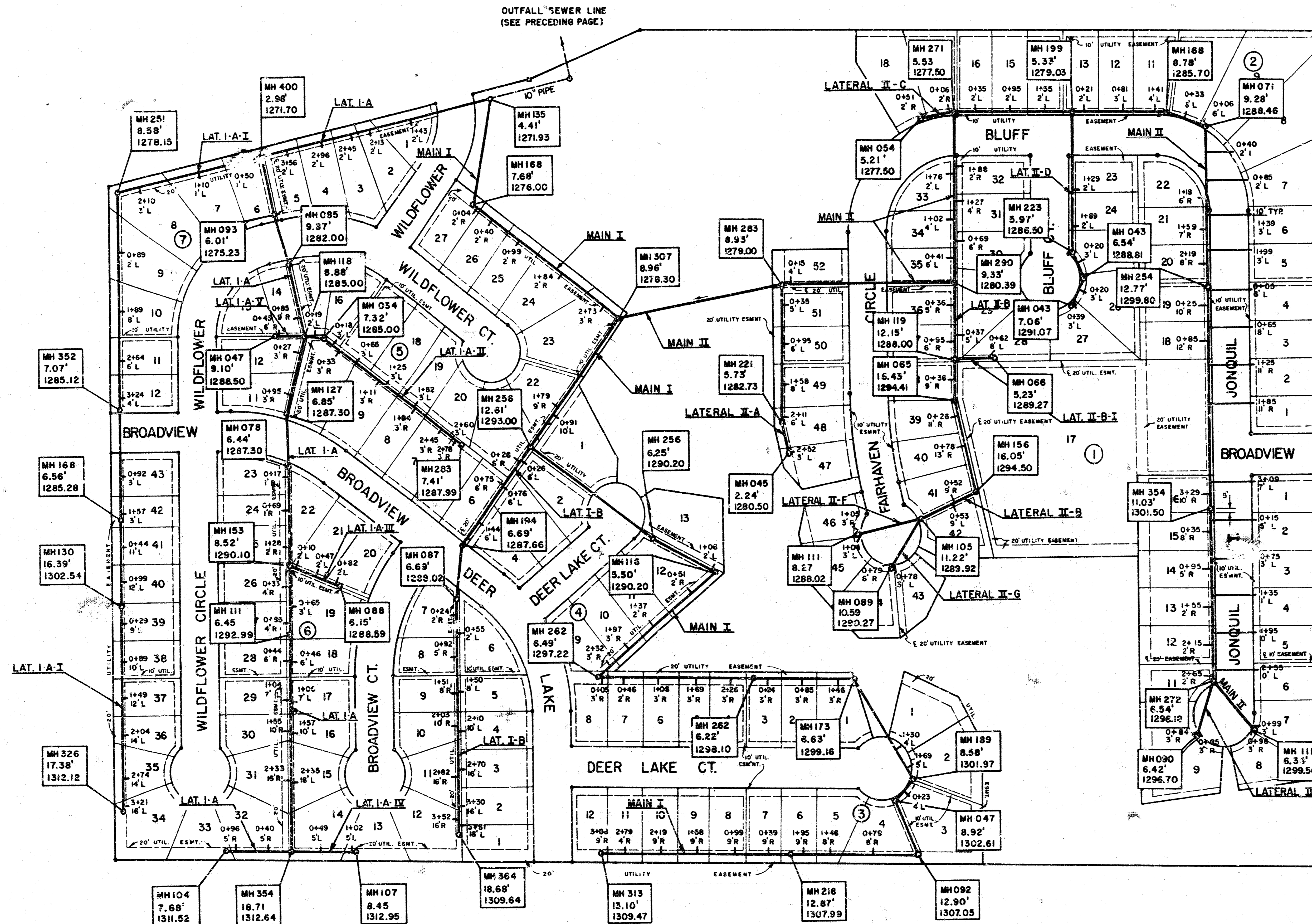


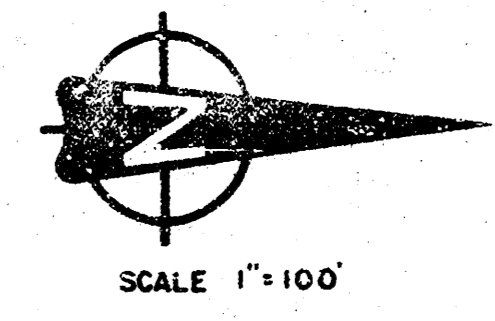
HWY. K-15



N.W. COR., W. 1/2, N.E. 1/4, SEC. 23

47TH STREET SO.

LEGEND



DISTANCE TO PRECEDING DOWNSTREAM MANHOLE
DEPTH - RING TO FLOW LINE OUT
MANHOLE RING ELEVATION

DISTANCE FROM PRECEDING DOWNSTREAM MANHOLE
LINEAR FOOT OF RISER PIPE
L - LEFT, R - RIGHT OF MAIN

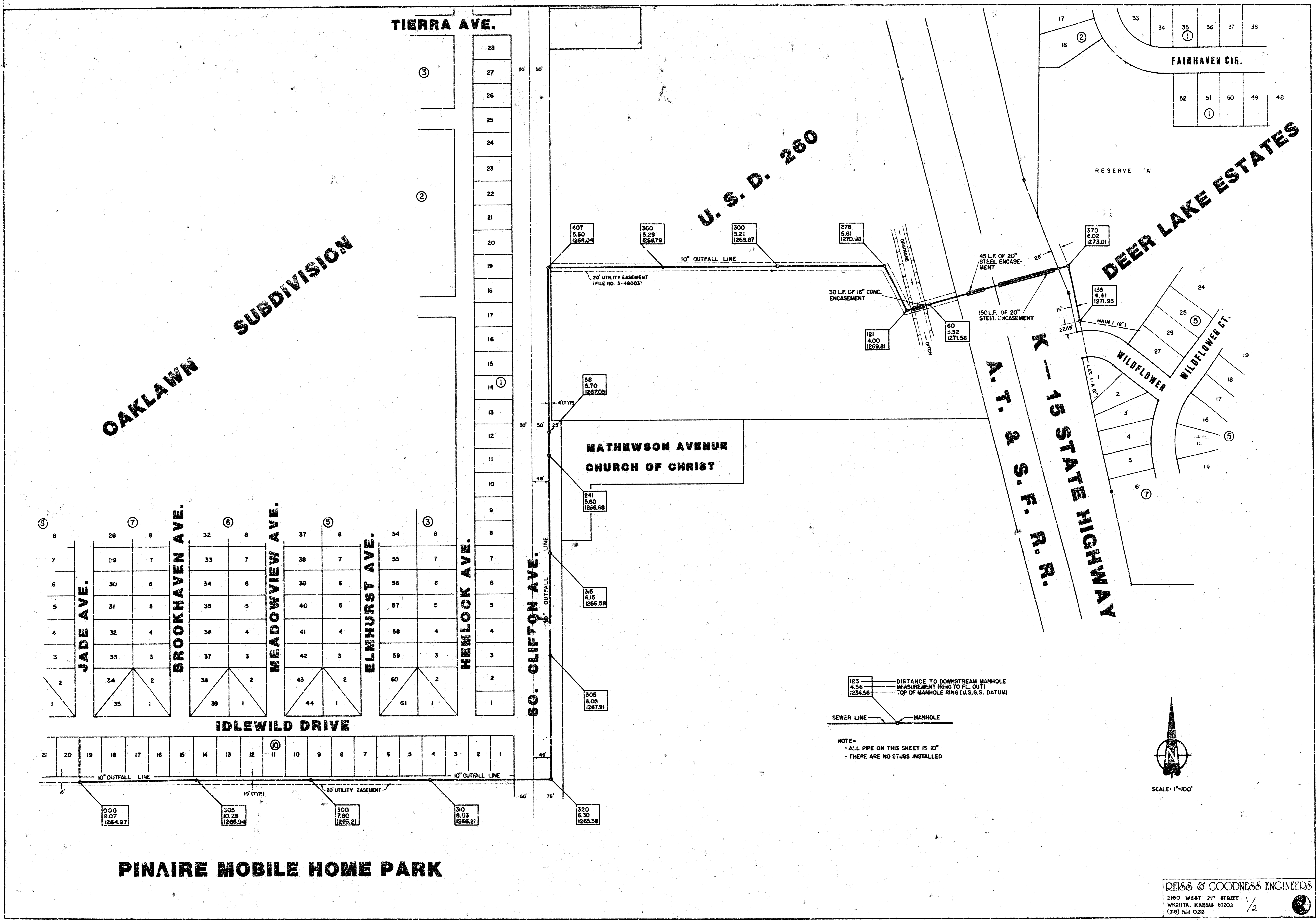
ALL PIPE SHOWN IS 8" UNLESS OTHERWISE NOTED.

DEISS & GOODNESS ENGINEERS
2160 W. 11th Street
Wichita, Kansas 67203
(316) 832-0213

14 8 3 1

OAKLAWN SUBDIVISION

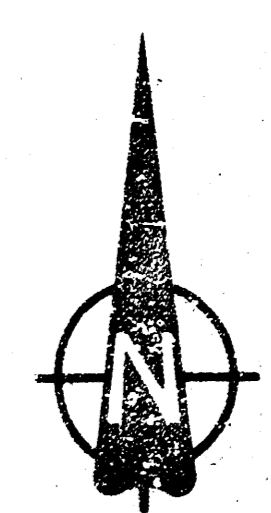
DEER LAKE ESTATES



123 4.56 1234.56
 DISTANCE TO DOWNSTREAM MANHOLE
 MEASUREMENT (RING TO FL. OUT)
 TOP OF MANHOLE RING (U.S.G.S. DATUM)

SEWER LINE MANHOLE

NOTE:
 - ALL PIPE ON THIS SHEET IS 10"
 - THERE ARE NO STUBS INSTALLED



SCALE: 1"=100'

DEISS & GOODNESS ENGINEERS
 2100 WEST 21ST STREET
 WICHITA, KANSAS 67203
 (316) 624-0223

REVISION	DRAWN BY	CHECKED BY	DESIGNED BY	PROJECT	CUSTOMER	SCALE	PROJECT NO.
				"AS CONSTRUCTED" SANITARY SEWER SYSTEM	DEER LAKES ESTATES, SEDGWICK COUNTY, KANSAS	SCALE 3/16"	PROJECT NO.
						DATE 4/29/93	SHEET 1 OF 2