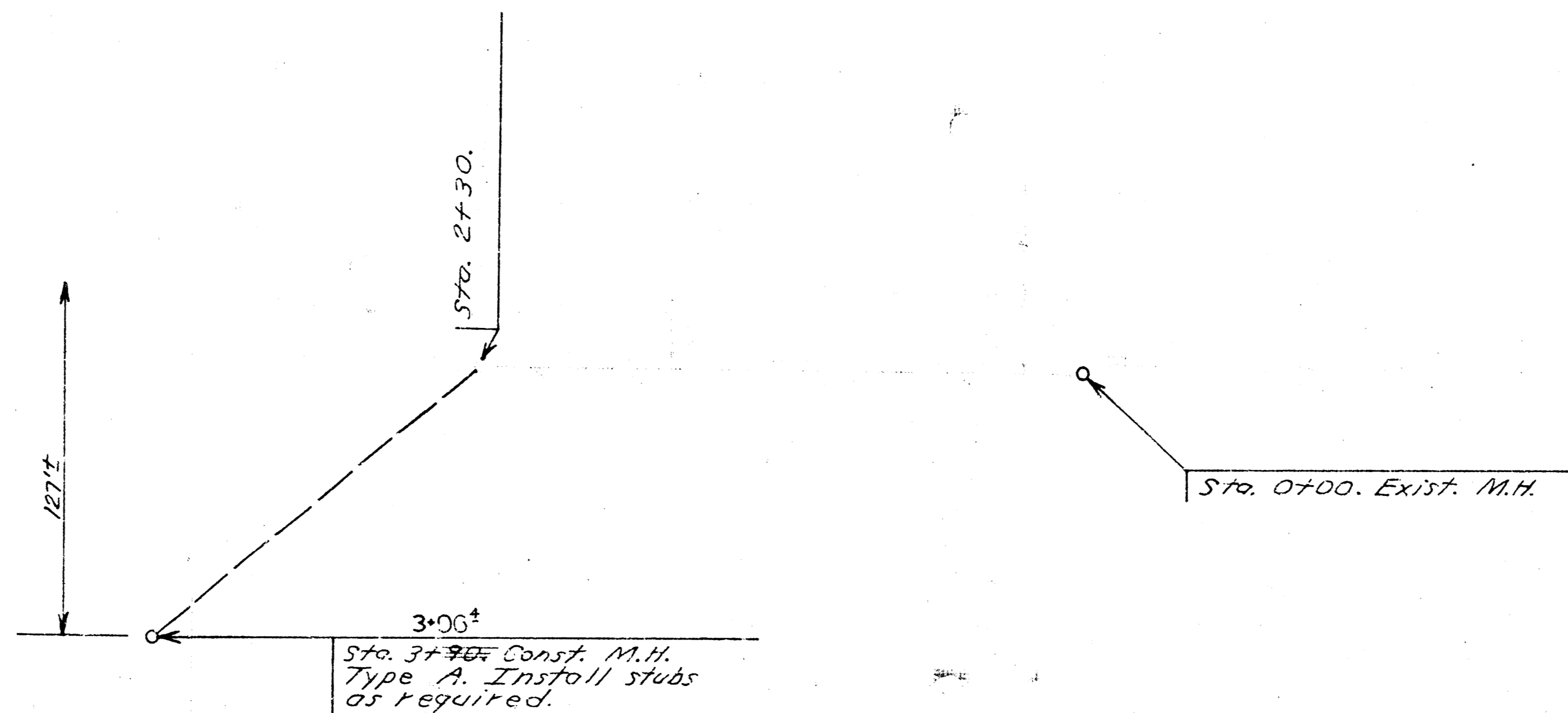
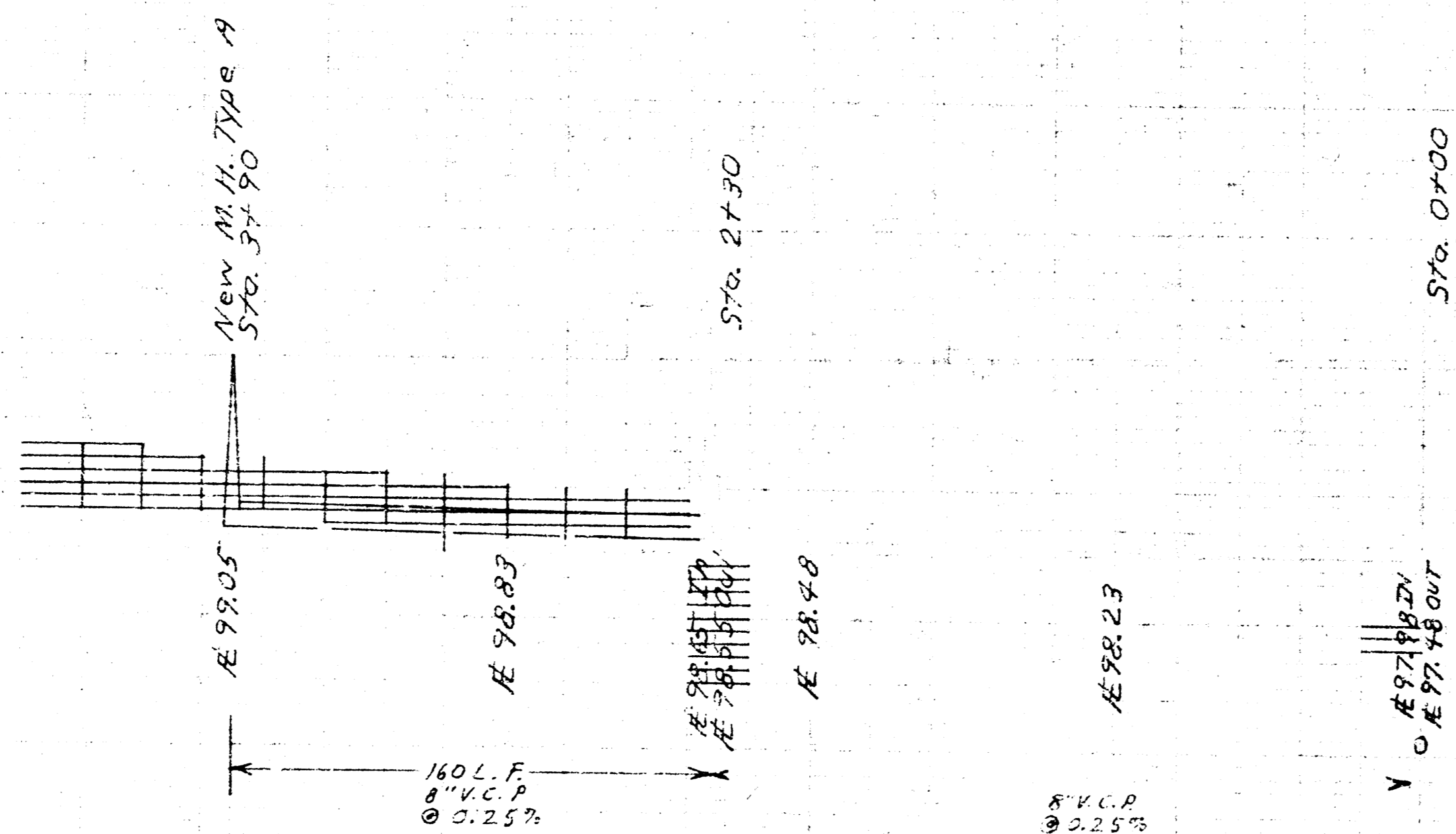


6" x 6" CHISELED SQUARE ON CENTERLINE CONCRETE
 PAVEMENT SURFACE SLAB R-2 AND WEST LINE WEST STREET.



NOTE: EXACT LOCATION OF MANHOLE AT STA. 3490 IS TO
 BE DETERMINED BY OWNER. CONCRETE ENCASUREMENT
 WILL BE REDUCED UNDER THE DRAINAGE DITCH
 BEGINNING FROM MANHOLE AT STA. 2430 IF COVER
 OVER CURB IS LESS THAN 10".

Rev. 10-26-73



AS SHOWN IN THE ALTERNATE PLANS
 10-26-73