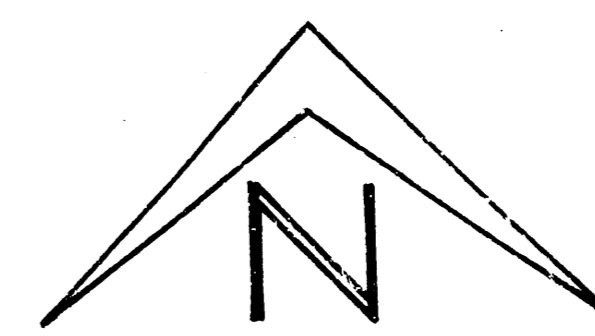
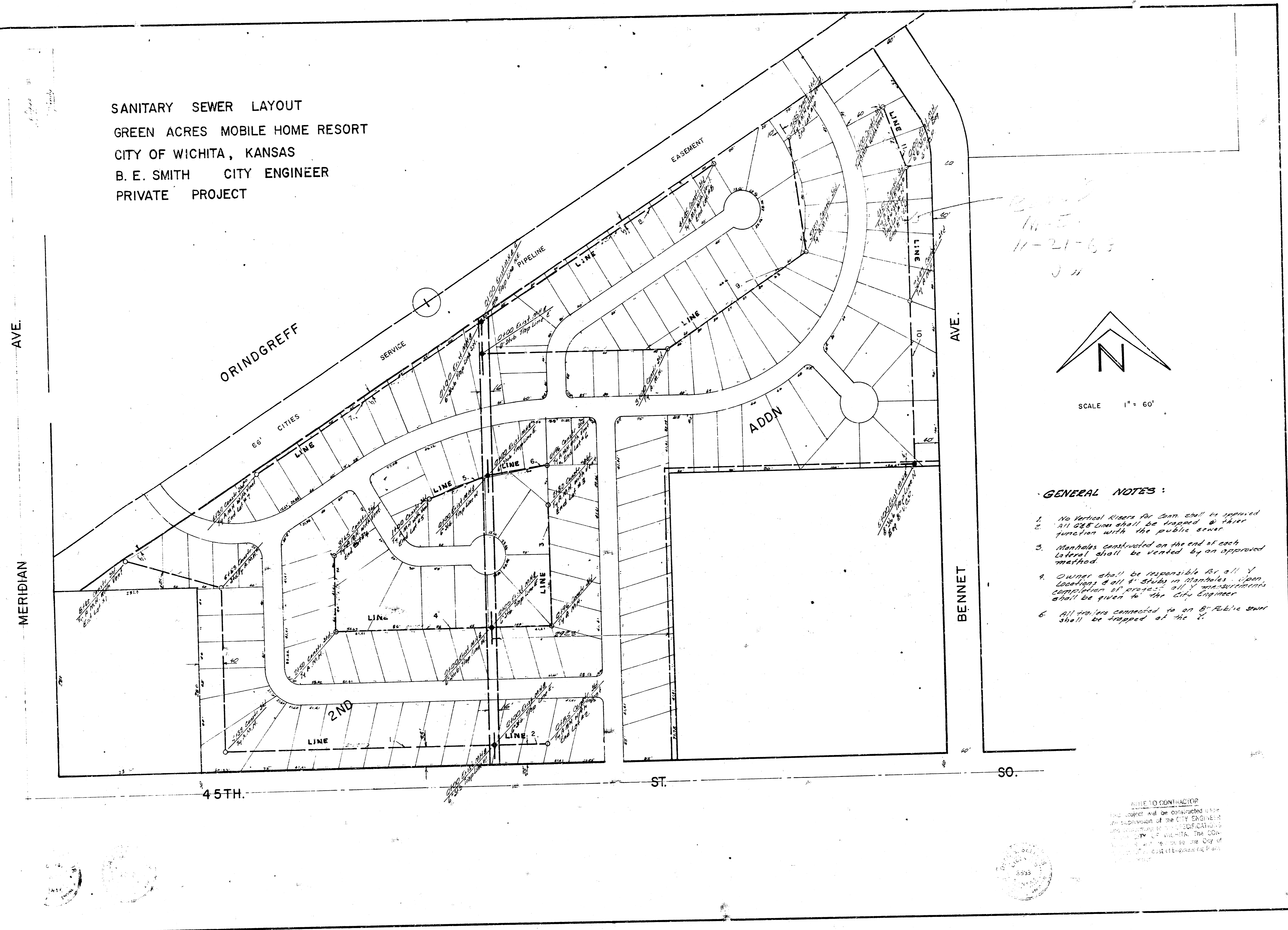


SANITARY SEWER LAYOUT
 GREEN ACRES MOBILE HOME RESORT
 CITY OF WICHITA, KANSAS
 B. E. SMITH CITY ENGINEER
 PRIVATE PROJECT



SCALE 1" = 60'

GENERAL NOTES:

1. No vertical risers for 2000 shall be approved
2. All 2000 lines shall be connected to their junction with the public sewer
3. Manholes constructed on the end of each lateral shall be vented by an approved method
4. Owner shall be responsible for all Y loadings & all Y studs in manholes. Upon completion of project all Y measurements shall be given to the City Engineer
5. All manholes connected to an 8" Public sewer shall be trapped at the Y.

WHILE IN CONTRACTOR
 AND SHALL BE CONSTRUCTED UNDER
 THE SUPERVISION OF THE CITY ENGINEER
 AND SHALL BE SUBJECT TO THE CITY ENGINEER'S
 APPROVAL. THE CITY ENGINEER'S APPROVAL
 DOES NOT CONSTITUTE A GUARANTEE OF THE
 ACCURACY OF THE INFORMATION CONTAINED
 HEREIN. THE CITY ENGINEER'S OFFICE IS
 NOT RESPONSIBLE FOR THE COST OF ENGINEERING FEES
 OR FOR THE COST OF OBTAINING PERMITS.



