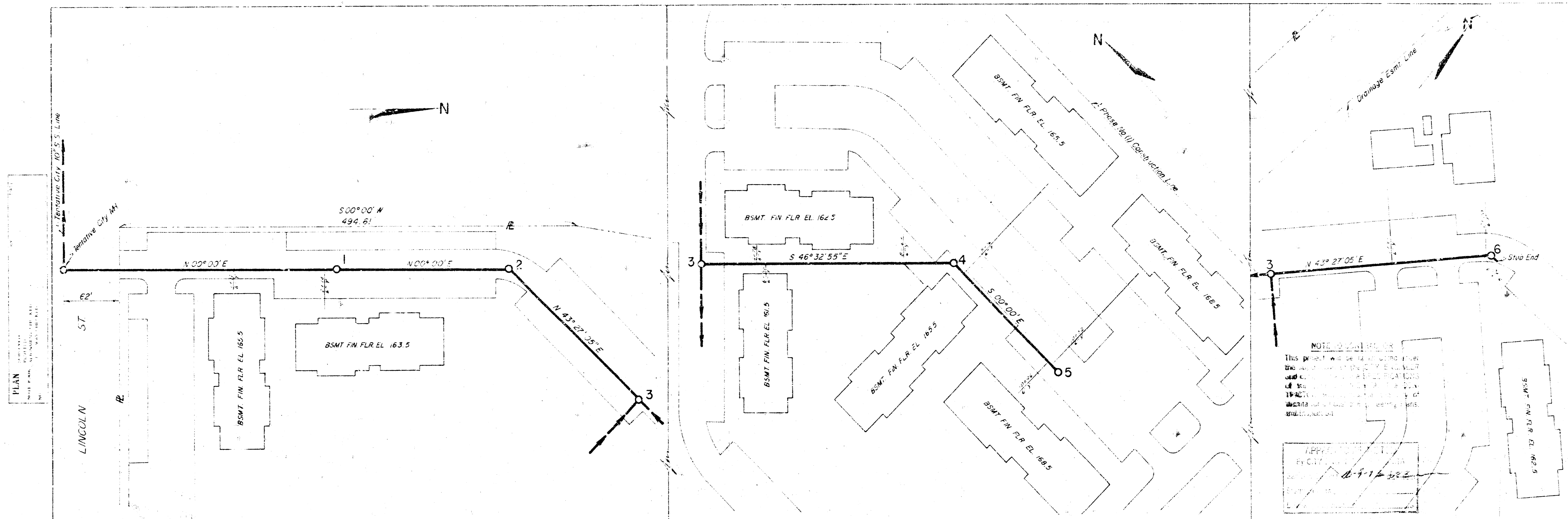
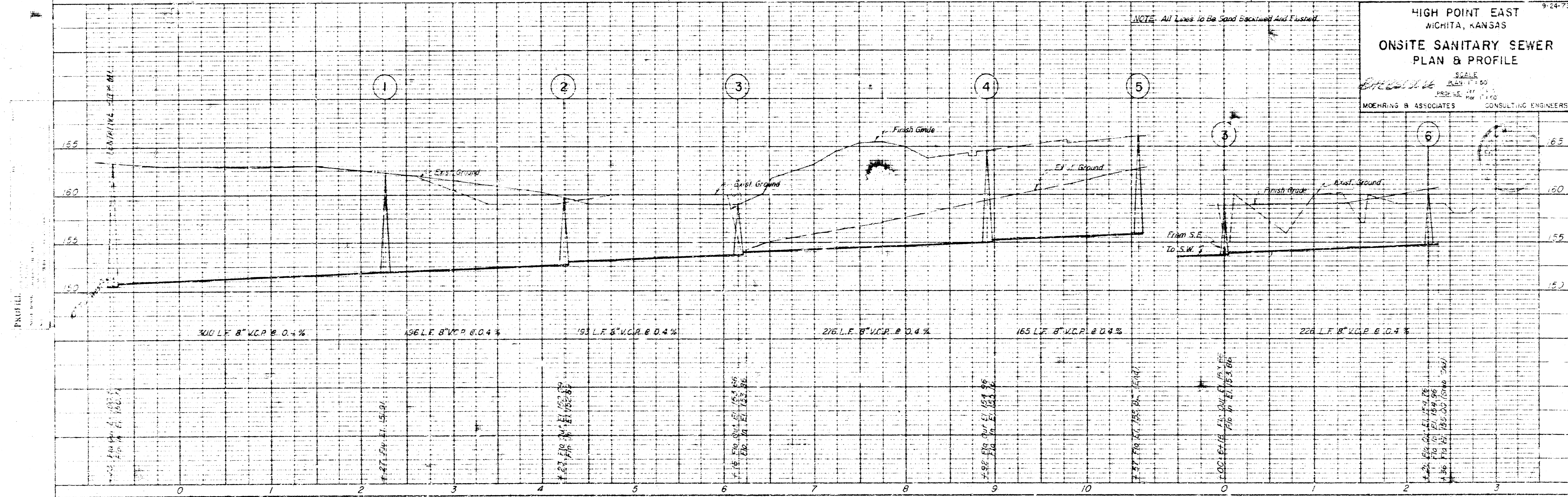


SCALE: PLAN 1"=20' PROFILE 1"=4'



NOTE: This project will be installed in accordance with the City of Wichita Sanitary Sewer Specifications. All materials and workmanship shall conform to the City of Wichita Sanitary Sewer Specifications. The City of Wichita is not responsible for the accuracy of the information provided herein.

APPROVED:
 PROJECT NO. 9-17-2022



HIGH POINT EAST
 WICHITA, KANSAS
 ONSITE SANITARY SEWER
 PLAN & PROFILE

SCALE: 1" = 10'
 DATE: 9-17-2022
 PROJECT NO. 9-17-2022

MOENING & ASSOCIATES CONSULTING ENGINEERS