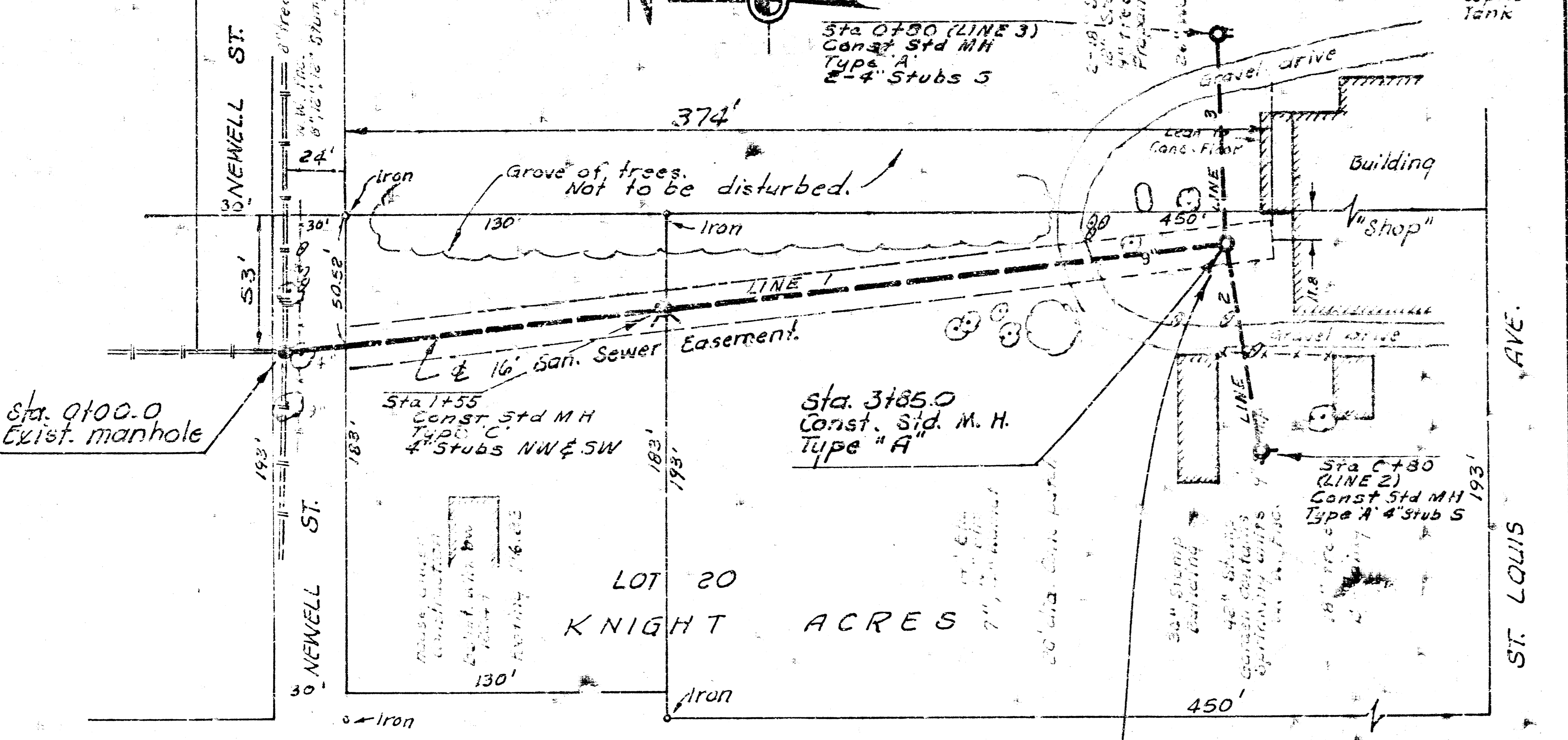


B.M. 121.20 NE cor. conc. porch
543 N. Knight.



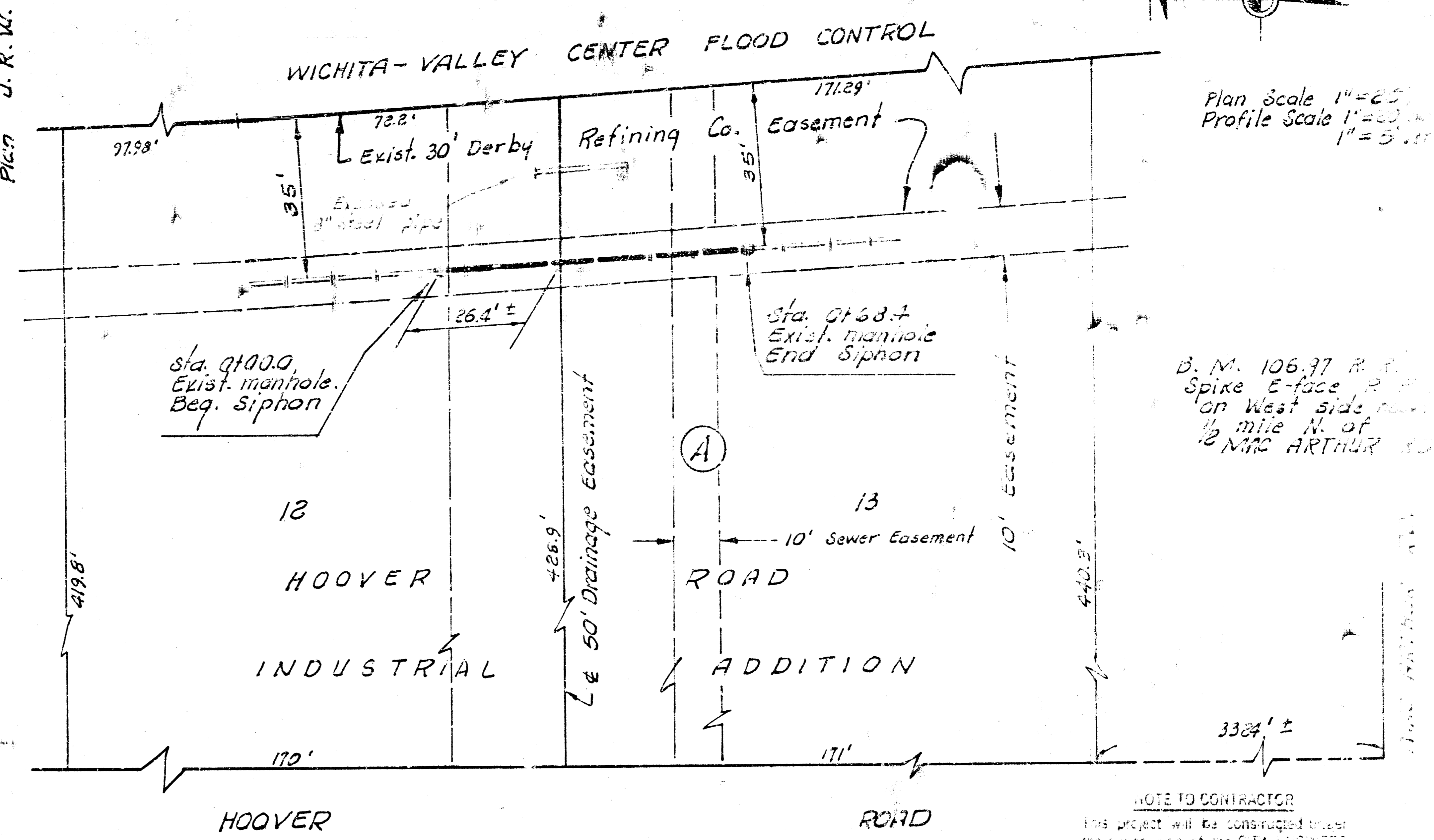
M. 122.28 SE cor. conc. porch Ho# 457 High.

NOTE TO CONTRACTOR
This project will be constructed under the supervision of the CITY ENGINEER and conforming to the SPECIFICATIONS of the CITY OF WICHITA. The CONTRACTOR will reimburse the City of Wichita for all cost of Engineering, Plans, and Inspection.

NOTE:
Stubs to be install in manhole at Sta. 3185.0 as required to facilitate connection of buildings.

Plan Scale 1" = 40'
Profile scale 1" = 40' Horiz.
1" = 5' Vert.

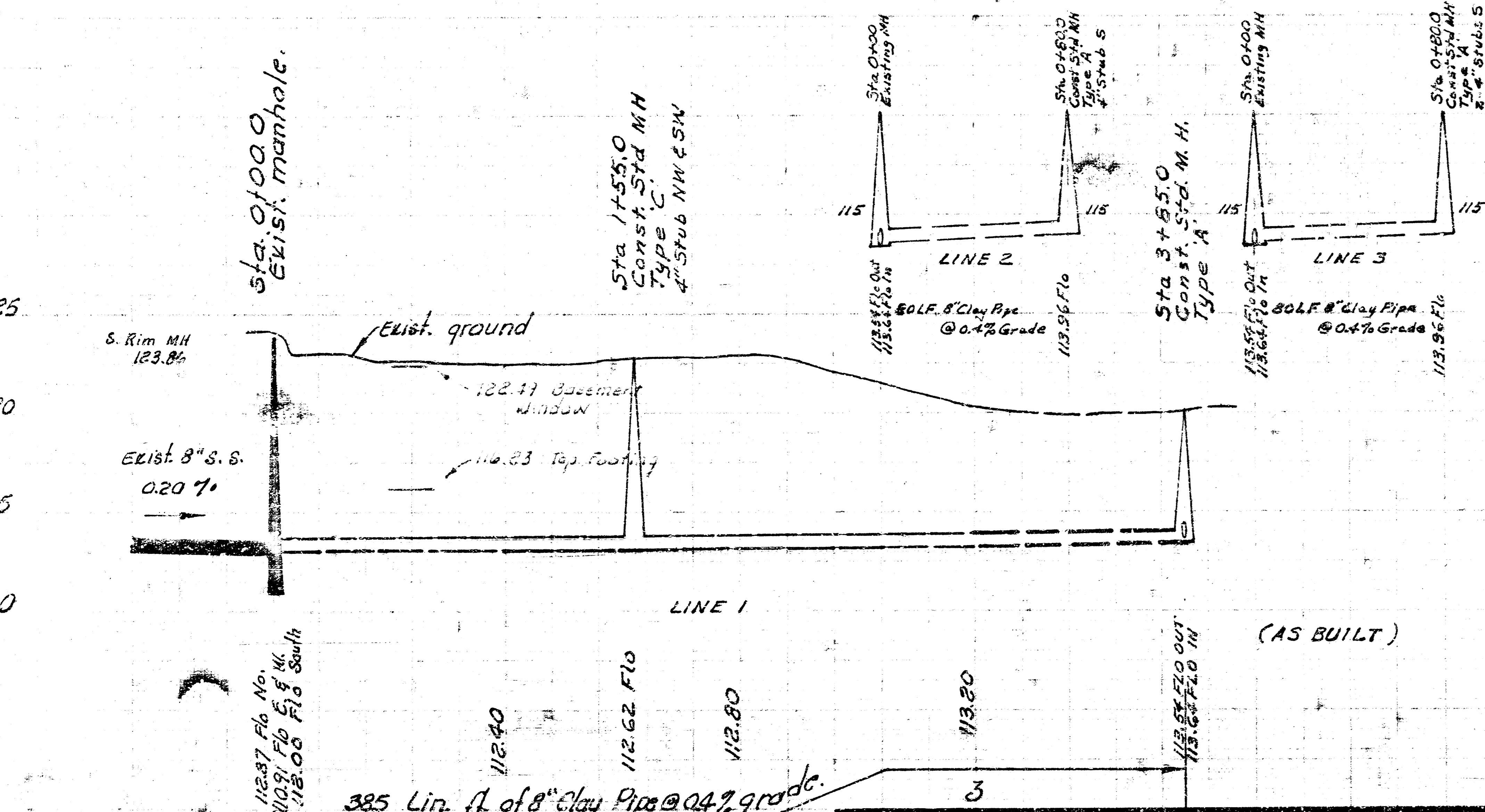
Survey D.L.K.
BK. CLK 224
Plan U.R.W.



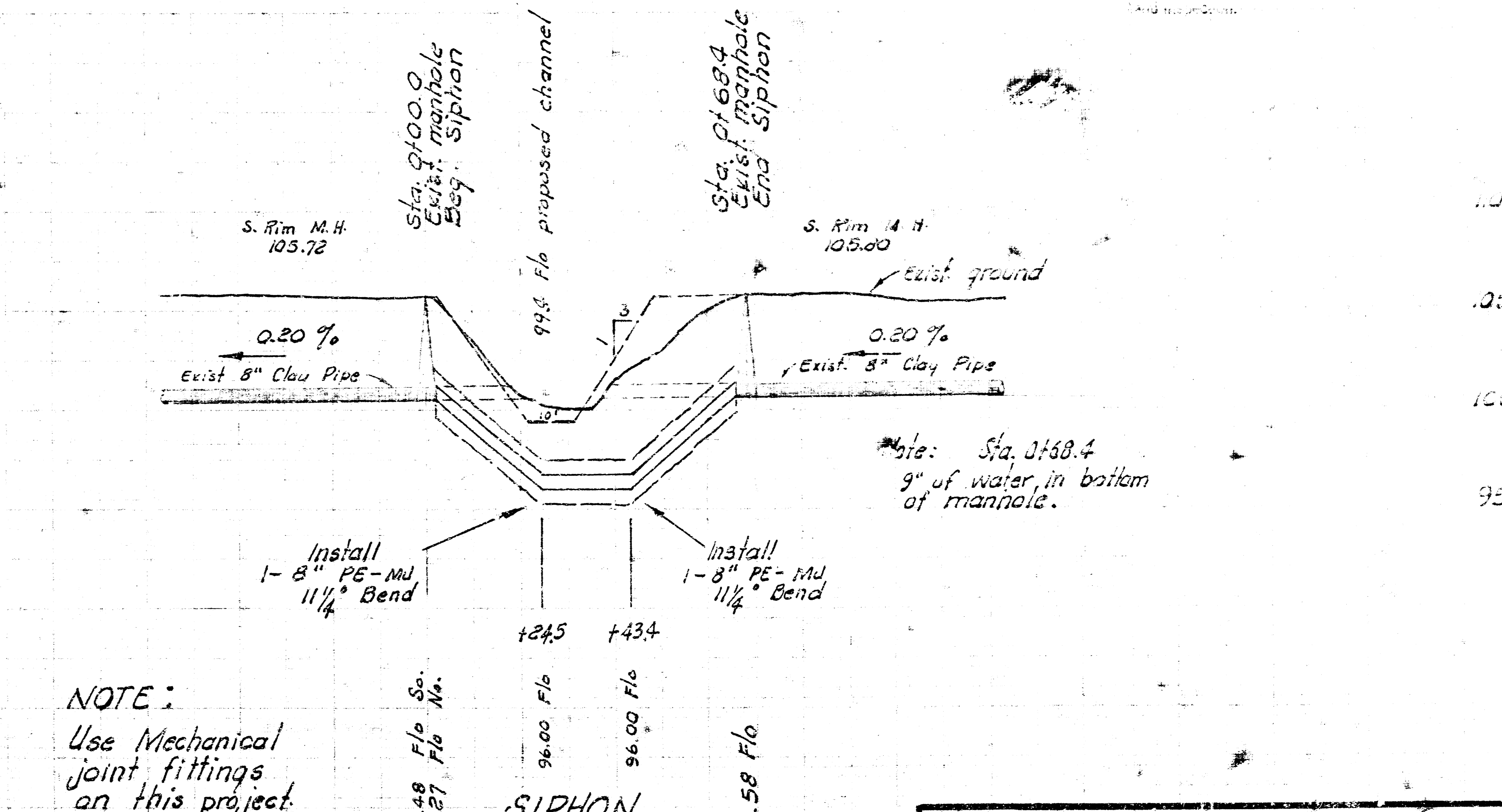
Plan Scale 1" = 20'
Profile Scale 1" = 20' Horiz.
1" = 5' Vert.

B.M. 106.97 R. Spike E-face on West side of 1/2 mile N. of Mac ARTHUR

NOTE TO CONTRACTOR
This project will be constructed under the supervision of the CITY ENGINEER and conforming to the SPECIFICATIONS of the CITY OF WICHITA. The CONTRACTOR will reimburse the City of Wichita for all cost of Engineering, Plans, and Inspection.



SANITARY SEWER FOR LOT 20 KNIGHT ACRES S. E. COR. NEWELL AVE. & KNIGHT ST. CITY OF WICHITA, KANSAS
R. W. LINN - CITY ENGINEER



NOTE:
Use Mechanical joint fittings on this project.

SIPHON
68.4 Lin. ft. of 8" Ductile Iron Pipe
68.4 Lin. ft. of 8" Reinf. Conc. encasement.

SANITARY SEWER SIPHON HOOVER ROAD INDUSTRIAL ADDITION
East side of Hoover St. and 1/2 mi. north of Mac Arthur Rd. CITY OF WICHITA, KANSAS.
R. W. LINN - CITY ENGINEER
DATE: OCT 27, 1975 PROJECT NO. DRK1121502