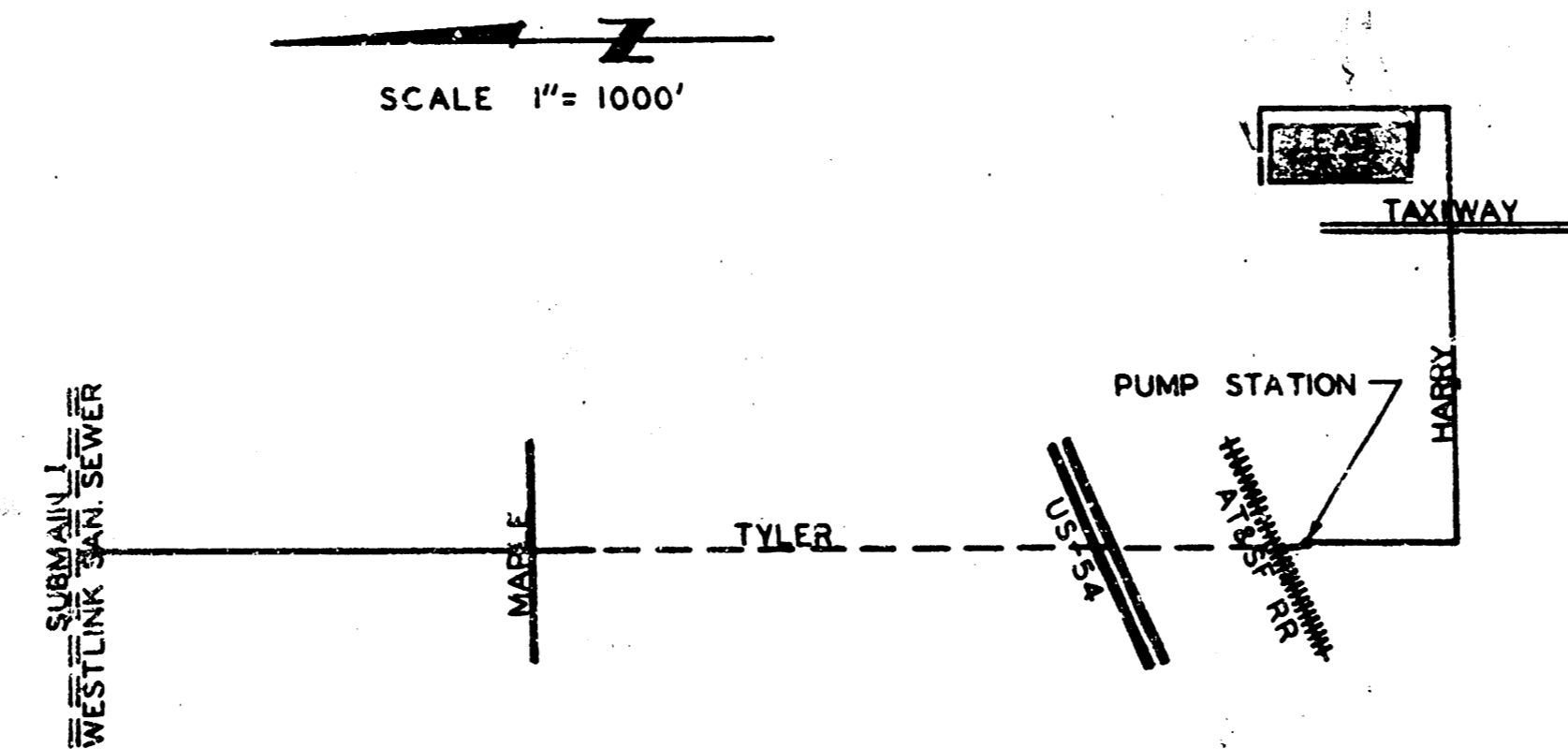


INDEX OF SHEETS:

- 1. TITLE
- 2-10. PLAN & PROFILES
- 11. SEWAGE PUMPING STATION
- 12. SEWAGE PUMPING STATION DETAILS
- 13-14. SPECIFICATIONS
- 15. CROSS SECTIONS

WASTE WATER COLLECTION SYSTEM FOR LEAR JET CORPORATION



LEGEND:

- SANITARY FORCE MAIN
- SANITARY SEWER LINE
- SECTION LINE
- WATER LINE
- GAS LINE
- PROPERTY LINE
- x—x— BARBED WIRE FENCE
- /—/— CHAIN LINK FENCE
- ◆ POWER POLE
- ◆ TELEPHONE POLE
- ▲ GAS METER
- MAIL BOX
- ⊙ MAN HOLE
- ⊕ FIRE HYDRANT
- HIGHWAY SIGN

PROFESSIONAL ENGINEERING CONSULTANTS

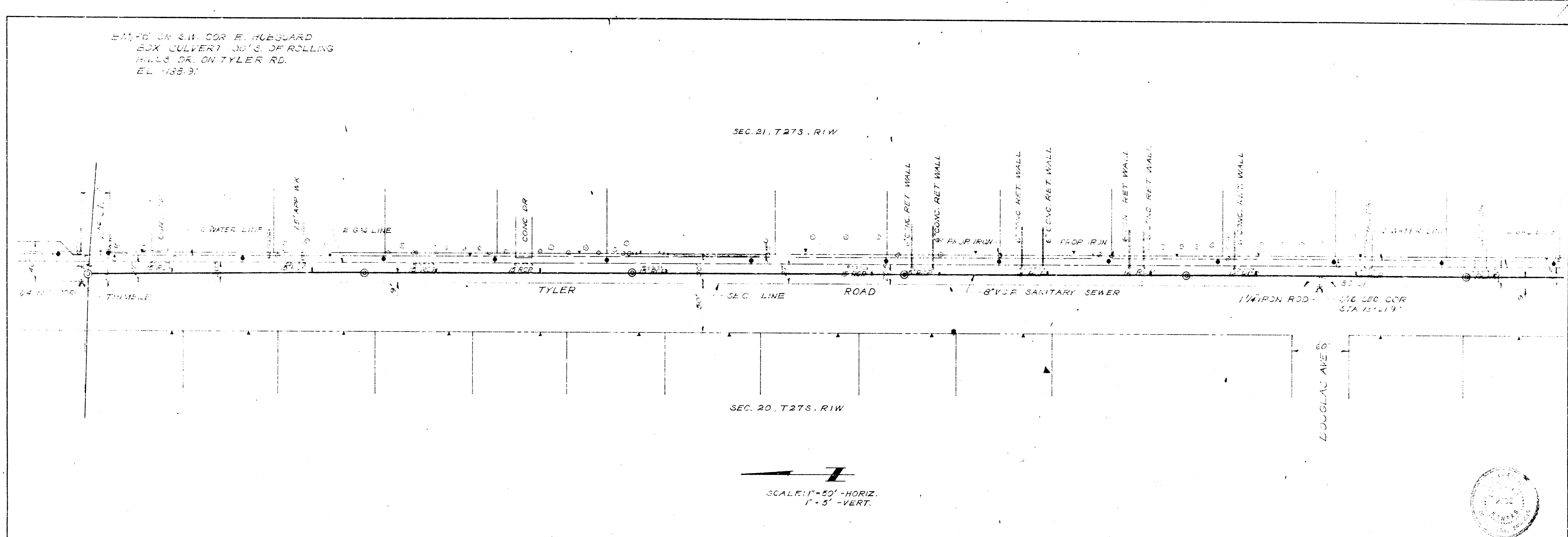
WICHITA KANSAS

1966

BOX CULVERT 30' x 6' OF ROLLING
HILLS DR. ON TYLER RD.
E.L. 1138.9'

SEC. 21, T27S, R1W

SEC. 20, T27S, R1W



SCALE: 1" = 50' - HORIZ.
1" = 5' - VERT.

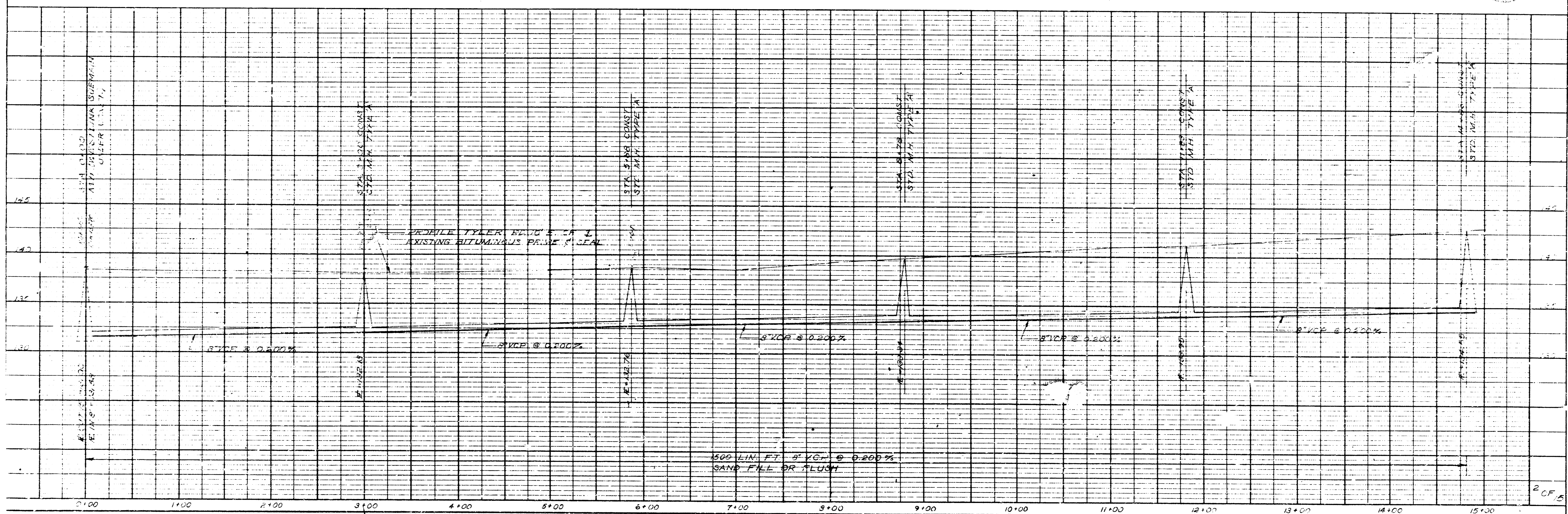
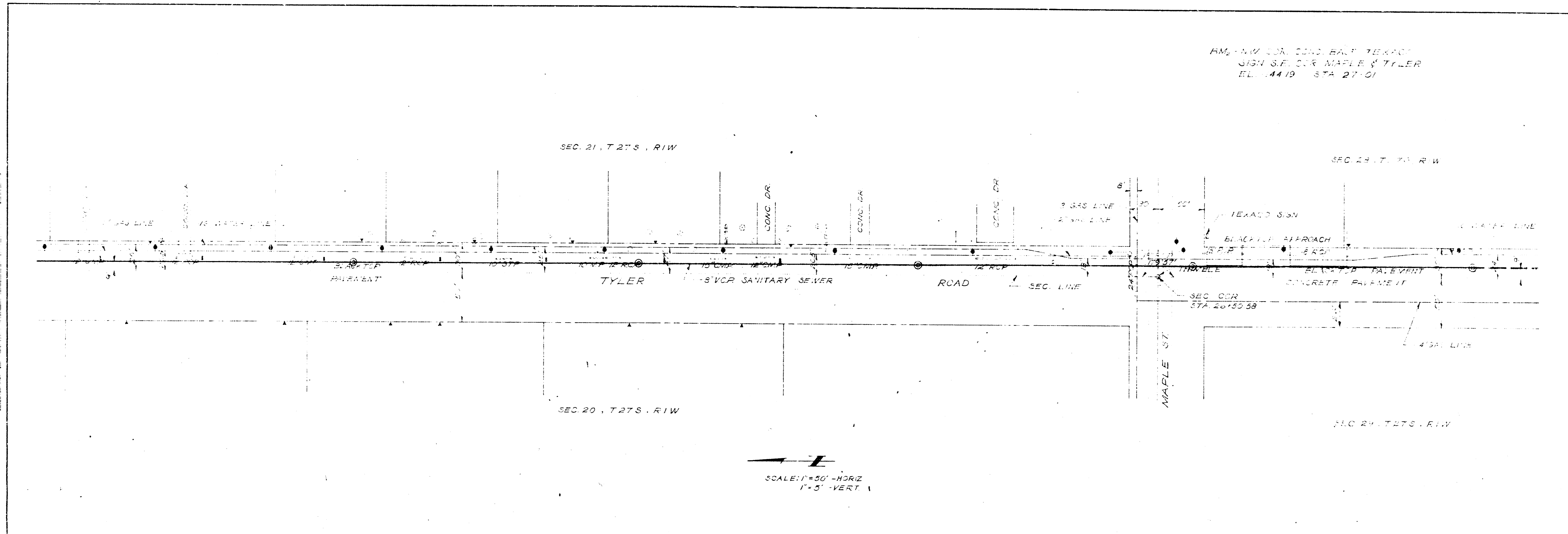


PLATE 1 - PLAN - PROFILE D.P.S. & E. STANDARD
100 APPROX. YELLOW-TONE AND PRINTED IN U.S.A.
EUGENE DIETZSCH, E.D.

2 OF 5

AM. HWY COR. COND. BALD TEXAS
 5/21/57 COR. MAPLE & TYLER
 ELEV. 4419 STA. 27+01



SCALE: 1"=50' HORIZ
 1"=5' VERT

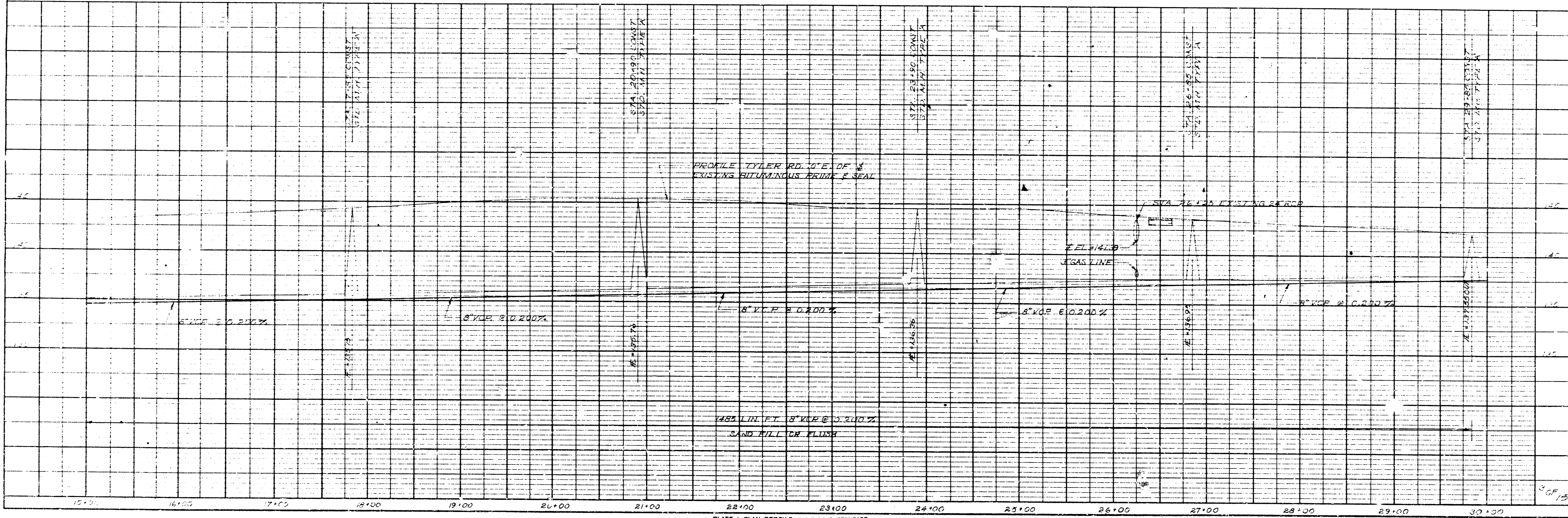


PLATE 1-PLAN-PROFILE © P. H. & E. STANDARDS
 100 ADDRESS YELLOW PAGES PRINTED IN U.S.A.
 FLORENCE, OREGON, O.O.

BM₃ - RR. SPIKE IN T.P. SE. COR.
INT. TYLER RD. & HARRY
EL. 142.73

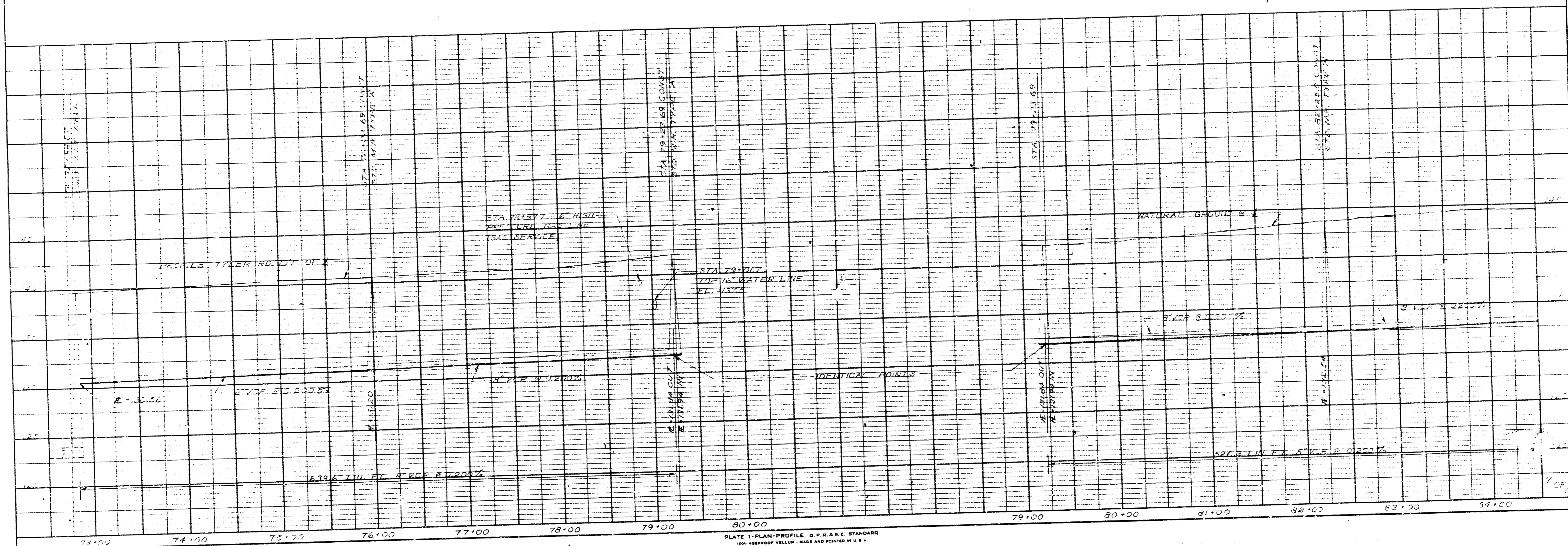
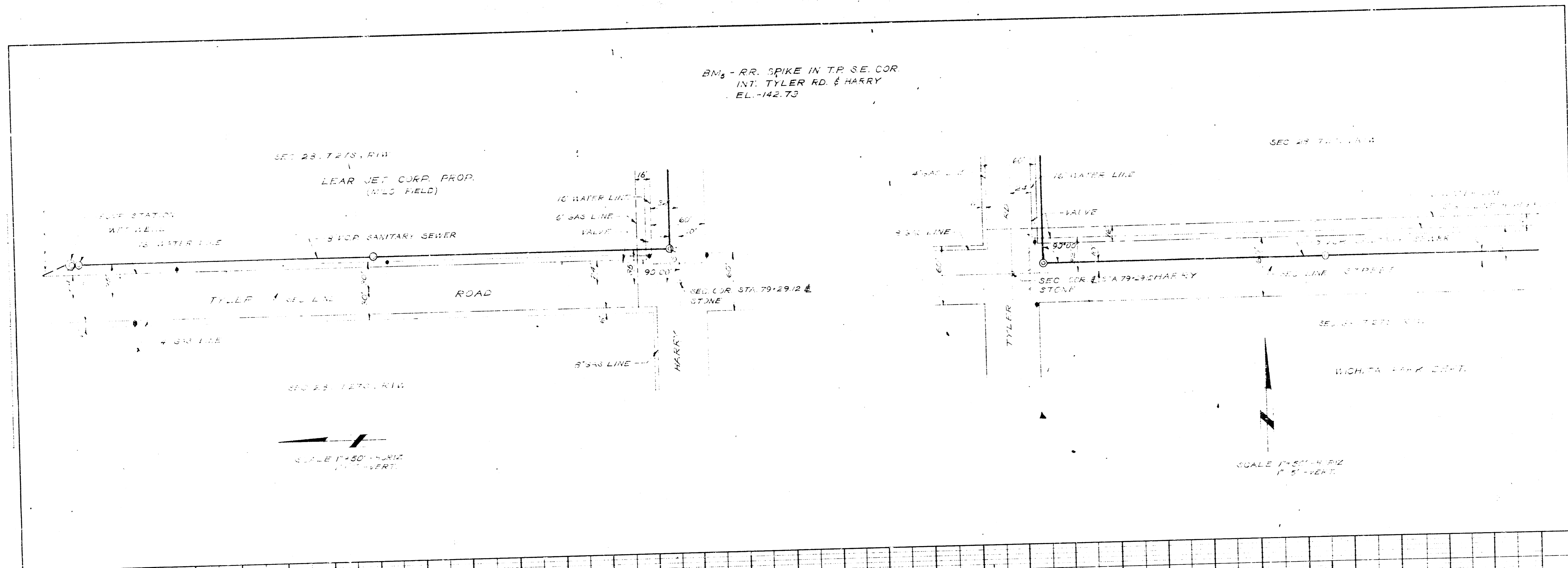
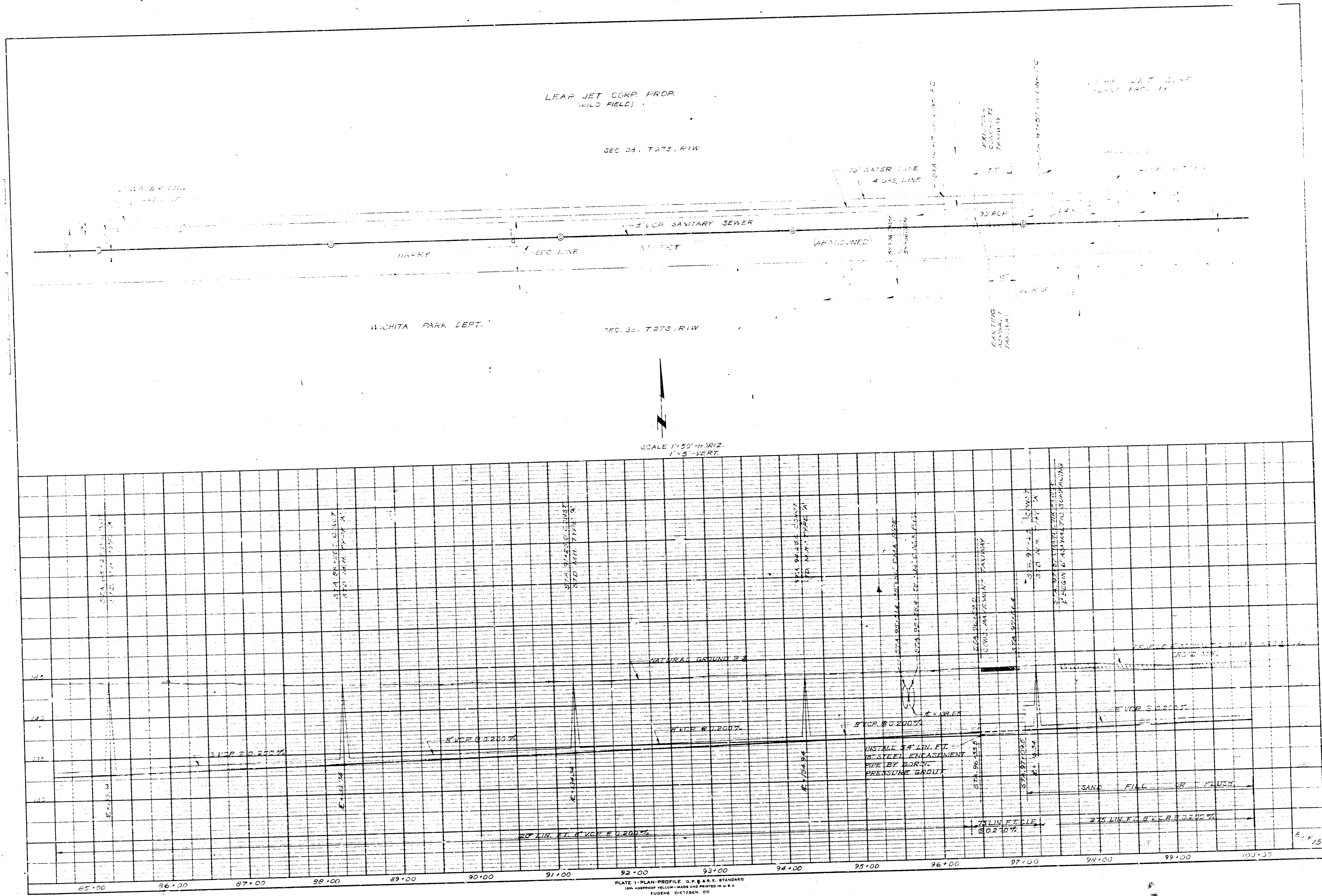


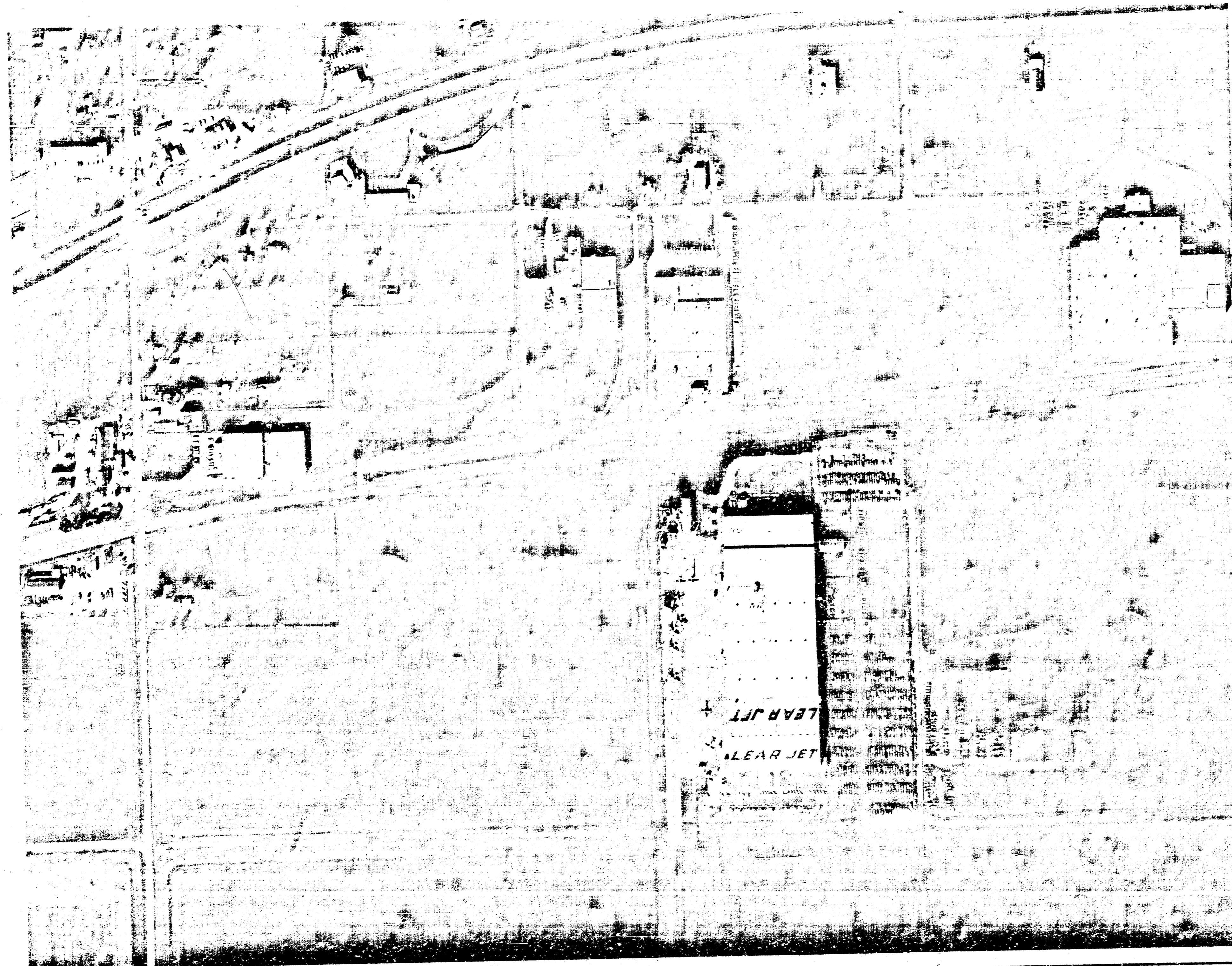
PLATE 1 - PLAN - PROFILE D. P. H. & E. STANDARD
100' HORIZONTAL SCALE AND 1" = 10' VERTICAL
ENGINEER: DISTRICT 10



SCALE 1"=50' HORIZ.
1"=5' VERT.

PLATE 1 - PLAN-PROFILE D.P. & R.C. STANDARD
100% REPROOF YELLOW INK AND PRINTED IN U.S.A.
EUGENE DITTMER CO.

B.F. 15



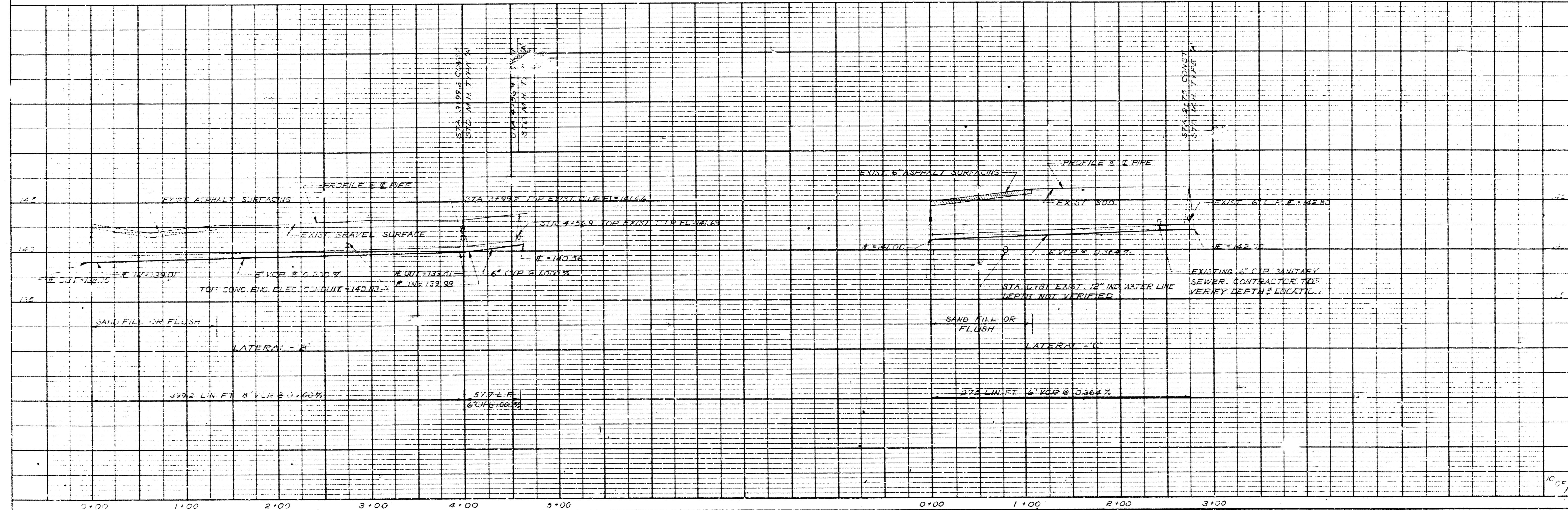
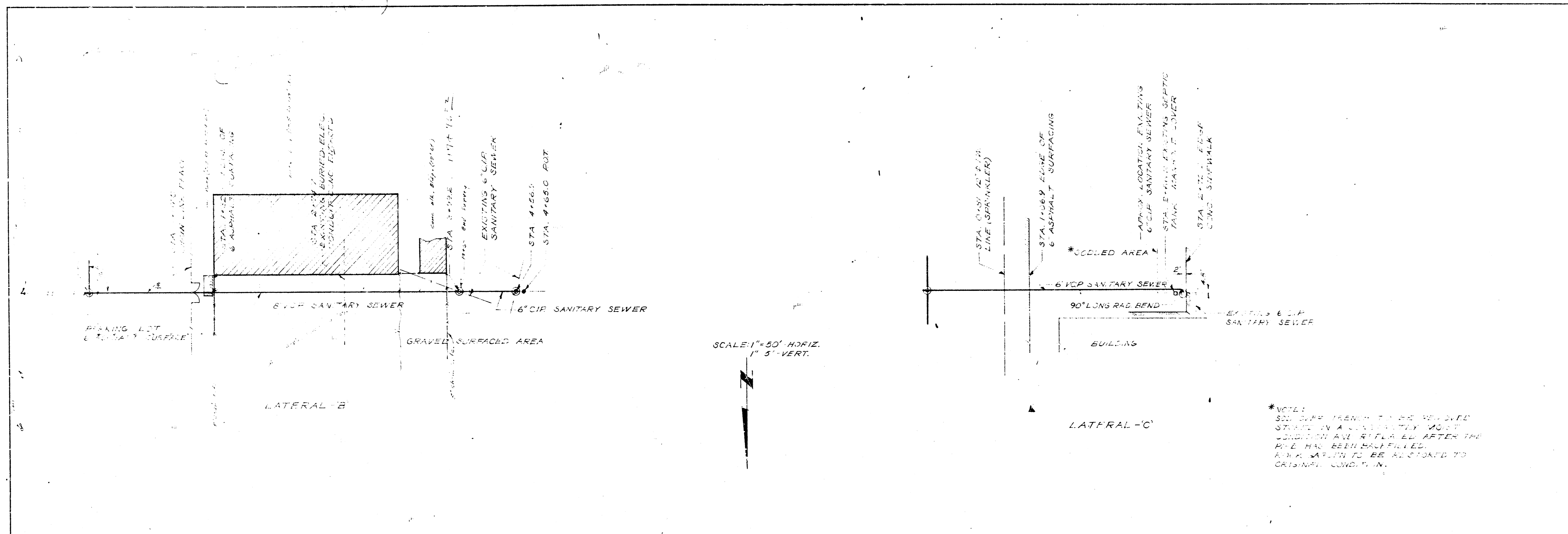
SCALE - 1" = 200 FEET
200 400

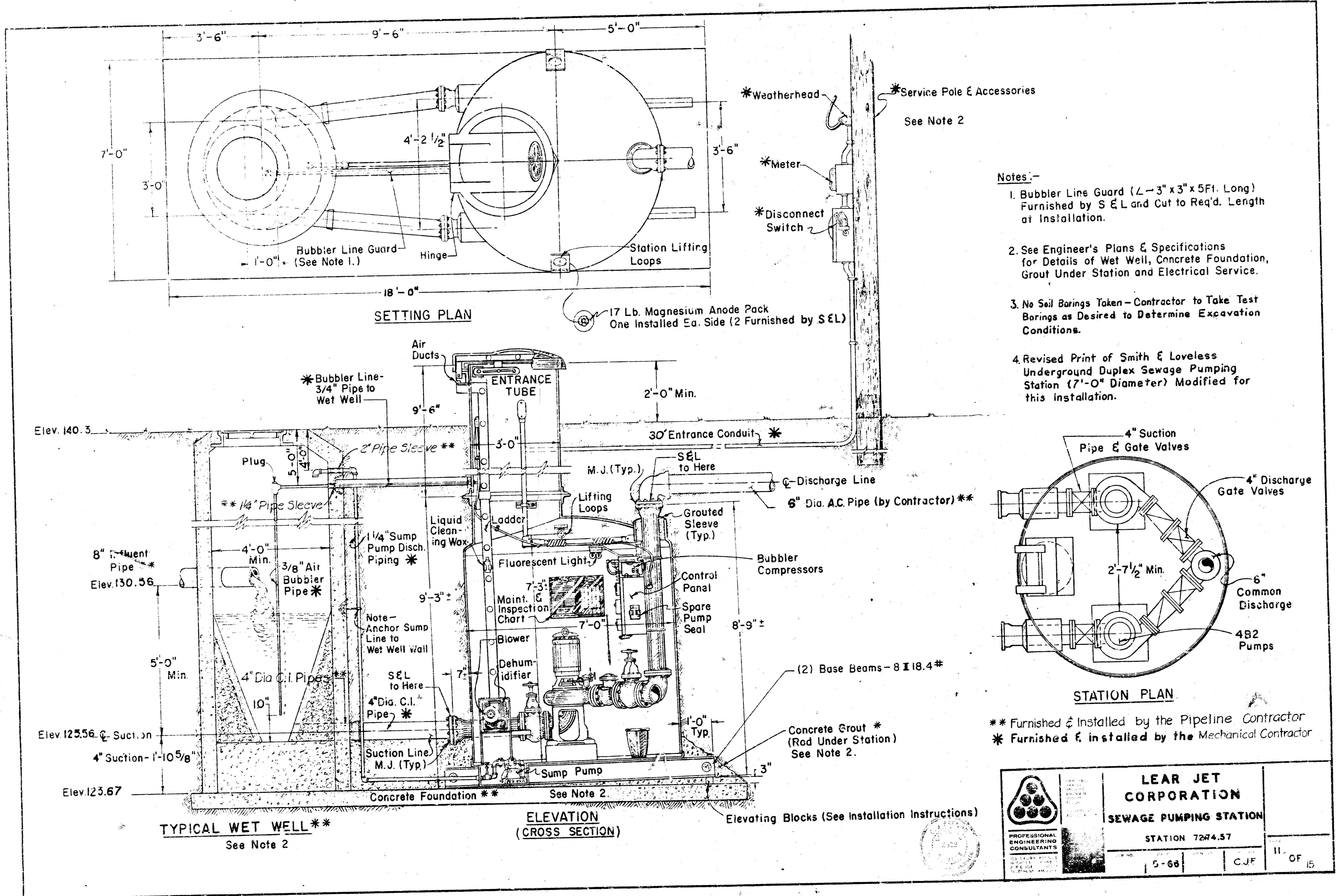


DATE: FEB, 1968

WICHITA-SEDGWICK COUNTY METROPOLITAN AREA PLANNING COMMISSION - KG&E,

THE PREPARATION OF THIS PHOTO WAS CO-SPONSORED BY THE WSCMAPC AND KG&E, THE ELECTRIC COMPANY

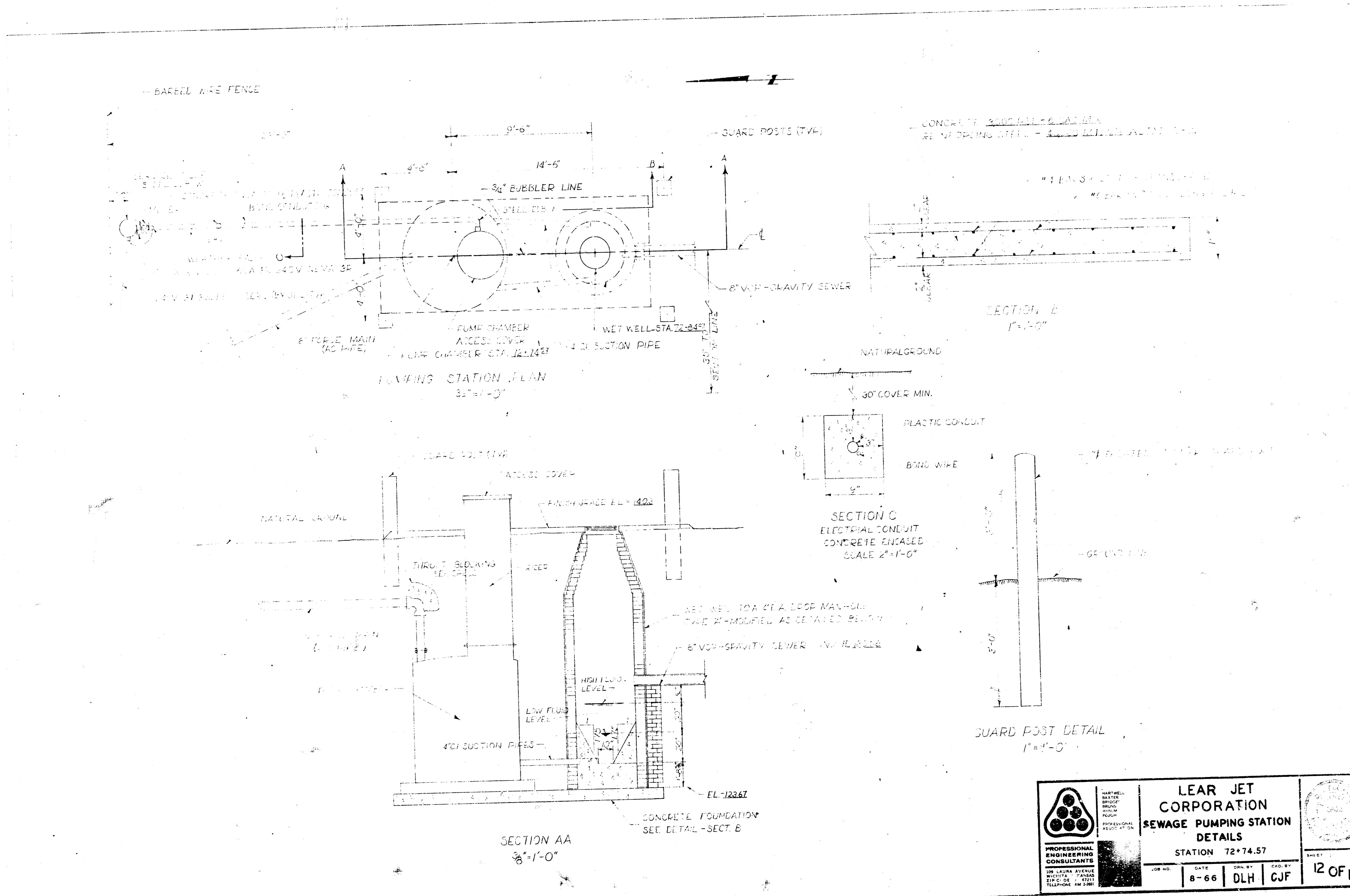






- Notes:-**
1. Bubbler Line Guard (L-3" x 3" x 5 Ft. Long) Furnished by S & L and Cut to Req'd. Length at Installation.
 2. See Engineer's Plans & Specifications for Details of Wet Well, Concrete Foundation, Grout Under Station and Electrical Service.
 3. No Soil Borings Taken - Contractor to Take Test Borings as Desired to Determine Excavation Conditions.
 4. Revised Print of Smith & Loveless Underground Duplex Sewage Pumping Station (7'-0" Diameter) Modified for this installation.

** Furnished & installed by the Pipeline Contractor
 * Furnished & installed by the Mechanical Contractor

	LEAR JET CORPORATION	
	SEWAGE PUMPING STATION	
	STATION 7274.57	
5-68	C.J.F.	11 OF 15



 PROFESSIONAL ENGINEERING CONSULTANTS <small>329 LAURA AVENUE WISHTA, TEXAS ZIP CODE 75781 TELEPHONE (409) 281-1111</small>	LEAR JET CORPORATION SEWAGE PUMPING STATION DETAILS STATION 72-74.57		 <small>DATE: 8-66 DRAWN BY: DLH CHECKED BY: CJF</small>
	<small>JOB NO. 8-66</small>		

SPECIFICATIONS

When the entrance cover is raised, the lights and ventilating blower shall be turned on automatically by a spring operated entrance switch mounted just under the cover. A manual switch shall be mounted on the side of the duct just under the spring operated switch for operation of the lights with the cover closed.

LIGHTING
To provide adequate illumination for all areas in the station and the control panel, two 40-watt fluorescent tubes with separate ballasts shall be provided.

SUMP PUMP
A submersible sump pump with close-coupled, vertical motor shall be installed in the sump. It shall have a minimum capacity of 1000 GPM at design head. The design head this pump will operate against is the static head from the sump to 3 feet below grade. A mechanical seal on the shaft shall exclude water from the motor housing. The pump shall be controlled automatically by a float-in float switch capable of operation on a 5" differential. It shall discharge into the wet well through a 1.4" galvanized steel pipe with two check valves and a gate valve within the sump chamber.

PIPING
Pump suction lines shall be 4" Class 150, cast iron pipe with mechanical joint bell outside the pump chamber and 2" bronze-fitted, double-disc gate valve inside the chamber. The discharge line from each pump shall be fitted with a bronze-fitted check valve and a 4" bronze-fitted, double-disc gate valve. The check valves shall be of the spring-loaded lever type so that the crapper can be lifted to back flush the pump and suction line. Four-inch, straight-through check valves and increasing check valves up to 8" x 8" shall have stainless steel shafts with double "D" rings and grease fittings at both ends where the shaft passes through the body of the valve. The common discharge pipe and the discharge outlet shall be 4" Class 150 cast iron pipe with a mechanical joint bell just outside the pump chamber.

All steel pipe in contact with the soil or with the sewage shall be field coated with one coat of epoxy resin after installation.

WIRING
The pump station shall be completely wired at the factory, except for the power feeder lines, in accordance with National Electrical Code. All wiring in the pump station shall be color coded as indicated on the wiring diagram. All wiring outside the panel shall be in conduit, except for 110 volt accessory items, and shall terminate in a threaded conduit connection through the side of the entrance tube above ground level. The manufacturer shall provide a transformer for all 120 volt requirements - 240 V. Pri. - 120 V. Sec. - Single Phase.

SPARE PARTS
A complete replacement pump-shaft seal assembly shall be furnished with each lift station. The spare seal shall be securely fastened to the control panel and shall include complete installation instructions. A spare volute gasket shall be provided. A spare filter cone for the seal filter shall also be provided in the same container as the shaft seal.

INSTALLATION AND OPERATING INSTRUCTIONS
Installation of the pump chamber, entrance tube and related appurtenances shall be done in accordance with written instructions provided by the Manufacturer. These instructions shall be securely attached to and readily visible on the outside of the main chamber of the pump station.

A conspicuous Maintenance and Operating Instruction Chart and Daily Maintenance and Inspection Record Chart with ample room for recording daily inspections of the pump station shall be securely mounted on the interior wall of the main pump chamber.

In addition to the Maintenance and Operating Chart, the Manufacturer shall further provide a complete and detailed Operating and Maintenance Manual. This Manual shall cover, in addition to general operating procedures, the operation, maintenance and servicing procedures of the major individual components provided with the pump station.

The Manufacturer shall further provide the services of a factory-trained representative for a maximum period of one day to perform initial start-up of the pump station and to instruct the owner's operating personnel in the operation and maintenance of the equipment provided by them.


The Contractor shall excavate for the pumping station at the location shown on the plans and shall provide such shoring, shoring, and dewatering as may be required for proper construction of the concrete foundation, wet well, setting and grouting of the pump chamber.

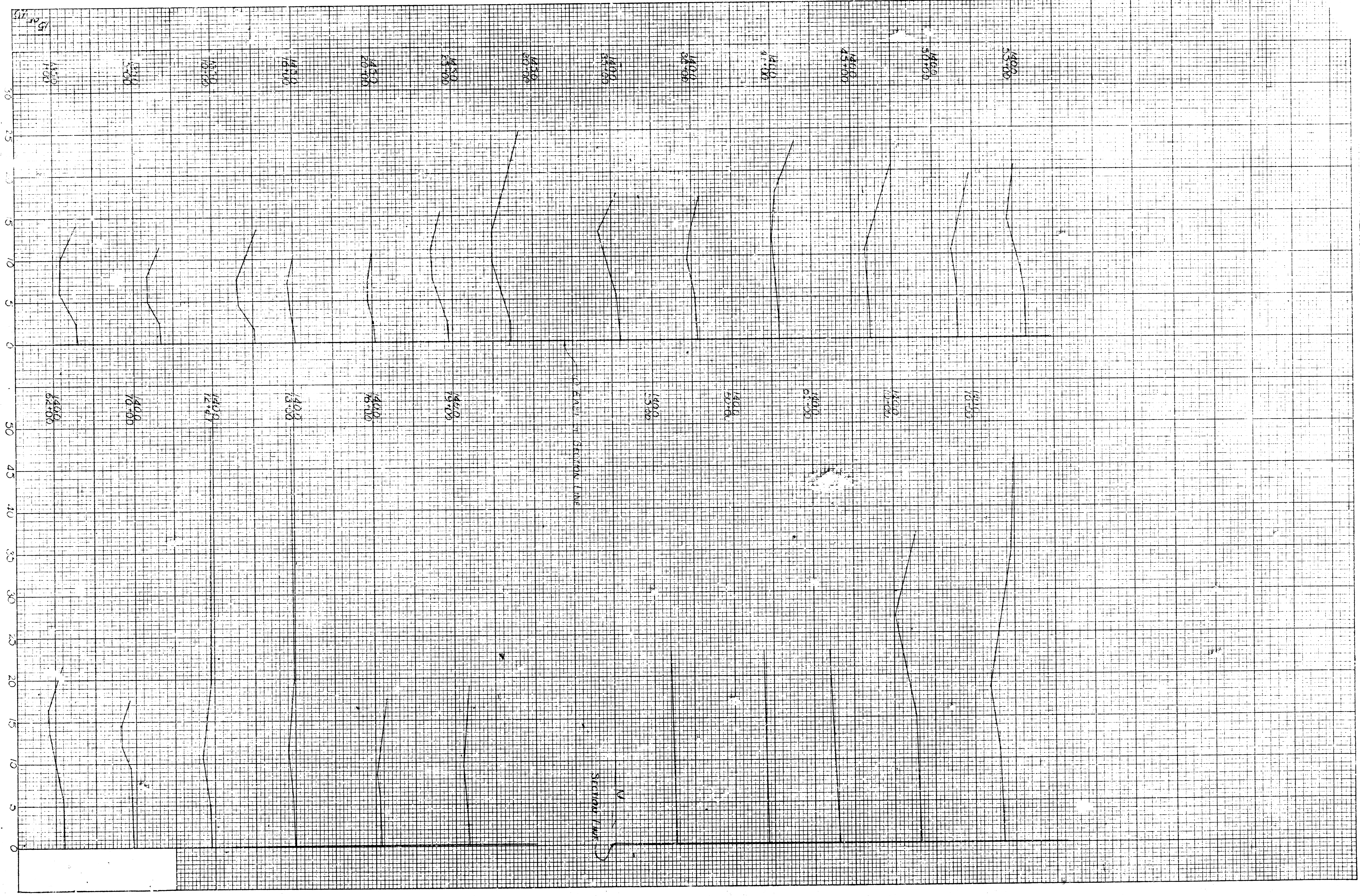
The Contractor shall furnish and install the electrical conduit, bubbler line, sump pump discharge line, service pipe, disconnect switch, meter box, cast iron suction pipes, and guard posts as detailed on the plans.

The Contractor shall exercise care during backfill operations so as not to capture the bubbler line or damage the piping, conduit, and pump station. The Contractor shall install the bubbler line guard furnished so as to ensure proper service life of the bubbler system. The pumping station site shall be compacted and fine graded to the elevation shown. All excess excavated material shall be disposed of as directed by the Engineer at no additional cost to the Owner.

GUARANTEE
The Manufacturer of the lift station shall guarantee for one year from date of shipment that the structure and all equipment will be free from defects in design, material and workmanship.

In the event a component fails to perform as specified or is proven defective in service during the guarantee period, the Manufacturer shall provide a replacement part without cost to the Owner.

 PROFESSIONAL ENGINEERING CONSULTANTS <small>INCORPORATED</small> 2100 W. 10th Street Wichita, Kansas Telephone 434-1234	SANITARY SEWER AND PUMPING STATION DETAILS	SHEET 14 OF 15
	JOB NO. 8-66 DATE: DLH DRAWN BY: HRB	



PART 2 - CROSS SECTION
 SECTION 1
 SECTION 2
 CENTERLINE
 NORTH