

Pipe 6" A.C. Pipe South of 2" connection (217.5' South of Tyler Ave.)

16" Water (24 E. E.)
6" Force Main (To be abandoned)

LIFT STATION (To be Modified)
Btm. Elev. 129.32
Fl. 8' West 129.87

Existing Manhole
8" S.S. (Abandoned)

PROPOSED 6" FORCE MAIN (20' N. E.)
6" Cos (45' N. E.)
20' Utility Easement

Abandoned 8" S.S. (10' N. E.)

EXISTING MANHOLE
Sta. 98+00 S.W. 1/4 West Branch
Fl. 24" 135.12
Fl. 16" 137.37

AREA MAP
FORCE MAIN RELOCATION
LIFT STATION MODIFICATION

1500 S. TYLER RD
WICHITA, KANSAS

Private Proj. no. 469-76-245-30e-3-00

*RELOCATION OF FORCE MAIN
TO WEST BRANCH, SOUTHWEST INTERCEPTOR
AND
MODIFICATIONS TO LIFT STATION
AT 1500 S. TYLER ROAD*

WICHITA, KANSAS

PRIVATE PROJECT NO. 468-76-245-80613-000-000-008

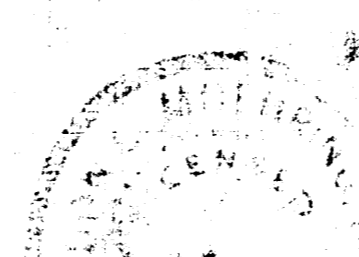
INDEX

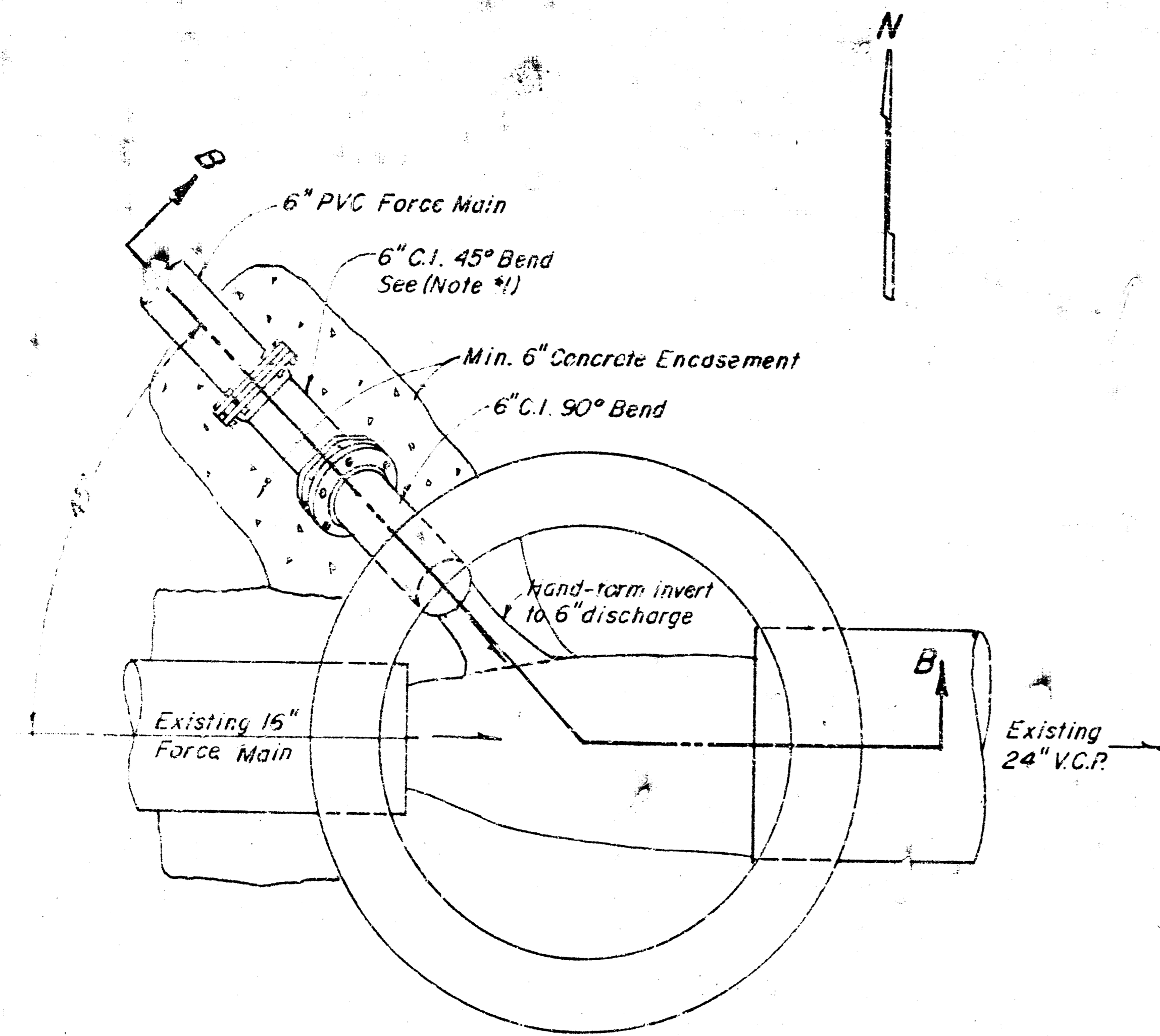
- 1. TITLE SHEET*
- 2. AREA PLAN*
- 3. PLAN AND PROFILE*
- 4. MISCELLANEOUS DETAILS*

10-4-78
[Signature]

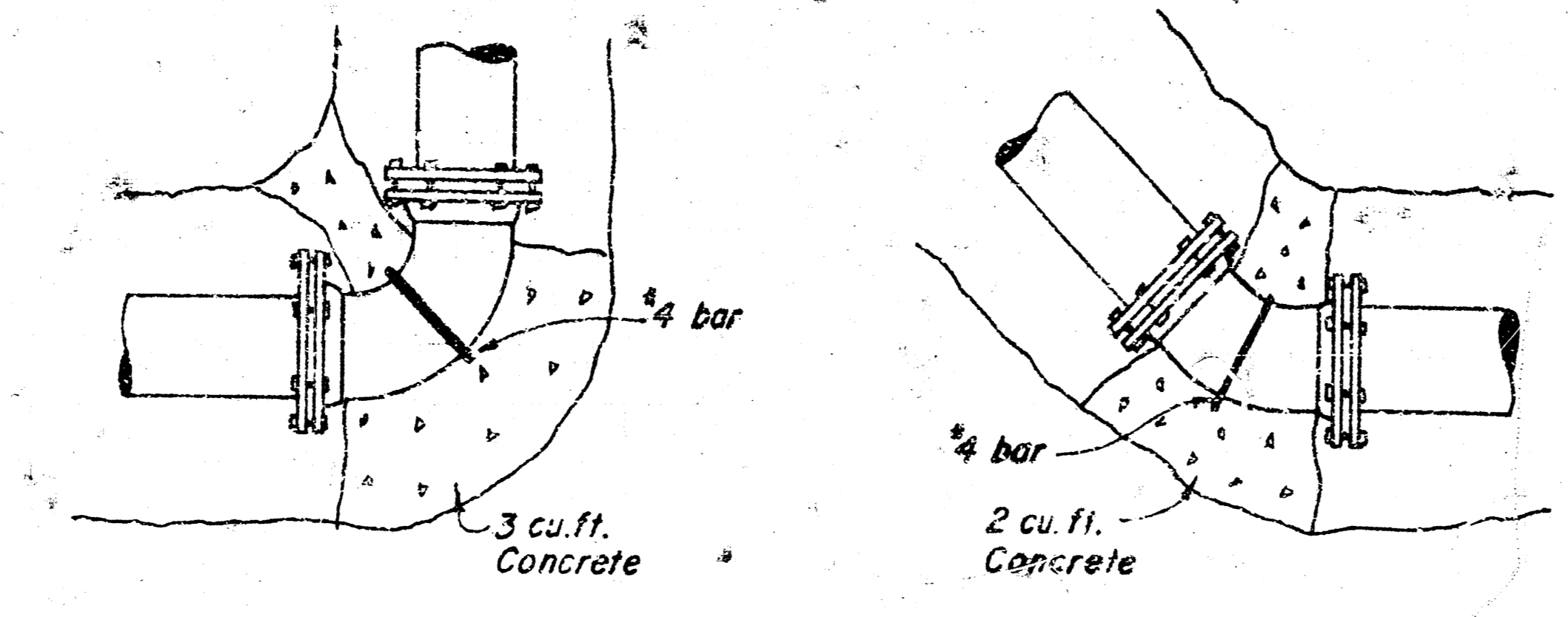
*NOTED TO A
[Illegible text]*

*MOEHRING & ASSOCIATES CONSULTING ENGINEERS
433 S. HYDRAULIC WICHITA, KANSAS*

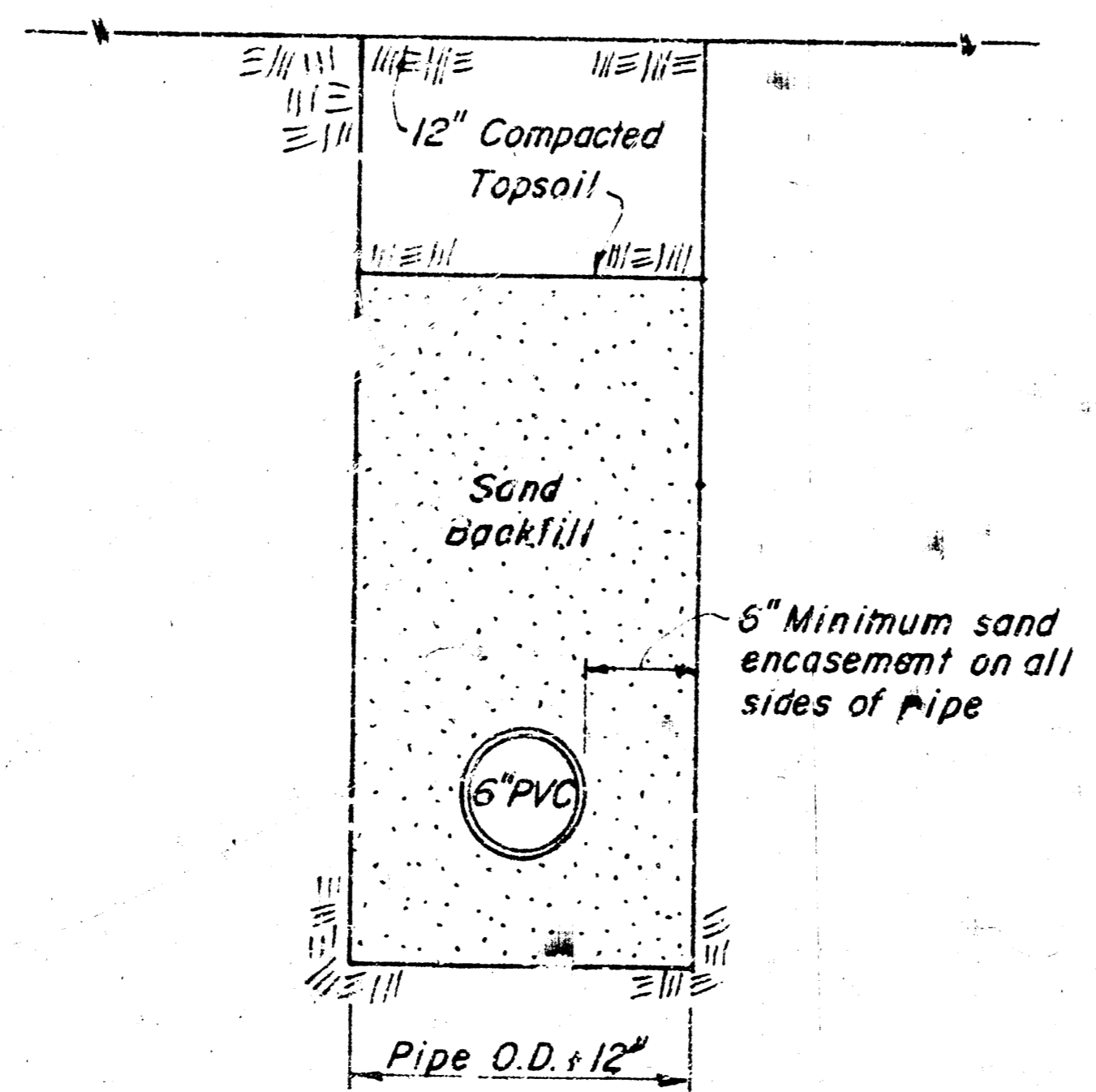




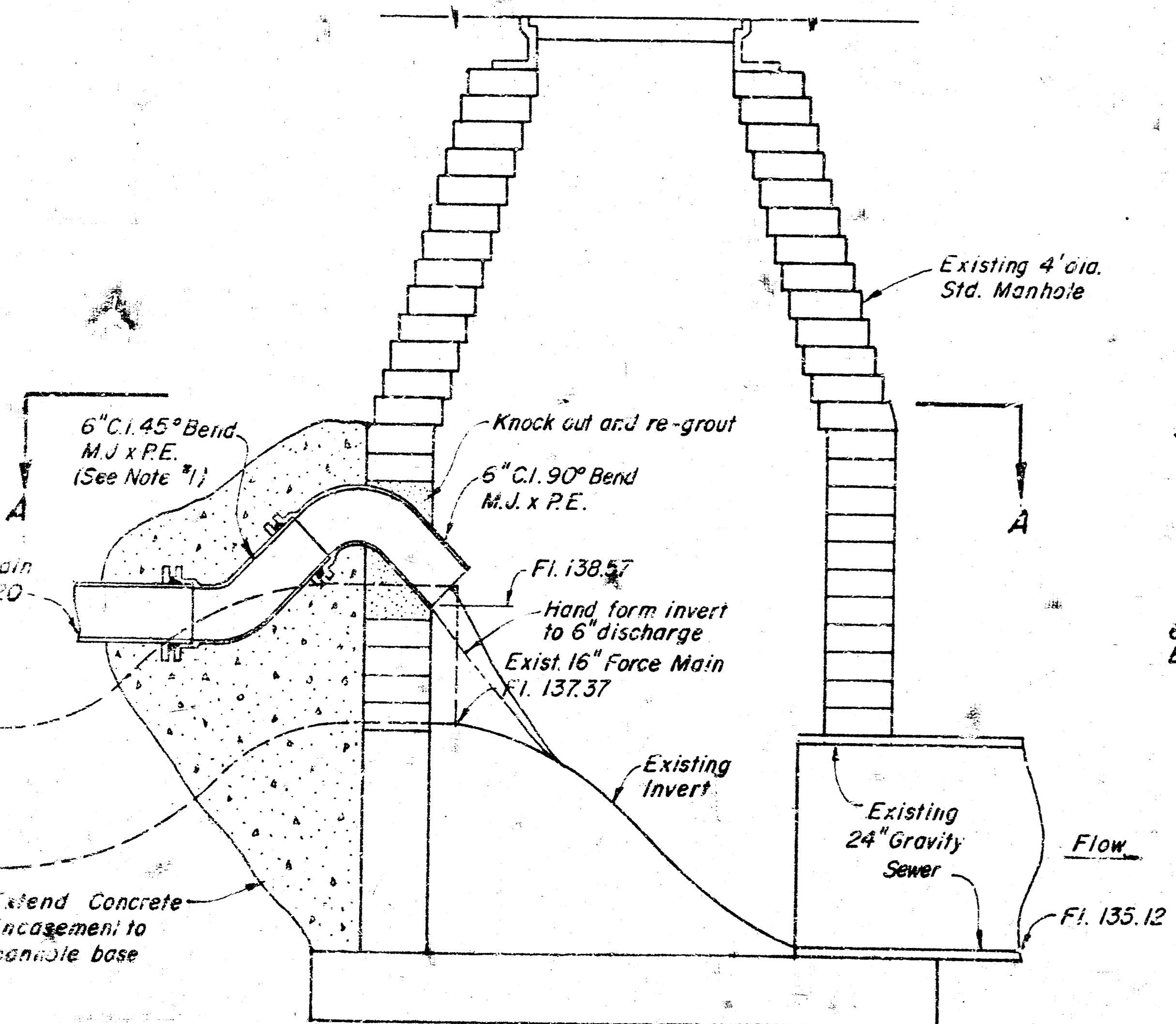
SECTION A
3/4" = 1"



THRUST BLOCK DETAIL
No Scale

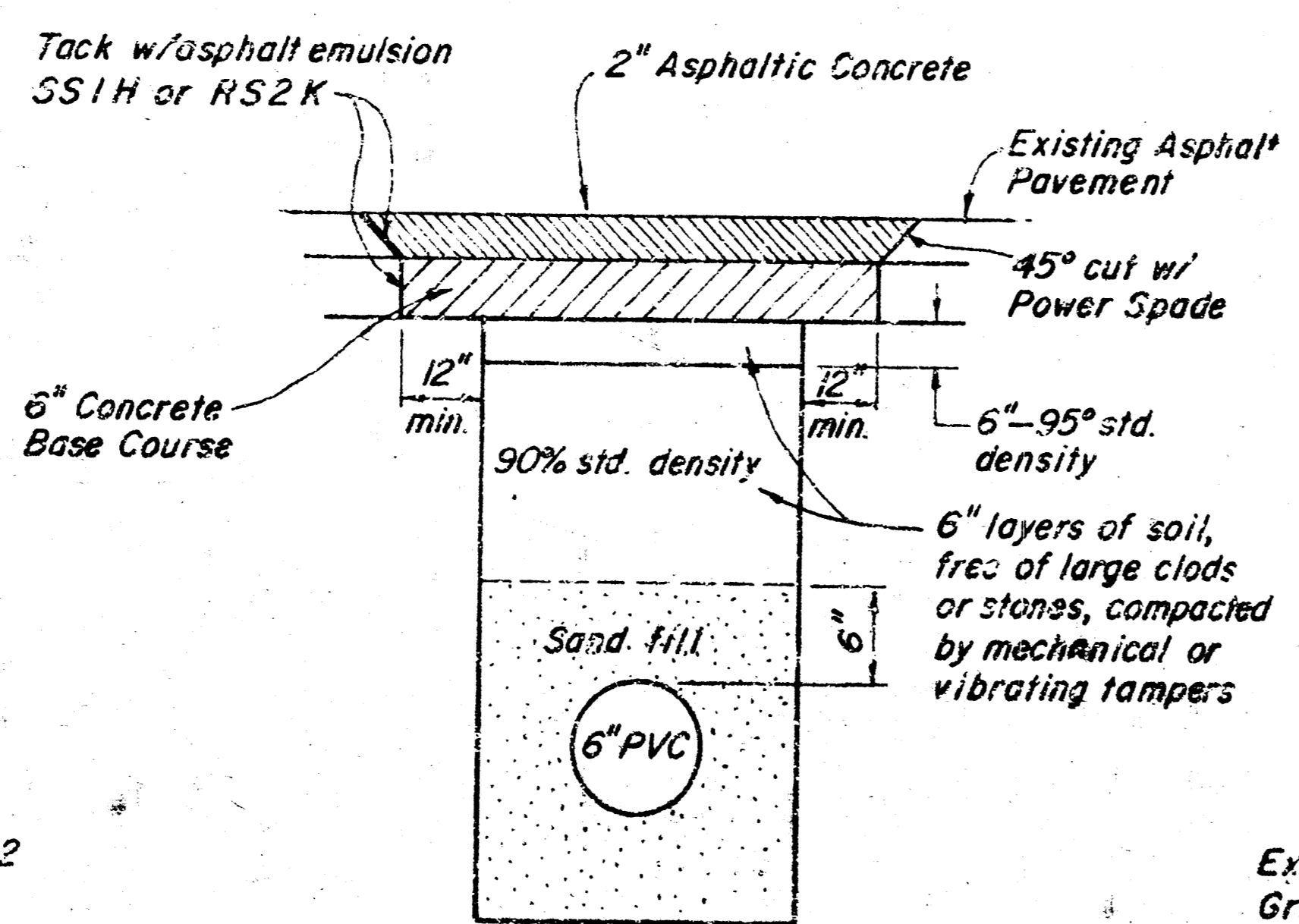


PIPE BEDDING DETAIL
No Scale



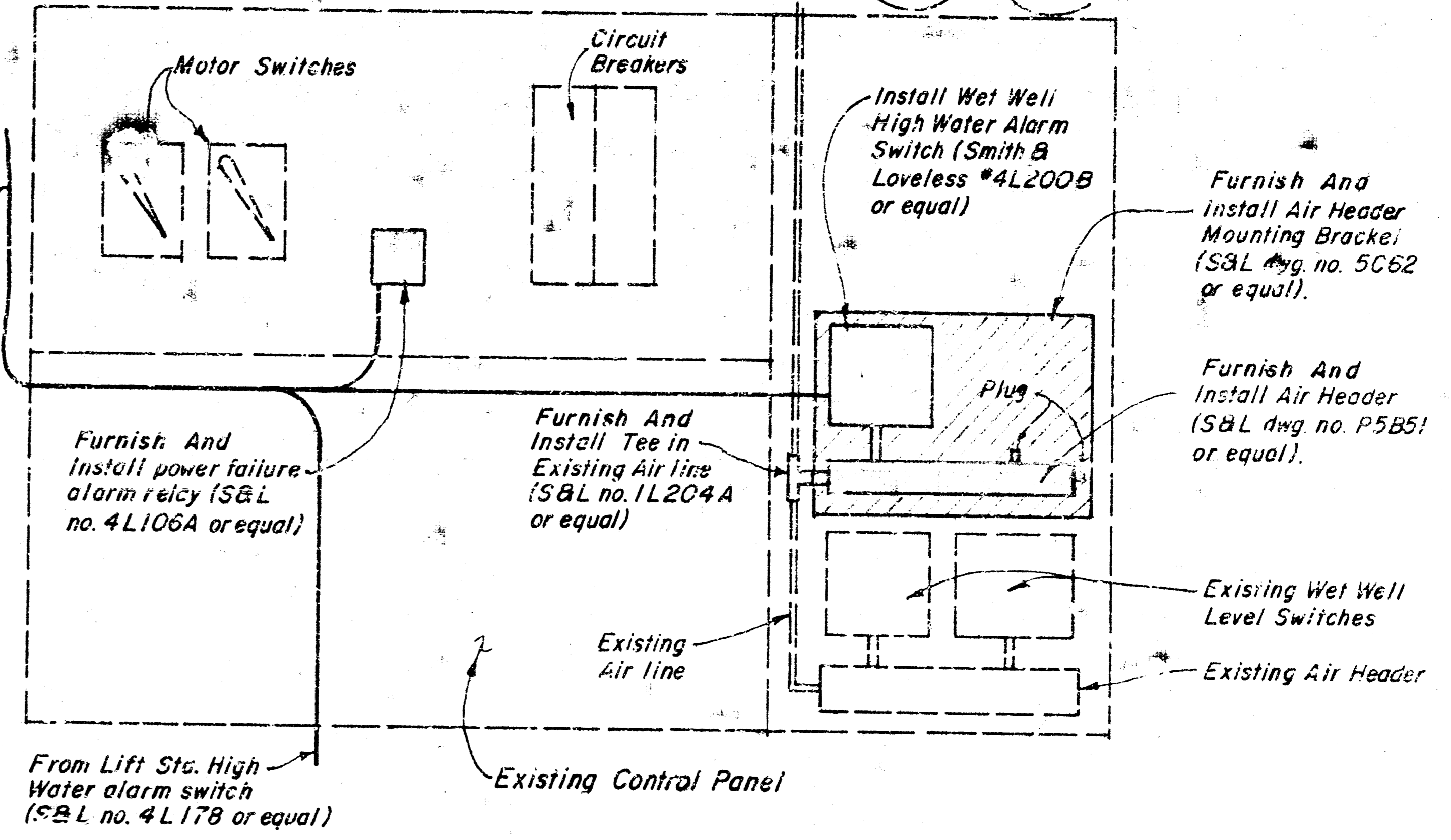
SECTION B
3/4" = 1"

MANHOLE TAP DETAIL

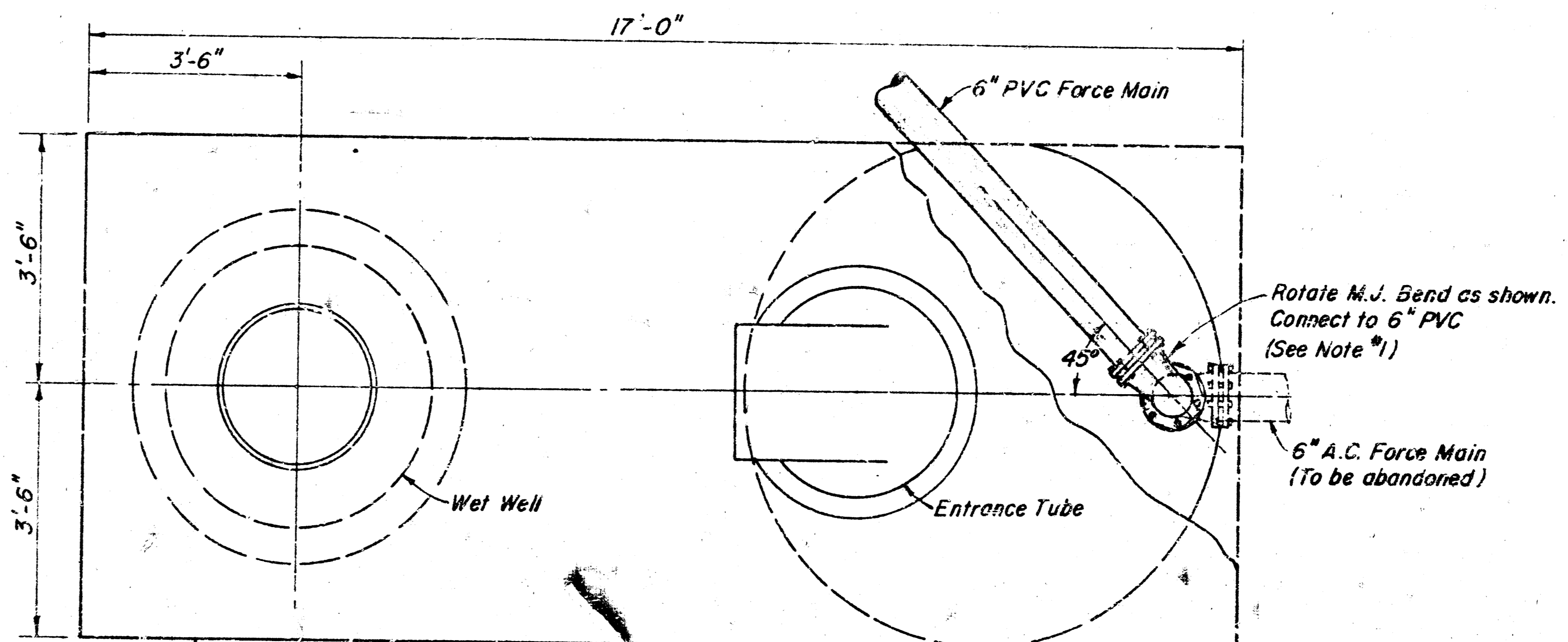


PAVEMENT REPLACEMENT DETAIL
No Scale

Furnish And Install Alarm circuit to City of Wichita alarm system (See note 1)



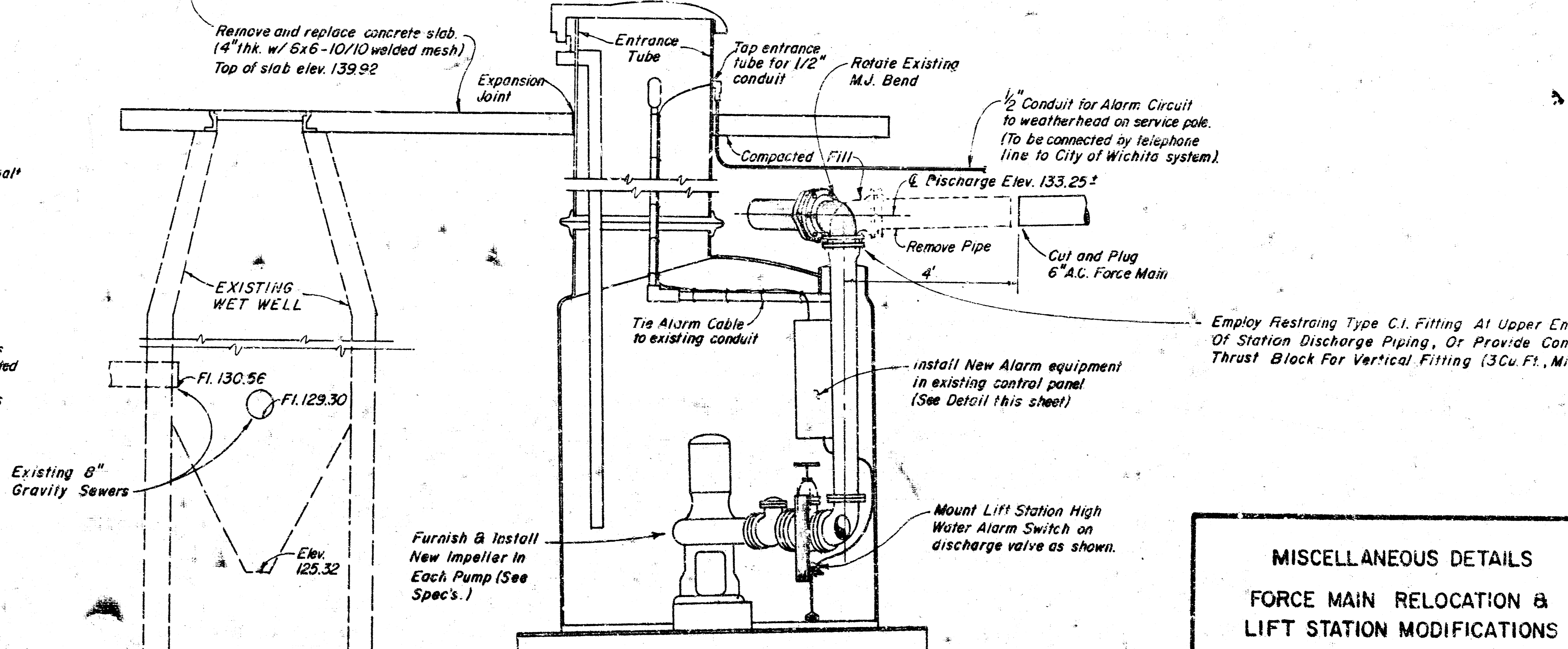
ALARM EQUIPMENT DETAIL (SCHEMATIC)
No Scale



PLAN
No Scale

NOTES

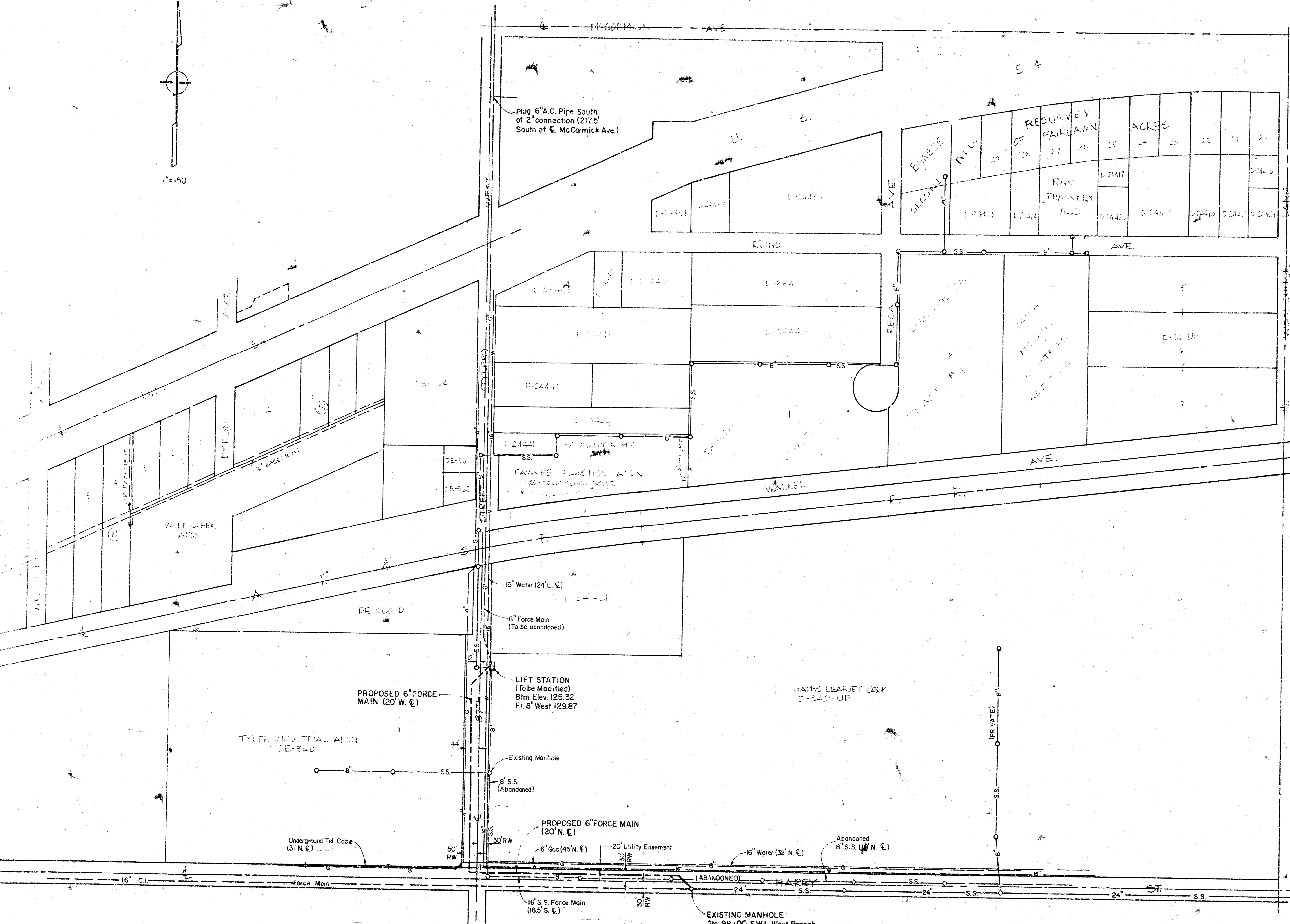
1. All joints of Cast Iron-to-PVC shall be Mechanical Joint with Sleeve and transition gasket for PVC pipe.
2. Alarm wiring shall be provided by contractor through weatherhead (8' above ground on service pole). Connection at service pole by telephone company.



MISCELLANEOUS DETAILS
FORCE MAIN RELOCATION & LIFT STATION MODIFICATIONS
1500 S. TYLER RD.



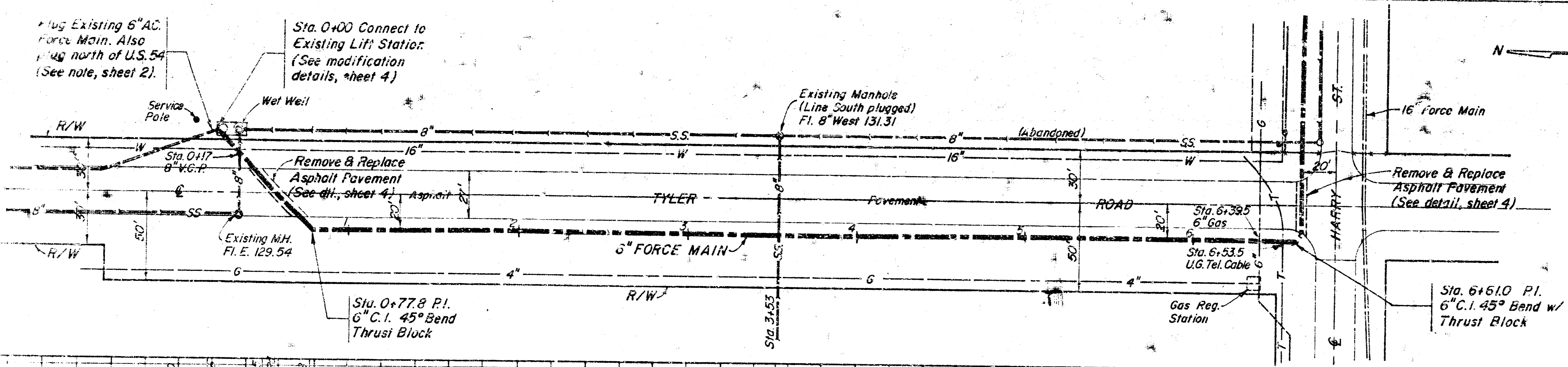
1"=150'



RECURVEY FAIRLAWN		ACRES	
29	28	25	24
27	26	23	22
25	24	21	20
RAY THACKERY ADD		D-2447	
D-2448		D-2449	
D-2450		D-2451	
D-2452		D-2453	
D-2454		D-2455	
D-2456		D-2457	
D-2458		D-2459	
D-2460		D-2461	
D-2462		D-2463	
D-2464		D-2465	
D-2466		D-2467	
D-2468		D-2469	
D-2470		D-2471	
D-2472		D-2473	
D-2474		D-2475	
D-2476		D-2477	
D-2478		D-2479	
D-2480		D-2481	
D-2482		D-2483	
D-2484		D-2485	
D-2486		D-2487	
D-2488		D-2489	
D-2490		D-2491	
D-2492		D-2493	
D-2494		D-2495	
D-2496		D-2497	
D-2498		D-2499	
D-2500		D-2501	
D-2502		D-2503	
D-2504		D-2505	
D-2506		D-2507	
D-2508		D-2509	
D-2510		D-2511	
D-2512		D-2513	
D-2514		D-2515	
D-2516		D-2517	
D-2518		D-2519	
D-2520		D-2521	
D-2522		D-2523	
D-2524		D-2525	
D-2526		D-2527	
D-2528		D-2529	
D-2530		D-2531	
D-2532		D-2533	
D-2534		D-2535	
D-2536		D-2537	
D-2538		D-2539	
D-2540		D-2541	
D-2542		D-2543	
D-2544		D-2545	
D-2546		D-2547	
D-2548		D-2549	
D-2550		D-2551	
D-2552		D-2553	
D-2554		D-2555	
D-2556		D-2557	
D-2558		D-2559	
D-2560		D-2561	
D-2562		D-2563	
D-2564		D-2565	
D-2566		D-2567	
D-2568		D-2569	
D-2570		D-2571	
D-2572		D-2573	
D-2574		D-2575	
D-2576		D-2577	
D-2578		D-2579	
D-2580		D-2581	
D-2582		D-2583	
D-2584		D-2585	
D-2586		D-2587	
D-2588		D-2589	
D-2590		D-2591	
D-2592		D-2593	
D-2594		D-2595	
D-2596		D-2597	
D-2598		D-2599	
D-2600		D-2601	
D-2602		D-2603	
D-2604		D-2605	
D-2606		D-2607	
D-2608		D-2609	
D-2610		D-2611	
D-2612		D-2613	
D-2614		D-2615	
D-2616		D-2617	
D-2618		D-2619	
D-2620		D-2621	
D-2622		D-2623	
D-2624		D-2625	
D-2626		D-2627	
D-2628		D-2629	
D-2630		D-2631	
D-2632		D-2633	
D-2634		D-2635	
D-2636		D-2637	
D-2638		D-2639	
D-2640		D-2641	
D-2642		D-2643	
D-2644		D-2645	
D-2646		D-2647	
D-2648		D-2649	
D-2650		D-2651	
D-2652		D-2653	
D-2654		D-2655	
D-2656		D-2657	
D-2658		D-2659	
D-2660		D-2661	
D-2662		D-2663	
D-2664		D-2665	
D-2666		D-2667	
D-2668		D-2669	
D-2670		D-2671	
D-2672		D-2673	
D-2674		D-2675	
D-2676		D-2677	
D-2678		D-2679	
D-2680		D-2681	
D-2682		D-2683	
D-2684		D-2685	
D-2686		D-2687	
D-2688		D-2689	
D-2690		D-2691	
D-2692		D-2693	
D-2694		D-2695	
D-2696		D-2697	
D-2698		D-2699	
D-2700		D-2701	
D-2702		D-2703	
D-2704		D-2705	
D-2706		D-2707	
D-2708		D-2709	
D-2710		D-2711	
D-2712		D-2713	
D-2714		D-2715	
D-2716		D-2717	
D-2718		D-2719	
D-2720		D-2721	
D-2722		D-2723	
D-2724		D-2725	
D-2726		D-2727	
D-2728		D-2729	
D-2730		D-2731	
D-2732		D-2733	
D-2734		D-2735	
D-2736		D-2737	
D-2738		D-2739	
D-2740		D-2741	
D-2742		D-2743	
D-2744		D-2745	
D-2746		D-2747	
D-2748		D-2749	
D-2750		D-2751	
D-2752		D-2753	
D-2754		D-2755	
D-2756		D-2757	
D-2758		D-2759	
D-2760		D-2761	
D-2762		D-2763	
D-2764		D-2765	
D-2766		D-2767	
D-2768		D-2769	
D-2770		D-2771	
D-2772		D-2773	
D-2774		D-2775	
D-2776		D-2777	
D-2778		D-2779	
D-2780		D-2781	
D-2782		D-2783	
D-2784		D-2785	
D-2786		D-2787	
D-2788		D-2789	
D-2790		D-2791	
D-2792		D-2793	
D-2794		D-2795	
D-2796		D-2797	
D-2798		D-2799	
D-2800		D-2801	
D-2802		D-2803	
D-2804		D-2805	
D-2806		D-2807	
D-2808		D-2809	
D-2810		D-2811	
D-2812		D-2813	
D-2814		D-2815	
D-2816		D-2817	
D-2818		D-2819	
D-2820		D-2821	
D-2822		D-2823	
D-2824		D-2825	
D-2826		D-2827	
D-2828		D-2829	
D-2830		D-2831	
D-2832		D-2833	
D-2834		D-2835	
D-2836		D-2837	
D-2838		D-2839	
D-2840		D-2841	
D-2842		D-2843	
D-2844		D-2845	
D-2846		D-2847	
D-2848		D-2849	
D-2850		D-2851	
D-2852		D-2853	
D-2854		D-2855	
D-2856		D-2857	
D-2858		D-2859	
D-2860		D-2861	
D-2862		D-2863	
D-2864		D-2865	
D-2866		D-2867	
D-2868		D-2869	
D-2870		D-2871	
D-2872		D-2873	
D-2874		D-2875	
D-2876		D-2877	
D-2878		D-2879	
D-2880		D-2881	
D-2882		D-2883	
D-2884		D-2885	
D-2886		D-2887	
D-2888		D-2889	
D-2890		D-2891	
D-2892		D-2893	
D-2894		D-2895	
D-2896		D-2897	
D-2898		D-2899	
D-2900		D-2901	
D-2902		D-2903	
D-2904		D-2905	
D-2906		D-2907	
D-2908		D-2909	
D-2910		D-2911	
D-2912		D-2913	
D-2914		D-2915	
D-2916		D-2917	
D-2918		D-2919	
D-2920		D-2921	
D-2922		D-2923	
D-2924		D-2925	
D-2926		D-2927	
D-2928		D-2929	
D-2930		D-2931	
D-2932		D-2933	
D-2934		D-2935	
D-2936		D-2937	
D-2938		D-2939	
D-2940		D-2941	
D-2942		D-2943	
D-2944		D-2945	
D-2946		D-2947	
D-2948		D-2949	
D-2950		D-2951	
D-2952		D-2953	
D-2954		D-2955	
D-2956		D-2957	
D-2958		D-2959	
D-2960		D-2961	
D-2962		D-2963	
D-2964		D-2965	
D-2966		D-2967	
D-2968		D-2969	
D-2970		D-2971	
D-2972		D-2973	
D-2974		D-2975	
D-2976		D-2977	
D-2978		D-2979	
D-2980		D-2981	
D-2982		D-2983	
D-2984		D-2985	
D-2986		D-2987	
D-2988		D-2989	
D-2990		D-2991	
D-2992		D-2993	
D-2994		D-2995	
D-2996		D-2997	
D-2998		D-2999	
D-3000		D-3001	
D-3002		D-3003	
D-3004		D-3005	
D-3006		D-3007	
D-3008		D-3009	
D-3010		D-3011	
D-3012		D-3013	
D-3014		D-3015	
D-3016		D-3017	
D-3018		D-3019	
D-3020		D-3021	
D-3022		D-3023	
D-3024		D-3025	
D-3026		D-3027	
D-3028		D-3029	
D-3030		D-3031	
D-3032		D-3033	
D-3034		D-3035	
D-3036		D-3037	
D-3038		D-3039	
D-3040		D-3041	
D-3042		D-3043	
D-3044		D-3045	
D-3046		D-3047	
D-3048		D-3049	
D-3050		D-3051	
D-3052		D-3053	
D-3054			

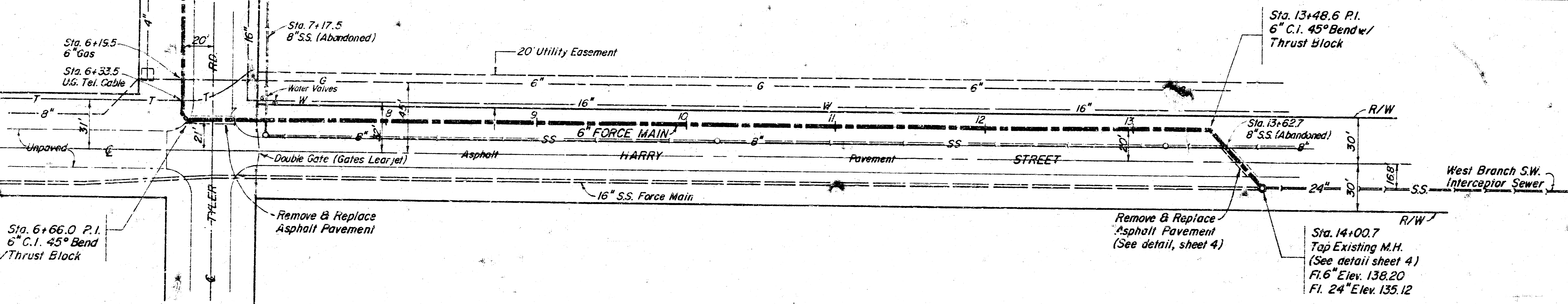
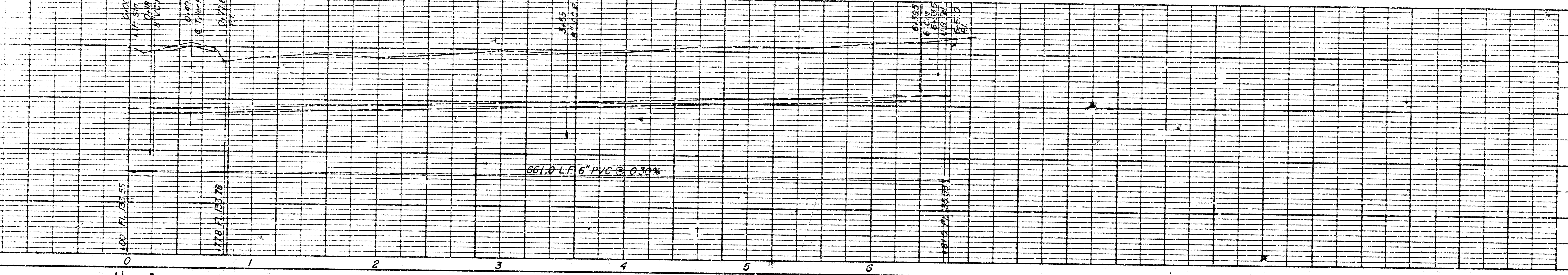
Plug Existing 6" AC Force Main. Also plug north of U.S. 54 (See note, sheet 2).

Sta. 0+00 Connect to Existing Lift Station (See modification details, sheet 4)



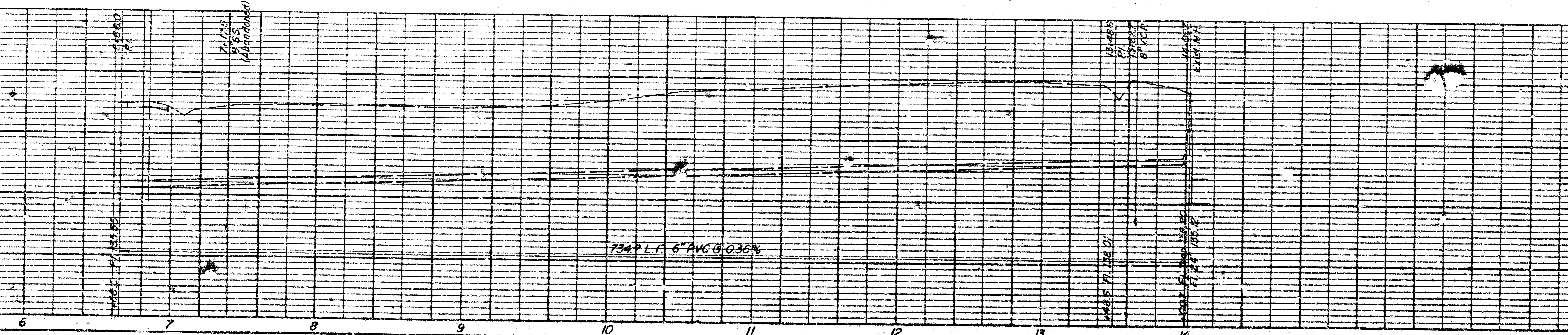
NOTES

1. Pipe material to be SDR-21 6" PVC w/o-ring joints
2. Pipe bends to be Cast Iron, Mech. Joint, w/Sleeve and Transition Gasket for PVC pipe.



SCALE
1" = 40' Horz.
1" = 5' Vert.

BENCH MARK
City of Wichita disc, Elev. 141.55
44' West and 39' South of E
Harry St. & Tyler Rd.



PLAN & PROFILE
FORCE MAIN RELOCATION & LIFT STATION MODIFICATIONS
1000 S TYLER RD.
WICHITA, KANSAS

Project No. 2018-261-245-8063-000-008
Mothers & Associates Consulting Engineers
433 S. Hydraulic Wichita, Kansas
Sheet 3 of 4