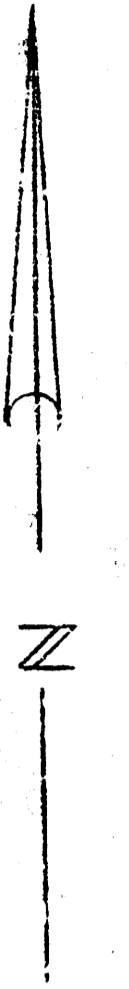


1" = 20'



REVISED JULY 24, 1972 TO SHOW ACCESS

10

HOLIDAY INN-EAST LIGHTNER ADDITION

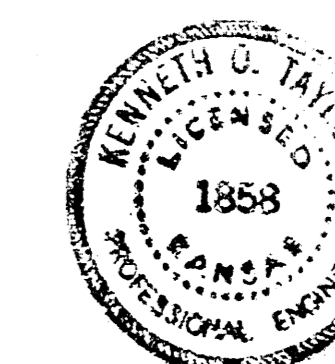
BOX CULVERT
SANITARY SEWERS
STORM WATER SEWERS
RECONSTRUCTION OF STREET
SIDEWALKS

INDEX

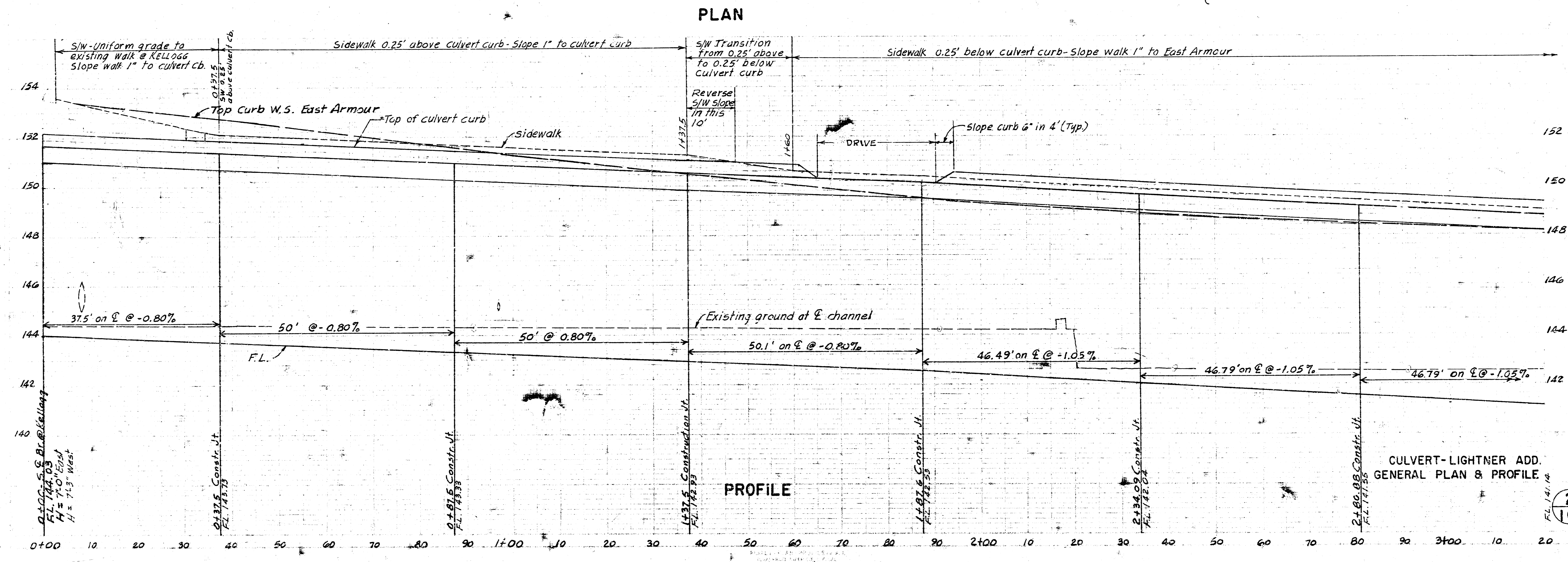
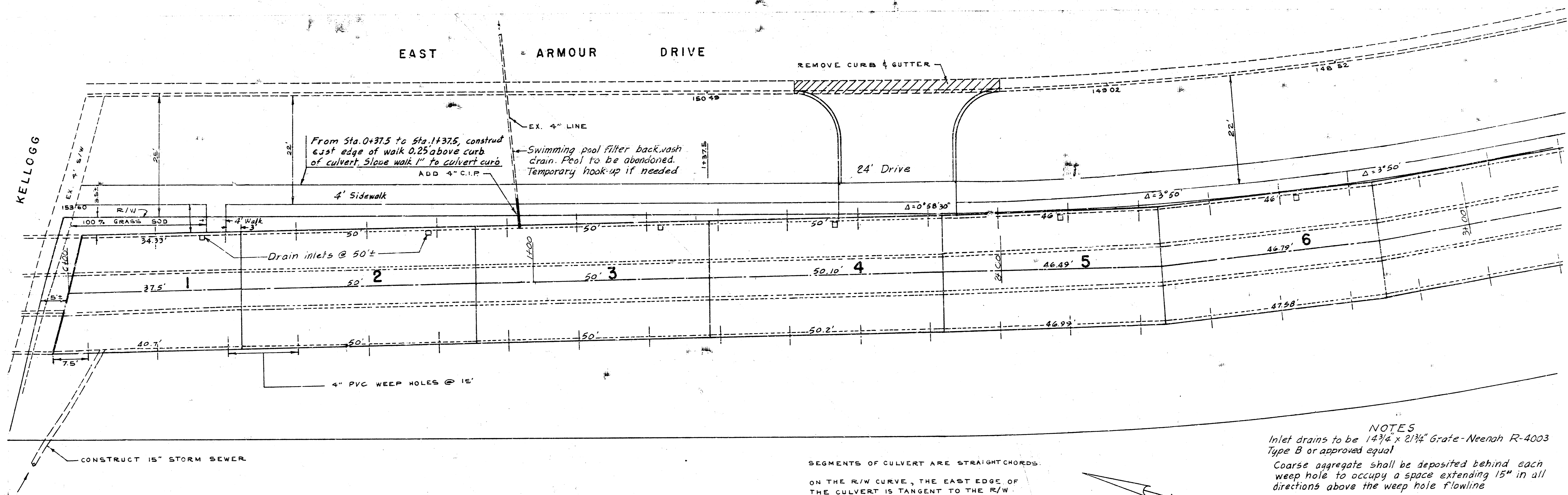
1. SITE PLAN
2. & 3. - CULVERT-GENERAL PLAN & PROFILE
4. CULVERT- LIGHTNER ADD.
5. CULVERT & STREET- ORME & ARMOUR
6. CULVERT REINF.- ORME & ARMOUR
7. STORM SEWERS
8. SANITARY SEWERS
9. CROSS SECTIONS
10. HANDRAIL, SPEC. PAVE. REINF., BENT BARS

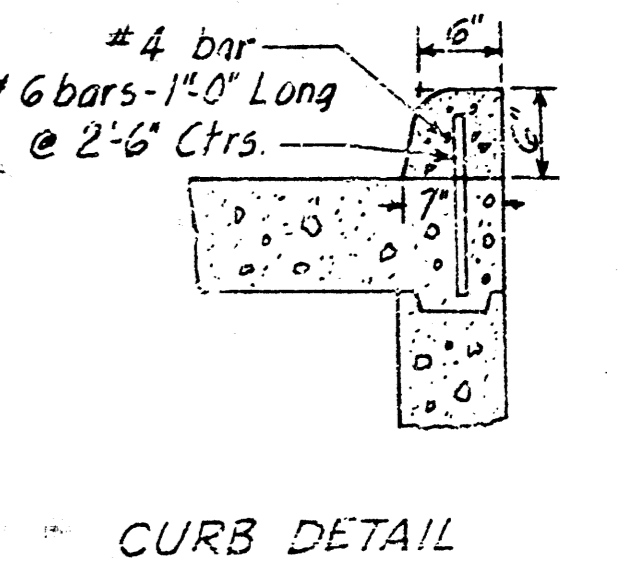
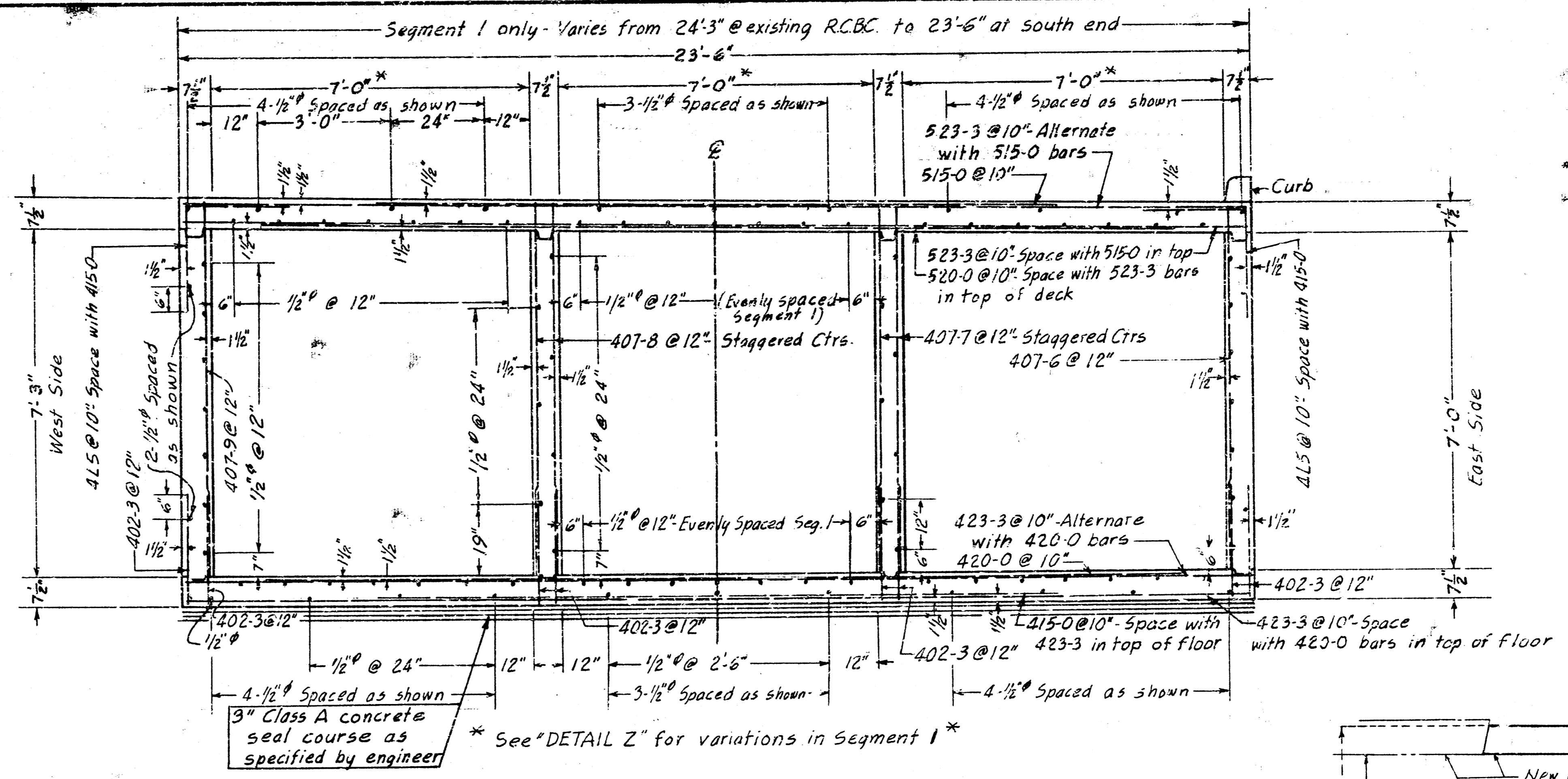
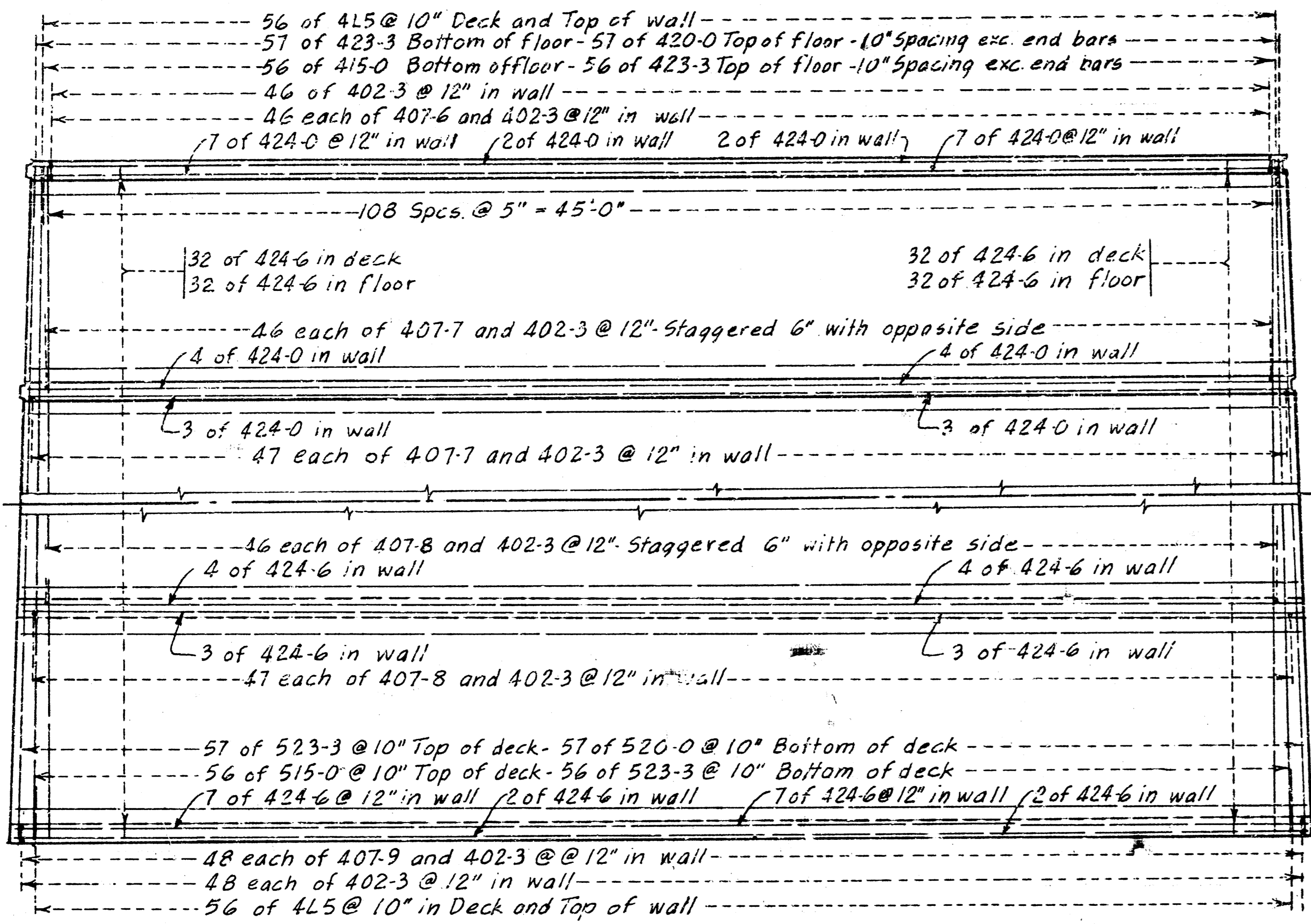
CONTRACTOR
This project will be constructed under
the supervision of the CITY ENGINEER
of the CITY OF WICHITA. The CITY
ENGINEER will reimburse the City of
Wichita for all cost of Engineering, Plans,
and Construction.

APPROVED AS NOTED
By CITY ENGINEER OF WICHITA
Sanitary Sewers *[Signature]*
Storm Sewers *[Signature]*
Driveway Approaches *[Signature]*



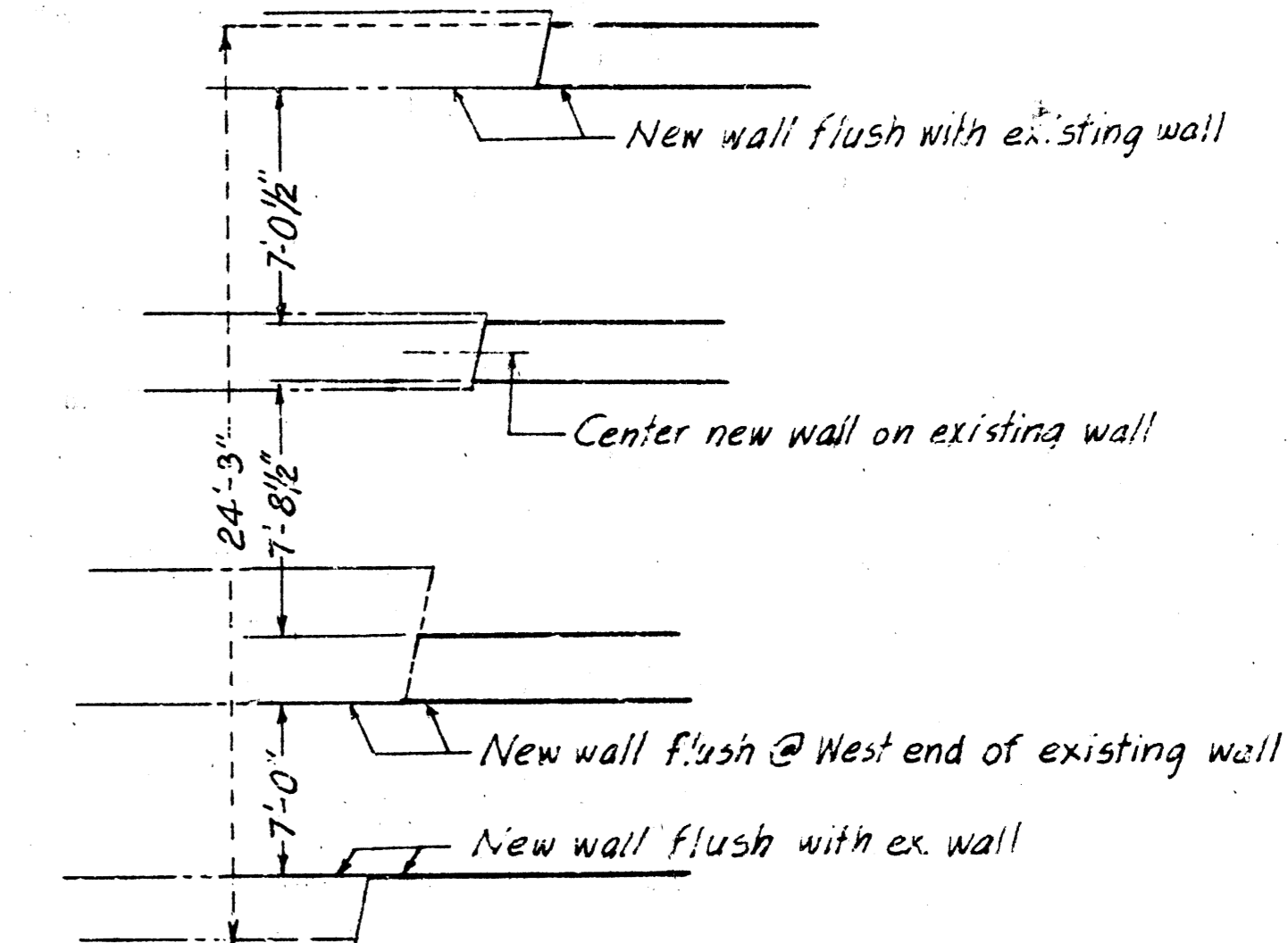
K. O. TAYLOR, P.E.
AUGUST, 1971



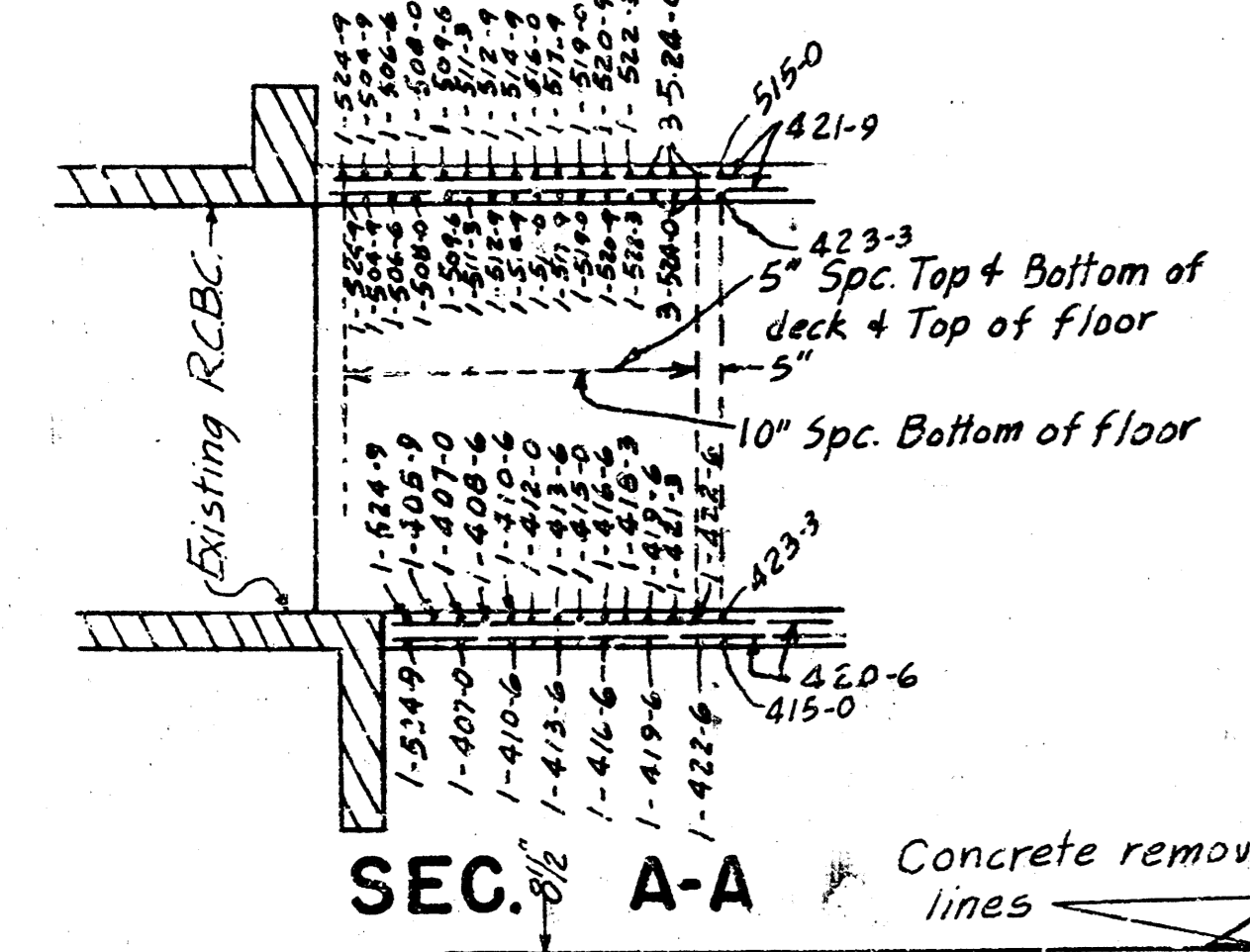


TYPICAL SECTION

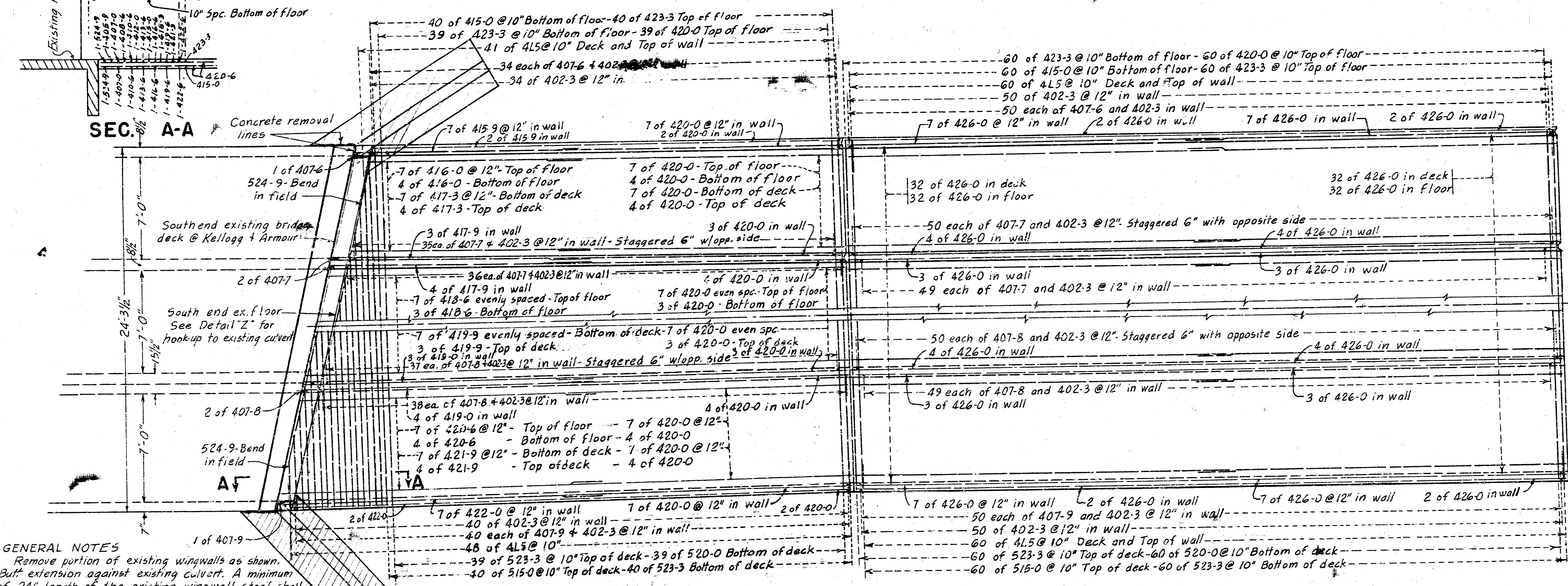
Notes: Bevel all exposed edges with 3/4" triangular moulding unless otherwise noted.
See Sheets 2 and 3 for location of inlets in deck and for location of weep holes.
See Sheet 7 for location of storm water pipe entrances.



DETAIL Z



SEG. 5-6-7-8-9-10 PLAN



SEGMENT I

PLAN

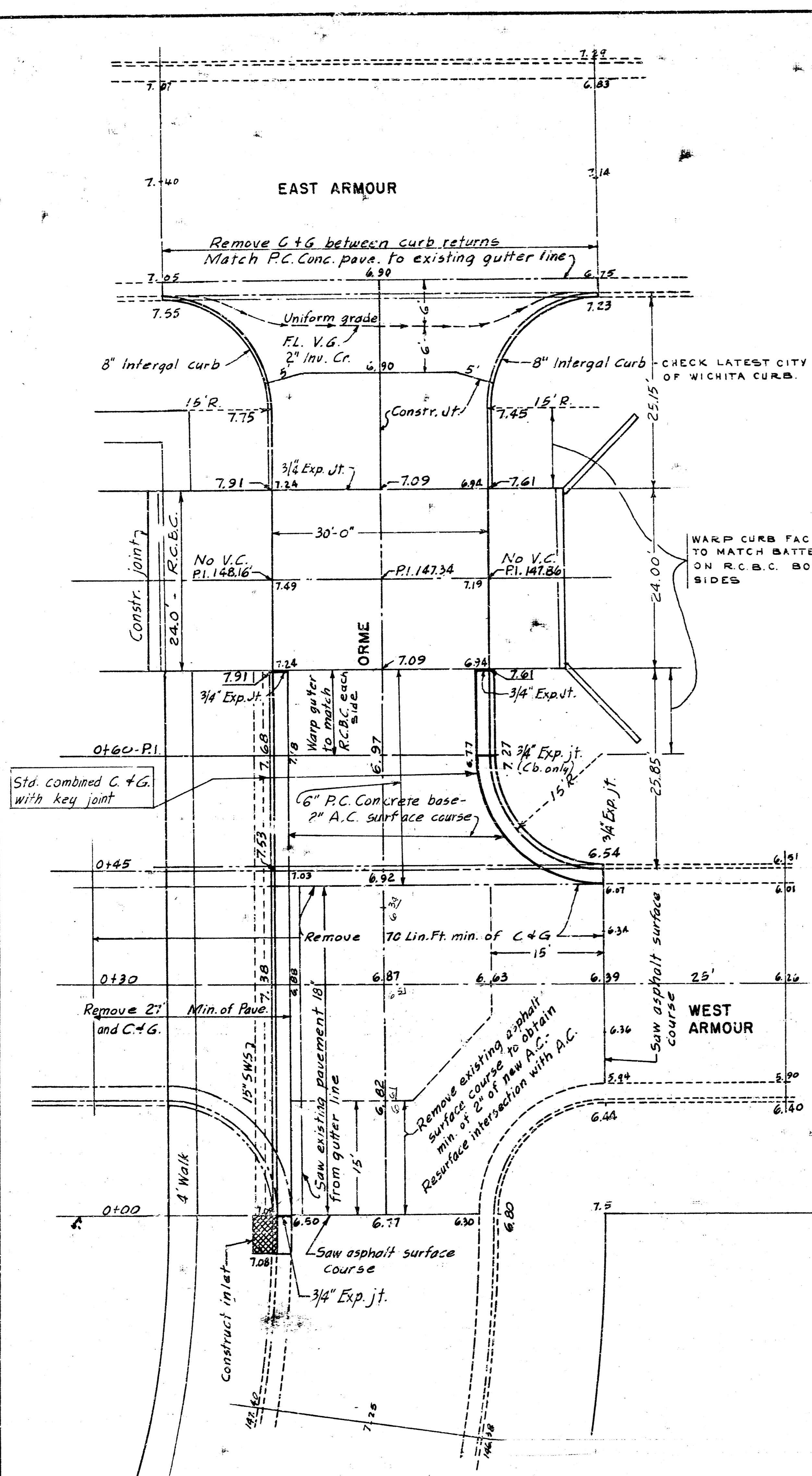
SEGMENTS 2, 3 & 4

GENERAL NOTES
Remove portion of existing wingwalls as shown. Butt extension against existing culvert. A minimum of 24" length of the existing wingwall steel shall be left intact and shall be cleaned and straightened to bond into the new concrete.
All existing concrete surfaces adjacent to new concrete shall be thoroughly cleaned and brushed, and shall be watersoaked for 24 hours prior to placing new concrete.

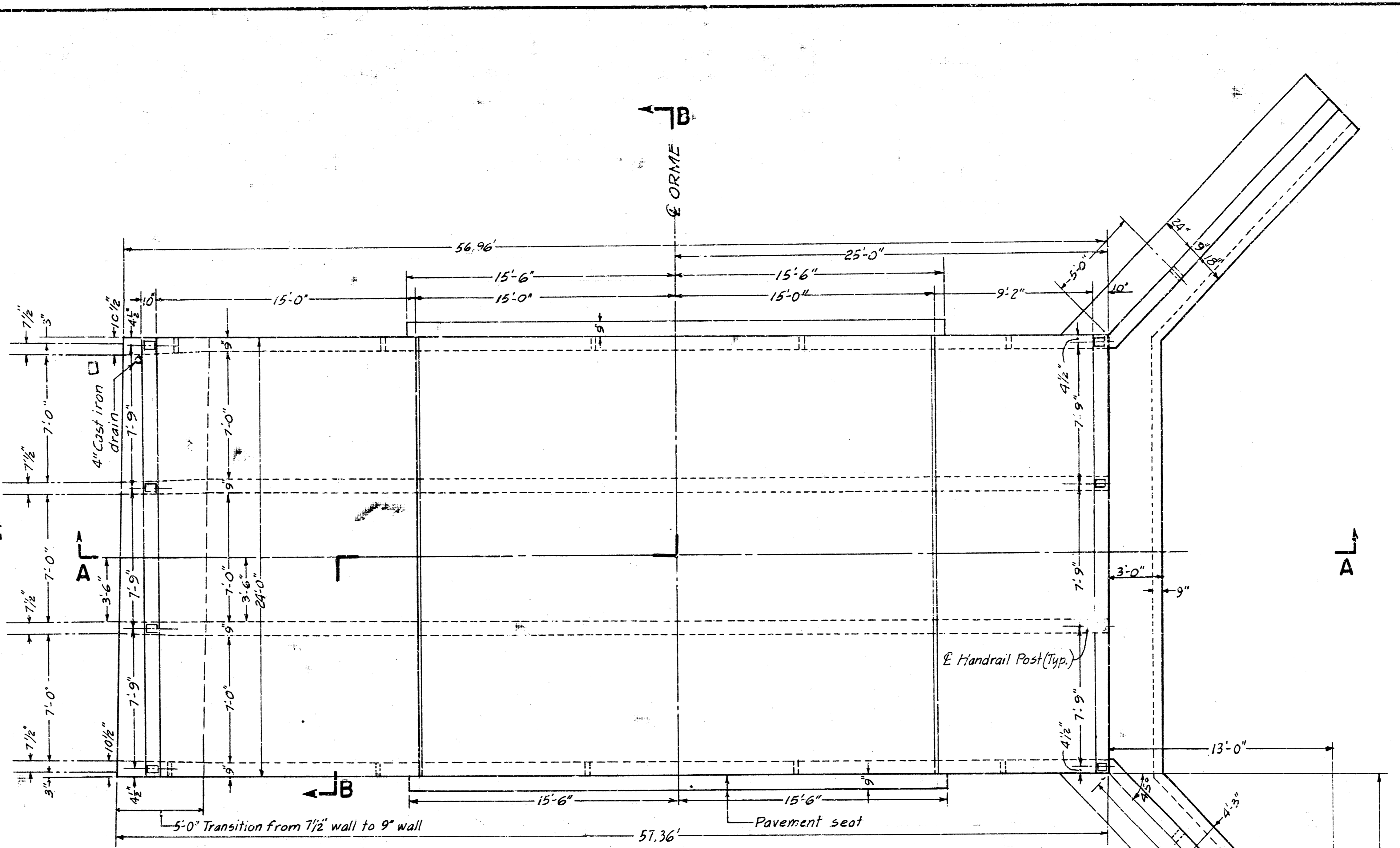
R.C.B.C.- LIGHTNER ADDITION

4
10

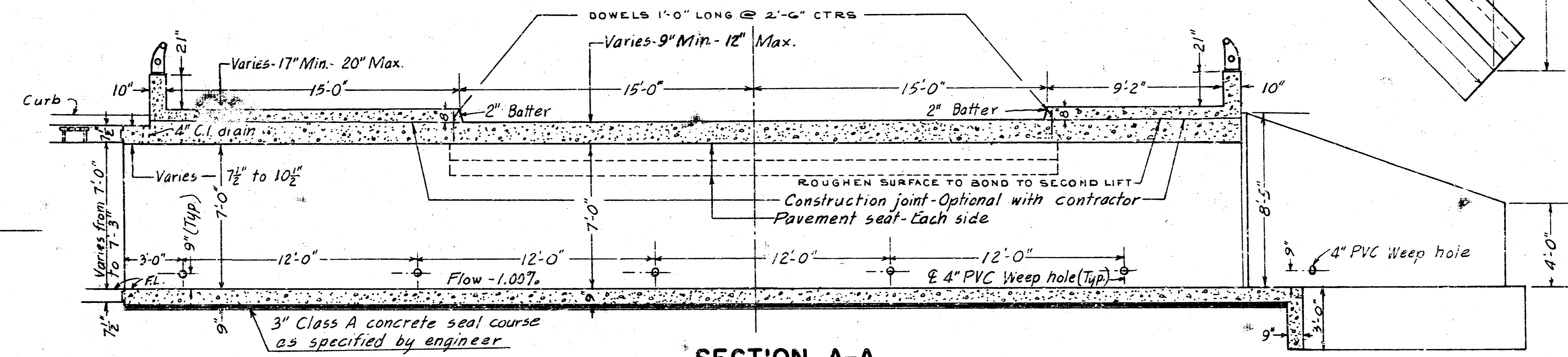
SCALE	REVISIONS	BY	DATE



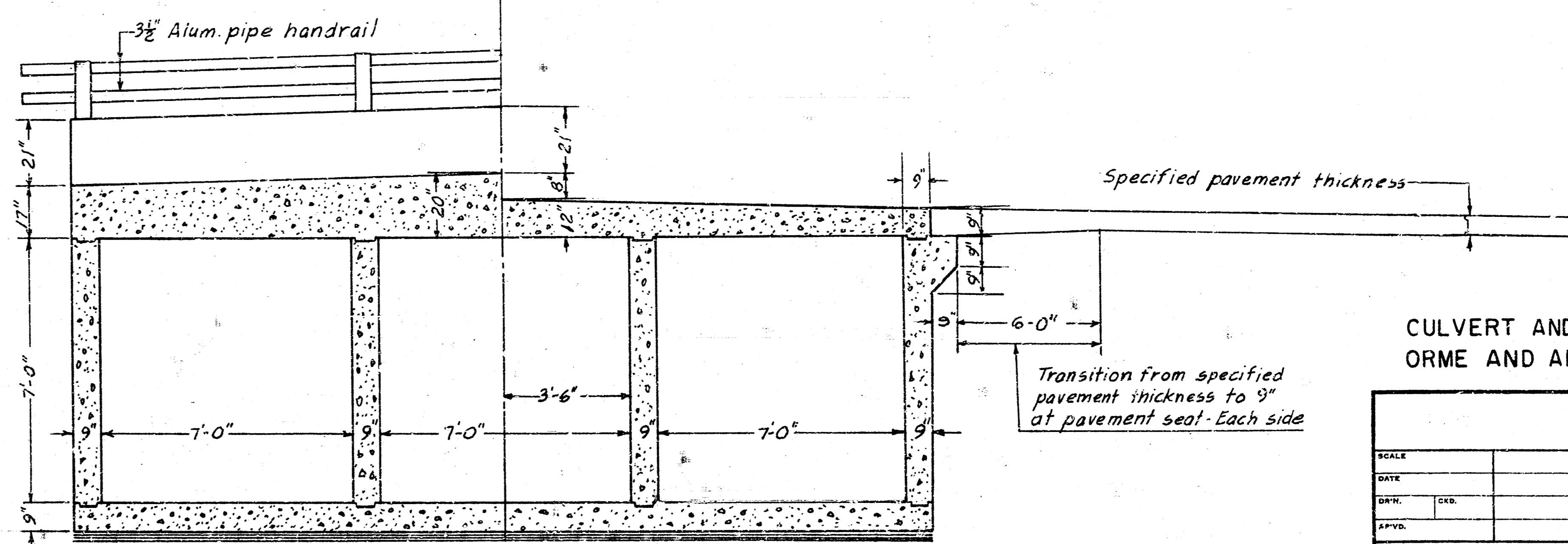
PLAN INTERSECTION-ORME & ARMOUR



PLAN- R.C.B.C.
Handrail not shown



SECTION A-A

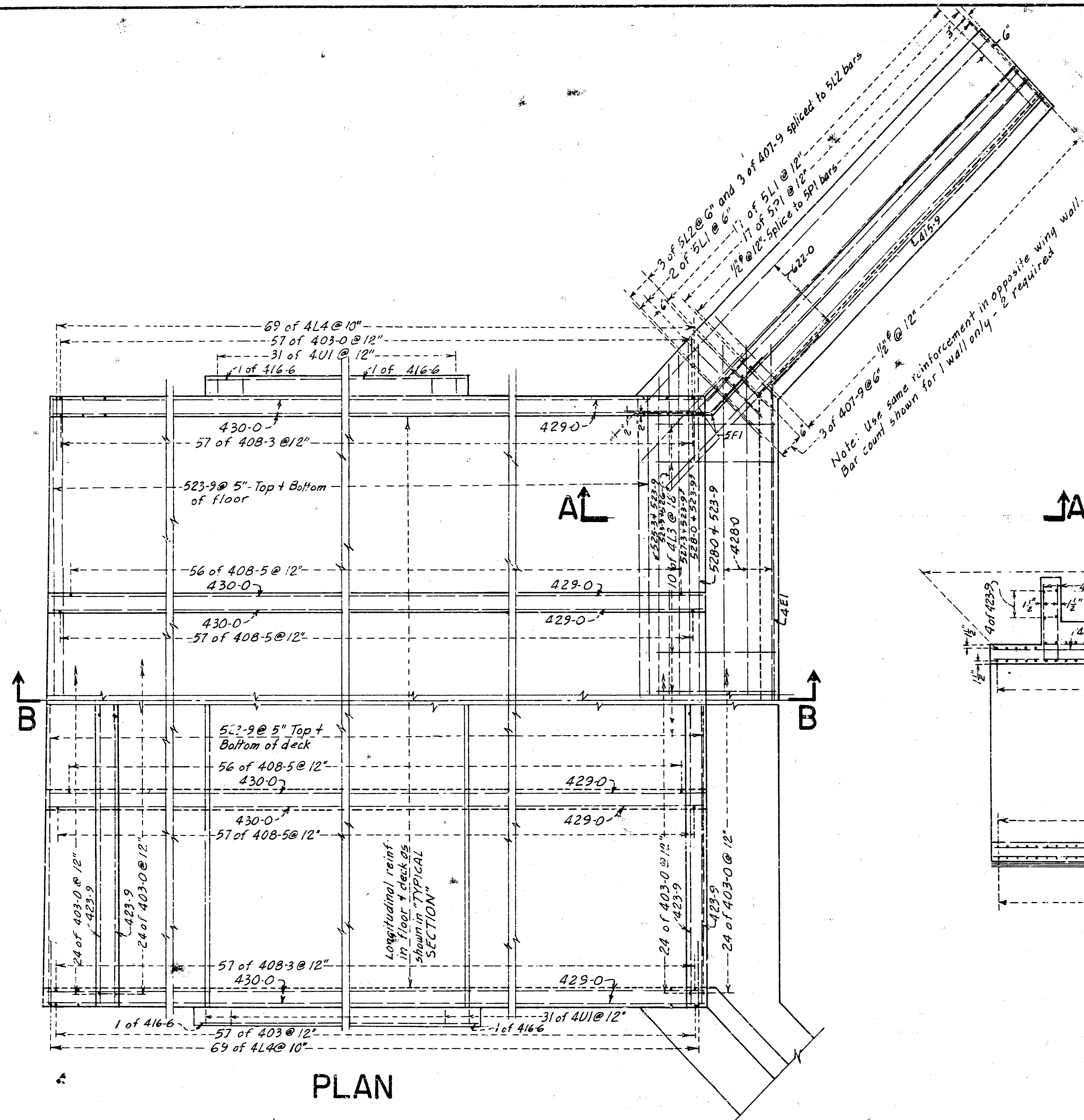


SECTION B-B

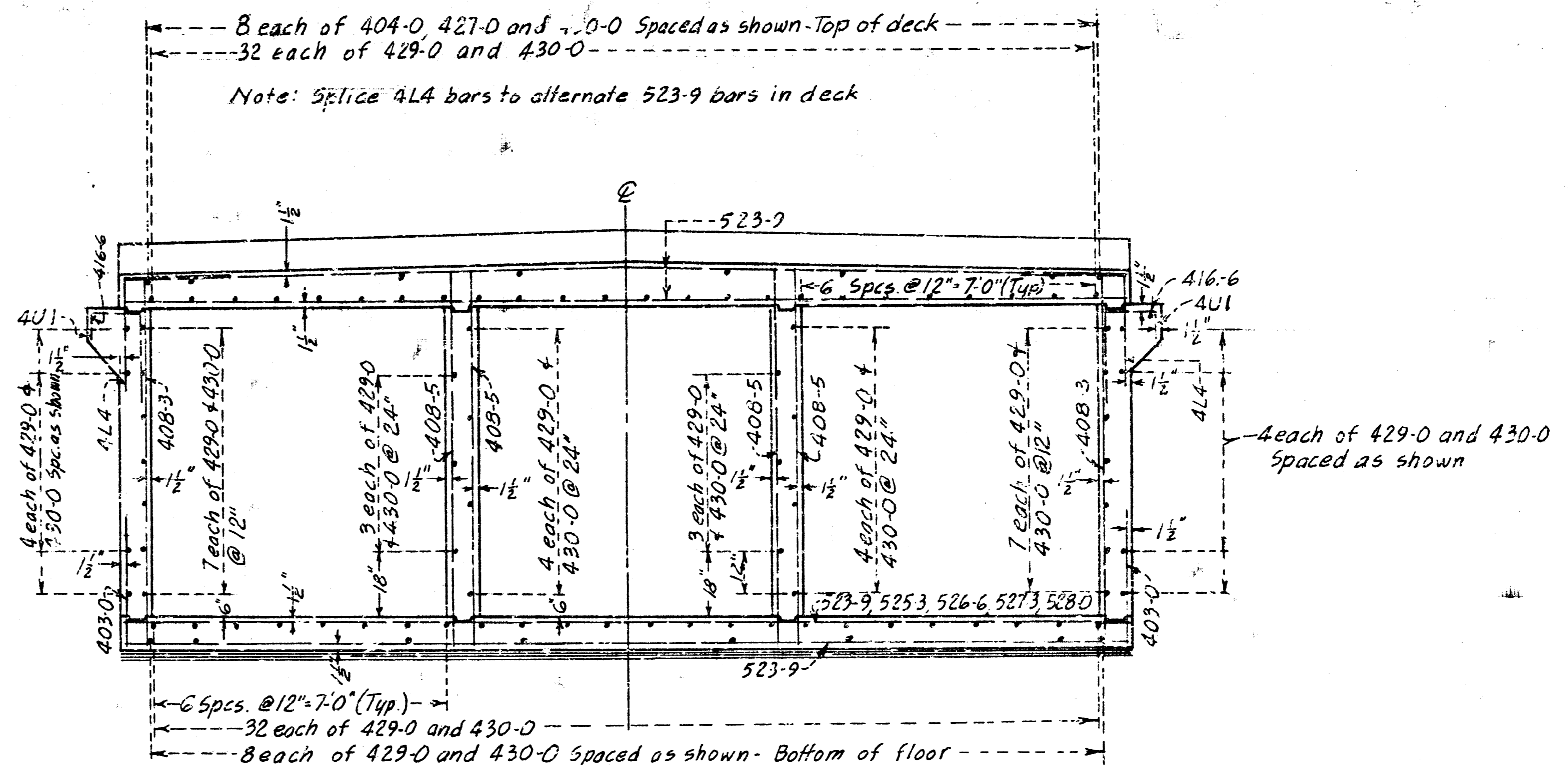
CULVERT AND STREET
ORME AND ARMOUR

5
10

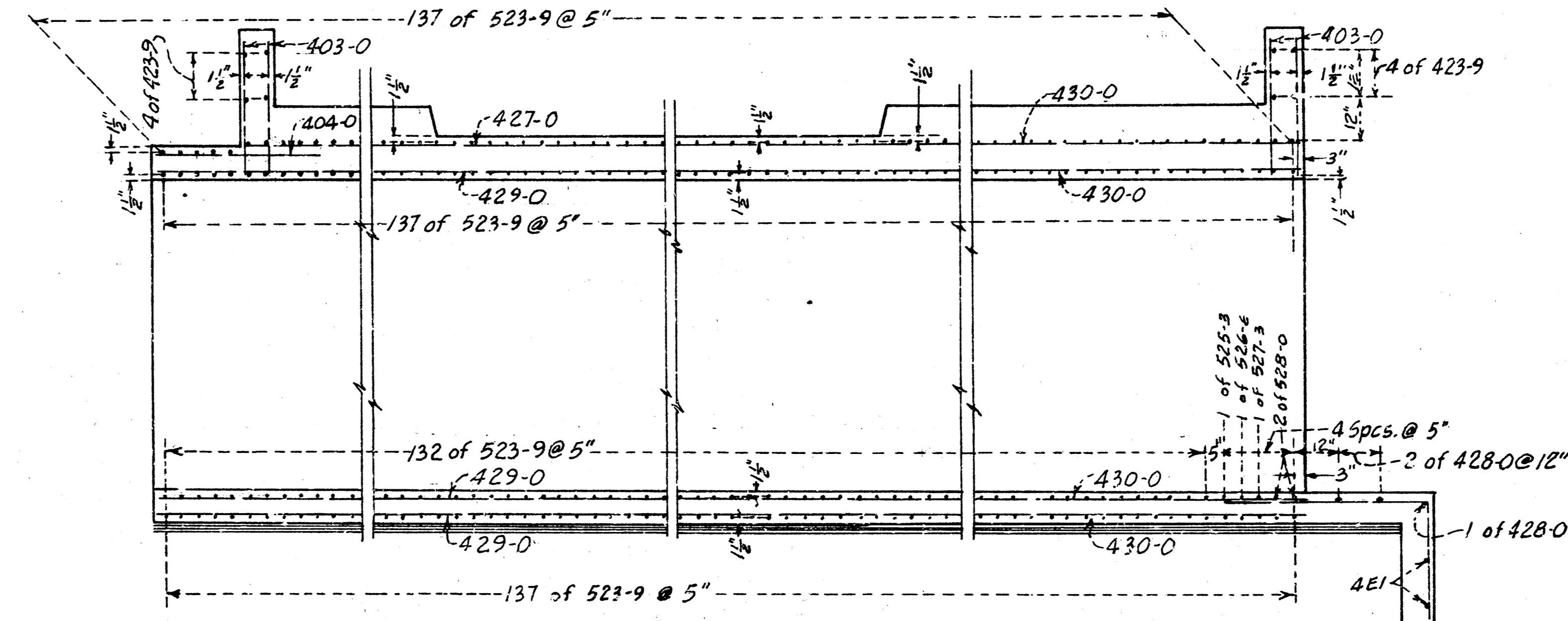
SCALE	REVISIONS	BY	DATE



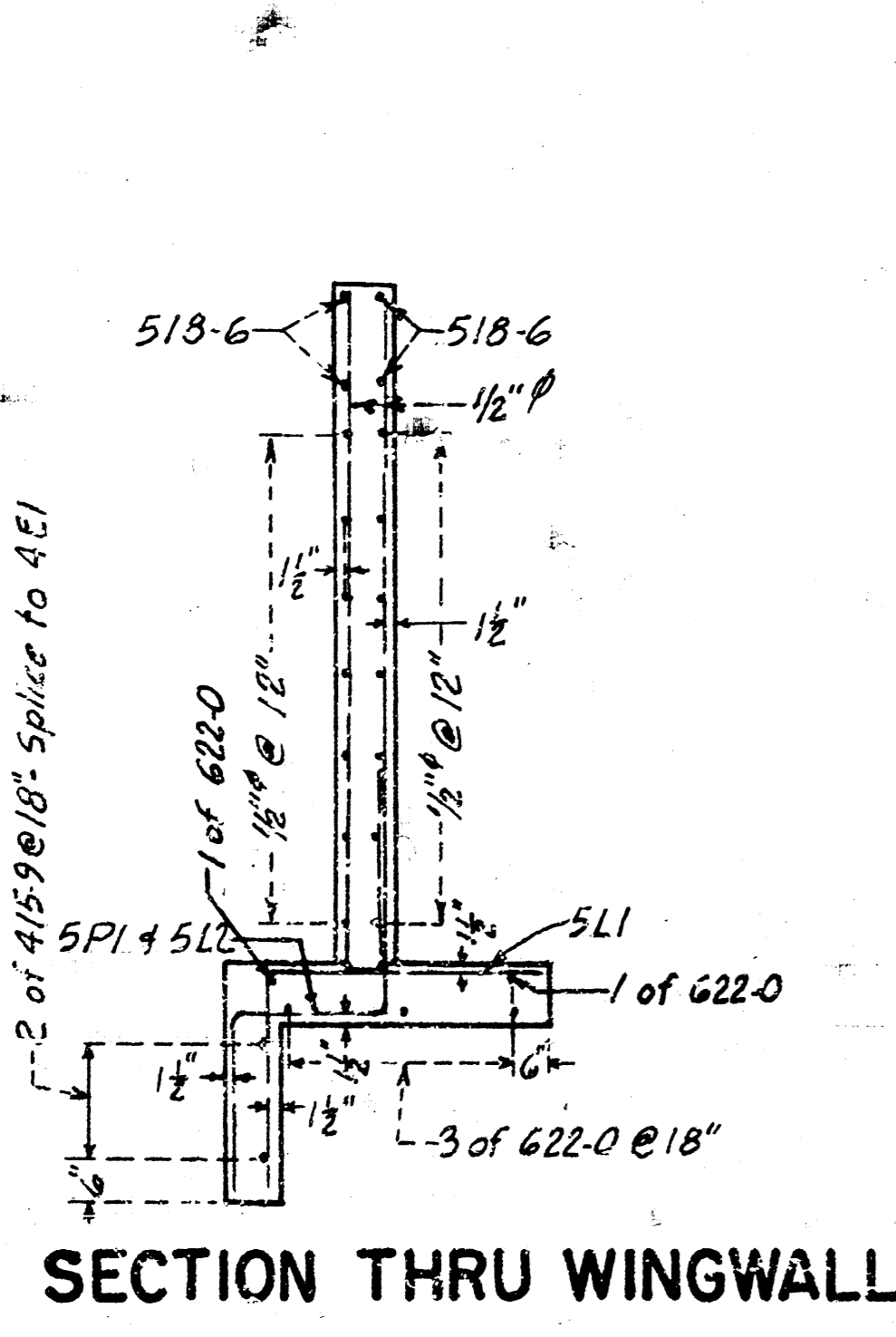
PLAN



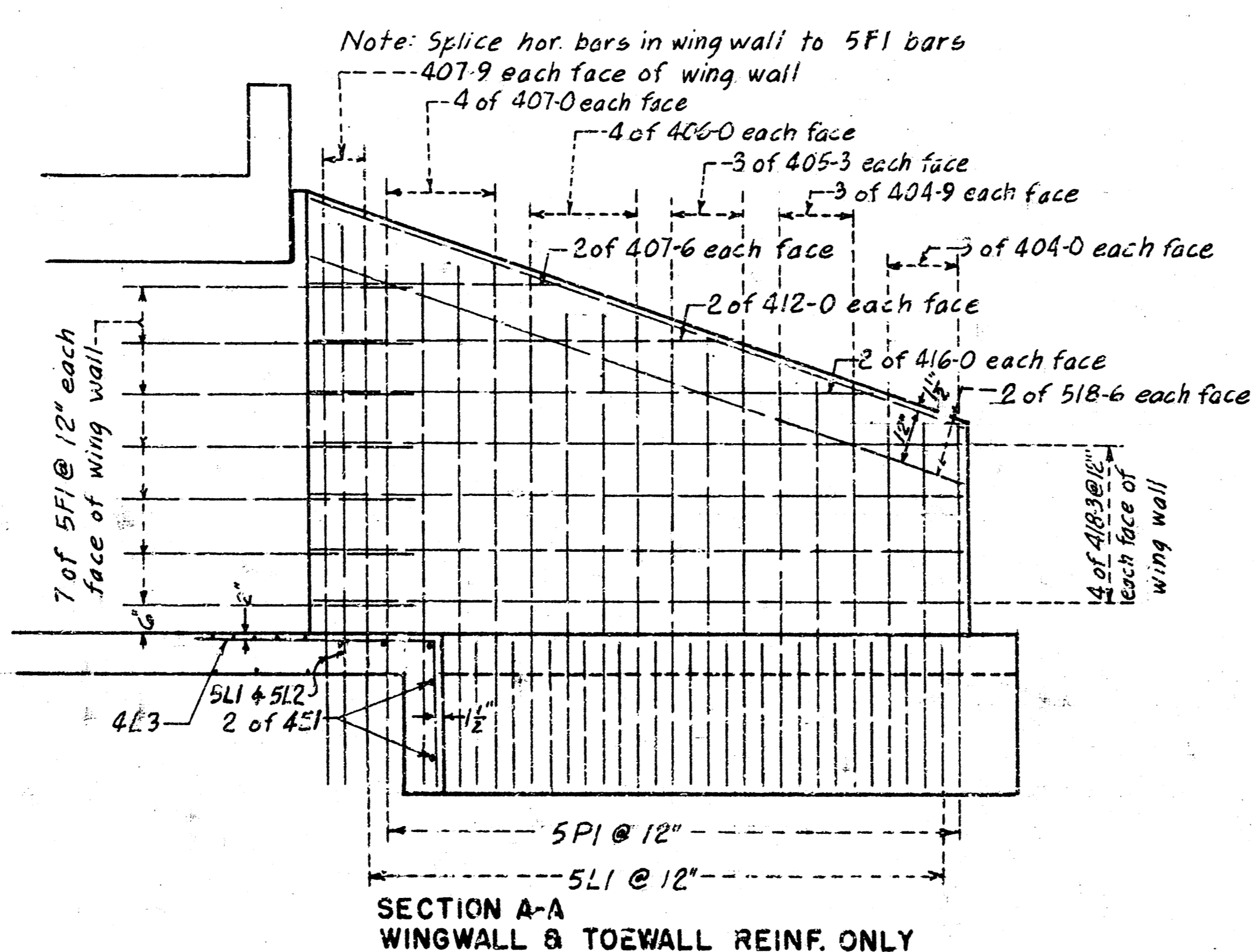
TYPICAL SECTION



SECTION B-B
WALL REINFORCEMENT NOT SHOWN



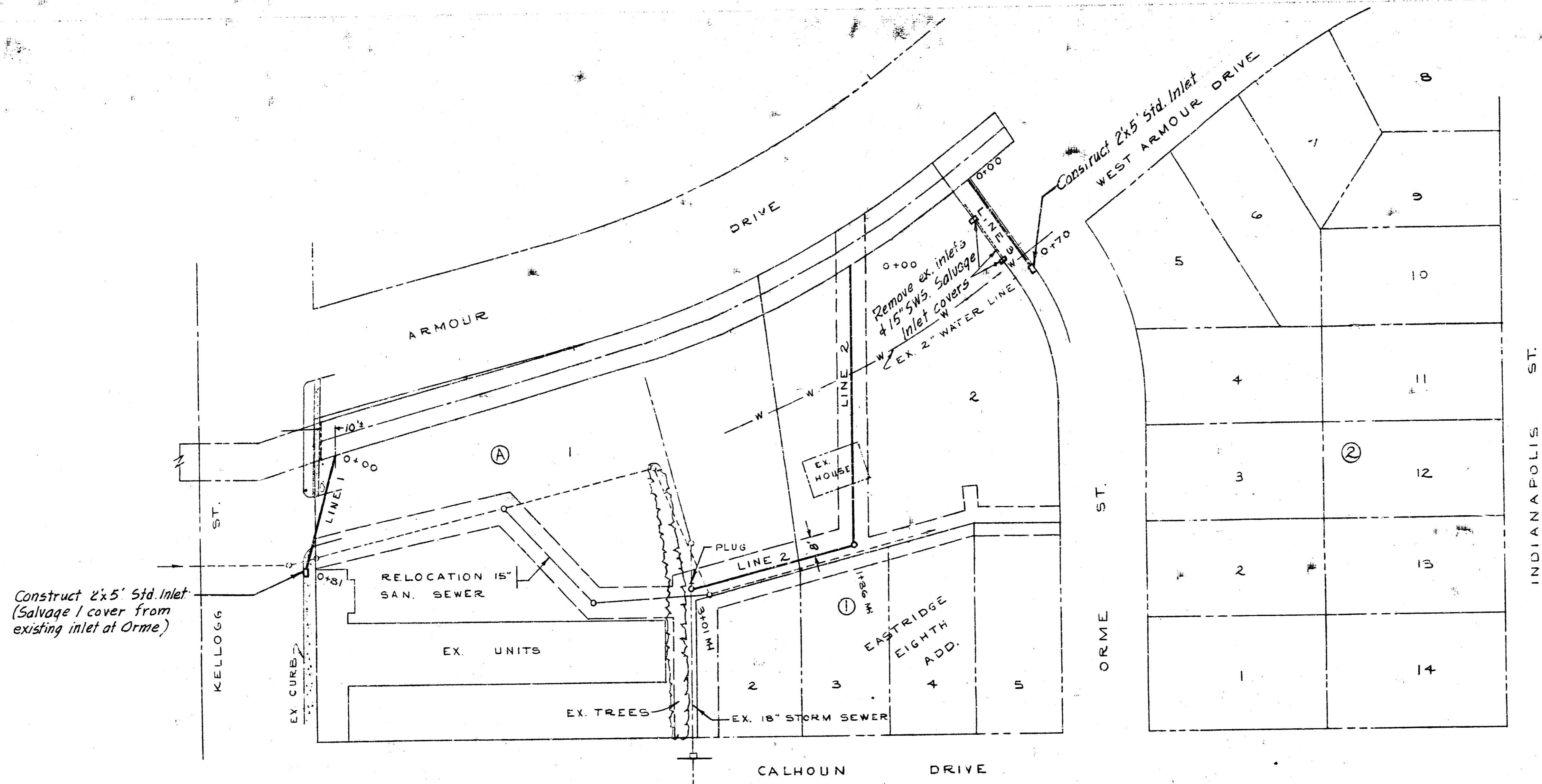
SECTION THRU WINGWALL



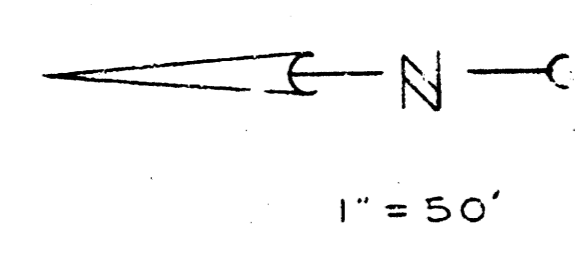
SECTION A-A
WINGWALL & TOEWALL REINF. ONLY

R.C.B.C.-ORME & ARMOUR
REINFORCEMENT

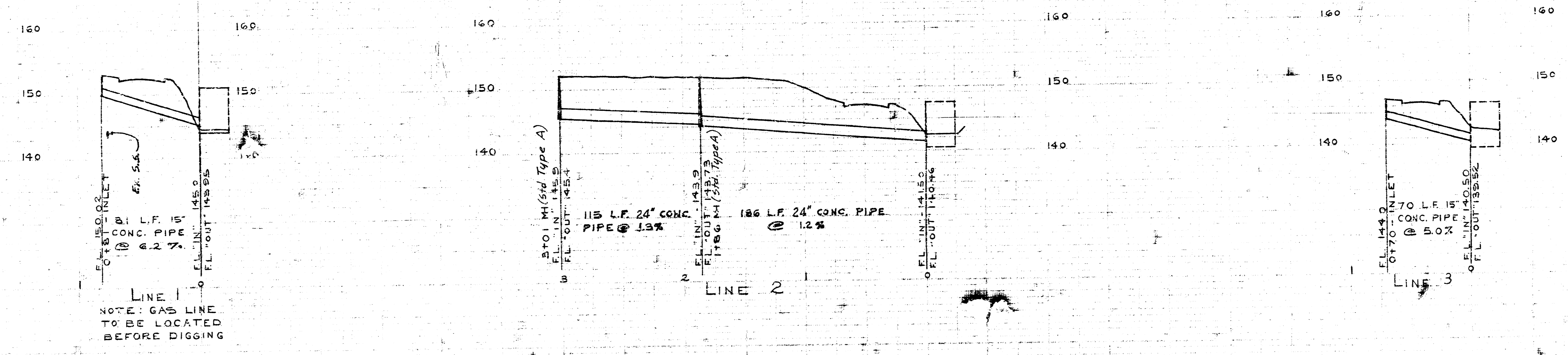
SCALE	REVISION	BY	DATE

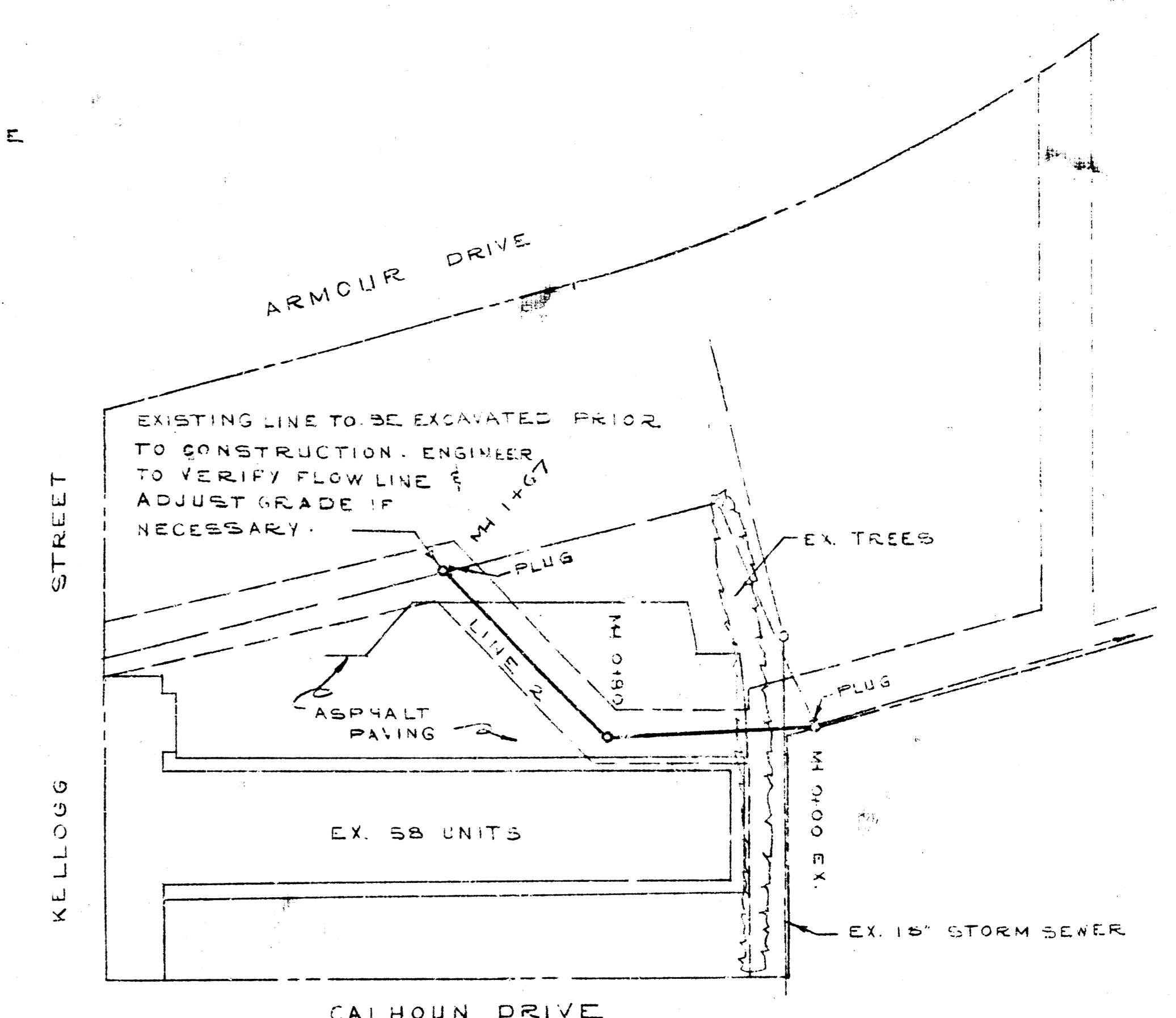
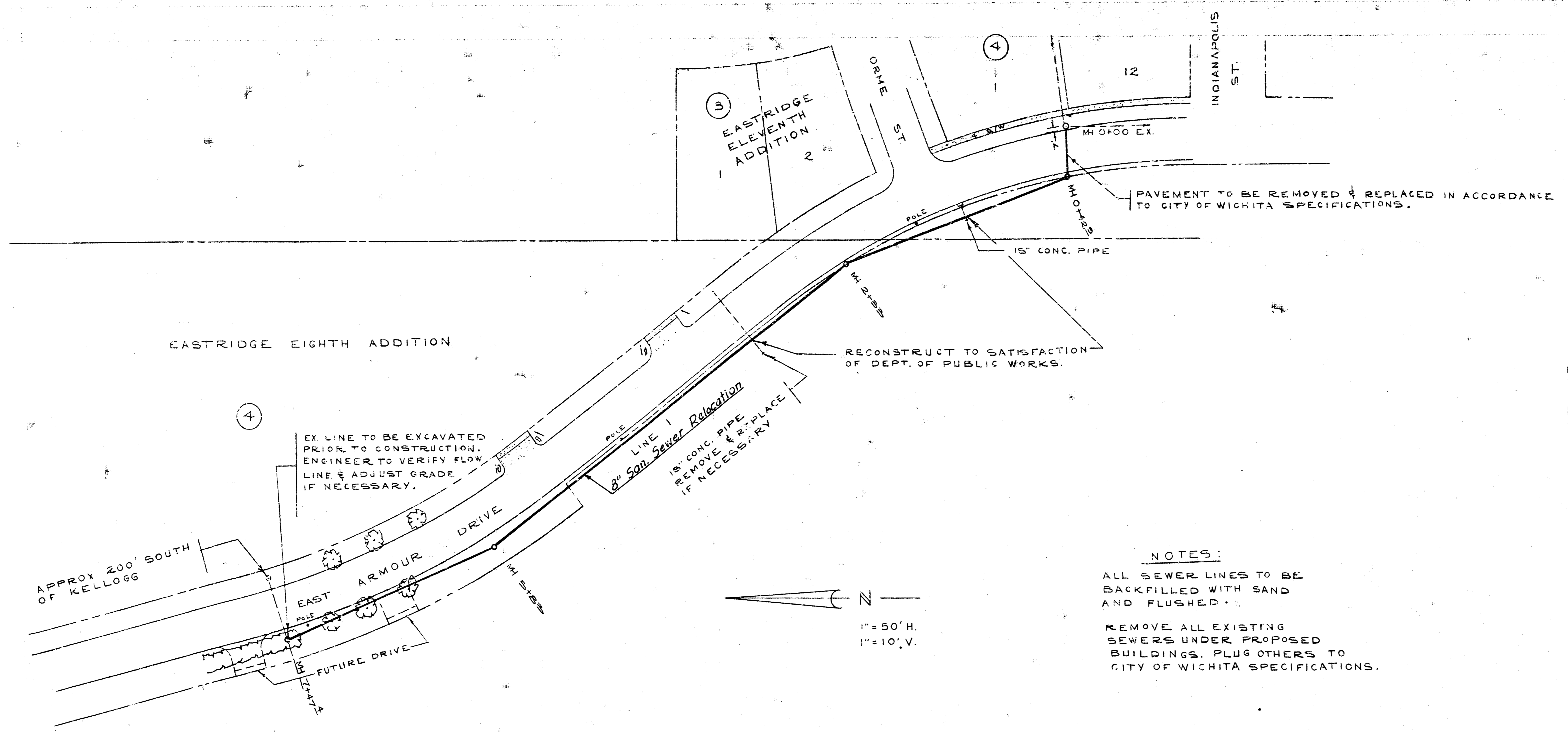


NOTE:
 ALL SEWER LINES TO BE
 BACKFILLED WITH SAND
 AND FLUSHED.
 REMOVE ALL EXISTING SEWERS
 UNDER PROPOSED BUILDINGS,
 PLUG OTHERS TO CITY OF WICHITA
 SPECIFICATIONS.



STORM SEWER RELOCATION
 LIGHTNER ADDITION TO
 WICHITA, KANSAS

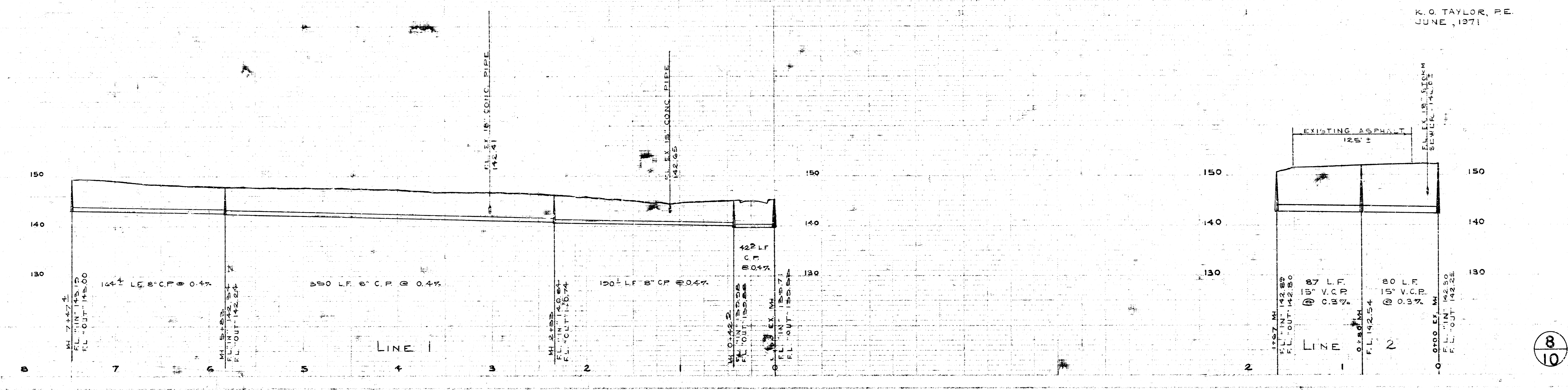


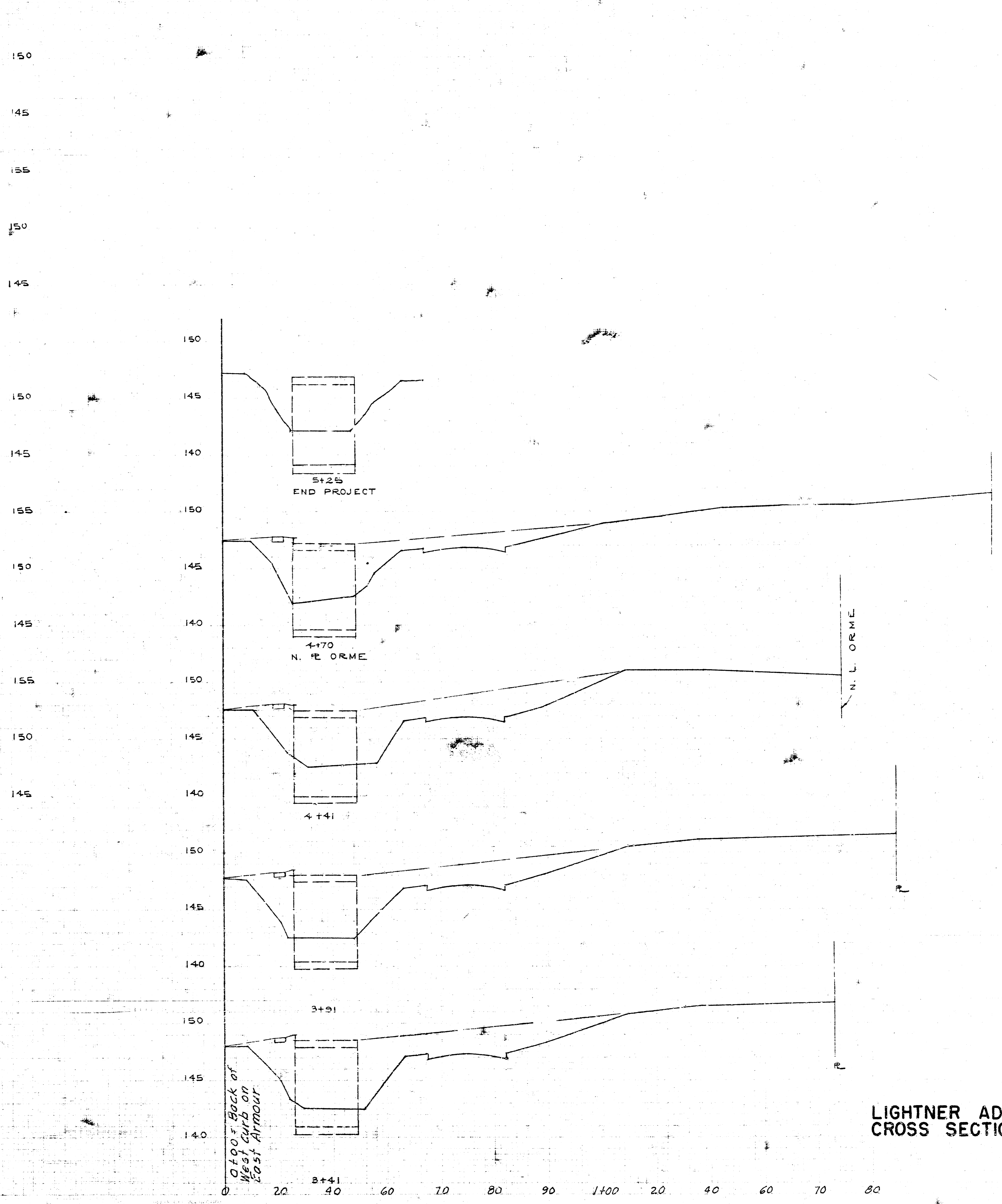
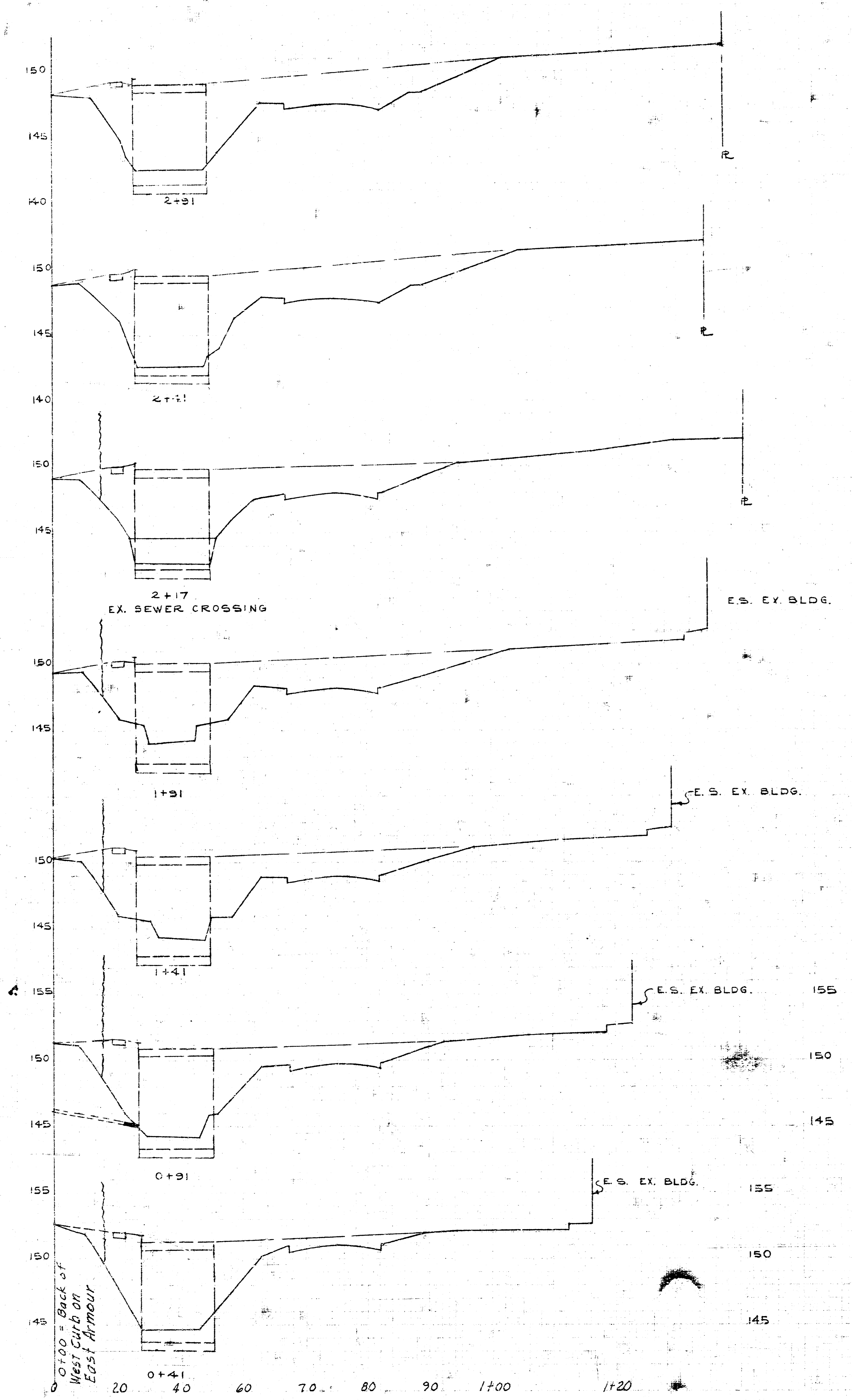


NOTES:
 ALL SEWER LINES TO BE BACKFILLED WITH SAND AND FLUSHED.
 REMOVE ALL EXISTING SEWERS UNDER PROPOSED BUILDINGS. PLUG OTHERS TO CITY OF WICHITA SPECIFICATIONS.

**SANITARY SEWER RELOCATION
 LIGHTNER ADDITION TO
 WICHITA, KANSAS
 AS BUILT**

K. O. TAYLOR, P.E.
 JUNE, 1971





**LIGHTNER ADDITION
CROSS SECTIONS**