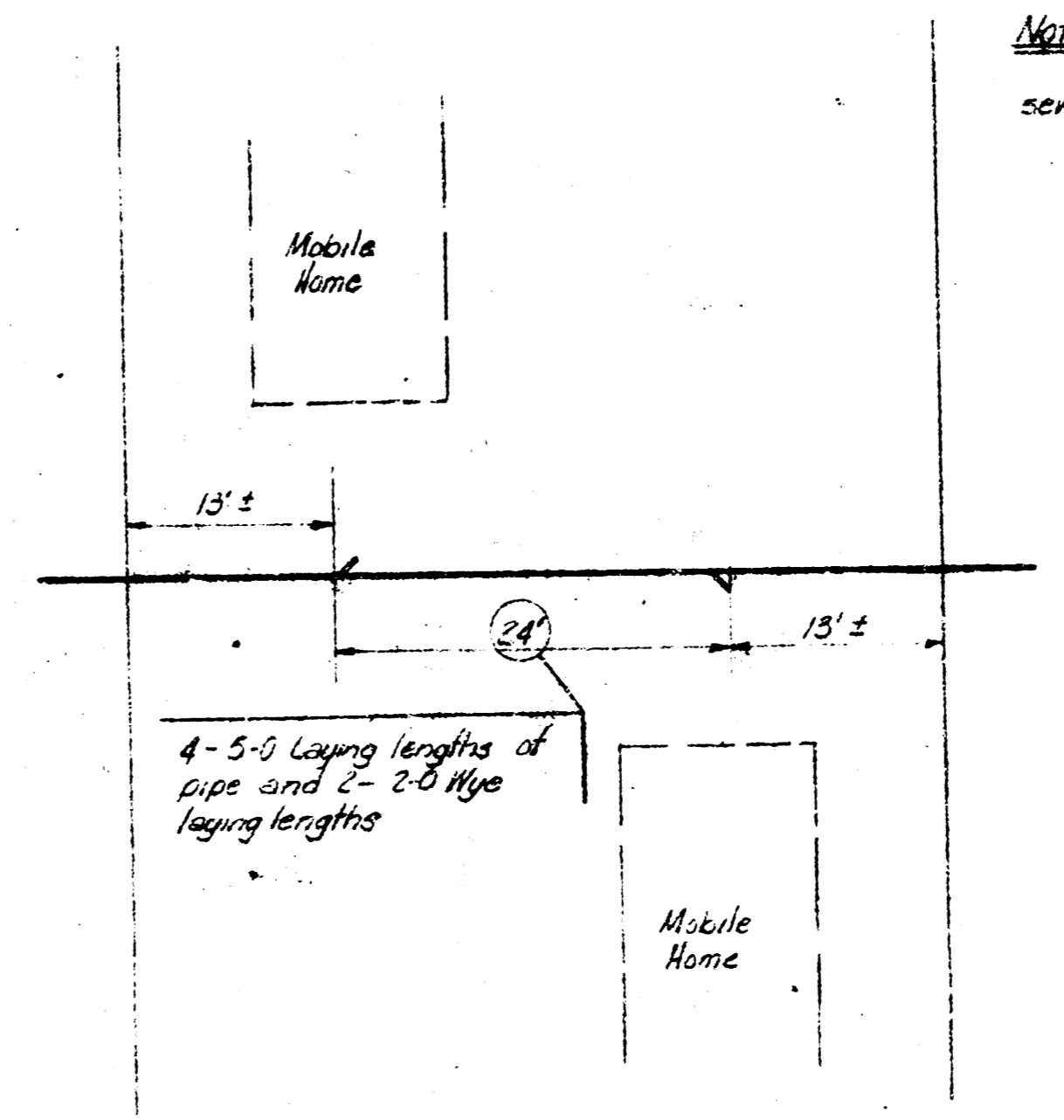
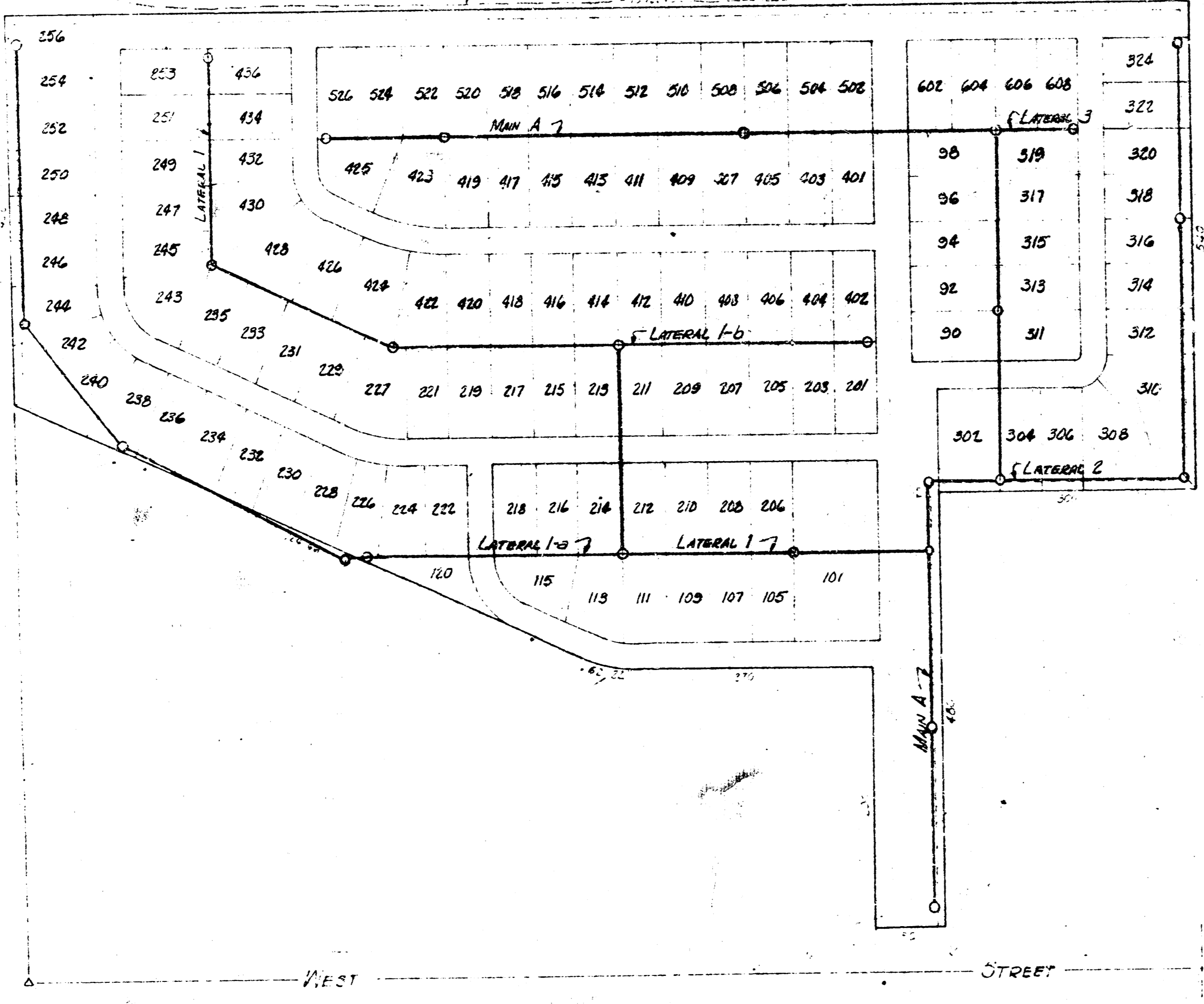


SCALE: 1" = 100'



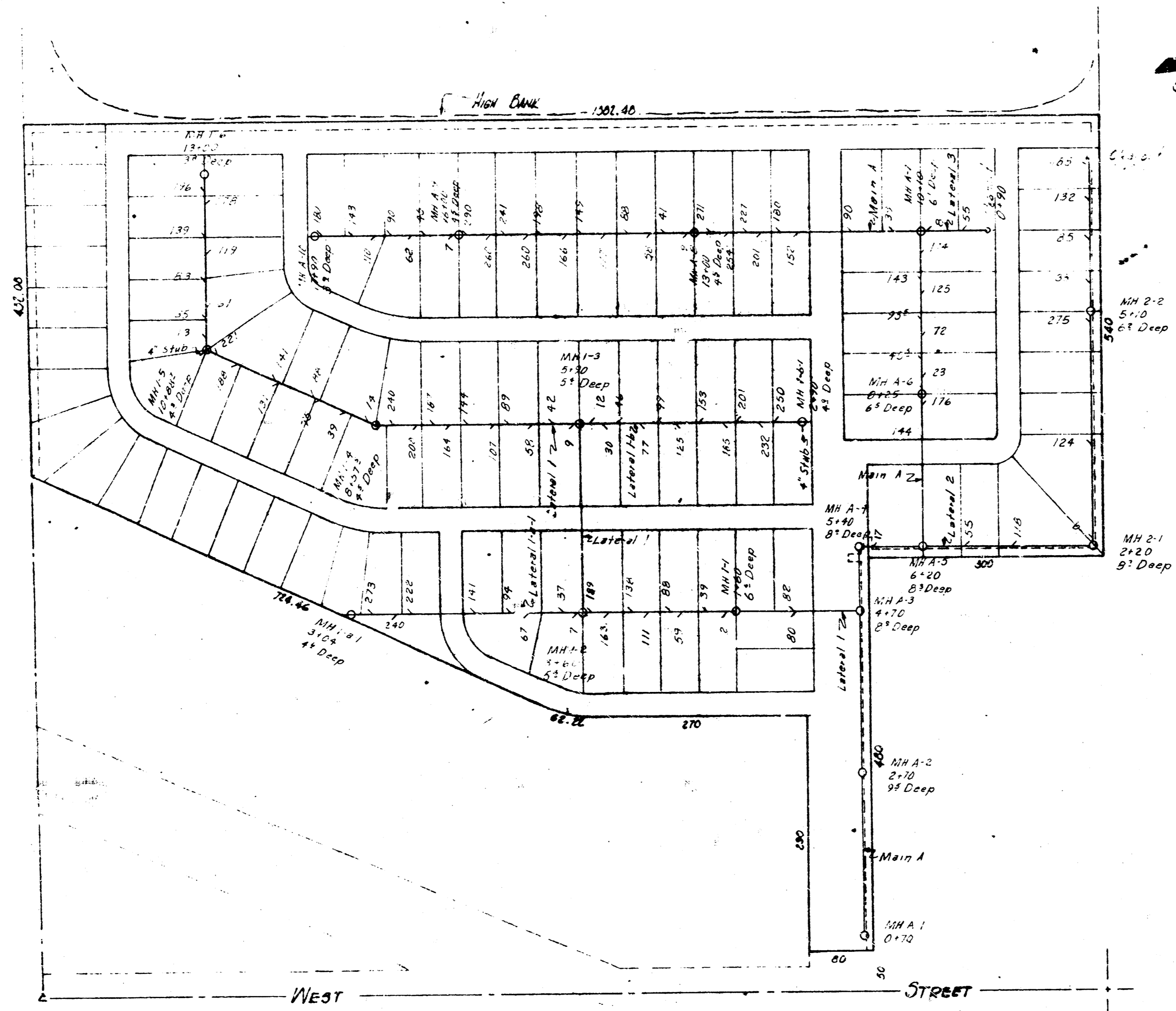
NOTE: Wyes to be directed per sewage flow in SVCP

4'-5" Laying lengths of pipe and 2'-2.8" Wye laying lengths

WYE LOCATIONS

REV'D 9-25-73	GFC	Record Drawings
REV A 4-20-68	RD	Changed MH Locations
SOUTHWEST SAND, INC. WICHITA, KANSAS		
SEWAGE COLLECTION SYSTEM LAKESIDE MOBILE HOME PARK 2625 SOUTH WEST STREET WICHITA, KANSAS		
CAMPBELL B CASTLE ENGINEERS WICHITA, KANSAS	DSG C DR RD CH APP	DWG FILE NO 6546-D-60,005
DATE APRIL 1968		SHEET NO 1 OF 3 RD

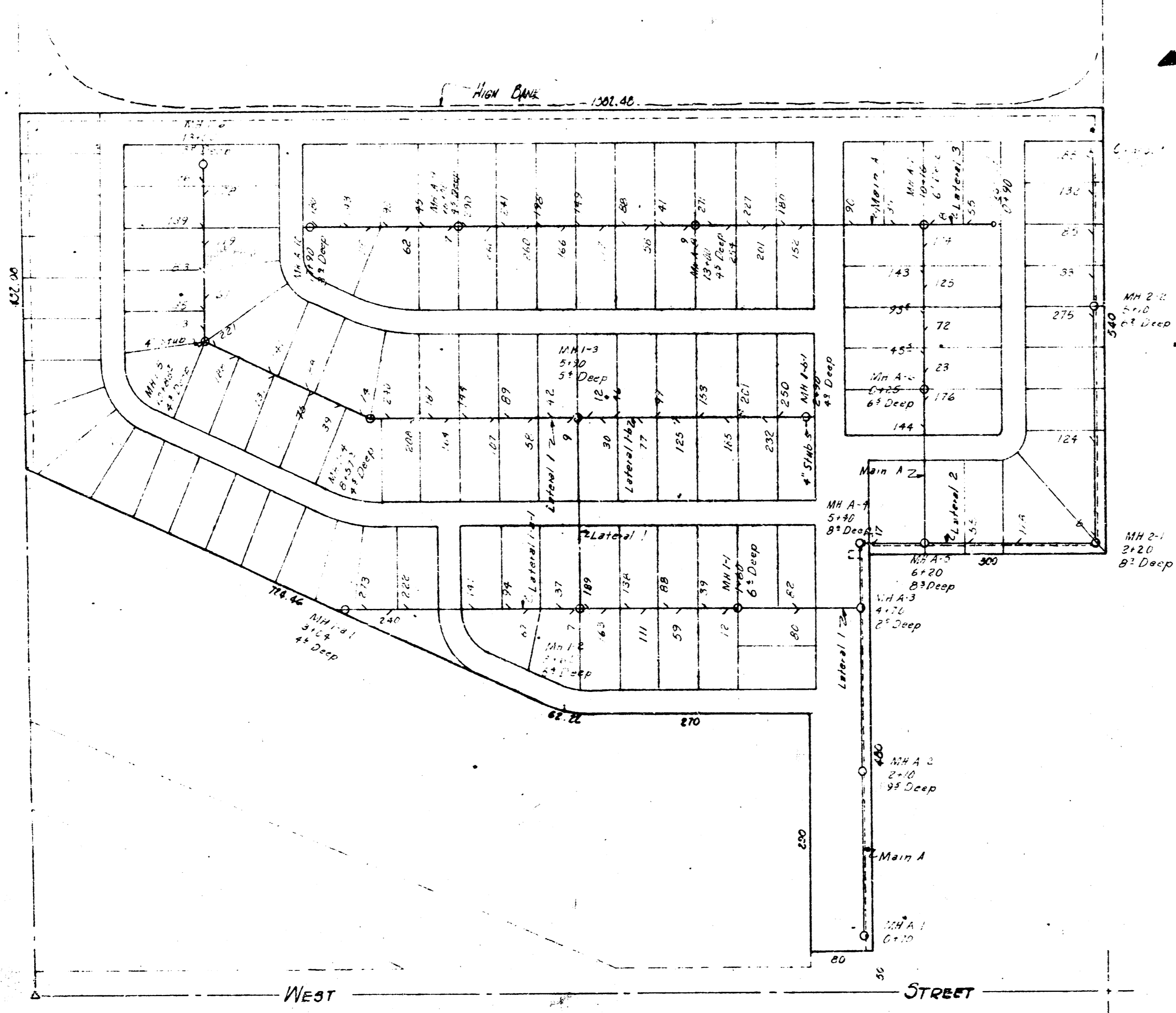




SCALE: 1" = 100'

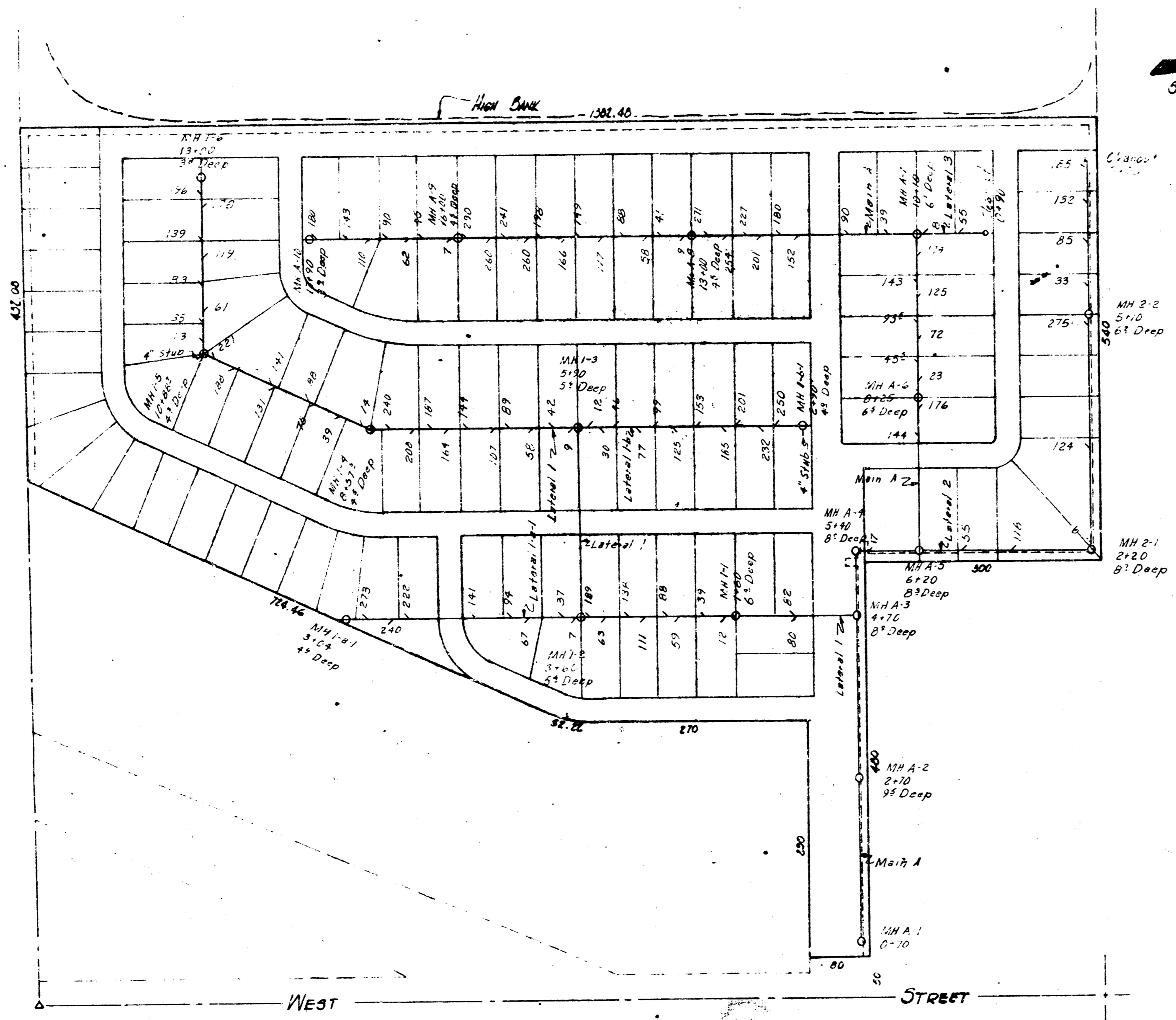
*Ben Dwyer*  
*AS EIT 11/1/1960*

SOUTHWEST SAND, INC. WICHITA, KANSAS			
WYE MAP LAKESIDE MOBILE HOME PARK 2625 SOUTH WEST STREET WICHITA, KANSAS			
CAMPBELL & CASTLE ENGINEERS WICHITA, KANSAS	DSG DRCLM CH APP	DWG FILE NO 6546-D60,009	REV.
DATE MAY 1960	SHEET NO 1 OF 1		



SCALE: 1" = 100'

SOUTHWEST SAND, INC.			
WICHITA, KANSAS			
WYE MAP			
LAKESIDE MOBILE HOME PARK			
2625 SOUTH WEST STREET		WICHITA, KANSAS	
CAMPBELL & CASTLE	DRG	DWG FILE NO	
ENGINEERS	DR/CLM	6546-D60,009	
WICHITA, KANSAS	CH		
DATE	MAY 1968	APP	SHEET NO 1 OF 1

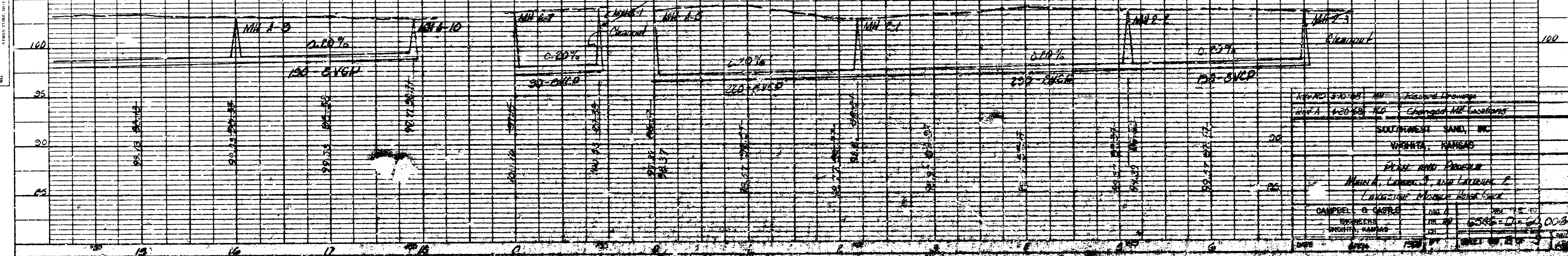
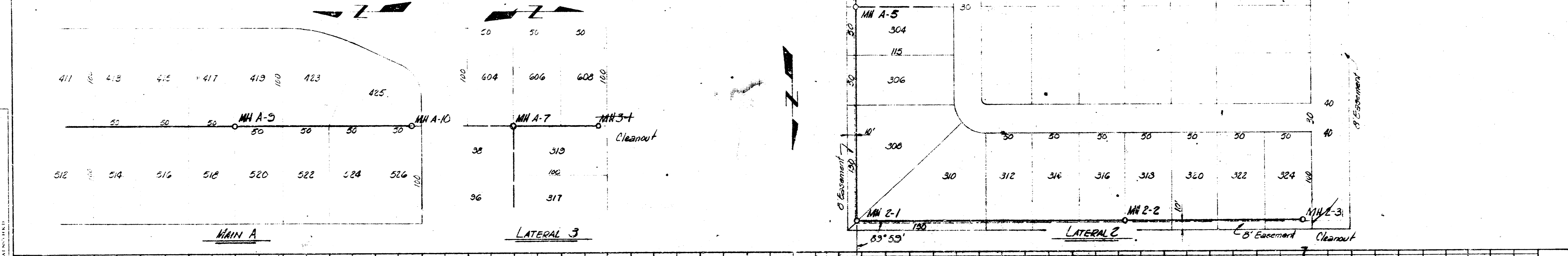
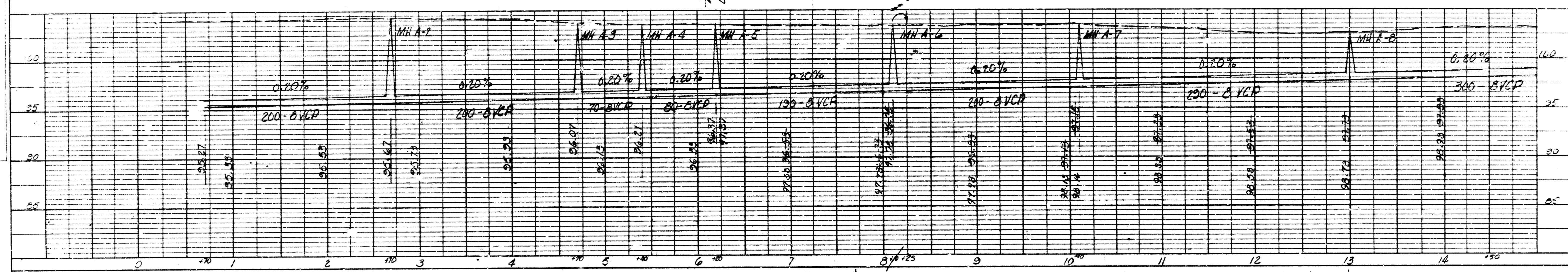
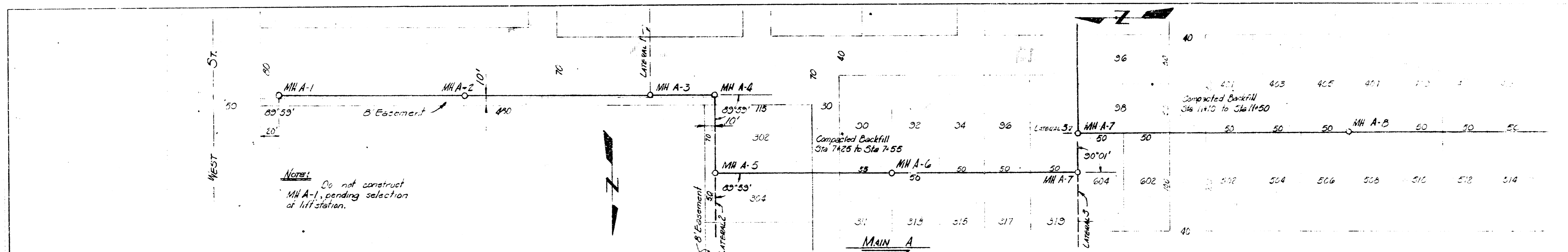


SCALE: 1" = 100'

SOUTHWEST SAND, INC. WICHITA, KANSAS			
WYE MAP LAKESIDE MOBILE HOME PARK 2625 SOUTH WEST STREET WICHITA, KANSAS			
CAMPBELL & CASTLE ENGINEERS WICHITA, KANSAS	DSG DR: ZLM CH	DWG FILE NO 6546-D60,009	REV
DATE MAY 1966	APP	SHEET NO 1 OF 1	

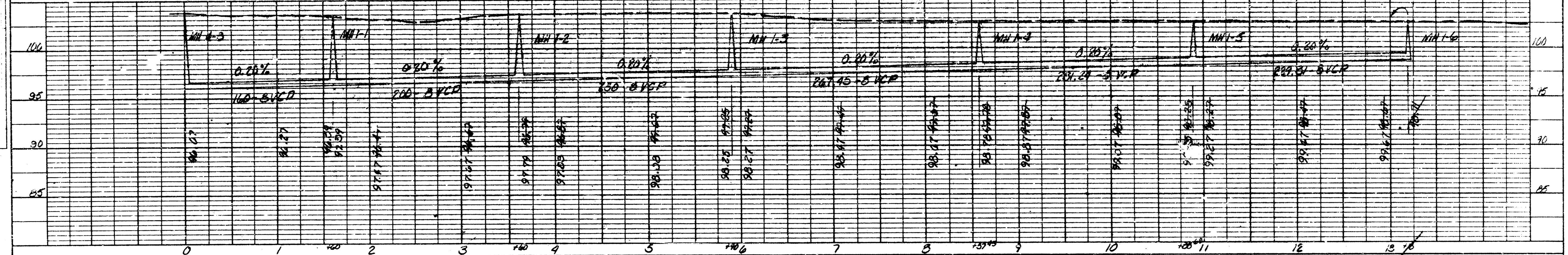
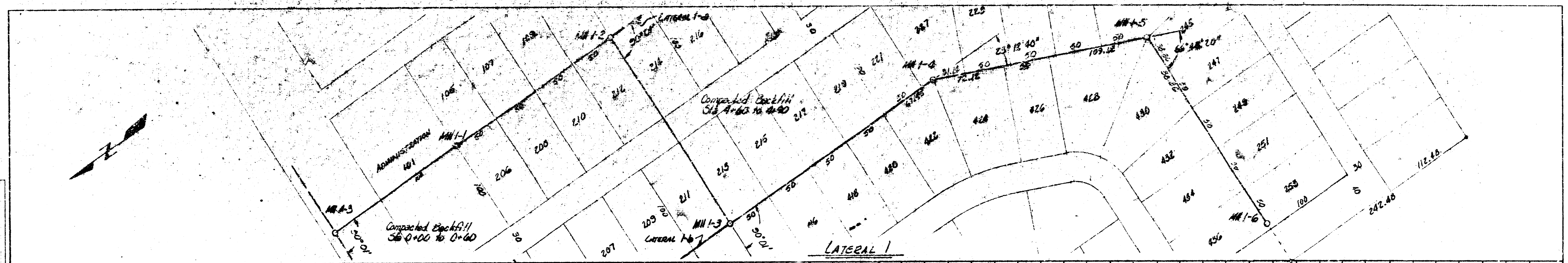
PLAN  
 SHEET NO. 10  
 DATE: 10/15/10  
 DRAWN BY: J. H. [unclear]  
 CHECKED BY: [unclear]

PROFILE  
 SHEET NO. 11  
 DATE: 10/15/10  
 DRAWN BY: J. H. [unclear]  
 CHECKED BY: [unclear]

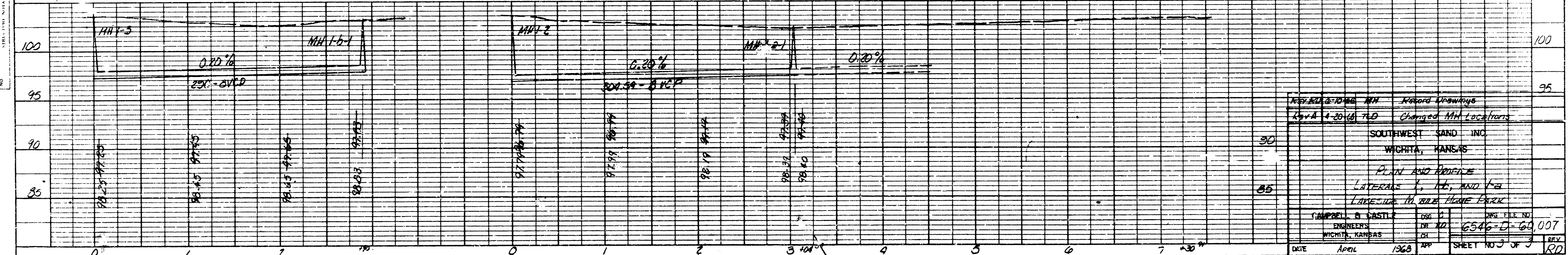
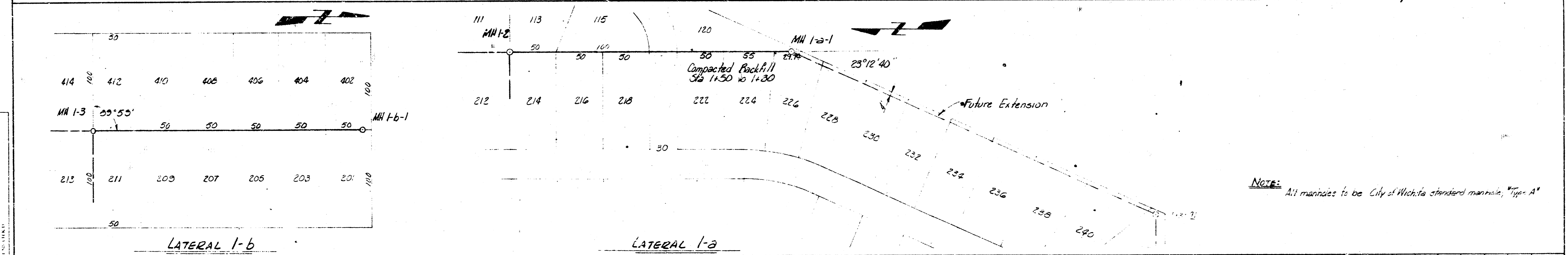


DATE: 10/15/10	BY: J. H. [unclear]	CHECKED BY: [unclear]
PROJECT: [unclear] LOCATION: [unclear] DRAWING NO.: [unclear]		
SCALE: PLAN - PROFILE 1" = 40' - 1" = 10' SHEET NO. 10 OF 10		

PLAN  
 1" = 40'  
 NORTH ARROW  
 DATE: APRIL 1968  
 SHEET NO. 3 OF 3



PROFILE  
 1" = 10'  
 NORTH ARROW  
 DATE: APRIL 1968  
 SHEET NO. 3 OF 3

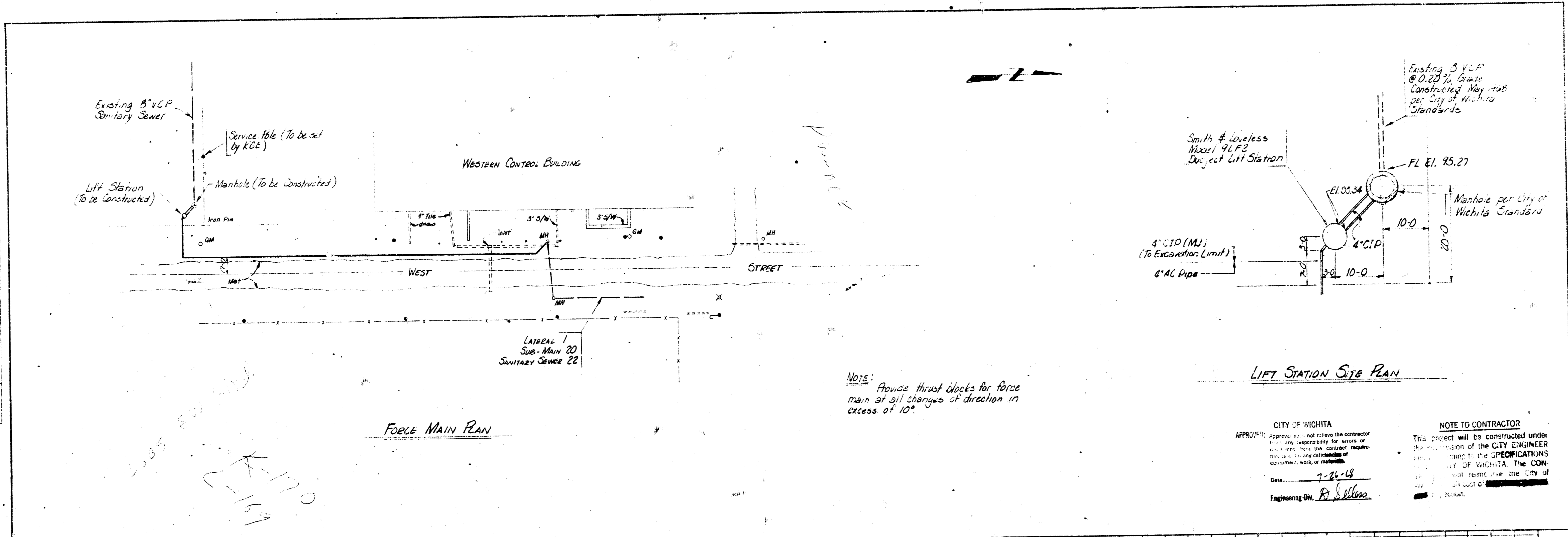


NOTE: All manholes to be City of Wichita standard manhole, Type A

DESIGNED BY	W. H. HARRIS
CHECKED BY	W. H. HARRIS
DATE	APRIL 1968
PROJECT	SEWER LATERALS 1-a, 1-b, AND 1-c
CLIENT	SOUTHWEST SAND INC.
LOCATION	WICHITA, KANSAS
ENGINEER	TAMMELL & CASTLE
DATE	APRIL 1968
PROJECT NO.	6546-D-68-007
SHEET NO.	3 OF 3

PLAN  
 SHEET NO. 1  
 DATE 7-26-68  
 ENGINEER B. J. SELLERS

PROFILE  
 SHEET NO. 1  
 DATE 7-26-68  
 ENGINEER B. J. SELLERS

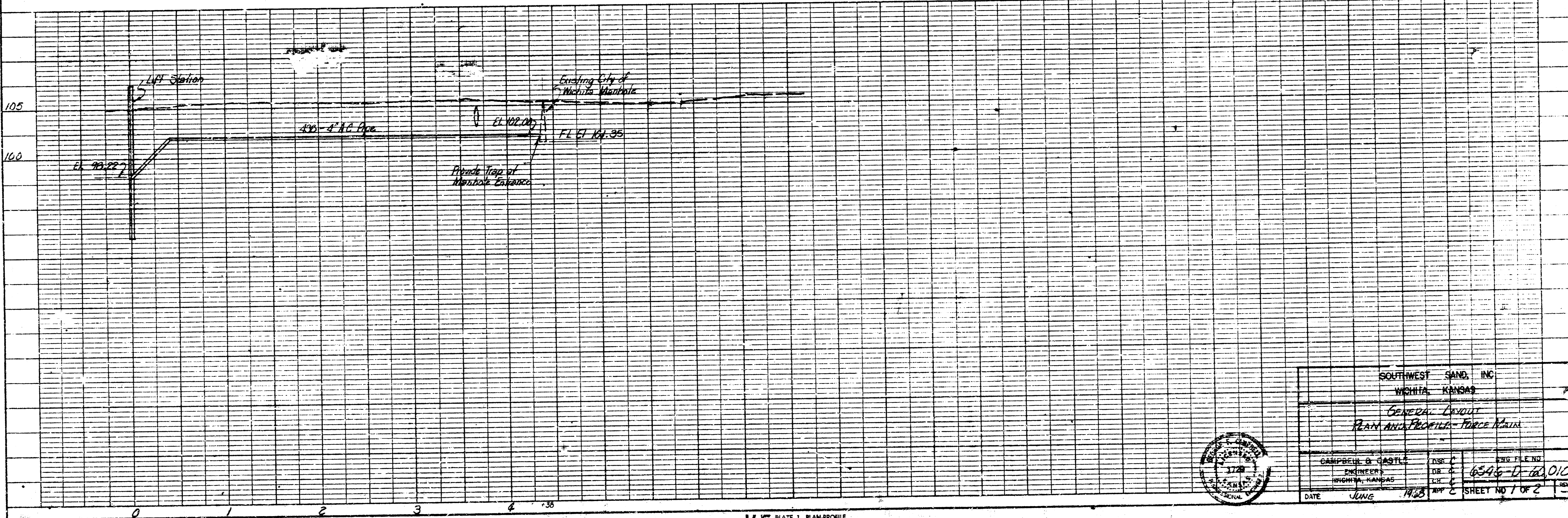


NOTE: Provide thrust blocks for force main at all changes of direction in excess of 10°.

LIFT STATION SITE PLAN

CITY OF WICHITA  
 APPROVED: [Signature]  
 Date: 7-26-68  
 Engineering By: B. J. Sellers

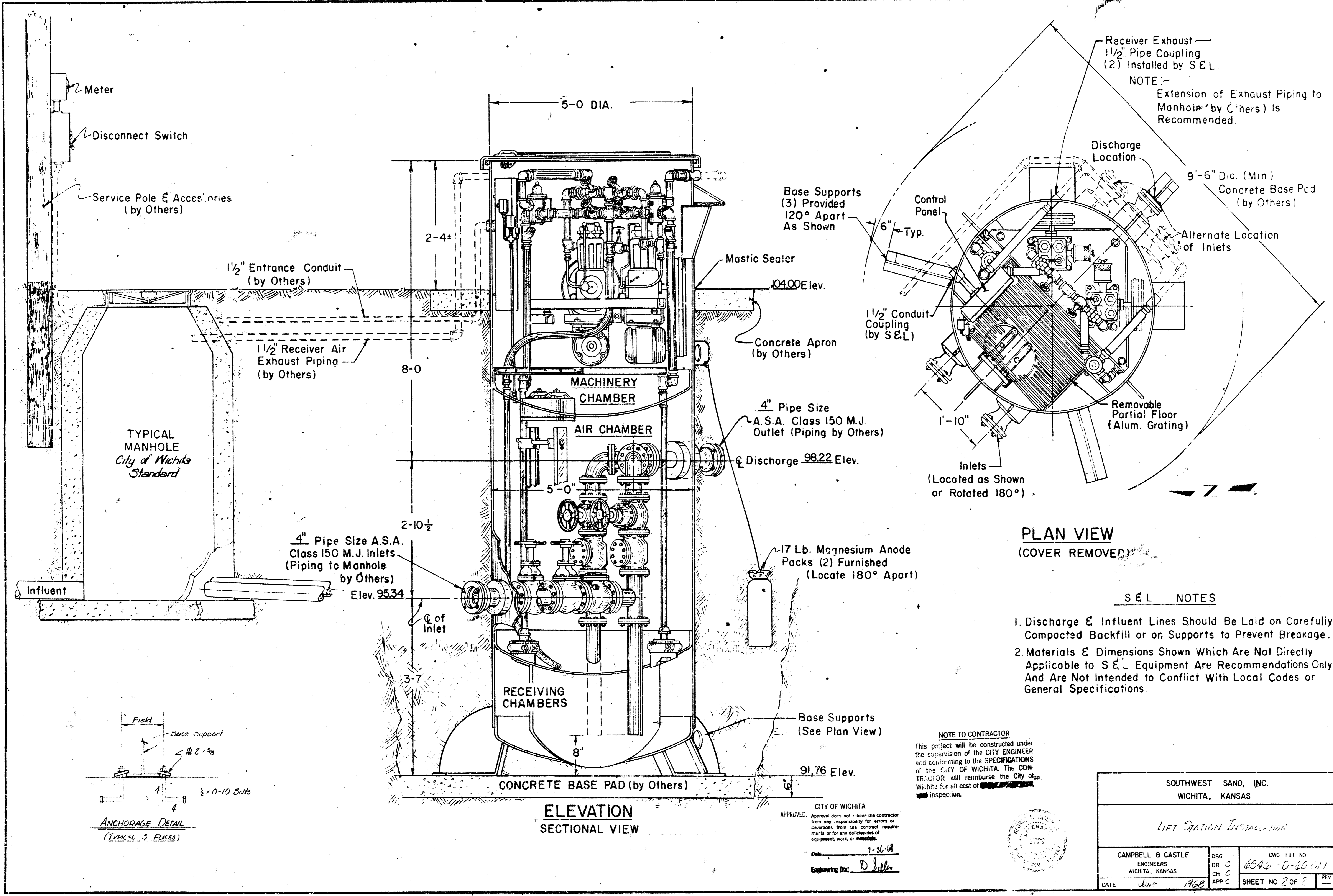
NOTE TO CONTRACTOR  
 This project will be constructed under the supervision of the CITY ENGINEER. The CONTRACTOR shall conform to the SPECIFICATIONS and all other requirements of the CITY OF WICHITA. The CONTRACTOR shall permit use the City of Wichita's standards.



K&E PLATE 1, PLAN/PROFILE  
 K&E ENGINEERS & ARCHITECTS



SOUTHWEST SAND, INC.	
WICHITA, KANSAS	
GENERAL CONTRACTOR	
PLAN AND PROFILE - FORCE MAIN	
CAMPBELL B. CASTLE	ENGINEER
WICHITA, KANSAS	
DATE: JUNE 1968	SHEET NO. 1 OF 2



Receiver Exhaust —  
1 1/2" Pipe Coupling  
(2) Installed by S & L.  
NOTE: —  
Extension of Exhaust Piping to  
Manhole (by Others) is  
Recommended.

**PLAN VIEW**  
(COVER REMOVED)

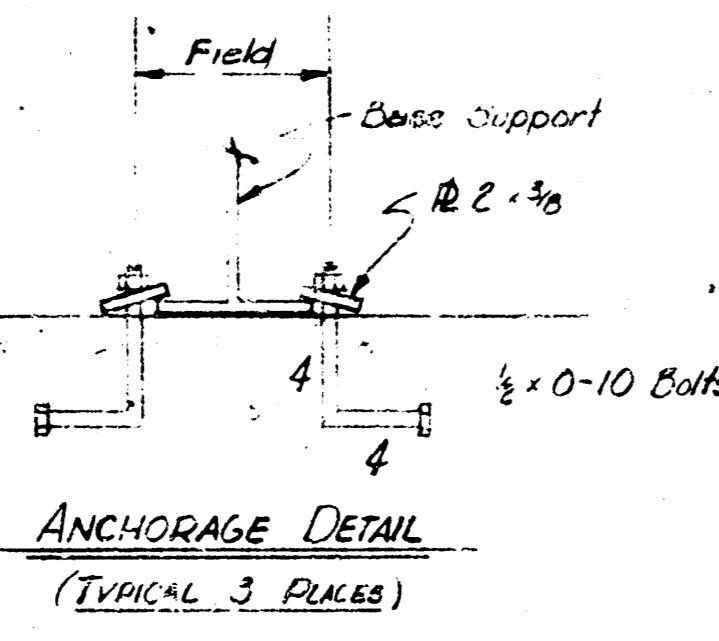
**S & L NOTES**

1. Discharge & Influent Lines Should Be Laid on Carefully Compacted Backfill or on Supports to Prevent Breakage.
2. Materials & Dimensions Shown Which Are Not Directly Applicable to S & L Equipment Are Recommendations Only And Are Not Intended to Conflict With Local Codes or General Specifications.

**NOTE TO CONTRACTOR**  
This project will be constructed under the supervision of the CITY ENGINEER and conforming to the SPECIFICATIONS of the CITY OF WICHITA. The CONTRACTOR will reimburse the City of Wichita for all cost of ~~\_\_\_\_\_~~ inspection.

CITY OF WICHITA  
APPROVED: \_\_\_\_\_  
Approval does not release the contractor from any responsibility for errors or deviations from the contract requirements or for any deficiencies of equipment, work, or materials.  
Date: 7/26/68  
Engineering Div. D. Miller

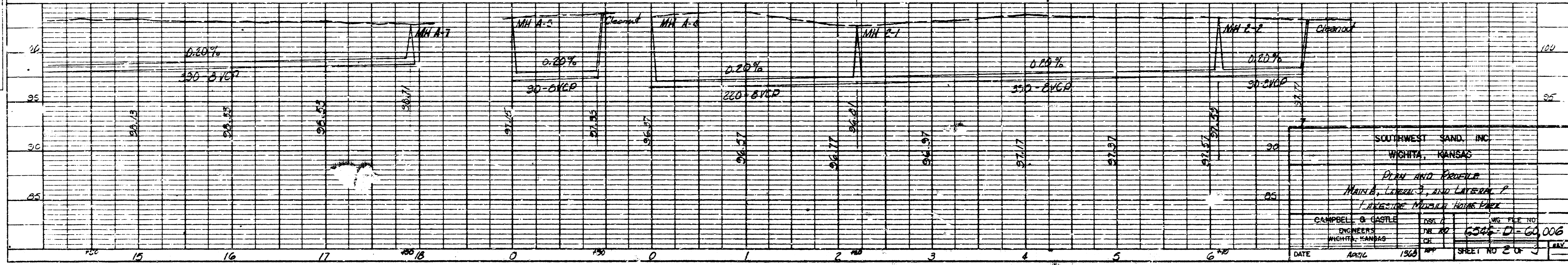
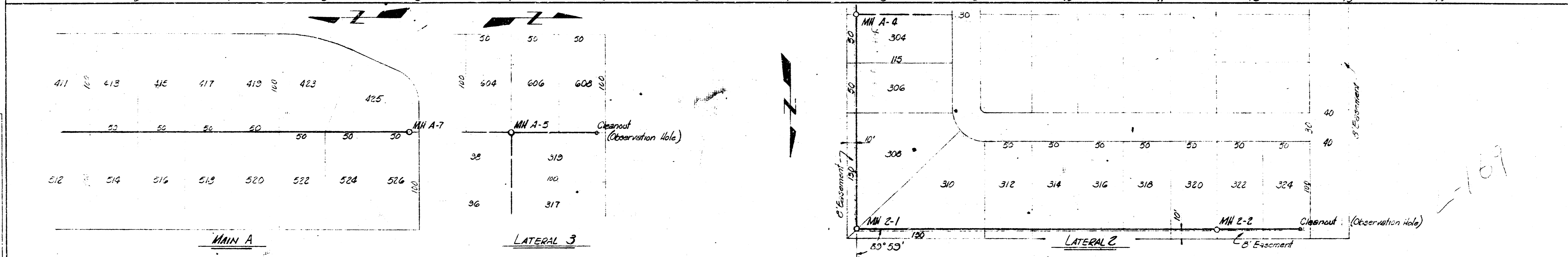
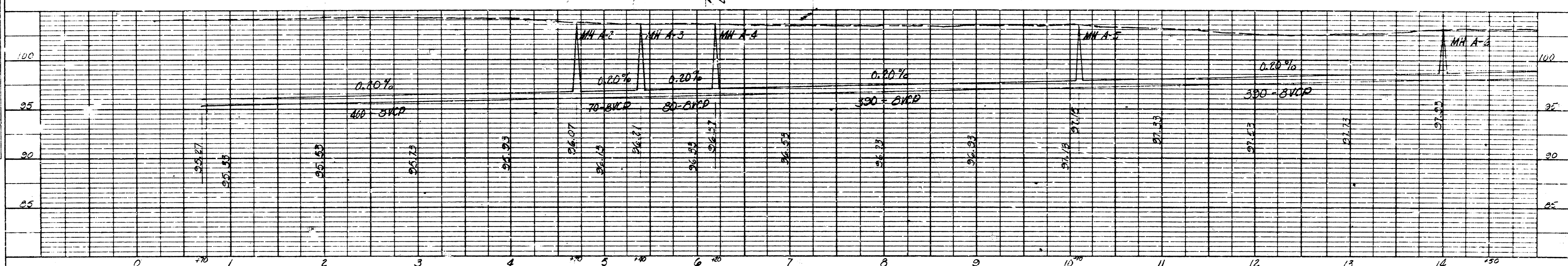
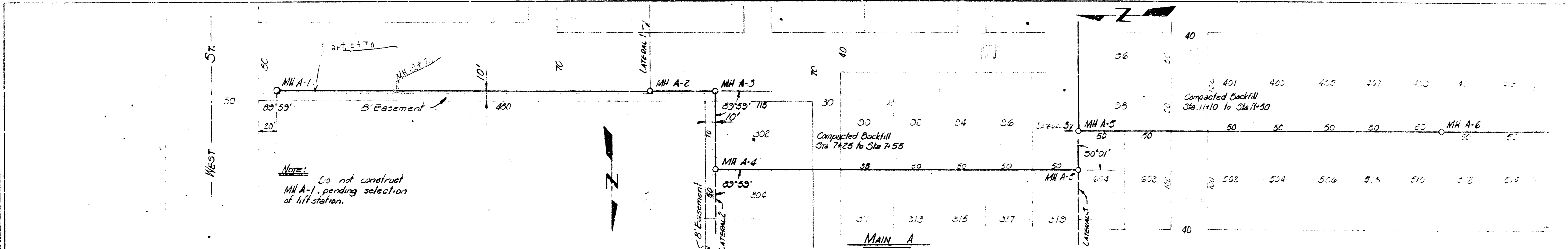
SOUTHWEST SAND, INC. WICHITA, KANSAS	
LIFT STATION INSTALLATION	
CAMPBELL R. CASTLE ENGINEERS WICHITA, KANSAS	DSG — DR C CHK C APP C DATE: June 1968
DWG FILE NO. 6546-D-60-111	SHEET NO 2 OF 2



**ELEVATION**  
SECTIONAL VIEW

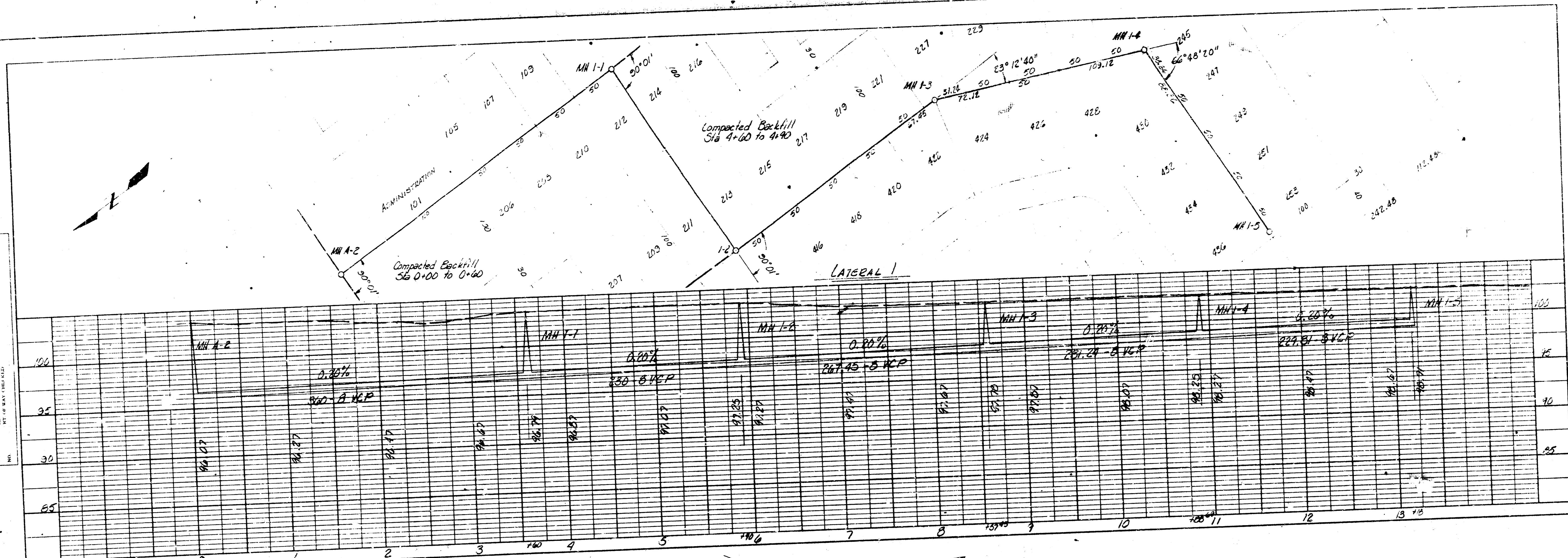


**PLAN**  
 PROPERTY: [unclear]  
 COUNTY: [unclear]  
 DISTRICT: [unclear]  
 SHEET NO. 2 OF 3

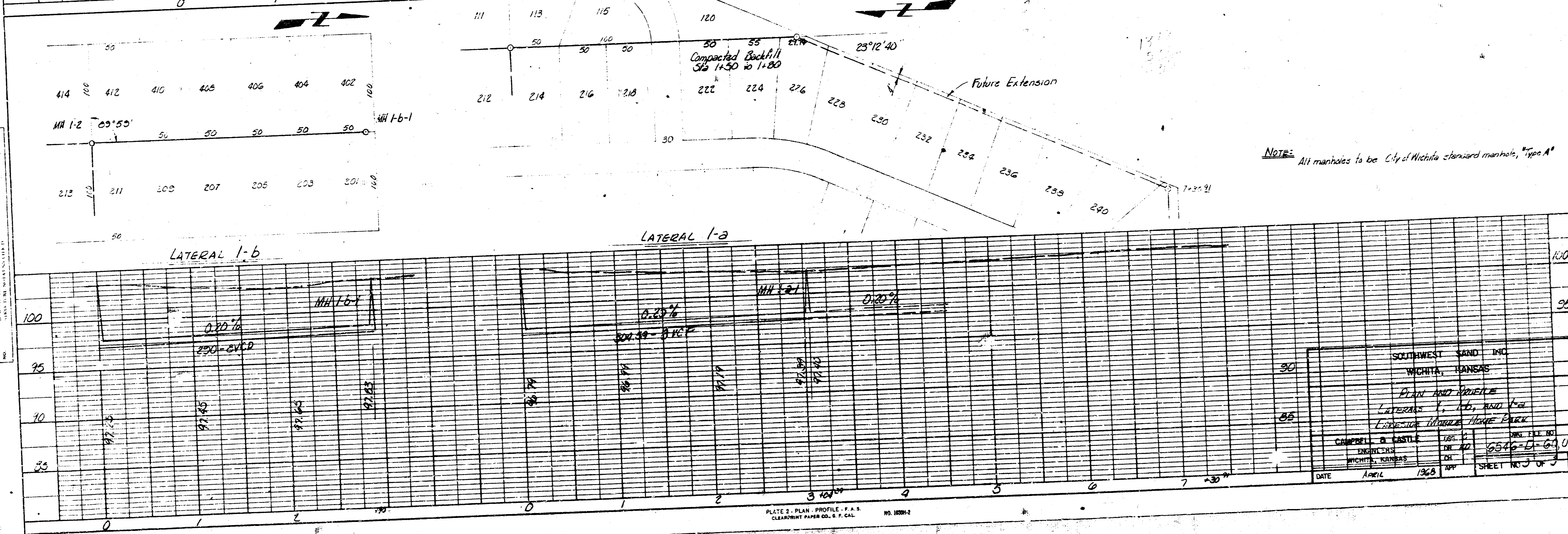


SOUTHWEST SAND, INC.  
 WISHKA, KANSAS  
 OPEN AND PIONEER  
 MAIN A, LATERAL 3, AND LATERAL 2  
 1" DIAMETER MANHOLE HOLES PER  
 CAMPBELL & CASTLE  
 ENGINEERS  
 WISHKA, KANSAS  
 DATE APRIL 1968  
 SHEET NO. 2 OF 3

PLAN  
 UNITS: HORIZONTAL DISTANCES IN FEET, VERTICAL DISTANCES IN FEET  
 DATE: APRIL 1968



PROFILE  
 UNITS: HORIZONTAL DISTANCES IN FEET, VERTICAL DISTANCES IN FEET  
 DATE: APRIL 1968



NOTE: All manholes to be City of Wichita standard manholes, "Type A"

SOUTHWEST SAND INC  
 WICHITA, KANSAS  
 PLAN AND PROFILE  
 LATERALS 1-a, 1-b, AND 1-c  
 LINDSEY PARK MOORE PARK

CAMPBELL & CASTLE  
 ENGINEERS  
 WICHITA, KANSAS

DATE: APRIL 1968

NO. 102842

NO. FILE NO.  
 4516-61-69,007

SHEET NO. 3 OF 3