

- Notes:**
1. Construction shall be in accordance with the City of Wichita specifications for sanitary sewer.
 2. Slope of pipe shall be in accordance with the City of Public Works Department.
 3. All pipe shall be installed in accordance with the City of Wichita specifications for sanitary sewer.
 4. Joint, specify and indicate in accordance with the standard specifications for sanitary sewer.
 5. Earth Backfill shall be in accordance with ASTM 608 and 609.
 6. Compact to 95% of maximum dry density.
 7. The Contractor shall be required to verify the beginning of construction and shall ensure that all existing lines are 1.5 feet.

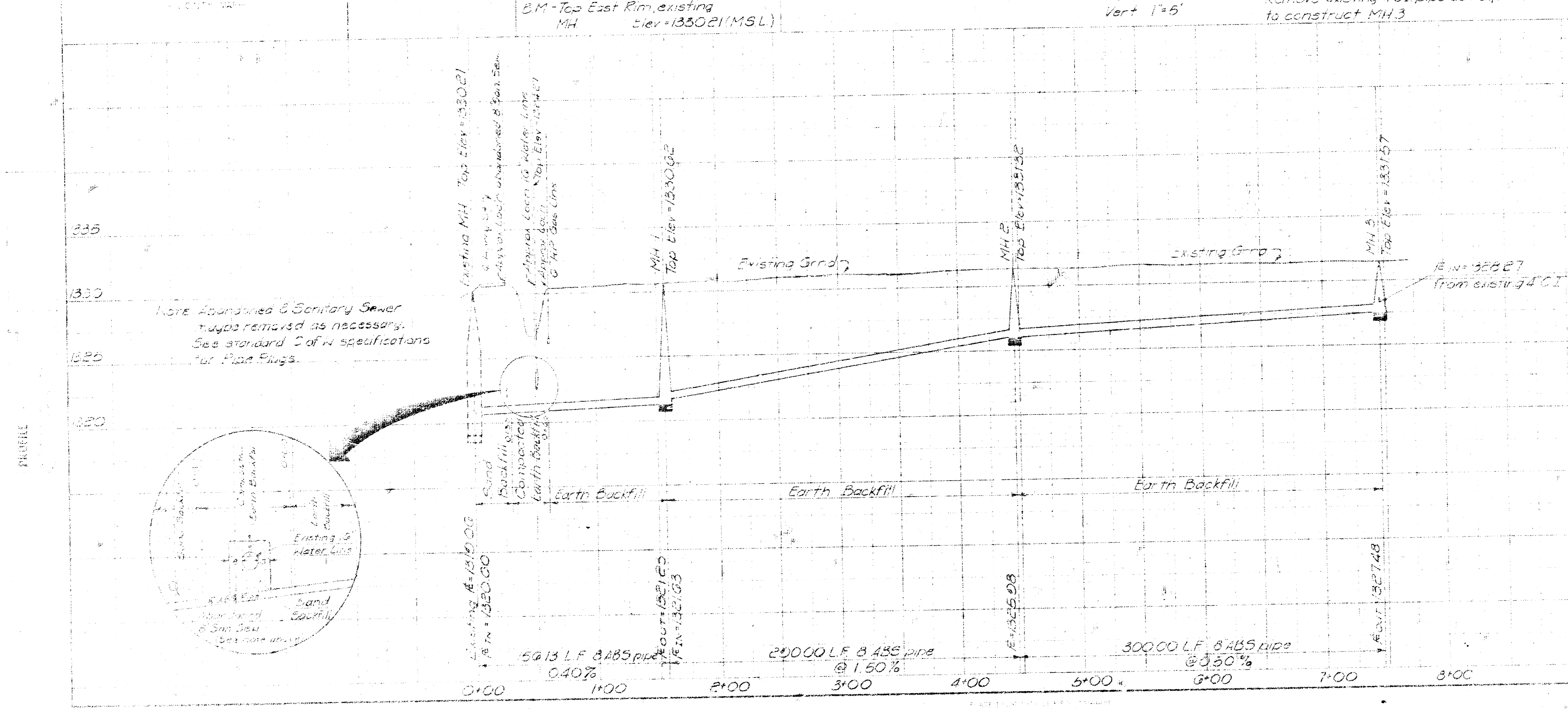
Gas Service Company
 1021 East 24th St. North
 672-1501 Engineering Dept

City of Wichita Water Dept
 450 N Main St
 672-4587 Barry Gager

8. Prior to beginning construction the Contractor shall verify the flowline elevation of the existing 4 CI pipe so that the field of grade may adjust the grade if necessary.
9. The Contractor shall comply with the City of Wichita specifications for Sanitary Sewer Obstructions for work involving grading of the Asphalt Pavement.

SCALE:
 Plan 1"=30'
 Profile Horiz 1"=50'
 Vert 1"=5'

* Remove existing 4 CI pipe as required to construct MH 3



As built 7-10-78

CITY OF WICHITA
 SEWERAGE DEPARTMENT

LEAR JET SEWER

Professional Engineer's Commission

11