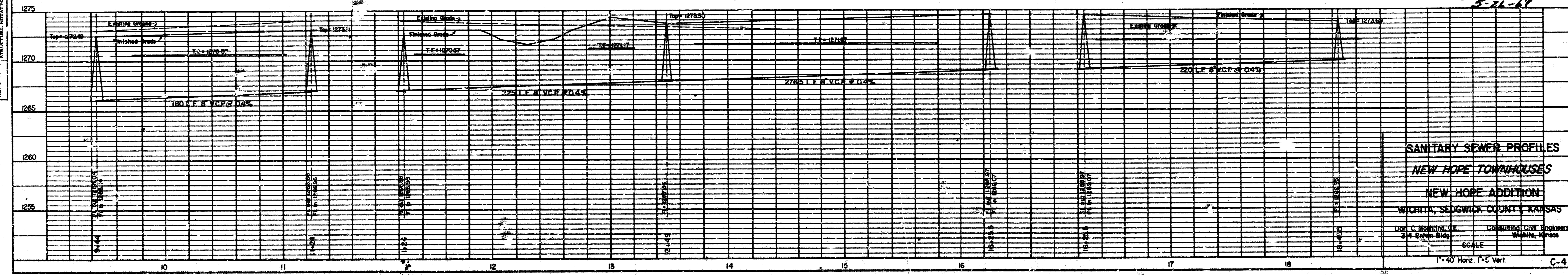
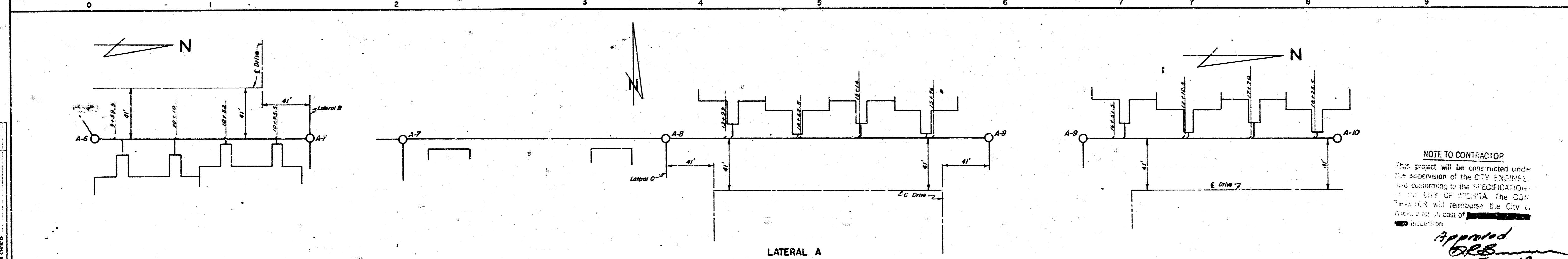
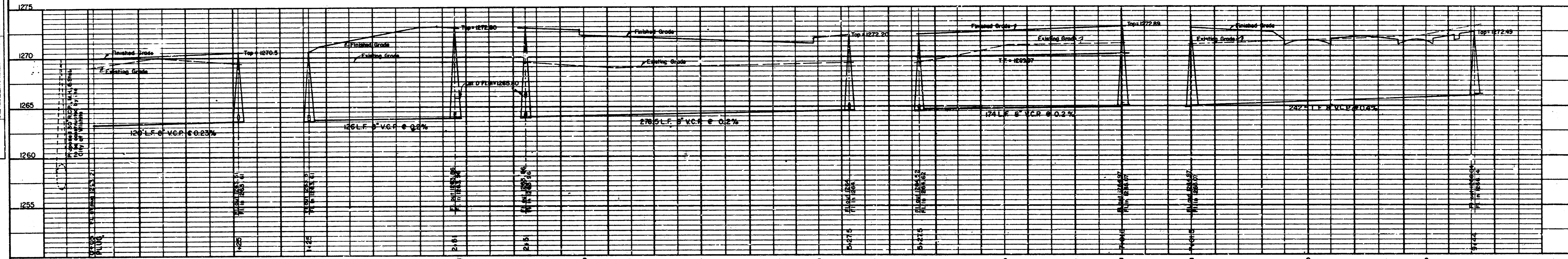
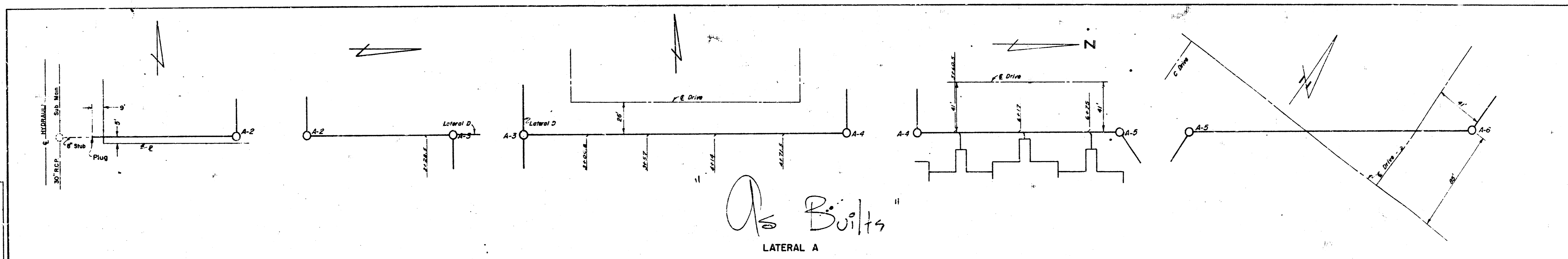


NOTE TO CONTRACTOR:
 This project will be constructed under the supervision of the CITY ENGINEER and according to the SPECIFICATIONS of the CITY OF WICHITA. The CONTRACTOR will reimburse the City of WICHITA for all cost of construction.

SANITARY SEWER AREA PLAN
 NEW HOPE TOWNHOUSES
 NEW HOPE ADDITION
 WICHITA, SEDGWICK COUNTY, KANSAS
 Don C. Moshring, C.E.
 314 Brown Bldg. Consulting Civil Engineers
 Wichita, Kansas

DATE: _____ BY: _____
 PLAN: _____
 CHECKED: _____
 IN CHARGE: _____
 NO. OF REVISIONS: _____
 NO. OF SHEETS CHECKED: _____

DATE: _____ BY: _____
 PROFILE: _____
 CHECKED: _____
 IN CHARGE: _____
 NO. OF REVISIONS: _____



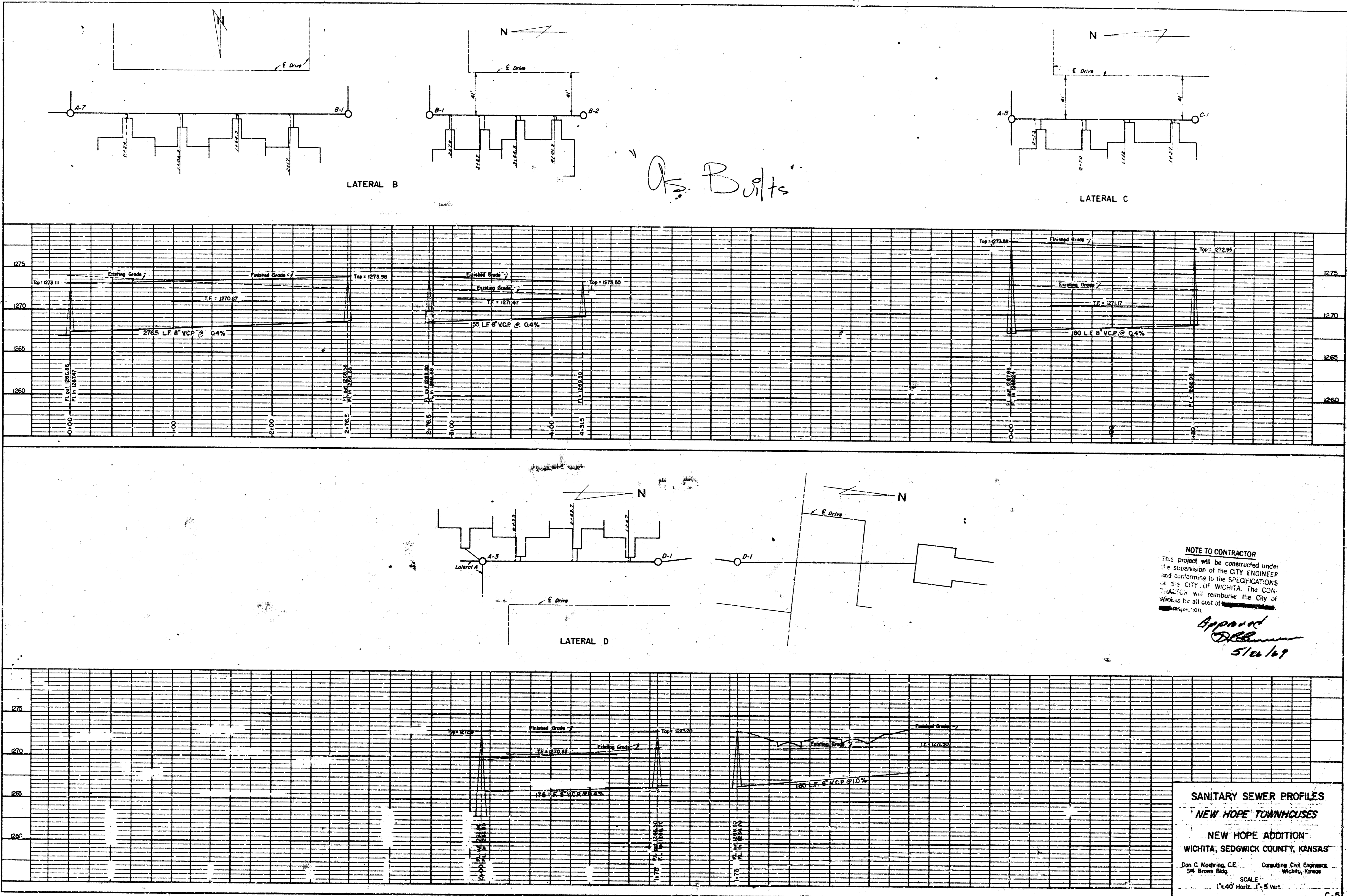
NOTE TO CONTRACTOR
 This project will be constructed under the supervision of the CITY ENGINEER and according to the SPECIFICATIONS of the CITY OF WICHITA. The CONTRACTOR will reimburse the City for the cost of any inspection.

Approved
EBB
 5-11-67

SANITARY SEWER PROFILES
NEW HOPE TOWNHOUSES
NEW HOPE ADDITION
WICHITA, SEDGWICK COUNTY, KANSAS
 100% CONSTRUCTION OF 24" DIAMETER 15' DEPTH
 1" = 40' HORIZ. 1" = 4' VERT.
 C-4

PLAN
 DATE: _____
 SHEET NO.: _____
 PROJECT: _____
 DRAWN BY: _____
 CHECKED BY: _____
 IN CHARGE: _____

PROFILE
 DATE: _____
 SHEET NO.: _____
 PROJECT: _____
 DRAWN BY: _____
 CHECKED BY: _____
 IN CHARGE: _____

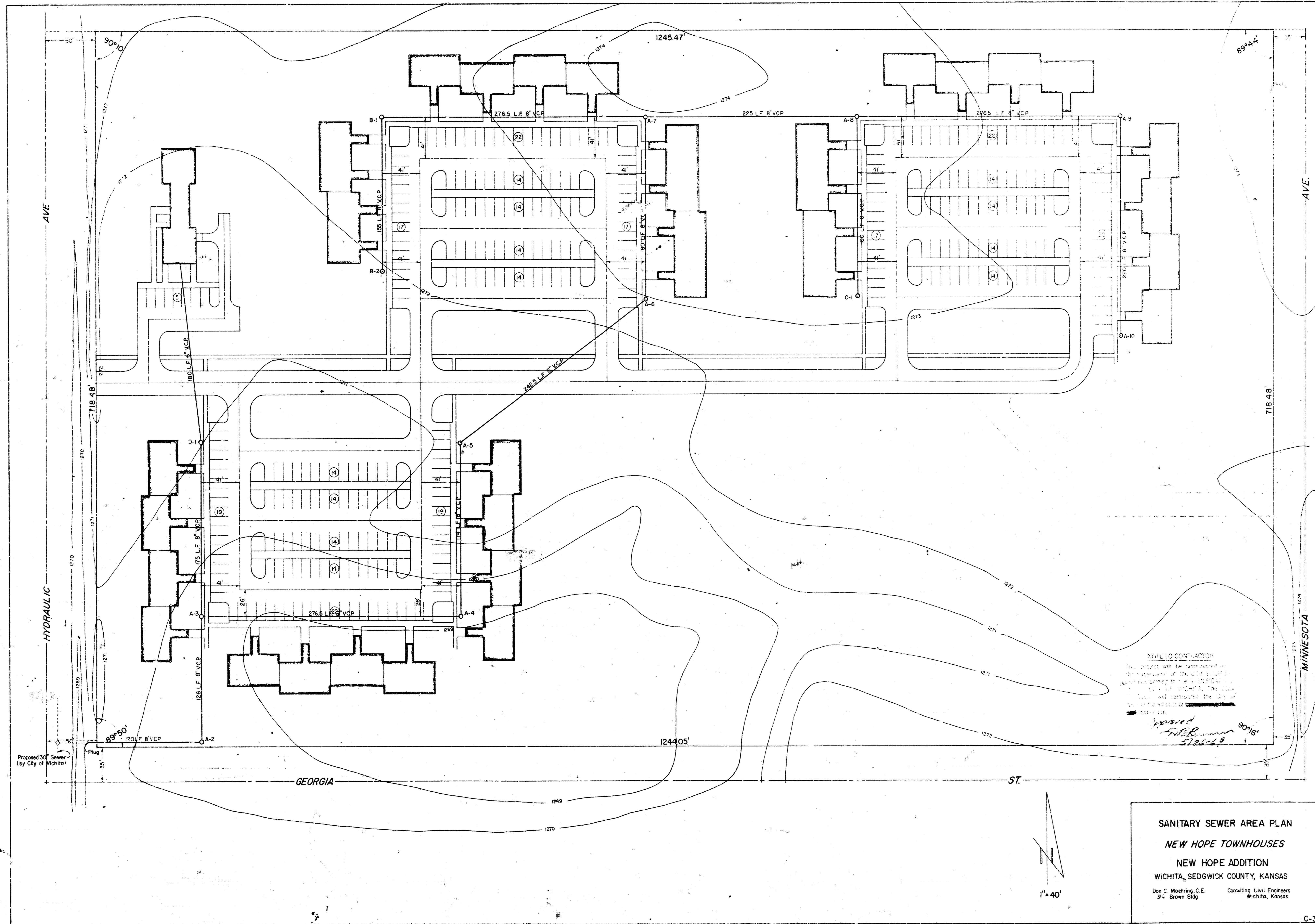


As Bolts

NOTE TO CONTRACTOR
 This project will be constructed under the supervision of the CITY ENGINEER and conforming to the SPECIFICATIONS of the CITY OF WICHITA. The CONTRACTOR will reimburse the City of Wichita for all cost of _____.

Approved
D. C. Moebling
 5/12/19

SANITARY SEWER PROFILES
NEW HOPE TOWNHOUSES
NEW HOPE ADDITION
WICHITA, SEDGWICK COUNTY, KANSAS
 Dan C. Moebling, C.E. Consulting Civil Engineers
 348 Brown Bldg. Wichita, Kansas
 SCALE: 1" = 40' Horiz., 1" = 5' Vert.



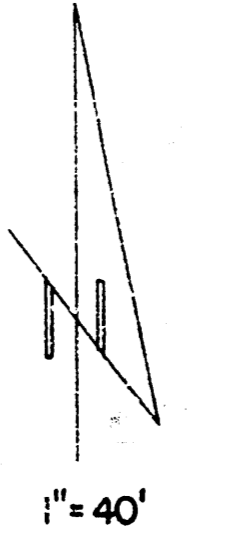
NOTE TO CONTRACTOR:
 THE CONTRACTOR SHALL VERIFY THE LOCATION AND DEPTH OF ALL EXISTING UTILITIES PRIOR TO CONSTRUCTION. THE CONTRACTOR SHALL BE RESPONSIBLE FOR OBTAINING ALL NECESSARY PERMITS FROM THE CITY OF WICHITA AND THE KANSAS DEPARTMENT OF REVENUE. THE CONTRACTOR SHALL MAINTAIN ALL EXISTING UTILITIES AND SHALL BE RESPONSIBLE FOR REPAIRING ANY DAMAGE TO EXISTING UTILITIES CAUSED BY THE CONSTRUCTION. THE CONTRACTOR SHALL MAINTAIN ACCESS TO ALL ADJACENT PROPERTIES AT ALL TIMES. THE CONTRACTOR SHALL MAINTAIN ALL NECESSARY RECORDS OF THE WORK PERFORMED.

David J. ...
 5/16/2019

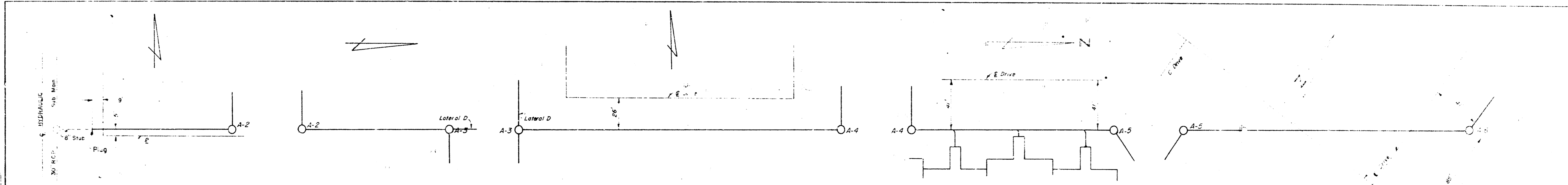
SANITARY SEWER AREA PLAN
NEW HOPE TOWNHOUSES
NEW HOPE ADDITION
WICHITA, SEDGWICK COUNTY, KANSAS

Don C. Maehring, C.E. Consulting Civil Engineers
 314 Brown Bldg Wichita, Kansas

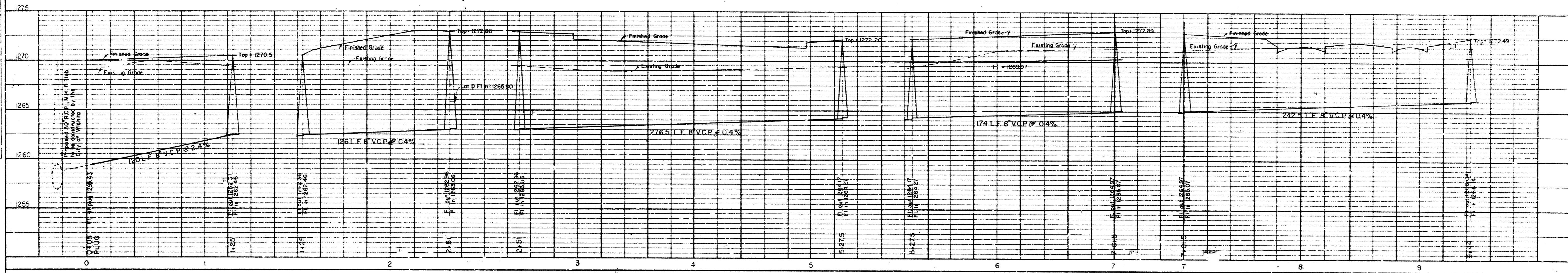
C-3



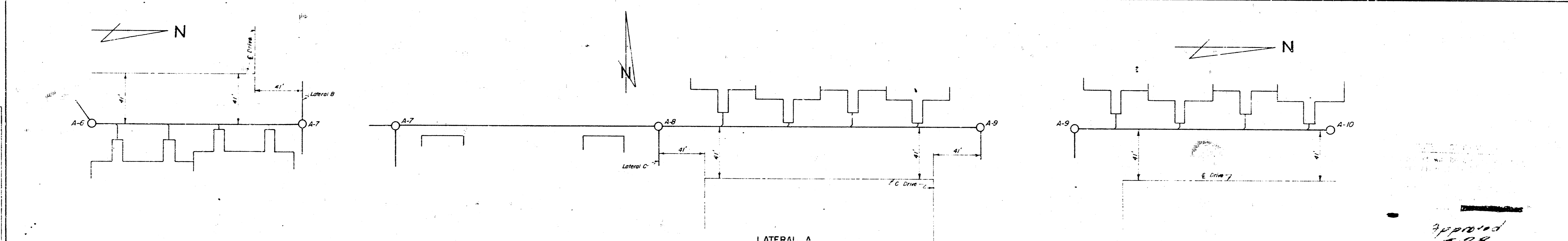
PLAN
 SHEET NO. 10
 DATE: 5/21/68
 PROJECT: NEW HOPE TOWNHOUSES
 WICHITA, KANSAS



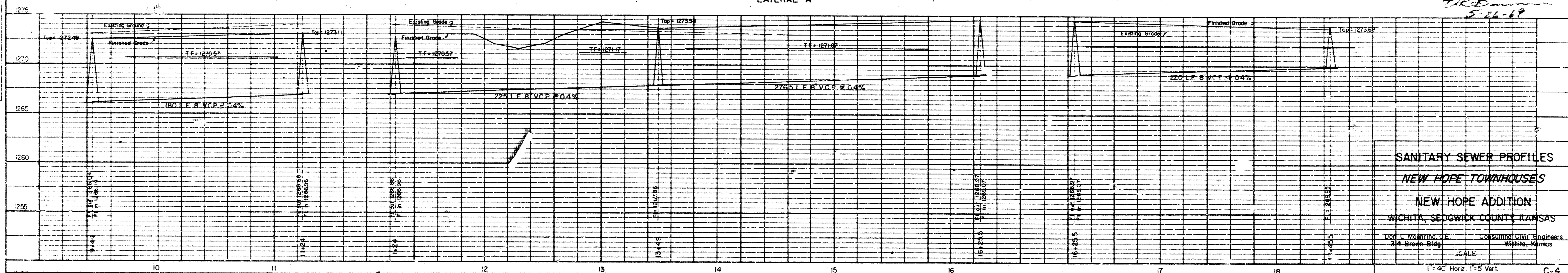
LATERAL A



PROFILE
 SHEET NO. 11
 DATE: 5/21/68
 PROJECT: NEW HOPE TOWNHOUSES
 WICHITA, KANSAS



LATERAL A



SANITARY SEWER PROFILES
 NEW HOPE TOWNHOUSES
 NEW HOPE ADDITION
 WICHITA, SEDGWICK COUNTY, KANSAS
 W.C. ROBERTS, INC. CONSULTING CIVIL ENGINEERS
 34 Grove Street
 Wichita, Kansas
 SCALE
 1" = 40' Horiz. 1" = 5' Vert.

