

BENCHMARK:
 CROSS CUT ON NORTH
 END OF WEST HEADWALL
 137.5' SOUTH & 12' WEST
 OF THE INTERSECTION OF
 29TH ST N & 127TH ST E.
 ELEV. = 1382.45 NAVD88

Q OF WEST EDGE OF
 CONCRETE DRIVE 31.4' NE
 OF THE EAST 1/4 CORNER
 OF SEC. 3, TWP 27-S,
 R-2-E.
 ELEV. = 1373.82 NAVD88

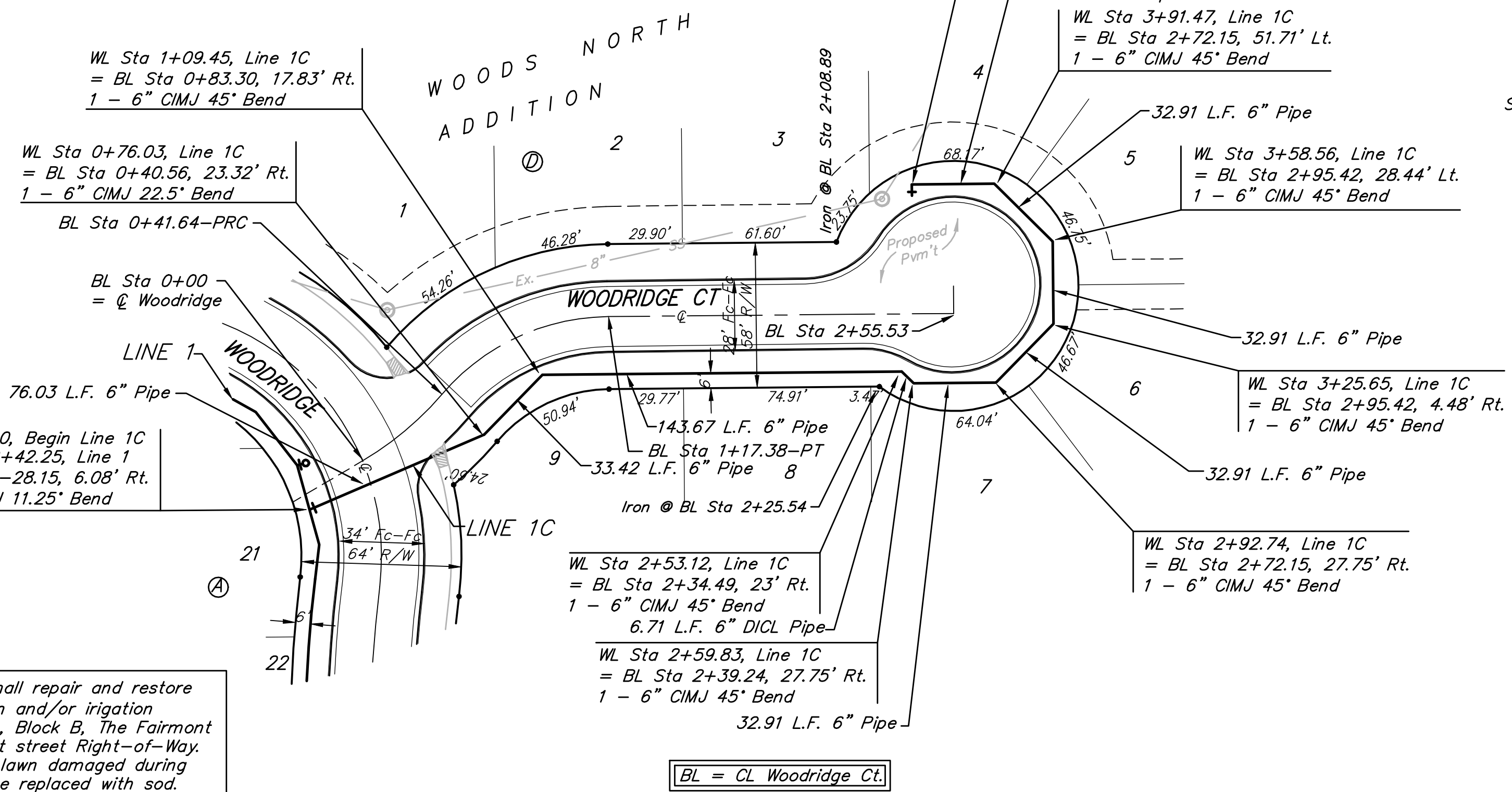
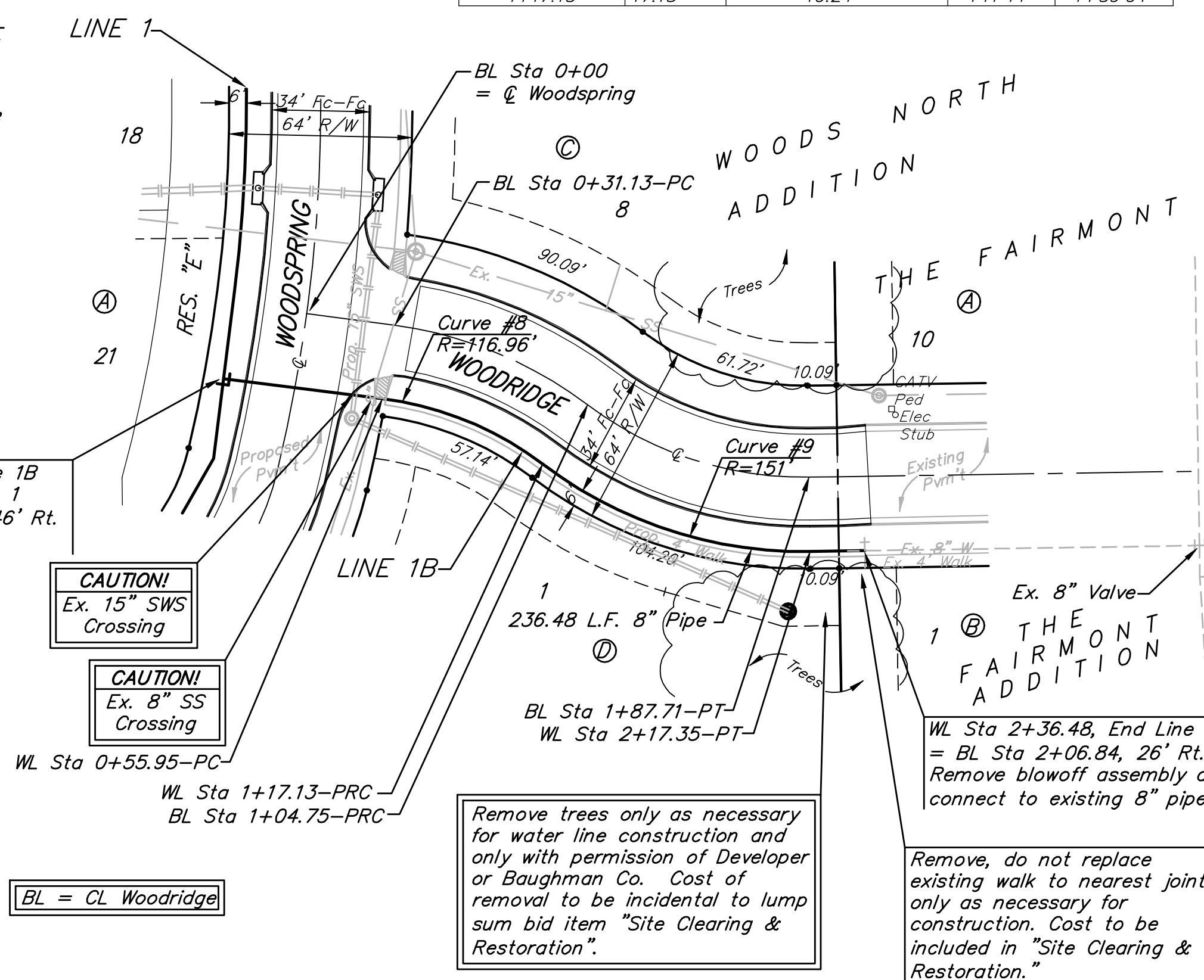
Curve Data Based on Waterline

Station	Arc	CHORD LENGTHS	Defl.	T. Defl.
0+59.95	-	6' Rt.	0'00'00"	0'00'00"
0+75.00	19.05'	18.05'	4'39'57"	4'39'57"
1+00.00	25.00'	23.67'	6'07'23"	10'47'20"
1+17.13	17.13'	16.24'	4'11'44"	14'59'04"

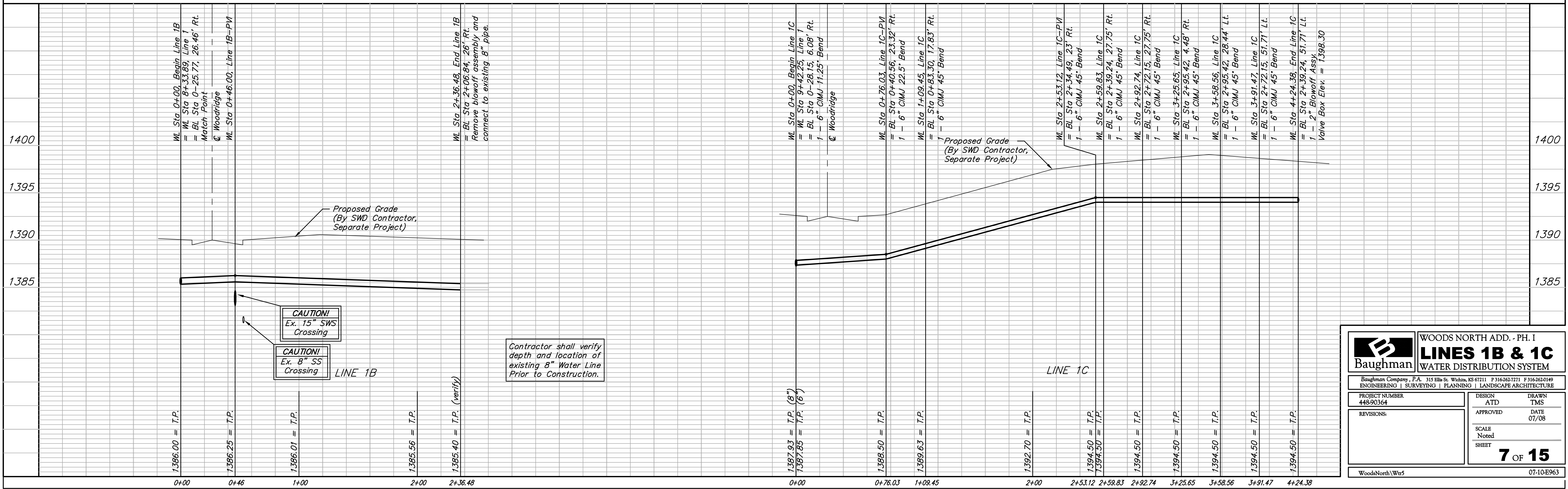
For radii under 200',
 contractor shall use
 short pipe lengths.

Curve Data Based on Waterline

Station	Arc	CHORD LENGTHS	Defl.	T. Defl.
1+17.13	-	6' Rt.	0'00'00"	0'00'00"
1+25.00	7.87'	8.18'	1'29'35"	1'29'35"
1+50.00	25.00'	25.96'	4'44'34"	6'14'09"
1+75.00	25.00'	25.96'	4'44'34"	10'58'43"
2+00.00	25.00'	25.96'	4'44'34"	15'43'17"
2+17.35	17.35'	18.03'	3'17'29"	19'00'47"



Scale: 1" = 40' Horizontal
 1" = 5' Vertical
 • = Iron



Baughman WOODS NORTH ADD. - PH. I
LINES 1B & 1C
 WATER DISTRIBUTION SYSTEM

Baughman Company, P.A. 315 Ellis St. Wichita, KS 67211 P 316-262-7271 F 316-262-0149
 ENGINEERING | SURVEYING | PLANNING | LANDSCAPE ARCHITECTURE

PROJECT NUMBER: 448-90364
 DESIGN: ATD
 DRAWN: TMS

APPROVED: [Signature] DATE: 07/08

REVISIONS: [Table]
 SCALE: Noted
 SHEET: 7 OF 15

WoodsNorth/Wr5 07-10-E963