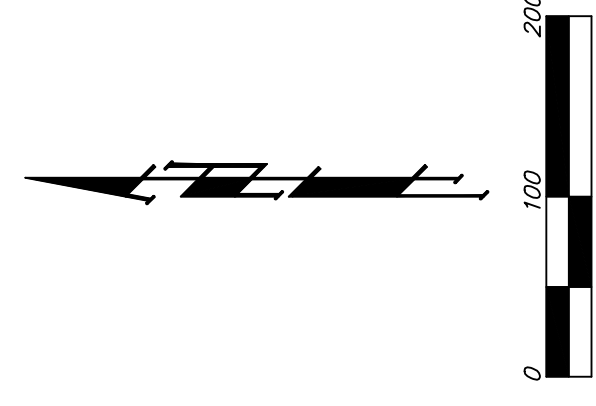
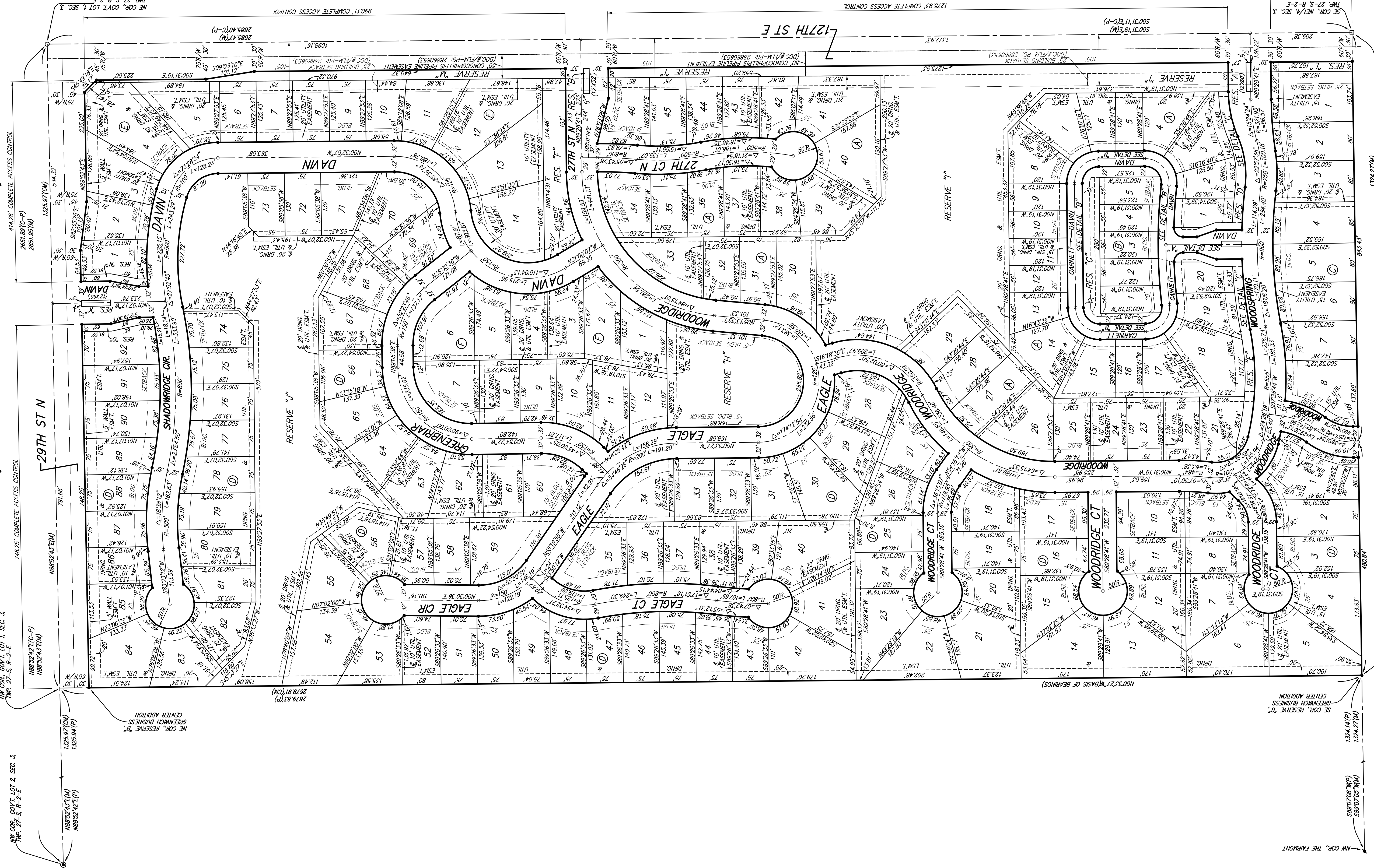


# WOODS NORTH ADDITION WICHITA, SEDGWICK COUNTY, KANSAS



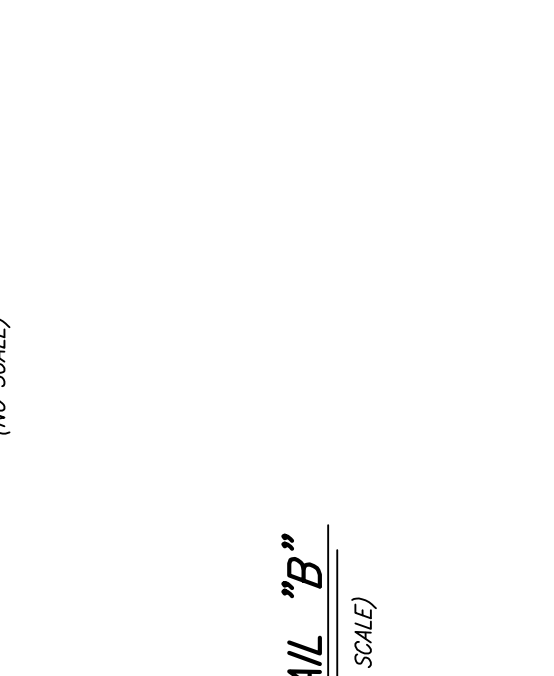
- = #4 REBAR W/ "BAUGHMAN" CAP (SET)
- = #4 REBAR W/ "BAUGHMAN" CAP (FOUND)
- = #4 REBAR W/ "BAUGHMAN" CAP (FOUND)
- = 3/8" IRON (FOUND)
- = MAG NAIL IN WALKER OVER STONE (FOUND)

- (M) = MEASURED
- (P) = PLATTED
- (CM) = MEASURED INFO
- (C-P) = PLATTED INFO

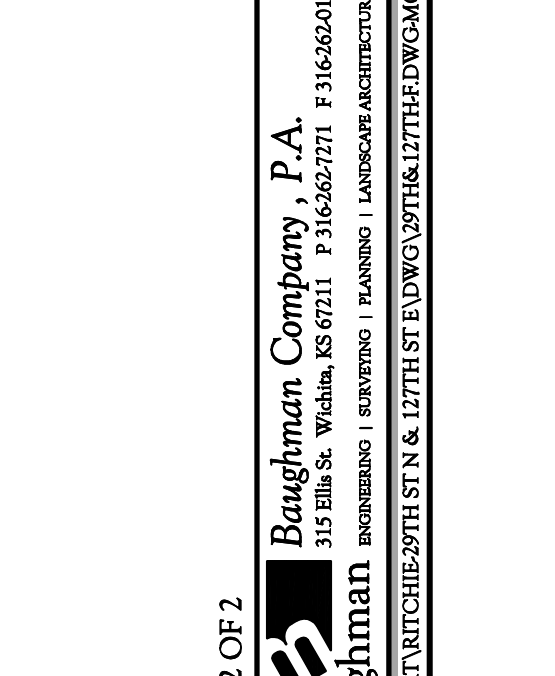
MINIMUM BUILDING PAD ELEVATIONS FOR LOWEST OPENING TO THE STRUCTURES			
LOT	BLOCK	ELEVATION	REMARKS
3-7	A	1380.0	
8-14	A	1380.0	
28-30	A	1380.0	
39-41	A	1380.0	
54-57	D	1380.0	
63-68	D	1380.0	
70-83	D	1380.0	

BENCHMARK:  
CROSS OUT ON NORTH END OF WEST HEADWALL  
127.5 SOUTH A 12 WEST OF THE INTERSECTION  
ELEV. = 1382.45 MATHS

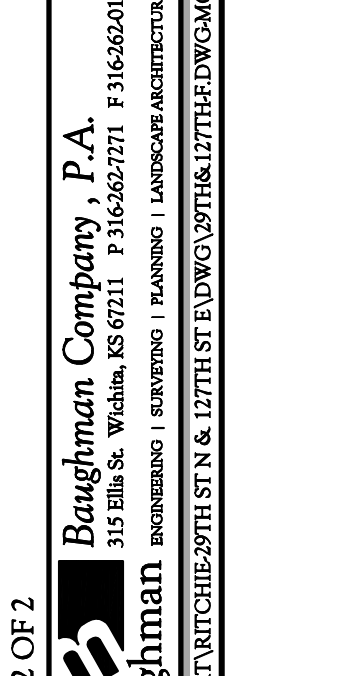
DETAIL "A"  
(NO SCALE)



DETAIL "B"  
(NO SCALE)



DETAIL "C"  
(NO SCALE)



NOTE:  
A MASTER GRADING PLAN FOR DRAINAGE HAS BEEN DEVELOPED FOR THIS CENTER ADDITION.  
ALL DRAINAGE EASEMENTS, RIGHTS-OF-WAY OR RESERVES SHALL REMAIN AT ESTABLISHED GRADES OR AS MODIFIED WITH THE APPROVAL OF THE CITY ENGINEER OF THE CITY OF WICHITA, KANSAS. NO OBSTRUCTIONS WHICH IMPED THE FLOW OF THIS DRAINAGE SYSTEM SHALL BE ALLOWED.