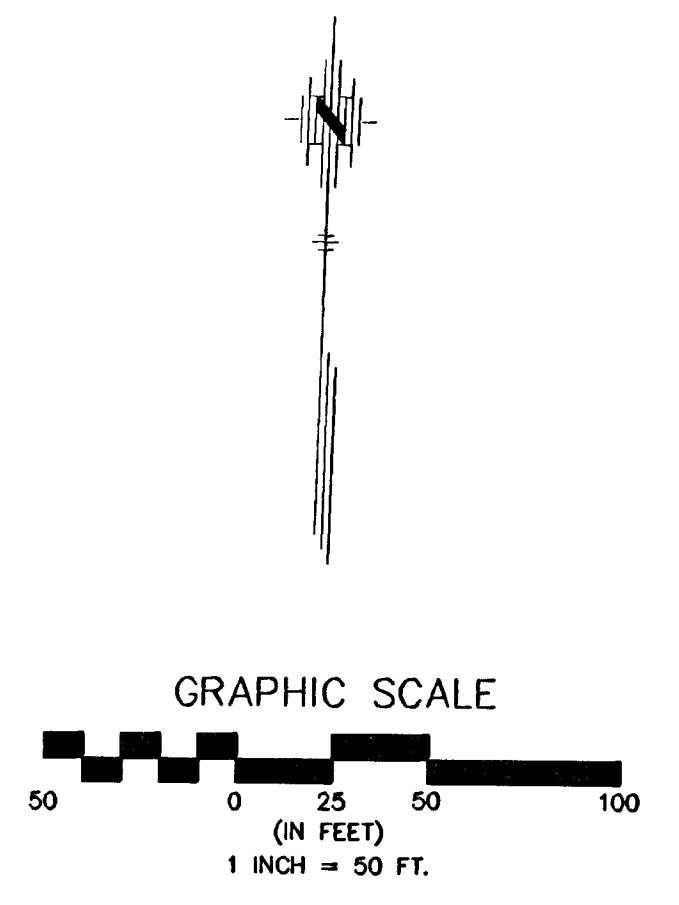
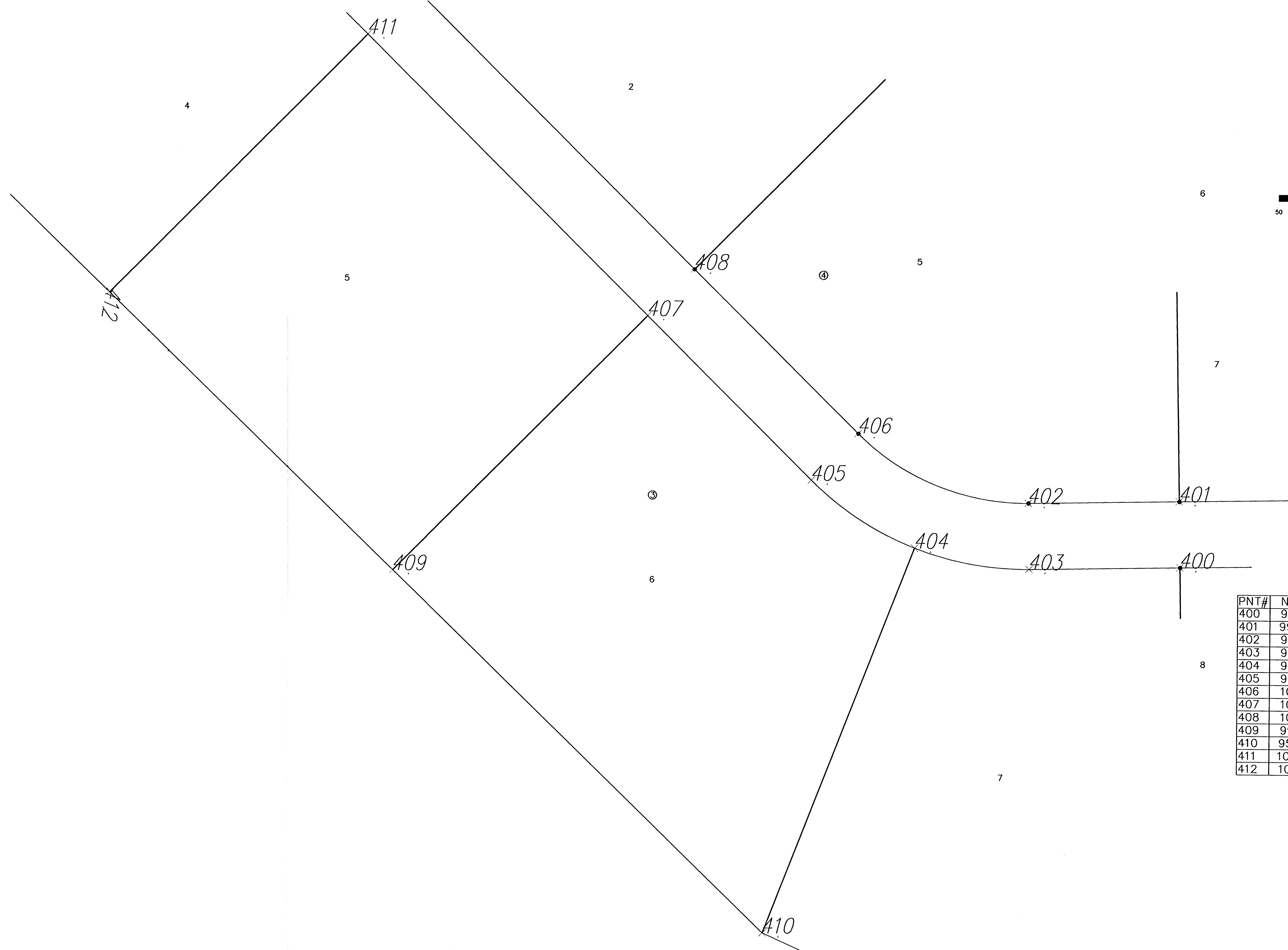


V:\B31\B31A\base.dwg Tue Jun 21 13:33:50 2005 Steve Schmidt, Poe & Associates



PNT#	NORTHING	EASTING
400	9910.736	20391.046
401	9980.725	20389.701
402	9977.654	20229.731
403	9907.667	20231.074
404	9929.041	20109.794
405	9999.954	20000.049
406	10049.752	20049.243
407	10172.49	19825.409
408	10222.29	19874.617
409	9901.024	19557.235
410	9519.819	19951.981
411	10467.659	19526.614
412	10192.799	19255.089

No.	Date	By	Approved	Revision
1				
<p>MEDITERRANEAN PLAZA ADDITION PRIVATE STREET IMPROVEMENTS COORDINATE POINTS LIST CITY OF WICHITA, KANSAS JAMES ARMAUR, P.E. - CITY ENGINEER 167 PPP (607839)</p>				
<p>POE & ASSOCIATES, INC. CONSULTING ENGINEERS 9940 E. Central, Suite 200 • Wichita, KS 67208-4242 Phone 316.685-1114 • FAX 316.685-4444</p>				
<p>FINAL</p>				
Designed By: T. Austin/S. Schmidt				
Drawn By: S. Schmidt				
Poe Job No.: 1831A				
Date: June 2005				
Sheet				
18 of 19				