

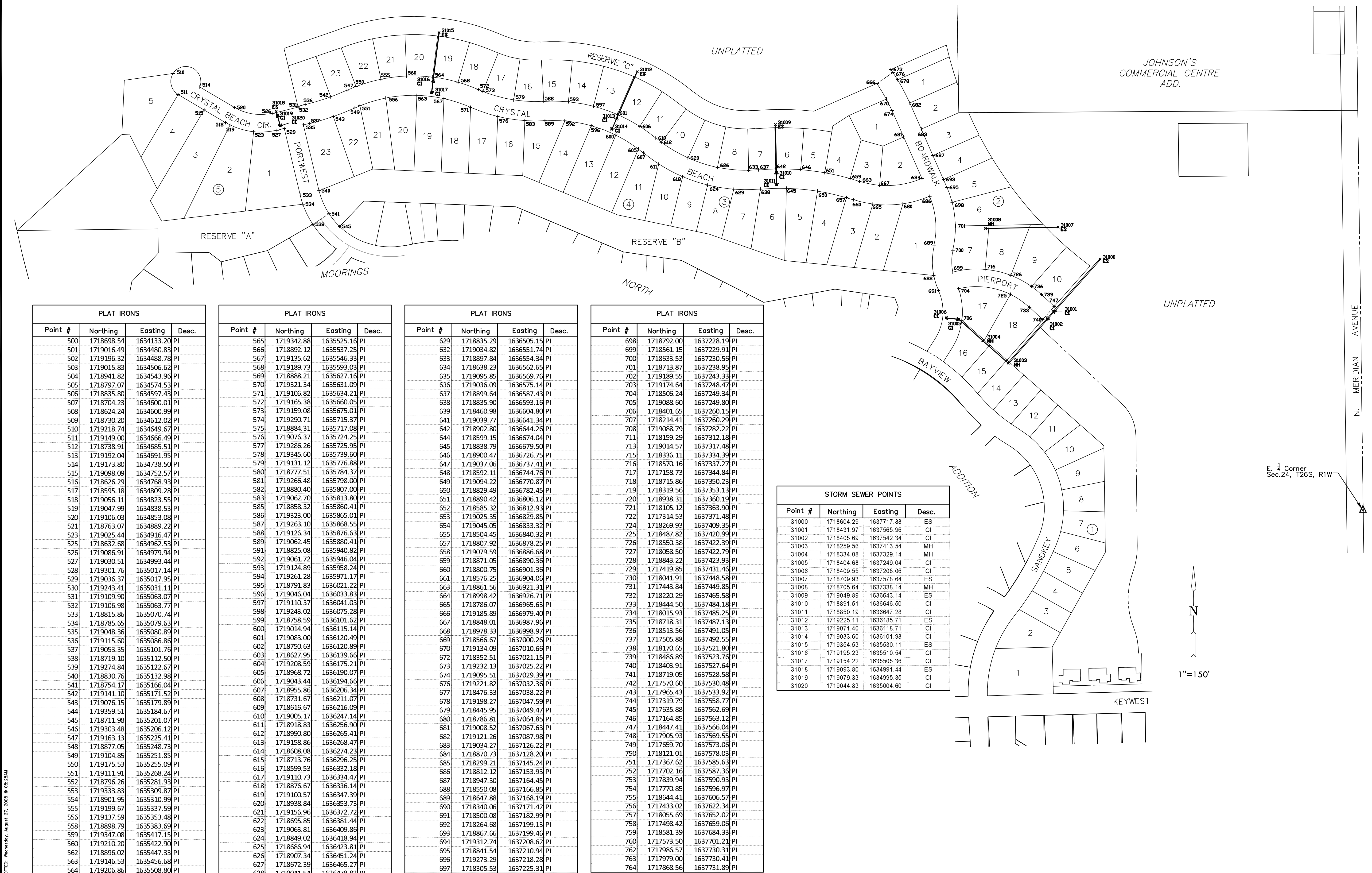
**STORM WATER SEWER #641
THE MOORINGS TENTH ADDITION**

BUBBLE MAP
SHEET TITLE
468-84469
PROJECT NUMBER

DESIGN BY: **DFL**
DRAWN BY: **KKL**
CHECKED BY: **GJA**

ISSUED
August 2008
REVISED

SHEET NO.
8 of 15



| PLAT IRONS | | | |
|------------|------------|------------|-------|
| Point # | Northing | Easting | Desc. |
| 500 | 1718698.54 | 1634133.20 | PI |
| 501 | 1719016.49 | 1634480.83 | PI |
| 502 | 1719196.32 | 1634488.78 | PI |
| 503 | 1719015.83 | 1634506.62 | PI |
| 504 | 1718941.82 | 1634543.96 | PI |
| 505 | 1718797.07 | 1634574.53 | PI |
| 506 | 1718835.80 | 1634597.43 | PI |
| 507 | 1718704.23 | 1634600.01 | PI |
| 508 | 1718624.24 | 1634600.99 | PI |
| 509 | 1718730.20 | 1634612.02 | PI |
| 510 | 1719218.74 | 1634649.67 | PI |
| 511 | 1719149.00 | 1634666.49 | PI |
| 512 | 1718738.91 | 1634685.51 | PI |
| 513 | 1719192.04 | 1634691.95 | PI |
| 514 | 1719173.80 | 1634738.50 | PI |
| 515 | 1719098.09 | 1634752.57 | PI |
| 516 | 1718626.29 | 1634768.93 | PI |
| 517 | 1718595.18 | 1634809.28 | PI |
| 518 | 1719056.11 | 1634823.55 | PI |
| 519 | 1719047.99 | 1634838.53 | PI |
| 520 | 1719106.03 | 1634853.08 | PI |
| 521 | 1718763.07 | 1634889.22 | PI |
| 523 | 1719025.44 | 1634916.47 | PI |
| 525 | 1718632.68 | 1634962.53 | PI |
| 526 | 1719086.91 | 1634979.94 | PI |
| 527 | 1719030.51 | 1634993.44 | PI |
| 528 | 1719301.76 | 1635017.14 | PI |
| 529 | 1719036.37 | 1635017.95 | PI |
| 530 | 1719243.41 | 1635031.11 | PI |
| 531 | 1719109.90 | 1635063.07 | PI |
| 532 | 1719106.98 | 1635063.77 | PI |
| 533 | 1718815.86 | 1635070.74 | PI |
| 534 | 1718785.65 | 1635079.63 | PI |
| 535 | 1719048.36 | 1635080.89 | PI |
| 536 | 1719115.60 | 1635086.86 | PI |
| 537 | 1719053.35 | 1635101.76 | PI |
| 538 | 1718719.10 | 1635112.50 | PI |
| 539 | 1719274.84 | 1635122.67 | PI |
| 540 | 1718830.76 | 1635132.98 | PI |
| 541 | 1718754.17 | 1635166.04 | PI |
| 542 | 1719141.10 | 1635171.52 | PI |
| 543 | 1719076.15 | 1635179.89 | PI |
| 544 | 1719359.51 | 1635184.67 | PI |
| 545 | 1718711.98 | 1635201.07 | PI |
| 546 | 1719303.48 | 1635206.12 | PI |
| 547 | 1719163.13 | 1635225.41 | PI |
| 548 | 1718877.05 | 1635248.73 | PI |
| 549 | 1719104.85 | 1635251.85 | PI |
| 550 | 1719175.53 | 1635255.09 | PI |
| 551 | 1719111.91 | 1635268.24 | PI |
| 552 | 1718796.26 | 1635281.93 | PI |
| 553 | 1719333.83 | 1635309.87 | PI |
| 554 | 1718901.95 | 1635310.99 | PI |
| 555 | 1719199.67 | 1635337.59 | PI |
| 556 | 1719137.59 | 1635353.48 | PI |
| 558 | 1718898.79 | 1635383.69 | PI |
| 559 | 1719347.08 | 1635417.15 | PI |
| 560 | 1719210.20 | 1635422.90 | PI |
| 562 | 1718896.02 | 1635447.33 | PI |
| 563 | 1719146.53 | 1635456.68 | PI |
| 564 | 1719206.86 | 1635508.80 | PI |

| PLAT IRONS | | | |
|------------|------------|------------|-------|
| Point # | Northing | Easting | Desc. |
| 565 | 1719342.88 | 1635525.16 | PI |
| 566 | 1718892.12 | 1635537.25 | PI |
| 567 | 1719135.62 | 1635546.33 | PI |
| 568 | 1719189.73 | 1635593.03 | PI |
| 569 | 1718888.21 | 1635627.16 | PI |
| 570 | 1719321.34 | 1635631.09 | PI |
| 571 | 1719106.82 | 1635634.21 | PI |
| 572 | 1719165.38 | 1635660.05 | PI |
| 573 | 1719159.08 | 1635675.01 | PI |
| 574 | 1719290.71 | 1635715.37 | PI |
| 575 | 1718884.31 | 1635717.08 | PI |
| 576 | 1719076.37 | 1635724.25 | PI |
| 577 | 1719286.26 | 1635725.95 | PI |
| 578 | 1719345.60 | 1635739.60 | PI |
| 579 | 1719131.12 | 1635776.88 | PI |
| 580 | 1718777.51 | 1635784.37 | PI |
| 581 | 1719266.48 | 1635798.00 | PI |
| 582 | 1718880.40 | 1635807.00 | PI |
| 583 | 1719062.70 | 1635813.80 | PI |
| 585 | 1718858.32 | 1635860.41 | PI |
| 586 | 1719323.00 | 1635865.01 | PI |
| 587 | 1719263.10 | 1635868.55 | PI |
| 588 | 1719126.34 | 1635876.63 | PI |
| 589 | 1719062.45 | 1635880.41 | PI |
| 591 | 1718825.08 | 1635940.82 | PI |
| 592 | 1719061.72 | 1635946.04 | PI |
| 593 | 1719124.89 | 1635958.24 | PI |
| 594 | 1719261.28 | 1635971.17 | PI |
| 595 | 1718791.83 | 1636021.22 | PI |
| 596 | 1719046.04 | 1636033.83 | PI |
| 597 | 1719110.37 | 1636041.03 | PI |
| 598 | 1719243.02 | 1636075.28 | PI |
| 599 | 1718758.59 | 1636101.62 | PI |
| 600 | 1719014.94 | 1636115.14 | PI |
| 601 | 1719083.00 | 1636120.49 | PI |
| 602 | 1718750.63 | 1636120.89 | PI |
| 603 | 1718627.95 | 1636139.66 | PI |
| 604 | 1719208.59 | 1636175.21 | PI |
| 605 | 1718968.72 | 1636190.07 | PI |
| 606 | 1719043.44 | 1636194.66 | PI |
| 607 | 1718955.86 | 1636206.34 | PI |
| 608 | 1718731.67 | 1636211.07 | PI |
| 609 | 1718616.67 | 1636216.09 | PI |
| 610 | 1719005.17 | 1636247.14 | PI |
| 611 | 1718918.83 | 1636256.90 | PI |
| 612 | 1718990.80 | 1636265.41 | PI |
| 613 | 1719158.86 | 1636268.47 | PI |
| 614 | 1718608.08 | 1636274.23 | PI |
| 615 | 1718713.76 | 1636296.25 | PI |
| 616 | 1718599.53 | 1636332.18 | PI |
| 617 | 1719110.73 | 1636334.47 | PI |
| 618 | 1718876.67 | 1636336.14 | PI |
| 619 | 1719100.57 | 1636347.39 | PI |
| 620 | 1718938.84 | 1636353.73 | PI |
| 621 | 1719156.96 | 1636372.72 | PI |
| 622 | 1718695.85 | 1636381.44 | PI |
| 623 | 1719063.81 | 1636409.86 | PI |
| 624 | 1718849.02 | 1636418.94 | PI |
| 625 | 1718686.94 | 1636423.81 | PI |
| 626 | 1718907.34 | 1636451.24 | PI |
| 627 | 1718672.39 | 1636465.27 | PI |
| 628 | 1719041.54 | 1636478.83 | PI |

| PLAT IRONS | | | |
|------------|------------|------------|-------|
| Point # | Northing | Easting | Desc. |
| 629 | 1718835.29 | 1636505.15 | PI |
| 632 | 1719034.82 | 1636551.74 | PI |
| 633 | 1718897.84 | 1636554.34 | PI |
| 634 | 1718638.23 | 1636562.65 | PI |
| 635 | 1719095.85 | 1636569.76 | PI |
| 636 | 1719036.09 | 1636575.14 | PI |
| 637 | 1718899.64 | 1636587.43 | PI |
| 638 | 1718835.90 | 1636593.16 | PI |
| 639 | 1718460.98 | 1636604.80 | PI |
| 641 | 1719039.77 | 1636641.34 | PI |
| 642 | 1718902.80 | 1636644.26 | PI |
| 644 | 1718599.15 | 1636674.04 | PI |
| 645 | 1718838.79 | 1636679.50 | PI |
| 646 | 1718900.47 | 1636726.75 | PI |
| 647 | 1719037.06 | 1636737.41 | PI |
| 648 | 1718592.11 | 1636744.76 | PI |
| 649 | 1719094.22 | 1636770.87 | PI |
| 650 | 1718829.49 | 1636782.45 | PI |
| 651 | 1718890.42 | 1636806.12 | PI |
| 652 | 1718585.32 | 1636812.93 | PI |
| 653 | 1719025.35 | 1636829.85 | PI |
| 654 | 1719045.05 | 1636833.32 | PI |
| 655 | 1718504.45 | 1636840.32 | PI |
| 657 | 1718807.92 | 1636878.25 | PI |
| 658 | 1719079.59 | 1636886.68 | PI |
| 659 | 1718871.05 | 1636890.36 | PI |
| 660 | 1718800.75 | 1636901.36 | PI |
| 661 | 1718576.25 | 1636904.06 | PI |
| 663 | 1718861.56 | 1636921.31 | PI |
| 664 | 1718998.42 | 1636926.71 | PI |
| 665 | 1718786.07 | 1636965.63 | PI |
| 666 | 1719185.89 | 1636979.40 | PI |
| 667 | 1718848.01 | 1636987.96 | PI |
| 668 | 1718978.33 | 1636998.97 | PI |
| 669 | 1718566.67 | 1637000.26 | PI |
| 670 | 1719134.09 | 1637010.66 | PI |
| 672 | 1718352.51 | 1637021.15 | PI |
| 673 | 1719232.13 | 1637025.22 | PI |
| 674 | 1719095.51 | 1637029.39 | PI |
| 676 | 1719221.82 | 1637032.36 | PI |
| 677 | 1718476.33 | 1637038.22 | PI |
| 678 | 1719198.27 | 1637047.59 | PI |
| 679 | 1718445.95 | 1637049.47 | PI |
| 680 | 1718786.81 | 1637064.85 | PI |
| 681 | 1719008.52 | 1637067.63 | PI |
| 682 | 1719121.26 | 1637087.98 | PI |
| 683 | 1719034.27 | 1637126.22 | PI |
| 684 | 1718870.73 | 1637128.20 | PI |
| 685 | 1718299.21 | 1637145.24 | PI |
| 686 | 1718812.12 | 1637153.93 | PI |
| 687 | 1718947.30 | 1637164.45 | PI |
| 688 | 1718550.08 | 1637166.85 | PI |
| 689 | 1718647.88 | 1637168.19 | PI |
| 690 | 1718340.06 | 1637171.42 | PI |
| 691 | 1718500.08 | 1637182.99 | PI |
| 692 | 1718264.68 | 1637199.13 | PI |
| 693 | 1718867.66 | 1637199.46 | PI |
| 694 | 1719312.74 | 1637208.62 | PI |
| 695 | 1718841.54 | 1637210.94 | PI |
| 696 | 1719273.29 | 1637218.28 | PI |
| 697 | 1718305.53 | 1637225.31 | PI |

| PLAT IRONS | | | |
|------------|--------------|------------|-------|
| Point # | Northing | Easting | Desc. |
| 698 | 1718792.00 | 1637228.19 | PI |
| 699 | 1718561.15 | 1637229.91 | PI |
| 700 | 1718633.53 | 1637230.56 | PI |
| 701 | 1718713.87 | 1637238.95 | PI |
| 702 | 1719189.55 | 1637243.33 | PI |
| 703 | 1719174.64 | 1637248.47 | PI |
| 704 | 1718506.24 | 1637249.34 | PI |
| 705 | 1719088.60 | 1637249.80 | PI |
| 706 | 1718401.65 | 1637260.15 | PI |
| 707 | 1718214.41 | 1637260.29 | PI |
| 708 | 1719088.79 | 1637282.22 | PI |
| 711 | 1718159.29 | 1637312.18 | PI |
| 713 | 1719014.57 | 1637317.48 | PI |
| 715 | 1718336.11 | 1637334.39 | PI |
| 716 | 1718570.16 | 1637337.27 | PI |
| 717 | 1717158.73 | 1637344.84 | PI |
| 718 | 1718715.86 | 1637350.23 | PI |
| 719 | 1718319.56 | 1637353.13 | PI |
| 720 | 1718938.31 | 1637360.19 | PI |
| 721 | 1718105.12 | 1637363.90 | PI |
| 722 | 1717314.53 | 1637371.48 | PI |
| 724 | 1718269.93 | 1637409.35 | PI |
| 725 | 1718487.82 | 1637420.99 | PI |
| 726 | 1718550.38 | 1637422.39 | PI |
| 727 | 1718058.50 | 1637422.79 | PI |
| 728 | 1718843.22 | 1637423.93 | PI |
| 729 | 1717419.85 | 1637431.46 | PI |
| 730 | 1718041.91 | 1637448.58 | PI |
| 731 | 1717443.84 | 1637449.85 | PI |
| 732 | 1718220.29 | 1637465.58 | PI |
| 733 | 1718444.50 | 1637484.18 | PI |
| 734 | 1718015.93 | 1637485.25 | PI |
| 735 | 1718718.31 | 1637487.13 | PI |
| 736 | 1718513.56 | 1637491.05 | PI |
| 737 | 1717505.88 | 1637492.55 | PI |
| 738 | 1718170.65 | 1637521.80 | PI |
| 739 | 1718486.89 | 1637523.76 | PI |
| 740 | 1718403.91 | 1637527.64 | PI |
| 741 | 1718719.05 | 1637528.58 | PI |
| 742 | 1717570.60 | 1637530.48 | PI |
| 743 | 1717965.43 | 1637533.92 | PI |
| 744 | 1717319.79 | 1637558.77 | PI |
| 745 | 1717635.88 | 1637562.69 | PI |
| 746 | 1717164.85 | 1637563.12 | PI |
| 747 | 1718447.41 | 1637566.04 | PI |
| 748 | 1717905.93 | 1637569.55 | PI |
| 749 | 1717659.70 | 1637573.06 | PI |
| 750 | 1718121.01 | 1637578.03 | PI |
| 751 | 1717367.62 | 1637585.63 | PI |
| 752 | 1717702.16</ | | |