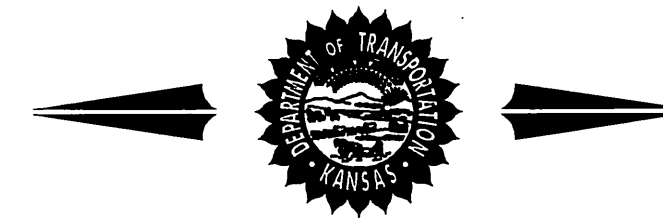


STATE OF KANSAS
DEPARTMENT OF TRANSPORTATION



PLAN AND PROFILE OF PROPOSED

21ST STREET N. FROM K-96 TO 159TH STREET E.

KDOT PROJECT NO. 87 N-0423-01

PART A: CITY OF WICHITA PROJECT NO. 472-84636 O.C.A. NO. 706973

FEDERAL AID PROJECT NO. TIP-N 042(301)

PART B: CITY OF WICHITA PROJECT NO. 448-90380 O.C.A. NO. 635690

(NON-PARTICIPATING)

SEDGWICK COUNTY

STATE	PROJECT NO.	YEAR	SHEET NO.	TOTAL SHEETS
KANSAS	87 N-0423-01	2008	1	282
FEDERAL AID PROJ. NO. TIP-N 042(301)				706973

GRADING & SURFACING	766177
SEEDING & SODDING	766178
PAVEMENT MARKING	766179
TRAFFIC SIGNALIZATION	766183
TOTAL	635690

GENERAL NOTES

ALL CONSTRUCTION WORK AND MATERIAL IN THIS PROJECT SHALL COMPLY WITH CITY OF WICHITA STANDARD SPECIFICATIONS FOR THE CONSTRUCTION OF CITY PROJECTS UNLESS OTHERWISE NOTED IN THE PLANS OR SPECIAL PROVISIONS.

UNDERGROUND UTILITY SERVICE LINES AND OVERHEAD UTILITY POLE LINES ARE TO BE ADJUSTED AS NECESSARY BY OTHERS PRIOR TO CONSTRUCTION UNLESS THE PLANS SPECIFICALLY CALL FOR THEIR ADJUSTMENT BY THE CONTRACTOR. EXISTING UTILITIES AND THEIR LOCATION, AS SHOWN ON THE PLANS, REPRESENT THE BEST INFORMATION OBTAINABLE FOR DESIGN. LOCATION INFORMATION HAS BEEN OBTAINED FROM THE VARIOUS UTILITY COMPANIES AND IS EITHER FROM COMPANY RECORD DRAWINGS OR COMPANY PROVIDED FIELD LOCATIONS. THE CONTRACTOR WILL BE REQUIRED TO WORK AROUND EXISTING UTILITIES WITHIN THE RIGHT-OF-WAY WHICH DO NOT CONFLICT WITH PROPOSED CONSTRUCTION.

TREES AND SHRUBS IN PUBLIC RIGHT-OF-WAY WHICH ARE IN DIRECT CONFLICT WITH PROPOSED NEW CONSTRUCTION SHALL BE REMOVED BY THE CONTRACTOR WITH THE ENGINEER'S APPROVAL. TREES AND SHRUBS WHICH ARE NOT IN DIRECT CONFLICT WITH PROPOSED NEW CONSTRUCTION SHALL BE SAVED AND PROTECTED FROM DAMAGE.

RUBBLE FROM THE REMOVAL OF MISCELLANEOUS STRUCTURES SHALL BE DISPOSED OF ON SITES TO BE PROVIDED BY THE CONTRACTOR AND APPROVED AS NOTED BELOW.

ALL DISPOSAL SITES MUST BE APPROVED BY THE KANSAS DEPARTMENT OF HEALTH AND ENVIRONMENT. MATERIAL EITHER STOCKPILED OR DISPOSED OF IN A FLOOD PLAIN WOULD REQUIRE A KANSAS STATE BOARD OF AGRICULTURE PERMIT. ANY MATERIAL DUMPED IN WATERS OF THE UNITED STATES OR WETLANDS IS SUBJECT TO U.S. CORPS OF ENGINEERS PERMITTING REGULATIONS. ANY MATERIAL BURIED OR STOCKPILED BEYOND APPROVED CONSTRUCTION LIMITS WOULD REQUIRE ADDITIONAL ARCHEOLOGICAL INVESTIGATIONS UNLESS BURIED IN A PREVIOUSLY APPROVED BORROW LOCATION.

CONTRACTOR SHALL SATISFY HIMSELF OF SURFACE AND SUBSURFACE CONDITIONS PRIOR TO BIDDING.

FIELD LOCATE ALL EXISTING UTILITIES PRIOR TO BEGINNING ANY EXCAVATION WORK. CONTACT THE KANSAS ONE-CALL SYSTEM AT 316-687-2470 AT LEAST 48 HOURS IN ADVANCE TO REQUEST FIELD LOCATES. FOR UTILITIES THAT ARE NOT MEMBERS OF THE KANSAS ONE-CALL SYSTEM, CONTACT THOSE COMPANIES DIRECTLY.

CONTRACTOR IS RESPONSIBLE FOR PRESERVING EXISTING PROPERTY IRONS. RE-ESTABLISH ANY EXISTING PROPERTY IRONS WHICH ARE DAMAGED OR DESTROYED BY CONSTRUCTION OPERATIONS, OR WHICH ARE COVERED BY 12" OR MORE OF FILL MATERIAL BY THIS PROJECT. SUCH IRONS SHALL BE RE-ESTABLISHED BY A LICENSED LAND SURVEYOR IN ACCORDANCE WITH STATE LAWS AND AT NO ADDITIONAL COST TO THE CITY.

THE WATER DEPARTMENT SHALL FIELD LOCATE WATER VALVES ONE TIME DURING CONSTRUCTION WHEN REQUESTED BY THE CONTRACTOR. IT SHALL BE THE CONTRACTOR'S RESPONSIBILITY TO PRESERVE SUCH FIELD LOCATIONS DURING THE CONSTRUCTION PROCESS. WATER VALVES, WATER VALVE BOXES OR FIRE HYDRANTS DAMAGED DURING CONSTRUCTION SHALL BE REPAIRED BY THE CONTRACTOR AT HIS OWN EXPENSE.

WATER VALVES AND MANHOLES SHALL BE ADJUSTED BY THE CONTRACTOR TO MEET FINAL GRADES, AS DIRECTED BY THE ENGINEER.

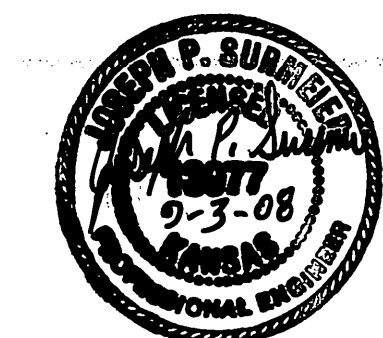
THE CONTRACTOR SHALL REMOVE EXISTING ROAD SIGNS THAT INTERFERE WITH CONSTRUCTION. SIGNS DAMAGED THRU NEGLIGENCE OF THE CONTRACTOR SHALL BE REPLACED BY THE CONTRACTOR AT NO COST TO THE CITY. THE CONTRACTOR SHALL STOCKPILE THE SIGNS ALONG THE R/W (AT A CENTRAL LOCATION) FOR REMOVAL BY CITY FORCES.

ALL EXISTING PAVEMENT AND CURB AND GUTTER WITHIN THE CONSTRUCTION LIMITS SHALL BE SAW CUT, FULL DEPTH, TO THE NEAT LINES SHOWN ON THE PLANS, OR TO THE NEAREST JOINT, AND REMOVED, UNLESS OTHERWISE NOTED. SAW CUTTING SHALL BE SUBSIDIARY TO THE BID ITEM "PAVEMENT REMOVED".

ALL LABOR, MATERIALS, AND EQUIPMENT NECESSARY TO MAKE CONNECTIONS TO EXISTING PIPE OR EXISTING SMALL STRUCTURES SHALL NOT BE PAID FOR DIRECTLY; BUT SHALL BE SUBSIDIARY TO OTHER ITEMS OF THE CONTRACT.

PLANS PREPARED BY

Professional Engineering Consultants, P.A.
303 S. TOPEKA • WICHITA, KANSAS 67202
316-262-2691 • FAX 316-262-3003



APPROVED - DATE **SEP 2, 2008**

James L. Armour, P.E.
CITY ENGINEER
CITY OF WICHITA, SEDGWICK COUNTY, KANSAS
CITY NO. 472-84636

INDEX OF SHEETS

PART A:

1. Title Sheet
2. - 4. Typical Sections
5. - 46. 21st St. Plan & Profiles
47. - 52. 127th St. Plan & Profiles
53. - 56. 143rd St. Plan & Profiles
57. - 58. 159th St. Plan & Profiles
59. - 62. Coordinate Geometry Plans
63. Curve Stake Out Tables
64. - 68. Intersection Details
69. Concrete Pavement
70. Contraction Joint Dowel Assemblies
71. Curb, Gutter and Combined Curb & Gutter
72. - 73. Valley Gutter Details
74. Wheelchair Ramp Details
75. Sidewalk and Steps
76. - 78. Segmental Retaining Wall Details
79. Std. Type 1 Curb Inlet (L=10')
80. Reinforced Concrete Manhole
81. Manhole Adjustment Details
82. Miscellaneous Drainage Details
83. - 86. Schedule of Inlets and Manholes
87. Concrete End Sections (RCP)
88. - 109. RCB Details
110. RCB Auxiliary Details
111. Precast Concrete Box Culvert Details
112. Bridge Excavation
113. Supports and Spacers for Reinforcing Steel
114. - 116. Summary and Recapitulation of Quantities
117. - 121. Erosion Control - BMP's
122. - 123. SWPPP Plan
124. - 130. Landscape Plans
131. - 132. Traffic Signal Plan and Quantities (Founder's Circle)
133. - 134. Traffic Signal Plan and Quantities (127th St.)
135. - 136. Traffic Signal Plan and Quantities (143rd St.)
137. - 138. Traffic Signal Plan and Quantities (159th St.)
139. - 140. Traffic Signal Details
141. - 151. Signing & Marking Plans
152. Traffic Handling and Construction Sequence
153. - 193. Traffic Control Plans
194. Drainage Map
195. - 262. Cross-Sections (21st St.)
263. - 272. Cross-Sections (127th St.)
273. - 279. Cross-Sections (143rd St.)
280. - 282. Cross-Sections (159th St.)

PART B:

- B1. - B40. Waterline Improvements

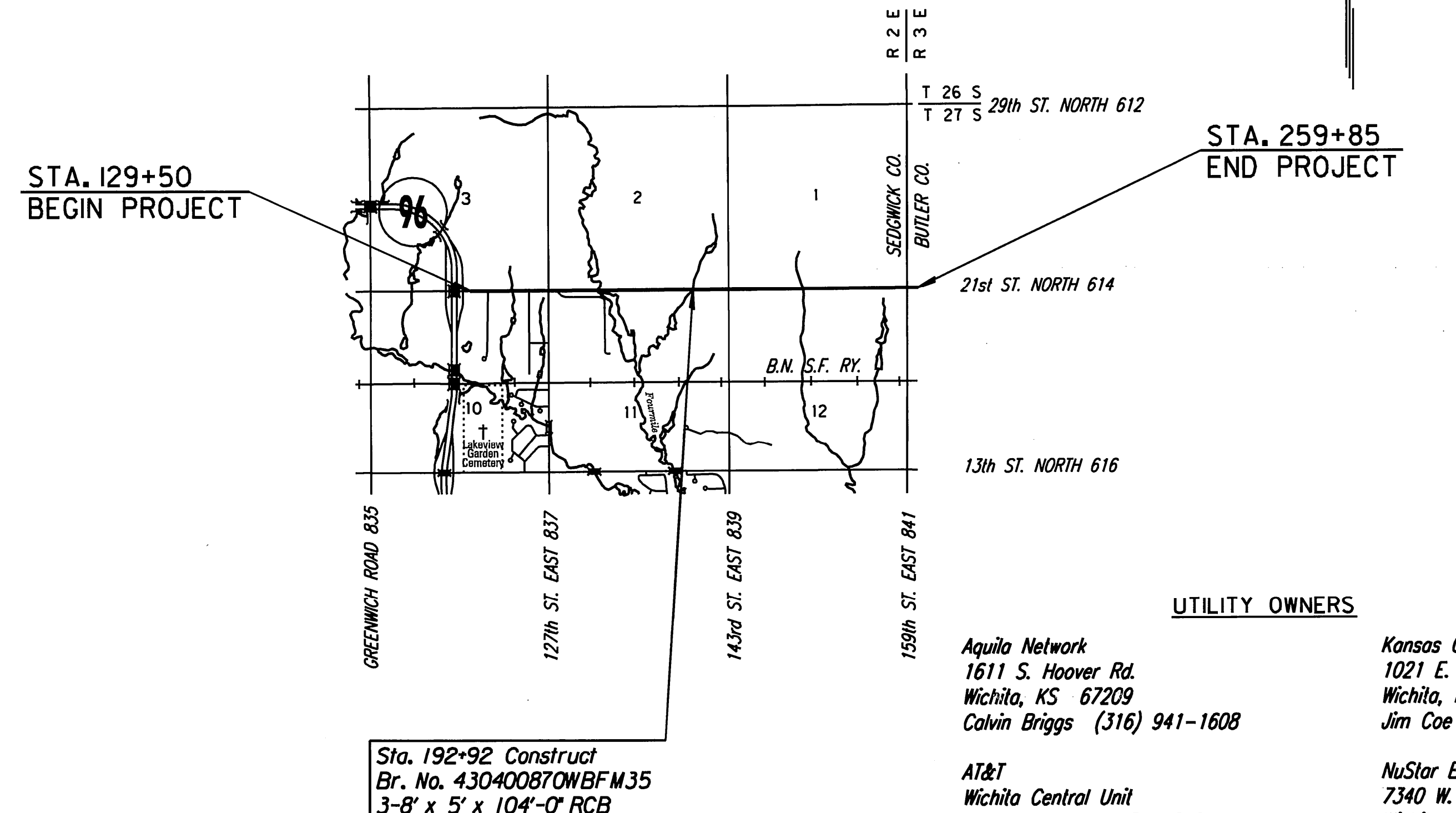
DESIGN DESIGNATION

AADT (2007)= 9,500
AADT (2030)= 24,000
DHV 10%
D
T 3%
V 40 MPH
C of A Partial
Clear Zone 6'

CONVENTIONAL SIGNS

COUNTY LINE	_____	CENTER LINE OF PROJECT	
CITY LIMITS	=====	TERRACE	
STATE OR NATIONAL LINE	-----	CULVERTS	
TOWNSHIP, SECTION or GRANT LINE	-----	DROP INLET & STORM SEWER	
PROPERTY LINE	-----	ACCESS CONTROL	
HIGHWAY FENCE	-----	POWER POLE	
EXISTING FENCE	-----	TELEPHONE POLE	
GUARD FENCE	-----	MARSH	
CONSTRUCTION LIMITS	-----	HEDGE	
RIGHT OF WAY LINE	-----	TREES	
TRAVELED WAY	-----	PROFILE ELEVATION	
RAILROADS	-----	STREAM or CREEK	

GROSS LENGTH OF PROJECT	13,035 FT.	
EXCEPTIONS	0	
ADDITIONS	0	
NET LENGTH OF PROJECT	13,035 FT.	2.47 MILES
NET LENGTH OF BRIDGES	0 FT.	0 MILES
NET LENGTH OF ROAD	13,035 FT.	2.47 MILES



UTILITY OWNERS

- Aquila Network**
1611 S. Hoover Rd.
Wichita, KS 67209
Calvin Briggs (316) 941-1608
- AT&T**
Wichita Central Unit
154 N. Broadway, Rm. 210
Wichita, KS 67202
Jason Edwards (316) 268-2008
- City of Andover**
909 N. Andover Rd.
P.O. Box 295
Andover, KS 67002
Les Mangus (316) 733-1303, Ext. 223
- City of Benton**
P.O. Box 388
154 S. Main
Benton, KS 67017
Dale Shaffer (316) 778-1625
- ConocoPhillips**
8001 Oak Knoll
Wichita, KS 67207
Mr. Steve Brunton (316) 681-2081
- Cox Communications**
Engineering Department
901 George Washington Blvd.
Wichita, KS 67211
Eva Moore (316) 262-4270, Ext. 7204
- Kansas Gas Service**
1021 E. 26th St. N.
Wichita, KS 67219
Jim Coe (316) 832-3126
- NuStar Energy (formerly KANEB)**
7340 W. 21st Street North, Suite 200
Wichita, KS 67205
Mr. Doug Perkins (316) 721-7040
- RWD #5**
700 N. Main
P.O. Box 56
Wichita, KS 67207
Ms. Pat Shaffer (316) 778-1631
- Westar Energy**
4001 NW 14th Street
Topeka, KS 66601
Dale Clements (785) 575-1231
- Wichita Water & Sewer Department**
8th Floor - City Hall
455 N. Main
Wichita, KS 67202
Bill Perkins (316) 268-4555

DSNR: JPS OPER: DRP SCALE: 1/2001/01616/PLAN/TITLEV.DGN LAST REV: 6-17-2008 BY: svb