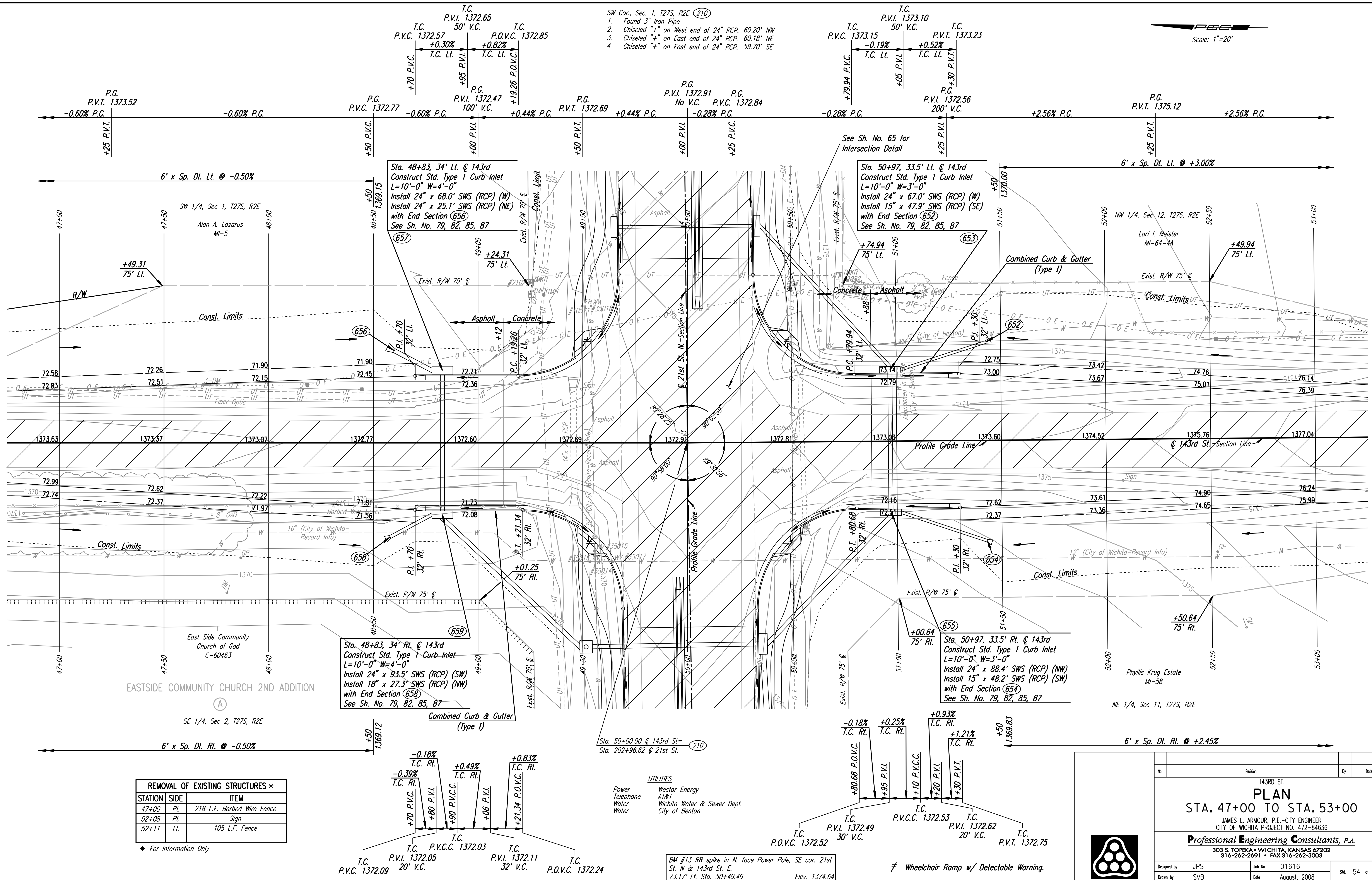


DSNR: JPS OPER: DRP SCALE: 1"=20' 5-18-2004  
 I:\2001\01616\PLAN\SR143RD2.DGN 5-20-2008 BY: svb

- SW Cor., Sec. 1, T27S, R2E (210)
1. Found 3" Iron Pipe
  2. Chiseled "+" on West end of 24" RCP. 60.20' NW
  3. Chiseled "+" on East end of 24" RCP. 60.18' NE
  4. Chiseled "+" on East end of 24" RCP. 59.70' SE

Scale: 1"=20'



**REMOVAL OF EXISTING STRUCTURES \***

STATION	SIDE	ITEM
47+00	Rt.	218 L.F. Barbed Wire Fence
52+08	Rt.	Sign
52+11	Lt.	105 L.F. Fence

\* For Information Only

- UTILITIES**
- Power: Westar Energy
  - Telephone: AT&T
  - Water: Wichita Water & Sewer Dept.
  - Water: City of Benton

BM #13 RR spike in N. face Power Pole, SE cor. 21st St. N & 143rd St. E.  
 73.17' Lt. Sta. 50+49.49 Elev. 1374.64

≠ Wheelchair Ramp w/ Detectable Warning.

No.	Revision	By	Date
	143RD ST.		

**PLAN**  
**STA. 47+00 TO STA. 53+00**  
 JAMES L. ARMOUR, P.E. - CITY ENGINEER  
 CITY OF WICHITA PROJECT NO. 472-84636  
**Professional Engineering Consultants, P.A.**  
 303 S. TOPEKA • WICHITA, KANSAS 67202  
 316-262-2691 • FAX 316-262-3003

Designed by	JPS	Job No.	01616
Drawn by	SVB	Date	August, 2008

Sht. 54 of 282