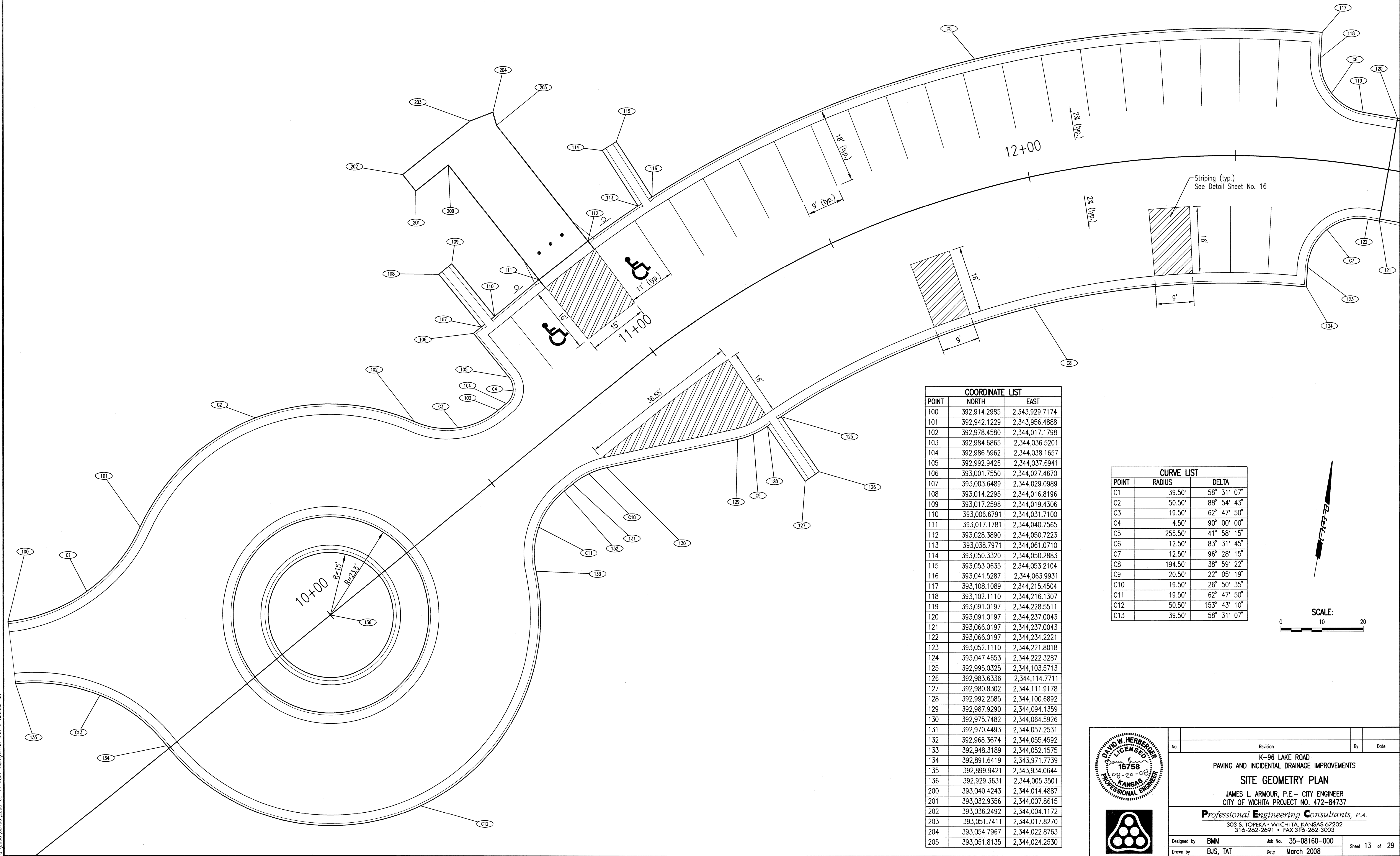
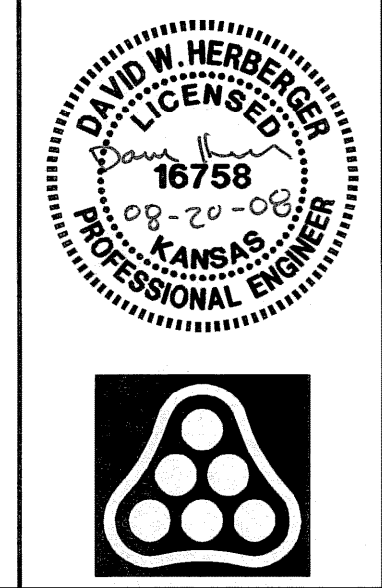
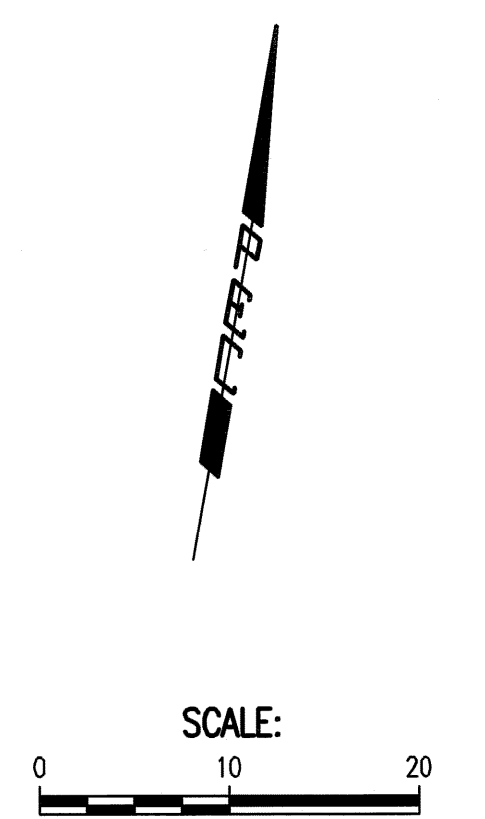


Saved 08-18-2008 7:52:19 PM by JAI  
 03/20/08 08:16:00 from I:\user\08160-000-C-Stack\Plan



COORDINATE LIST		
POINT	NORTH	EAST
100	392,914.2985	2,343,929.7174
101	392,942.1229	2,343,956.4888
102	392,978.4580	2,344,017.1798
103	392,984.6865	2,344,036.5201
104	392,986.5962	2,344,038.1657
105	392,992.9426	2,344,037.6941
106	393,001.7550	2,344,027.4670
107	393,003.6489	2,344,029.0989
108	393,014.2295	2,344,016.8196
109	393,017.2598	2,344,019.4306
110	393,006.6791	2,344,031.7100
111	393,017.1781	2,344,040.7565
112	393,028.3890	2,344,050.7223
113	393,038.7971	2,344,061.0710
114	393,050.3320	2,344,050.2883
115	393,053.0635	2,344,053.2104
116	393,041.5287	2,344,063.9931
117	393,108.1089	2,344,215.4504
118	393,102.1110	2,344,216.1307
119	393,091.0197	2,344,228.5511
120	393,091.0197	2,344,237.0043
121	393,066.0197	2,344,237.0043
122	393,066.0197	2,344,234.2221
123	393,052.1110	2,344,221.8018
124	393,047.4653	2,344,222.3287
125	392,995.0325	2,344,103.5713
126	392,983.6336	2,344,114.7711
127	392,980.8302	2,344,111.9178
128	392,992.2585	2,344,100.6892
129	392,987.9290	2,344,094.1359
130	392,975.7482	2,344,064.5926
131	392,970.4493	2,344,057.2531
132	392,968.3674	2,344,055.4592
133	392,948.3189	2,344,052.1575
134	392,891.6419	2,343,971.7739
135	392,899.9421	2,343,934.0644
136	392,929.3631	2,344,005.3501
200	393,040.4243	2,344,014.4887
201	393,032.9356	2,344,007.8615
202	393,036.2492	2,344,004.1172
203	393,051.7411	2,344,017.8270
204	393,054.7967	2,344,022.8763
205	393,051.8135	2,344,024.2530

CURVE LIST		
POINT	RADIUS	DELTA
C1	39.50'	58° 31' 07"
C2	50.50'	88° 54' 43"
C3	19.50'	62° 47' 50"
C4	4.50'	90° 00' 00"
C5	255.50'	41° 58' 15"
C6	12.50'	83° 31' 45"
C7	12.50'	96° 28' 15"
C8	194.50'	38° 59' 22"
C9	20.50'	22° 05' 19"
C10	19.50'	26° 50' 35"
C11	19.50'	62° 47' 50"
C12	50.50'	153° 43' 10"
C13	39.50'	58° 31' 07"



No.	Revision	By	Date
K-96 LAKE ROAD PAVING AND INCIDENTAL DRAINAGE IMPROVEMENTS <b>SITE GEOMETRY PLAN</b> JAMES L. ARMOUR, P.E. - CITY ENGINEER CITY OF WICHITA PROJECT NO. 472-84737 <b>Professional Engineering Consultants, P.A.</b> 303 S. TOPEKA • WICHITA, KANSAS 67202 316-262-2691 • FAX 316-262-3003			
Designed by	BMM	Job No.	35-08160-000
Drawn by	BJS, TAT	Date	March 2008
			Sheet 13 of 29