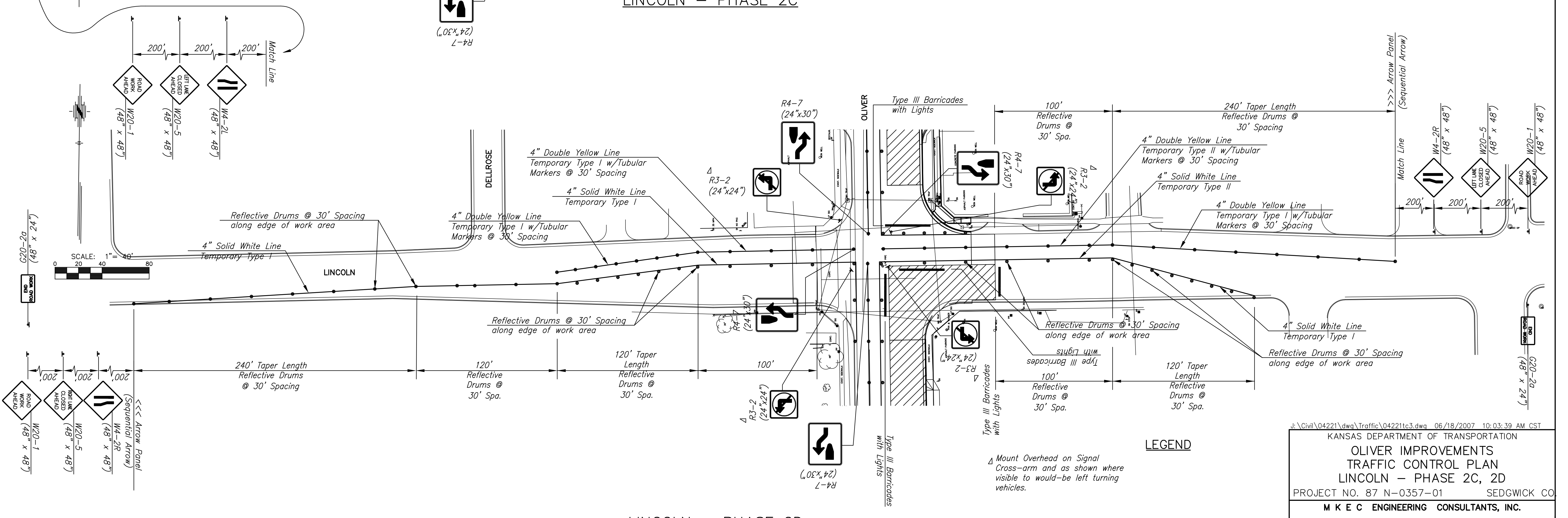
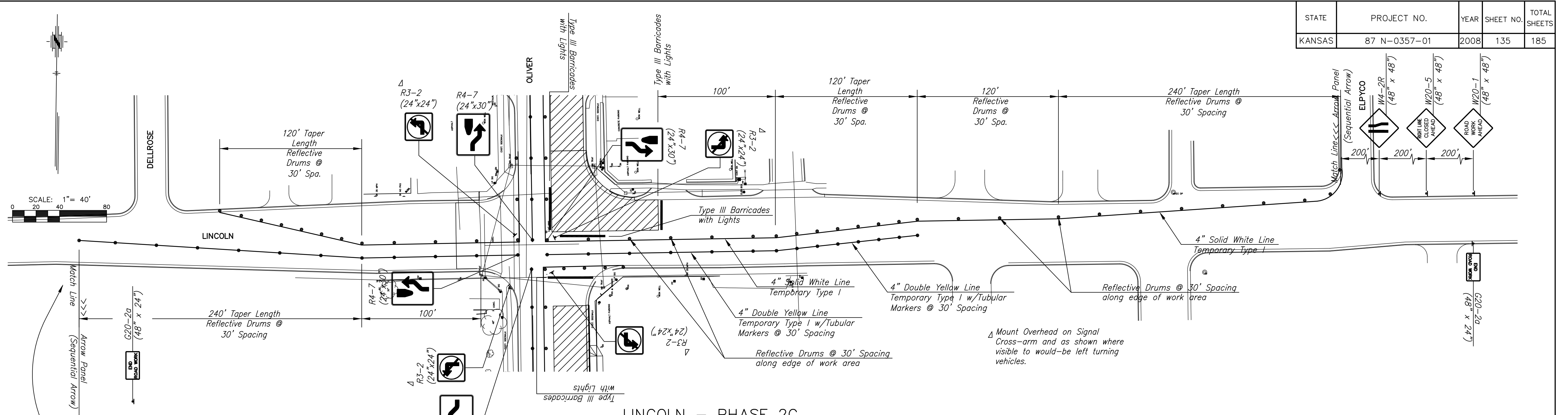


STATE	PROJECT NO.	YEAR	SHEET NO.	TOTAL SHEETS
KANSAS	87 N-0357-01	2008	135	185



LEGEND

△ Mount Overhead on Signal Cross-arm and as shown where visible to would-be left turning vehicles.

J:\Civil\04221\dwg\Traffic\04221tc3.dwg 06/18/2007 10:03:39 AM CST
 KANSAS DEPARTMENT OF TRANSPORTATION
OLIVER IMPROVEMENTS
TRAFFIC CONTROL PLAN
LINCOLN - PHASE 2C, 2D
 PROJECT NO. 87 N-0357-01 SEDGWICK CO
M K E C ENGINEERING CONSULTANTS, INC.
 WICHITA, KANSAS

DESIGNED BY: LAC	CHECKED BY: JRA
DRAWN BY: WJN	DATE: 4/07/05