

BENCHMARK LIST BM 100

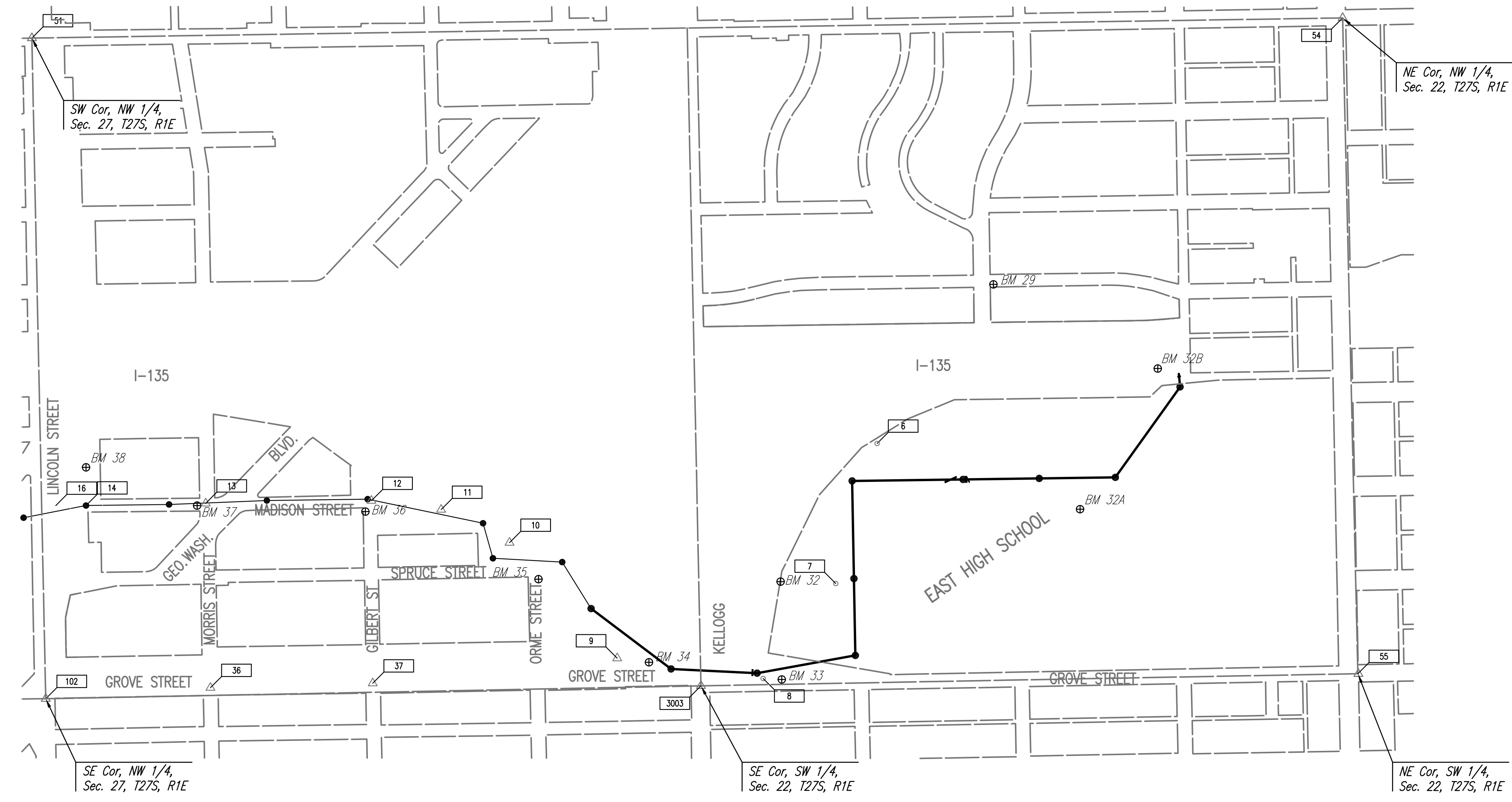
CONTROL POINTS 100

- BM 29 - Chiseled "d" on SW corner curb inlet on E side intersection of Waterman and Minnesota. ELEV.=1293.19
- BM 32 - Chiseled "d" on NW corner water fountains slab located between Baseball fields on S side East High School Sports Fields. ELEV. = 1295.47
- BM 32A - Chiseled "d" in the N side light base, E side parking lot for Football and Track Field, first post south of the NE corner parking lot. ELEV.=1299.60
- BM 32B - Chiseled "d" on the center E face SDA grate under I-135 N bound, 80'± S of Mile Marker 6.4, N side of 3rd set of columns W of East High Soccer Fields. ELEV.=1297.29
- BM 33 - Chiseled "d" on top at N end concrete median of Grove Street 180' N of N face Kellogg Overpass. ELEV. = 1295.83
- BM 34 - COW Bass Disc on E side concrete base of steel power tower on W side Grove Street 100' ± S of Kellogg Overpass. COW Record MSL = 1295.39. ELEV. = 1295.46
- BM 35 - Chiseled "d" on top curb located on the # end of the N curb return Orme Street 40' ± E of the centerline of Spruce Street opposite a Fire Hydrant. ELEV. = 1292.69
- BM 36 - Chiseled "d" on top curb located on the E end of curb on the S side of Gilbert Street 50' E of Madison Street. ELEV. = 1291.22
- BM 37 - Chiseled "d" on top S end curb return at SE corner intersection Morris and Madison Streets. ELEV. = 1290.99
- BM 38 - Chiseled "d" on the NW corner curb inlet located mid-block between Ash and Morris Streets, 150' N of centerline of Lincoln Street. ELEV. = 1290.06

- Pt. No. 6
N: 1,683,886.7675, E: 1,656,294.8203
1/2" Bar near SW corner West football practice field "East High School"
1. 20.8' WSW to chain link fence
2. 27.0' W to E face 30" steel power pole
3. 64.5' NW to SE corner concrete shot put pad
- Pt. No. 7
N: 1,683,719.8440, E: 1,656,860.1061
1/2" Bar 30' South and 2' West of SW corner chain link fence around East High Baseball field
- Pt. No. 8
N: 1,683,426.8115, E: 1,657,243.5974
60d Nail in centerline concrete of median of Grove Ave. 150'± N of N face Kellogg overpass online W chain link fence to West
- Pt. No. 9
N: 1,682,837.6790, E: 1,657,161.5678
Chiseled "+" set on centerline concrete sidewalk @ "T" Intersection on West side of Grove Ave.
200'± S of S face Kellogg overpass
- Pt. No. 10
N: 1,682,403.4170, E: 1,656,694.9833
1/2" Bar on top of berm on southern point of the berm
1. 38.0' NW to wrought iron R/W fence
2. 12.5' SE to 12" mimosa tree
- Pt. No. 11
N: 1,682,127.2474, E: 1,656,561.6433
1/2" Bar 300'± N of Gilbert and Madison Intersection
1. 16.3' W to East face 30" steel power pole
2. 57' S to N face 18" locust tree
- Pt. No. 12
N: 1,681,845.7907, E: 1,656,525.8194
1/2" Bar on N back sidewalk of Gilbert St.
1. 20.8' ENE to center power pole
2. 18' WNW to center of manhole
- Pt. No. 13
N: 1,681,177.0726, E: 1,656,536.5273
Mag Nail @ intersection Madison & Morris St.
1. 36.2' NW to top center fire hydrant
2. 28.7' NE to SW face power pole
- Pt. No. 14
N: 1,680,894.7771, E: 1,656,544.4813
1/2" Bar on North edge sidewalk on centerline of Madison 150' N of Lincoln
1. 56.6' ENE to SW corner house # 842 S Madison
2. 15.30' E to W face power pole
- Pt. No. 16
N: 1,680,572.1678, E: 1,656,545.4630
1/2" Bar on centerline Madison Extended South and on the South Edge Sidewalk North of Lincoln St.
- Pt. No. 36
N: 1,681,196.2226, E: 1,657,280.7209
Mag nail in centerline concrete join Morris Street
1. 8.0' E of E high edge of curb Grove Street
2. 16.9' S of S rim sewer manhole
- Pt. No. 37
N: 1,681,851.1624, E: 1,657,262.7189
60d nail in centerline concrete join Gilbert Street on E high edge curb Grove Street

- Pt. # 51 N: 1,680,475.6203, E: 1,654,658.3194
W 1/4 Cor., Sec. 27, T27S, R1E
Found 3/4" IP in monument box
Center intersection Lincoln and Hydraulic
69.86' SW to chiseled "+" on N side concrete for traffic control
55.76' NW to chiseled "+" on S side of concrete for traffic signal
68.04' NE to COW BM disc on traffic signal pole
76.00' SSE to chiseled "+" on front face curb inlet
- Pt. # 54 N: 1,685,765.1924, E: 1,654,576.9755
W 1/4 Cor., Sec. 22, T27S, R1E
Found 3/4" IP in monument box
Center traveled way Hydraulic at N R/W of Douglas
29.85' E to SE corner brick BLDG.
61.88' NNW to chiseled "+" on top back of curb
35.62' W to chiseled "+" on top concrete base light pole
- Pt. # 55 N: 1,685,826.7596, E: 1,657,224.1584
Center Cor., Sec. 22, T27S, R1E
Found 5/8" bar in monument box
At N R/W of Douglas at N edge of concrete walk
91' E to center traveled way Grove
40' S to center traveled way Douglas
34.60' W to SE corner brick BLDG.
19.83' N to chiseled "+" top curb parking lot entrance
35.15' NE to chiseled "+" top curb parking lot entrance
- Pt. # 3003 N: 1,683,175.7196, E: 1,657,273.1582
SE Cor., Sec. 22, T27S, R1E
Set 1/2" Bar with PEC cap

SECTION CORNERS 100



Saved: 02-03-2009 2:36:00 PM by JAW
 Plot Scale: 1:300 02-03-2009 2:36:12 PM by JAW
 Q:\2007\07600\001\Phase 1\07600-001-C-HVTL

| | | | |
|--|----------|---------|--------------|
| No. | Revision | By | Date |
| RELOCATION OF SANITARY SEWER NO. 23 INTERCEPTOR PHASE 1: ENGLISH/I-135 TO KELLOGG/GROVE HORIZONTAL AND VERTICAL CONTROL JAMES L. ARMOUR, P.E. - CITY ENGINEER CITY OF WICHITA PROJECT NO. 468-84375 Professional Engineering Consultants, P.A. 303 S. TOPEKA • WICHITA, KANSAS 67202 316-262-2691 • FAX 316-262-3003 | | | |
| Designed by | MDK, EJB | Job No. | 35-07600-001 |
| Drawn by | CSL, RJW | Date | AUGUST 2008 |
| | | | Sht. 3 of 19 |