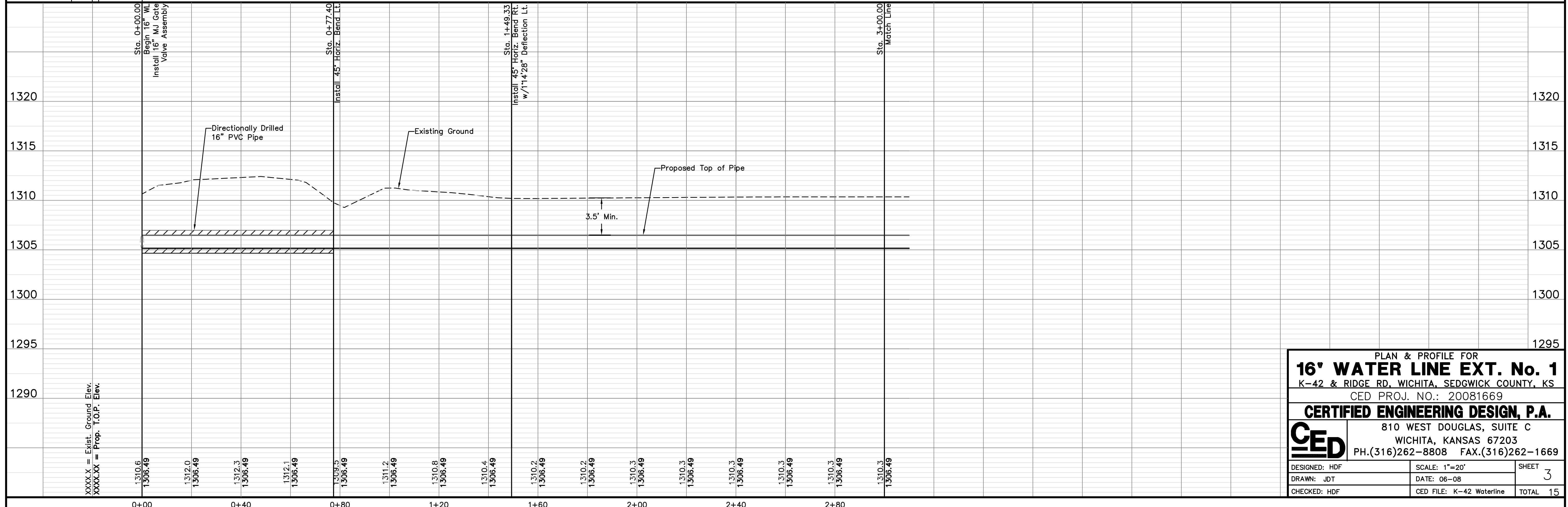


Unless otherwise noted, elevations shown are to top of pipe.



PLAN & PROFILE FOR
16" WATER LINE EXT. No. 1
K-42 & RIDGE RD, WICHITA, SEDGWICK COUNTY, KS
CED PROJ. NO.: 20081669

CERTIFIED ENGINEERING DESIGN, P.A.
810 WEST DOUGLAS, SUITE C
WICHITA, KANSAS 67203
PH.(316)262-8808 FAX.(316)262-1669

DESIGNED: HDF
DRAWN: JD
CHECKED: HDF

SCALE: 1"=20'
DATE: 06-08
CED FILE: K-42 Waterline

SHEET
3
TOTAL 15