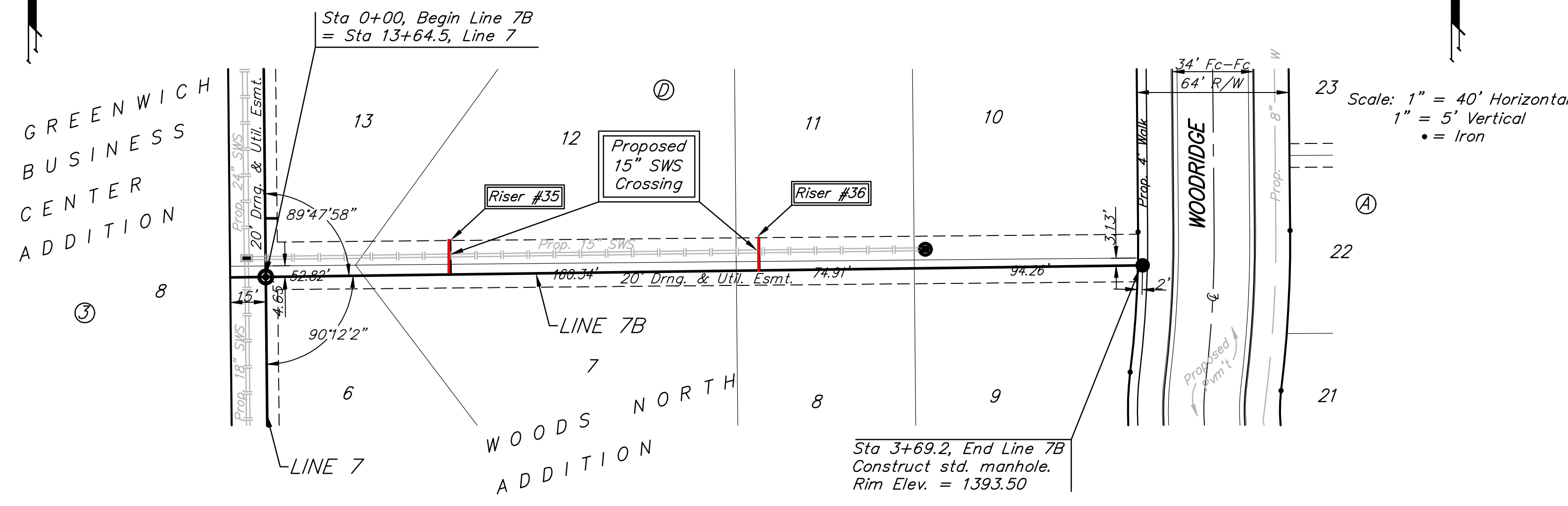
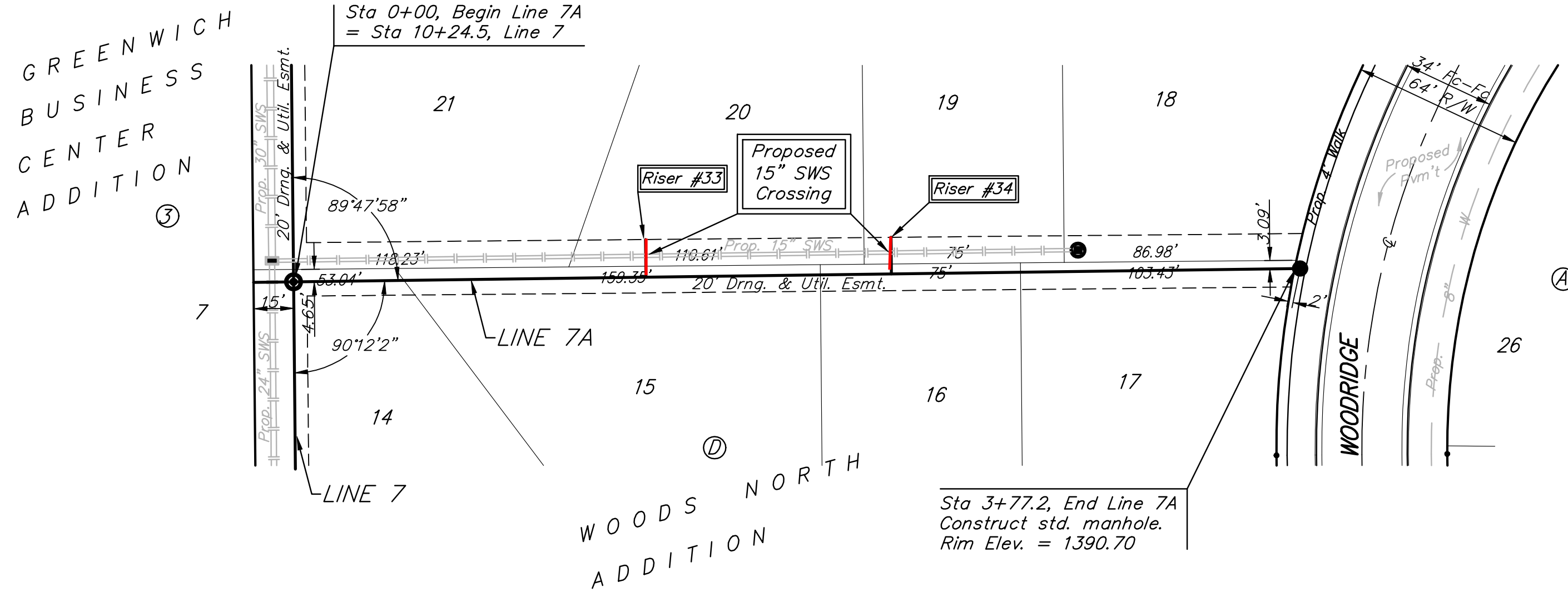


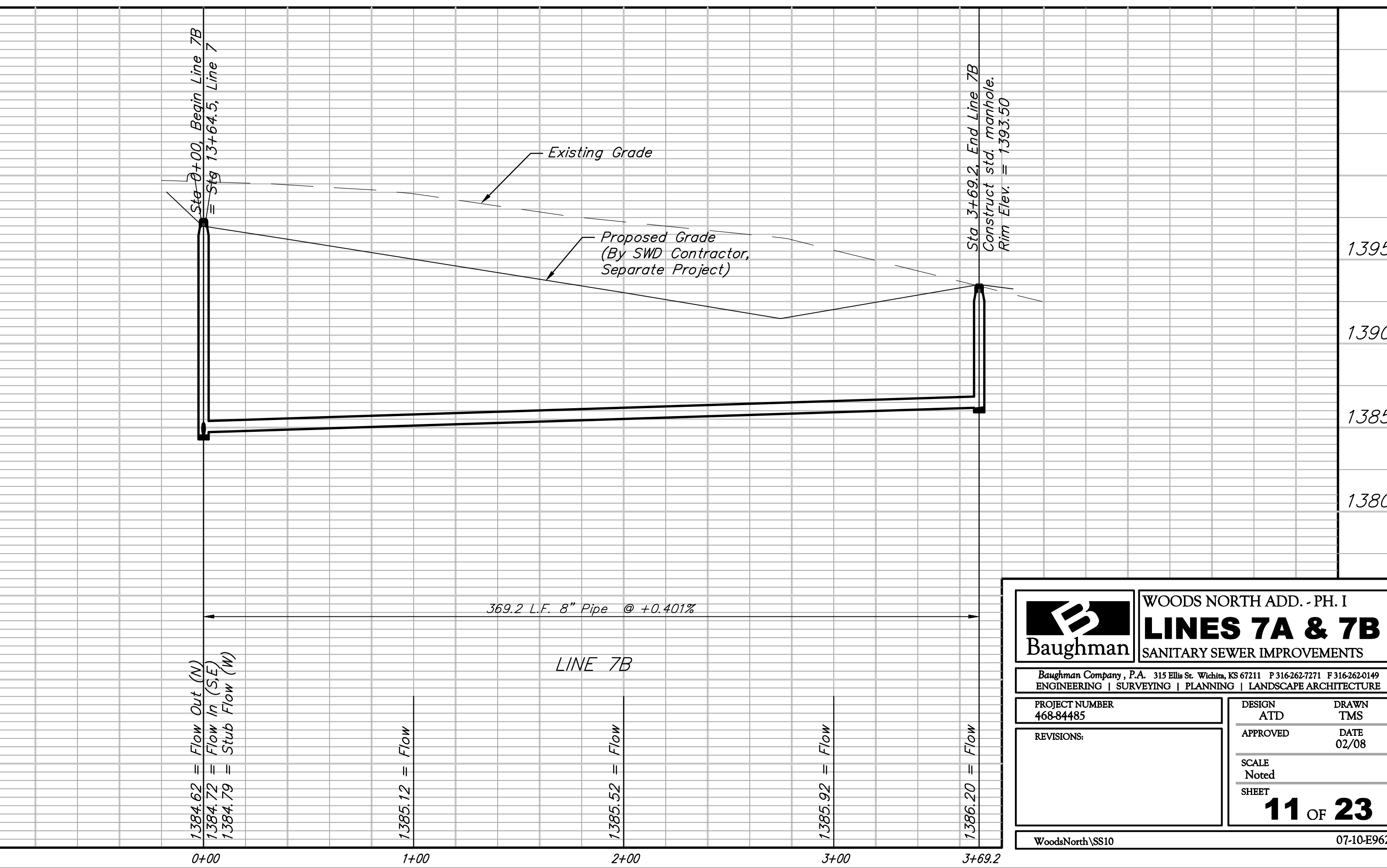
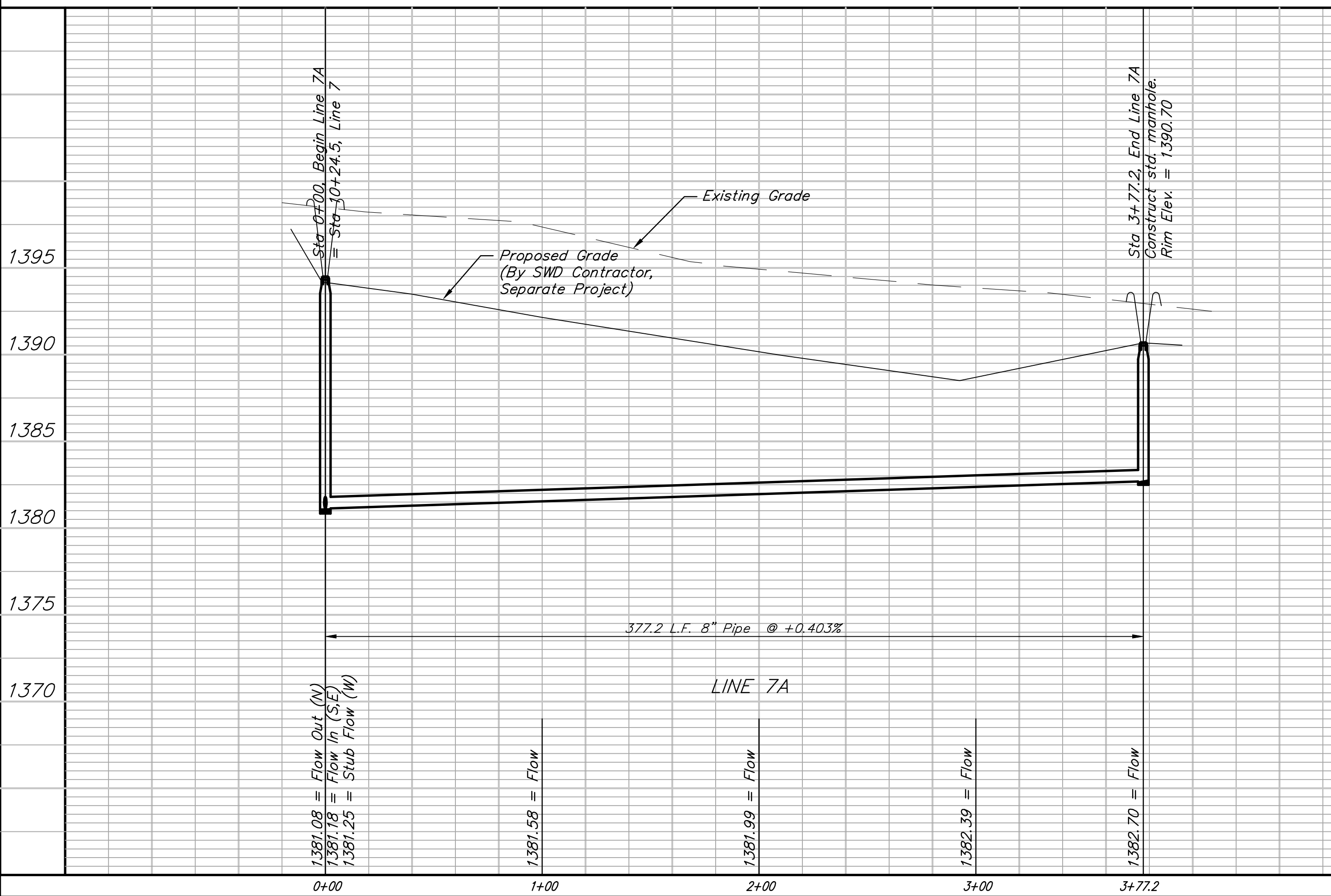
BENCHMARK:
 CROSS CUT ON NORTH
 END OF WEST HEADWALL
 137.5' SOUTH & 12' WEST
 OF THE INTERSECTION OF
 29TH ST N & 127TH ST E.
 ELEV. = 1382.45 NAVD88



SEWER SERVICE TABLE

NUMBER	TYPE	LOCATION				FOR INFORMATION ONLY		DISTANCE FROM	
		LOT NO.	BLOCK NO.	LINE NO.	STATION \ DIRECTION	APPROXIMATE LENGTH 4" PIPE		UPSTREAM MH	DOWNSTREAM MH
						VERTICAL	HORIZONTAL		
33	8" X 4" Tee	20	D	7A	1+32/Lt.	5.0'	14'	245'	132'
34	8" X 4" Tee	19	D	7A	2+24/Lt.	4.0'	14'	153'	224'
35	8" X 4" Tee	12	D	7B	0+78/Lt.	6.5'	14'	291'	78'
36	8" X 4" Tee	11	D	7B	2+08/Lt.	4.0'	14'	161'	208'

NOTE: Vertical Riser Pipe shall be extended to 2' minimum above ground water elevation and 4' maximum below proposed ground elevation.



Baughman **WOODS NORTH ADD. - PH. I**
LINE 7A & 7B
 SANITARY SEWER IMPROVEMENTS

PROJECT NUMBER: 468-84485
 DESIGN: ATD
 DRAWN: TMS
 APPROVED: [Signature]
 DATE: 02/08

SCALE: Noted
 SHEET: **11 OF 23**

WoodsNorth\SS10 07-10-E962