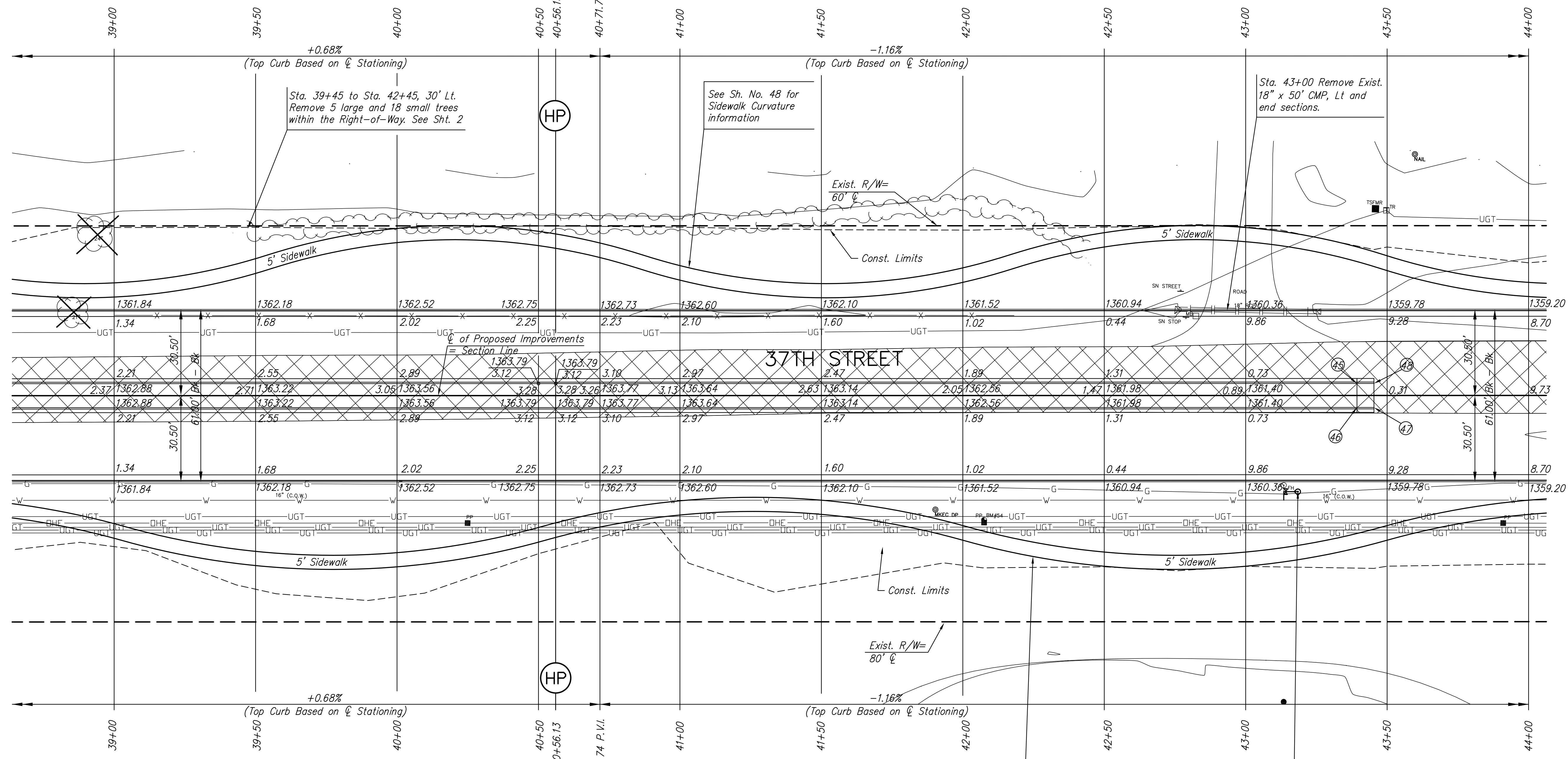


SE 1/4 Sec. 29, T26S, R1W  
WATERCRESS 2nd ADD.  
Reserve B  
Lane & Reed Walker LLC

P.V.I.  
Elev. = 1363.54  
V.C. = 120'

40+56.13  
40+71.74 P.V.I.



U.S.D. #266  
Block A  
MAIZE SCHOOL SOUTH CAMPUS ADD.  
NE 1/4 Sec. 32, T26S, R1W

P.V.I.  
Elev. = 1363.54  
V.C. = 120'

Point No.	Station	Offset to Back	Elevation	
			Flowline	Top Curb
45	43+39.33	4.25' Lt.	1360.28	1360.30
46	43+39.33	4.25' Rt.	1360.28	1360.30
47	43+45.33	4.25' Rt.	1360.21	1360.23
48	43+45.33	4.25' Lt.	1360.21	1360.23

Sta. 43+18.44, 34.00' Rt.,  
Relocate Exist. Fire Hydrant  
Assembly from Sta.  
43+13.44, 31.74' Rt.  
L<sub>1</sub>=3', L<sub>2</sub>=5'  
Valve box elev. 1360.3.  
See Sh. No. 65

**LEGEND**

- Pavement Removal
- 2" Asphalt Milling & Overlay
- Asphalt Pavement Widening
- Brick Pavers
- Construct Wheelchair Ramp See Sh. No. 49

**37TH STREET IMPROVEMENTS  
FROM  
MAIZE ROAD TO TYLER ROAD**

**PLAN SHEET  
STA. 39+00  
TO  
STA. 44+00**  
SHEET TITLE  
472-84693  
PROJECT NUMBER

DESIGN BY  
DRAWN BY  
CHECKED BY

ISSUED  
**March 24, 2009**  
REVISED

SHEET NO.  
**12 of 133**