

**37TH STREET IMPROVEMENTS
FROM
MAIZE ROAD TO TYLER ROAD**

**VALLEY GUTTER
PLAN**

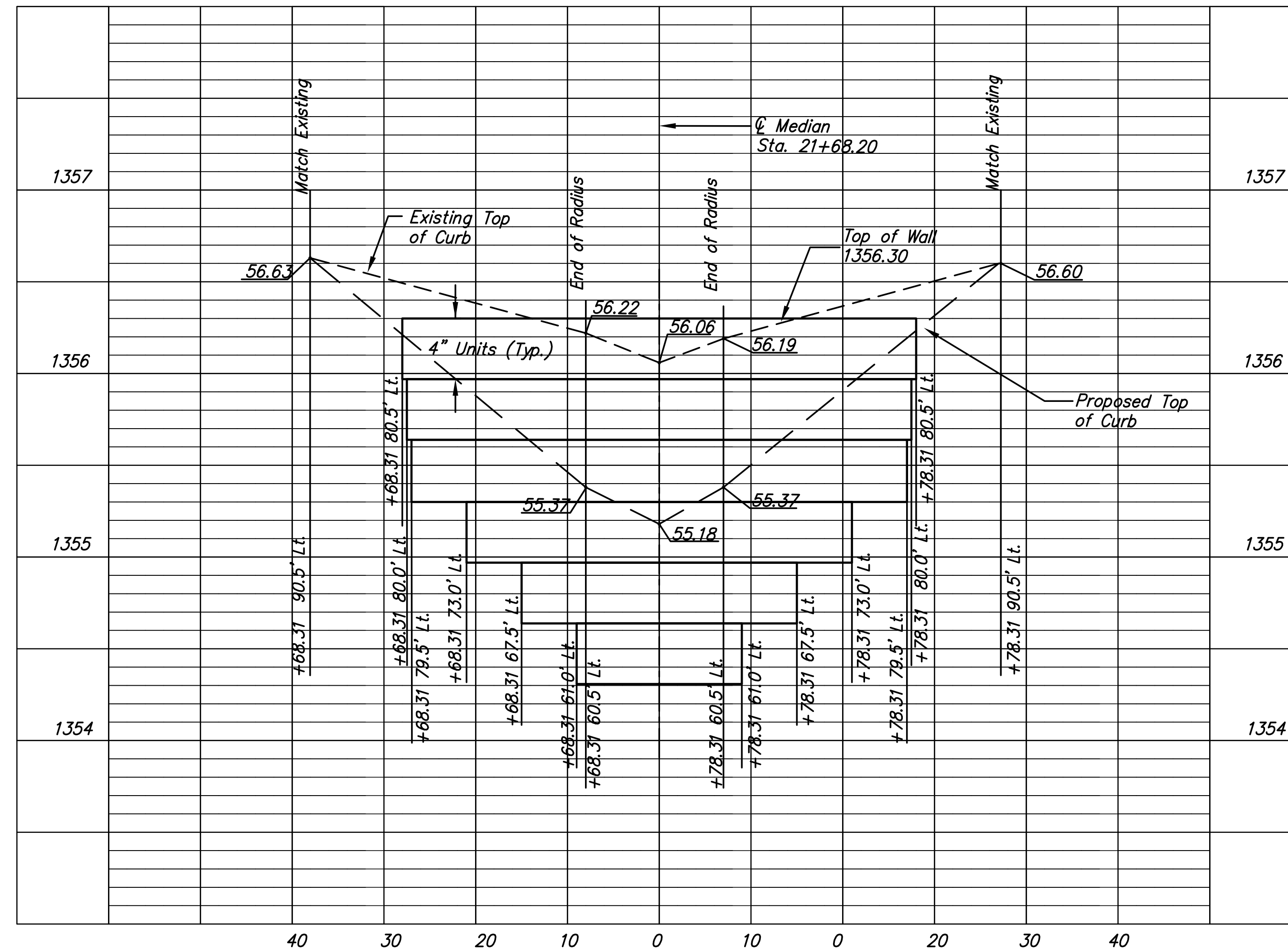
SHEET TITLE
472-84693
PROJECT NUMBER

DESIGN BY
DRAWN BY
CHECKED BY

ISSUED
March 24, 2009
REVISED

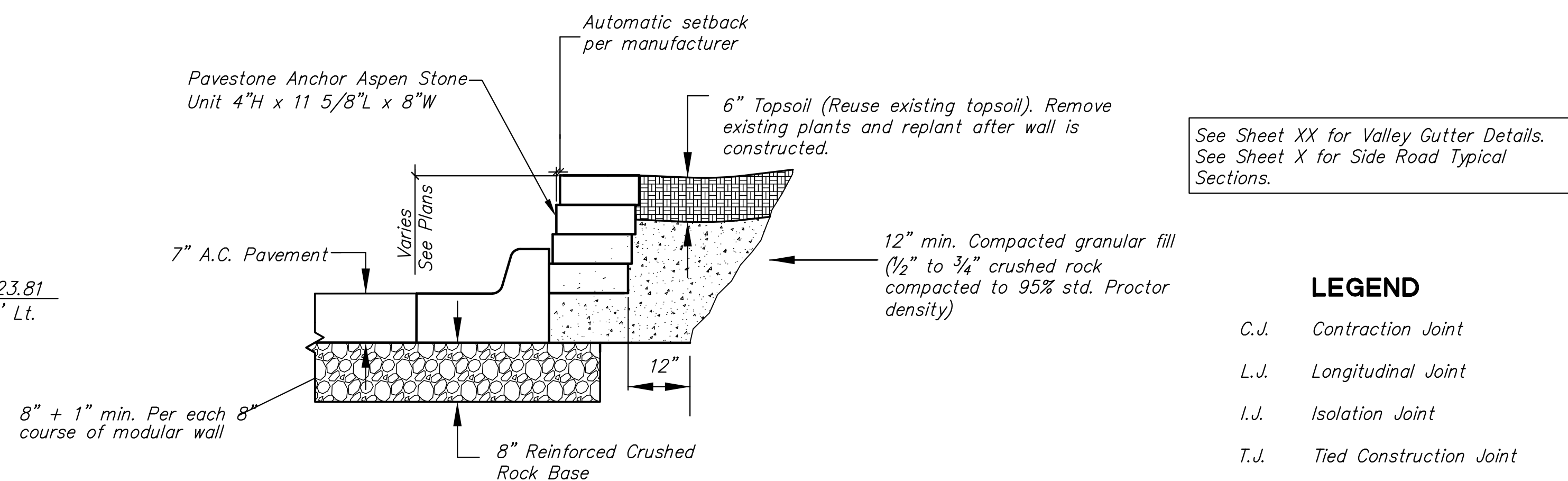
SHEET NO.
44 of 133

J:\Civil\08137\DWG\PAV\08137VGP102



MODULAR CONCRETE RETAINING WALL PROFILE

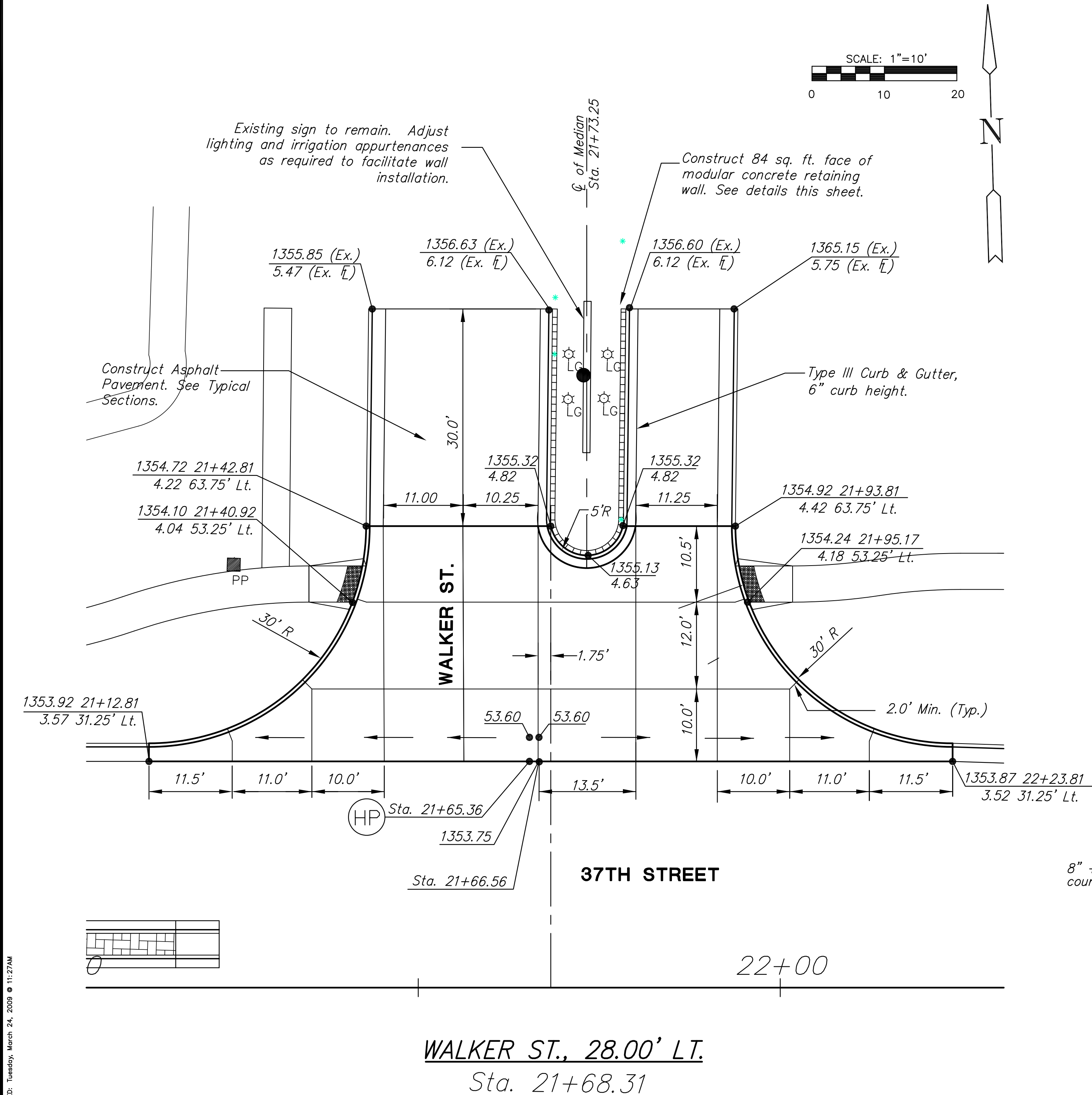
Note: Station Call-outs are to back of curb and gutter immediately in front of wall.



MODULAR CONG. RETAINING WALL

"Retaining Wall" includes compacted granular material, top soil removal and replacement, plant removal and replacement, adjustment to lighting and irrigation appurtenances and pavestone units. Wall units shall be of the model and manufacture shown or approved equal. The color shall be "Brick Red."

- LEGEND**
- C.J. Contraction Joint
 - L.J. Longitudinal Joint
 - I.J. Isolation Joint
 - T.J. Tied Construction Joint
 - D.E.J. Doweled Expansion Joint
 - Valley Gutter Flow Location
 - 100.00 Back of Curb Elevation
 - 00.00 Flow Line Elevation
 - 100.00 Back of Curb Elevation
 - 0.00 High Edge of Curb Elevation



WALKER ST., 28.00' LT.
Sta. 21+68.31

PLOTTED: Tuesday, March 24, 2009 @ 11:27AM