

**SIDEWALK
DETAILS**

SHEET TITLE
472-84693
PROJECT NUMBER

DESIGN BY
DRAWN BY
CHECKED BY

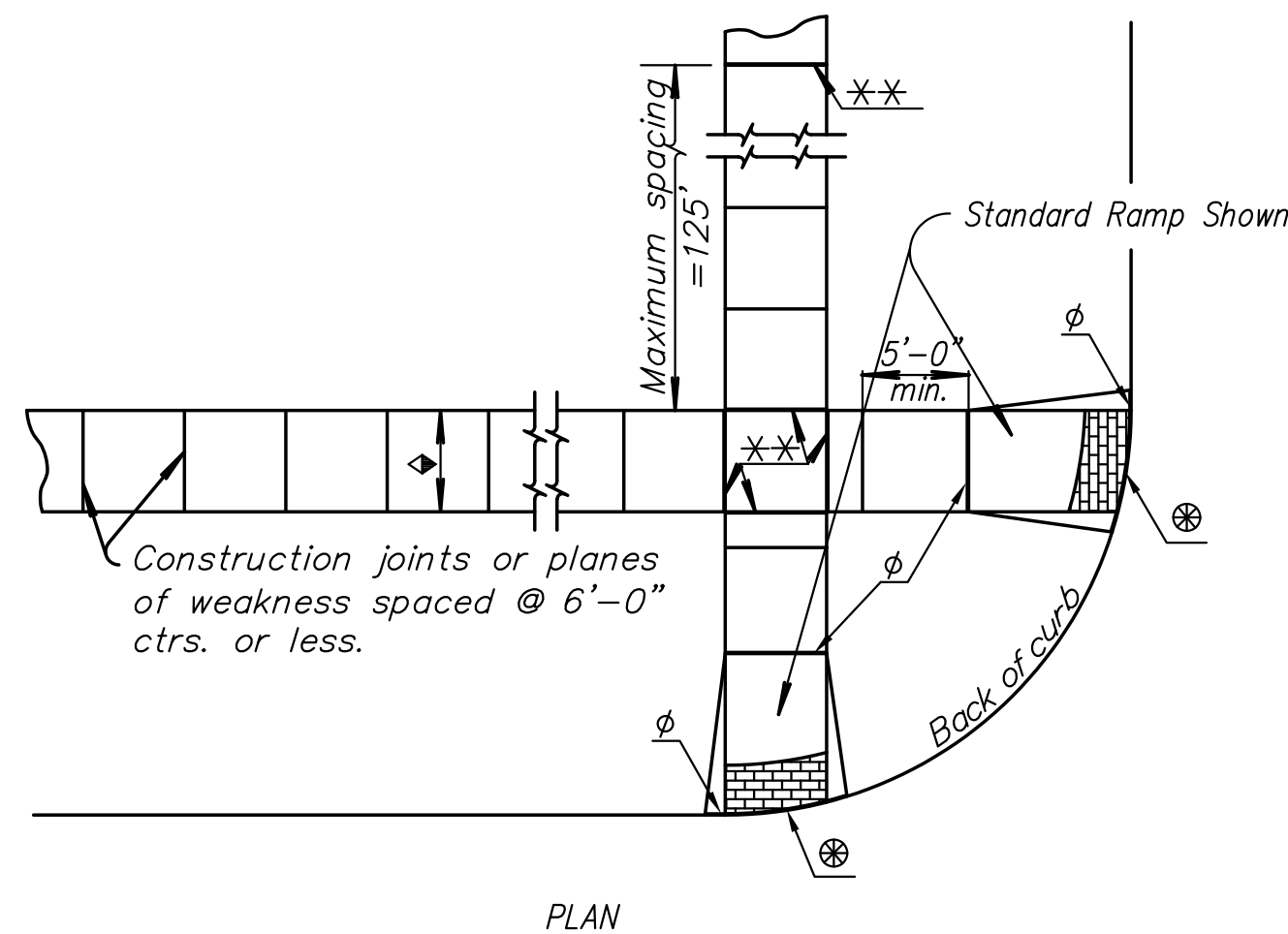
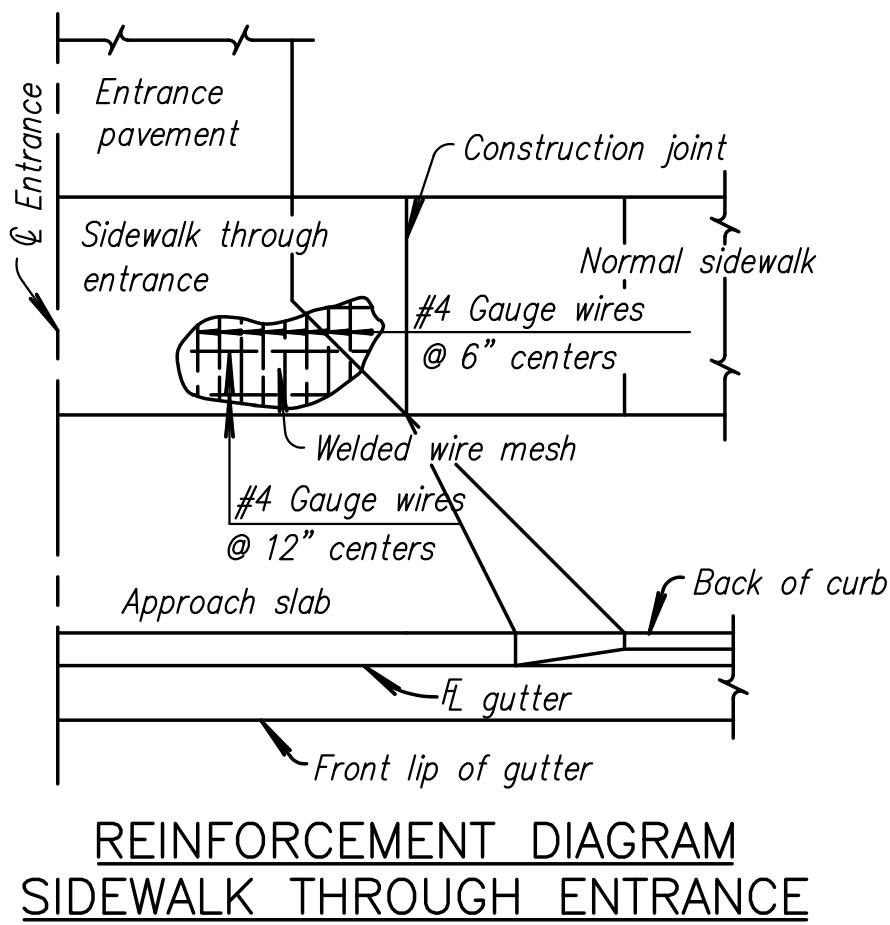
ISSUED
March 24, 2009

REVISED

SHEET NO.
48 of 133

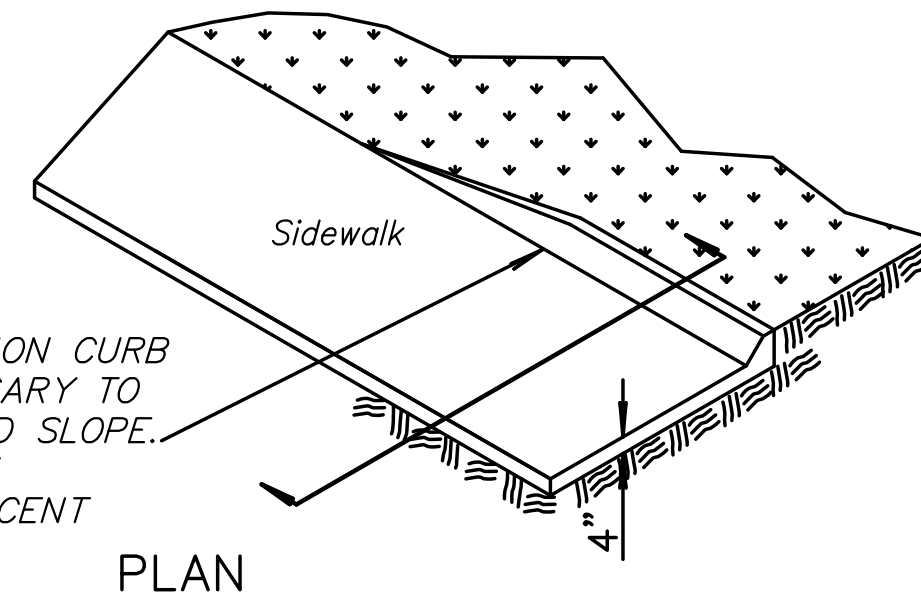
NOTES:

Curb cut ramps are to be located as shown on the plans or as directed by the Engineer.
The normal gutter line profile shall be maintained through the area of the ramp.
If possible, drainage structures should not be placed in line with ramps. Except where existing drainage structures are being utilized in the new construction, location of the ramp should take precedence over location of drainage structure.
Sidewalks shall be ramped where the driveway curb is extended across the walk.
Care shall be taken to assure a uniform grade on the ramp, free of sags and short grade changes.
Expansion joints shall be placed in sidewalks as follows: In long runs, expansion joints shall be 3/4" redwood boards flush with the surface, at a maximum spacing of 125'. This same joint should be used at sidewalk junctions as shown in Typical Plan.
Where the end of the sidewalk abuts a curb, a 3/4" redwood board flush with the surface shall be used.
Where the sidewalk is parallel and adjacent to a rigid structure, a 1/2" pre-molded joint filler (Non-extruding, Type B) shall be used.
Sidewalk shall slope toward the street at a maximum of 1:50, and where necessary, may be de-pressed or sloped to fit alleys and entrances as shown on the plans or as directed by the Engineer.
Where clear width of sidewalk between top of ramp and building or other obstruction is less than 48 inches, the slope of the flared sides shall not exceed 1:12.
Where sidewalk is shown to be constructed back of an entrance or alley it shall be 8" thick with welded wire mesh reinforcement of the same gauge and spacing of wires as in entrance pavement, as shown in the Reinforcement Diagram. If the driveway is not reinforced, the sidewalk will not require reinforcement. Work shall be paid for as Driveway or Alley Construction.



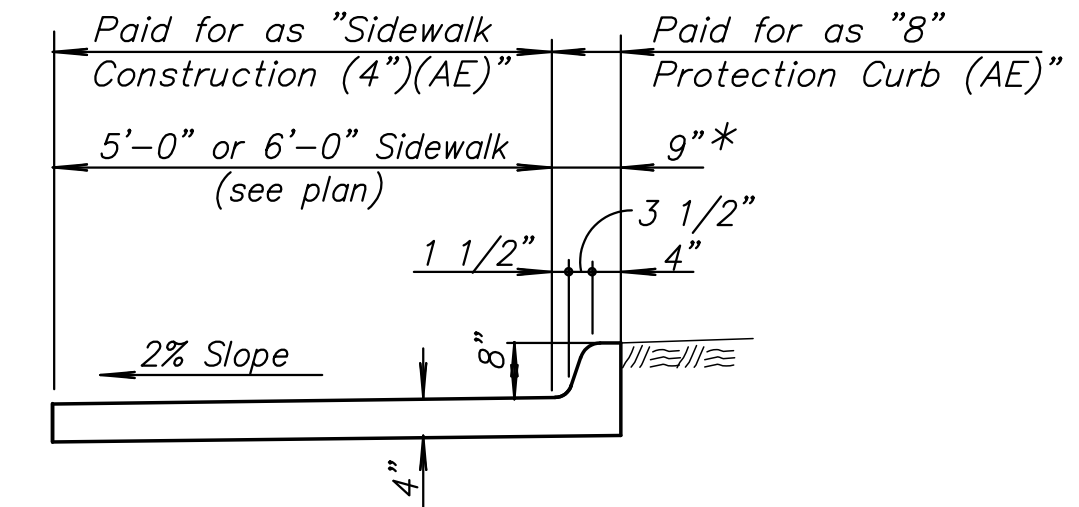
NOTE:

- Sidewalk shall always have a cross-slope of 1/4 inch per foot or less, even through driveways unless directed otherwise by the Engineer.
- ** Expansion joint (3/4" redwood board) located as shown.
- Variable width (5'-0" min.) Entrance walk to be same width as approach walk. Sidewalk width of 4'-0" may be used where existing conditions prohibit use of 5'-0".
- Expansion Joint (3/4" Redwood board) placed at either back of curb line or at sidewalk line.
- Detectable warning installation is typical and required on Sidewalk Ramps. Refer to Ramp Detail sheet.



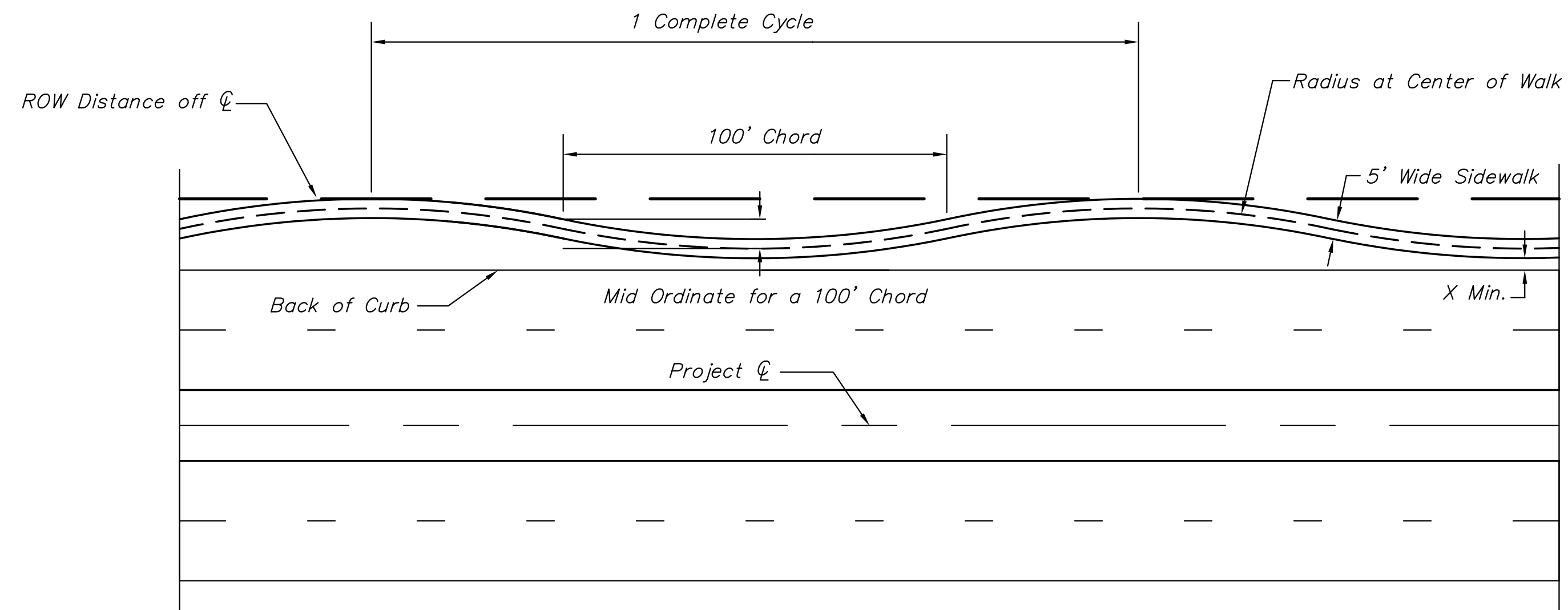
8" PROTECTION CURB

- Note:
1. 8" Protection Curb shall be constructed at locations shown on plans.
 2. Protection curb shall be constructed monolithically with sidewalk.



SECTION (8" Curb)

* Transition as shown at ends



CURVILINEAR SIDEWALK SCHEDULE								
START STA.	END STA.	SIDE	CYCLE LENGTH	RADIUS	Δ	ROW DISTANCE OFF C	X	MID-ORDINATE
24+90.00	48+70.00	Rt.	297.50'	274.96'	15.69359°	60.0'	4'	4.58'
49+20.00	55+51.25	Rt.	252.50'	199.50'	18.44595°	60.0'	4'	6.37'
55+51.25	59+30.00	Rt.	252.50'	278.44'	13.10360°	54.0'Δ	4'	4.53'
22+30.00	23+60.00	Lt.	260.00'	211.22'	17.92262°	60.0'	4'	6.00'
23+60.00	28+40.00	Lt.	192.00'	222.05'	12.48383°	50.0'	4'	5.70'
29+60.00	32+60.00	Lt.	200.00'	240.72'	11.98819°	50.0'	4'	5.25'
33+65.00	45+45.00	Lt.	262.22'	214.76'	17.77332°	60.0'	4'	5.90'
46+15.00	50+35.00	Lt.	210.00'	139.58'	22.09470°	60.0'	4'	9.26'
50+65.00	54+65.00	Lt.	200.00'	127.08'	23.17025°	60.0'	4'	10.25'
56+50.00	57+65.00	Lt.	230.00'	166.41'	20.21485°	60.0'	4'	7.69'
57+65.00	61+10.00	Lt.	230.00'	317.51'	10.43378°	50.0'	4'	3.96'

Δ Back of walk, not actual R.O.W. distance