

STATE	PROJECT NO.	YEAR	SHEET NO.	SHEETS
KANSAS	87 N-0349-01	2009	58	133

MKEC
ENGINEERING
CONSULTANTS, INC.

411 N. WEBB ROAD
WICHITA, KS. 67206
316-684-9600

Const. 12.4 S.Y. of
Permanent Pavement Patch
See Sh. No. 41

Sta. 15+18.28, Line 5
@ Sta. 81+33.18, 18.00' Rt.
1-8"x8" DIMJ Tee
1-8" Valve Assy. (S)
(MJ Gate Valve)
1-8" Anch. Valve Assy. (E)
(MJ Gate Valve)
5.00' of 8" DI CL Pipe (E)
1-2" Blowoff Assy. (E)
Valve Boxes Elev.=199.66

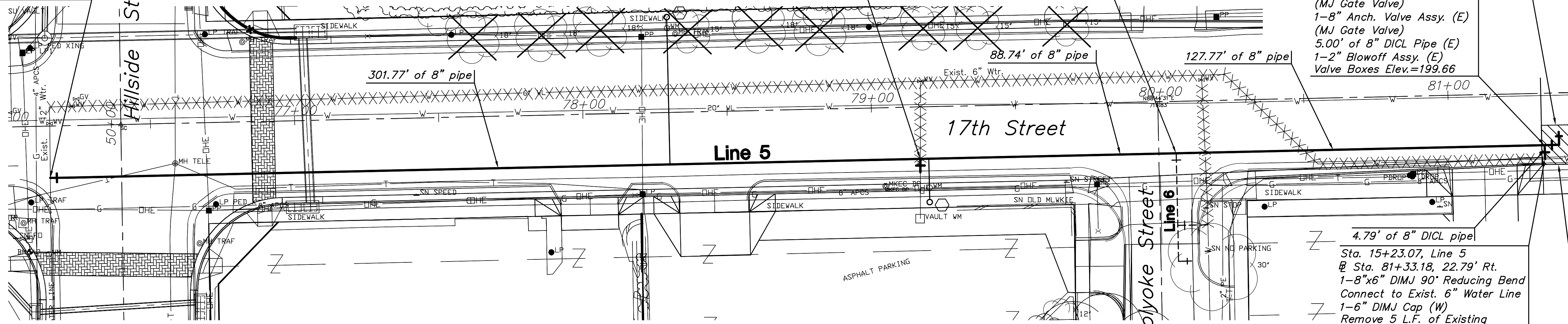
4.79' of 8" DI CL pipe
Sta. 15+23.07, Line 5
@ Sta. 81+33.18, 22.79' Rt.
1-8"x6" DIMJ 90° Reducing Bend
Connect to Exist. 6" Water Line
1-6" DIMJ Cap (W)
Remove 5 L.F. of Existing
6" (W). Cap exposed end.

Remove & Replace 10
L.F. of Curb & Gutter

Sta. 10+00.00, Line 5
@ Sta. 76+14.89, 17.94' Rt.
1-12"x8" Tapping Sleeve
and Valve to be furnished and
Installed by C.O.W. Water Dept.
Valve Box Elev.=177.57

Sta. 13+01.77, Line 5=
@ Sta. 79+16.67, 18.00' Rt.
1-8"x8" DIMJ Tee (S)
1-8" Valve Assy. (S)
(MJ Gate Valve)
Connect to Exist. 8" Water Line
1-8" DIMJ Cap (W)
Remove 5 L.F. of Existing
8" (N). Cap exposed end.
Valve Box Elev.=191.47

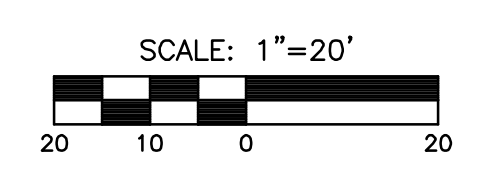
Sta. 13+90.51, Line 5=
Sta. 10+00.00, Line 5=
@ Sta. 80+05.43, 18.00' Rt.
1-8"x8" DIMJ Tee (S)
1-8" Valve Assy. (S)
(MJ Gate Valve)
Valve Box Elev.=195.49



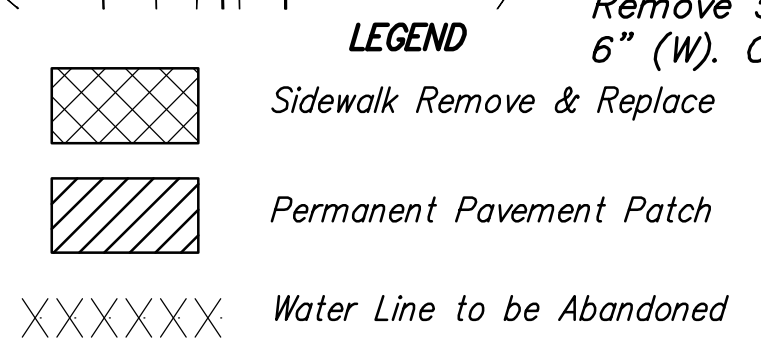
PLAN LINE 5

NOTES:

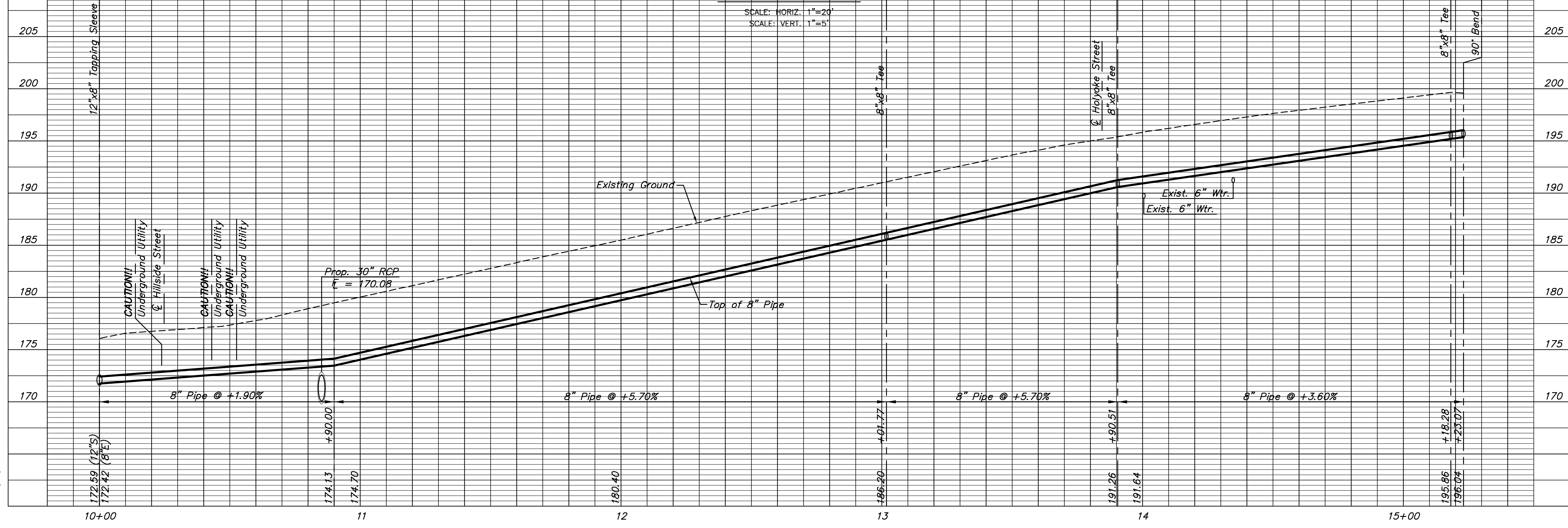
- Contractor to verify depth and location of existing utilities prior to construction.
- All trenches to be sand flushed and vibrated.



- Install new 1" service and connect to new 8" water main. Setter to be connected to existing customer's water service. The Contractor shall coordinate this work. 1-Long Service 1-Short Service



PROFILE LINE 5



**17th STREET
FROM GROVE TO HILLSIDE**

Water Line 5
SHEET TITLE
87 N-0349-01
PROJECT NUMBER

DESIGN BY: **DMU**
DRAWN BY: **JWC**
CHECKED BY: **JRA**

ISSUED: **May 28, 2009**
REVISED:

SHEET NO.
58 of 133

PLOT: Thursday, May 28, 2009 10:44 AM

J:\CIVIL\04179\DWG\WATER\04179C03.DWG