

SE 1/4, SEC. 29, T 26 S, R 1 E

WET WELL 9+63.94
 STA. 9+65.36-LINE 1
 N 17704.1883
 E 20695.8391
 CONSTRUCT WET WELL AT
 LIFT STATION
 SEE SHEET NOS. 13-16

MH 1 - 1 9+76.44
 STA. 10+01.75-LINE 1
 N 17740.5804
 E 20695.8442
 CONSTRUCT STD TYPE P MH
 TOP = 1322.72

STA. 16+51-LINE 1
 REMOVE AND REPLACE
 28" x 18" RCP
 FL = 1319.49 (N)
 FL = 1319.50 (S)

MH 1 - 2
 STA. 16+71.70-LINE 1
 N 18408.7522
 E 20650.7933
 CONSTRUCT SPECIAL
 INSIDE DROP MANHOLE
 TYPE P (5' DIA.)
 TOP = 1320.25' 50
 8" STUB (SW)

MH 1 - 3
 STA. 18+57.10-LINE 1
 N 18593.9540
 E 20659.3913
 CONSTRUCT STD TYPE P MH
 TOP = 1320.27' 42

CAUTION!
 STA. 18+08.60-LINE 1
 CONOCO PHILLIPS PIPELINE
 CALL 1-800-766-8230
 ALSO CALL MR. ANDRES MARTINEZ
 AT 316-838-3411 EXT. 21
 24 HOURS PRIOR TO DIGGING

CAUTION!
 STA. 18+15.70-LINE 1
 ENBRIDGE PIPELINE
 CALL 1-800-467-2751
 ALSO CALL MR. SCOTT HEARN
 AT 316-832-1814
 24 HOURS PRIOR TO DIGGING

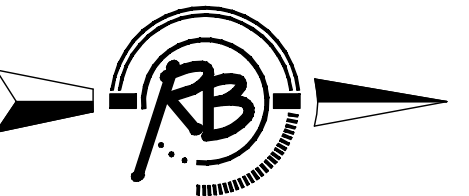
DALE AVE.

DALE AVE.

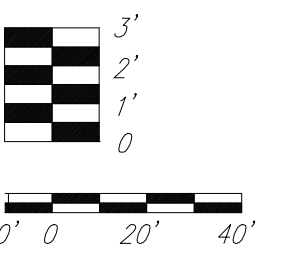
WEST BRANCH OF
 CHISHOLM CREEK
 DIVERSION

SUBURBAN
 ACRES

REMOVE AND REPLACE SIGNAGE

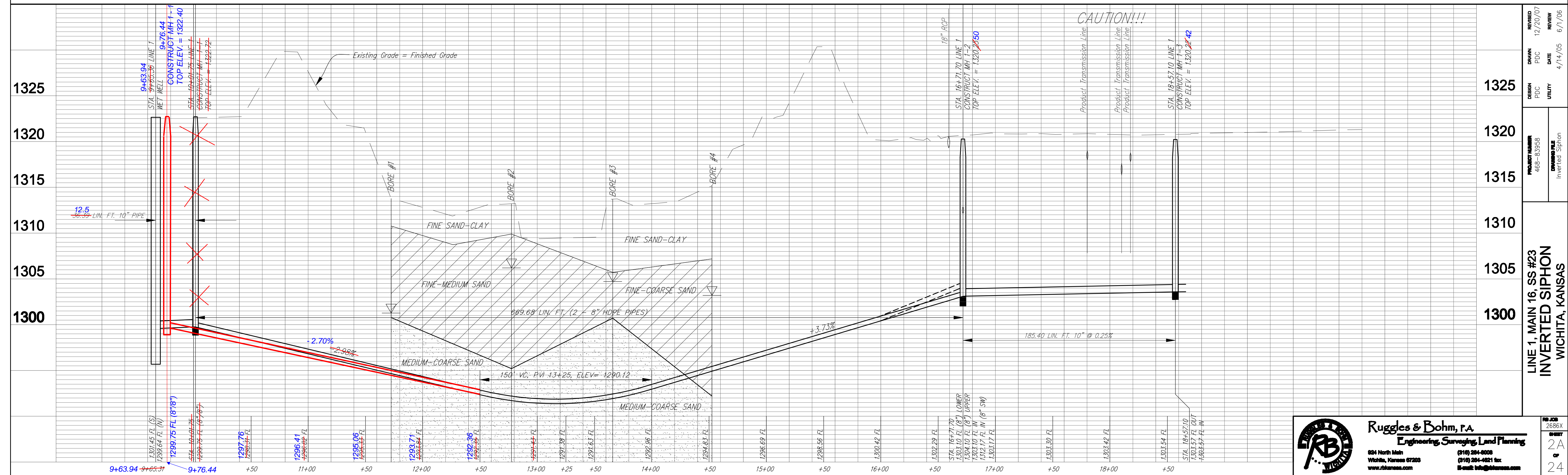


Scale 1" = 40' (Horiz.)
 1" = 5' (Vert.)



NOTE: SOIL CLASSIFICATIONS SHOWN IN PROFILE
 BELOW ARE APPROXIMATE REPRESENTATIONS
 OF SOIL BORINGS DEPICTED ON SHEET 2B.

REVISED: 5-22-08



| | | | |
|---|-----------|--------------|-----------------|
| REVISION | 12/20/07 | REVIEW | 6/1/06 |
| DESIGN | PDC | DATE | 4/14/05 |
| DRAWN | PDC | UTILITY | |
| PROJECT NUMBER | 468-83958 | DRAWING FILE | Inverted Siphon |
| LINE 1, MAIN 16, SS #23 INVERTED SIPHON WICHITA, KANSAS | | | |
| NO. JOB | 2680X | | |
| DATE | 08 | | |
| SCALE | 2A | | |
| | 24 | | |

Ruggles & Bohm, P.A.
 Engineering, Surveying, Land Planning
 824 North Main
 Wichita, Kansas 67203
 www.rtkansas.com
 (316) 264-0000
 (316) 264-4821 fax
 E-mail: info@rtkansas.com