

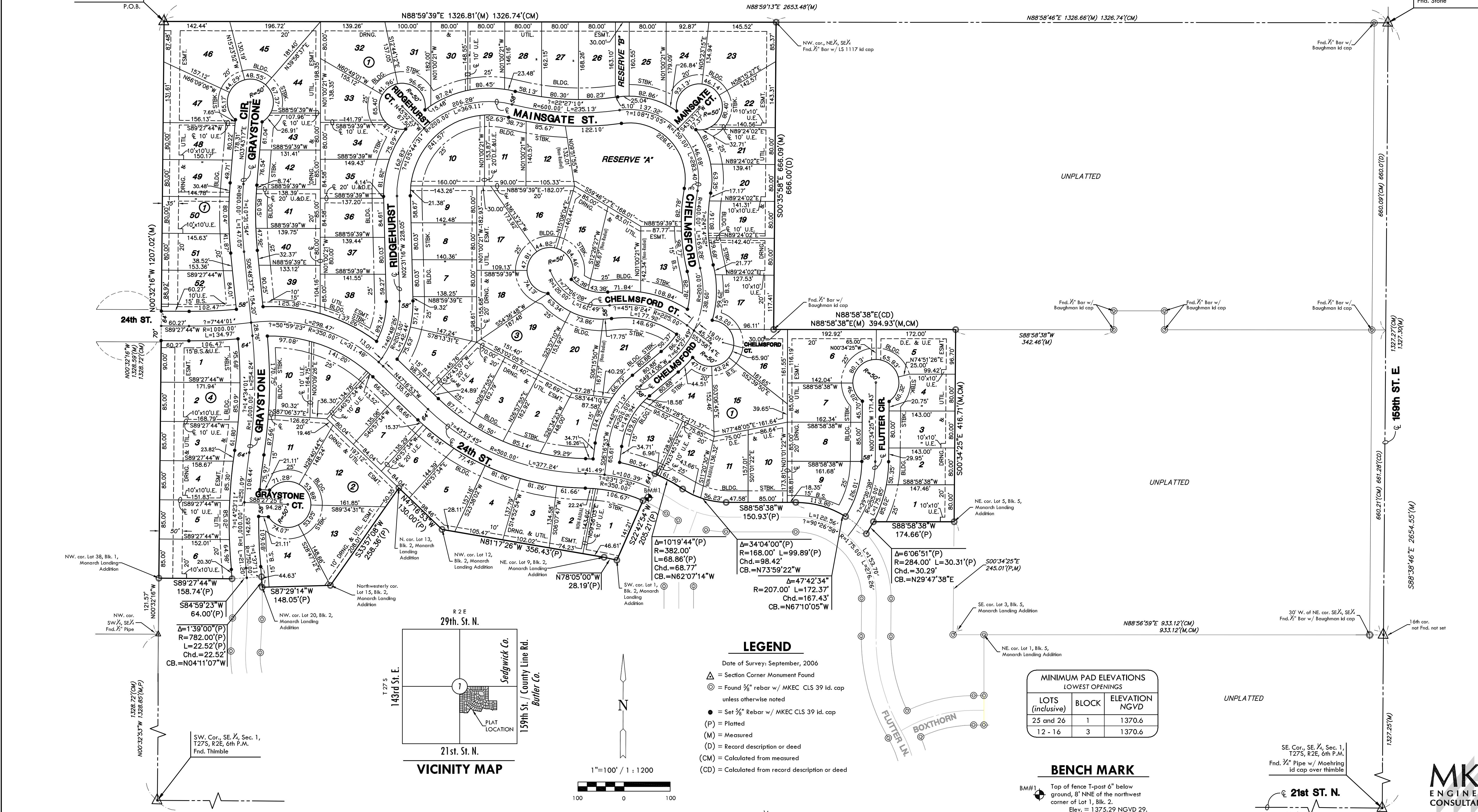
# FINAL PLAT

## MONARCH LANDING SECOND ADDITION

### AN ADDITION TO WICHITA, SEDGWICK COUNTY, KANSAS

NW. cor., SE 1/4, Sec. 1,  
T27S, R2E, 6th P.M.  
Fnd. 1/2" pipe  
P.O.B.

NE. Cor., SE 1/4, Sec. 1,  
T27S, R2E, 6th P.M.  
Fnd. Stone



UNPLATTED

UNPLATTED

UNPLATTED

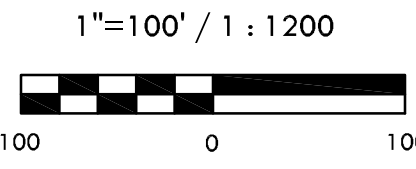
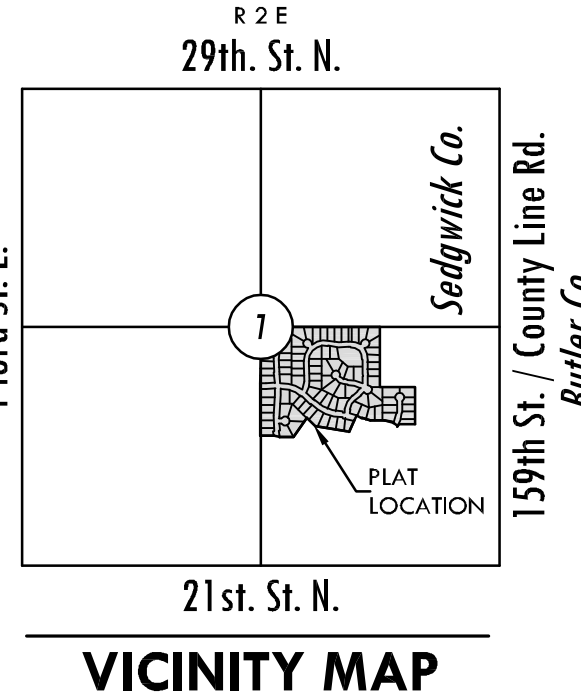
#### LEGEND

- Date of Survey: September, 2006
- △ = Section Corner Monument Found
  - ⊙ = Found 3/8" rebar w/ MKEC CLS 39 id. cap unless otherwise noted
  - = Set 3/8" Rebar w/ MKEC CLS 39 id. cap
  - (P) = Platted
  - (M) = Measured
  - (D) = Record description or deed
  - (CM) = Calculated from measured
  - (CD) = Calculated from record description or deed

MINIMUM PAD ELEVATIONS LOWEST OPENINGS		
LOTS (inclusive)	BLOCK	ELEVATION NGVD
25 and 26	1	1370.6
12 - 16	3	1370.6

#### BENCH MARK

BM#1  
Top of fence T-post 6" below ground, 8' NNE of the northwest corner of Lot 1, Blk. 2.  
Elev. = 1375.29 NGVD 29.



Basis of Bearings: Kansas coordinate system 1983 south zone bearing of S88°55'31"W along the S. Line of SE 1/4, Sec. 1, T27S, R2E, 6th P.M.

**MKEC**  
ENGINEERING  
CONSULTANTS, INC.

411 N. WEBB ROAD  
WICHITA, KS. 67206  
316-684-9600