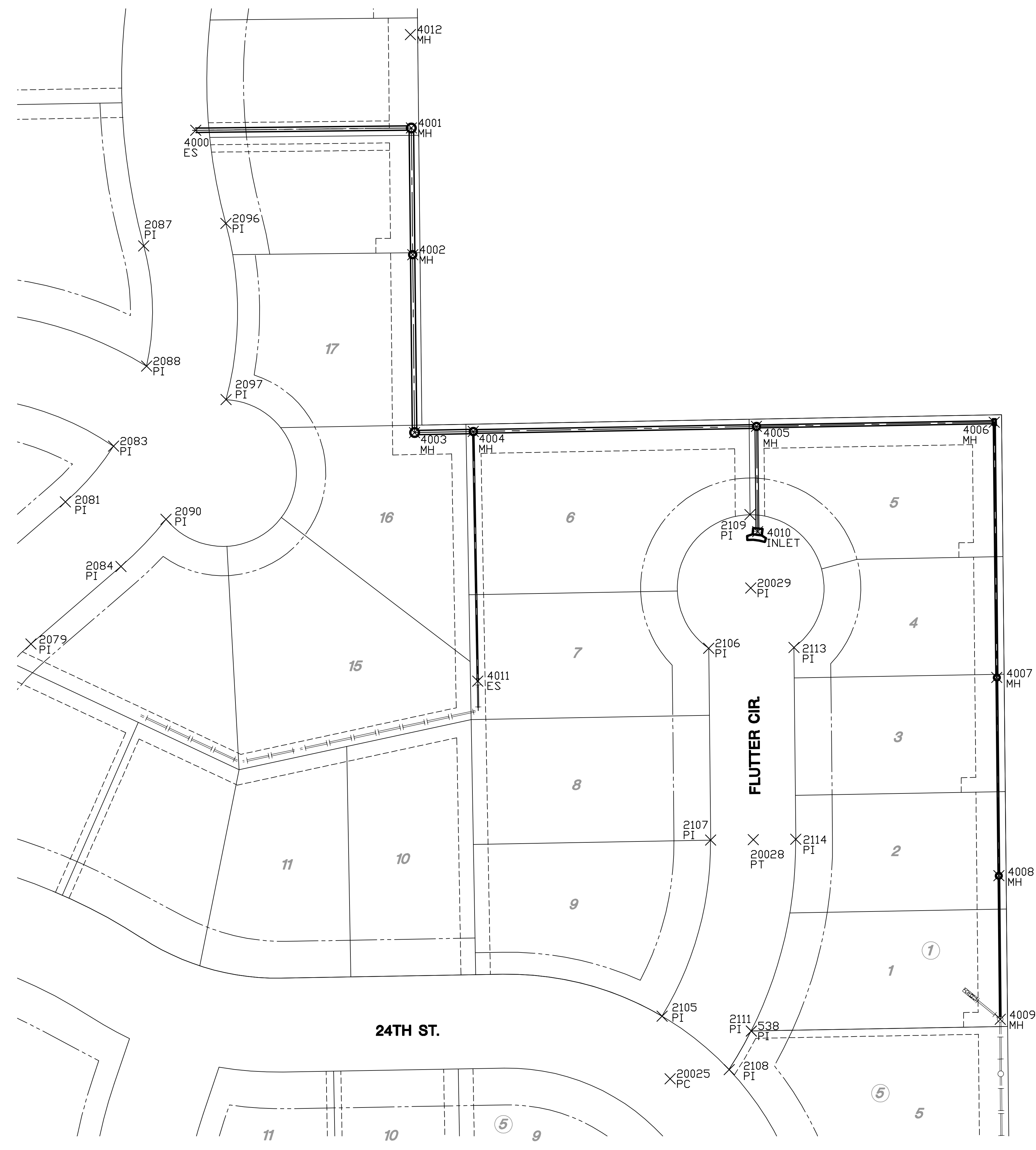


**PAVING & INCIDENTAL DRAINAGE PLANS  
MONARCH LANDING SECOND ADDITION  
PHASE 2 PART A**



PLAT IRONS

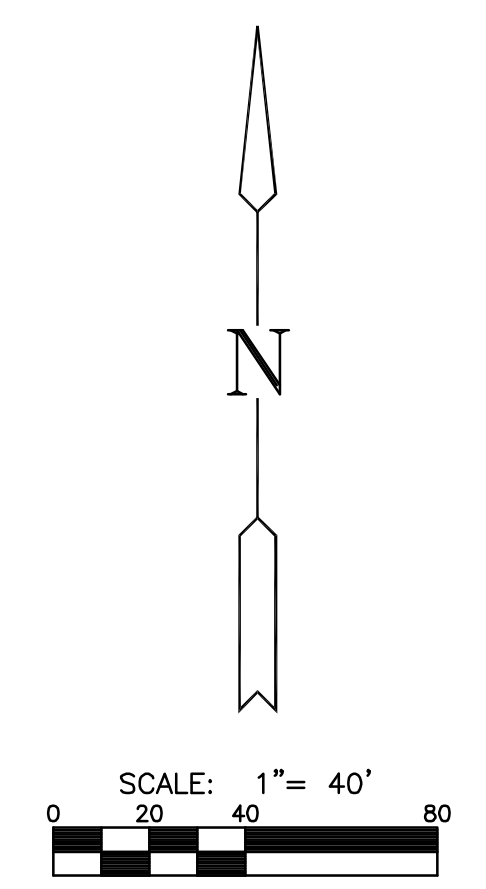
Point #	Northing	Easting	Desc.
2103	1701680.98	1700830.90	PI
2105	1701652.41	1700939.98	PI
2106	1701903.02	1700971.31	PI
2107	1701772.33	1700972.61	PI
2108	1701616.01	1700985.21	PI
2109	1701994.04	1700999.40	PI
2111	1701642.30	1701000.26	PI
2113	1701903.60	1701029.30	PI
2114	1701772.91	1701030.61	PI

PAVING POINTS

Point #	Northing	Easting	Desc.
20025	1701609.81	1700944.97	PC
20028	1701772.62	1701001.61	PT
20029	1701944.04	1700989.90	PI

STORM SEWER POINTS

Point #	Northing	Easting	Desc.
4000	1702255.96	1700621.90	ES
4001	1702257.40	1700768.74	MH
4002	1702171.09	1700769.64	MH
4003	1702049.94	1700770.91	MH
4004	1702050.65	1700810.94	MH
4005	1702054.11	1701003.79	MH
4006	1702057.02	1701165.77	MH
4007	1701883.11	1701167.51	MH
4008	1701748.11	1701168.87	MH
4009	1701650.33	1701169.84	MH
4010	1701982.43	1701004.51	INLET
4011	1701880.60	1700813.98	ES
4012	1702321.08	1700768.07	MH



PLOTTED: Wednesday, July 01, 2009 @ 01:40PM

**BUBBLE MAP**  
SHEET TITLE  
472-84613  
PROJECT NUMBER

DFL  
DESIGN BY  
JWC  
DRAWN BY  
GJA  
CHECKED BY

ISSUED  
June 2009  
REVISED

SHEET NO.  
16 of 24

J:\CIVIL\06207\07185\PAV\PHASE 2\PHASE2A\BUBBLE.DWG