

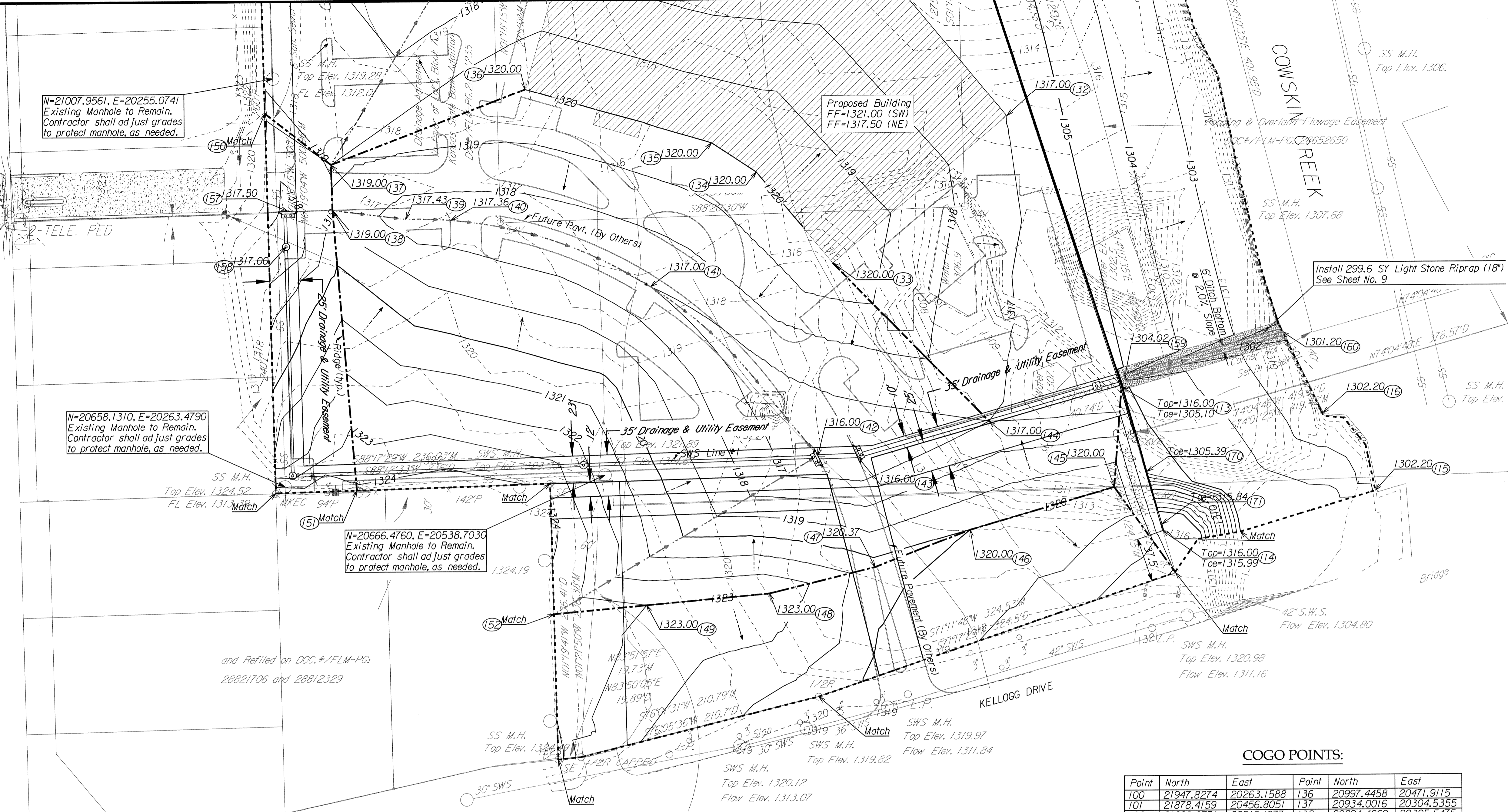
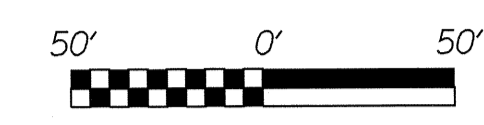
N=21007.9561, E=20255.0741
Existing Manhole to Remain.
Contractor shall adjust grades
to protect manhole, as needed.

N=20658.1310, E=20263.4790
Existing Manhole to Remain.
Contractor shall adjust grades
to protect manhole, as needed.

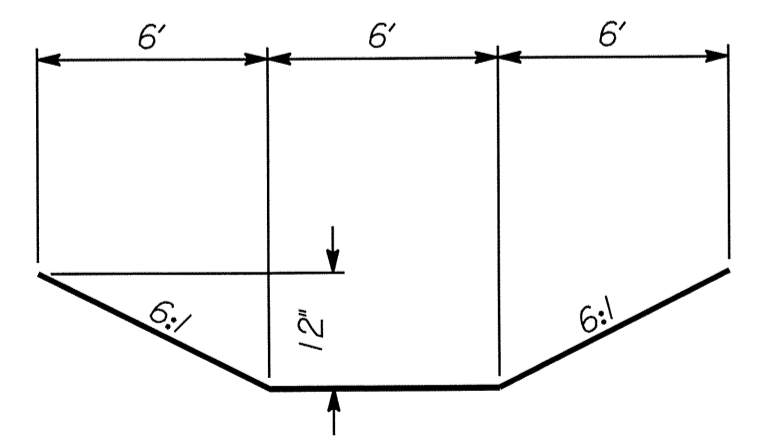
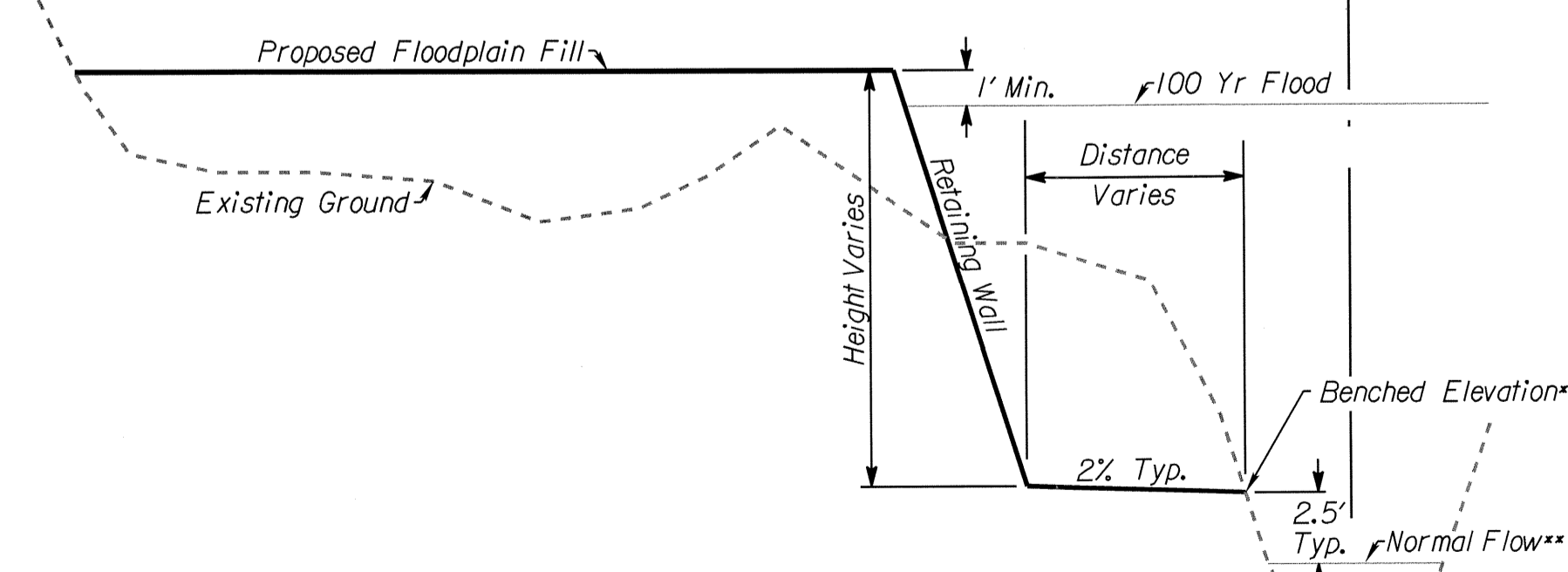
N=20666.4760, E=20538.7030
Existing Manhole to Remain.
Contractor shall adjust grades
to protect manhole, as needed.

Proposed Building
FF=1321.00 (SW)
FF=1317.50 (NE)

Install 299.6 SY Light Stone Riprap (18")
See Sheet No. 9



and Refiled on DOC. #/FLM-PG:
28821706 and 28812329



COGO POINTS:

Point	North	East	Point	North	East
100	21947.8274	20263.1588	136	20997.4458	20471.9115
101	21878.4159	20456.8051	137	20934.0016	20304.5355
102	21663.0751	20515.1077	138	20894.4860	20305.5475
103	21305.4132	21007.8216	139	20886.5887	20368.2507
104	21358.3198	20648.8471	140	20885.4445	20407.3053
105	21213.9449	20810.5981	141	20827.8431	20578.6093
106	21146.8471	20850.7037	142	20682.0724	20721.5559
107	21321.1881	20998.4489	143	20682.0512	20754.9168
108	21377.2326	20894.8967	144	20710.8674	20868.9208
109	21513.0781	20741.3790	145	20653.9632	20976.2292
110	21687.6513	20696.6318	146	20618.1417	20852.2609
111	21905.3924	20619.2204	147	20586.5315	20770.2196
112	21878.4303	20463.6822	148	20564.4094	20679.4039
113	20739.6835	20982.9248	149	20554.7988	20573.7690
114	20616.4429	21017.5402	150	20977.9747	20247.9896
115	20649.9591	21200.8836	151	20654.6475	20325.0573
116	20716.3455	21155.9776	152	20547.5427	20494.1960
117	21136.0714	21019.1880	153	21552.7420	20234.1960
118	21209.5626	21050.9918	154	21166.6265	20572.6098
119	21553.5537	20266.2189	155	21169.2461	20632.5610
120	21158.3765	20257.1191	156	21174.4581	20815.0398
121	21163.8118	20444.8586	157	20894.0063	20267.2863
122	21165.6608	20508.7223	158	20863.7318	20265.4548
123	21122.4249	20508.2947	159	20747.3429	20985.6945
124	21091.4456	20614.1111	160	20786.2864	21121.7922
125	21154.2524	20632.9951	161	21335.2622	20973.4879
126	21123.3196	20739.2515	162	21313.3006	21003.1353
127	21093.0425	20785.4652	163	21305.4132	21007.8216
128	21170.3392	20843.0748	164	21553.3147	20255.7216
129	21247.6965	20785.4605	165	21971.1623	20246.2097
130	21258.2606	20774.7782	166	21953.5465	20303.4015
131	21337.9823	20665.2144	167	21452.7906	20237.0788
132	20972.4949	20885.7911	168	21565.4665	20715.8635
133	20847.3829	20735.4614	169	21507.7572	20584.3597
134	20925.7986	20670.1998	170	20667.0671	21004.3597
135	20950.8549	20631.9549	171	20622.1588	21016.9734

* Proposed Bench Elevation Upstream of Existing Low Water Crossing= 1305.00
 Proposed Bench Elevation Downstream of Existing Low Water Crossing= 1302.50
 **Normal Flow Elevation Upstream of Existing Low Water Crossing= 1302.50
 Normal Flow Elevation Downstream of Existing Low Water Crossing= 1299.70

MAIZE 54 ADDITION
DRAINAGE IMPROVEMENTS
SITE GRADING
CITY OF WICHITA, KANSAS

Project No. 468-84575 OCA No. 75483

James L. Armour, P.E. - CITY ENGINEER

POE & ASSOCIATES OF KANSAS, INC.
CONSULTING ENGINEERS
5940 E. Central, Suite 200 ■ Wichita, KS 67208-4242
Phone 316/685-4114 ■ FAX 316/685-4444

DESIGNED BY: BLB
DRAWN BY: WAN
DATE: August 3, 2009

12469 SW 15th
Benton, KS 67017
O: 316-778-2215
F: 316-778-1204

4 of 25