

PAVING AND INCIDENTAL DRAINAGE PLANS
HAWTHORNE THIRD ADDITION
PHASE 4

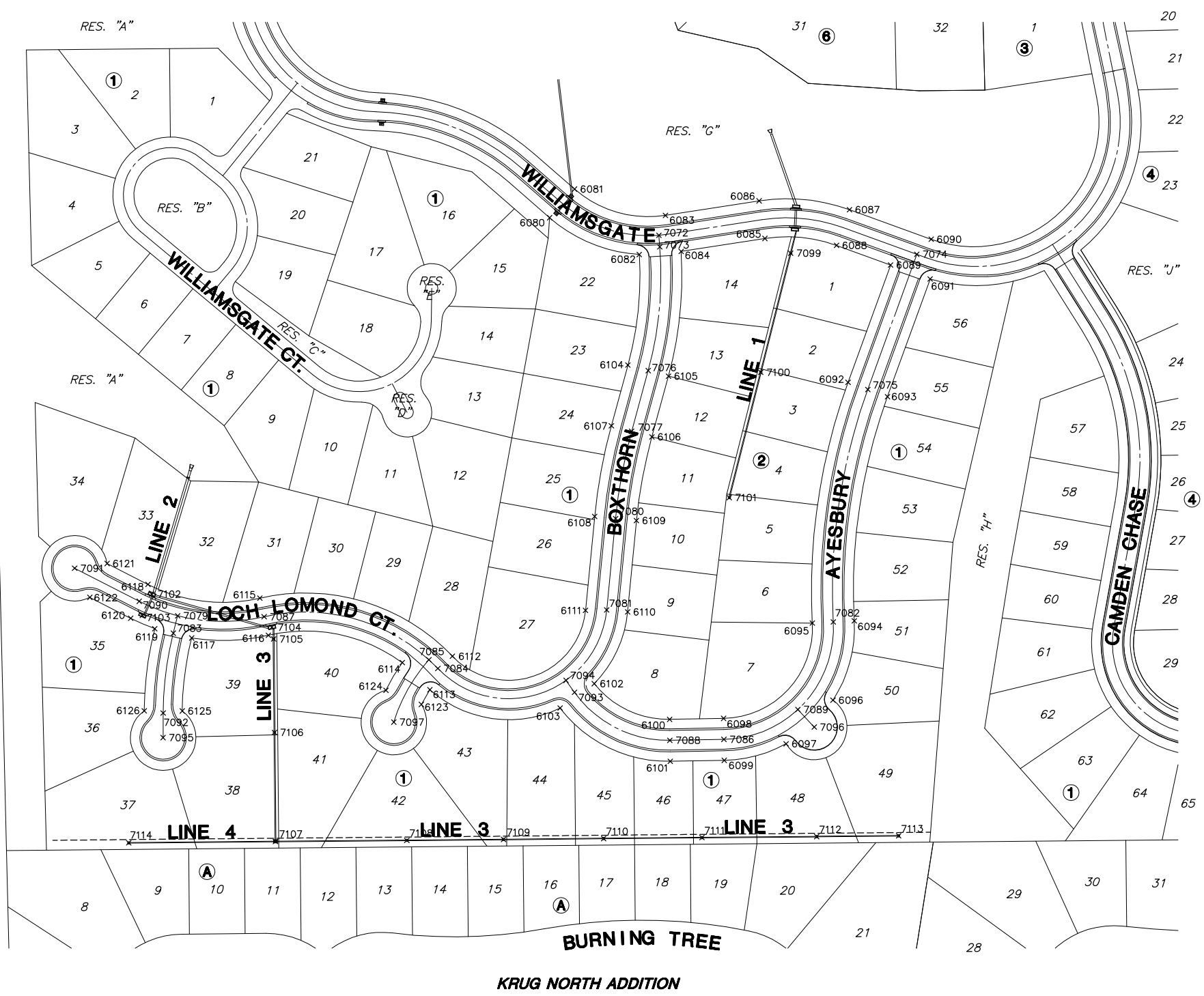
BUBBLE MAP
SHEET TITLE
472-84084
PROJECT NUMBER

DESIGN BY: *DFL*
DRAWN BY: *DMU*
CHECKED BY: *GJA*

ISSUED: August 2006
REVISED:

SHEET NO.
38 of 39

HAWTHORNE ADDITION



Road Points			
Point No.	Northing	Easting	Description
7072	1701004.142	1693878.488	INT
7073	1701005.553	1693896.027	PC
7074	1701397.543	1693907.478	INT
7075	1701322.769	1694113.755	PC
7076	1700987.934	1694084.889	PT
7077	1700962.651	1694177.569	PC
7079	1700270.353	1694458.963	INT
7080	1700938.215	1694310.554	PT
7081	1700924.641	1694449.893	PC
7082	1701270.166	1694468.331	PRC
7083	1700263.603	1694485.464	PC
7084	1700667.135	1694539.225	PRC
7085	1700653.458	1694525.916	INT
7086	1701103.421	1694647.344	PT
7087	1700402.180	1694460.295	PRC
7088	1701021.050	1694648.805	PC
7089	1701216.212	1694601.826	INT
7090	1700211.798	1694436.790	PT
7091	1700113.249	1694386.425	
7092	1700248.245	1694607.102	PT
7093	1700875.569	1694575.585	PT
7094	1700862.564	1694557.388	INT
7095	1700248.144	1694644.715	
7096	1701241.103	1694628.576	
7097	1700599.938	1694621.080	

Storm Water Sewer Points			
Point No.	Northing	Easting	Description
7099	1701205.248	1693905.789	MH
7100	1701159.627	1694087.44	MH
7101	1701111.622	1694278.587	MH
7102	1700230.857	1694425.836	INL
7103	1700216.464	1694458.337	INL
7104	1700414.076	1694476.296	INL
7105	1700416.692	1694494.329	MH
7106	1700417.994	1694636.852	MH
7107	1700419.513	1694803.189	MH
7108	1700619.855	1694801.359	MH
7109	1700767.311	1694800.012	MH
7110	1700919.842	1694798.619	MH
7111	1701069.836	1694797.249	MH
7112	1701244.829	1694795.65	MH
7113	1701369.824	1694794.508	MH
7114	1700195.785	1694805.233	MH

Plat Points			
Point No.	Northing	Easting	Description
6080	1700837.559	1693851.693	PI
6081	1700875.688	1693807.988	PI
6082	1700974.309	1693907.716	PI
6083	1701014.273	1693848.118	PI
6084	1701038.146	1693903.112	PI
6085	1701165.972	1693883.316	PI
6086	1701157.096	1693825.999	PI
6087	1701294.876	1693839.414	PI
6088	1701275.110	1693893.942	PI
6089	1701357.576	1693923.836	PI
6090	1701419.408	1693884.557	PI
6091	1701417.915	1693945.178	PI
6092	1701292.684	1694102.850	PI
6093	1701352.853	1694124.661	PI
6094	1701302.120	1694466.629	PI
6095	1701238.211	1694470.033	PI
6096	1701269.704	1694587.564	PI
6097	1701198.140	1694654.154	PI
6098	1701102.853	1694615.350	PI
6099	1701103.988	1694679.339	PI
6100	1701020.483	1694616.810	PI
6101	1701021.618	1694680.800	PI
6102	1700905.670	1694562.393	PI
6103	1700853.590	1694599.673	PI
6104	1700957.062	1694076.467	PI
6105	1701018.806	1694093.311	PI
6106	1700993.522	1694185.991	PI
6107	1700931.779	1694169.147	PI
6108	1700906.366	1694307.451	PI
6109	1700970.064	1694313.656	PI
6110	1700956.490	1694452.996	PI
6111	1700892.408	1694450.734	PI
6112	1700889.345	1694520.492	PI
6113	1700654.876	1694571.770	PI
6114	1700612.984	1694530.288	PI
6115	1700395.659	1694432.038	PI
6116	1700408.701	1694488.552	PI
6117	1700291.665	1694492.783	PI
6118	1700224.995	1694410.967	PI
6119	1700235.446	1694478.518	PI
6120	1700198.600	1694462.613	PI
6121	1700162.715	1694379.138	PI
6122	1700136.320	1694430.784	PI
6123	1700542.018	1694594.075	PI
6124	1700587.974	1694572.532	PI
6125	1700277.263	1694604.069	PI
6126	1700219.263	1694603.900	PI

